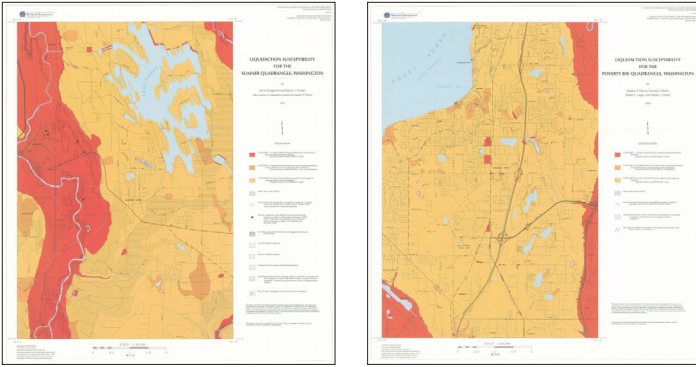


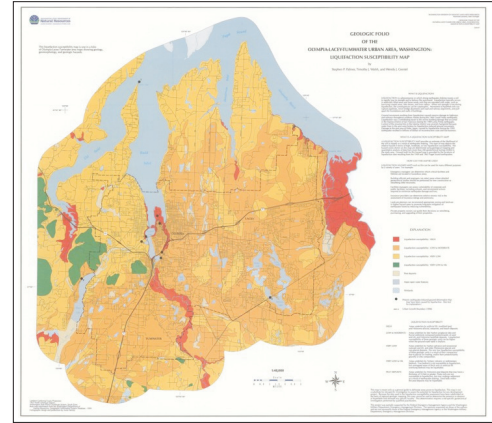
WASHINGTON STATE EARTHQUAKE HAZARD MAPS

(In alphabetical order by name)



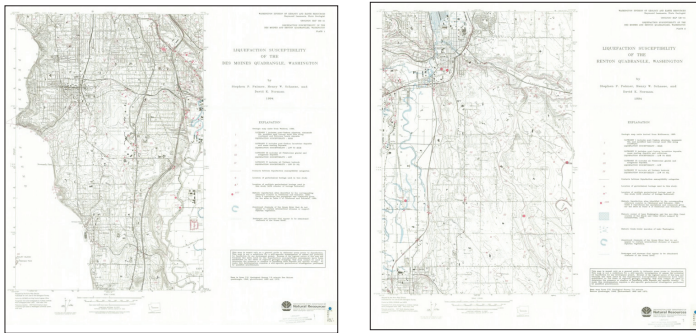
Auburn and Poverty Bay 7.5-minute Quadrangles

Palmer, S. P.; Walsh, T. J.; Logan, Robert L.; Gerstel, W. J., 1995, Liquefaction susceptibility for the Auburn and Poverty Bay 7.5-minute quadrangles, Washington: Washington Division of Geology and Earth Resources Geologic Map GM-43, 2 sheets, scale 1:24,000, with 15 p. text.



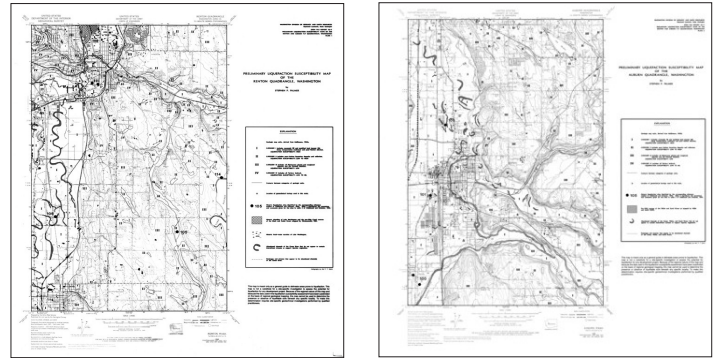
Olympia-Lacey-Tumwater Urban Area

Palmer, S. P.; Walsh, T. J.; Gerstel, W. J., 1999, Geologic folio of the Olympia-Lacey-Tumwater urban area, Washington—Liquefaction susceptibility map: Washington Division of Geology and Earth Resources Geologic Map GM-47, 1 sheet, scale 1:48,000, with 16 p. text.



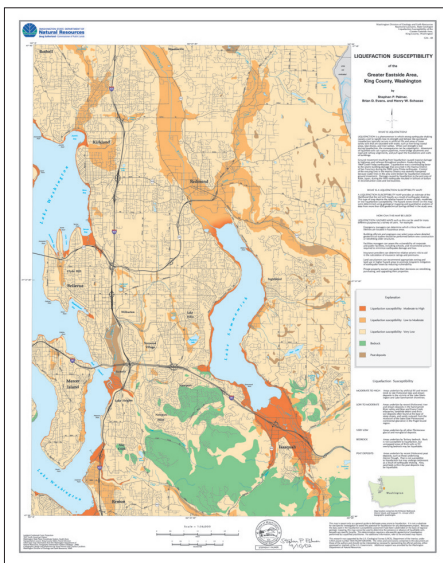
Des Moines and Renton 7.5-minute Quadrangles

Palmer, S. P.; Schasse, H. W.; Norman, D. K., 1994, Liquefaction susceptibility for the Des Moines and Renton 7.5-minute quadrangles, Washington: Washington Division of Geology and Earth Resources Geologic Map GM-41, 2 sheets, scale 1:24,000, with 15 p. text.



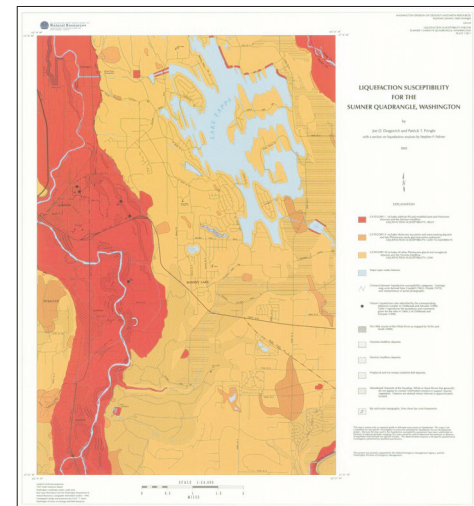
Renton and Auburn 7.5-minute Quadrangles

Palmer, S. P., 1992, Preliminary maps of liquefaction susceptibility for the Renton and Auburn 7.5' quadrangles, Washington: Washington Division of Geology and Earth Resources Open File Report 92-7, 24 p., 2 plates.



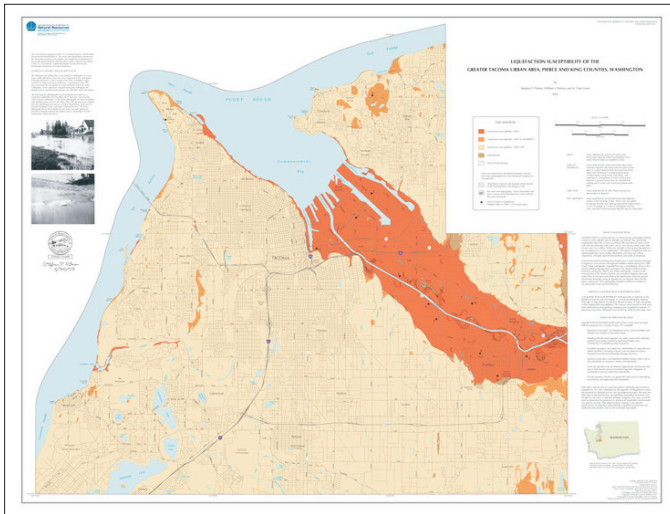
Greater Eastside Area, King County

Palmer, S. P.; Evans, B. D.; Schasse, H. W., 2002, Liquefaction susceptibility of the Greater Eastside area, King County, Washington: Washington Division of Geology and Earth Resources Geologic Map GM-48, 1 sheet, scale 1:36,000, with 14 p. text.



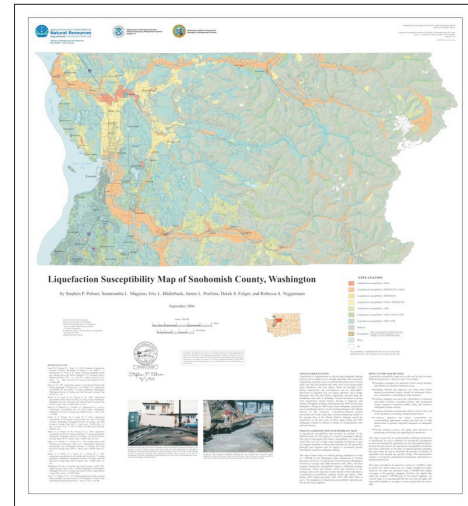
Sumner

Dragovich, J. D.; Pringle, P. T., 1995, Liquefaction susceptibility for the Sumner 7.5-minute quadrangle, Washington, with a section on liquefaction by S. P. Palmer: Washington Division of Geology and Earth Resources Geologic Map GM-44, 1 sheet, scale 1:24,000, with 26 p. text.



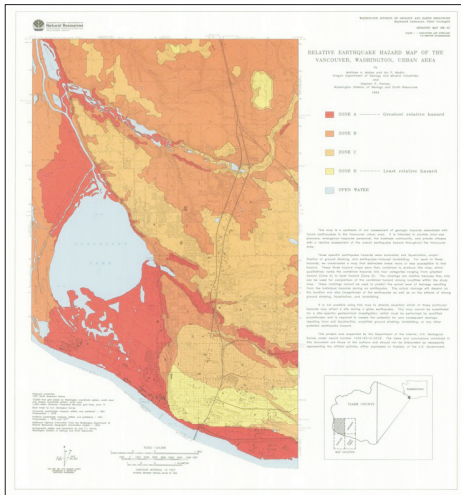
Tacoma Urban Area

Palmer, S. P.; Perkins, W. J.; Grant, W. P., 2003, Liquefaction susceptibility of the greater Tacoma urban area, Pierce and King Counties, Washington: Washington Division of Geology and Earth Resources Geologic Map GM-51, 1 sheet, scale 1:30,000 with 11 p. text.



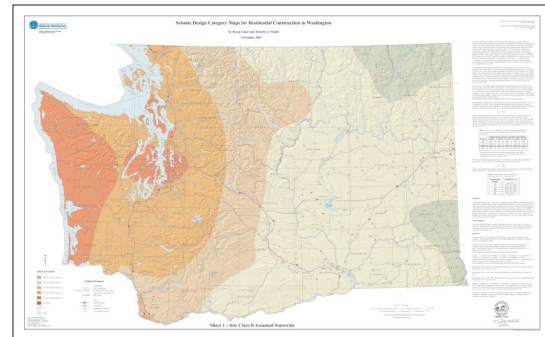
Washington Counties

Palmer, S. P.; Magsino, S. L.; Bilderback, E. L.; Poelstra, J. L.; Folger, D. S.; Niggemann, R. A., 2007, Liquefaction susceptibility and site class maps of Washington State, by county: Washington Division of Geology and Earth Resources Open File Report 2004-20, 78 plates, various scales, 45 p. text.



Vancouver Urban Area

Mabey, M. A.; Madin, I. P.; Palmer, S. P., 1994, Relative earthquake hazard map for the Vancouver, Washington, urban region: Washington Division of Geology and Earth Resources Geologic Map GM-42, 2 sheets, scale 1:24,000, with 5 p. text.



Washington State

Cakir, Recep; Walsh, T. J., 2007, Seismic design category maps for residential construction in Washington: Washington Division of Geology and Earth Resources Open File Report 2007-4, 2 sheets, scale 1:500,000.



WASHINGTON STATE DEPARTMENT OF
Natural Resources
 Peter Goldmark - Commissioner of Public Lands

Division of Geology and Earth Resources
 David K. Norman - State Geologist