



Stream Gradient and Anadromous Fish Use in the Skagit and Samish River Basins

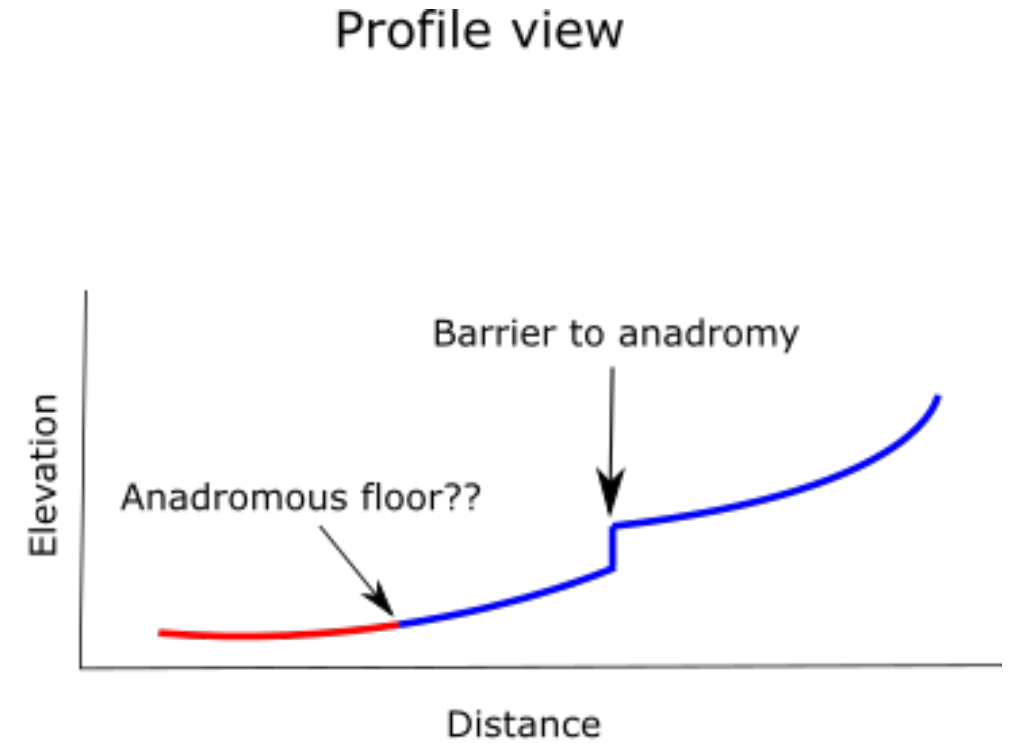
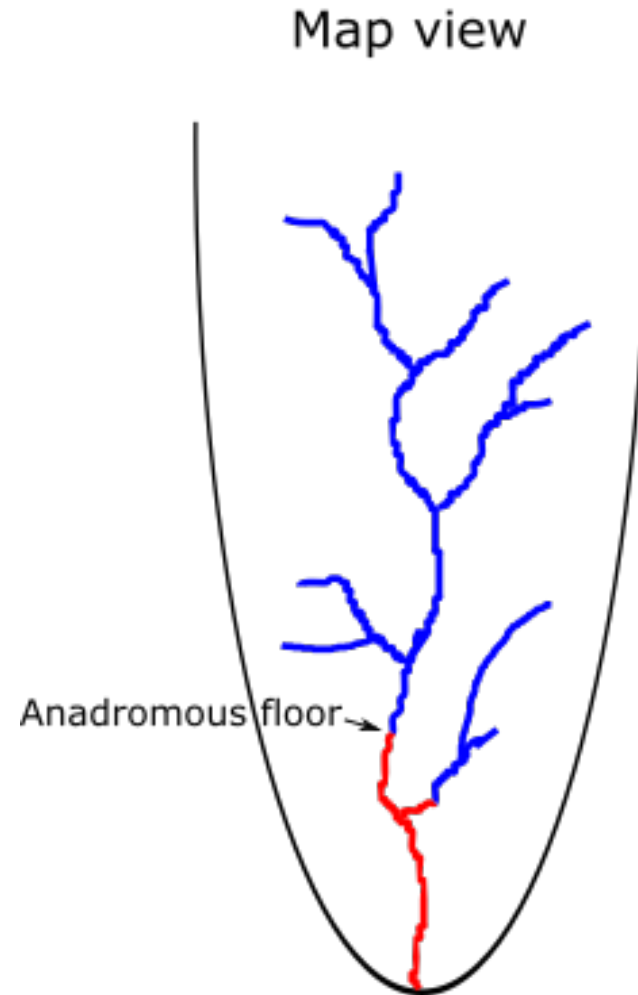
Gus Seixas, *Skagit River System Cooperative*

Mike Olis, *Skagit River System Cooperative*

Derek Marks, *Tulalip Tribes*

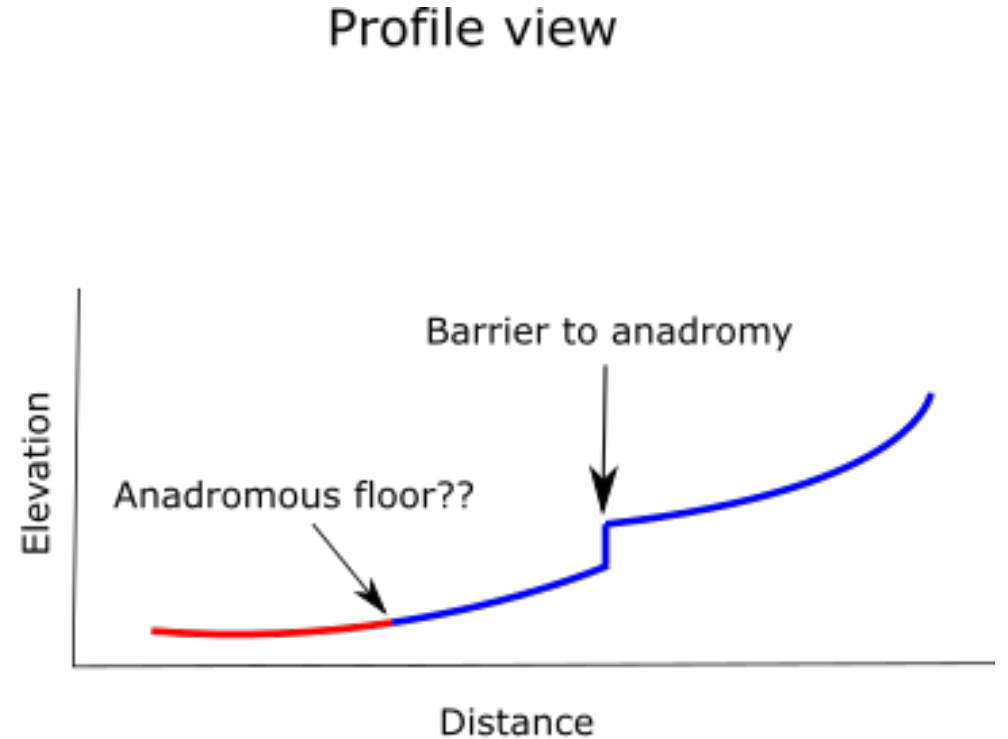
Ash Roorbach, *NWIFC*

The anadromous floor concept



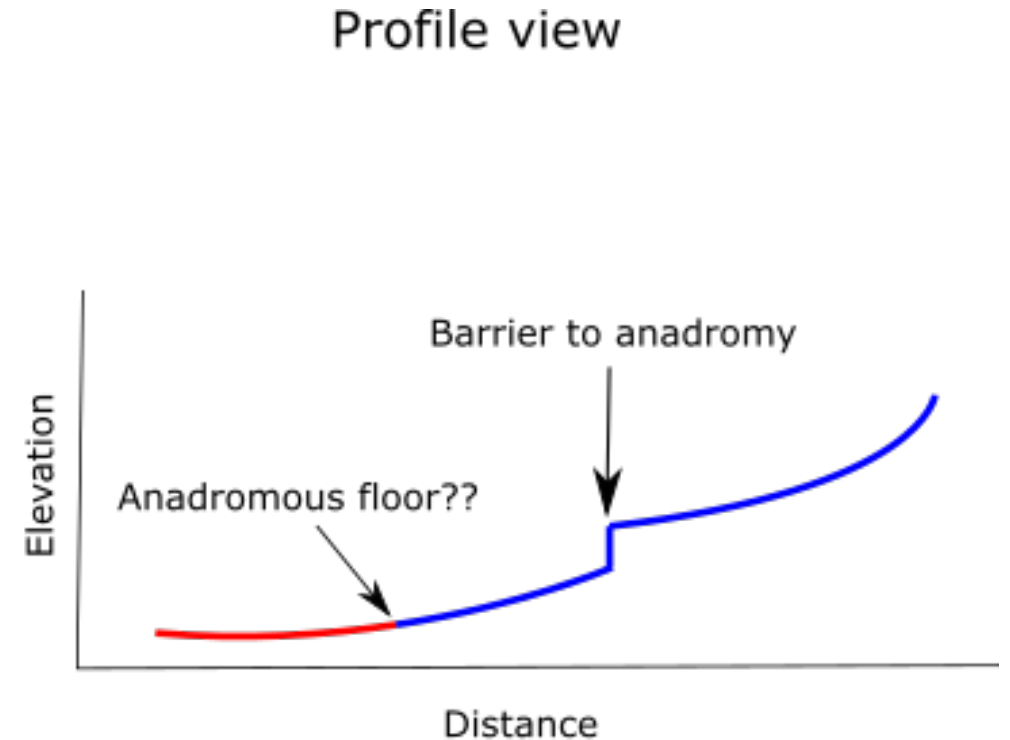
Objectives

- Describe how anadromous fish distributions relate to stream gradient in the Skagit and Samish river basins.



Objectives

- Describe how anadromous fish distributions relate to stream gradient in the Skagit and Samish river basins.
- Provide information that can be used to determine a stream gradient threshold that defines presumed anadromous use.



DATA

- **lidar data:**



DATA

- **lidar data:** 2016 North Puget and 2015 Glacier Peak acquisitions.



DATA

- **lidar data:** 2016 North Puget and 2015 Glacier Peak acquisitions.
- **Anadromous fish observations:**



DATA

- **lidar data:** 2016 North Puget and 2015 Glacier Peak acquisitions.
- **Anadromous fish observations:** SSHIAP Coho data collected by a Technical Advisory Group for a habitat limiting factors analysis (early 2000s).



Barrier categories

No barriers

- Natural barrier = No.
- 119 points.
- Represents 31% of the dataset.



Barrier categories

Unconfirmed Natural barriers

- Natural barrier = Unknown.
- 112 points.
- Represents 29% of the dataset.



Barrier categories

Known natural barriers

- Natural barrier = Yes.
- 91 points.
- Represents 24% of the dataset.



Barrier categories

End of channel

- Natural barrier = EOC.
- 23 points.
- Represents 6% of the dataset.



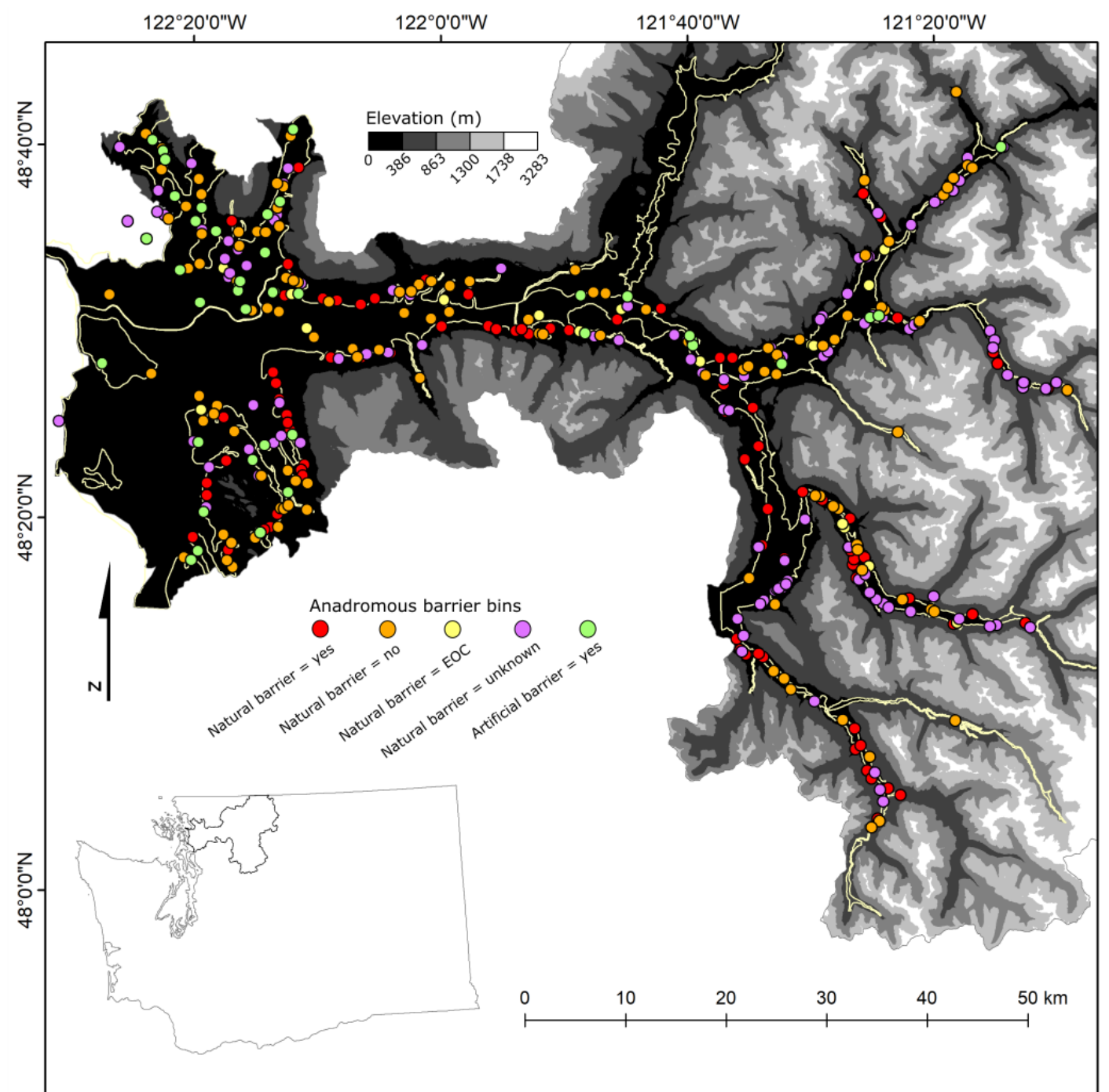
Barrier categories

Known artificial barriers

- Artificial barrier = Yes.
- 42 points.
- Represents 12% of the dataset.



Coho distribution in the Skagit and Samish River basins



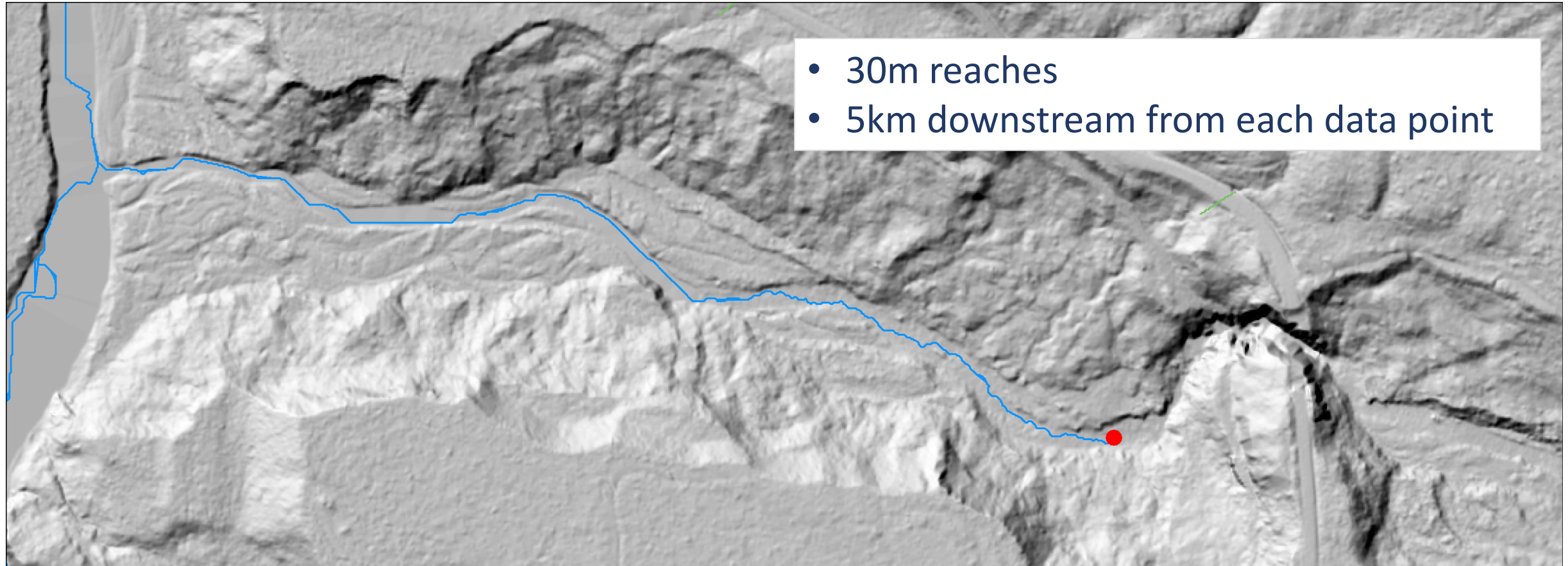
Interpretation of the barrier categories



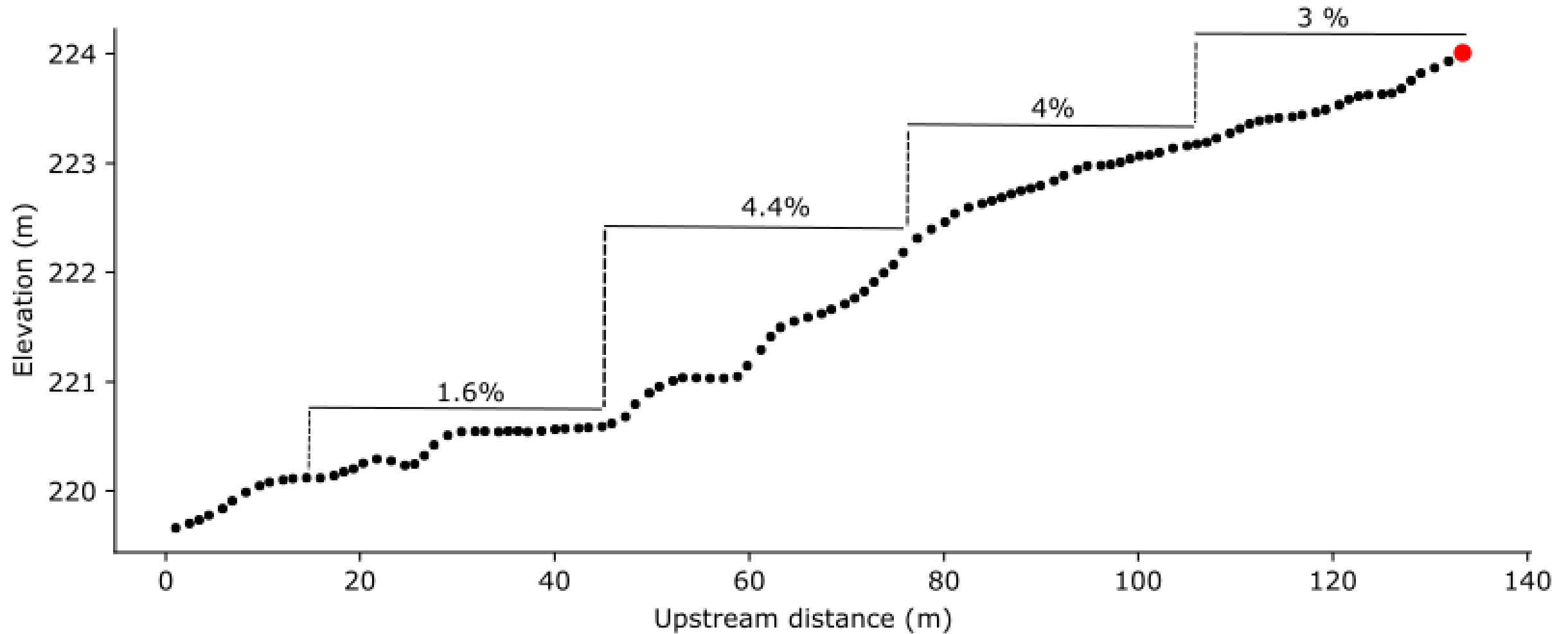
= ?



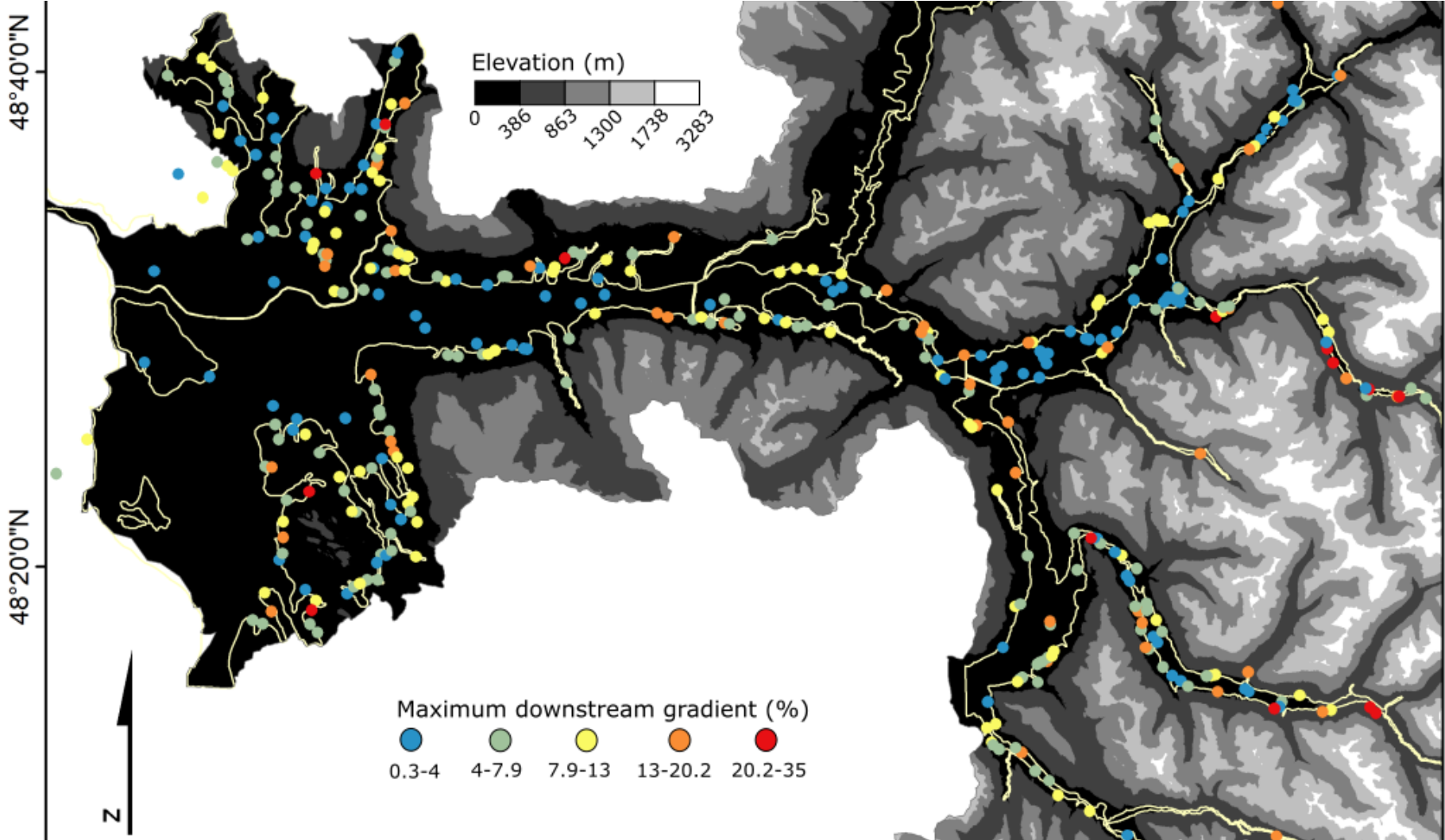
Methods: measuring downstream gradients



Methods: measuring downstream gradients

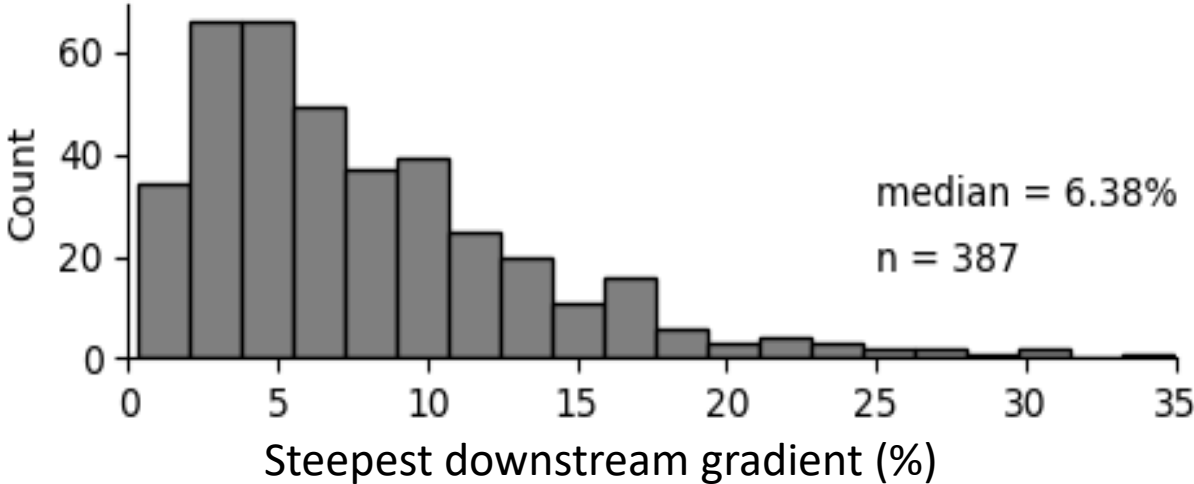


Results of the stream gradient analysis



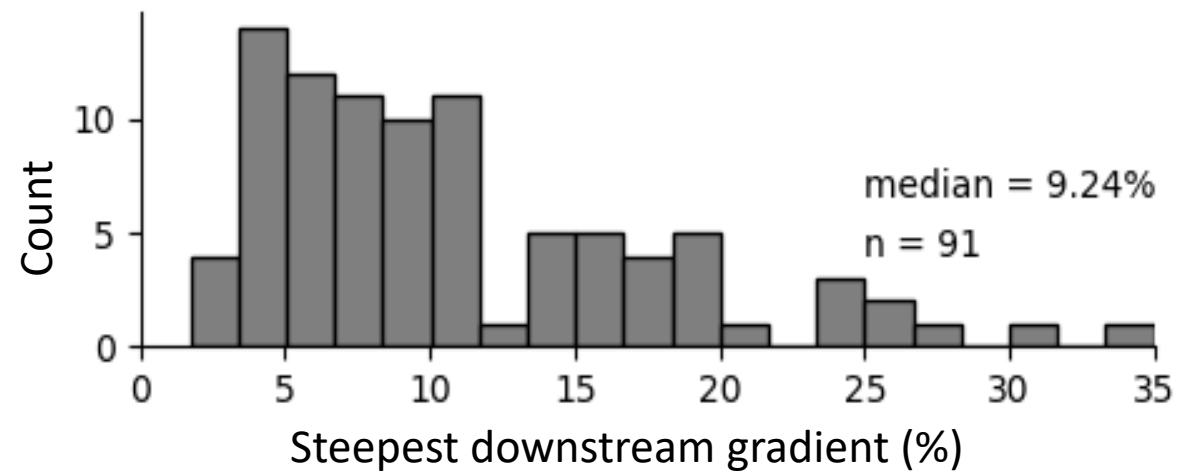
Results of the stream gradient analysis

All categories:



Results of the stream gradient analysis

Natural barrier = Yes



Results of the stream gradient analysis

Natural barrier = unknown

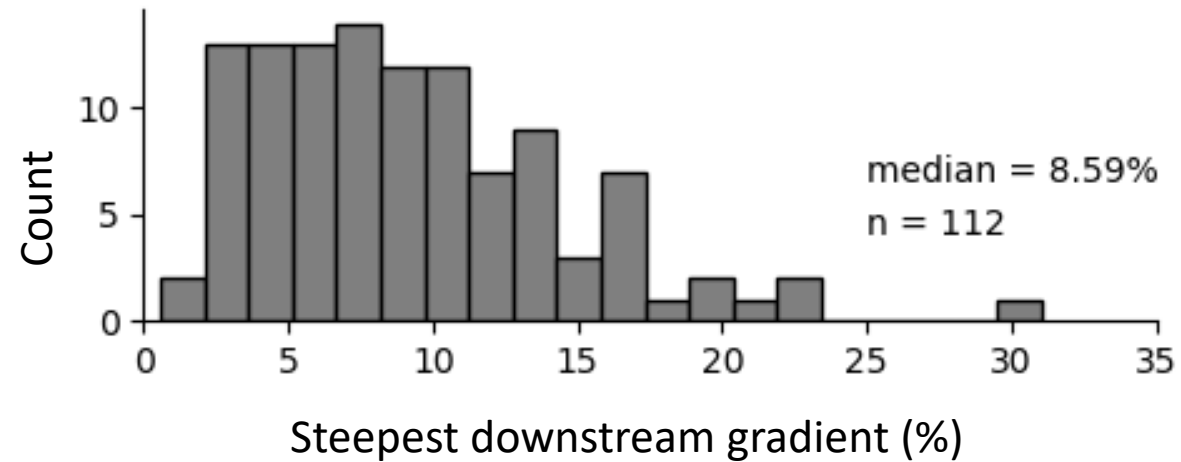


Table 2. Maximum downstream gradient results. 5th-95th percentiles are shown in 15% increments.

Category	N.	Min.	Max.	5 th	20 th	35 th	50 th *	65 th	80 th	95 th	1 st reach**
All points	387	0.3	35	1.1	3.4	4.8	6.4	8.9	11.7	18.8	27
Nat. bar. = yes	91	1.7	35	3.6	5.1	7	9.2	11.4	16.4	25	36
Nat. bar. = no	119	0.3	28.2	0.7	2.2	3.5	4.7	5.9	8.1	14.2	14
Nat. bar. = EOC	23	0.5	14.1	0.7	1.6	2.4	2.6	3.4	4.2	5	17
Nat. bar. = unk.	112	0.6	31	2.7	4.5	6.3	8.6	10.5	13	19.2	36
Art. bar. = yes	42	1.1	16.5	1.9	3.8	5	6.3	8.6	10.5	13.5	31

* 50th percentile represents the median.

** Percent of points in each category for which the steepest 30 m reach was the first reach downstream of the Coho distribution point.

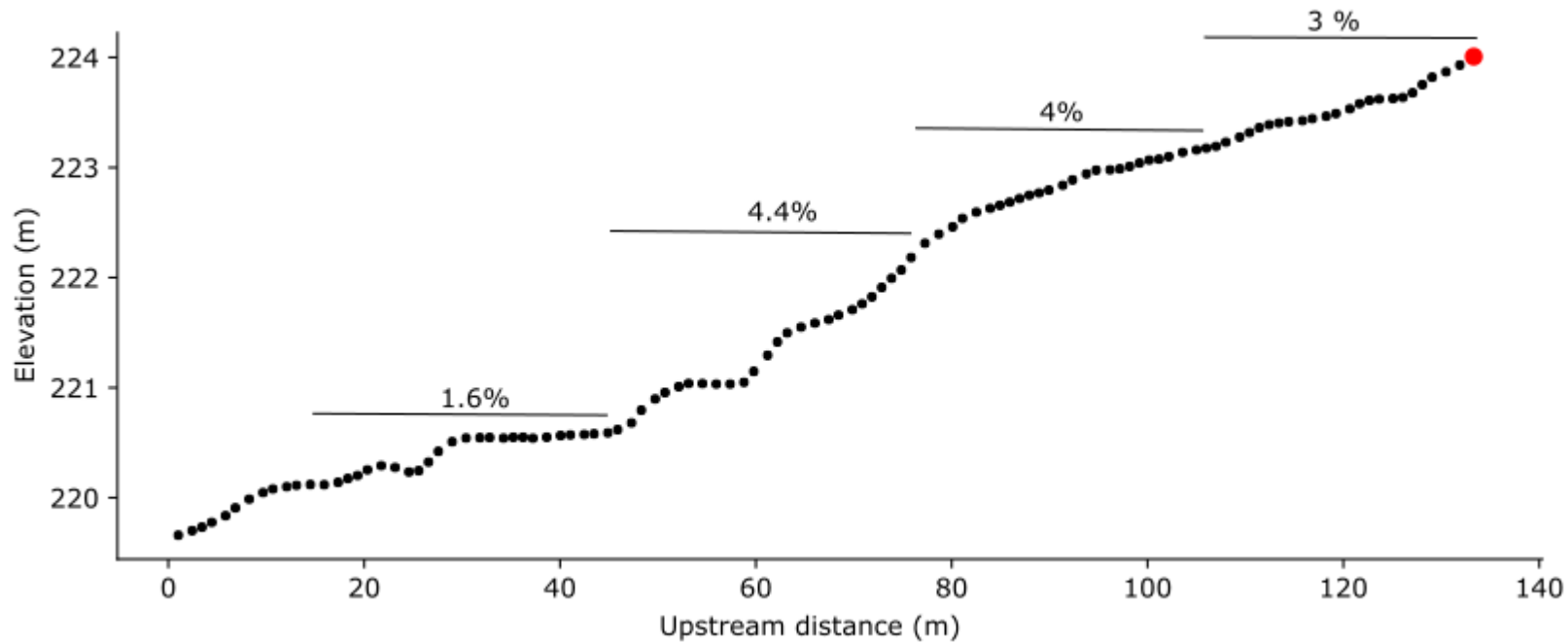
Discussion

Only 17-36% of the steepest reaches were directly below their fish distribution point.



Discussion

Only 17-36% of the steepest reaches were directly below their fish distribution point.



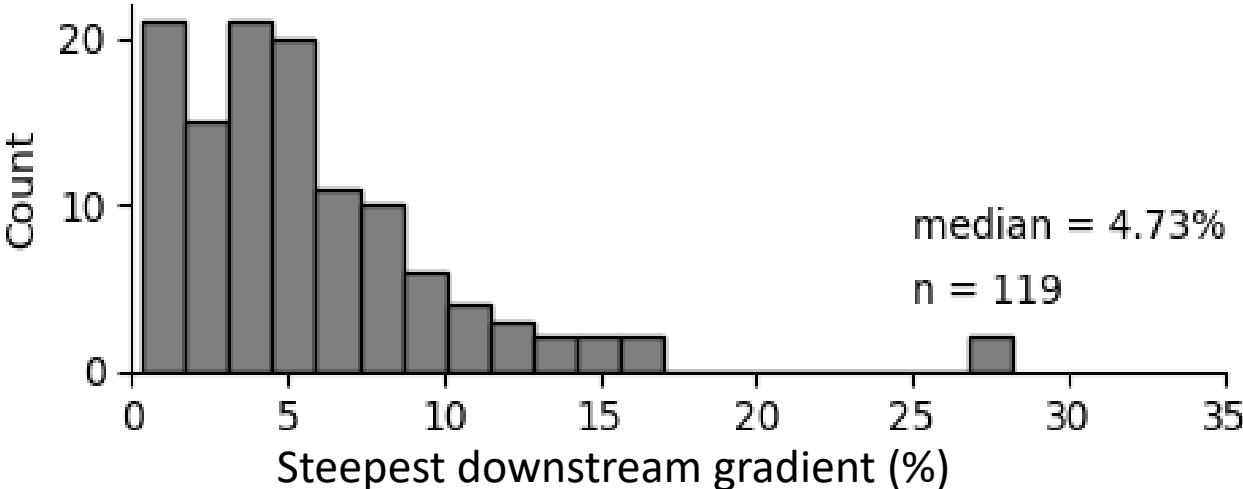
Thank you!



Gus Seixas: gseixas@skagitcoop.org, 360-399-5526

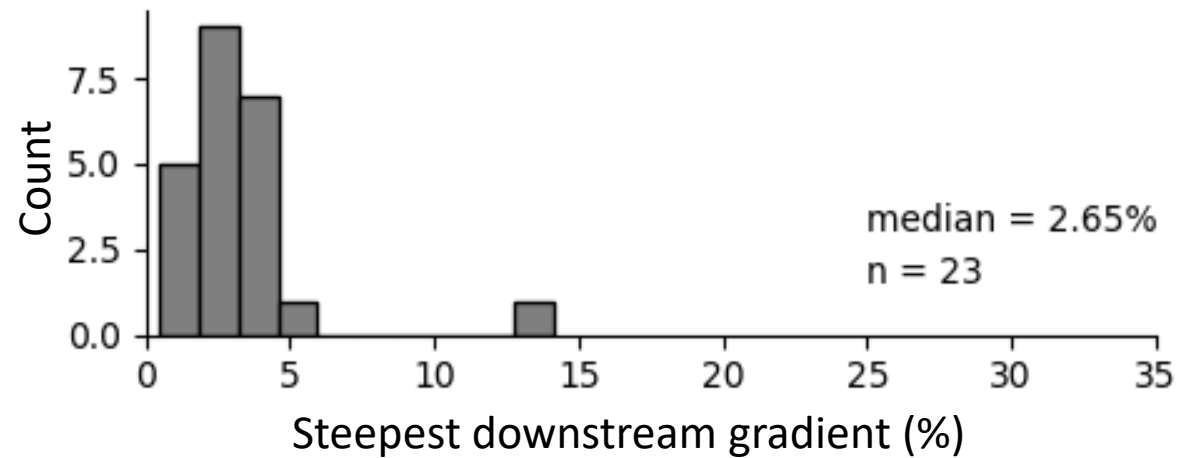
Results of the stream gradient analysis

Natural barrier = No



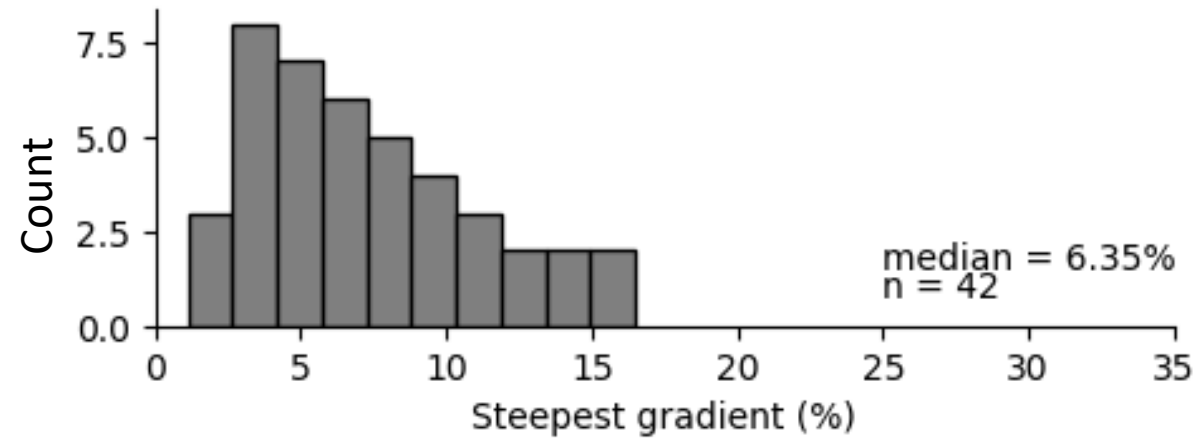
Results of the stream gradient analysis

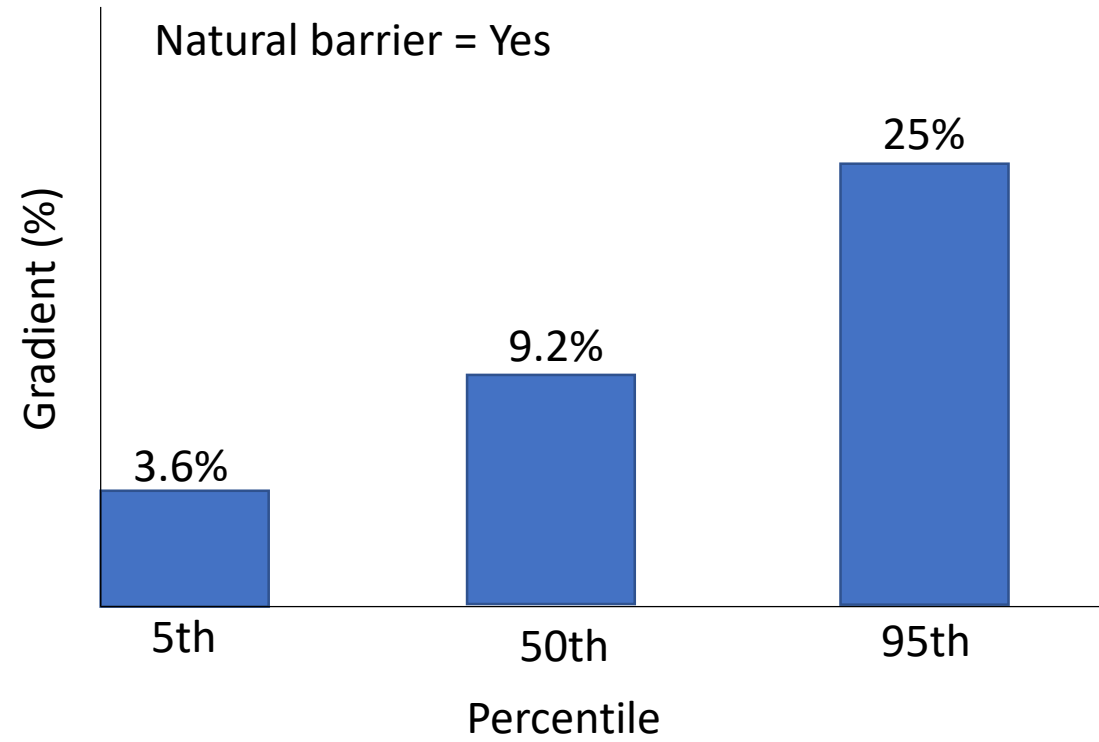
Natural barrier = end of channel



Results of the stream gradient analysis

Artificial barrier = Yes





Anadromous floor recommendation criteria