

R  
E  
S  
O  
U  
R  
C  
E  
S

N  
A  
T  
U  
R  
A  
L



# Public Auction Sale of Timber

Book 923

.....  
January 2013



WASHINGTON STATE DEPARTMENT OF  
**Natural Resources**

**Peter Goldmark** - Commissioner of Public Lands

Caring for  
your natural resources ...  
now and forever

# IMPORTANT NOTICES

## *Natural Resources (DNR)*

### **Governmental Regulatory Actions or Orders**

The purchaser assumes the risk of liabilities related to regulatory actions or orders by any government agency that may affect the operability of these timber sales. Such regulatory actions or orders include, but are not limited to, actions taken pursuant to the State Forest Practices Act, Chapter 76.09 RCW, and the Federal Endangered Species Act, 16 U.S.C. §§ 1531-1544. Please see timber sale contract clauses G-066 and G-220 for further information.

### **Threatened and Endangered Species**

DNR cannot verify the presence or absence of **any** threatened or endangered species that may affect the operability of the timber sale. Purchasers must rely on their own assessments.

### **Export Restricted**

All timber purchased under these state DNR contracts shall not be exported outside of the United States until the timber has been processed. Purchasers shall not violate any of the prohibitions in WAC 240-15-015 (relating to the prohibitions on export and substitution), WAC 240-15-025 (relating to reporting requirements), and WAC 240-15-030 (relating to enforcement). If purchasers knowingly violate WAC 240-15-015, purchasers shall be barred from bidding on or purchasing export restricted timber as provided.

### **Cover photos**

Timber Sales in this book are from state trust lands, managed to help build K-12 public schools, state universities, colleges, prisons, mental hospitals, the state Capitol; and to support local services in many counties.

**Top left:** State Forest Lands are managed to provide revenue to the counties in which they are located such as the Pacific County Courthouse in South Bend, Washington. Northwest Bridge Company of Portland, Oregon completed construction of the courthouse building in June of 1911. One unusual feature of the historic building is an "art glass dome" that crowns the structure. The courthouse is listed on the National Register of Historic Places.  
**Photo:** DNR/Tom Heller

**Bottom left:** Grade school students learn from high school students in the North Mason School District during Students in the Watershed day in the Tahuya State Forest trust lands. **Photo:** DNR/Staff

**Right:** Landscape view of DNR managed trust lands in western Washington. **Photo:** DNR/Staff

## Table of Contents

Certification Opportunities for DNR Timber Purchasers	Page 3
Bidder/Purchaser Auction and Bidding Information	Page 5
Summary of All Sales Being Offered in January	Page 11
Mid Lacamas	Page 13
Mid Speelyai	Page 17
Drifter	Page 23
Splitter	Page 29
Upper Seven	Page 33
Sockeye Sorts	Page 39
Sealed Bid Form and Instructions	Page 43
Statewide Bid Bond and Instructions	Page 45
Timber Sale per Sale Bid Bond and Instructions	Page 49
Log Sort Sealed Bid Form and Instructions	Page 53





WASHINGTON STATE  
**Natural Resources**

Caring for your natural resources  
...now and forever

## **Certification Opportunities for DNR Timber Purchasers**

Certified forests are grown to an approved set of standards which demonstrate environmentally responsible, socially beneficial, and economically viable management practices that promote responsible forestry. This unique commitment to responsible forestry recognizes that forest landowners play a critical role in ensuring the long-term health and sustainability of our forests.

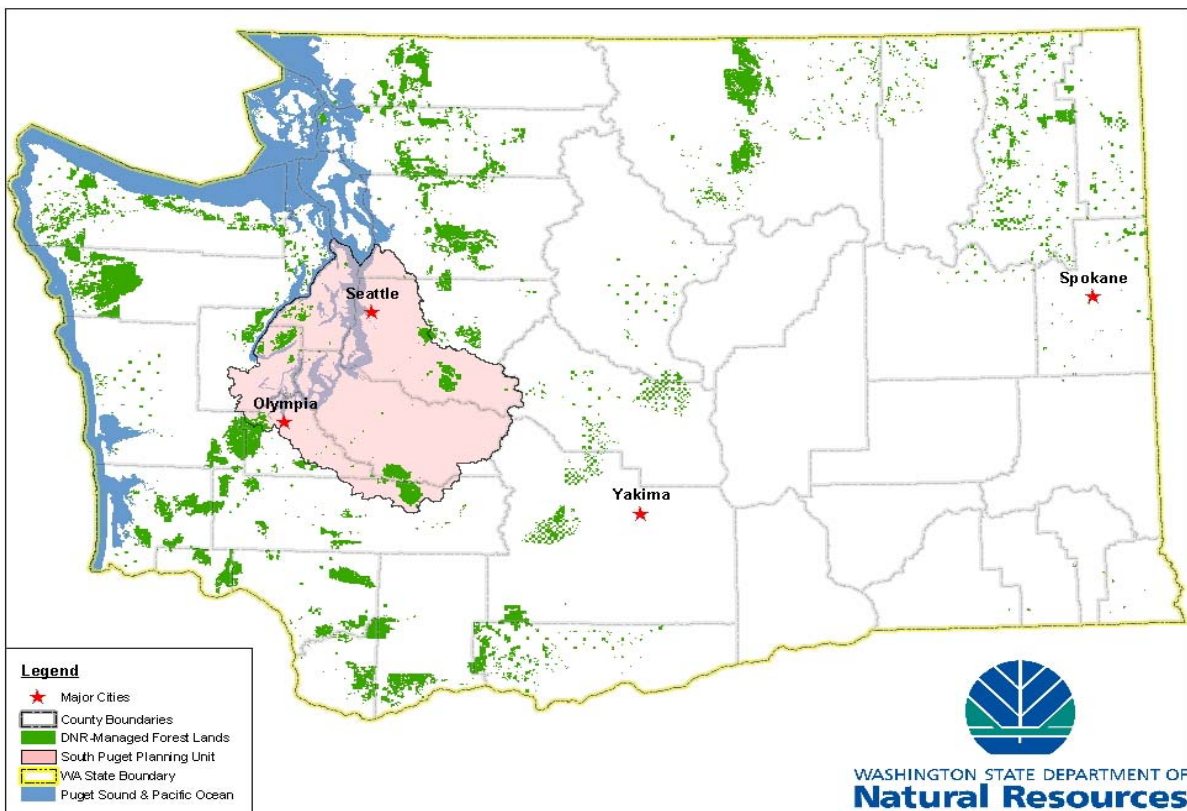
*Forest Stewardship Council® (FSC®)* is an independent, non-profit organization that promotes responsible management of the world's working forests through the development of forest management standards, a voluntary certification system, and trademarks that provide recognition and value to products bearing the FSC label in the marketplace. FSC standards ensure forestry is practiced in an environmentally responsible, socially beneficial, and economically viable way.

Sustainable Forestry Initiative, Inc. is an independent non-profit organization internationally endorsed and accepted around the world. The *Sustainable Forestry Initiative® (SFI®)* program is based on the premise that responsible environmental behavior and sound business decisions can co-exist. Its three-chamber Board of Directors governs all aspects of the SFI program, with equal representation from the environmental, economic and social sectors.

Currently, all Department of Natural Resources (DNR)-managed forested state trust lands in Washington State are certified under the 2010-2014 SFI program Standard. Lands within DNR's South Puget Habitat Conservation Plan Planning Unit, located within parts of King, Pierce, Thurston, Lewis, Kitsap, and Mason counties, are dually certified under the FSC Pacific Coast Regional Standard and the 2010-2014 SFI program Standard.

Certification under each standard involves an inspection audit of the landowner's forest management activities by an independent third-party accredited team to verify that it meets specified forest management principles. If the forest unit complies with the specific standard, the landowner receives a certificate of conformance ensuring that responsible forestry is being practiced. Both standards encourage integration of perpetual growing and harvesting of trees with strong measures to protect wildlife, plants, soil, water, and air quality. Both standards provide a seal of approval that forests certified under these principles are well-managed. The global marketplace recognizes and endorses multiple forest certification standards. Each standard has individual market niches. By being dually certified, DNR can maximize its customer base and provide choices to the consumer.





DNR's FSC certificate number is: BV-FM / COC-080501

DNR's SFI certificate number is: BV-SFIS-US09000572

DNR-managed forested state trust lands within the South Puget Habitat Conservation Plan Planning Unit (located within parts of King, Pierce, Thurston, Lewis, Kitsap, and Mason counties) are certified as being in compliance with the Forest Stewardship Council Pacific Coast Regional Standard. This makes DNR's SP Planning Unit dually certified under both the FSC and SFI program Standards.

To learn more about chain-of-custody and demonstrating that your timber is derived from a responsibly managed forest and/or desires of becoming a "program participant" in the FSC Program, visit [www.fscus.org](http://www.fscus.org).

To learn more about DNR timber sales certified under the FSC Standard, visit [www.dnr.wa.gov](http://www.dnr.wa.gov).

FSC A.C. owns all right, title, and interest in and to the Forest Stewardship Council trademarks.

All DNR-managed forested state trust lands across the state have been certified as being in compliance with the 2010-2014 Sustainable Forestry Initiative program Standard.

To learn more about chain-of-custody and demonstrating that your timber is derived from a responsibly managed forest and/or desires of becoming a "program participant" in the SFI program, visit [www.sfiprogram.org](http://www.sfiprogram.org).

To learn more about DNR timber sales certified under the SFI program Standard, visit [www.dnr.wa.gov](http://www.dnr.wa.gov).

Sustainable Forestry Initiative® and SFI® word marks and logo marks used are registered marks owned by Sustainable Forestry Initiative Inc.

**To learn more about certification on DNR-managed forested state trust lands, visit** <http://www.dnr.wa.gov/BusinessPermits/TimberSales> or contact the following:

**Forest Resources and Conservation Division, Product Sales Section:**

Paul Bialkowski, Assistant Division Manager, 360-902-1733, [paul.bialkowski@dnr.wa.gov](mailto:paul.bialkowski@dnr.wa.gov)  
Steve Teitzel, Operations, 360-902-1741, [steve.teitzel@dnr.wa.gov](mailto:steve.teitzel@dnr.wa.gov)

**Forest Resources and Conservation Division, HCP and Scientific Consultation Section:**

Clay Sprague, Assistant Division Manager, 360-902-1788, [clay.sprague@dnr.wa.gov](mailto:clay.sprague@dnr.wa.gov)  
Allen Estep, Forest Certification Program Lead, 360-902-2898, [allen.estep@dnr.wa.gov](mailto:allen.estep@dnr.wa.gov)  
Lislie Sayers, Forest Certification Implementation Lead, 360-902-2896, [lisliesayers@dnr.wa.gov](mailto:lisliesayers@dnr.wa.gov)

# Washington State Department of Natural Resources (DNR)

## **Bidder's/Purchaser's Inspection of Sale Area and Forest Products**

Acreage estimates and volume estimates contained within each timber notice of sale and each timber sale contract are made only for administrative and identification purposes. Except as expressly provided by the timber sale contract, the purchaser shall be responsible for paying the entire purchase price, even if the actual acreage or timber volume varies from the estimated quantity or volume shown.

All prospective bidders have the opportunity and are expected to inspect the sale area and the forest products located thereon. Bidders shall not rely on any representations by the State including, but not limited to, acreage estimates, volume estimates, appraisal or pre-bid documentation. The successful bidder/purchaser will further warrant that they have entered the timber sale contract without any reliance upon the DNR's volume estimates, acreage estimates, appraisals, pre-bid documentation, or any other representation by the DNR.

*Any timber sale contract arising out of these public auctions will require the successful purchaser to warrant that they are entering the timber sale contract based solely upon their own judgment of the value of the forest products, formed after their own examination and inspection of both the timber sale area and the forest products being sold.*

## **Exclusion and Disclaimer of Warranties**

The PARTIES AGREE that the IMPLIED WARRANTIES OF MERCHANTABILITY AND FITNESS FOR A PARTICULAR PURPOSE, and ALL OTHER WARRANTIES EXPRESS OR IMPLIED, ARE EXCLUDED from this transaction, and shall not apply to the goods sold. For example, THE FOLLOWING SPECIFIC MATTERS ARE NOT WARRANTED, and are EXCLUDED from this transaction:

- a. ***The merchantability of the forest products.*** The use of the term "merchantable" in any document is not intended to vary the foregoing.
- b. ***The condition of the forest products.*** All forest products will be conveyed "AS IS."
- c. ***The acreage contained within any sale area.*** Any acreage descriptions appearing in the timber notices of sale, timber sale contract, timber sale map or other documents are estimates only, provided solely for administrative and identification purposes.
- d. ***The volume, quality, or grade of the forest products.*** The descriptions of the forest products to be conveyed are estimates only, made solely for administrative and identification purposes.
- e. ***The correctness of any soil or surface conditions, presale construction appraisals, investigations, and all other pre-bid documents prepared by or for the State.*** These documents have been prepared for the State's appraisal purposes only.
- f. ***That the sale area is free from threatened or endangered species, or their habitat.*** The State is not responsible for any interferences with forestry operations that result from the presence of any

threatened or endangered species, or the presence of their habitat, within the sale area.

g. *That the forestry operations to be performed under this contract will be free from regulatory actions by governmental agencies.* The State is not responsible for actions to enforce regulatory laws, such as the Washington Forest Practices Act (Chapter 76.09 RCW), taken by the Department of Natural Resources or any other agency that may affect the operability of these timber sales.

h. Items contained in any other documents prepared for or by the State.

Please also see timber sale contract clause G-060 for further information.

## **BIDDING PROCEDURES FOR TIMBER AUCTIONS**

*The general requirements that follow are a part of all Timber Notices of Sale to be auctioned by the Department of Natural Resources (DNR).*

### **General Information**

*The State reserves the right to waive minor irregularities and the right to reject any or all bids.*

A. This book contains the timber notices of sale and maps for each timber sale scheduled to be auctioned. More specific information can be obtained by contacting the appropriate region office at the number listed on the back cover of this book.

B. The timber notice of sale is a summary of sale information. For more specific information, interested parties are encouraged to view the Appraisal Packets on the DNR Internet Site @ [www.dnr.wa.gov](http://www.dnr.wa.gov), this will take you directly to the Product Sales Section. The Appraisal Packets contain **DRAFT** copies of the timber notice of sale, map, contract, road plan, cruise data, precruise and cruise narrative, Forest Practices Application (FPA).

C. The sale preview packets may be obtained at no charge for individual sales by visiting the appropriate region office.

D. Timber sale contracts contain extensive terms and conditions that will be binding upon successful high bidders. Each bidder should carefully review all terms contained in the appropriate **DRAFT** timber sale contract prior to bidding on a sale, and should review the final contract prior to signing. **DRAFT** timber sale contracts are contained in the preview and presales packets and are available upon request at the respective region office.

E. Sales advertised in this book have not been approved by the Board of Natural Resources and are subject to the Board's approval before they will be sold. The Board meets and approves sales approximately six weeks prior to auction. All sales are subject to confirmation by the DNR under RCW 79.15.120.

F. The State does not guarantee the accuracy of any information contained herein pertaining to particular sales. Therefore, all prospective purchasers are expected to make their own independent inspections and appraisals prior to bidding.

G. If any conflict exists between the information in the Timber Notice of Sale, timber sale map,



sale preview packets and that in the timber sale contract, the **signed contract will prevail**.

H. Purchasers must pay the Forest Excise Tax on the bid price, permanent road construction costs, and other considerations. The tax rate is 5% without the EARR credit and 4.2% with the credit. For more information contact the Department of Revenue, Forest Tax Section at 1-800-548-8829.

I. **Within 30 days of sale confirmation, the apparent high bidder will provide to the State the Performance Security** specified on each Notice of Sale. **The successful bidder also agrees to return a signed contract to the State within 30 days of confirmation.** Failure to provide a signed contract to the state within 30 days of confirmation may result in a loss of bidder's rights to the products sold and forfeiture of initial deposit moneys.

J. Each DNR region office has information about sales offered in that region. For further information, contact the respective DNR region office. Region office addresses and telephone numbers appear on the back cover of this booklet.

K. The purchaser assumes the responsibility for any costs associated with extra maintenance or repair levied by a county for any county road used by the purchaser.

## **Bidding Process**

A. All timber will be auctioned using the sealed bid method.

B. Bids submitted on day of auction must be in the bid box at the specified auction location before 10:00 a.m. The respective DNR region office must receive mailed bids by 4:30 p.m., on the last business day before the auction. Bidders assume all risk for the method of delivery.

C. The DNR has the right to reject bid forms that are completed incorrectly. *All bid forms must have an original signature on behalf of the person or entity submitting the bid, and must be on the form provided in this booklet or a photocopy thereof. Revised documents are not permissible.* Bidding instructions are on the back of the Sealed Bid Form. A bid deposit must be included in the sealed bid envelope unless using a Timber Sale Statewide Bid Bond.

D. All bids must include the completed Sealed Bid Form and bid deposit.

E. Bids will be opened in each respective region in the order in which sales appear in the Public Auction Sale of Timber book (alphabetically by county and by agreement number). Sales added after the book is printed will be inserted to retain this order. Sort sales may be auctioned out of this sequence at the State's convince.

F. If a tie bid occurs, the names of the tie bidders will be placed in a hat and the successful bidder will be determined by a drawing.

G. For sales offered on a stumpage basis, the apparent high bidder on a particular sale will have the option of withdrawing additional sealed bids submitted for any remaining sales to be auctioned. The apparent high bidder must exercise this option within two minutes after the apparent high bidder is announced. **This option is not available for sales offered on a delivered basis.**

## **Auction Time and Location**

Auctions will start at 10:00 a.m. and close at 4:00 p.m. on the date and at the location specified in each Timber Notice of Sale.

## **Bid Deposits**

- A. Required bid deposits are listed on each Timber Notice of Sale.
- B. Bid deposits must be in the form of cash, certified check, cashiers' check, money order or bid bond.
- C. Bid bonds may be either a Timber Sale Statewide Bid Bond or a Timber Sale Per Sale Bid Bond.
- D. All bid deposits shall be submitted by the person or entity submitting the bid and made payable to the Department of Natural Resources. **Third party deposits will not be accepted.**

## **Timber Sale Per Sale Bid Bonds**

- A. The Per Sale Bid Bond shall guarantee payment of the bid deposit **within ten days of auction.**
- B. The balance between the bid bond and the Initial Deposit payment is due by 4:30 p.m., **on the day of auction.**
- C. Additional forms and instructions for a Per Sale Bid Bond are available at any DNR region office.

## **Timber Sale Statewide Bid Bond**

- A. Statewide Bid Bonds shall guarantee payment of the Initial Deposit on any statewide timber sale while the bond is in effect.
- B. The Statewide Bid Bond must be received by the Department of Natural Resources, Forest Resources and Conservation Division, PO BOX 47016, Olympia, Washington, 98504-7016, ten days in advance of the auction date. The bond shall be in the amount of \$150,000.00.
- C. Successful bidders using a Statewide Bid Bond must pay the total Initial Deposit payment (10 percent of the total bid price) **by 4:30 p.m., on the day of the auction.**
- D. A Statewide Bid Bond cannot be used to secure the Initial Deposit payment due the day of auction.
- E. Additional forms and instructions for a statewide bid bond are available at any DNR region office.

## **Payments**

The initial deposit for a sale is 10% of the total bid value as submitted by the apparent high bidder (25% if the bidder is a defaulter as defined under WAC 332-140-300) and never less than \$5,000.00 for lump sum sales. For Lump Sum sales appraised at less than \$5,000.00, the entire bid value is due on day of auction.

- a. Apparent high bidders using cash, certified check, cashiers' check or money order as a bid deposit must pay the total Initial Deposit amount by 4:30 p.m. on auction day.
- b. Apparent high bidders using a Timber Sale Per Sale Bid Bond as a bid deposit must pay the difference between the bid deposit and the total initial deposit by 4:30 p.m., on the day of auction. The bid bond amount must be replaced with a certified check, cashiers' check, bank draft, cash, money order, or wire transfer within ten days of the auction.
- c. Apparent high bidders using a Timber Sale Statewide Bid Bond must pay the entire Initial Deposit amount by 4:30 p.m. on the day of auction.

## **Fees due on the day of sale must be paid by 4:30 p.m.**

All payments must be in the form of a certified check, cashiers' check, bank draft, cash, money order or wire transfer.

## **Eligibility to Bid**

In order to bid on State timber sales you must be:

- 18 years of age (or have a co-signer who meets the eligibility requirements)
- Licensed to do business in the State of Washington
- Eligible to bid on Export Restricted timber
- Authorized to submit bids

## **Authorized Representatives**

Company officers or company authorized representatives may bid on State sales, sign State documents or sign checks. A list of authorized representatives and their specific authorities must be submitted in writing to the Department of Natural Resources, Forest Resources and Conservation Division, PO BOX 47016, Olympia, Washington, 98504-7016, ten days in advance of the auction. A company owner or officer must sign this submittal.



**Summary Report of All Sales for the Month of January 2013**

---

**Board Sales**

<u>County</u>	<u>Region</u>	<u>Agree #</u>	<u>FSC</u>	<u>Sale Name</u>	<u>Volume</u>	<u>Value</u>
Clark	Pacific Cascade	88912		MID LACAMAS	3,724	\$965,000.00
Cowlitz	Pacific Cascade	88881		MID SPEELYAI	5,278	\$1,267,000.00
Mason	South Puget	87683		DRIFTER	4,546	\$1,257,000.00
Mason	South Puget	88181		SPLITTER	2,937	\$725,000.00
Pacific	Pacific Cascade	88693		UPPER SEVEN	7,746	\$1,833,000.00
Thurston	Pacific Cascade	88619		SOCKEYE SORTS	5,862	\$2,931,130.00
				<b>Total</b>	=====	=====
					30,093	\$8,978,130.00



*Scan with your smartphone to go directly  
to the January 2013 timber auction page*





**TIMBER NOTICE OF SALE**

**SALE NAME:** MID LACAMAS

**AGREEMENT NO:** 30-088912

**AUCTION:** January 31, 2013 starting at 10:00 a.m., **COUNTY:** Clark  
Pacific Cascade Region Office, Castle Rock, WA

**SALE LOCATION:** Sale located approximately 10 miles east of Battle Ground, Washington.

**PRODUCTS SOLD AND SALE AREA:**

All timber, except leave trees bounded by yellow leave tree area tags, leave trees marked with blue paint, snags, and down timber greater than 36 inches in diameter, bounded by the following: timber sale boundary tags and reprod in Unit 1; timber sale boundary tags and special management area tags in Unit 2. All timber marked with a single band of orange paint, bounded by the following: timber sale boundary tags and special management area tags in Unit 3. All timber bounded by orange right-of-way boundary tags in Unit 4 on part(s) of Sections 30 all in Township 3 North, Range 4 East, Sections 25 all in Township 3 North, Range 3 East, W.M., containing 86 acres, more or less.

**CERTIFICATION:** This sale is certified under the Sustainable Forestry Initiative® program Standard (cert no: BV-SFIS-US09000572)

**ESTIMATED SALE VOLUMES AND QUALITY:**

Species	Avg DBH	Ring Count	Total MBF	MBF by Grade							
				1P	2P	3P	SM	1S	2S	3S	4S
Douglas fir	23.5	7	3,717				214		2,827	577	99
Red alder	12.1		7							3	4
Sale Total			3,724								

**MINIMUM BID:** \$965,000.00 **BID METHOD:** Sealed Bids

**PERFORMANCE SECURITY:** \$100,000.00 **SALE TYPE:** Lump Sum

**EXPIRATION DATE:** September 30, 2014 **ALLOCATION:** Export Restricted

**BID DEPOSIT:** \$96,500.00 or Bid Bond. Said deposit shall constitute an opening bid at the appraised price.

**HARVEST METHOD:** Shovel, Track skidder and Forwarder. Harvesting activities are estimated to be 100% ground-based. Ground-based harvesting equipment shall be restricted to slopes of 40% and less. See clause H-140 and Schedule L for further harvest requirements. A detailed felling and yarding plan shall be required prior to any harvest activities and approved in writing by the Contract Administrator. Ground Based Yarding will not be permitted from November 1 to May 1 unless authorized in writing by the Contract Administrator.

**ROADS:** 78.14 stations of optional construction. 173.95 stations of required pre-haul maintenance. Rock under this contract may be obtained at no cost to the Purchaser from the L-1020 Pit located in Section 31, Township 03 North, Range 04 East, and/or from the L-1401 Pit located in Section 30, Township 03 North, Range 04 East, W.M. Road construction will not be permitted from October 1 to May 1 unless authorized in writing by the Contract Administrator. This restriction applies to road construction and pre-haul maintenance activities. The hauling of forest products will not be permitted from October 1 to June 1 unless authorized in writing by the Contract Administrator on any road without a rocked surface.

## TIMBER NOTICE OF SALE

---

### **ACREAGE DETERMINATION**

**CRUISE METHOD:** The sale acres were determined by GPS. The sale area was cruised using a variable plot cruise method.

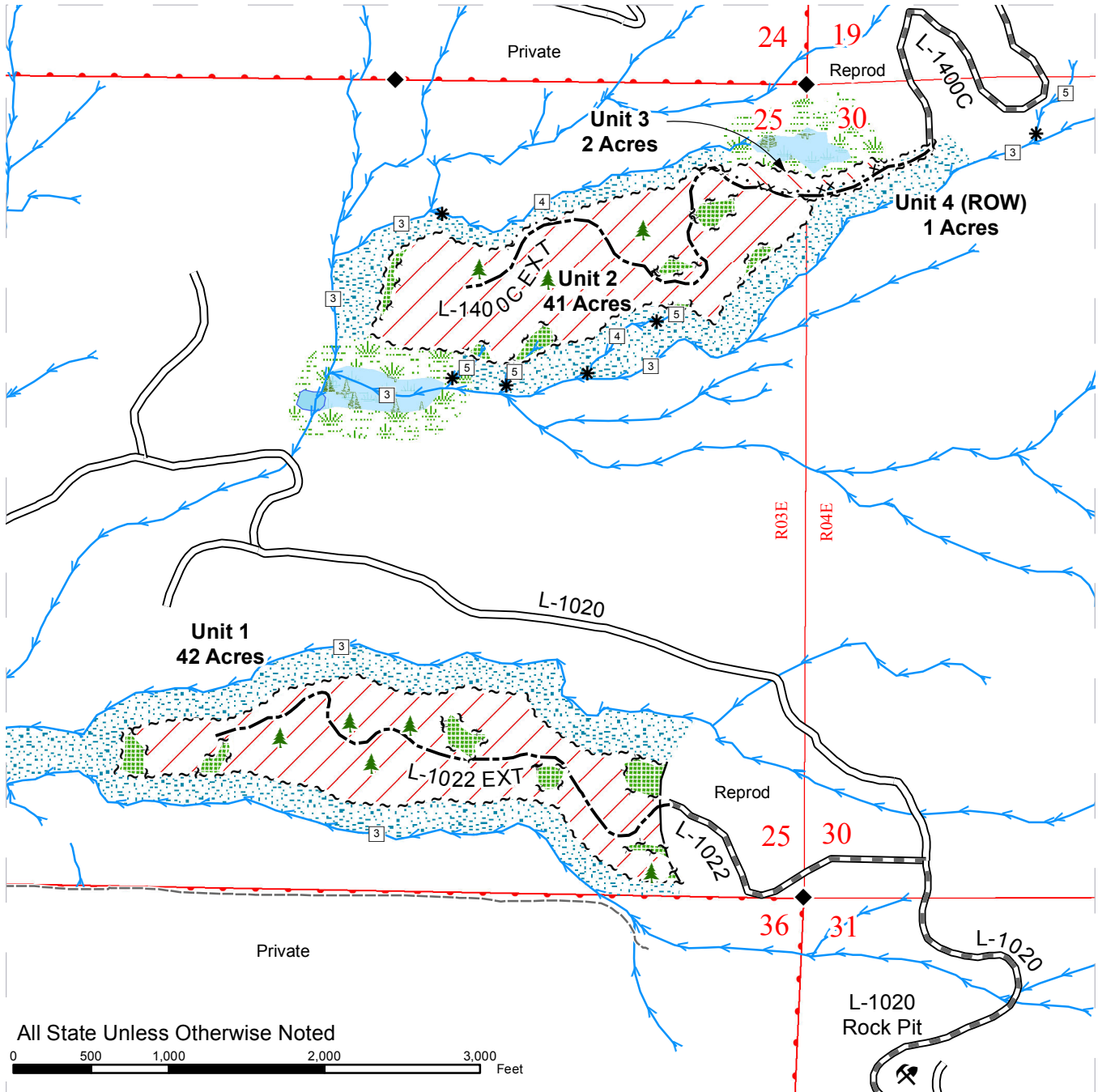
**FEES:** \$49,340.00 is due on day of sale. \$9.00 per MBF is due upon removal. These are in addition to the bid price.

**SPECIAL REMARKS:** This sale may contain poles. Sale contains an estimated 433 mbf of mini-peel or higher quality DF. See driving map for gate locations. Gate keys may be obtained from the Pacific Cascade Region Office.

# TIMBER SALE MAP

**SALE NAME:** MID LACAMAS  
**AGREEMENT#:** 30-088912  
**TOWNSHIP(S):** T03R03E, T03R04E  
**TRUST(S):** State Forest Transfer(1), Capitol Grant(7)

**REGION:** Pacific Cascade Region  
**COUNTY(S):** CLARK  
**ELEVATION RGE:** 724-1417

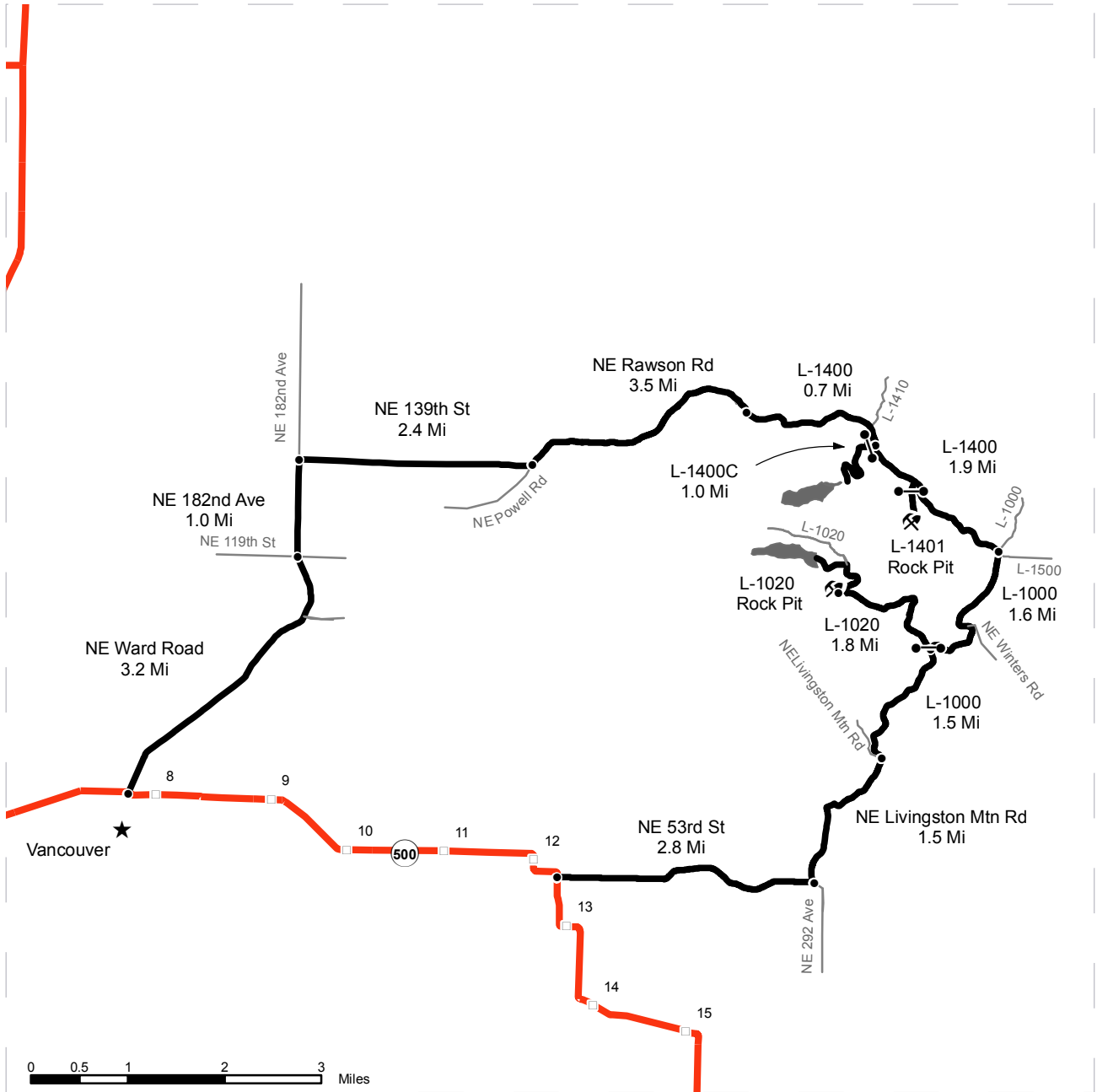


	Variable Retention Harvest		Sale Boundary Tags		Streams
	Variable Density Thinning		Special Mgt Area Tags		Stream Type
	Leave Tree Area		Leave Tree Tags		Stream Type Break
	Riparian Mgt Zone		Right of Way Tags		Monumented Corners
	Forested Wetland		Existing Road		Existing Rock Pit
	Wetland Mgt Zone		Optional Construction		Leave Trees
			Required Pre-Haul Maintenance		Gate (PCP1-1)

# DRIVING MAP

**SALE NAME:** MID LACAMAS  
**AGREEMENT#:** 30-088912  
**TOWNSHIP(S):** T03R03E, T03R04E  
**TRUST(S):** State Forest Transfer(1), Capitol Grant(7)

**REGION:** Pacific Cascade Region  
**COUNTY(S):** CLARK  
**ELEVATION RGE:** 724-1417



<ul style="list-style-type: none"> <li><span style="display: inline-block; width: 20px; height: 10px; background-color: gray; border: 1px solid black;"></span> Timber Sale Unit</li> <li><span style="display: inline-block; width: 20px; height: 5px; background-color: red; border: 1px solid black;"></span> Highways</li> <li><span style="display: inline-block; width: 20px; border-bottom: 2px solid black;"></span> Haul Route</li> <li><span style="display: inline-block; width: 20px; border-bottom: 1px solid black;"></span> Other Route</li> <li><span style="display: inline-block; width: 10px; height: 10px; border: 1px solid black; margin-right: 5px;"></span> Milepost Markers</li> <li><span style="display: inline-block; width: 10px; height: 10px; border: 1px solid black; border-radius: 50%; margin-right: 5px;"></span> Distance Indicator</li> <li><span style="display: inline-block; width: 10px; height: 10px; border: 1px solid black; border-radius: 50%; margin-right: 5px; position: relative;"> <span style="position: absolute; top: 50%; left: 50%; transform: translate(-50%, -50%); font-size: 8px;">X</span> </span> Existing Rock Pit</li> <li><span style="display: inline-block; width: 10px; height: 10px; border: 1px solid black; border-radius: 50%; margin-right: 5px; position: relative;"> <span style="position: absolute; top: 50%; left: 50%; transform: translate(-50%, -50%); font-size: 8px;">●</span> </span> Gate (PCP1-1)</li> </ul>	<p><b><u>DRIVING DIRECTIONS:</u></b></p> <p>Unit 1: From State Route 500 (milepost 12.5), turn east onto NE 53rd Ave and follow for 2.8 miles              Turn left onto NE Livingston Mtn Rd and follow for 1.5 miles              Veer right onto the L-1000 (gravel) and follow for 1.5 miles              Turn left onto the L-1020 (gate) and follow for 1.8 miles to rock pit              Continue 0.4 miles to unit</p> <p>Unit 2: From the L-1000 / L-1020 junction, continue 1.6 miles north on the L-1000              Turn left onto the L-1400 and follow for 1.9 miles              Turn left onto the L-1400C (gate) and follow for 1.0 miles to unit</p>
---	---

**TIMBER NOTICE OF SALE**

**SALE NAME:** MID SPEELYAI

**AGREEMENT NO:** 30-088881

**AUCTION:** January 31, 2013 starting at 10:00 a.m., **COUNTY:** Cowlitz  
Pacific Cascade Region Office, Castle Rock, WA

**SALE LOCATION:** Sale located approximately 30 miles east of Woodland

**PRODUCTS SOLD  
AND SALE AREA:**

All timber, except trees marked with blue paint, trees bounded out by Leave Tree Area tags, all down timber existing 3 years prior to day of sale and snags, bounded by; Timber Sale Boundary tags, reprod and the N-3050 road in Unit 1, Timber Sale Boundary tags and reprod in Unit 2, Timber Sale Boundary tags, reprod and the N-3000 road in Units 3 and 7, Timber Sale Boundary tags, reprod, and the N-3000B road in Unit 4, Timber Sale Boundary tags, reprod, and the N-3000 road in Unit 5, Timber Sale Boundary tags, reprod, private property line and the N-3000 road in Unit 6, Timber Sale Boundary tags in Unit 8, Timber Sale Boundary tags, reprod and private property line in Unit 9, and all timber bounded by Right-of-Way Boundary tags in Units 10, 11 and 12 on part(s) of Sections 5 all in Township 6 North, Range 4 East, Sections 29, 31, 32 and 33 all in Township 7 North, Range 4 East, W.M., containing 148 acres, more or less.

**CERTIFICATION:** This sale is certified under the Sustainable Forestry Initiative® program Standard (cert no: BV-SFIS-US09000572)

**ESTIMATED SALE VOLUMES AND QUALITY:**

Species	Avg DBH	Ring Count	Total MBF	MBF by Grade								
				1P	2P	3P	SM	1S	2S	3S	4S	
Douglas fir	18.1	9	4,784			125	330		2,791	1,278	261	
Hemlock	14.4	9	354				24		125	159	46	
Red alder	12.8		140						8	23	109	
Sale Total			5,278									

**MINIMUM BID:** \$1,267,000.00 **BID METHOD:** Sealed Bids

**PERFORMANCE SECURITY:** \$100,000.00 **SALE TYPE:** Lump Sum

**EXPIRATION DATE:** September 30, 2015 **ALLOCATION:** Export Restricted

**BID DEPOSIT:** \$126,700.00 or Bid Bond. Said deposit shall constitute an opening bid at the appraised price.

**HARVEST METHOD:** Cable, Shovel, Forwarder and Track skidder. Harvesting activities are estimated to be 65% cable and 35% ground-based systems. See Clause H-140 and Schedule L for further Harvesting Specifications. Ground based logging will not be permitted on slopes over 40%. A detailed felling and yarding plan shall be required prior to any harvest activities and approved in writing by the Contract Administrator. All corridors within Units 2 and 3 will be marked and pre-approved by the Contract Administrator before logging. Ground Based Yarding will not be permitted from October 1 to May 1 unless authorized in writing by the Contract Administrator.

**ROADS:** 91.25 stations of optional construction. 19.82 stations of optional reconstruction. 45.32 stations of required pre-haul maintenance. 9.47 stations of light abandonment. Rock under this contract may be obtained at no cost to the Purchaser from the N-3000 Pit

## TIMBER NOTICE OF SALE

---

located in Section 8, Township 06 North, Range 04 East, the N-3050 Pit located in Section 31, Township 07 North, Range 04 East. Potential rock sources are Spur A-1 Pit at station 3+50, Spur A-2 Pit at station 15+50, and Spur B Pit at station 17+79 located in Section 29, Township 07 North, Range 04 East and the Spur D Pit at station 33+66 located in Section 32, Township 07 North, Range 04 East, all in the W.M. quadrant. Road construction will not be permitted from October 1 to May 1 unless authorized in writing by the Contract Administrator. If hauling shall take place only from May 1 to October 1 the purchaser may place less rock than shown in the Rock List on Spur C, Spur D (on stations 23.50 to 33.66), Spur E (stations 01.00 to 07.30), Spur F and Spur G.

### **ACREAGE DETERMINATION**

**CRUISE METHOD:** The sale acres were determined by GPS. The sale area was cruised using a variable plot cruise method.

**FEES:** For the Weyerhaeuser Company Road Use Permit \$2,034.00 is due on day of sale. \$69,900.00 is due on day of sale. \$9.00 per MBF is due upon removal. These are in addition to the bid price.

**SPECIAL REMARKS:** Intermediate supports may be required to prevent soil rutting in Units 3, 7 and 8 off of Spur B and Spur C. No operations will be permitted, including cable lines, in the following areas: Cable Exclusion Zones bounded by blue "Special Management Unit Boundary" tags within the RMZ between Units 2 and 3. This sale contains tight grain wood in the 2 and 3 saw log grades for a component of higher quality wood. See driving map for gate locations. Gate keys may be obtained from the Pacific Cascade Region Office.



# TIMBER SALE MAP

**SALE NAME:** Mid Speelyai

**AGREEMENT#:** 30-088881

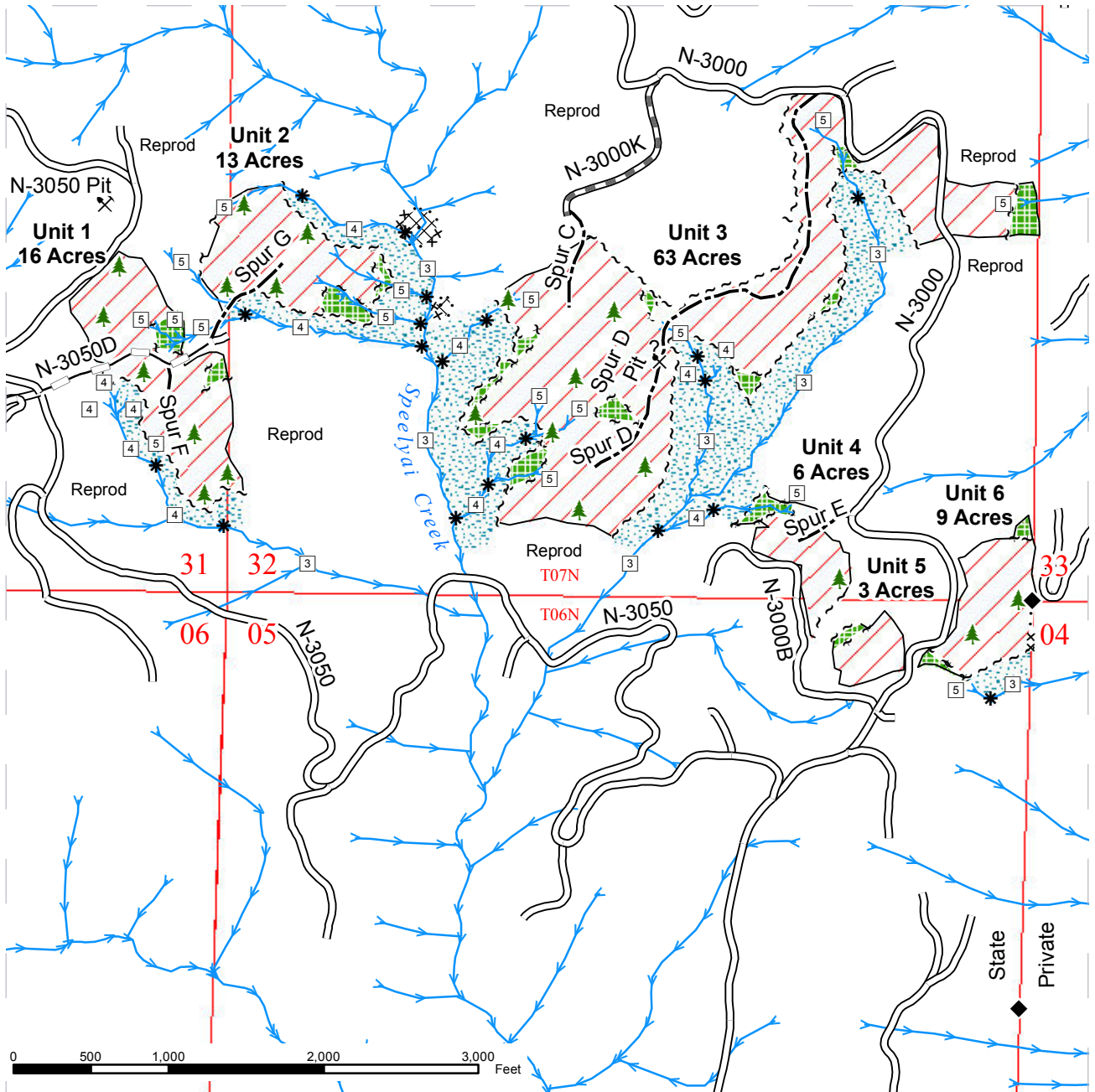
**TOWNSHIP(S):** T07NR04E, T06NR04E

**TRUST(S):** State Forest Transfer Lands(01), Common School and Indemnity(03), Capitol Grant (07)

**REGION:** Pacific Cascade Region

**COUNTY(S):** COWLITZ

**ELEVATION RGE:** 1300-2600 ft

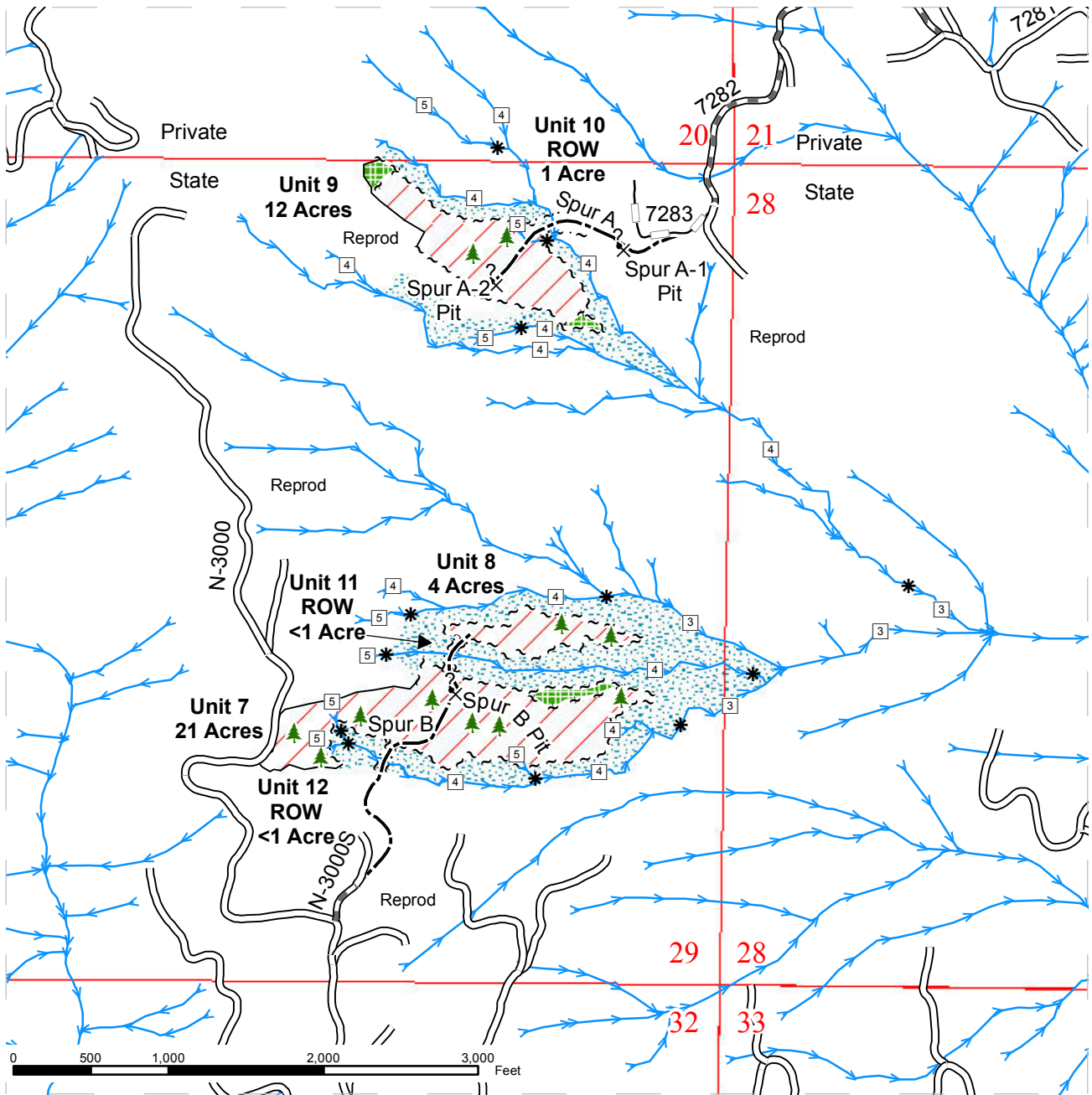


Sale Area	Pink Flagging	Streams
Leave Tree Area	Property Line	Stream Type
Riparian Mgt Zone	Existing Road	Stream Type Break
Cable Exclusion Zone	Required Pre-Haul Maintenance	Leave Trees
Sale Boundary Tags	Optional Construction	Monumented Corner
Leave Tree Tags	Optional Reconstruction	
Right of Way Tags		

# TIMBER SALE MAP

**SALE NAME:** Mid Speelyai  
**AGREEMENT#:** 30-088881  
**TOWNSHIP(S):** T07NR04E, T06NR04E  
**TRUST(S):** State Forest Transfer Lands(01), Common School and Indemnity(03), Capitol Grant (07)

**REGION:** Pacific Cascade Region  
**COUNTY(S):** COWLITZ  
**ELEVATION RGE:** 1300-2600 ft



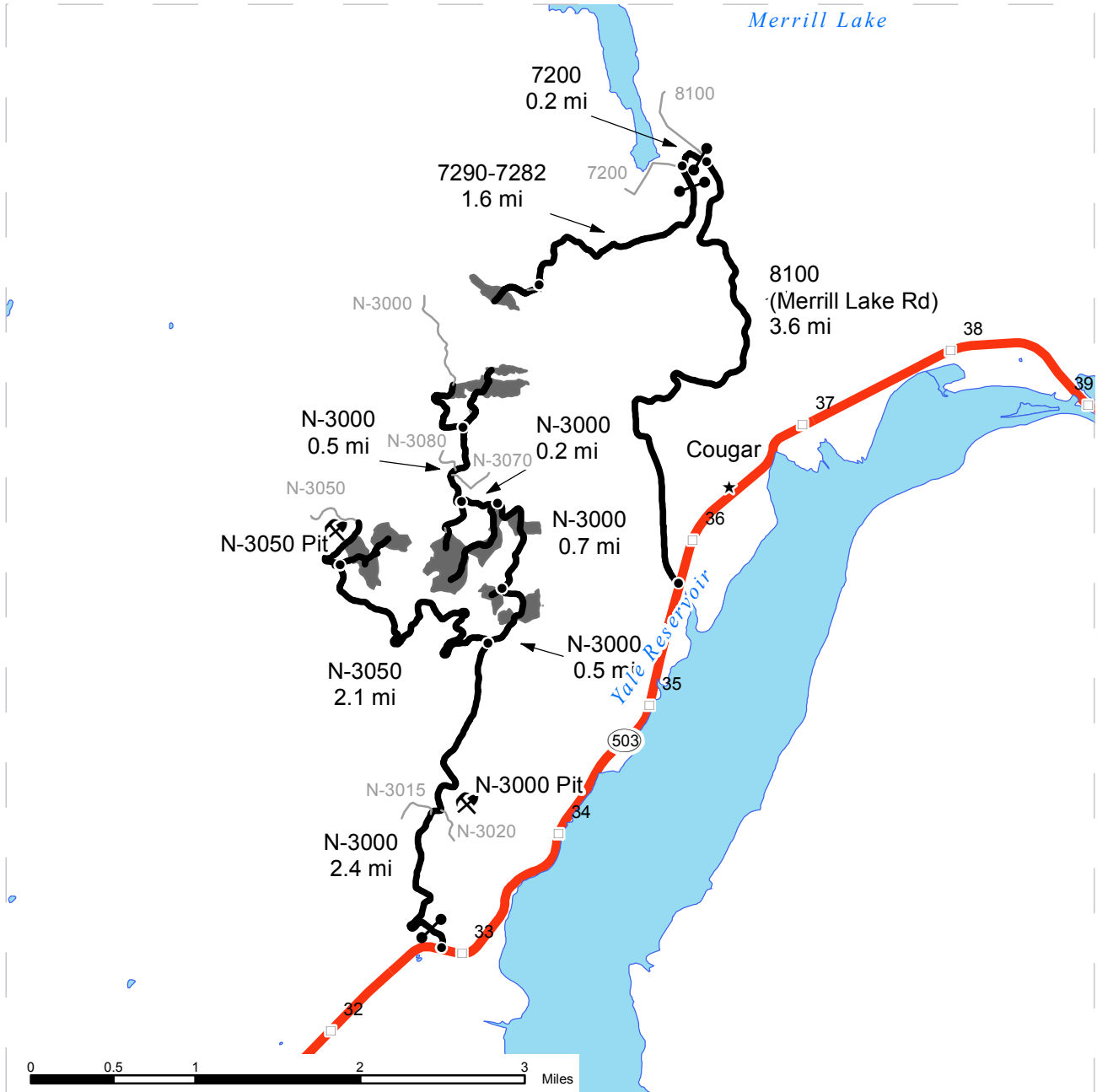
	Sale Area		Pink Flagging		Streams
	Leave Tree Area		Property Line		Stream Type
	Riparian Mgt Zone		Existing Road		Stream Type Break
	Cable Exclusion Zone		Required Pre-Haul Maintenance		Leave Trees
	Sale Boundary Tags		Optional Construction		Monumented Corner
	Leave Tree Tags		Optional Reconstruction		
	Right of Way Tags				



# DRIVING MAP

**SALE NAME:** MID SPEELYAI  
**AGREEMENT#:** 30-088881  
**TOWNSHIP(S):** T07NR04E, T06NR04E  
**TRUST(S):** State Forest Transfer Lands(01), Common School and Indemnity(03), Capitol Grant(07)

**REGION:** Pacific Cascade Region  
**COUNTY(S):** COWLITZ  
**ELEVATION RGE:** 1300-2600 ft



- Timber Sale Unit
- Highways
- Haul Route
- Other Route
- Milepost Markers
- Distance Indicator
- Gate
- Existing Rock Pit

**Driving Directions:**

**Access to Units 1 thru 8**  
 From Milepost 32.8 on State Route 503, turn north onto the N-3000 Road (Gate, PCP1-1) for 2.4 miles to the N-3050 junction. To Units 1 & 2, turn left onto the N-3050 for 2.1 miles to the N-3050D (N-3050D is not drivable). Continue north on the N-3000 0.2 miles to Units 5 & 6, 0.5 miles to Unit 4 (Spur E) and 0.7 miles to Unit 3 (Spur D) and an additional 0.2 miles to the N-3000K and Spur C. From the N-3000K junction, continue on the N-3000, 0.5 miles to the N-3000S and Spur B to Units 7 & 8.

**Access to Units 9 & 10**  
 From Milepost 35.8 on State Route 503 turn north on 8100 (Merrill Lake Rd) for 3.6 miles. Turn left on 7200 (Gate - PCP1 or LA) for 0.2 mi, turn left on 7290 (Gate - 786 or LA), which becomes 7281. At 0.9 mi go left on 7282 for 0.7 mi to 7283 jct. (Cannot drive beyond here). Spur A off 7283 enters Units 9 and 10.





**TIMBER NOTICE OF SALE**

**SALE NAME: DRIFTER**

**AGREEMENT NO: 30-087683**

**AUCTION:** January 29, 2013 starting at 10:00 a.m., **COUNTY:** Mason  
South Puget Sound Region Office, Enumclaw, WA

**SALE LOCATION:** Sale located approximately 11 miles north of Hoodspport.

**PRODUCTS SOLD AND SALE AREA:**

All timber bounded by white timber sale boundary tags, reprod and the 1500, 1700, 1710 and 1720 Roads, except those trees marked with blue paint or bounded out by yellow leave tree area tags in Unit #1; all timber bounded by white timber sale boundary tags and the 1000 and 1700 Roads, except those trees marked with blue paint or bounded out by yellow leave tree area tags and down timber existing on the day of sale in Unit #2; all timber bounded by white timber sale boundary tags, reprod and the 1700 Road, except those trees marked with blue paint or bounded out by yellow leave tree area tags and down timber existing on the day of sale in Unit #3; all timber bounded by orange right of way tags on part(s) of Sections 23, 24, 25 and 26 all in Township 23 North, Range 4 West, W.M., containing 161 acres, more or less.

**CERTIFICATION:** This sale is certified under the Sustainable Forestry Initiative® program Standard (cert no: BV-SFIS-US09000572)

**ESTIMATED SALE VOLUMES AND QUALITY:**

Species	Avg DBH	Ring Count	Total MBF	MBF by Grade								
				1P	2P	3P	SM	1S	2S	3S	4S	UT
Douglas fir	16.9	7	3,790				249		2,189	1,085	267	
Hemlock	14.2	8	337						144	123	70	
Red alder	13.8		256						80	55	121	
Red cedar	11.5		113							44	69	
Maple	14.3		50						19	12	19	
Sale Total			4,546									

**MINIMUM BID:** \$1,257,000.00 **BID METHOD:** Sealed Bids

**PERFORMANCE SECURITY:** \$75,000.00 **SALE TYPE:** Lump Sum

**EXPIRATION DATE:** September 30, 2014 **ALLOCATION:** Export Restricted

**BID DEPOSIT:** \$125,700.00 or Bid Bond. Said deposit shall constitute an opening bid at the appraised price.

**HARVEST METHOD:** Cable and ground based equipment are allowed with ground based equipment limited to sustained slopes that are 40 percent and less. Yarding may be restricted during wet weather if rutting becomes excessive in the opinion of the Contract Administrator. If Purchaser elects to shovel log, shovel logging shall be done in accordance with the attached Schedule A, which is part of this contract.

Falling, yarding and timber haul will not be permitted from November 1 to April 30, nor on weekends or state recognized holidays, unless authority to do so is granted, in writing, by the Contract Administrator. If permission is granted to operate from November 1 to April 30, the Purchaser shall be required to provide a "Winter Operating Plan" to include

## TIMBER NOTICE OF SALE

---

further protection of water, soil, roads and other forest assets at the Purchaser's expense. The "Winter Operating Plan" must be approved in writing by the Contract Administrator.

### **ROADS:**

20.80 stations of required construction. 5.42 stations of required reconstruction. 26.18 stations of optional construction. 287.51 stations of required pre-haul maintenance. 17.42 stations of required abandonment. 26.18 stations of abandonment, if constructed. Cross section designs are available at the South Puget Sound Region office upon request. Purchaser maintenance on all roads used.

Road construction and rock haul will not be permitted from November 1 to April 30, nor on weekends or state recognized holidays, unless authority to do so is granted, in writing, by the Contract Administrator. If permission is granted to operate from November 1 to April 30, the Purchaser shall be required to provide a "Winter Operating Plan" to include further protection of water, soil, roads and other forest assets at the Purchaser's expense. The "Winter Operating Plan" must be approved in writing by the Contract Administrator.

### **ACREAGE DETERMINATION**

#### **CRUISE METHOD:**

Unit acreage was determined by traversing boundaries by Garmin GPS. Right of way acreage was determined by multiplying length times width. Traverse GPS data files are available upon request by emailing [audrey.mainwaring@dnr.wa.gov](mailto:audrey.mainwaring@dnr.wa.gov) or calling Audrey Mainwaring at (360) 802-7001. Unit #1 was cruised using a variable plot sample with a BAF of 40 on a 295x295 foot grid. Unit #2 was cruised using a variable plot sample with a BAF of 27.78 on a 295x295 foot grid. Unit #3 was cruised using a variable plot sample with a BAF of 40 on a 198x198 foot grid.

### **FEES:**

\$60,235.00 is due on day of sale. \$9.00 per MBF is due upon removal. These are in addition to the bid price.

### **SPECIAL REMARKS:**

Purchaser shall pull vine maple and leave roots exposed and detached from the soil in the ground based harvest area. Purchaser shall cut vine maple and sever from the stump in the cable harvest area.

There are dispersed old growth leave trees that need to be protected within Unit 1 cable yarding area.

Gate #4 located on the 1000 Road is open for public access from April 15th through October 1st. The gate will remain locked for the rest of the year.

Contact Mike Davies at (360) 801-0682 or Ben Blocher at (360) 463-1829 for updated access information and to obtain a Master A383 key, see map for gate locations.

An HPA has been obtained for the removal of an existing pipe and the installation of a 132"x40' culvert on the 1000 Road, the removal of an existing culvert on the 1050 Road and year round cable yarding over Type 3 streams.

Operations may be suspended in the event of wet weather. If the Purchaser elects to continue operations, additional road work above and beyond what is required, at the Purchaser's expense, in the road plan may be required on any and all roads when, in the opinion of the Contract Administrator, there is the potential for sediment delivery into any typed water.

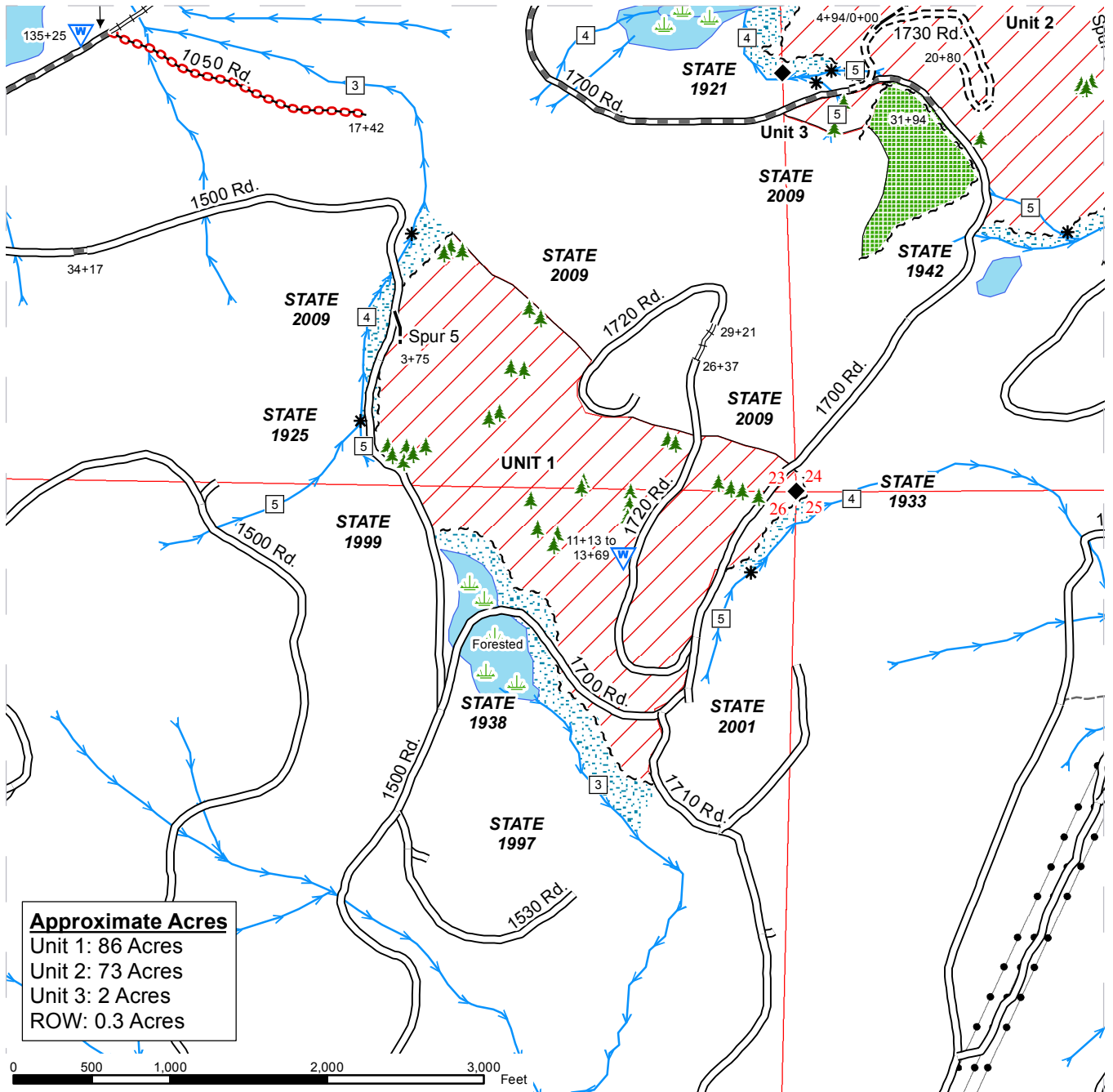
An easement is pending for a portion of the 1000 Road.



# TIMBER SALE MAP

**SALE NAME:** DRIFTER  
**AGREEMENT#:** 30-087683  
**TOWNSHIP(S):** T23R04W  
**TRUST(S):** Common School and Indemnity(3), Charitable/Educational/Penal & Reformatory Instit.(6)

**REGION:** South Puget Sound Region  
**COUNTY(S):** MASON  
**ELEVATION RGE:** 680-1605 ft.



**Approximate Acres**  
 Unit 1: 86 Acres  
 Unit 2: 73 Acres  
 Unit 3: 2 Acres  
 ROW: 0.3 Acres

	Timber Sale Area		BPA Roads		Stream Type Break
	RMZ/WMZ Area		Required Construction		Wetland
	Leave Tree Area		Required Reconstruction		Leave Tree Area - marked with yellow 'Leave Tree Area' tags or blue paint
	White Timber Sale Boundary Tags		Required Pre-Haul Maintenance		Waste Area
	Reprod		Required Abandonment		Monumented Corners
	Orange Right of Way Tags		Optional Construction		Rock Pit
	Yellow 'Leave Tree Area' Tags		Open Water		DNR Managed Lands
	BPA Transmission Lines		Streams		Public Land Survey Sections
	Existing Roads		Water Type		

Prepared By: cdun490

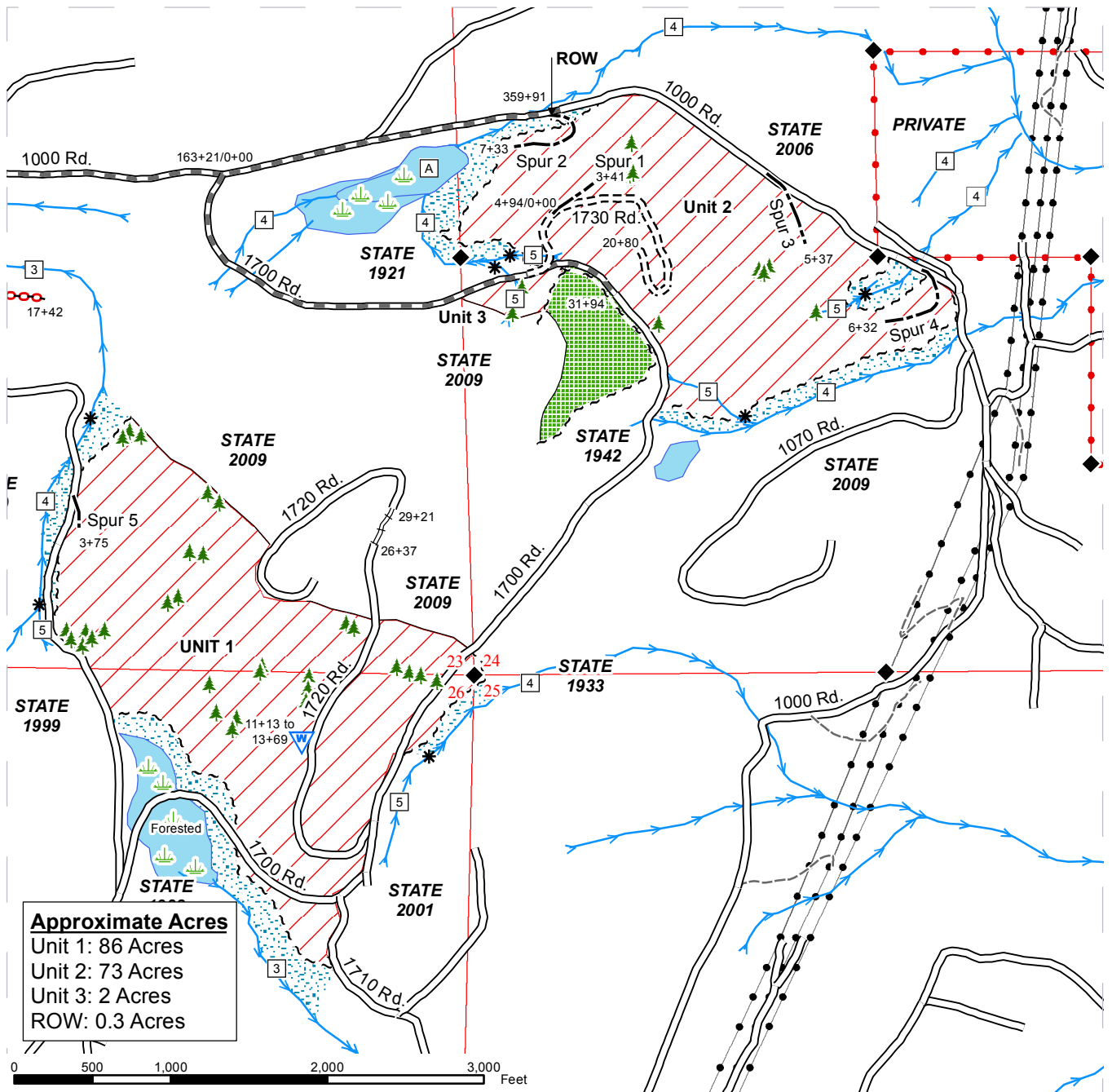
Creation Date: 4/24/2012

Modification Date: 11/6/2012

# TIMBER SALE MAP

**SALE NAME:** DRIFTER  
**AGREEMENT#:** 30-087683  
**TOWNSHIP(S):** T23R04W  
**TRUST(S):** Common School and Indemnity(3), Charitable/Educational/Penal & Reformatory Instit.(6)

**REGION:** South Puget Sound Region  
**COUNTY(S):** MASON  
**ELEVATION RGE:** 680-1605 ft.



**Approximate Acres**  
 Unit 1: 86 Acres  
 Unit 2: 73 Acres  
 Unit 3: 2 Acres  
 ROW: 0.3 Acres

	Timber Sale Area		BPA Roads		Stream Type Break
	RMZ/WMZ Area		Required Construction		Wetland
	Leave Tree Area		Required Reconstruction		Leave Tree Area - marked with yellow 'Leave Tree Area' tags or blue paint
	White Timber Sale Boundary Tags		Required Pre-Haul Maintenance		Waste Area
	Reprod		Required Abandonment		Monumented Corners
	Orange Right of Way Tags		Optional Construction		Rock Pit
	Yellow 'Leave Tree Area' Tags		Open Water		DNR Managed Lands
	BPA Transmission Lines		Streams		Public Land Survey Sections
	Existing Roads		Water Type		

Prepared By: cdun490

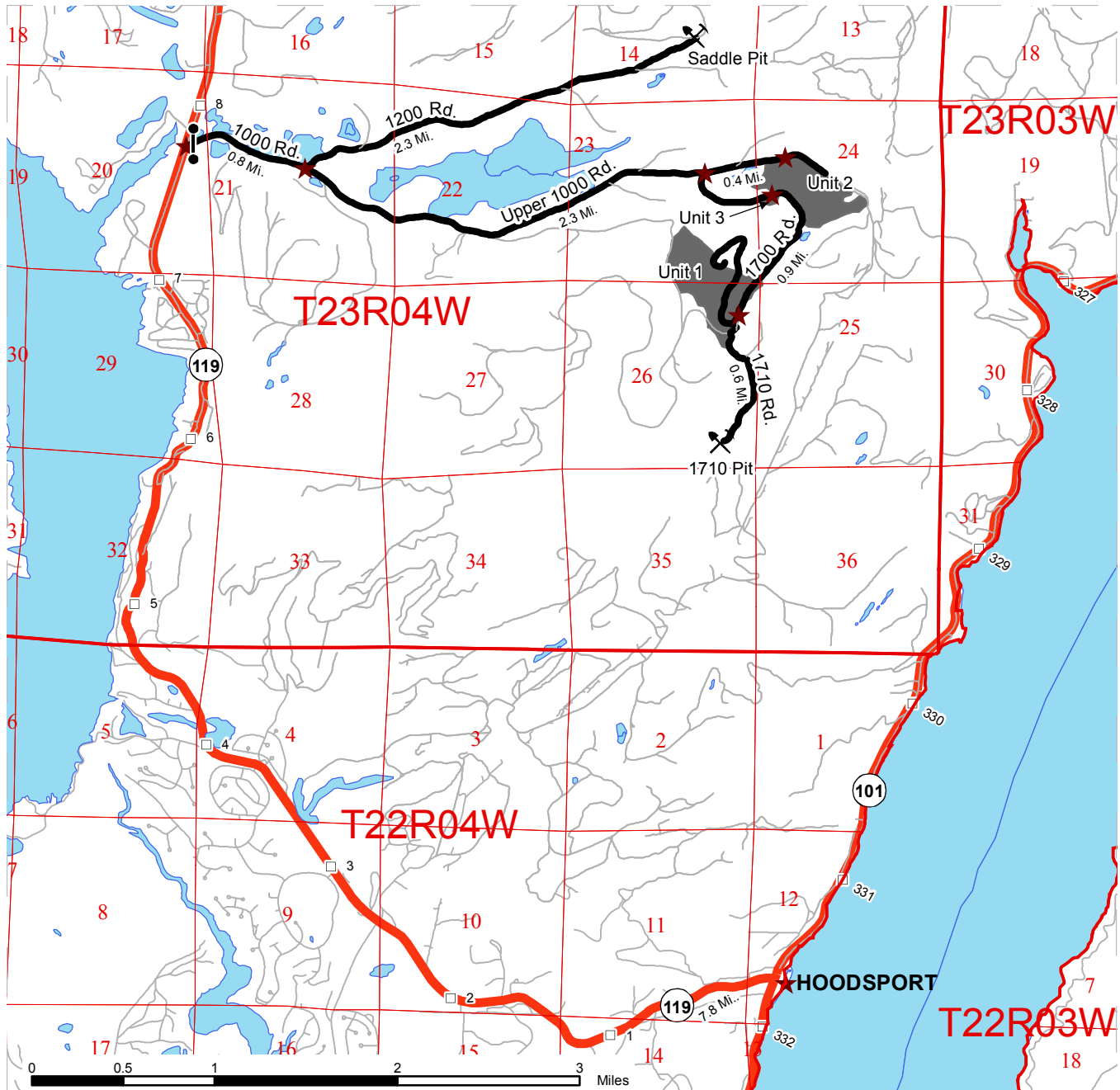
Creation Date: 4/24/2012

Modification Date: 11/6/2012

# DRIVING MAP

SALE NAME: DRIFTER  
 AGREEMENT#: 30-087683  
 TOWNSHIP(S): T23R04W  
 TRUST(S): Common School and Indemnity(3), Charitable/Educational/Penal & Reformatory Instit.(6)

REGION: South Puget Sound Region  
 COUNTY(S): MASON  
 ELEVATION RGE: 680-1605 ft.



<ul style="list-style-type: none"> <li><span style="display: inline-block; width: 20px; height: 10px; background-color: gray; margin-right: 5px;"></span> Timber Sale Unit</li> <li><span style="display: inline-block; width: 20px; border-bottom: 1px solid black; margin-right: 5px;"></span> Existing Roads</li> <li><span style="display: inline-block; width: 20px; border-bottom: 3px solid black; margin-right: 5px;"></span> Viewing Route</li> <li><span style="display: inline-block; width: 20px; height: 10px; background-color: lightblue; margin-right: 5px;"></span> Open Water</li> <li><span style="display: inline-block; width: 10px; height: 10px; border: 1px solid black; margin-right: 5px;"></span> Milepost Markers</li> <li><span style="display: inline-block; width: 10px; height: 10px; border: 1px solid black; border-radius: 50%; margin-right: 5px;"></span> Gate: Master A383</li> <li><span style="display: inline-block; width: 10px; height: 10px; border: 1px solid black; margin-right: 5px;"></span> Rock Pit</li> <li><span style="display: inline-block; width: 10px; height: 10px; border: 1px solid black; margin-right: 5px;"></span> Distance Indicator</li> </ul>	<p><b>DRIVING DIRECTIONS:</b></p> <p>From Hoodspport travel north on SR 119 for 7.8 miles and turn right onto the upper 1000 Rd. Drive 3.5 miles to access the SW portion of Unit 2 and all of Unit 3.</p> <p><u>For Unit 1:</u>              From Unit 2, head west on the 1000 Rd for approximately 0.4 miles to the 1700 Rd. Travel on the 1700 Rd. for approximately 1.4 miles and turn right onto the 1720 Rd. to the start of Unit 1.</p> <p><u>1710 Pit:</u>              Travel approximately 3.0 miles on the 1000 Rd, and turn right onto the 1700 Rd. Travel 1.5 miles on the 1700 Rd. and turn left onto the 1710 Rd. Travel 0.6 miles on the 1710 Rd. to the pit.</p> <p><u>Saddle Pit:</u>              Drive approximately 0.8 miles on the 1000 Rd. to the 1200 Rd. Travel 2.3 miles on the 1200 Rd. to the rock pit.</p>
---	---



**TIMBER NOTICE OF SALE**

**SALE NAME: SPLITTER**

**AGREEMENT NO: 30-088181**

**AUCTION:** January 29, 2013 starting at 10:00 a.m., **COUNTY:** Mason  
South Puget Sound Region Office, Enumclaw, WA

**SALE LOCATION:** Sale located approximately 16 miles northwest of Hoodspport.

**PRODUCTS SOLD AND SALE AREA:** All timber bounded by white timber sale boundary tags, reprod and the 2420 Road, except those trees marked with blue paint or bounded out by yellow leave tree area tags in Unit #1 on part(s) of Section 6 all in Township 23 North, Range 3 West, Sections 1 all in Township 23 North, Range 4 West, W.M., containing 91 acres, more or less.

**CERTIFICATION:** This sale is certified under the Sustainable Forestry Initiative® program Standard (cert no: BV-SFIS-US09000572)

**ESTIMATED SALE VOLUMES AND QUALITY:**

Species	Avg DBH	Ring Count	Total MBF	MBF by Grade								
				1P	2P	3P	SM	1S	2S	3S	4S	UT
Douglas fir	17.7	10	2,574				147		1,547	547	333	
Hemlock	14.6	11	159						66	49	44	
Red alder	14.5		139						18	36	85	
Maple	15.6		53						25		28	
White pine	10.1		8								8	
Red cedar	22.4		4							2	2	
Sale Total			2,937									

**MINIMUM BID:** \$725,000.00 **BID METHOD:** Sealed Bids

**PERFORMANCE SECURITY:** \$25,000.00 **SALE TYPE:** Lump Sum

**EXPIRATION DATE:** August 31, 2014 **ALLOCATION:** Export Restricted

**BID DEPOSIT:** \$72,500.00 or Bid Bond. Said deposit shall constitute an opening bid at the appraised price.

**HARVEST METHOD:** Cable and ground based equipment with ground based equipment limited to sustained slopes that are 40 percent and less. It is estimated that 90 percent of this harvest unit is uphill cable yarding. If Purchaser elects to shovel log, shovel logging shall be done in accordance with the attached Schedule A, which is part of this contract. Yarding may be restricted during wet weather if rutting becomes excessive in the opinion of the Contract Administrator.

Falling, yarding and timber haul will not be permitted from November 1 to April 30, nor on weekends or state recognized holidays, unless authority to do so is granted, in writing, by the Contract Administrator. If permission is granted to operate from November 1 to April 30, the Purchaser shall be required to provide a "Winter Operating Plan" to include further protection of water, soil, roads and other forest assets at the Purchaser's expense. The "Winter Operating Plan" must be approved in writing by the Contract Administrator prior to commencing any winter operations.

## TIMBER NOTICE OF SALE

---

**ROADS:** 11.09 stations of optional construction. 102.84 stations of required pre-haul maintenance. 11.09 stations of abandonment, if constructed. Purchaser maintenance on the 2420 and 2422 Roads and Spur 1. Designated maintenance on all other roads used.

Road construction and rock haul will not be permitted from November 1 to April 30, nor on weekends or state recognized holidays, unless authority to do so is granted, in writing, by the Contract Administrator. If permission is granted to operate from November 1 to April 30, the Purchaser shall be required to provide a "Winter Operating Plan" to include further protection of water, soil, roads and other forest assets at the Purchaser's expense. The "Winter Operating Plan" must be approved in writing by the Contract Administrator.

### ACREAGE DETERMINATION

**CRUISE METHOD:** Acreage was determined by traversing boundaries by GPS. GPS data files are available upon request by emailing [audrey.mainwaring@dnr.wa.gov](mailto:audrey.mainwaring@dnr.wa.gov) or calling Audrey Mainwaring at (360) 802-7001. The unit was cruised using a variable plot sample with a BAF of 46.9 on a 260x260 foot grid.

**FEES:** \$38,915.00 is due on day of sale. \$9.00 per MBF is due upon removal. These are in addition to the bid price.

**SPECIAL REMARKS:** This sale contains high quality Douglas fir.

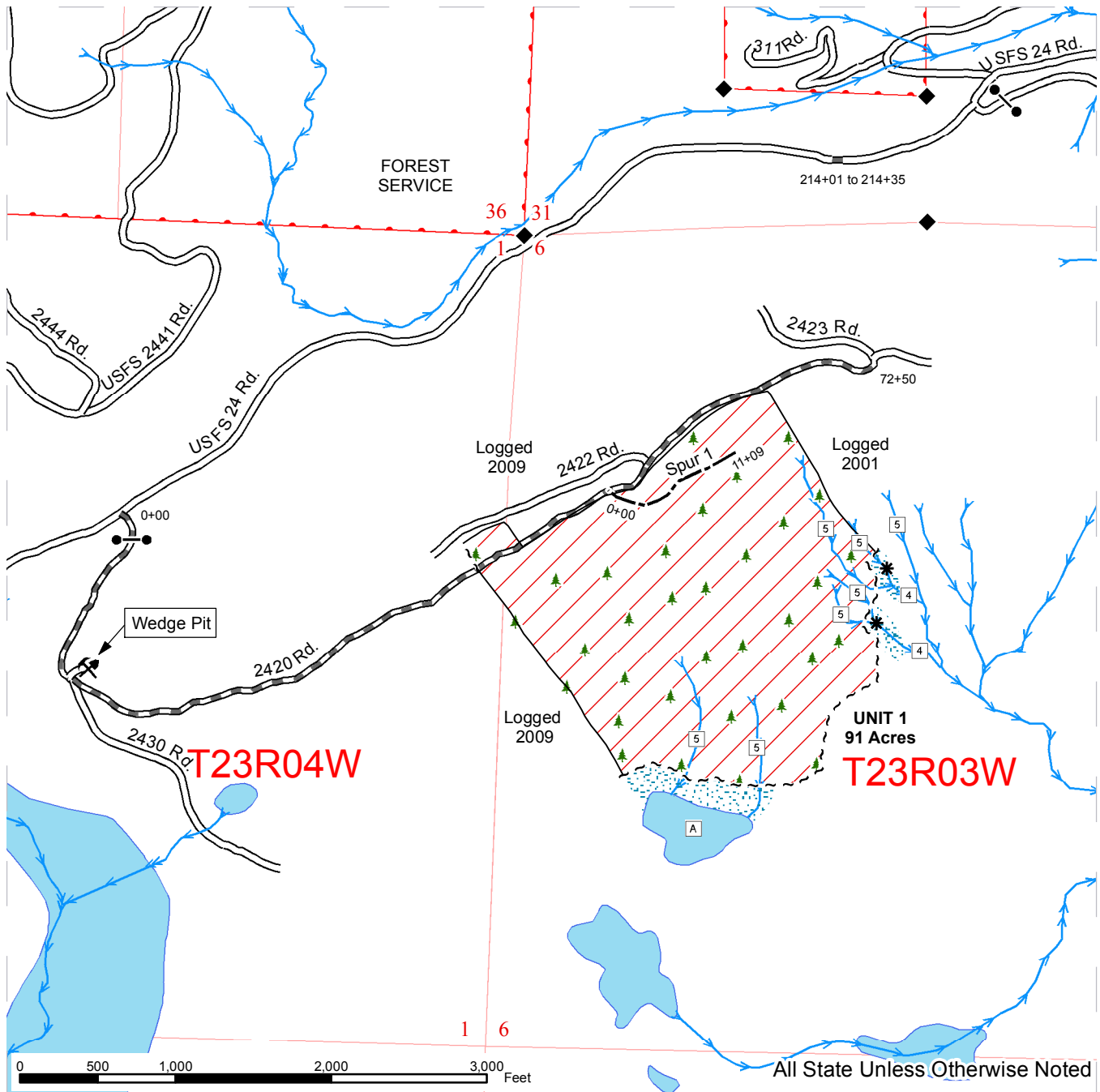
Purchaser shall pull vine maple and leave roots exposed and detached from the soil in the ground based harvest area. Purchaser shall cut vine maple and sever from the stump in the cable harvest area.

See map for gate locations. Gate keys may be obtained from the South Puget Sound Region Office or by contacting Mike Davies at (360) 801-0682 or Gus Gerrits at (360) 801-6915.

# TIMBER SALE MAP

**SALE NAME:** SPLITTER  
**AGREEMENT#:** 30-088181  
**TOWNSHIP(S):** T23R03W, T23R04W  
**TRUST(S):** CEP and RI (6), Scientific School (10)

**REGION:** South Puget Sound Region  
**COUNTY(S):** MASON  
**ELEVATION RGE:** 820-1585 ft.



Timber Sale Area	Open Water	Monumented Corners
WMZ/RMZ Area	Streams	Public Land Survey Sections
White Timber Sale Boundary Tags	Stream Type Break	DNR Managed Lands
Reprod	Stream Type	
Existing Roads	Rock Pit	
Required Pre-haul Maintenance	Gate: Master 383	
Optional Construction	Leave Tree Area - Marked with yellow 'Leave Tree Area' tags or blue paint	

Prepared By: Gus G.  
Carla F.

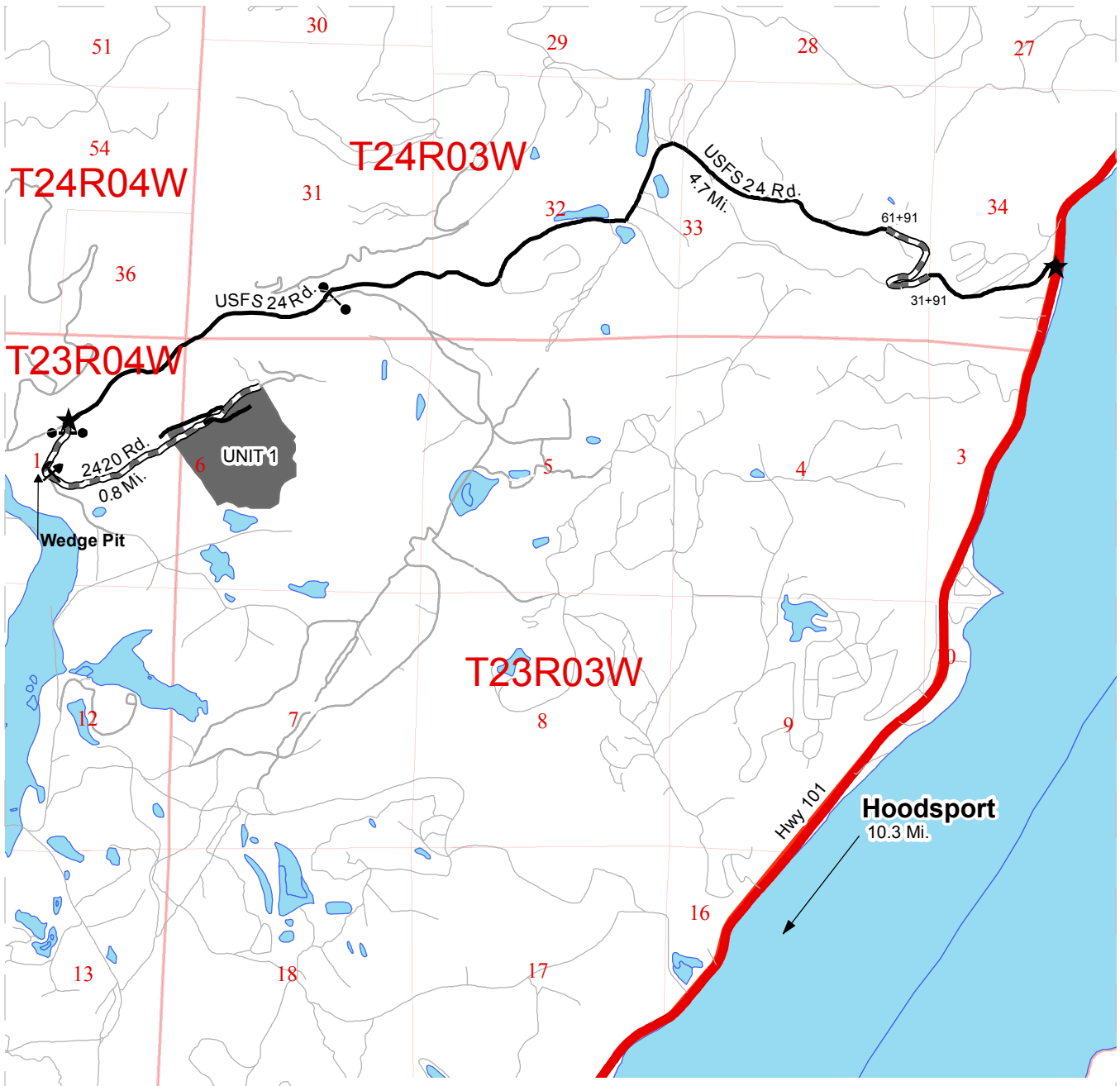
Creation Date: 6/25/2012

Modification Date: 11/6/2012

# DRIVING MAP

**SALE NAME:** SPLITTER  
**AGREEMENT#:** 30-088181  
**TOWNSHIP(S):** T23R03W, T23R04W  
**TRUST(S):** CEP and RI(6), Scientific School(10)

**REGION:** South Puget Sound Region  
**COUNTY(S):** Mason  
**ELEVATION RGE:** 820-1585 ft.



	Timber Sale Unit
	Existing Roads
	Viewing Route
	Required Pre-haul Maintenance
	Highways
	Open Water
	Distance Indicators
	Rock Pit
	Gate: Master 383



**DRIVING DIRECTIONS:**

From Hoodspport: Travel north on US-101 10.3 miles. Turn left onto USFS Rd. 24 (also known as Jorstad Creek Rd.). Continue on USFS Rd. 24 for 4.7 miles. Turn left onto the 2420 Road, go 0.8 miles to enter the unit.





**TIMBER NOTICE OF SALE**

**SALE NAME:** UPPER SEVEN

**AGREEMENT NO:** 30-088693

**AUCTION:** January 31, 2013 starting at 10:00 a.m., **COUNTY:** Pacific  
Pacific Cascade Region Office, Castle Rock, WA

**SALE LOCATION:** Sale located approximately 10 miles west of Doty, Washington.

**PRODUCTS SOLD  
AND SALE AREA:**

All timber, except leave trees bounded by yellow Leave Tree Area tags, leave trees marked with blue paint, snags, and all down timber existing 5 years prior to the day of sale, bounded by the following: Timber Sale Boundary tags in Units 1, 2 & 3. All timber bounded by orange Right-of-Way Boundary tags in Units 4 & 5 on part(s) of Sections 14, 15 and 23 all in Township 13 North, Range 6 West, W.M., containing 181 acres, more or less.

**CERTIFICATION:** This sale is certified under the Sustainable Forestry Initiative® program Standard (cert no: BV-SFIS-US09000572)

**ESTIMATED SALE VOLUMES AND QUALITY:**

Species	Avg DBH	Ring Count	Total MBF	MBF by Grade							
				1P	2P	3P	SM	1S	2S	3S	4S
Douglas fir	22.1	7	4,364				50		3,364	842	108
Hemlock	14.5	8	2,345						922	1,122	301
Red alder	14.4		1,000						135	427	438
Red cedar	20.9		37							34	3
Sale Total			7,746								

**MINIMUM BID:** \$1,833,000.00 **BID METHOD:** Sealed Bids

**PERFORMANCE SECURITY:** \$100,000.00 **SALE TYPE:** Lump Sum

**EXPIRATION DATE:** December 31, 2014 **ALLOCATION:** Export Restricted

**BID DEPOSIT:** \$183,300.00 or Bid Bond. Said deposit shall constitute an opening bid at the appraised price.

**HARVEST METHOD:** Cable and Shovel. Harvesting activities are estimated to be 20% cable and 80% ground based harvesting. Ground based equipment shall be restricted to slopes of 40% and less, and during dry soil conditions. See clause H-140 and Schedule L for further harvest requirements. A detailed felling and yarding plan shall be required prior to any harvest activities and approved in writing by the Contract Administrator. Shovel Yarding will not be permitted from November 1 to April 30 unless authorized in writing by the Contract Administrator.

**ROADS:** 114.98 stations of required construction. 62.68 stations of optional construction. 53.30 stations of required pre-haul maintenance. Rock for construction and/or pre-haul maintenance under this contract may be obtained at no cost to the Purchaser from the Walville Quarry located in Section 23, Township 13 North, Range 06 West, W.M. Rock for pre-haul maintenance of roads under this contract may be obtained from an existing stockpile in the Walville Quarry. Purchaser shall remove no more than 100 cubic yards of 2 1/2 INCH MINUS CRUSHED rock from this stockpile. Rock for construction and/or pre-haul maintenance may be obtained from any commercial source as approved

## TIMBER NOTICE OF SALE

---

in writing by the Contract Administrator. On the RCP Mainline (Sta. 280+65) the Purchaser shall furnish and install a metal gate in accordance with the GATE DETAIL. Road construction will not be permitted from September 30 to May 1 unless authorized in writing by the Contract Administrator.

### **ACREAGE DETERMINATION**

**CRUISE METHOD:** Unit acreage was determined by GPS. Right-of-Way acreage was estimated using road length and approximate clearing limits. Cruise was completed using a variable plot cruise method.

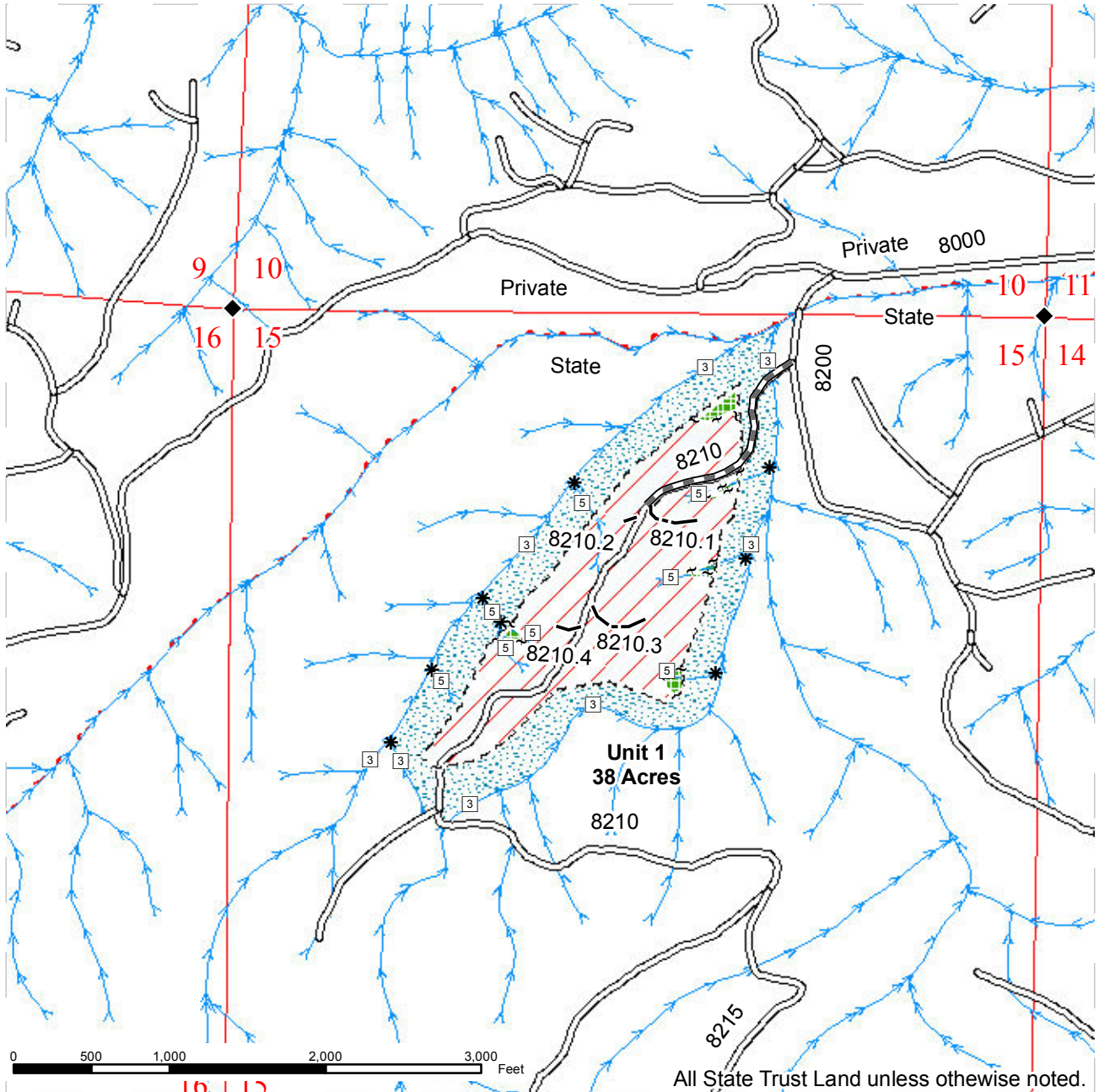
**FEES:** \$102,640.00 is due on day of sale. \$9.00 per MBF is due upon removal. These are in addition to the bid price.

**SPECIAL REMARKS:** The sale contains an estimated 253 MBF DF mini-peel or better quality timber. See driving map for gate locations. Gate keys may be obtained from the Pacific Cascade Region Office.

# TIMBER SALE MAP

**SALE NAME:** UPPER SEVEN  
**AGREEMENT#:** 30-088693  
**TOWNSHIP(S):** T13R06W  
**TRUST(S):** State Forest Purchase(2), Common School and Indemnity(3), Agricultural School(4), University Repayment(41)

**REGION:** Pacific Cascade Region  
**COUNTY(S):** PACIFIC  
**ELEVATION RGE:** 817-1983



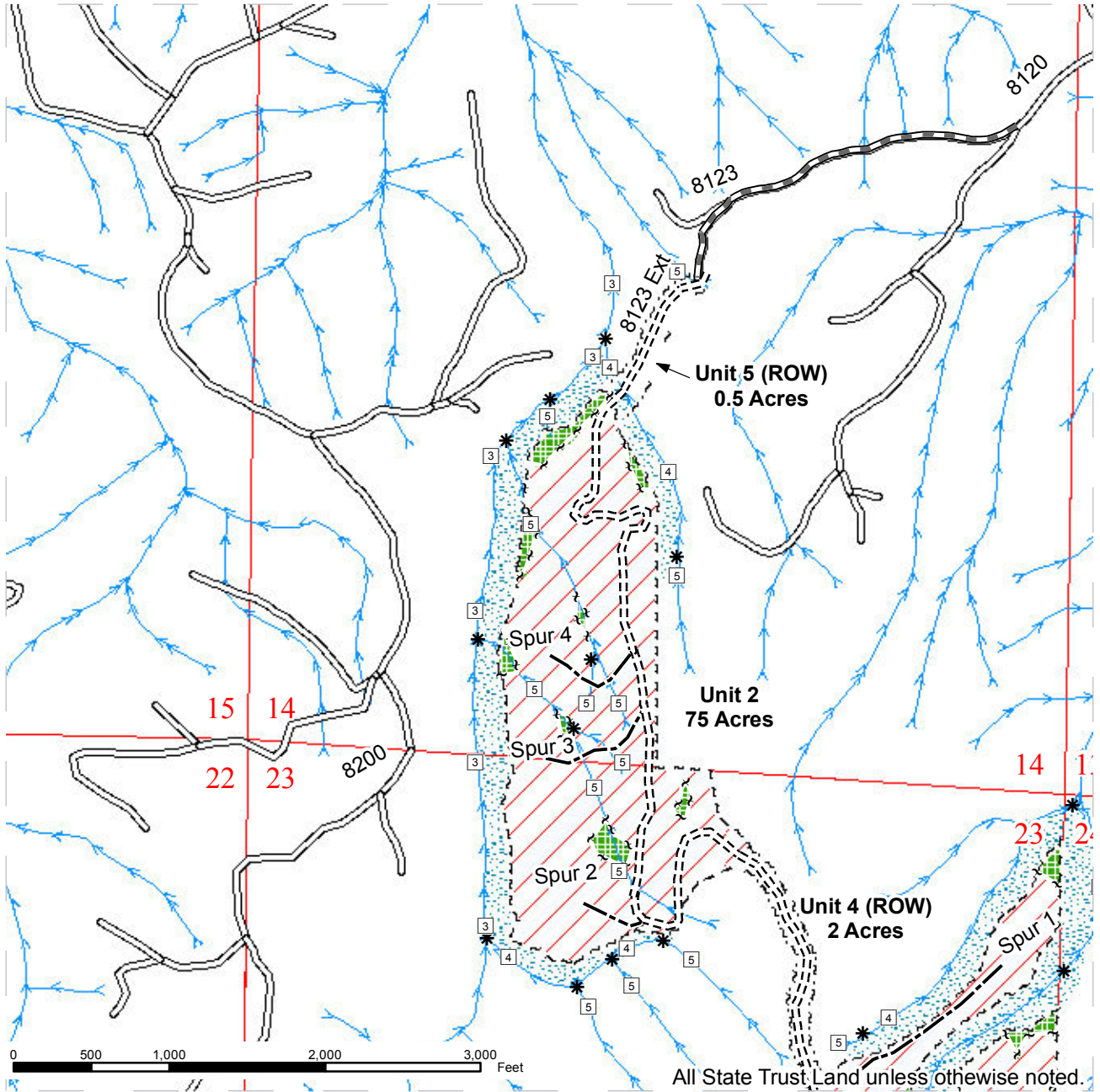
	Sale Area		Existing Road		Streams
	Leave Tree Area		Required Construction		Stream Types
	Riparian Mgt Zone		Required Pre-Haul Maintenance		Stream Type Breaks
	Sale Boundary Tags		Optional Construction		Monumented Corners
	Leave Tree Tags		Gate (PCP1-1)		Existing Rock Pit
	Right of Way Boundary Tags				Leave Trees



# TIMBER SALE MAP

**SALE NAME:** UPPER SEVEN  
**AGREEMENT#:** 30-088693  
**TOWNSHIP(S):** T13R06W  
**TRUST(S):** State Forest Purchase(2), Common School and Indemnity(3), Agricultural School(4), University Repayment(41)

**REGION:** Pacific Cascade Region  
**COUNTY(S):** PACIFIC  
**ELEVATION RGE:** 817-1983



All State Trust Land unless otherwise noted.

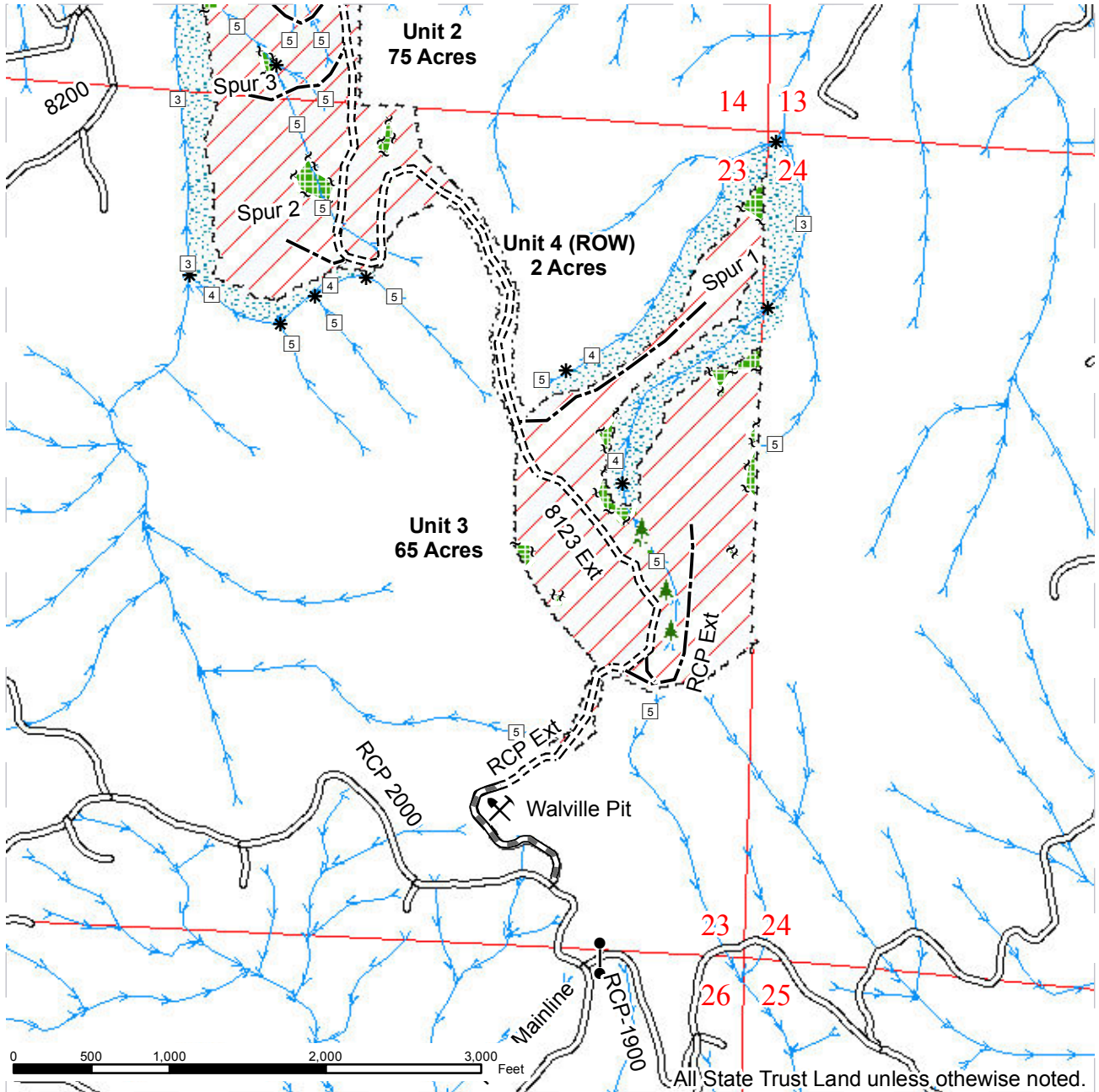
	Sale Area		Existing Road		Streams
	Leave Tree Area		Required Construction		Stream Types
	Riparian Mgt Zone		Required Pre-Haul Maintenance		Stream Type Breaks
	Sale Boundary Tags		Optional Construction		Monumented Corners
	Leave Tree Tags		Gate (PCP1-1)		Existing Rock Pit
	Right of Way Boundary Tags				Leave Trees



# TIMBER SALE MAP

**SALE NAME:** UPPER SEVEN  
**AGREEMENT#:** 30-088693  
**TOWNSHIP(S):** T13R06W  
**TRUST(S):** State Forest Purchase(2), Common School and Indemnity(3), Agricultural School(4), University Repayment(41)

**REGION:** Pacific Cascade Region  
**COUNTY(S):** PACIFIC  
**ELEVATION RGE:** 817-1983



	Sale Area		Existing Road		Streams
	Leave Tree Area		Required Construction		Stream Types
	Riparian Mgt Zone		Required Pre-Haul Maintenance		Stream Type Breaks
	Sale Boundary Tags		Optional Construction		Monumented Corners
	Leave Tree Tags		Gate (PCP1-1)		Existing Rock Pit
	Right of Way Boundary Tags				Leave Trees



# DRIVING MAP

**SALE NAME:** UPPER SEVEN  
**AGREEMENT#:** 30-088693  
**TOWNSHIP(S):** T13R06W  
**TRUST(S):** State Forest Purchase(2), Common School and Indemnity(3), Agricultural School(4), University Repayment(41)

**REGION:** Pacific Cascade Region  
**COUNTY(S):** PACIFIC  
**ELEVATION RGE:** 817-1983



<ul style="list-style-type: none"> <li> Timber Sale Units</li> <li> Highways</li> <li> Haul Route</li> <li> Other Route</li> <li> New Construction</li> <li> Mile Posts</li> <li> Distance Indicators</li> <li> Gate (PCP 1-1)</li> <li> Existing Rock Pit</li> </ul>	<p><b>DRIVING DIRECTIONS:</b>                  East of milepost 33 on SR 6 turn north on Stevens Road and continue 0.3 miles. Turn left (west) onto Elk Creek County Road for 3.3 miles. Continue straight (west) onto the 7000 Road for 1.5 miles. Continue straight (west) onto the 8000 road for 0.5 miles to 8100. Continue straight (west) for 1.8 miles to the 8000/8200.</p> <p>UNIT 1: From 8000/8200 Jct continue over bridge and take 8210 (first right) continue 0.2 miles to unit.</p> <p>UNIT 2: From 8000/8100 Jct continue south over bridge to gate. Continue through gate 0.5 miles to 8120. Turn right (west) onto the 8120 and continue 0.5 miles to 8123. Turn right (west) on 8123 and continue 0.5 miles to end of road. Follow orange centerline to unit.</p> <p>UNIT 3: From SR 6 between mile post 21 and 22 turn north onto the RCP mainline. Continue 5.0 miles on RCP mainline to Walville Quarry. Unit is north of the quarry.</p>
---	---



**TIMBER NOTICE OF SALE**

**SALE NAME:** *Sockeye Sorts*

**AGREEMENT NO:** *30-088620 - 30-088633*

**AUCTION:** *January 31, 2013*, starting at 10:00 a.m.,  
Pacific Cascade Region Office, *Castle Rock*, WA.

**COUNTY:** *Thurston*

**SALE LOCATION:** Sale located approximately *10* miles *southeast of Tenino*.

**PRODUCTS SOLD  
AND SALE AREA:**

All delivered timber, *except* leave trees tagged out with yellow Leave Tree Area boundary tags, leave trees marked with blue paint, downed timber greater than 36 inches in diameter, and pre-existing stumps, bounded by the following: Timber Sale Boundary tags, reprod, property lines, and the OLC-1400 road in Unit 1; Timber Sale Boundary tags, property lines, and the OLC-1400 road in Unit 2; Right Of Way boundary tags, meeting the specifications described below; on parts of Section 04, Township 15 North, Range 01 West, Section 33, Township 16 North, Range 01 West, W.M., containing *112* acres, more or less.

**MINIMUM BID AND ESTIMATED LOG SORT VOLUMES:**

Agreement #	Sort #	Species and Sort Specifications	Average Log Length	Estimated Volume			Minimum Bid Delivered Prices		Total Appraised Value	Bid Deposit
				mbf	Tons per mbf	Tons	\$/mbf	\$/Ton		
30-088620	1	DF 5"-7" Sawlogs dib		166	7.5	1,245		\$56.00	\$69,720.00	\$6,972.00
30-088621	2	DF 8"-11" Sawlogs dib	28	610	6.7		\$500.00		\$305,000.00	\$30,500.00
30-088622	3	DF 12"-19" Sawlogs dib	30	1,689	5.6		\$510.00		\$861,390.00	\$86,139.00
30-088623	4	DF 20"+ Sawlogs dib	28	1,574	4.7		\$475.00		\$747,650.00	\$74,765.00
30-088624	5	DF HQ 10"-19" dib	30	842	5.5		\$575.00		\$484,150.00	\$48,415.00
30-088625	6	DF HQ 20"+ dib	28	191	4.6		\$550.00		\$105,050.00	\$10,505.00
30-088626	7	WW 8"+ Sawlogs dib	28	69	7.0		\$400.00		\$27,600.00	\$2,760.00
30-088627	8	RC 5"+ Sawlogs dib	26	142	7.2		\$800.00		\$113,600.00	\$11,360.00
30-088628	9	RA 5"-7" Sawlogs dib		61	8.1	494		\$58.00	\$28,650.00	\$2,865.00
30-088629	10	RA 8"-11" Sawlogs dib	26	112	7.5		\$600.00		\$67,200.00	\$6,720.00
30-088630	11	RA 12"+ Sawlogs dib	24	56	6.7		\$630.00		\$35,280.00	\$3,528.00
30-088631	12	MA 8"+ Sawlogs dib	24	67	7.5		\$380.00		\$25,460.00	\$2,546.00
30-088632	13	Conifer Pulp 2"+ dib		200	9.0	1,800		\$24.00	\$43,200.00	\$4,320.00
30-088633	14	Hdwd Pulp 2"+ dib		83	9.0	747		\$23.00	\$17,180.00	\$1,718.00
		<b>TOTALS:</b>		<b>5,862</b>		<b>4,286</b>			<b>\$2,931,130.00</b>	

**CERTIFICATION:** This sale is certified under the Sustainable Forestry Initiative Standard (cert no: BV-SFIS-US09000572).

**BID METHOD:** Sealed Bids

**UNIT OF MEASURE:** MBF scale/Tonnage scale

**EXPIRATION DATE:** *August 31, 2013*

**ALLOCATION:** Export Restricted

## TIMBER NOTICE OF SALE

---

**PAYMENT  
SECURITY:**

To be determined by the State as described in Clause P-041 of the Purchaser's Contract.

**BIDDING  
PROCEDURES:**

A separate sealed bid and envelope must be submitted for each log sort. Prospective Purchasers may bid on any or all log sorts. On the day of sale the Purchaser must bring their bid deposit up to 10% of their total bid price. Complete bidding procedures and auction information may be obtained from the [Pacific Cascade](#) Region Office in [Castle Rock](#), WA. Phone number [\(360\) 577-2025](#).

**TIMBER EXCISE  
TAX:**

Purchaser must pay the forest excise taxes associated with the log sorts delivered to them. The tax rate for this sale is 4.2%. Taxable Stumpage = Total Delivered Value – (Harvest Cost + Estimated Haul Cost + ARRF). For more information contact the Department of Revenue, Forest Tax Section at 1-800-548-8849.

Use the following rates for estimating taxable stumpage: Harvest Cost = [\[Insert estimated harvest cost \\$/mbf or ton here\]](#) for sorts 2-8 and 10-12, and \$10.00 per ton for sorts 1 and 9, and \$8.00 per ton for sorts 13 and 14.

Hauling Services Payment Rate per Ton  
= (Base Rate + Mileage Rate) x (Contractor's hauling bid factor)

Base Rate = \$2.35 per ton

Mileage Rate = ((\$0.16 x C miles) + (\$0.11 x A miles)) x Fuel Index Factor

ARRF = \$22.25 per mbf for sorts 2-8 and 10-12. ARRF = \$2.97 per ton for sort 1.  
ARRF = \$2.75 per ton for sort 9. There will be no ARRF fees for sorts 13 and 14.

**CONFIRMATION:**

Each sort is subject to confirmation following auction. Sorts will not be confirmed until at least 10 days after auction. Final contract award is contingent upon the State's haul cost analysis. Actual haul route may vary and is subject to change at the State's discretion.

**SPECIAL REMARKS:**

The successful Purchaser(s) will be required to purchase logs from the sale area upon delivery to their location specified in the bid submitted. Logs will be delivered to the Purchaser's delivery location by the State's contract harvester. Purchaser is responsible for weighing and scaling costs. All tonnage loads will be weighed and all mbf loads will be scaled at State approved locations. The State reserves the right to determine where logs are authorized to be scaled and weighed.

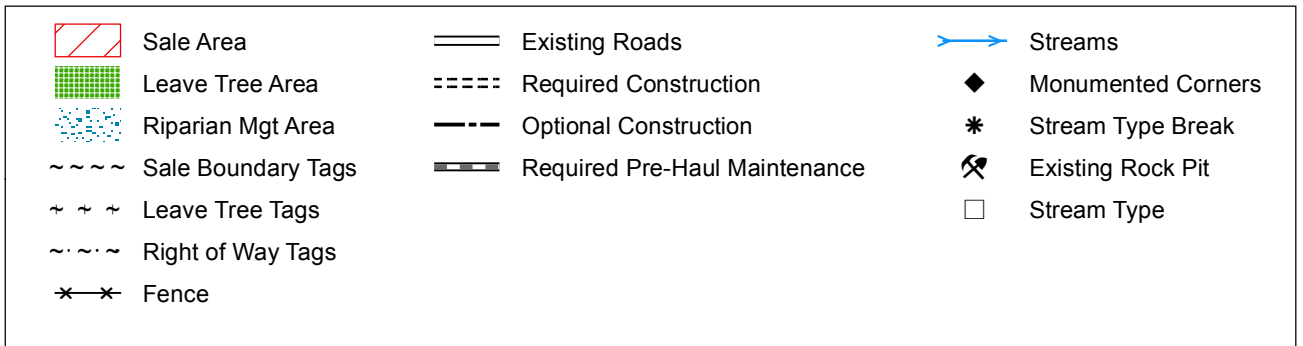
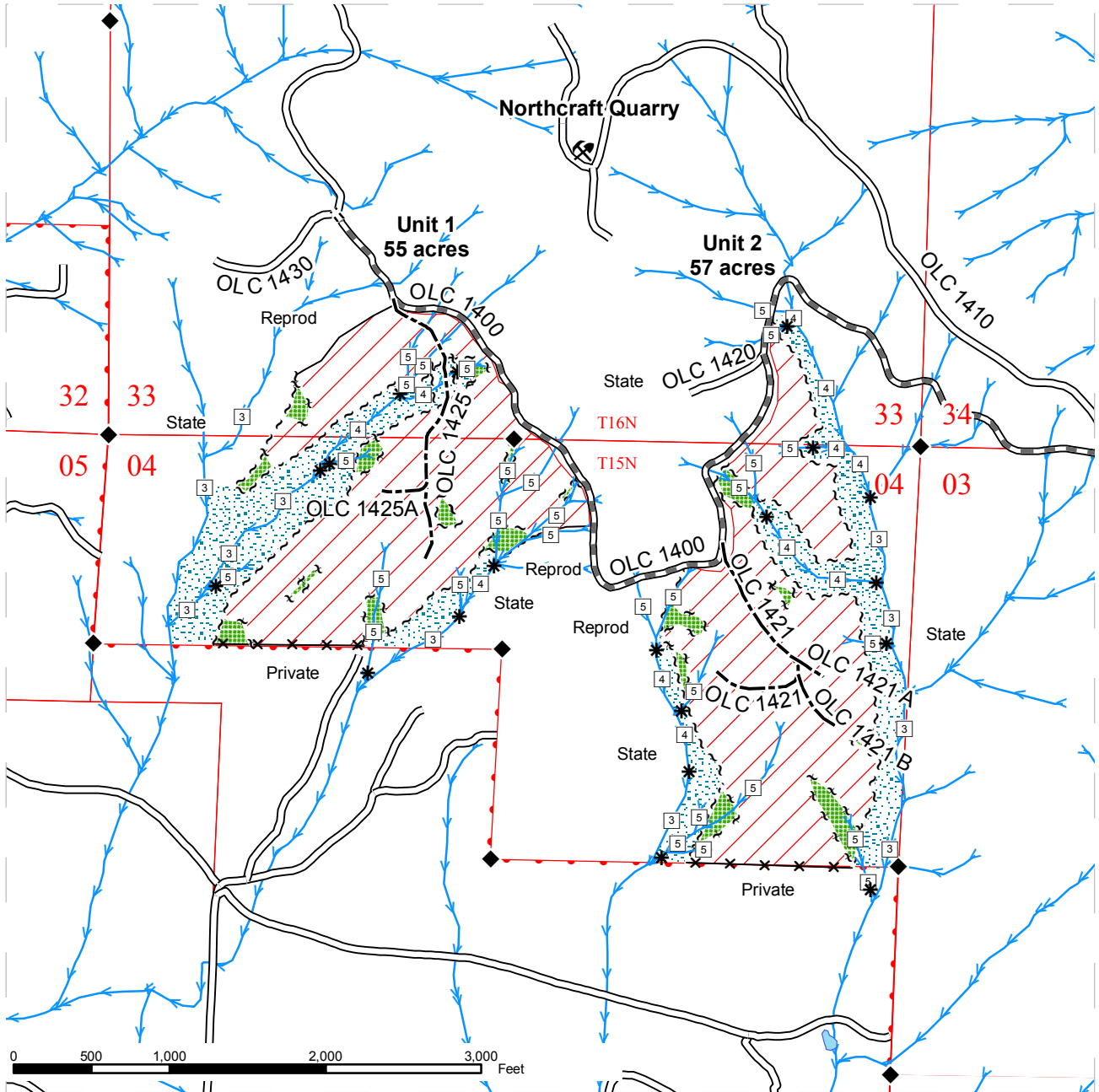
For more information regarding this log sort sale visit our web site:  
<http://www.dnr.wa.gov/BusinessPermits/Topics/AppraisalPackets/Pages/Home.aspx>. If you have questions call [Marcus Johns](#) at the [Pacific Cascade](#) Region office at [\(360\) 577-2025](#) or [Steve Teitzel](#) at the Forest Resources and Conservation Division Office in Olympia at [\(360\) 902-1741](#).



# TIMBER SALE MAP

**SALE NAME:** SOCKEYE SORTS  
**AGREEMENT#:** 30-088619  
**TOWNSHIP(S):** T15R01W, T16R01W  
**TRUST(S):** State Forest Transfer(1)

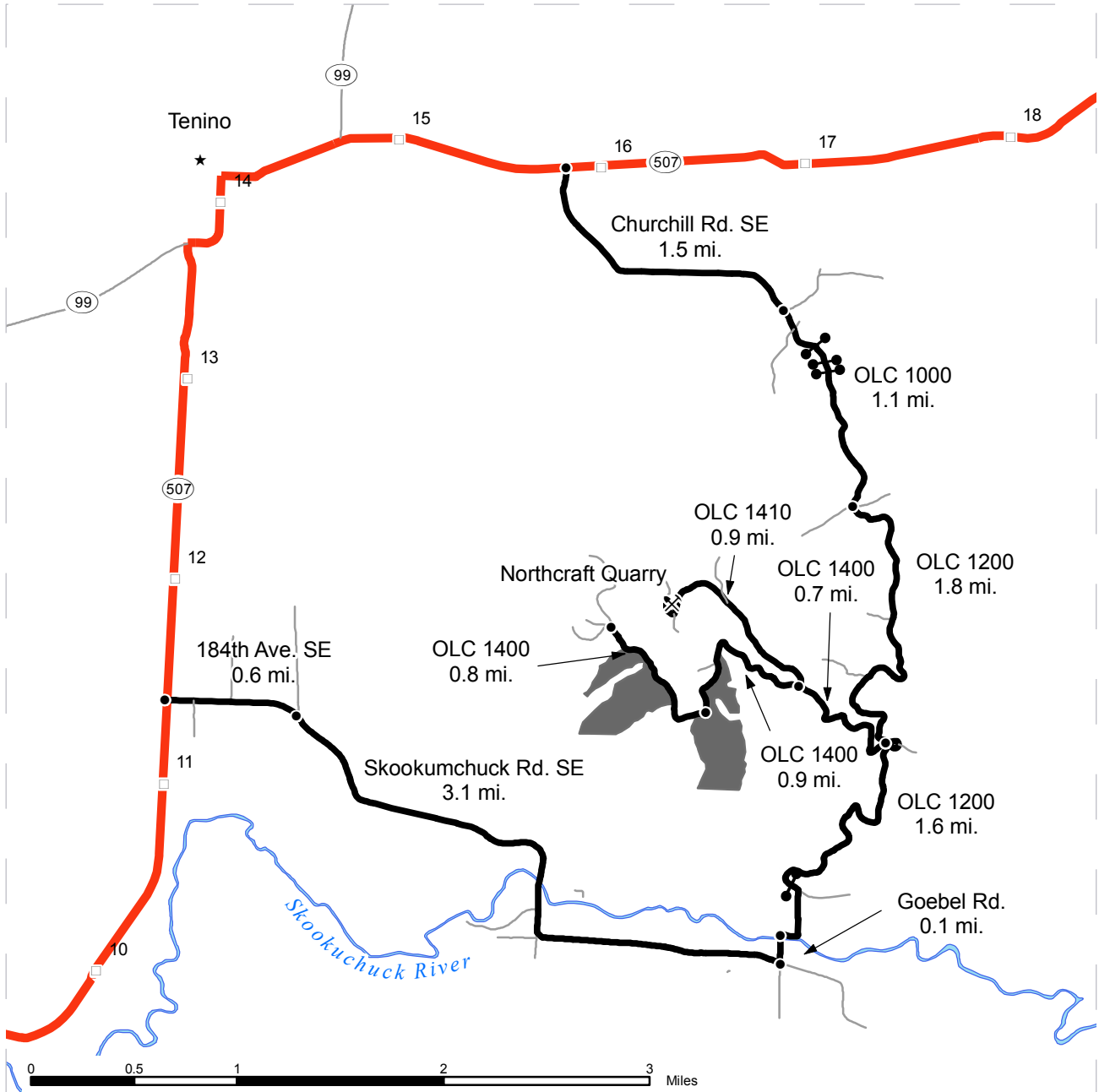
**REGION:** Pacific Cascade Region  
**COUNTY(S):** THURSTON  
**ELEVATION RGE:** 390-1008



# DRIVING MAP

**SALE NAME:** SOCKEYE SORTS  
**AGREEMENT#:** 30-088619  
**TOWNSHIP(S):** T15R01W, T16R01W  
**TRUST(S):** State Forest Transfer(1)

**REGION:** Pacific Cascade Region  
**COUNTY(S):** THURSTON  
**ELEVATION RGE:** 390-1008



	Timber Sale Unit
	Highways
	Haul Route
	Other Route
	Milepost Markers
	Existing Rock Pit
	Gate (PCP 1-1)
	Distance Indicator

**DRIVING DIRECTIONS:**

From Tenino drive 1.7 Miles east on SR 507 to Churchill Rd. SE on right. Drive Churchill Rd. SE for 1.5 Miles to the OLC 1000, a gravel road on right. Drive 1.1 Miles on OLC 1000 through 3 gates to the 4-way intersection; continue straight onto the OLC 1200. Drive 1.8 Miles on the OLC 1200 to the roundabout. Drive west from the roundabout on the OLC 1400 for 0.7 Miles to the intersection with the 1410. Go right on the OLC 1410 0.9 Miles from intersection to the quarry, or go left on the OLC 1400 0.9 Miles to Unit 2. Continue past Unit 2 0.8 Miles on the OLC 1400 to the truck turnaround.



**State of Washington**  
**Department of Natural Resources**  
**Peter Goldmark, Commissioner of Public Lands**

**SEALED BID FORM**

Sale Name \_\_\_\_\_ Agreement Number \_\_\_\_\_

\_\_\_\_\_ hereby submits the following bid for timber.  
(Print full, legal company name)

\_\_\_\_\_  
(Street address, City, State, Zip Code)

\_\_\_\_\_  
(Phone Number)

---

---

**Lump Sum Bid** (Not Including Fees)      \$ \_\_\_\_\_ **For Total Sale**

**Weight Scale Sale Bid** (Not Including Fees)      \$ \_\_\_\_\_ / **Ton**

**Scribner Scale Sale Bid** (Not Including Fees)      \$ \_\_\_\_\_ / **MBF**

---

---

**BID DEPOSIT**

**Bid Deposit Amount:** \$ \_\_\_\_\_

**Bid Deposit Type:**

- Cash, certified check, cashiers check, or money order  
 Per Sale Bid Bond  
 Statewide Bid Bond, Number \_\_\_\_\_

---

---

**Within 30 days of confirmation date** the successful bidder agrees to furnish Performance Security acceptable to the State in the amount specified on the Notice of Sale. Performance Security must guarantee performance of all provisions of the contract and payment of any damages caused by operations under the contract or resulting from the successful bidders noncompliance with any rule or law.

Bidder's Warranty and Bid Signature

*By signing and submitting this bid as an offer to purchase forest products from the State, the Bidder hereby warrants to the State that they have had an opportunity to fully inspect the sale area and the forest products being sold. Bidder further warrants to the State that they enter this bid based upon their own judgments of the value of the forest products, formed after their own examination and inspection of both the timber sale area and the forest products being sold. Bidder also warrants to the State that they enter this bid without any reliance upon the volume estimates, acreage, appraisals, pre-bid documentation, or any other representation by the Washington State Department of Natural Resources.*

\_\_\_\_\_ Date \_\_\_\_\_  
(Signature of Authorized Representative submitting this bid)

\_\_\_\_\_  
(Print name and title of Authorized Representative submitting this bid)

**Note: all sales are subject to confirmation by the Commissioner of Public Lands (Refer 79.15.120)**

## Instructions For Completing Sealed Bid Form

*All bids submitted for the purchase of forest products being sold by the Washington State Department of Natural Resources must have an original signature on behalf of the person or entity submitting the bid, and must be on the form provided in this booklet or a photocopy thereof. The DNR will not accept bids that are not signed, and will not accept bids that are not on the current, approved bid form. All appropriate blanks on bid form must be completed including the bid bond number if the bidder is relying upon a bid bond for bid deposit.*

*For more specific information, contact the appropriate region office.*

---

### In-Person Bids

- A. Sealed bids must be in auction box before 10:00 a.m. on the day of auction at the location specified in the Timber Notice of Sale.
- B. Sealed bids must be submitted in an envelope with the name of the sale, the bidder's name and the contract number clearly written on the outside of the envelope. The full legal name and business address of the bidder must be inserted where indicated on the form, and must be on the bid bond and timber sale contract. The bid form must be signed by an authorized representative. When a bidder has more than one person authorized to bid, documentation of those persons with signature authority for bidding must accompany the bid or be on file at the region office. Sealed bid envelopes are available at all region offices. One bid per envelope.
- C. Sealed bid envelopes **must** contain a completed bid form and a bid deposit.
- D. Sealed bid envelopes **may** contain a check for the Initial Deposit amount and a check for fees.

---

### Mailed Bids

- A. Bids that are mailed are required to have printed on the outside: "DO NOT OPEN UNTIL SALE DATE. SEALED BIDE NCLOSED". The sealed bid envelope(s) will be enclosed inside the mailed-in envelope. Mailed bids must be submitted in an envelope with the name of the sale, the bidder's name and the agreement number clearly written on the outside of the envelope. The full legal name and business address of the bidder must be inserted where indicated on the form, and must be the same on the bid bond and timber sale contract. The Sealed Bid Form must be signed by an authorized representative. When a bidder has more than one person authorized to bid, then documentation of those persons with signature authority for bidding must accompany the bid or be on file at the region office. Mail-in envelopes are available at all region offices. One bid per mailed-in envelope.
- B. Bids that are mailed will be accepted up to 4:30 p.m. the last business day before the auction by the region office in which the sale is located. Bidders assume the risk for the method of delivery. The DNR assumes no responsibility for any delays caused by any delivery service.
- C. Sealed bid envelopes **must** contain a completed bid form and a bid deposit.
- D. Sealed bid envelopes **may** contain a check for the Initial Deposit amount and a check for fees.

---

### Initial Deposit:

**Lump Sum Sales** - Initial Deposit must equal 10% of the total bid submitted.  
(25% if the bidder is a defaulter as defined under WAC 332-140-300)

**Weight Scale Sales** - Initial Deposit must equal 10% of the bid per ton multiplied by the total sale estimated tonnage. (25% if the bidder is a defaulter as defined under WAC 332-140-300)

**Scribner MBF Scale Sales** - Initial Deposit must equal 10% of the bid per MBF multiplied by the total sale MBF. (25% if the bidder is a defaulter as defined under WAC 332-140-300)

**State of Washington**  
**Department of Natural resources**  
**Peter Goldmark, Commissioner of Public Lands**

**STATEWIDE BID BOND**

Bond Number \_\_\_\_\_

\_\_\_\_\_ of \_\_\_\_\_,  
(Principal's Name) (City, State)

hereinafter called PRINCIPAL, and \_\_\_\_\_ hereinafter called  
SURETY,

a corporation organized under the laws of the State of \_\_\_\_\_, and authorized to transact surety business in the State of Washington, as SURETY, are held and firmly bound jointly and severally to the State of Washington, Department of Natural Resources, hereinafter called the STATE, in the sum of \$150,000.00 Dollars, lawful money of the United States of America. The PRINCIPAL binds itself, its heirs, executors, administrators, successors, and assigns, and the SURETY binds itself, its successors, and assigns, all jointly and severally.

This bond shall be governed by the laws of the State of Washington. In the event of a lawsuit involving this bond, a venue shall be proper only in Thurston County Superior Court.

Signed, sealed and dated this \_\_\_\_\_ day of \_\_\_\_\_, \_\_\_\_\_.  
(month) (year)

This statewide bid bond may be used for bidding between the following dates:

Starting:

Ending:

**It Is Hereby Understood and Agreed:**

If PRINCIPAL is an apparent high bidder, PRINCIPAL shall before 4:30 p.m ., on day of sale, pay to the STATE the amount of the initial deposit in the form of a certified check, cashier's check, bank draft, cash or money order, then this agreement shall be void for the sale on which the payment is made; otherwise, it will remain in force.

SURETY will make payment to the STATE within ten days after demand by the STATE if the PRINCIPAL shall fail to make timely payment as described above.

The SURETY may cancel this bond by sending a written notice to the STATE, not less than forty-five days before a cancellation date; liability shall terminate as to acts or omissions of the PRINCIPAL that occur after the cancellation date.

The PRINCIPAL and the SURETY executed this bond on the date first mentioned.

**Principal:** (Above named)

Signature: \_\_\_\_\_

Name: \_\_\_\_\_

Title: \_\_\_\_\_

Address: \_\_\_\_\_

City: \_\_\_\_\_  
State & Zip Code

**Surety:** (Above named)

Signature: \_\_\_\_\_

Name: \_\_\_\_\_

Title: \_\_\_\_\_

Address: \_\_\_\_\_

City: \_\_\_\_\_  
State & Zip Code

**Surety:** (Local Office of Authorized agent)

Signature: \_\_\_\_\_

Name: \_\_\_\_\_

Title: \_\_\_\_\_

Address: \_\_\_\_\_

City: \_\_\_\_\_  
State & Zip Code

Notary or Company Seal in Space Above

## **Instructions for Completing Timber Sale Statewide Bid Bond**

- A. This form is authorized for use as bid guaranty to qualify for bidding on Washington State Department of Natural Resources timber sales.
- B. The Statewide Bid Bond may be used as bid guaranty on more than one timber sale.
- C. The full legal name and business address of the PRINCIPAL must be inserted where indicated and must be the same as will appear on the bidding record and timber sale contract. The bond must be signed by an authorized person. Additionally, the name must be typed or printed below the signature and title must be shown.
- D. The full legal name and business address of the SURETY must be inserted where indicated. The bond must be signed by an authorized person. Additionally, the name must be typed or printed below the signature and the title must be shown.
- E. If the SURETY does not have a Washington State office or resident agent, but is authorized to transact surety business in the State of Washington as SURETY, it may leave this signature block blank.
- F. This form must be received by the Department of Natural Resources, Forest Resources and Conservation Division, PO BOX 47016, Olympia, Washington, 98504-7016, ten days in advance of the auction.
- G. **The State reserves the right to reject *incomplete or incorrect* bid bond forms, making such forms unacceptable as bid guaranty.**





**State of Washington  
 Department of Natural Resources  
 Peter Goldmark, Commissioner of Public Lands**

**Timber Sale Per Sale Bid Bond**

Bond Number \_\_\_\_\_

\_\_\_\_\_ of \_\_\_\_\_, hereinafter called PRINCIPAL, and \_\_\_\_\_, hereinafter called SURETY, a corporation organized under the laws of the State of \_\_\_\_\_ and authorized to transact surety business in the State of Washington, as SURETY, are held and firmly bound jointly and severally to the State of Washington, Department of Natural Resources, hereinafter called the STATE, in the sum of \$\_\_\_\_\_ Dollars, lawful money of the United States of America. The PRINCIPAL binds itself, its heirs, executors, administrators, successors, and assigns, and the SURETY binds itself, its successors, and assigns, all jointly and severally.

This bond shall be governed by the laws of the State of Washington. In the event of a lawsuit involving this bond, venue shall be proper only in Thurston County Superior Court.

Signed, sealed, and dated this \_\_\_\_\_ day of \_\_\_\_\_, 20 \_\_\_\_\_.

**BID IDENTIFICATION:**

SALES NAME(S)	REQUIRED DEPOSIT	AGREEMENT NUMBER(S)

**DATE OF BID:** \_\_\_\_\_

**It Is Hereby Understood and Agreed:**

If PRINCIPAL is the high bidder on the sale(s) identified above and, within ten (10) days of the day of sale, transmits cash, certified check, cashier's check, bank draft or money order, payable to the STATE, in the amount of the bid guaranty required by the terms of the Notice of Sale, then this obligation shall be void; otherwise, it shall remain in force.

SURETY will make payment to the STATE within ten (10) days after demand by the STATE whenever the PRINCIPAL shall fail to make timely payment as described above.

IN WITNESS WHEREOF: the PRINCIPAL and the SURETY have caused this bond to be executed on the date first mentioned.

**SECOND OFFICER:**

Signature: \_\_\_\_\_

Name: \_\_\_\_\_

Title: \_\_\_\_\_

**PRINCIPAL:** (Above Named)

Signature: \_\_\_\_\_

Name: \_\_\_\_\_

Title: \_\_\_\_\_

**SURETY:** (Local Office of Authorized Agent)

Signature: \_\_\_\_\_

Name: \_\_\_\_\_

Title: \_\_\_\_\_

Address: \_\_\_\_\_

City: \_\_\_\_\_

State & Zip: \_\_\_\_\_

**SURETY:** (Above Named)

Signature: \_\_\_\_\_

Name: \_\_\_\_\_

Title: \_\_\_\_\_

Address: \_\_\_\_\_

City: \_\_\_\_\_

State & Zip \_\_\_\_\_

**NOTARY OR COMPANY SEAL IN THE SPACE ABOVE**

## **Instructions for Completing Timber Sale PerSale (s) Bid Bond**

- A. This form is authorized for use as bid guaranty to qualify for bidding on Washington State Department of Natural Resources timber sales.
- B. The Timber Sale Per Sale Bid Bond may be used as bid guaranty on more than one timber sale auction held the same date at the same location.
- C. The full legal name and business address of the PRINCIPAL must be the same as will appear on the bidding record and timber sale contract. The bond must be signed by an authorized person, the name typed or printed, and title shown. If PRINCIPAL is a corporation, a second officer must sign in the space to the left of the signature of the officer executing for the PRINCIPAL.
- D. The full legal name and business address of the SURETY must be inserted where indicated. The bond must be signed by an authorized person. Additionally, the name must be typed or printed below the signature and the title must be shown. If this person is not an officer of the corporation, evidence of authority must be submitted.
- E. If the SURETY does not have a Washington State office or resident agent, but is authorized to transact surety business in the State of Washington as Surety, it may leave the local office signature block blank.
- F. The date of the bid bond must not be later than the auction date.
- G. **The State reserves the right to reject incomplete or *incorrect* bid bond forms, making such forms unacceptable as guaranty.**



STATE OF WASHINGTON  
DEPARTMENT OF NATURAL RESOURCES  
**Peter Goldmark, Commissioner of Public Lands**

**LOG SORT SEALED BID FORM**

Sale Name \_\_\_\_\_ Agreement Number \_\_\_\_\_ Date \_\_\_\_\_

\_\_\_\_\_ hereby submits the following bid for delivered logs.  
(Print Company Name)

\_\_\_\_\_ Telephone Number \_\_\_\_\_  
(Print Name Authorized Company Representative) (Contact for bid result notification)

\_\_\_\_\_  
(Street Address)

\_\_\_\_\_  
(City, State and Zip)

Agreement Number	Sort Number	<u>Delivered Logs Bid Amount</u> (fill in one only)	
		\$ / MBF	\$ / ton

**Bid Deposit Amount** \$ \_\_\_\_\_

- Bid Deposit Type:**
- Cash, Certified Check, Cashiers Check, or Money Order
  - Per Sale Bid Bond
  - Statewide Bid Bond, Number \_\_\_\_\_

The successful bidder agrees to furnish payment security acceptable to the State in the amount as described in clause P-041 of the Purchaser's contract prior to log delivery and at a date to be determined by the State.

**Bidder's Warranty and Bid Signature**

*By signing and submitting this bid as offer to purchase forest products from the State, the Bidder hereby warrants to the State that they have had an opportunity to fully inspect the sale area and the forest products being sold. Bidder further warrants to the State that they enter this bid based solely upon their own judgment of the value of the forest products, formed after their own examination and inspection of both the timber sale area and the forest products being sold. Bidder also warrants to the State that they enter this bid without any reliance upon the volume estimates, acreage estimates, appraisals, pre-bid documentation, or any other representation by the State Department of Natural Resources.*

\_\_\_\_\_  
(Signature of Authorized Representative submitting this bid)

\_\_\_\_\_  
(Date of Signature)

\_\_\_\_\_  
(Print name and title of Authorized Representative submitting this bid)

**NOTES:** A separate bid form is required for each log sort bid and must be delivered in a separate envelope. Photocopies of this bid form may be used. Each photocopy must have original signatures. Final contract award is contingent upon the State's haul cost analysis. Actual haul route may vary and is subject to change at the State's discretion. All sales are subject to confirmation by the Commissioner of Public Lands as per RCW 79.15.100.

# LOG SORT SEALED BID SUPPLEMENTAL INFORMATION FORM

\_\_\_\_\_  
(Print Company Name)

\_\_\_\_\_  
(Sale Name)

\_\_\_\_\_  
(Agreement Number)

\_\_\_\_\_  
(Sort Number)

\_\_\_\_\_  
(email: optional for DNR production report distribution)

## **Log Manufacturing Specifications:**

**Sawlog sorts:** Enter two or more preferred log lengths for each log length range below

**Peeler sorts:** Enter one or more preferred log length for each log length range below

**Ponderosa pine sorts:** Enter one or more preferred log length for each log length range below

**Pole sorts (Distribution):** Enter three or more lengths. Attach preferred manufacturing information.

**Pole sorts (Transmission):** Enter six or more lengths. Attach preferred manufacturing information.

**Tonnage sorts:** See bid form instructions for required log lengths. Enter additional custom lengths as desired.

<b>Log Length Ranges</b>	<b>Bidder's Preferred Log Lengths</b> (Log lengths exclude trim)
<b>12 ft. through 20 ft.</b>	
<b>22 ft. through 30 ft.</b>	
<b>32 ft. through 40 ft.</b>	
<b>Distribution Poles – 35 ft. through 55 ft.</b>	
<b>Transmission Poles – 60 ft.+</b>	

## **Additional Log or Pole Length Information:**

To provide additional preferred cutting information you may attach a separate sheet or "Cutting card".

## **Log Delivery Information:**

1) Designate the point of delivery and address (must be a street address)

\_\_\_\_\_  
(Location Name)

\_\_\_\_\_  
(Street Address)

\_\_\_\_\_  
(City, State and Zip)

2) Designate the state approved Scaling and Weighing facilities closest to the point of delivery as needed.

### **Scaling Location Information**

\_\_\_\_\_  
(Scaling Location Name)

\_\_\_\_\_  
(Third Party Scaling Organization)

\_\_\_\_\_  
(Scaling Location Street Address)

\_\_\_\_\_  
(Scaling Location City, State and Zip)

### **Weighing Location Information**

\_\_\_\_\_  
(Weighing Location Name)

\_\_\_\_\_  
(Weighing Location Owner)

\_\_\_\_\_  
(Weighing Location Street Address)

\_\_\_\_\_  
(Weighing Location City, State and Zip)

**Final contract award is contingent upon the State's haul cost analysis. Actual haul route may vary and is subject to change at the State's discretion. Additional terms or conditions requested by the bidder on or attached to the Log Sort Sealed Bid or Supplemental Information Forms are informational only and non-binding.**

## **Instructions for Completing the Log Sort Sealed Bid and Supplemental Information Forms.**

All bids submitted for the purchase of forest products being sold by the Washington State Department of Natural Resources must have an original signature on behalf of the person or entity submitting the bid, and must be on the form(s) provided in this booklet or a photocopy thereof. The DNR will not accept bids that are not signed, and will not accept bids that are not on the current, approved bid form. All appropriate blanks including Agreement Number, Sort Number, Bid amount (per mbf or ton as appropriate for the sort), Bid deposit amount and type. Signatures and date on bid form must be completed including the bid bond number if bidder is relying upon a bid bond for bid deposit.

Bids may not be accepted if a completed '**Log Sort Sealed Bid Supplemental Information Form**' is not included with the approved '**Log Sort Sealed Bid Form**'.

**Required log lengths for tonnage sorts:** Preferred log lengths for tonnage sawlog sorts shall include the following plus any additional lengths identified on the Bid Supplemental Information form:

<b>Species Type</b>	<b>Preferred Lengths</b>
Conifer Sorts	16', 20', 24', 26', 32', 40'
Hardwood Sorts	18', 20', 26', 28', 30', 36', 38', 40'

For more specific information, contact the appropriate region office.

### **In-Person Bids**

- A. Sealed bids must be in auction box or auction envelope before 10:00 a.m. on the day of sale at the location specified in the notice of sale.
- B. Sealed bids must be submitted in an envelope with the name of the sale, the bidder's name and the contract agreement number clearly written on the outside of the envelope. The full legal name and business address of the bidder must be inserted where indicated on the form, and must be the same as the name on the bid bond and timber sale contract. The bid form must be signed by an authorized person. When a bidder has more than one person authorized to bid, then documentation of those persons with signature authority for bidding must accompany the bid or be on file at the region office. Sealed bid envelopes are available at all region offices. One bid per envelope, please.
- C. Sealed bid envelopes must contain the following:
  1. A completed Log Sort Sealed Bid form;
  2. A completed Supplemental Information form; and
  3. A bid deposit

### **Mailed Bids**

- A. Mail-in bid envelopes are required to have printed on the outside: "DO NOT OPEN UNTIL SALE DATE. SEALED BID ENCLOSED." The sealed bid envelope(s) will be enclosed inside the mailed-in envelope. Mailed bids must be submitted in an envelope with the name of the sale, the bidder's name and the agreement number clearly written on the outside of the envelope. The full legal name and business address of the bidder must be inserted where indicated on the form, and must be the same on the bid bond and timber sale contract. The bid form must be signed by an authorized person. When a bidder has more than one person authorized to bid, then documentation of those persons with signature authority for bidding must accompany the bid or be on file at the region office. Mail-in envelopes are available at all region offices. One bid per mailed-in envelope, please.
- B. Mail-in or otherwise delivered bids will be accepted up to 4:30 p.m. the last business day before the auction by the region office in which the sale is located. Bidders assume the risk for the method of delivery they chose. The DNR assumes no responsibility for any delays caused by any delivery service.
- C. Sealed bid envelopes must contain the following:
  1. A completed '**Log Sort Sealed Bid Form**';
  2. A completed '**Log Sort Sealed Bid Supplemental Information Form**' and;
  3. A bid deposit





# Department of Natural Resources Region Offices

## Olympia Headquarters

1111 Washington St. SE  
MS 47000  
Olympia, WA 98504-7000  
(360) 902-1000  
www.dnr.wa.gov

## Forest Resources & Conservation

1111 Washington St. S.E.  
MS 47016  
Olympia, WA 98504-7016  
(360) 902-1340  
www.dnr.wa.gov

## South Puget Sound Region

950 Farman Ave. N.  
Enumclaw, WA 98022-9282  
(360) 825-1631

## Pacific Cascade Region

601 Bond Road  
PO Box 280  
Castle Rock, WA 98611-0280  
(360) 577-2025

## Southeast Region

713 Bowers Road  
Ellensburg, WA 98926-9301  
(509) 925-8510

## Northwest Region

919 N. Township St.  
Sedro Woolley,  
WA 98284-9384  
(360) 856-3500

## Olympic Region





411 Tillicum Lane  
Forks, WA 98331-9271  
(360) 374-2800

## Northeast Region

225 S. Silke Road  
PO Box 190  
Colville, WA 99114-0190  
(509) 684-7474



## DNR REGIONS

-  DNR Region Boundaries
-  County Boundaries
-  DNR Region Office
-  Olympia Headquarters



WASHINGTON STATE DEPARTMENT OF  
**Natural Resources**



For more information about how public lands are managed visit DNR's web page at [www.dnr.wa.gov](http://www.dnr.wa.gov)

Fire, Burn Ban Information and Region Offices  
Toll Free: 1-800-527-3305 General TTY: 7-1-1



PRINTED ON RECYCLED PAPER. DNR COMMUNICATIONS, DECEMBER 2009.



WASHINGTON STATE DEPARTMENT OF  
**Natural Resources**

1111 WASHINGTON ST SE  
MS 47016  
OLYMPIA WA 98504-7016

[www.dnr.wa.gov](http://www.dnr.wa.gov)

For alternate formats  
of this document,  
Call (360) 902-1000  
TRS: 7-1-1

PRINTED IN THE USA ON RECYCLED PAPER

