

Washington Dept. of Natural Resources

Mill log prices - Domestically Processed

Price Per 5/31/2017

Coast Marketing Area

Species - Grade	\$/MBF			Number of Quotes
	Average	High	Low	
<b>Doug-Fir</b>	<b>\$587</b>	<b>\$900</b>	<b>\$234</b>	●
Pole **	\$900	\$900	\$900	●
SM and Better	\$654	\$707	\$600	●
2 Saw	\$633	\$660	\$530	●
3 Saw	\$612	\$660	\$460	●
4 Saw/CNS	\$553	\$600	\$460	●
Util*	\$239	\$243	\$234	●
<b>White wood</b>	<b>\$459</b>	<b>\$555</b>	<b>\$234</b>	●
SM and Better	\$525	\$525	\$525	●
2 Saw	\$509	\$555	\$400	●
3 Saw	\$504	\$555	\$325	●
4 Saw/CNS	\$417	\$500	\$325	●
Util*	\$239	\$243	\$234	●
<b>Spruce</b>	<b>\$420</b>	<b>\$510</b>	<b>\$250</b>	●
2 Saw	\$380	\$510	\$250	●
3 Saw	\$510	\$510	\$510	●
4 Saw/CNS	\$410	\$410	\$410	●
<b>Cedar</b>	<b>\$1,075</b>	<b>\$1,500</b>	<b>\$650</b>	●
Camprun	\$1,075	\$1,500	\$650	●
<b>Alder</b>	<b>\$644</b>	<b>\$847</b>	<b>\$234</b>	●
2 Saw	\$812	\$847	\$775	●
3 Saw	\$776	\$816	\$725	●
4 Saw	\$606	\$773	\$375	●
Util*	\$279	\$324	\$234	●
<b>Maple</b>	<b>\$412</b>	<b>\$505</b>	<b>\$234</b>	●
2 Saw	\$490	\$505	\$475	●
3 Saw	\$455	\$489	\$425	●
4 Saw	\$403	\$450	\$375	●
Util*	\$261	\$288	\$234	●
<b>Cotton Wood</b>	<b>\$204</b>	<b>\$204</b>	<b>\$204</b>	●
Camprun	\$204	\$204	\$204	●
<b>Grand Total</b>	<b>\$535</b>	<b>\$1,500</b>	<b>\$204</b>	<b>88</b>

- 1-2 quotes ●
- 3-4 quotes ●
- 5 or more quotes ●

\* Utility prices are converted to mbf using 9 tons per mbf.

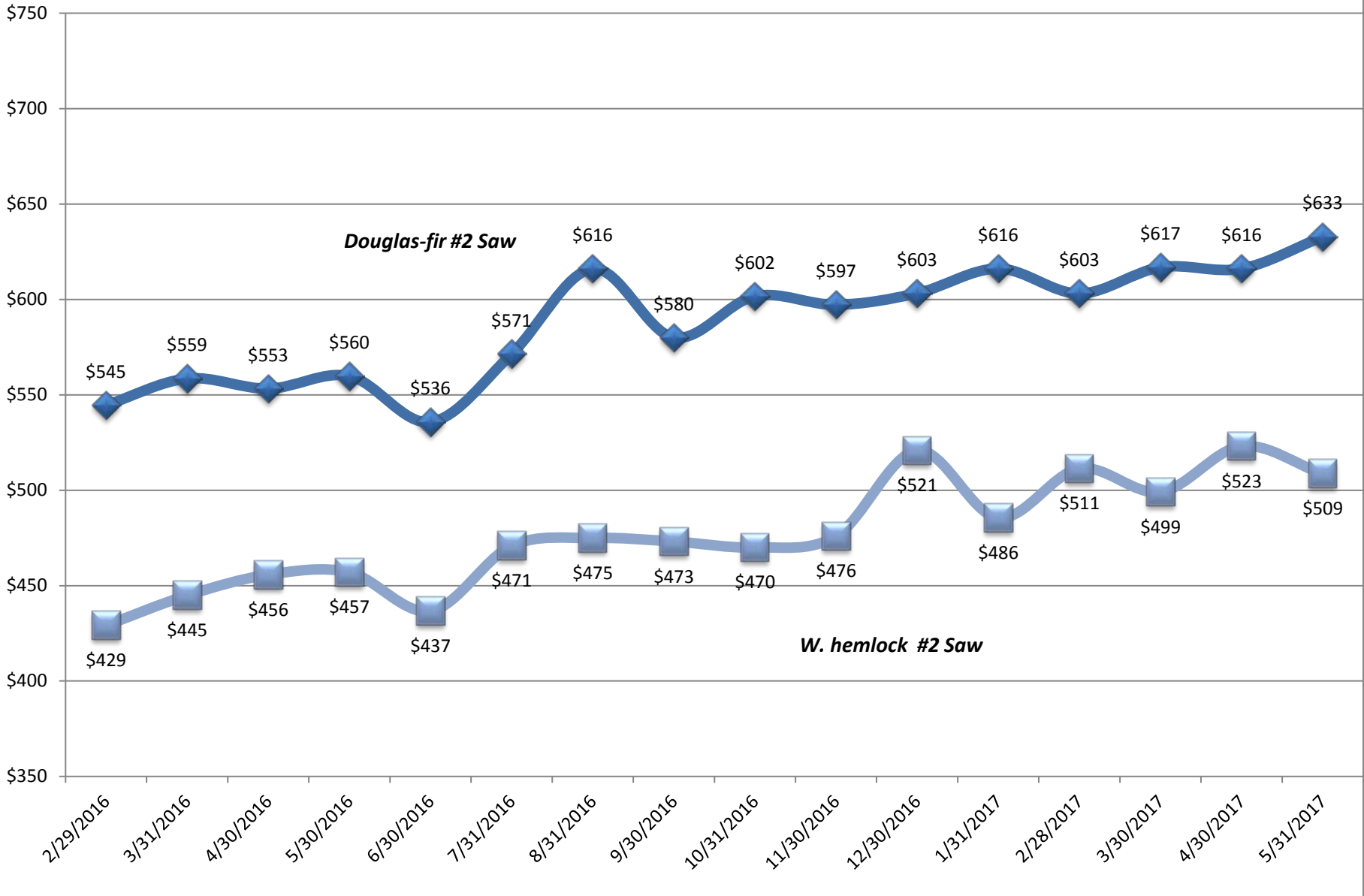
\*\* Utility poles 40 ft and longer

Publish date: June 1, 2017

Care was used during compilation of this timber price sheet to ensure accuracy. However, DNR relied in part on information from outside sources and cannot accept responsibility for errors or omissions. Any use of this information is as is, with all faults, and without any warranty of its accuracy. DNR DISCLAIMS ALL WARRANTIES, EXPRESS OR IMPLIED, INCLUDING BUT NOT LIMITED TO IMPLIED WARRANTIES OF MERCHANTABILITY AND FITNESS FOR PARTICULAR PURPOSES.

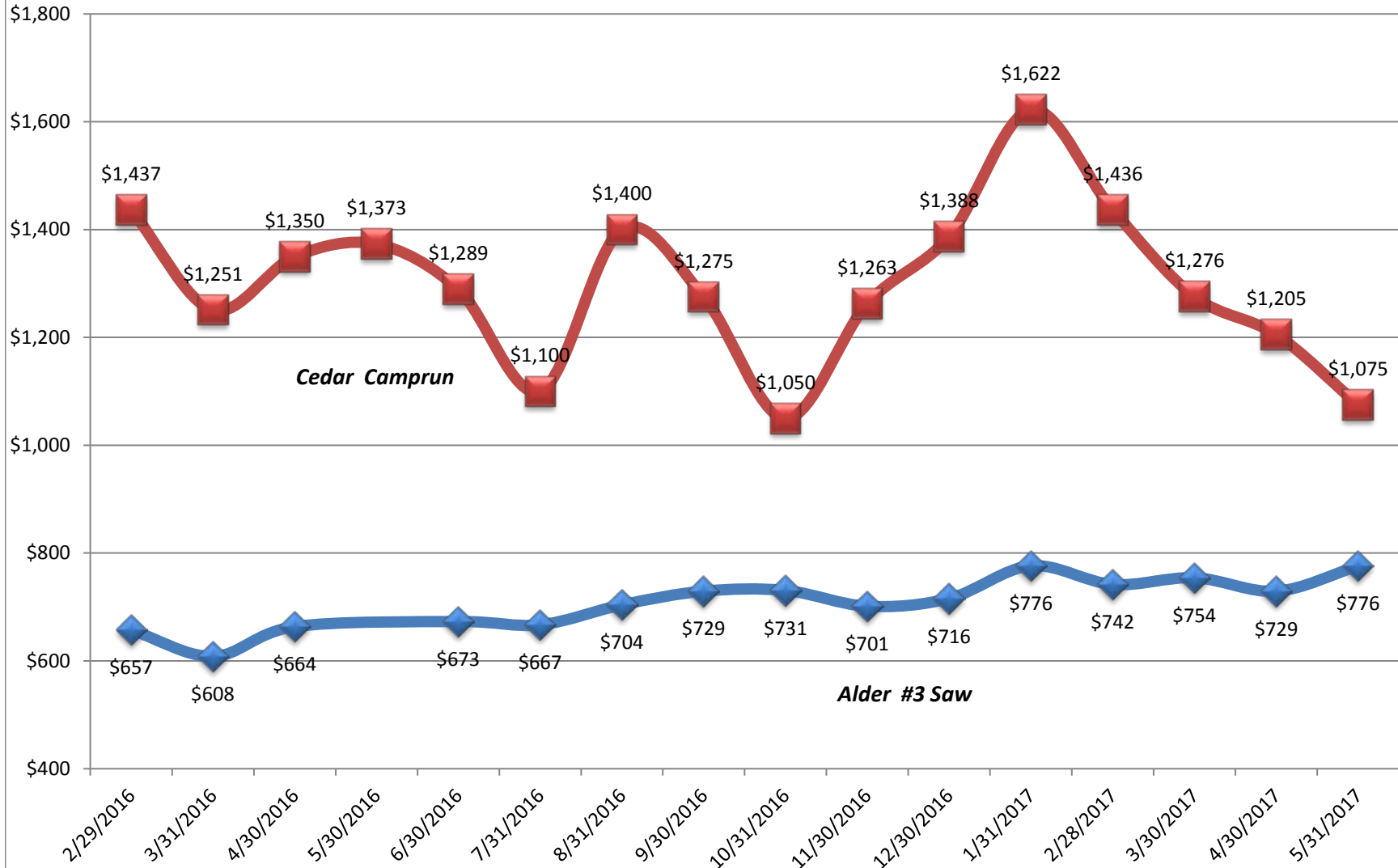
**\$/MBF Coast - Delivered Log Prices**

Care was used during compilation of this timber price sheet to ensure accuracy. However, DNR relied in part on information from outside sources and cannot accept responsibility for errors or omissions. Any use of this information is as is, with all faults, and without any warranty of its accuracy. DNR DISCLAIMS ALL WARRANTIES, EXPRESS OR IMPLIED, INCLUDING BUT NOT LIMITED TO IMPLIED WARRANTIES OF MERCHANTABILITY AND FITNESS FOR PARTICULAR PURPOSES.



Care was used during compilation of this timber price sheet to ensure accuracy. However, DNR relied in part on information from outside sources and cannot accept responsibility for errors or omissions. Any use of this information is as is, with all faults, and without any warranty of its accuracy. DNR DISCLAIMS ALL WARRANTIES, EXPRESS OR IMPLIED, INCLUDING BUT NOT LIMITED TO IMPLIED WARRANTIES OF MERCHANTABILITY AND FITNESS FOR PARTICULAR PURPOSES.

## \$/MBF Coast - Delivered Log Prices



Washington Dept. of Natural Resources

Mill log prices - Domestically Processed

Price Period May-17  
Marketing Region EASTSIDE

Species - Sort	\$/MBF			Number of Quotes
	Average	High	Low	
<b>Doug-Fir/Larch</b>	<b>\$395</b>	<b>\$430</b>	<b>\$333</b>	●
Camprun	\$414	\$430	\$400	●
CNS	\$344	\$350	\$333	●
<b>White fir/hem</b>	<b>\$365</b>	<b>\$420</b>	<b>\$310</b>	●
Camprun	\$383	\$420	\$310	●
CNS	\$323	\$333	\$310	●
<b>Cedar</b>	<b>\$881</b>	<b>\$1,500</b>	<b>\$400</b>	●
Camprun	\$950	\$1,500	\$600	●
CNS	\$813	\$1,300	\$400	●
<b>Lodgepole</b>	<b>\$366</b>	<b>\$410</b>	<b>\$310</b>	●
Camprun	\$376	\$410	\$310	●
CNS	\$336	\$350	\$325	●
<b>White pine</b>	<b>\$297</b>	<b>\$425</b>	<b>\$200</b>	●
Camprun	\$296	\$425	\$200	●
CNS	\$298	\$400	\$245	●
<b>Pine</b>	<b>\$306</b>	<b>\$350</b>	<b>\$275</b>	●
Small saw	\$304	\$350	\$275	●
Large saw	\$310	\$320	\$300	●
<b>E Spruce</b>	<b>\$374</b>	<b>\$410</b>	<b>\$325</b>	●
Camprun	\$388	\$410	\$360	●
CNS	\$329	\$333	\$325	●
<b>Conifer</b>	<b>\$274</b>	<b>\$374</b>	<b>\$198</b>	●
CNS	\$341	\$374	\$324	●
Utility	\$208	\$213	\$198	●
<b>Grand Total</b>	<b>\$405</b>	<b>\$1,500</b>	<b>\$198</b>	<b>72</b>

- 5 or more quotes
- 3 to 4 quotes
- 1 to 2 quotes

Publish date: June 1, 2017

Note: Utility/pulp conversion factor used 8.5 Tons/mbf

Care was used during compilation of this timber price sheet to ensure accuracy. However, DNR relied in part on information from outside sources and cannot accept responsibility for errors or omissions. Any use of this information is as is, with all faults, and without any warranty of its accuracy. DNR DISCLAIMS ALL WARRANTIES, EXPRESS OR IMPLIED, INCLUDING BUT NOT LIMITED TO IMPLIED WARRANTIES OF MERCHANTABILITY AND FITNESS FOR PARTICULAR PURPOSES.

# Eastside

## Camprun Delivered Log Prices

