



Public Auction Sale of Timber

August 2023

Book 1050



IMPORTANT NOTICES

Natural Resources (DNR)

Governmental Regulatory Actions or Orders

The purchaser assumes the risk of liabilities related to regulatory actions or orders by any government agency that may affect the operability of these timber sales. Such regulatory actions or orders include, but are not limited to, actions taken pursuant to the State Forest Practices Act, Chapter 76.09 RCW, and the Federal Endangered Species Act, 16 U.S.C. §§ 1531-1544. Please see timber sale contract clauses G-066 and G-220 for further information.

Threatened and Endangered Species

DNR cannot verify the presence or absence of any threatened or endangered species that may affect the operability of the timber sale. Purchasers must rely on their own assessments.

Export Restricted

All timber purchased under these state DNR contracts shall not be exported outside of the United States until the timber has been processed. Purchasers shall not violate any of the prohibitions in WAC 240-15-015 (relating to the prohibitions on export and substitution), WAC 240-15-025 (relating to reporting requirements), and WAC 240-15-030 (relating to enforcement). If purchasers knowingly violate WAC 240-15-015, purchasers shall be barred from bidding on or purchasing export restricted timber as provided.

Cover photos

Timber Sales in this book are from state trust lands, managed to help build K-12 public schools, state universities, colleges, prisons, mental hospitals, the state Capitol; and to support local services in many counties.

Top right: Landscape view of DNR-managed trust lands in western Washington. Photo courtesy of DNR staff.

Second down right: Timber harvest operations on DNR-managed trust land. Photo courtesy of DNR staff.

Third down right: Log truck loaded with timber harvested from DNR-managed trust land. Photo courtesy of DNR staff.

Bottom right: Marcus Whitman Elementary School in Richland Washington. Photo courtesy of Richland School District.

Bottom middle: Storytime at the Shelton Timberland Library. Photo courtesy of Timberland Regional Library.

Bottom left: Douglas-fir seedlings growing at the Webster Nursery. Many of these seedlings will be planted following timber harvest on DNR-managed trust lands. Photo courtesy of DNR staff.

Table of Contents

Certification Opportunities for DNR Timber Purchasers	Page 3
Bidder/Purchaser Auction and Bidding Information	Page 5
Summary of All Sales Being Offered in August	Page 9
Upper Salmon Creek	Page 11
Deans Delight Sorts	Page 17
Little Wrangler	Page 23
Extra Christie	Page 29
Fiddlehead VDT VRH	Page 33
Black Hole Salvage	Page 39
Hog Wild	Page 45
Alderaan	Page 51
Sealed Bid Form and Instructions	Page 57
Statewide Bid Bond and Instructions	Page 59
Timber Sale per Sale Bid Bond and Instructions	Page 63
Log Sort Sealed Bid Form and Instructions	Page 67



Certification Opportunities for DNR Timber Purchasers

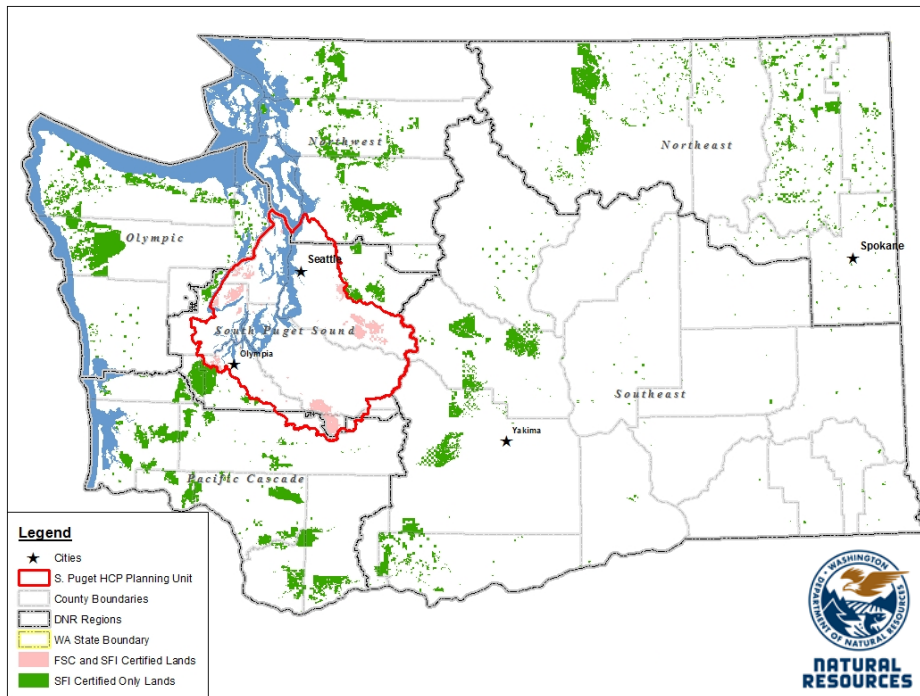
Certified forests are grown to an approved set of standards which demonstrate environmentally responsible, socially beneficial, and economically viable management practices that promote responsible forestry. This unique commitment to responsible forestry recognizes that forest landowners play a critical role in ensuring the long-term health and sustainability of our forests.

Forest Stewardship Council® (FSC®) is an independent, non-profit organization that promotes responsible management of the world's working forests through the development of forest management standards, a voluntary certification system, and trademarks that provide recognition and value to products bearing the FSC label in the marketplace. FSC standards ensure forestry is practiced in an environmentally responsible, socially beneficial, and economically viable way.

Sustainable Forestry Initiative Inc. is an independent, non-profit organization internationally endorsed and accepted around the world. The Sustainable Forestry Initiative® (SFI) program is based on the premise that responsible environmental behavior and sound business decisions can coexist. Its three-chamber Board of Directors governs all aspects of the SFI® program, with equal representation from the environmental, economic, and social sectors.

Currently, all Department of Natural Resources (DNR)-managed forestlands and conservation areas in Washington State are certified under the SFI program Standard. Forestlands within DNR's South Puget Habitat Conservation Plan Planning Unit, located within parts of King, Pierce, Thurston, Lewis, Kitsap, and Mason counties, are dually certified under both the FSC-US Forest Management Standard and the SFI program Standard.

Certification under each standard involves an inspection audit of the landowner's forest management activities by an independent, accredited third-party to verify that it meets specified forest management principles. If the forest unit complies with the specific standard, the landowner receives a certificate of conformance ensuring that responsible forestry is being practiced. Both standards encourage integration of perpetual growing and harvesting of trees with strong measures to protect wildlife, plants, soil, water, and air quality. Both standards provide a seal of approval that forests certified under these principles are well-managed. The global marketplace recognizes and endorses multiple forest certification standards. Each standard has individual market niches. By being dually certified, DNR can maximize its customer base and provide choices to the consumer.



DNR's FSC certificate number is: BV-FM/COC-080501

DNR's SFI certificate number is: PwC-SFIFM-513

DNR-managed forestlands within the South Puget Habitat Conservation Plan Planning Unit (located within parts of King, Pierce, Thurston, Lewis, Kitsap, and Mason counties) are certified as being in compliance with the Forest Stewardship US Forest Management Standard.

To learn more about chain of custody and demonstrating that your timber is derived from a responsibly managed forest and/or to learn more about becoming a participant in the FSC Program, visit <https://us.fsc.org/>.

To learn more about DNR timber sales certified under the FSC Standard, visit www.dnr.wa.gov.

FSC A.C. owns all right, title, and interest in and to the Forest Stewardship Council trademarks.

All DNR-managed forested state trust lands across the state have been certified as being in compliance with the Sustainable Forestry Initiative Forest Management Standard.

To learn more about chain of custody and demonstrating that your timber is derived from a responsibly managed forest and/or to learn more about becoming a participant in the SFI program, visit www.sfiprogram.org.

To learn more about DNR timber sales certified under the SFI program Standard, visit www.dnr.wa.gov.

SFI Marks are registered marks owned by Sustainable Forestry Initiative Inc.

To learn more about certification on DNR-managed forested state trust lands, visit <https://www.dnr.wa.gov/programs-and-services/product-sales-and-leasing/timber-sales/forest-certification> or contact:

Product Sales & Leasing Division, Product Sales Section:

Michael Kearney, Division Manager, 360-902-1088, michael.kearney@dnr.wa.gov
Steve Teitzel, Operations, 360-902-1741, steve.teitzel@dnr.wa.gov

Forest Resources Division, HCP and Scientific Consultation Section:

Allen Estep, Assistant Division Manager, 360-902-2898, allen.estep@dnr.wa.gov

Washington State Department of Natural Resources (DNR)

Bidder's/Purchaser's Inspection of Sale Area and Forest Products

Acreage estimates and volume estimates contained within each timber notice of sale and each timber sale contract are made only for administrative and identification purposes. Except as expressly provided by the timber sale contract, the purchaser shall be responsible for paying the entire purchase price, even if the actual acreage or timber volume varies from the estimated quantity or volume shown.

All prospective bidders have the opportunity and are expected to inspect the sale area and the forest products located thereon. Bidders shall not rely on any representations by the State including, but not limited to, acreage estimates, volume estimates, appraisal or pre-bid documentation. The successful bidder/purchaser will further warrant that they have entered the timber sale contract without any reliance upon the DNR's volume estimates, acreage estimates, appraisals, pre-bid documentation, or any other representation by the DNR.

Any timber sale contract arising out of these public auctions will require the successful purchaser to warrant that they are entering the timber sale contract based solely upon their own judgment of the value of the forest products, formed after their own examination and inspection of both the timber sale area and the forest products being sold.

Exclusion and Disclaimer of Warranties

The PARTIES AGREE that the IMPLIED WARRANTIES OF MERCHANTABILITY AND FITNESS FOR A PARTICULAR PURPOSE, and ALL OTHER WARRANTIES EXPRESS OR IMPLIED, ARE EXCLUDED from this transaction, and shall not apply to the goods sold. For example, THE FOLLOWING SPECIFIC MATTERS ARE NOT WARRANTED, and are EXCLUDED from this transaction:

- A. ***The merchantability of the forest products.*** The use of the term "merchantable" in any document is not intended to vary the foregoing.
- B. ***The condition of the forest products.*** All forest products will be conveyed "AS IS."
- C. ***The acreage contained within any sale area.*** Any acreage descriptions appearing in the timber notices of sale, timber sale contract, timber sale map or other documents are estimates only, provided solely for administrative and identification purposes.
- D. ***The volume, quality, or grade of the forest products.*** The descriptions of the forest products to be conveyed are estimates only, made solely for administrative and identification purposes.
- E. ***The correctness of any soil or surface conditions, presale construction appraisals, investigations, and all other pre-bid documents prepared by or for the State.*** These documents have been prepared for the State's appraisal purposes only.
- F. ***That the sale area is free from threatened or endangered species, or their habitat.*** The State is not responsible for any interferences with forestry operations that result from the presence of any threatened or endangered species, or the presence of their habitat, within the sale area.
- G. That the forestry operations to be performed under this contract will be free from regulatory actions by governmental agencies. The State is not responsible for actions to enforce regulatory laws, such as the Washington Forest Practices Act (Chapter 76.09 RCW), taken by the Department of Natural Resources or any other agency that may affect the operability of these timber sales.
- H. Items contained in any other documents prepared for or by the State.

Please also see timber sale contract clause G-060 for further information.

BIDDING PROCEDURES FOR TIMBER AUCTIONS

The general requirements that follow are a part of all Timber Notices of Sale to be auctioned by the Department of Natural Resources (DNR).

General Information

The State reserves the right to waive minor irregularities and the right to reject any or all bids.

- A. This book contains the timber notices of sale and maps for each timber sale scheduled to be auctioned. More specific information can be obtained by contacting the appropriate region office at the number listed on the back cover of this book. Sales may be added to each monthly auction by the Department which are not included in this publication. This publication is not updated following original production.
- B. The timber notice of sale is a summary of sale information. For more specific information, interested parties are encouraged to view the Auction Packets on www.dnr.wa.gov. Auction Packets contain **DRAFT** copies of the timber notice of sale, map, contract, road plan, cruise data, precruise and cruise narrative, and other associated documents.
- C. Timber sale auction packets may also be obtained at no charge for individual sales by visiting the appropriate region office.
- D. Timber sale contracts contain extensive terms and conditions that will be binding upon successful high bidders. Each bidder should carefully review all terms contained in the appropriate **DRAFT** timber sale contract prior to bidding on a sale, and should review the final contract prior to signing. **DRAFT** timber sale contracts are contained in the auction packets and are available upon request at the respective region office.
- E. Sales advertised in this book are subject to the Board of Natural Resources approval before they will be sold. The Board meets and approves sales approximately six weeks prior to auction.
- F. The State does not guarantee the accuracy of any information contained herein pertaining to particular sales. Therefore, all prospective purchasers are expected to make their own independent inspections and appraisals prior to bidding.
- G. If any conflict exists between the information in the Timber Notice of Sale, timber sale map, sale auction packets and that in the timber sale contract, the signed contract will prevail.
- H. Purchasers must pay the Forest Excise Tax on the bid price, permanent road construction costs, and other considerations. The tax rate is 5% without the EARR credit and 4.2% with the credit. For more information contact the Department of Revenue, Forest Tax Section at 1-800-548-8829.
- I. **All sales are subject to confirmation by the DNR under RCW 79.15.120.**
- J. **Within 30 days of sale confirmation, the apparent high bidder will provide to the State the Performance Security specified on each Notice of Sale. The successful bidder also agrees to return a signed contract to the State within 30 days of confirmation.** Failure to provide a signed contract to the state within 30 days of confirmation may result in a loss of bidder's rights to the products sold and forfeiture of initial deposit moneys.
- K. Each DNR region office has information about sales offered in that region. For further information, contact the respective DNR region office. Region office addresses and telephone numbers appear on the back cover of this booklet.
- L. The purchaser assumes the responsibility for any costs associated with extra maintenance or repair levied by a county for any county road used by the purchaser.

Auction Time and Location

Auctions will start at 10:00 a.m. and close at 4:00 p.m. on the date and at the location specified in each Timber Notice of Sale.

Bidding Process

- A. All timber will be auctioned using the sealed bid method.
- B. Bids submitted on the day of auction must be in the bid box at the specified auction location before 10:00 a.m. The respective DNR region office must receive mailed bids by 4:30 p.m., on the last business day before the auction. Bidders assume all risk for the method of delivery.
- C. The DNR has the right to reject bid forms that are completed incorrectly. *All bid forms must have an original signature on behalf of the person or entity submitting the bid, and must be on the form provided in this booklet or a photocopy thereof. Revised documents are not permissible.* Bidding instructions are on the back of the Sealed Bid Form. A bid deposit must be included in the sealed bid envelope unless using a Timber Sale Statewide Bid Bond.
- D. All bids must include the completed Sealed Bid Form and bid deposit.
- E. Bids will be opened in each respective region in the order in which sales appear in the Public Auction Sale of Timber book (alphabetically by county and by agreement number). Sales added after the book is printed will be inserted to retain this order. Sort sales may be auctioned out of this sequence at the State's convenience.
- F. If a tie bid occurs, the names of the tie bidders will be placed in a hat and the successful bidder will be determined by a drawing.
- G. Opportunities to Withdraw Bids:
For all sales offered on a stumpage basis only, the apparent high bidder on a particular sale will have the option of withdrawing additional sealed bids submitted for any remaining sales to be auctioned. The apparent high bidder must exercise this option within two minutes after the apparent high bidder is announced. This option is not available for sales offered on a delivered basis.

Eligibility to Bid

The following criteria must be met in order to bid on State timber sales:

- 18 years of age (or have a co-signer who meets the eligibility requirements)
- Licensed to do business in the State of Washington
- Eligible to bid on Export Restricted timber
- Authorized to submit bids

Authorized Representatives

Company officers or company authorized representatives may bid on State sales, sign State documents, or sign checks. A list of authorized representatives and their specific authorities must be submitted, in writing, to the Department of Natural Resources, Product Sales and Leasing Division, P.O. Box 47014, Olympia, Washington, 98504-7014, ten days in advance of the auction. *A company owner or officer must sign this submittal.*

Bid Deposits

- A. Required bid deposits are listed on each Timber Notice of Sale.
- B. Bid deposits must be in the form of cash, certified check, cashiers' check, money order or bid bond.
- C. Bid bonds may be either a Timber Sale Per Sale Bid Bond or a Timber Sale Statewide Bid Bond.
- D. All bid deposits shall be submitted by the person or entity submitting the bid and made payable to the Department of Natural Resources. **Third party deposits will not be accepted.**

Timber Sale Per Sale Bid Bonds

- A. The Per Sale Bid Bond shall guarantee payment of the bid deposit **within ten days of auction.**
- B. The balance between the bid bond and the Initial Deposit payment is due **by 4:30 p.m., on the day of auction.**
- C. Additional forms and instructions for a Per Sale Bid Bond are available at any DNR region office.

Timber Sale Statewide Bid Bond

- A. Statewide Bid Bonds shall guarantee payment of the Initial Deposit on any statewide timber sale while the bond is in effect.
- B. The Statewide Bid Bond must be received by the Department of Natural Resources, Product Sales and Leasing Division, P.O. Box 47014, Olympia, Washington, 98504-7014, ten days in advance of the auction date. The bond shall be in the amount of \$150,000.00.
- C. Successful bidders using a Statewide Bid Bond must pay the total Initial Deposit payment (10% of the total bid price) **by 4:30 p.m., on the day of the auction.**
- D. A Statewide Bid Bond cannot be used to secure the Initial Deposit payment due the day of auction.
- E. Additional forms and instructions for a statewide bid bond are available at any DNR region office.

Payments

The initial deposit for a sale is 10% of the total bid value as submitted by the apparent high bidder (25% if the bidder is a defaulter as defined under WAC 332-140-300) and never less than \$5,000.00 for lump sum sales. For Lump Sum sales appraised at less than \$5,000.00, the entire bid value is due on day of auction.

- A. Apparent high bidders using cash, certified check, cashiers' check or money order as a bid deposit must pay the total Initial Deposit amount by 4:30 p.m. on auction day.
- B. Apparent high bidders using a Timber Sale Per Sale Bid Bond as a bid deposit must pay the difference between the bid deposit and the total initial deposit by 4:30 p.m., on the day of auction. The bid bond amount must be replaced with a certified check, cashiers' check, bank draft, cash, money order, or wire transfer within ten days of the auction.
- C. Apparent high bidders using a Timber Sale Statewide Bid Bond must pay the entire Initial Deposit amount by 4:30 p.m. on the day of auction.
- D. All payments must be in the form of a certified check, cashiers' check, bank draft, cash, money order or wire transfer.



Summary Report of All Sales for the Month of August 2023

Board Sales

<u>County</u>	<u>Region</u>	<u>Agree #</u>	<u>FSC® Sale Name</u>	<u>Volume</u>	<u>Value</u>
Clallam Jefferson	Olympic	103770	UPPER SALMON CREEK	6,929	\$2,103,000.00
Grays Harbor	Pacific Cascade	104129	DEANS DELIGHT SORTS	3,151	\$1,874,738.00
Mason	South Puget	102107 *	LITTLE WRANGLER	2,454	\$705,000.00
Skagit	Northwest	104583	EXTRA CHRISTIE	734	\$287,000.00
Skamania	Pacific Cascade	103982	FIDDLEHEAD VRH VDT	3,656	\$691,000.00
Skamania	Pacific Cascade	104702	BLACK HOLE SALVAGE	3,789	\$1,041,000.00
Snohomish	Northwest	104148	HOG WILD VRH VDT	6,292	\$1,174,000.00
Total				27,005	\$7,875,738.00

Region Sales

<u>County</u>	<u>Region</u>	<u>Agree #</u>	<u>FSC Sale Name</u>	<u>Volume</u>	<u>Value</u>
Clallam	Olympic	104353	ALDERAAN	1,130	\$213,000.00
Total				1,130	\$213,000.00



Scan with your smartphone or tablet to go to the August 2023 timber auction page



TIMBER NOTICE OF SALE

SALE NAME: UPPER SALMON CREEK

AGREEMENT NO: 30-103770

AUCTION: August 30, 2023 starting at 10:00 a.m., Olympic Region Office, Forks, WA

COUNTY: Clallam, Jefferson

SALE LOCATION: Sale located approximately 33 miles east of Port Angeles

PRODUCTS SOLD AND SALE AREA:

All timber, except timber that has been on the ground for five years or more (Five years is defined by more than 1.5 inches of sap rot); any downed red cedar be removed., trees marked with a band of blue paint or bounded out by leave tree area tags; bounded by timber sale boundary tags, timber type change, and the PT-B-2000 road in Unit 1; timber sale boundary tags, timber type change, and the PT-B-2000 and PT-B-2400 roads in Unit 2; timber sale boundary tags and the PT-B-3000 road in Unit 3; timber sale boundary tags in Unit 4.

All timber bounded by right of way boundary tags in Units 5. Title to timber in Unit 5 does not transfer to purchaser unless road PT-B-2440 is actually constructed.

All timber bounded by right of way boundary tags in Units 6.

All forest products above located on part(s) of Sections 28, 29 and 31 all in Township 29 North, Range 2 West, W.M., containing 188 acres, more or less.

CERTIFICATION: This sale is certified under the Sustainable Forestry Initiative® program Standard (cert no: PwC-SFIFM-513)

ESTIMATED SALE VOLUMES AND QUALITY:

Table with columns: Species, Avg DBH, Ring Count, Total MBF, and MBF by Grade (1P, 2P, 3P, SM, 1S, 2S, 3S, 4S, UT). Rows include Douglas fir, Hemlock, Redcedar, Red alder, Maple, and Sale Total.

MINIMUM BID: \$2,103,000.00

BID METHOD: Sealed Bids

PERFORMANCE SECURITY:

\$100,000.00

SALE TYPE: Lump Sum

EXPIRATION DATE: October 31, 2025

ALLOCATION: Export Restricted

BID DEPOSIT: \$210,300.00 or Bid Bond. Said deposit shall constitute an opening bid at the appraised price.

HARVEST METHOD: Ground Based 100%. Forest products harvested under this contract shall be harvested and removed using ground based equipment as shown in the Logging Plan Maps with the following restrictions: shovel only Unit 1; Units 2 and 3 non-tethered equipment will not operate on sustained slopes over 45%; tethered feller bunchers and shovels may operate on slopes above 45%. The west end of Unit 3 and all of Unit 4 are designated to shovel



TIMBER NOTICE OF SALE

only and are restricted from November 1st through March 30th. Authority to use other equipment or to operate outside the equipment specifications detailed above must be approved in writing by the State. Falling and Yarding will not be permitted on weekends and State recognized holidays unless authorized in writing by the Contract Administrator.

ROADS:

7.70 stations of required construction. 9.50 stations of required reconstruction. 43.91 stations of optional construction. 2.70 stations of optional reconstruction. 367.80 stations of required prehaul maintenance. 40.25 stations of optional prehaul maintenance. Any road work, right-of-way timber falling and yarding, rock pit operation of heavy equipment on the FS-2850/ Woods Rd. performed during the marbled murrelet nesting season (April 1 through September 23) is restricted to two hours after sunrise to two hours before sunset. This restriction does not apply to hauling timber, rock or equipment. All roadwork activities, including timber haul, rock haul, and rock pit development will not be permitted from November 1 to April 30, or on weekends or State recognized holidays unless authorized in writing by the Contract Administrator.

ACREAGE DETERMINATION

CRUISE METHOD: Sale acreage was 100% GPS'd. Sale units were cruised using a variable plot sample.

FEES: \$118,252.00 is due on day of sale. \$9.00 per MBF is due upon removal. These are in addition to the bid price.

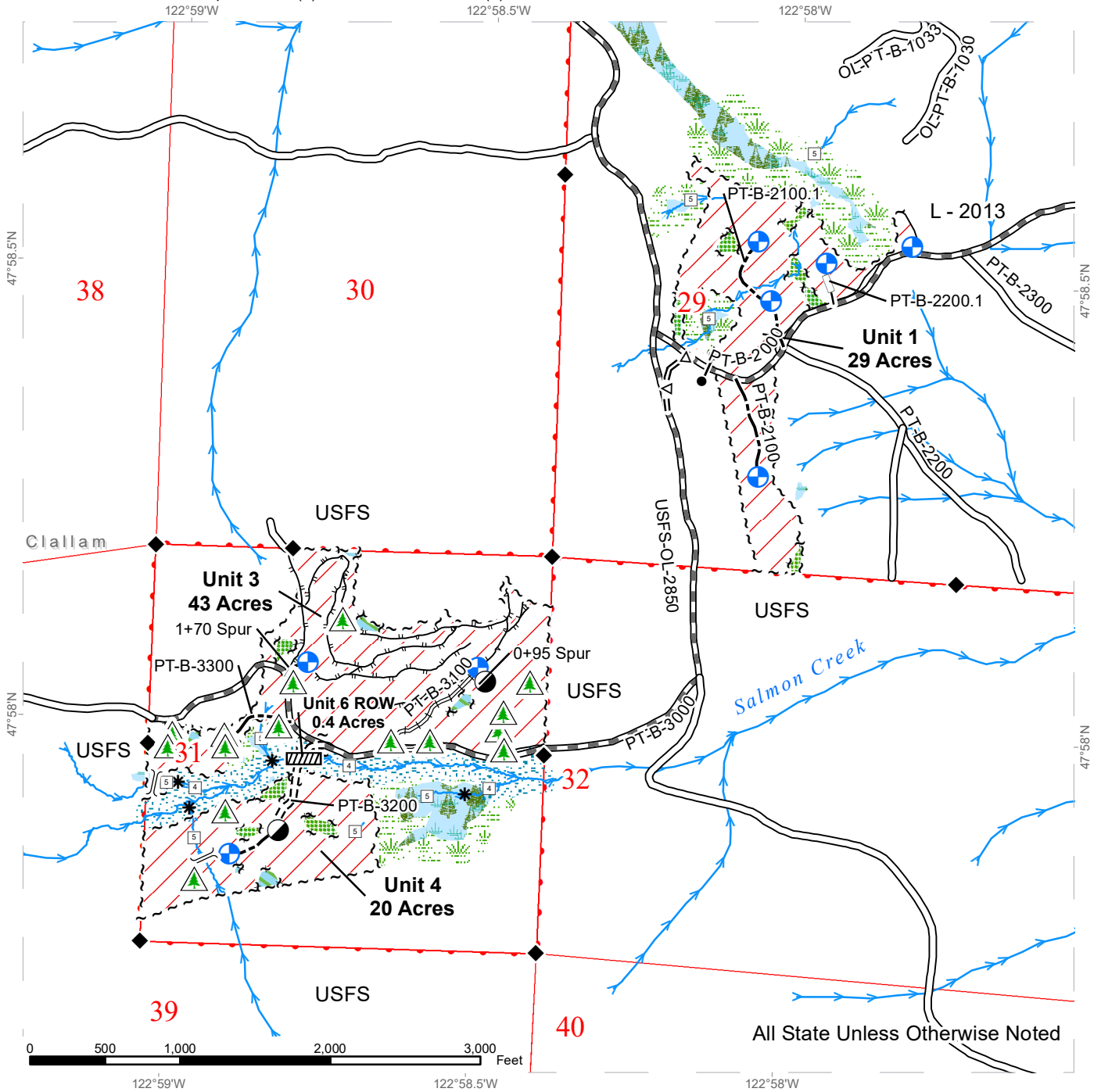
SPECIAL REMARKS: There are locked gates located on the PT-B- 1020 and PT-B- 2000 roads. Contact Olympic Region Dispatch at 360-374-2800 to obtain a AA-1 key.

An area located in Unit 1 of the harvest may have imbedded metal in trees. This area is highlighted on the logging plan map.

TIMBER SALE MAP

SALE NAME: UPPER SALMON CREEK
AGREEMENT #: 30-103770
TOWNSHIP(S): T29R2W
TRUST(S): Capitol Grant (7), State Forest Transfer (1)

REGION: Olympic Region
COUNTY(S): Clallam, Jefferson
ELEVATION RGE: 760-1600

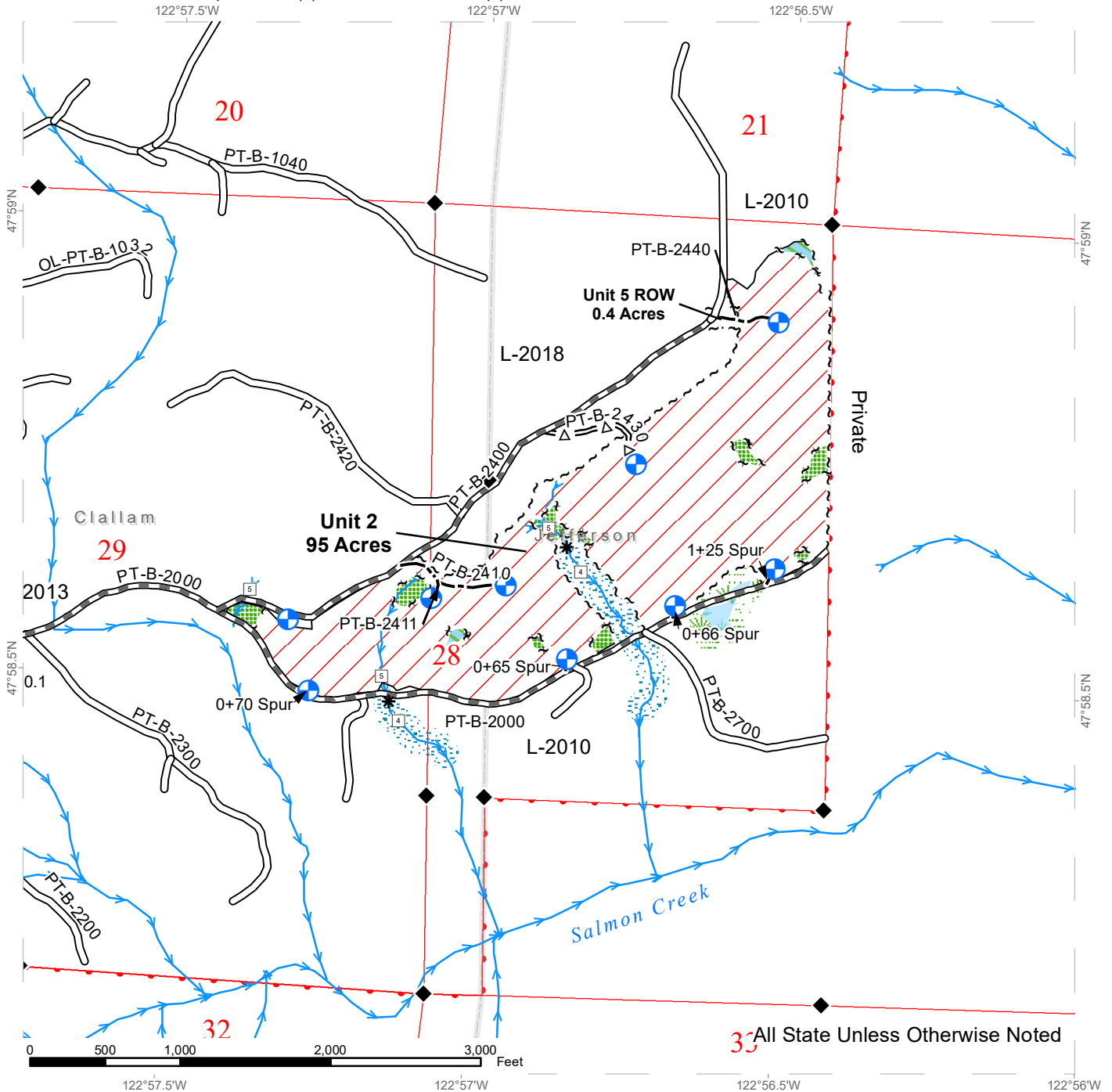


Variable Retention Harvest	Streams	Non-Tradeable Leave Trees	Townships
Existing Roads	Stream Type	Proposed Landing	DNR Managed Lands
Required Pre-Haul Maintenance	Stream Type Break	Non-Tradeable Leave Clump	
Required Construction	Survey Monument	Leave Tree Area	
Required Reconstruction	Culvert	Riparian Mgt Zone	
Optional Pre-Haul Maintenance	Designated Crossing	Forested Wetland	
Optional Construction	Designated Landing	Wetland Mgt Zone	
Optional Reconstruction	Gate (AA1)	Sections	
Designated Skid Trail			

TIMBER SALE MAP

SALE NAME: UPPER SALMON CREEK
AGREEMENT #: 30-103770
TOWNSHIP(S): T29R2W
TRUST(S): Capitol Grant (7), State Forest Transfer (1)

REGION: Olympic Region
COUNTY(S): Clallam, Jefferson
ELEVATION RGE: 760-1600



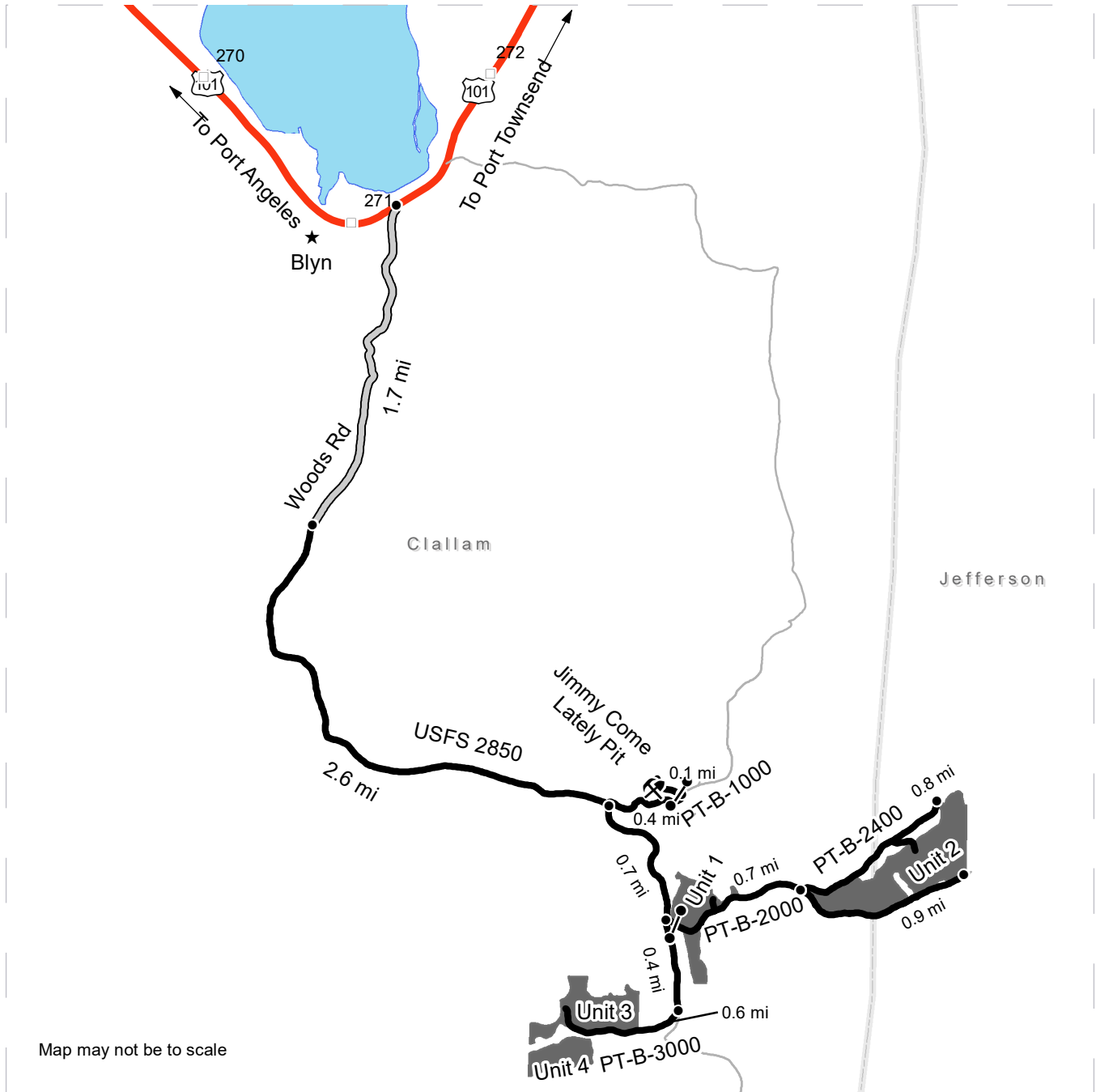
Variable Retention Harvest	Streams	Wetland Mgt Zone
Existing Roads	Stream Type	Sections
Required Pre-Haul Maintenance	Stream Type Break	Townships
Required Construction	Survey Monument	DNR Managed Lands
Required Reconstruction	Proposed Landing	
Optional Pre-Haul Maintenance	Non-Tradeable Leave Clump	
Optional Construction	Leave Tree Area	
Optional Reconstruction	Riparian Mgt Zone	
Designated Skid Trail	Forested Wetland	



DRIVING MAP

SALE NAME: UPPER SALMON CREEK
AGREEMENT#: 30-103770
TOWNSHIP(S): T29R2W
TRUST(S): Capitol Grant (7), State Forest Transfer (1)

REGION: Olympic Region
COUNTY(S): Clallam, Jefferson
ELEVATION RGE: 760-1600



Map may not be to scale

- Timber Sale Unit
- Haul Route
- Other Road
- County Road
- Milepost Markers
- Distance Indicator
- Gate (AA1)
- ⛏ Rock Pit
- Town

DRIVING DIRECTIONS:

On highway 101 between mile marker 271 and 272 turn south on woods road. Continue down woods road for 1.7 miles onto USFS 2850 (same road). Remain on USFS 2850 for another 2.6 miles. For Jimmy Come Lately Pit turn left onto PT-B-1000 road for 0.4 miles. Then turn left onto PT-B-1020 road. Pit is behind yellow gate. For sale, continue on USFS 2850 from PT-B-1000 intersection for 0.7 miles to PT-B-2000 road. For Units 1-2 turn left on PT-B-2000 and go through gate. Unit 1 is just after the gate on both sides of the road. To get to unit 2 drive 0.7 miles along PT-B-2000 road to Y in road. Unit is directly between the Y and can be accessed from above on the PT-B-2400 and below along the PT-B-2000 road. To access Units 3 and 4 continue along USFS 2850 from the PT-B-2000 intersection for another 0.4 miles. Turn right on the PT-B-3000 road and drive 0.5 miles. Unit 3 is on the right starting at the state property boundary about 0.3 miles up. Unit 4 can be accessed by crossing Salmon Creek from the corner at about 0.5 miles up the road.





TIMBER NOTICE OF SALE

SALE NAME: DEANS DELIGHT SORTS

AGREEMENT NO: 30-104509 - 30-104519

AUCTION: August 31, 2023 starting at 10:00 a.m.
Pacific Cascade Region Office, Castle Rock, WA

COUNTY: Grays Harbor

SALE LOCATION: Sale located approximately 10 miles west of Oakville

**PRODUCTS SOLD
AND SALE AREA:**

All delivered logs, except leave trees marked with blue paint, trees bound with yellow "Leave Tree Area" tags, all down timber existing 5 years prior to the day of sale, all downed timber greater than 24 inches diameter and snags, bound by the following:

Unit 1, white "Timber Sale Boundary" tags and pink "Timber Harvest Boundary" flagging, reprod and Y-7000 road; meeting the specifications described below; on parts of Sections 13, and 14 all in Township 16 North, Range 6 West W.M., containing 72 acres, more or less.

MINIMUM BID AND ESTIMATED LOG VOLUMES:

Agreement #	Sort #	Species and Sort Specifications	Average Log Length	Estimated Volume		Tons Per MBF	Minimum Bid Delivered Prices		Total Appraised Value	Bid Deposit
				Mbf	Tons		\$/mbf	\$/Ton		
104509	1	DF 5"-11"	28'	214	1519	7.1	\$550.00		\$117,700.00	\$11,770.00
104510	2	DF 12"-19"	28'	670	3953	5.9	\$625.00		\$418,750.00	\$41,875.00
104511	3	DF 20"+	28'	1314	6570	5	\$625.00		\$821,250.00	\$82,125.00
104512	4	DF HQ 12"+	28'	257	1311	5.1	\$750.00		\$192,750.00	\$19,275.00
104513	5	RA 5"-7"	N/A	124	1054	8.5		\$40.00	\$42,160.00	\$4,216.00
104514	6	RA 8"+	26'	313	2128	6.8	\$500.00		\$156,500.00	\$15,650.00
104515	7	RC 5"+	26'	18	130	7.2	\$1,250.00		\$22,500.00	\$2,250.00
104516	8	WW 5"+	28'	204	1224	6	\$450.00		\$91,800.00	\$9,180.00
104517	9	SS 12"+	N/A	10	50	5		\$30.00	\$1,500.00	\$150.00
104518	10	Conifer Pulp 2"+	N/A	25	325	13		\$28.00	\$9,100.00	\$910.00
104519	11	Hardwood Pulp 2"+	N/A	2	26	13		\$28.00	\$728.00	\$72.80

Totals: **3151 18290 \$1,874,738.00**

CERTIFICATION: This sale is certified under the Sustainable Forestry Initiative® program Standard (cert no: PwC-SFIFM-513)

BID METHOD: Sealed Bids **UNIT OF MEASURE:** MBF Scale/Tonnage Scale

EXPIRATION DATE: January 15, 2024 **ALLOCATION:** Export Restricted

PAYMENT SECURITY: To be determined by the State as described in Clause P-045.2 of the Purchaser's Contract.

BIDDING PROCEDURES: A separate sealed bid and envelope must be submitted for each log sort. Prospective Purchasers may bid on any or all log sorts. On the day of sale the Purchaser must bring their bid deposit up to 10% of their total bid price. Complete bidding procedures and auction information may be obtained from the Pacific Cascade Region Office in Castle Rock WA. Phone number (360)577-2025.



TIMBER NOTICE OF SALE

TIMBER EXCISE TAX:

Purchaser must pay the forest excise taxes associated with the log sorts delivered to them. The tax rate for this sale is 4.2 %. Taxable Stumpage = Total Delivered Value – (Harvest Cost + Estimated Haul Cost + ARRF). For more information contact the Department of Revenue, Forest Tax Section at 1-800-548-8829.

Use the following rates for estimating taxable stumpage:

Payment for Harvesting (OBT): The State's payment to the Contractor for harvesting (OBT Rate) adjusted each quarter using the following formula:

$$\text{Harvester's OBT Rate} = (Q(x) - Q(\text{base})) \times 100 \times \$0.04 + \text{Harvester's OBT Bid Rate}$$

Where;

Q(base) = Average fuel price for quarter preceding harvesting services contract bid opening.

Q(x) = Average fuel price for quarter preceding log deliveries.

Harvester's OBT Rate shall not be less than their original bid rate.

Harvest Cost = \$150.69 per MBF for sorts 1, 2, 3, 4, 6, 7 and 8, \$14.00 per Ton for sorts 10 and 11 and \$16.00 per Ton for sorts 5 and 9.

Hauling Services Payment Rate per Ton
= (Base Rate + Mileage Rate) x (Contractor's hauling bid factor)

Base Rate = \$2.35 per ton

Mileage Rate = ((\$0.16 x C miles) + (\$0.11 x A miles)) x Fuel Index Factor

ARRF = \$0.00 per MBF for sorts 10 and 11 and \$26.00 per MBF for sorts 1, 2, 3, 4, 5, 6, 7, 8 and 9.

Note: To calculate ARRF rates per ton use the tons\mbf conversion factor in the table above.

Long-haul surcharge: An additional haul payment of \$25/mbf net scale for mbf scale sorts or \$4.60/ton for tonnage sorts will be added for delivery destinations in excess of 250 total one-way miles (A miles plus C miles).

CONFIRMATION:

Each sort is subject to confirmation following auction. Sorts will not be confirmed until at least 10 days after auction. Final contract award is contingent upon the State's haul cost analysis. Actual haul route may vary and is subject to change at the State's discretion.



TIMBER NOTICE OF SALE

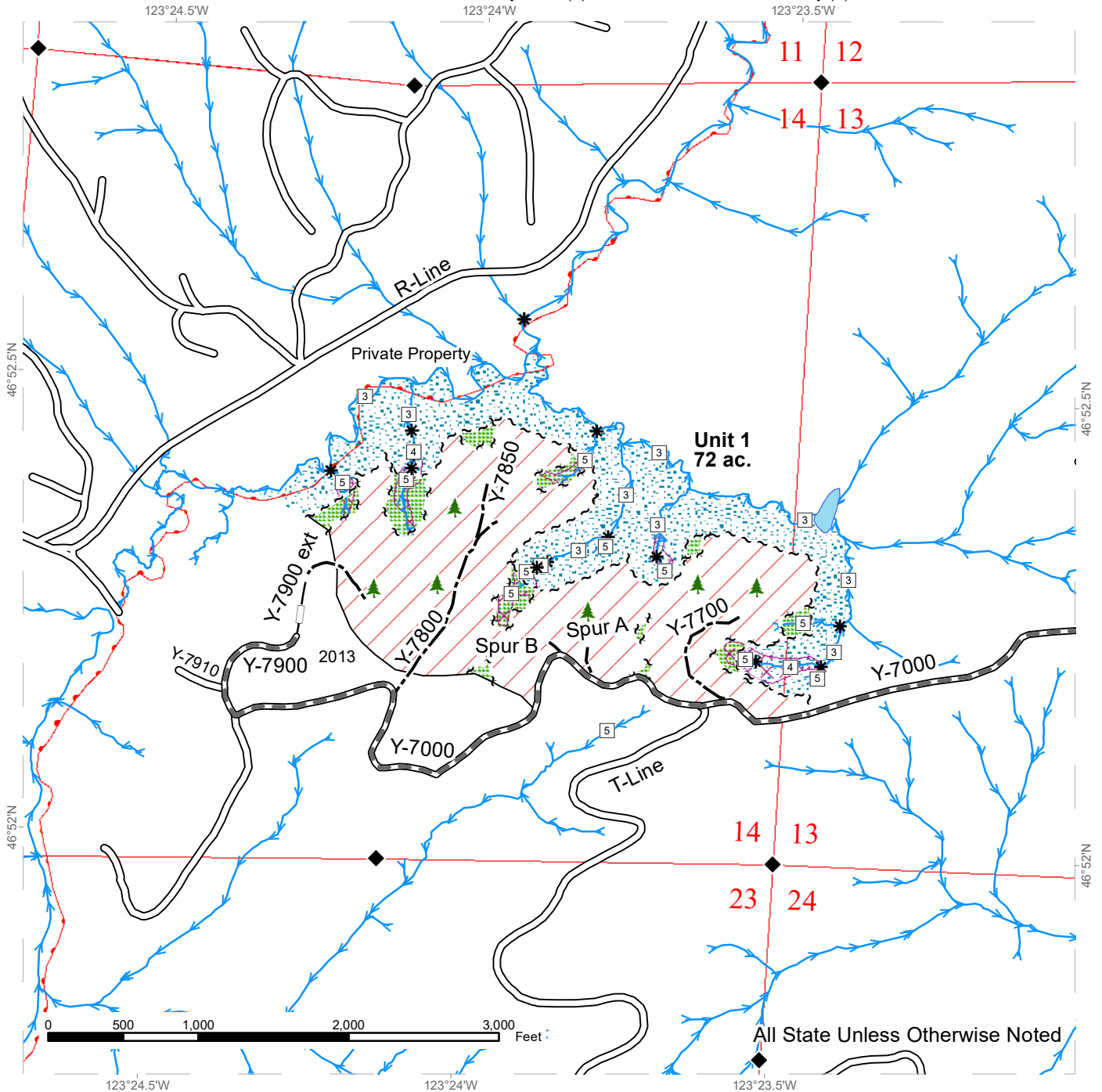
SPECIAL REMARKS: The successful Purchaser(s) will be required to purchase logs from the sale area upon delivery to their location specified in the bid submitted. Logs will be delivered to the Purchaser's delivery location by the State's contract harvester. Purchaser is responsible for weighing and scaling costs. All tonnage loads will be weighed and all mbf loads will be scaled at State approved locations. The State reserves the right to determine where logs are authorized to be scaled and weighed.

For more information regarding this log sort sale visit our web site:
<http://www.dnr.wa.gov/programs-and-services/product-sales-and-leasing/timber-sales/timber-auction-packets>. If you have questions call Josh Watten at the Pacific Cascade Region Office at (360)577-2025 or Steve Teitzel at the Product Sales and Leasing Division Office in Olympia at (360)480-3910.

TIMBER SALE MAP

SALE NAME: DEANS DELIGHT SORTS
AGREEMENT #: 30-104129
TOWNSHIP(S): T16R6W
TRUST(S): Charitable/Educational/Penal & Reformatory Instit. (6), Common School and Indemnity (3)

REGION: Pacific Cascade Region
COUNTY(S): Grays Harbor
ELEVATION RGE: 520-800



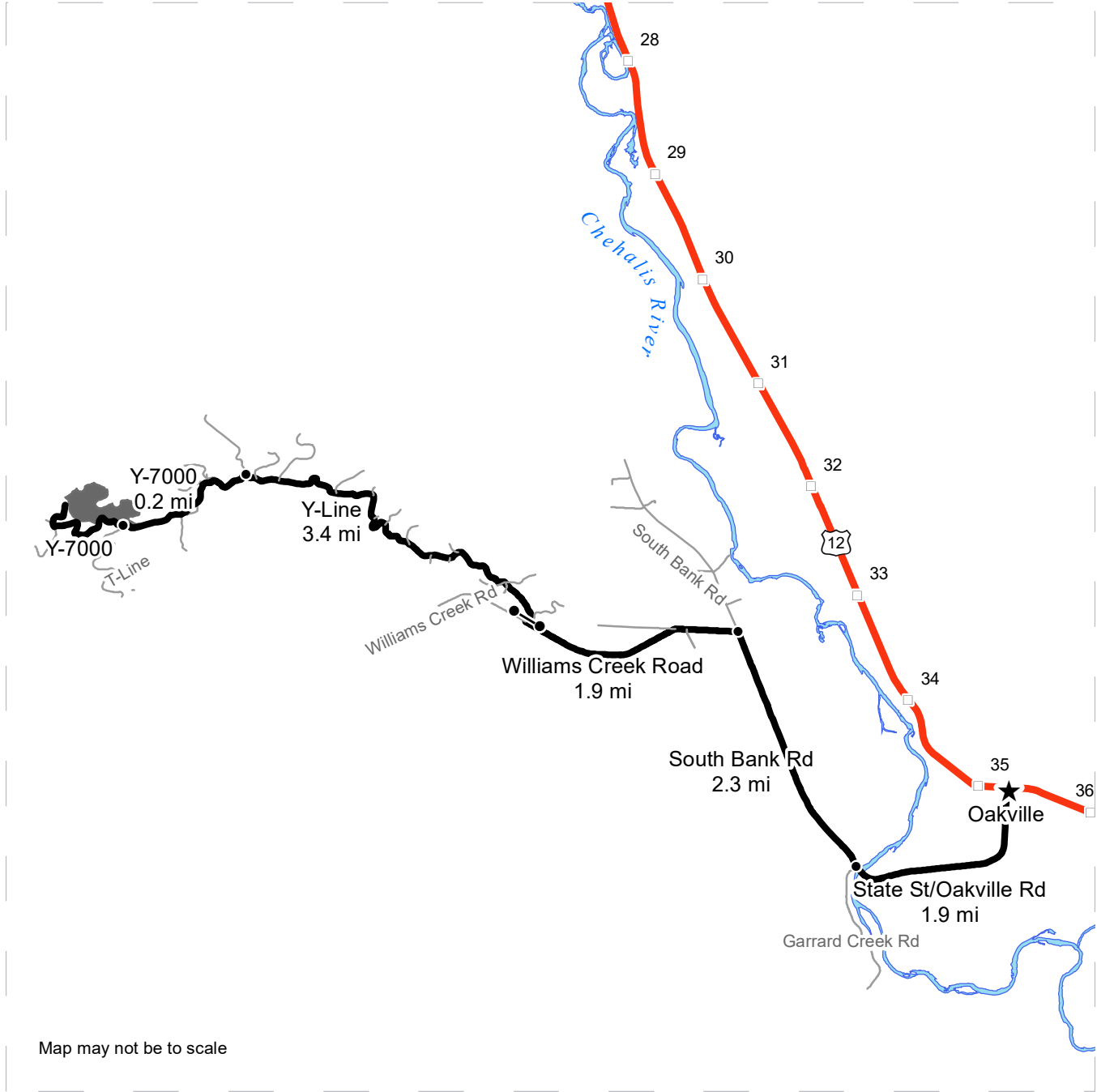
	Sale Area		Existing Roads		Streams
	Leave Tree Area		Required Pre-Haul Maintenance		Stream Type
	Riparian Mgt Zone		Optional Construction		Stream Type Break
	Potentially Unstable Slopes		Optional Reconstruction		Leave Tree Area <1/4-acre
			Sale Boundary Tags		DNR Managed Lands
			Leave Tree Tags		Survey Monument
			Timber Type Change		



DRIVING MAP

SALE NAME: DEANS DELIGHT SORTS
AGREEMENT#: 30-104129
TOWNSHIP(S): T16R6W
TRUST(S): Charitable/Educational/Penal & Reformatory Instit. (6), Common School and Indemnity (3)

REGION: Pacific Cascade Region
COUNTY(S): Grays Harbor
ELEVATION RGE: 520-800



- Timber Sale Unit
- Haul Route
- Other Route
- Milepost Markers
- Distance Indicator
- Gate (PCP 1-1)

DRIVING DIRECTIONS:

From the intersection of US-12 and State St. in Oakville, head south on State St., then west where it becomes Oakville Rd. for 1.9 miles. Continue straight onto South Bank Rd. and follow for 2.3 miles, then turn left on Williams Creek Rd. Continue for 1.9 miles to reach State Land and the Y-Line (gate). Continue on the Y-Line for 3.4 miles, keep left onto the Y-7000 for 0.2 miles to reach the intersection of the Y-7000 and the T-Line. Unit 1 is located north of this intersection.





TIMBER NOTICE OF SALE

SALE NAME: LITTLE WRANGLER

AGREEMENT NO: 30-102107

AUCTION: August 29, 2023 starting at 10:00 a.m., COUNTY: Mason South Puget Sound Region Office, Enumclaw, WA

SALE LOCATION: Sale located approximately 10 miles west and northwest of Belfair.

PRODUCTS SOLD AND SALE AREA:

All timber, except trees marked with blue paint or bounded out by yellow leave tree area tags, snags and down timber existing more than 5 years from the day of sale, bounded by the following: white timber sale boundary tags, property boundary marked with white Carsonite posts, and timber type change marked with pink flagging in Unit #1; white timber sale boundary tags in Units #2 and #5; white timber sale boundary tags in Unit #3; white timber sale boundary tags, and property boundary marked with white Carsonite posts in Unit #4; white timber sale boundary tags, property boundary marked with white Carsonite posts, timber type change marked with pink flagging, and G-5100 Road in Unit #6; white timber sale boundary tags, timber type change marked with pink flagging, and Haven Way, I-3020, I-3040, and I-3050 roads in Unit #7;

All timber bounded by orange right of way tags, except that title to timber within the right of way tags is not conveyed to the Purchaser unless the road segment is actually constructed in right of way Units #8 and #10;

All timber bounded by orange right of way tags and white timber sale tags, except that title to timber within the right of way tags is not conveyed to the Purchaser unless the road segment is actually constructed in right of way Units #9, #11, and #12;

All forest products above located on part(s) of Sections 16, 21, 29 and 30 all in Township 23 North, Range 2 West, W.M., containing 158 acres, more or less.

CERTIFICATION: This sale is certified under the Sustainable Forestry Initiative® program Standard (cert no: PwC-SFIFM-513) and FSC 100% raw materials under the Forest Stewardship Council® Standard (cert no: BV-FM/COC-080501).

ESTIMATED SALE VOLUMES AND QUALITY:

Table with columns: Species, Avg DBH, Ring Count, Total MBF, and MBF by Grade (1P, 2P, 3P, SM, 1S, 2S, 3S, 4S, UT). Rows include Douglas fir, Lodgepole, White pine, Hemlock, Red alder, and Sale Total.

MINIMUM BID: \$705,000.00 BID METHOD: Sealed Bids

PERFORMANCE SECURITY: \$100,000.00 SALE TYPE: Lump Sum

EXPIRATION DATE: November 30, 2025 ALLOCATION: Export Restricted



TIMBER NOTICE OF SALE

BID DEPOSIT: \$70,500.00 or Bid Bond. Said deposit shall constitute an opening bid at the appraised price.

HARVEST METHOD: Harvest activities are estimated to be 100 percent ground based harvest. Yarding may be restricted during wet weather if rutting becomes excessive, per clause H-017.

Felling, yarding, and timber haul will not be permitted weekdays from 7:00 pm to 7:00 am, weekends or State recognized holidays, unless authorized in writing by the Contract Administrator.

ROADS: 210.86 stations of optional construction. 135.70 stations of required prehaul maintenance. 135.70 stations of required post-haul maintenance. 121.67 stations of required post-haul maintenance, if constructed. 85.84 stations of required abandonment, if constructed. 2.60 stations of closure, if constructed. Purchaser maintenance on all roads used.

Rock for this proposal may be obtained from the State owned Sandhill Pit at no cost to the Purchaser or any commercial rock source at the Purchaser's expense. Rock source development is to be completed per Section 6 and as specified in the Rock Source Development Plan in the Road Plan.

Operation of road construction equipment and rock haul will not be permitted weekdays from 7:00 pm to 7:00 am, weekends or State recognized holidays, unless authority to do so is granted, in writing, by the Contract Administrator.

ACREAGE DETERMINATION

CRUISE METHOD: Acreage was determined by traversing boundaries by GPS and by multiplying length times width. GPS data files are available at DNR's website for timber sale packets. See cruise narrative for cruise method.

FEES: \$41,718.00 is due on day of sale. \$9.00 per MBF is due upon removal. These are in addition to the bid price.

SPECIAL REMARKS: This sale contains Douglas-fir poles and high quality saw logs.

Dust abatement is required on the G-4000 Road per contract clause C-130.

Purchaser will be required to obtain a road approach permit with Mason County for the I-3010 Road to access Unit #7. A copy of the executed permit will need to be provided to the Contract Administrator prior to operations beginning in that unit.

Purchaser shall fell all snags inside the sale area within 200 feet of Haven Way, as directed by the Contract Administrator.

This sale includes extreme hazard abatement, 100 feet along Haven Way and 200 feet from powerlines along Haven Way in Unit #7, and 200 feet from structures and fire line construction along property line, where feasible, as determined by the Contract Administrator in Units #4, and #6. Purchaser shall provide a slash disposal plan for hazard abatement, per contract clause S-020.

Trees marked with a double (2) band of orange paint within Units #4 and #7 shall be high stumped above the orange band to protect survey monuments. Trees shall be felled away from survey monuments.



TIMBER NOTICE OF SALE

Non-tradeable leave trees marked with a double (2) band of blue paint shall NOT be cut.

Non-tradeable leave trees in Unit #3 marked with a triple (3) band of blue paint are to be felled and left on-site as downed wood to facilitate construction of the G-5220 Road.

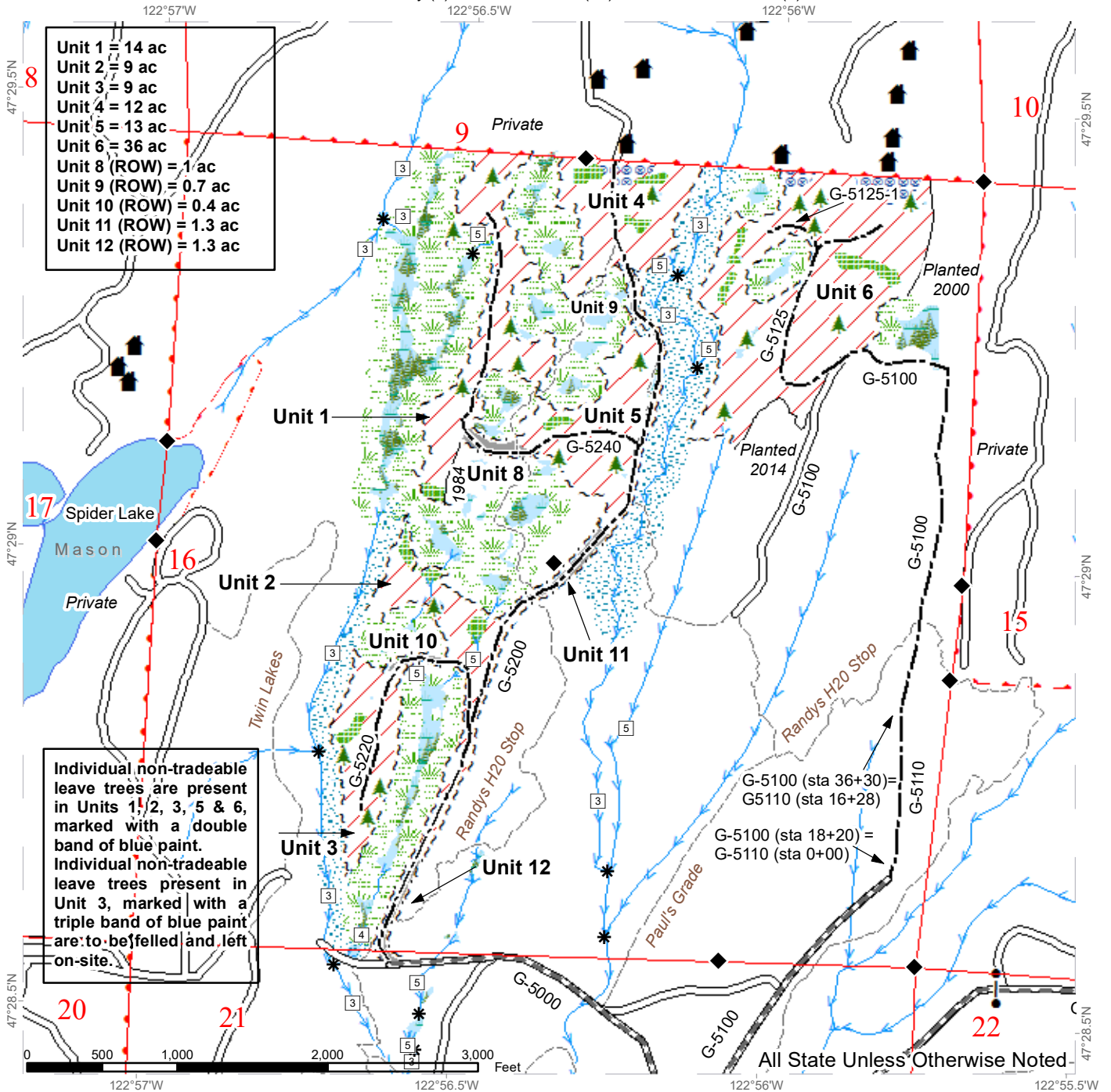
Note to cruisers and appraisers: Please refrain from leaving pink, orange or blue flagging from your cruises in or around the sale area to avoid confusion with DNR's marking. Additionally, for the safety of the public, please remove from roads and trails all string from string boxes used during appraising or cruising this sale.

See map for gate locations. Gate keys may be obtained by contacting the South Puget Sound Region Office at 360-825-1631 or by contacting Austin Haworth at 360-552-8957.

TIMBER SALE MAP

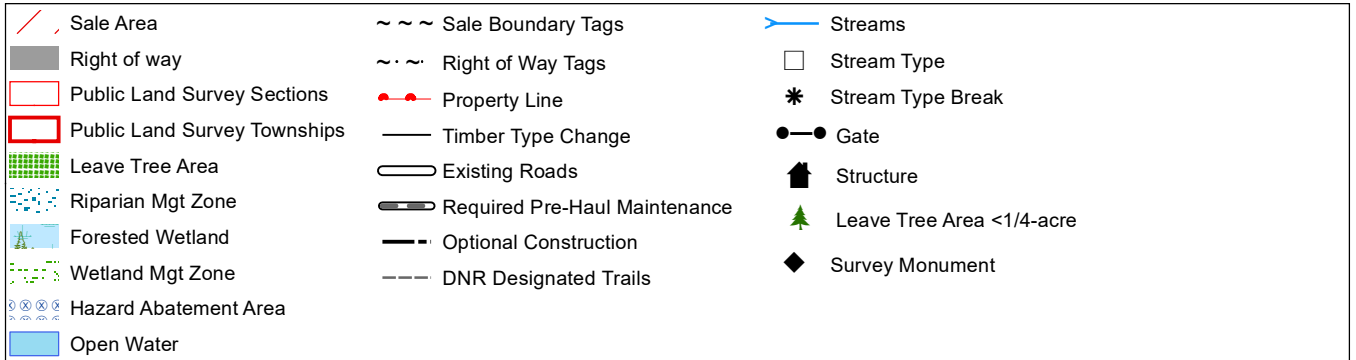
SALE NAME: LITTLE WRANGLER
AGREEMENT #: 30-102107
TOWNSHIP(S): T23R2W
TRUST(S): Common School and Indemnity (3), Scientific School (10), State Forest Transfer (1)

REGION: South Puget Sound Region
COUNTY(S): Mason
ELEVATION RGE: 320-440



Unit 1 = 14 ac
 Unit 2 = 9 ac
 Unit 3 = 9 ac
 Unit 4 = 12 ac
 Unit 5 = 13 ac
 Unit 6 = 36 ac
 Unit 8 (ROW) = 1 ac
 Unit 9 (ROW) = 0.7 ac
 Unit 10 (ROW) = 0.4 ac
 Unit 11 (ROW) = 1.3 ac
 Unit 12 (ROW) = 1.3 ac

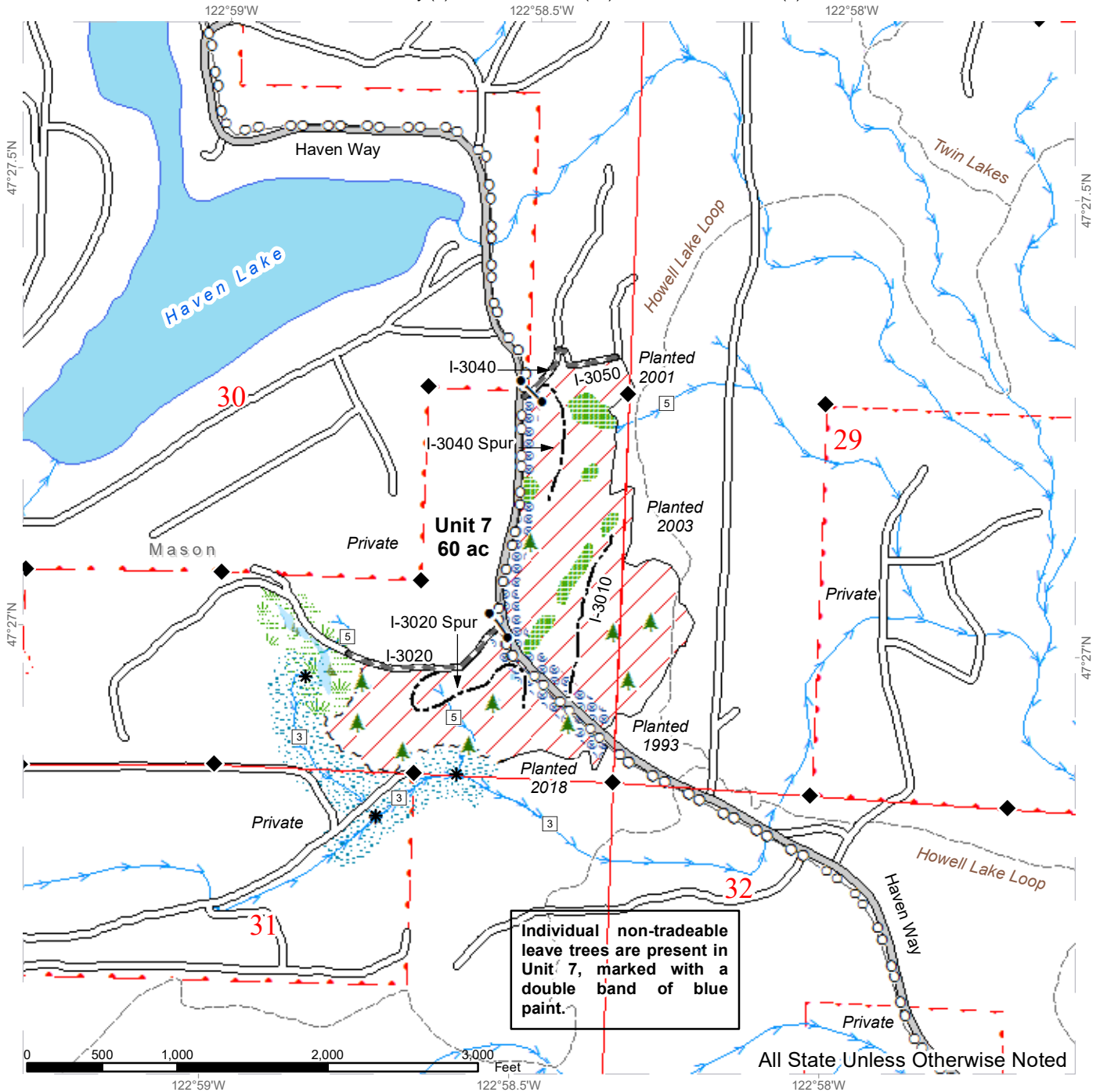
Individual non-tradeable leaf trees are present in Units 1, 2, 3, 5 & 6, marked with a double band of blue paint.
 Individual non-tradeable leaf trees present in Unit 3, marked with a triple band of blue paint are to be felled and left on-site.



TIMBER SALE MAP

SALE NAME: LITTLE WRANGLER
AGREEMENT #: 30-102107
TOWNSHIP(S): T23R2W
TRUST(S): Common School and Indemnity (3), Scientific School (10), State Forest Transfer (1)

REGION: South Puget Sound Region
COUNTY(S): Mason
ELEVATION RGE: 320-440



Individual non-tradeable
 leave trees are present in
 Unit 7, marked with a
 double band of blue
 paint.

All State Unless Otherwise Noted

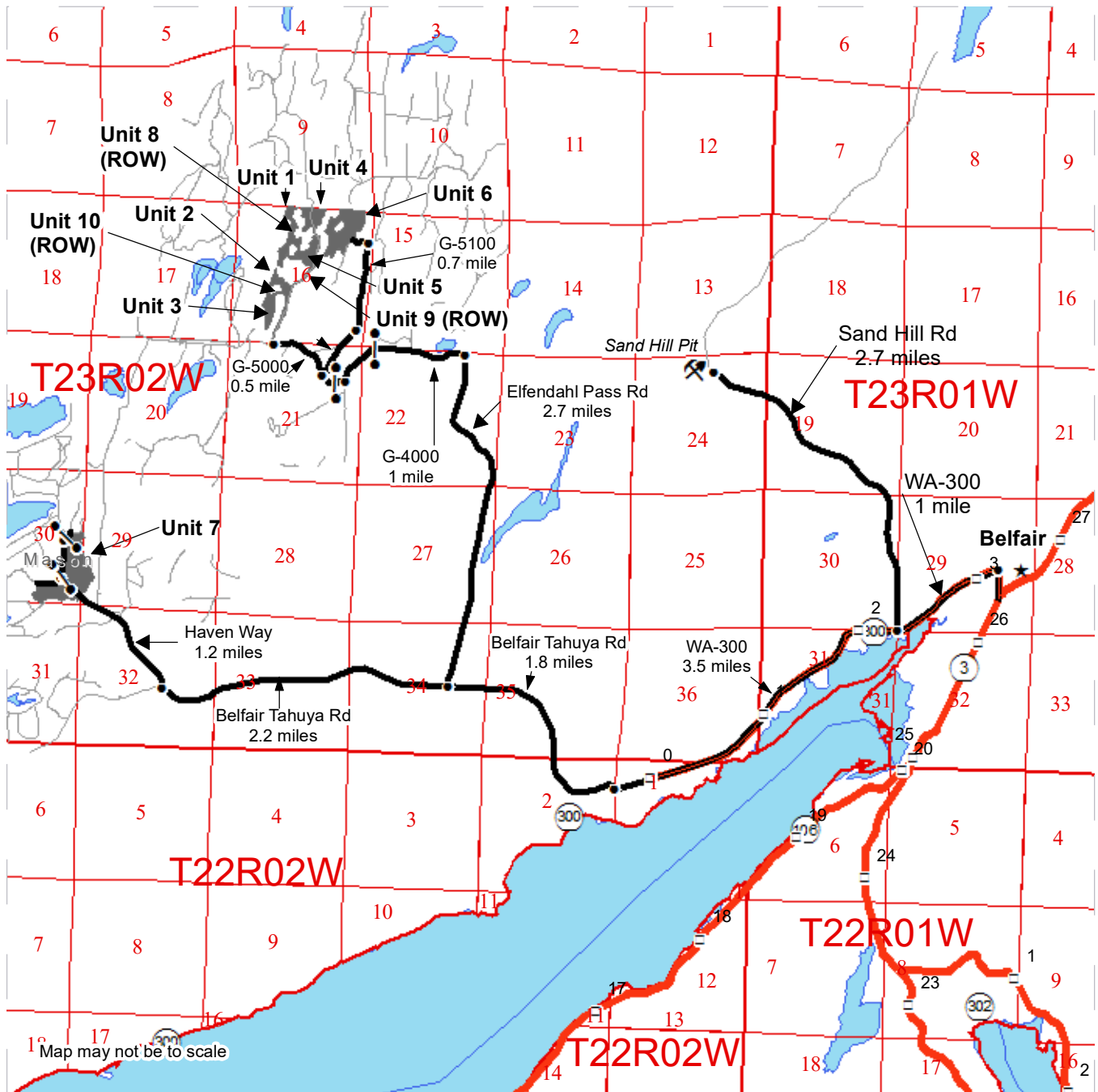
Sale Area	Sale Boundary Tags	Streams
Public Land Survey Sections	Right of Way Tags	Stream Type
Public Land Survey Townships	Property Line	Stream Type Break
Leave Tree Area	Timber Type Change	Gate
Riparian Mgt Zone	County Road	Leave Tree Area <1/4-acre
Forested Wetland	Existing Roads	Survey Monument
Wetland Mgt Zone	Required Pre-Haul Maintenance	
Hazard Abatement Area	Optional Construction	
Open Water	DNR Designated Trails	
	Power Lines	



DRIVING MAP

SALE NAME: LITTLE WRANGLER
AGREEMENT#: 30-102107
TOWNSHIP(S): T23R2W
TRUST(S): Common School and Indemnity (3), Scientific School (10), State Forest Transfer (1)

REGION: South Puget Sound Region
COUNTY(S): Mason
ELEVATION RGE: 320-440



	Timber Sale Unit
	Survey - Township Lines
	Survey - Section Lines
	Haul Route
	Other Road
	Milepost Markers
	Town
	Distance Indicator
	Gate (A786)
	Rock Pit

DRIVING DIRECTIONS:

Units 1-5, 8-10: From Belfair, travel southwest on WA-300 W for 3.5 miles. Turn right onto Belfair Tahuya Rd, follow for 1.8 miles. Turn right onto Elfendahl Pass Rd and follow for 2.7 miles. Turn left onto G-4000 and follow for 1 mile to G-5000. Follow for 0.6 miles to reach units.

Unit 6: From intersection of G-4000 and G-5000, continue along G-5000 for 0.2 miles, turn right onto G-5100. Continue along G-5100 for 0.4 miles to reach unit.

Unit 7: From intersection of Elfendahl Pass Rd and Belfair Tahuya Rd, continue west along Belfair Tahuya Rd for 2.2 miles. Turn right onto Haven Way. Follow for 1.2 miles on the I-3020.

Rock Pit: From Belfair, travel southwest along WA-300 for one mile. Turn right onto Sand Hill and follow for 2.7 miles to reach Sand Hill rock pit on the left.





TIMBER NOTICE OF SALE

SALE NAME: EXTRA CHRISTIE

AGREEMENT NO: 30-104583

AUCTION: August 30, 2023 starting at 10:00 a.m., COUNTY: Skagit Northwest Region Office, Sedro Woolley, WA

SALE LOCATION: Sale located approximately 4 miles southeast of Acme, WA.

PRODUCTS SOLD AND SALE AREA: All timber bounded by white timber sale boundary tags, property lines and the CT-ML Road, except cedar salvage (cedar snags, preexisting dead and down cedar trees and cedar logs), trees marked with blue paint on the bole and root collar, and forest products tagged out by yellow leave tree area tags in Units #1 and #2.

All forest products above located on part(s) of Sections 29 all in Township 37 North, Range 5 East, W.M., containing 18 acres, more or less.

CERTIFICATION: This sale is certified under the Sustainable Forestry Initiative® program Standard (cert no: PwC-SFIFM-513)

ESTIMATED SALE VOLUMES AND QUALITY:

Table with columns: Species, Avg DBH, Ring Count, Total MBF, and MBF by Grade (1P, 2P, 3P, SM, 1S, 2S, 3S, 4S, UT). Rows include Douglas fir, Hemlock, Redcedar, Maple, Cottonwood, and Sale Total.

MINIMUM BID: \$287,000.00 BID METHOD: Sealed Bids

PERFORMANCE SECURITY: \$57,400.00 SALE TYPE: Lump Sum

EXPIRATION DATE: March 31, 2025 ALLOCATION: Export Restricted

BID DEPOSIT: \$28,700.00 or Bid Bond. Said deposit shall constitute an opening bid at the appraised price.

HARVEST METHOD: Cable or tethered equipment (See below for restrictions); Shovel or 6-wheeled-rubber-tired-skidders-with-over-the-tire-tracks-spanning-both-sets-of-rear-tires (See below for restrictions) on sustained slopes 40% or less; self-leveling equipment on sustained slopes 50% or less (See below for restrictions).

Purchaser must obtain prior written approval from the Contract Administrator for areas as to where to utilize tethered, self-leveling or rubber-tired skidder equipment prior to use. If ground disturbance is causing excessive damage, as determined by the Contract Administrator, the equipment shall no longer be authorized. Falling and Yarding will not be permitted from November 1 to March 31 unless authorized in writing by the Contract Administrator (THIS PERTAINS TO GROUND-BASED EQUIPMENT ONLY) to reduce soil damage and erosion.



TIMBER NOTICE OF SALE

ROADS: 3.65 stations of required construction. 3.85 stations of optional construction. 182.65 stations of required prehaul maintenance. 3.85 stations of abandonment, if built.

Rock may be obtained from the following source(s) on State land at no charge to the Purchaser: Christie Pit at station 182+65 of the CT-ML Road.

An estimated total quantity of rock needed for this proposal: 10 cubic yards of riprap and 535 cubic yards of ballast rock.

Road work and the hauling of rock will not be permitted from November 1 to March 31 unless authorized in writing by the Contract Administrator to reduce soil damage and siltation. The hauling of forest products will not be permitted from November 1 to March 31 unless authorized in writing by the Contract Administrator to reduce soil damage and siltation.

ACREAGE DETERMINATION

CRUISE METHOD: Acres determined by GPS traverse. Cruise was conducted via variable plot sample type. See Cruise Narrative for further details. Shapefiles of units are available upon request, and on the DNR website after the BNR meeting in which the sale is presented.

FEES: \$12,478.00 is due on day of sale. \$9.00 per MBF is due upon removal. These are in addition to the bid price.

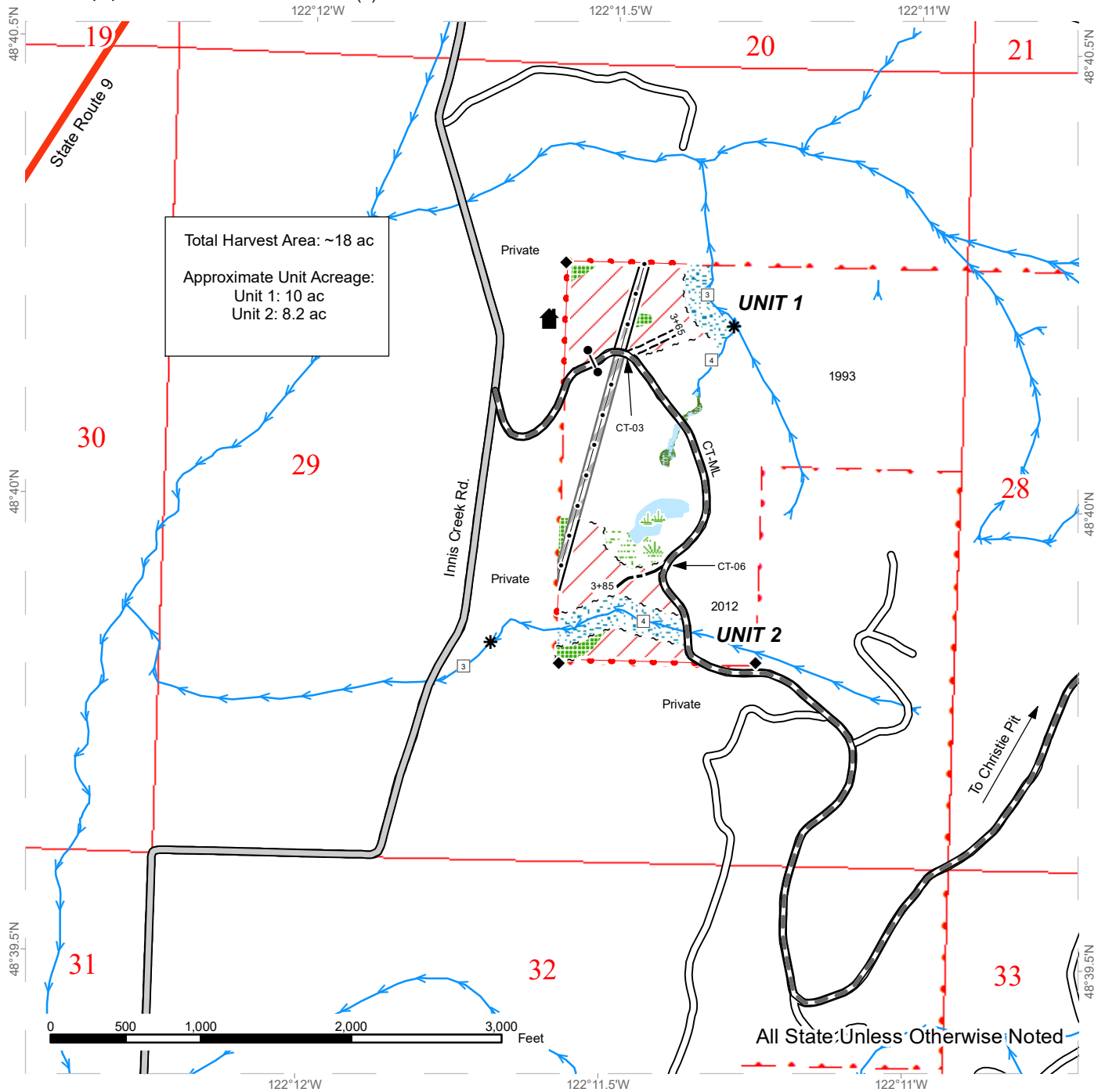
SPECIAL REMARKS:

1. Trees marked with a pink "X" represent the last take tree along property line boundaries.
2. No operations are allowed to occur within the adjacent utility right-of-way. Also, no operations are allowed to restrict vehicular access to the adjacent utility right-of-way from the CT-ML Road.
3. Timber falling and hauling operations are not allowed prior to 7:00 a.m. daily.
4. HQ DF noted within the sale area.
5. Douglas-fir poles were noted within the sale area.

TIMBER SALE MAP

SALE NAME: EXTRA CHRISTIE
AGREEMENT #: None
TOWNSHIP(S): T37R5E
TRUST(S): State Forest Transfer (1)

REGION: Northwest Region
COUNTY(S): Whatcom
ELEVATION RGE: 320-520



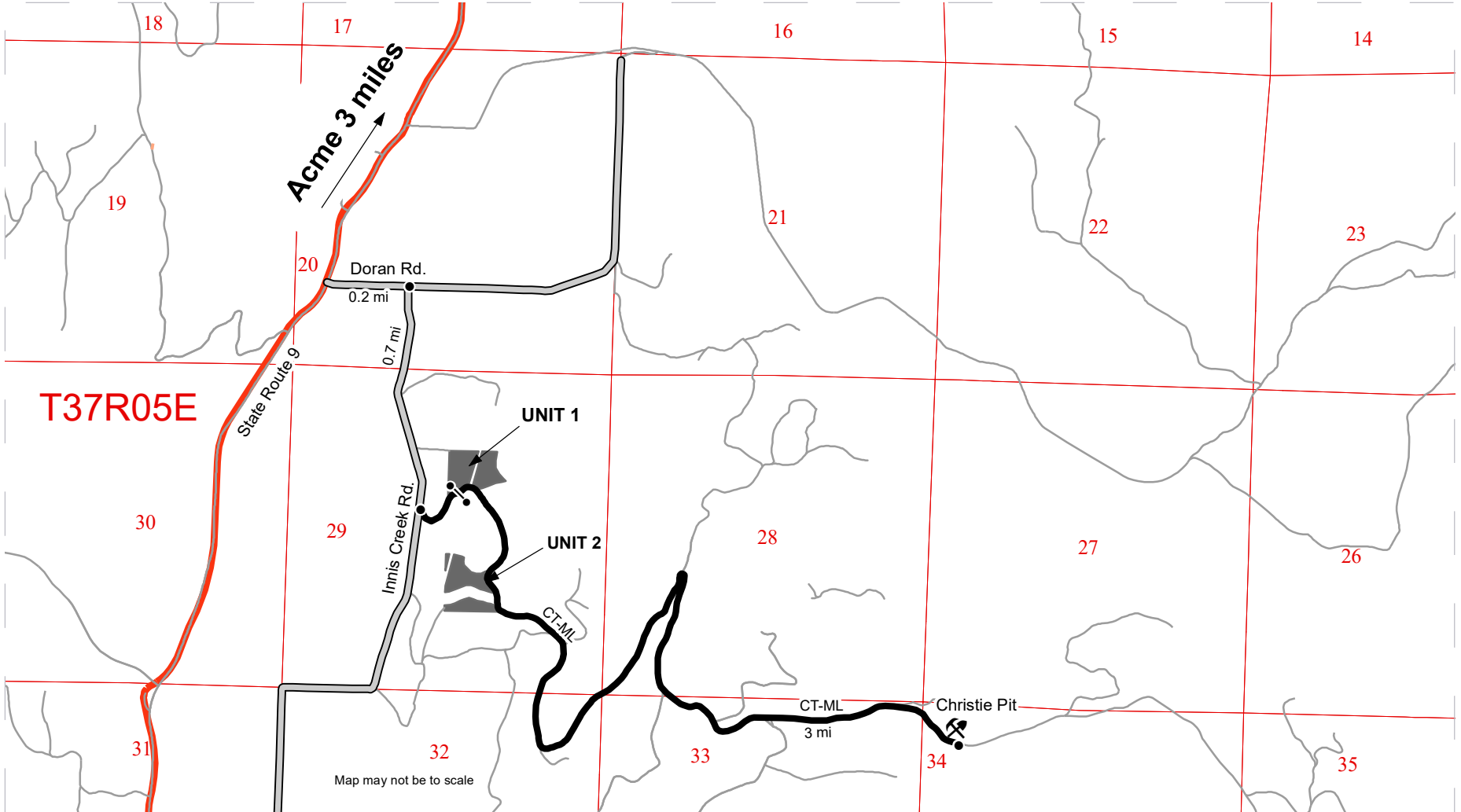
	Sale Area		Sale Boundary Tags		Streams
	Leave Tree Area		Property Line		Stream Type
	Wetlands - Non-forested		Timber Type Change		Stream Type Break
	Forested Wetland		County Road		Structure
	Wetland Mgt Zone		Existing Roads		Gate
	Riparian Mgt Zone		Required Pre-Haul Maintenance		Survey Monument
	Utility Right-of-Way		Required Construction		
	Pipeline		Optional Construction		











DRIVING MAP

SALE NAME: EXTRA CHRISTIE
 AGREEMENT#: 30-104583
 TOWNSHIP(S): T37R5E
 TRUST(S): State Forest Transfer (1)

REGION: Northwest Region
 COUNTY(S): Whatcom
 ELEVATION RGE: 320-520



-  Timber Sale Unit
-  Haul Route
-  Other Road
-  County Road
-  Highway
-  Distance Indicator
-  Gate
-  Rock Pit

DRIVING DIRECTIONS:

From Acme, drive south on State Route 9 for approximately 3 miles and turn left on to Doran Rd. Continue 0.2 miles, then turn right onto Innis Creek Rd. Continue 0.7 miles and turn left onto the CT-ML. Proceed 0.2 miles to Unit 1. Proceed another 0.3 miles on the CT-ML to access Unit 2. From there, proceed another 3 miles to access the Christie Pit.





TIMBER NOTICE OF SALE

SALE NAME: FIDDLEHEAD VRH VDT

AGREEMENT NO: 30-103982

AUCTION: August 31, 2023 starting at 10:00 a.m., **COUNTY:** Skamania
Pacific Cascade Region Office, Castle Rock, WA

SALE LOCATION: Sale located approximately 7 miles Northwest of Stevenson

**PRODUCTS SOLD
AND SALE AREA:**

All timber and timber described in Schedule A, except leave trees bound by yellow "Leave Tree Area" tags, leave trees marked with blue paint, all downed timber greater than 10 inches diameter and snags bounded by the following;

Unit 1 VDT: White "Timber Sale Boundary" tags with pink flagging, CG-2031 road and pink flagging, gaps marked with blue "Special Management Area" tags with pink flagging.

Unit 2 VDT: Pink flagging at timber type change, white "Timber Sale Boundary" tags with pink flagging, gaps marked with blue "Special Management Area" tags with pink flagging.

Unit 3 VRH: Pink flagging at property line posts and timber type change, white "Timber Sale Boundary" tags with pink flagging.

Unit 4 ROW: Orange "Right-of-Way" tags.

Unit 5 ROW: Orange "Right-of-Way" tags.

Unit 6 ROW: Orange "Right-of-Way" tags.

All forest products above located on part(s) of Sections 15 and 22 all in Township 3 North, Range 7 East, W.M., containing 140 acres, more or less.

CERTIFICATION: This sale is certified under the Sustainable Forestry Initiative® program Standard (cert no: PwC-SFIFM-513)

ESTIMATED SALE VOLUMES AND QUALITY:

Species	Avg DBH	Ring Count	Total MBF	Total \$/MBF	MBF by Grade								
					1P	2P	3P	SM	1S	2S	3S	4S	UT
Douglas fir	18.3	7	3,476	\$197.00				96		1,908	1,130	316	26
Maple	12.1		169	\$20.00						11	33	126	
Red alder	8		10	\$20.00								10	
Hemlock	13		1	\$75.00								1	
Sale Total			3,656										

MINIMUM BID: \$197/MBF (est. value \$691,000.00) **BID METHOD:** Sealed Bids

PERFORMANCE SECURITY: \$100,000.00 **SALE TYPE:** MBF Scale

EXPIRATION DATE: October 31, 2026 **ALLOCATION:** Export Restricted



TIMBER NOTICE OF SALE

BIDDABLE SPECIES: Douglas fir

BID DEPOSIT: \$69,100.00 or Bid Bond. Said deposit shall constitute an opening bid at the appraised price.

HARVEST METHOD: Ground based equipment, Cable, and Cable-Assist. This sale is estimated to be 35 percent cable/cable assist harvest systems and 65 percent ground based harvest systems. Ground based yarding equipment will not be permitted on sustained slopes over 40 percent. Cable assist equipment will not be permitted on sustained slopes over 70 percent. For additional harvesting requirements, see Schedule A: Thinning Prescription and Clause H-140 in the contract. Ground Based Yarding will not be permitted from November 1 to April 30 unless authorized in writing by the Contract Administrator.

ROADS: 37.27 stations of optional construction. 74.40 stations of optional reconstruction. 290.58 stations of required prehaul maintenance. 52.03 stations of abandonment, if built. 41.70 stations of decommissioning. Rock used in accordance with the quantities on the ROCK LIST may be obtained from the CG-2037 Pit #2 (Sec. 10 T3N R7E W.M) at no charge to the purchaser. For additional information see Road Plan 6-2. Rock used in accordance with the quantities on the ROCK LIST may be obtained from existing stockpiles; CG-2031D Stockpile at Station 1+32 on CG-2031D and CG-2037 Stockpile at Station 47+01 at no charge to the purchaser. See Road Plan 6-3 for additional information. Rock used in accordance with the quantities on the ROCK LIST may be obtained from any commercial source at the Purchaser's expense. Rock sources are subject to written approval by the Contract Administrator before their use. For additional information see Road Plan 6-5. Purchaser shall conduct rock source development in accordance with Rock Source Development Plan. See Road Plan 6-10 for additional information.

Load Ratings: CG-2030 at Rock Creek Bridge are U80 (wheeled machines and log trucks) = 80 ton load limit with controlled crossing requirements. L90 (tracked machine) = 70 ton load limit with controlled crossing requirements. Controlled crossing requirements: maximum speed 5 mph, vehicle to be centered between girders.

Road construction and reconstruction, pre-haul maintenance and CG-2031 Stockpile use will be restricted from October 1 to April 30 on roads CG-2030 (Station 0+00 to 135+00), CG-2030, CG-2031A, CG-2031A1, CG-2031C, CG-2031C1 and CG-2031D. See Road Plan 1-25 for additional information.

Pre-haul maintenance, rock source work and CG-2037 Stockpile use will be restricted from March 1 to August 31 on roads CG-2031 (station 135+00 to 173+95 and CG-2037. See Road Plan 1-25 and Contract Clause H-250 for additional information. The hauling of forest products will not be permitted from November 1 to April 30 unless authorized in writing by the Contract Administrator.

ACREAGE DETERMINATION

CRUISE METHOD: The sale acres were determined by GPS delineation. Cruise was completed using variable plot cruise methods.

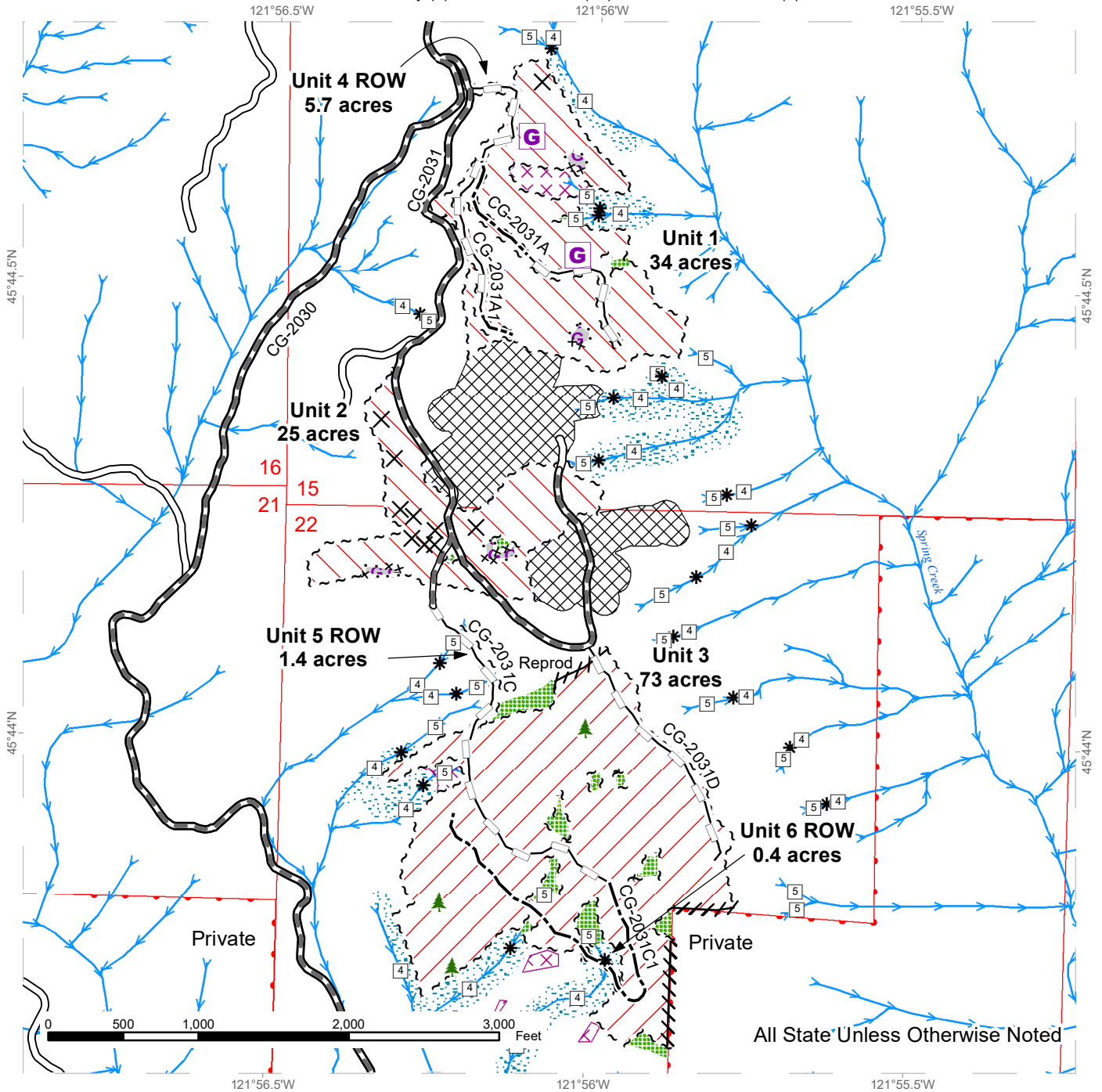
FEES: \$62,152.00 is due on day of sale. \$9.00 per MBF is due upon removal. These are in addition to the bid price.

SPECIAL REMARKS: This sale contains approximately 96 MBF DF Special Mill, 331 MBF High Quality DF 2 Saw, 219 MBF High Quality DF 3 Saw. See Cruise for additional information.

TIMBER SALE MAP

SALE NAME: FIDDLEHEAD VDT VRH
AGREEMENT #: 30-103982
TOWNSHIP(S): T3R7E
TRUST(S): Common School and Indemnity (3), Scientific School (10), State Forest Transfer (1)

REGION: Pacific Cascade Region
COUNTY(S): Skamania
ELEVATION RGE: 800-1800



All State Unless Otherwise Noted

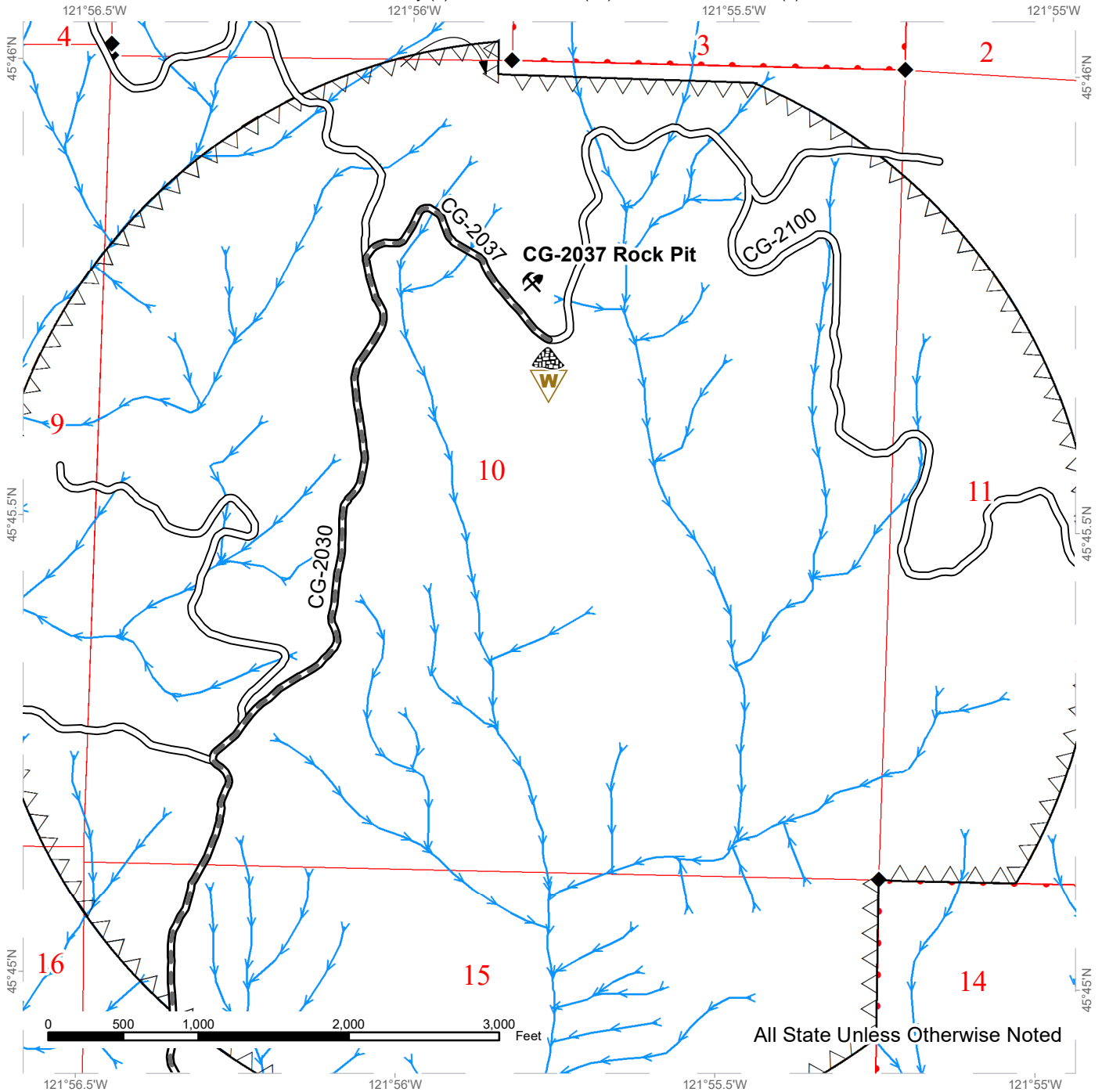
Variable Retention Harvest	Sale Boundary Tags	Stream Type
Variable Density Thinning	Special Mgmt Area	Stream Type Break
Talus and Buffer	Leave Tree Tags	Streams
Gap	Right of Way Tags	Gap
Leave Tree Area	Property Line	Take Tree
Riparian Mgt Zone	Flag Line	Leave Trees
Potentially Unstable Slopes	Existing Roads	
	Required Pre-Haul Maintenance	
	Optional Construction	
	Optional Reconstruction	



TIMBER SALE MAP

SALE NAME: FIDDLEHEAD VDT VRH
AGREEMENT #: 30-103982
TOWNSHIP(S): T3R7E
TRUST(S): Common School and Indemnity (3), Scientific School (10), State Forest Transfer (1)

REGION: Pacific Cascade Region
COUNTY(S): Skamania
ELEVATION RGE: 800-1800



All State Unless Otherwise Noted

	Timing Restriction		Stream Type
	Existing Roads		Stream Type Break
	Required Pre-Haul Maintenance		Streams
	Rock Pit		Survey Monument
	Stockpile		Rock Pit
	Waste Area		Stockpile



DRIVING MAP

SALE NAME: FIDDLEHEAD VDT VRH
AGREEMENT#: 30-103982
TOWNSHIP(S): T3R7E
TRUST(S): Common School and Indemnity (3), Scientific School (10), State Forest Transfer (1)

REGION: Pacific Cascade Region
COUNTY(S): Skamania
ELEVATION RGE: 800-1800



Map may not be to scale

	Timber Sale Unit
	Haul Route
	Other Road
	Distance Indicator
	Bridge
	Timing Restriction
	Milepost Markers

DRIVING DIRECTIONS:

From Highway 14, near mile marker 43, turn north onto SW Rock Creek Drive and travel for 0.3 miles.
 Turn left on Foster Creek Road, which turns into Ryan Allen Road and travel for 0.8 miles.
 Turn left on Red Bluff Road and travel for 0.3 miles.
 At the fork, veer right on the CG-2000 and travel for 2.2 miles.
 Turn right into the CG-2030 and travel for 2.5 miles.
 Turn right into the CG-2031 and travel for 0.2 miles to access Unit 1.
 Continue on the CG-2031 to access Units 2 and 3.
 To access the CG-2037 Rock Pit, continue on the CG-2030, past the CG-2031, for 1.3 miles.
 Turn right on the CG-2037 and continue for 0.3 miles.





TIMBER NOTICE OF SALE

SALE NAME: BLACK HOLE SALVAGE

AGREEMENT NO: 30-104702

AUCTION: August 31, 2023 starting at 10:00 a.m., **COUNTY:** Skamania
Pacific Cascade Region Office, Castle Rock, WA

SALE LOCATION: Sale located approximately 32 miles east of Woodland, WA

PRODUCTS SOLD AND SALE AREA: All timber, except leave trees bound by yellow "Leave Tree Area" tags, leave trees marked with blue paint, leave trees marked with yellow paint and all down timber existing 5 years prior to the day of sale or 36 inches diameter bounded by the following:

Unit 1, pink flagging, white "Timber Sale Boundary" tags with pink flagging, yellow "Leave Tree Area" tags with pink flagging, timber type change, and the S-2050;

Unit 2 ROW and 3 ROW, orange "Right of Way" tags;

All forest products above located on part(s) of Sections 29, 30 and 31 all in Township 6 North, Range 5 East, W.M., containing 86 acres, more or less.

CERTIFICATION: This sale is certified under the Sustainable Forestry Initiative® program Standard (cert no: PwC-SFIFM-513)

ESTIMATED SALE VOLUMES AND QUALITY:

Species	Avg DBH	Ring Count	Total MBF	Total \$/MBF	MBF by Grade								
					1P	2P	3P	SM	1S	2S	3S	4S	UT
Douglas fir	25.8	9	2,925	\$326.00				429		2,054	387	55	1
Hemlock	18.3		844	\$103.00						582	180	59	22
Maple	17.6		20	\$20.00						18			2
Sale Total			3,789										

MINIMUM BID: \$326/MBF (est. value \$1,041,000.00) **BID METHOD:** Sealed Bids

PERFORMANCE SECURITY: \$100,000.00 **SALE TYPE:** MBF Scale

EXPIRATION DATE: October 31, 2024 **ALLOCATION:** Export Restricted

BIDDABLE SPECIES: Douglas fir

BID DEPOSIT: \$104,100.00 or Bid Bond. Said deposit shall constitute an opening bid at the appraised price.

HARVEST METHOD: Shovel, and Track skidder. Estimated 100 percent shovel and tracked skidder. Ground Based Yarding will not be permitted from October 1 to April 30 unless authorized in writing by the Contract Administrator.



TIMBER NOTICE OF SALE

ROADS: 36.54 stations of optional construction. 76.64 stations of required prehaul maintenance. Rock used in accordance with the quantities on the ROCK LIST may be obtained from the following source on state land at no charge to the Purchaser: Souixon Pit Sec 20, T6N, R5E W.M.. Purchaser shall obtain written approval from the Contract Administrator for the use of material from any other source. Rock used in accordance with the quantities on the ROCK LIST may be obtained from any commercial source at the Purchaser's expense. Rock sources are subject to written approval by the Contract Administrator before their use. See Road Plan for further details. All road work will not be permitted from October 1 to April 30 unless authorized in writing by the Contract Administrator. The hauling of forest products will not be permitted from October 1 to April 30 unless authorized in writing by the Contract Administrator.

ACREAGE DETERMINATION

CRUISE METHOD: The sale acres were determined by GPS. The sale area was cruised using a variable plot cruise method.

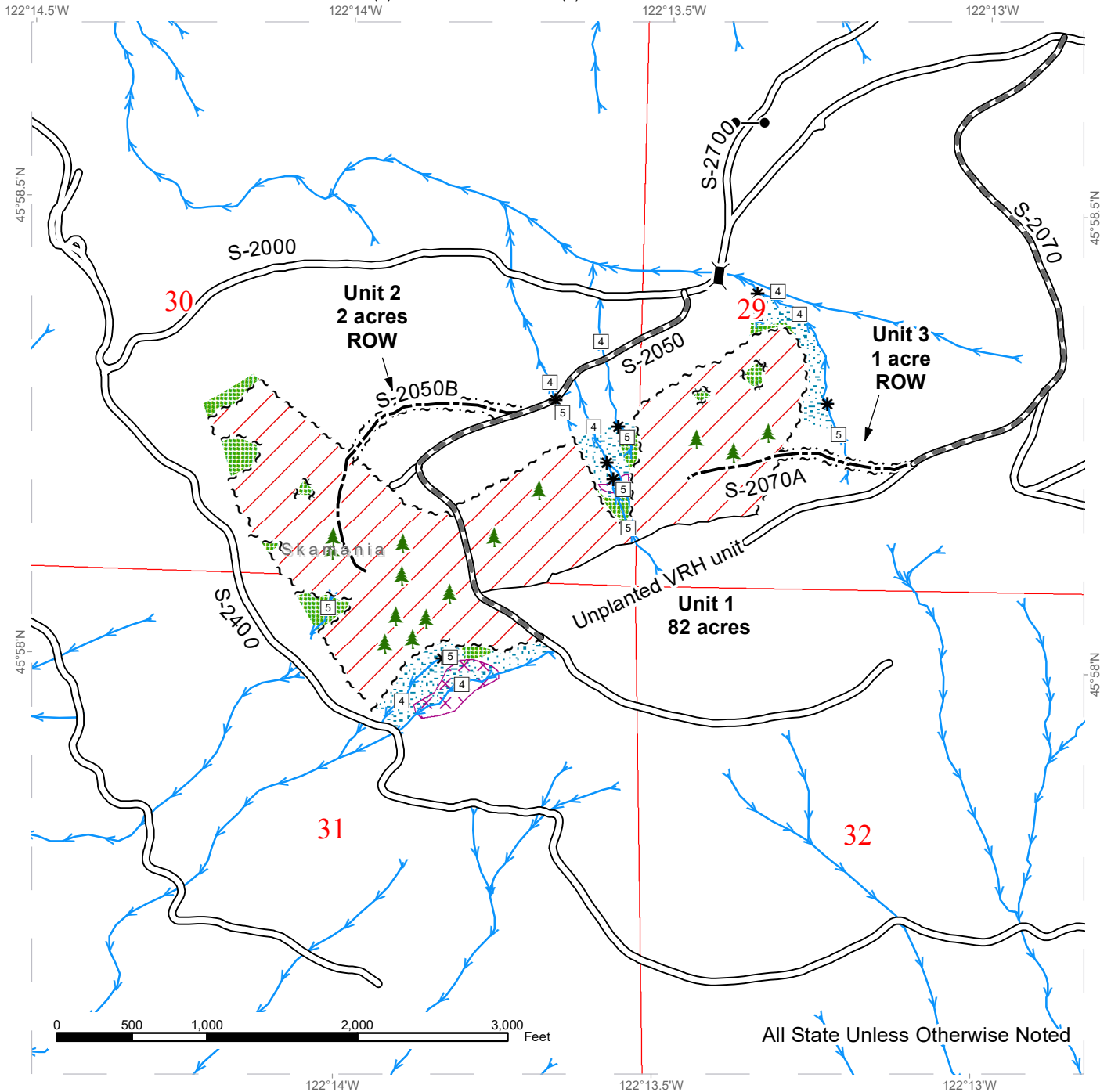
FEES: \$64,413.00 is due on day of sale. \$9.00 per MBF is due upon removal. These are in addition to the bid price.

SPECIAL REMARKS: Purchaser must obtain Overloaded Permit from US Forest Service to drive overloaded vehicles over USFS 54 Canyon Creek Bridge. Overloaded vehicles are considered to be anything over 80,000 pounds.

TIMBER SALE MAP

SALE NAME: BLACK HOLE SALVAGE
AGREEMENT #: 30-104702
TOWNSHIP(S): T6R5E
TRUST(S): State Forest Purchase (2), State Forest Transfer (1)

REGION: Pacific Cascade Region
COUNTY(S): Skamania
ELEVATION RGE: 1960-2600

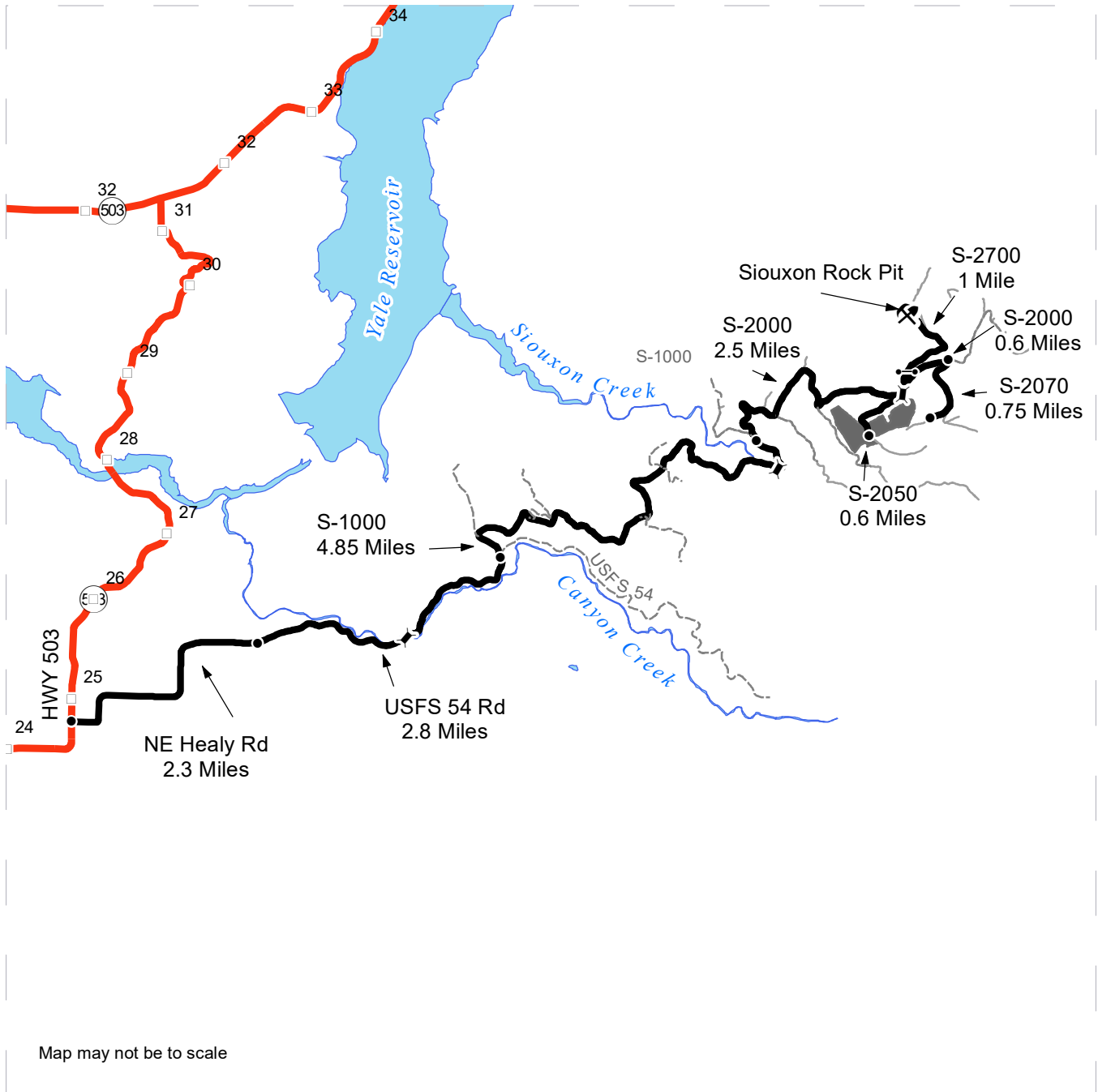







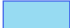

Variable Retention Harvest	Sale Boundary Tags	Bridge
Leave Tree Area	Leave Tree Tags	Gate (PCP1-1)
Riparian Mgt Zone	Right of Way Tags	Leave Tree Area <1/4-acre
Potentially Unstable Slopes	Timber Type Change	
Existing Roads	Streams	
Required Pre-Haul Maintenance	Stream Type	
Optional Construction	Stream Type Break	

DRIVING MAP

SALE NAME: BLACK HOLE SALVAGE
AGREEMENT#: 30-104702
TOWNSHIP(S): T6R5E
TRUST(S): State Forest Purchase (2), State Forest Transfer (1)

REGION: Pacific Cascade Region
COUNTY(S): Skamania
ELEVATION RGE: 1960-2600



<ul style="list-style-type: none">  Timber Sale Unit  Haul Route  Other Road  View Only Route  Highway  Open Water  Distance Indicator(s) 	<p><u>DRIVING DIRECTIONS:</u></p> <p>From Highway 503, turn east onto NE Healy Rd. Continue on NE Healy Rd for 2.3 miles. NE Healy Rd becomes USFS 54 Rd. Travel on USFS 54 Rd for 2.8 miles. Turn left onto the S-1000. Travel on the S-1000 for 4.85 miles. Keep right at the fork onto the S-2000. Travel on the S-2000 for 2.5 miles. To take you to the S-2050B Rd, turn right onto the S-2050 and travel for 0.6 miles. To travel to the S-2070A Rd, do not turn right and continue down the S-2000 for an additional 0.6 miles. Turn right onto the S-2070 and travel for 0.75 miles. To the Siouxon Rock Pit, continue on the S-2000 for 0.1 miles and keep left at the fork onto the S-2700. Drive through the gate and follow the S-2700 road for 1 mile.</p>
---	--





TIMBER NOTICE OF SALE

SALE NAME: HOG WILD VRH VDT

AGREEMENT NO: 30-104148

AUCTION: August 30, 2023 starting at 10:00 a.m., **COUNTY:** Snohomish
Northwest Region Office, Sedro Woolley, WA

SALE LOCATION: Sale located approximately 22 miles southeast of Granite Falls, WA.

**PRODUCTS SOLD
AND SALE AREA:**

All timber bounded by white timber sale boundary tags, adjacent young stands, rock pit area, and the CH-ML and CH-40 roads, except cedar salvage (cedar snags, preexisting dead and down cedar trees and cedar logs), trees marked with blue paint on the bole and root collar, forest products tagged out by blue special management tags (WMZs/RMZs), and forest products tagged out by yellow leave tree area tags in Unit #1 (collectively labeled 1A and 1B).

All timber bounded by white timber sale boundary tags, property lines, adjacent young stands, roads (the CH-64, CH-6401, CH-ML) and old grades, except cedar salvage (cedar snags, preexisting dead and down cedar trees and cedar logs), trees marked with blue paint on the bole and root collar, forest products tagged out by blue special management tags (WMZs/RMZs), and forest products tagged out by yellow leave tree area tags in Unit #2 (collectively labeled 2A, 2B, 2D, 2E, 2F, 2G, 2H, 2I, 2J, 2L and 2M).

All timber bounded by white timber sale boundary tags and the CH-ML Road, except cedar salvage (cedar snags, preexisting dead and down cedar trees and cedar logs), trees marked with blue paint on the bole and root collar, and forest products tagged out by yellow leave tree area tags in Unit #3.

All timber bounded by white timber sale boundary tags, adjacent young stands, the CH-ML and property lines, except cedar salvage (cedar snags, preexisting dead and down cedar trees and cedar logs), trees marked with blue paint on the bole and root collar, and forest products tagged out by yellow leave tree area tags in Unit #4.

All timber as described for removal in Schedule B located in the RMZ/WMZ thinning areas (beyond the blue special management tags up to the white timber sale boundary tags) within Units #1 and #2 (labeled 1C, 1D, 2C, 2K, and 2N).

All timber bounded by orange right-of-way tags or orange right-of-way tags and the CH-64 road, of roads to be constructed, except that title to the timber within the right-of-way associated with areas of road construction is not conveyed to the Purchaser unless the road segment is actually constructed, except as described for removal in Schedule B.

All forest products above located on part(s) of Sections 20, 21 and 22 all in Township 29 North, Range 8 East, W.M., containing 163 acres, more or less.

CERTIFICATION: This sale is certified under the Sustainable Forestry Initiative® program Standard (cert no: PwC-SFIFM-513)

ESTIMATED SALE VOLUMES AND QUALITY:

Species	Avg Ring DBH Count	Total MBF	MBF by Grade								
			1P	2P	3P	SM	1S	2S	3S	4S	UT
Hemlock	17.6	3,581						1,452	1,814	229	86



TIMBER NOTICE OF SALE

Table with 10 columns: Species, Volume (cu ft), Area (acres), Diameter (inches), Length (ft), Weight (lb), Volume (cu ft), Area (acres), Diameter (inches), Length (ft). Rows include Douglas fir, Silver fir, Redcedar, Cottonwood, Red alder, and Sale Total.

MINIMUM BID: \$1,174,000.00 BID METHOD: Sealed Bids
PERFORMANCE SECURITY: \$100,000.00 SALE TYPE: Lump Sum
EXPIRATION DATE: March 31, 2026 ALLOCATION: Export Restricted

BID DEPOSIT: \$117,400.00 or Bid Bond. Said deposit shall constitute an opening bid at the appraised price.

HARVEST METHOD: Cable; shovel on sustained slopes 40% or less; self-leveling harvester equipment on sustained slopes 55% or less; tethered equipment may be utilized (See below for restrictions); also, a feller-buncher may be utilized on sustained slopes 40% or less.

Purchaser must obtain prior written approval from the Contract Administrator for areas as to where to utilize tethered equipment prior to use. If ground disturbance is causing excessive damage, as determined by the Contract Administrator, the equipment will no longer be authorized. Falling and Yarding will not be permitted from November 1 to March 31 unless authorized in writing by the Contract Administrator (THIS PERTAINS TO GROUND-BASED EQUIPMENT ONLY) to reduce soil damage and erosion.

Falling and yarding in RMZ and WMZ thinning areas shall not be permitted during the bark slippage season unless the Purchaser provides a written plan outlining mitigation measures and the plan is pre-authorized in writing by the Contract Administrator. This season is estimated to run from April 1 to July 15 but may vary depending on weather conditions.

ROADS: 32.70 stations of optional construction. 44.10 stations of optional reconstruction. 291.20 stations of required prehaul maintenance. 702.23 stations of optional prehaul maintenance.

Rock may be obtained from the following source(s) on State land at no charge to the Purchaser: Chaplain Pit at station 258+06 of the CH-ML Road. Pignuckle Pit at Station 405+18 of the CH-ML Road. In addition, existing stockpiles of Light and Heavy riprap are available for use within both Chaplain Pit and Pignuckle Pit.

Development of an existing rock source will involve drilling, shooting, and processing.

An estimated total quantity of rock needed for this proposal: 235 cubic yards of riprap and 5,940 cubic yards of ballast rock.

Road work and the hauling of rock will not be permitted from November 1 to March 31 unless authorized in writing by the Contract Administrator to reduce soil damage and siltation. The hauling of forest products will not be permitted from November 1 to March 31 unless authorized in writing by the Contract Administrator to reduce soil damage and siltation.



TIMBER NOTICE OF SALE

ACREAGE DETERMINATION

CRUISE METHOD: Acres determined by GPS/GIS traverse for units and length x width calculation for right-of-way. Cruise was conducted via variable plot sample type, as well as fixed plot, and strip for the right-of-ways. Cruise acres are based on FMA (Forest Management Activity) acres including leave tree areas. Leave tree volume is not included in the cruise. See Cruise Narrative for further details. Shapefiles of units are available upon request, and on the DNR website after the BNR meeting in which the sale is presented.

FEES: \$106,964.00 is due on day of sale. \$9.00 per MBF is due upon removal. These are in addition to the bid price.

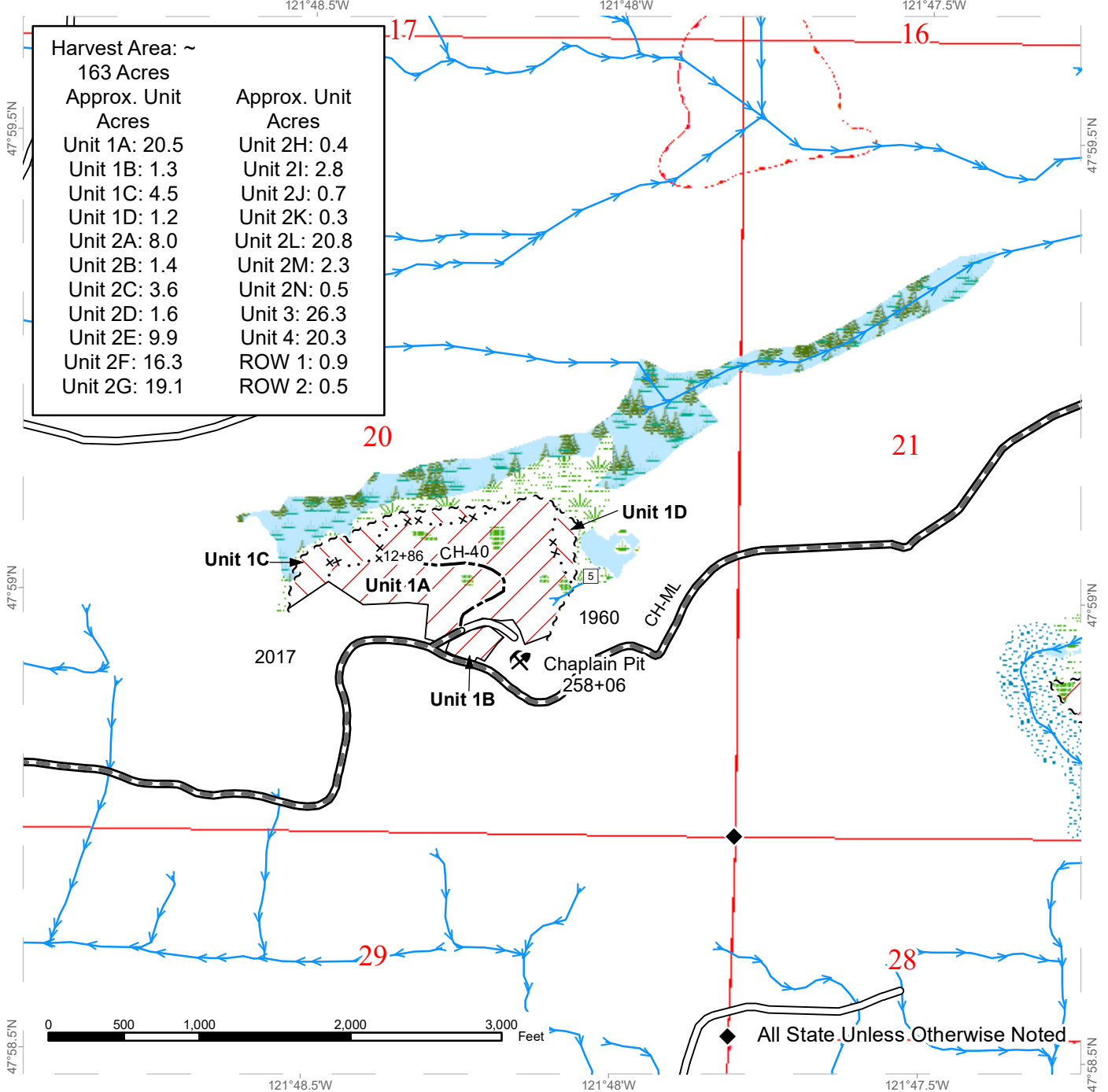
SPECIAL REMARKS:

1. Trees marked with two bands of yellow paint and a red "T" represent the last take tree along property line boundaries and are to be felled into the sale area. See H-90, H-141, and timber sale map for details.
2. Outer boundary of harvest area in RMZ/WMZ thinning areas is demarcated with blue special management tags within the sale area.
3. HQ DF noted within the sale area. See cruise for further details.
4. Cedar salvage is not permitted within this sale. Cedar salvage will be offered within the harvest units under a separate contract at a later date.
5. Cable logging will occur in Units 3 and 4. Tail hold restrictions apply, see H-140.
6. Intermediate supports may be necessary. Yarding profiles are available upon request.
7. Access to the timber sale area shall be via the EK-ML as depicted on the Driving Map.
8. Purchaser shall complete required pre-haul maintenance on the CH-ML from station 106+93 to 107+18.

TIMBER SALE MAP

SALE NAME: HOG WILD
AGREEMENT #: 30-104148
TOWNSHIP(S): T29R8E
TRUST(S): Capitol Grant (7), Charitable/Educational/Penal & Reformatory Instit. (6), Common School and Indemnity (3), Scientific School (10), State Forest Transfer (1)

REGION: Northwest Region
COUNTY(S): Snohomish
ELEVATION RGE: 1320-2280



Variable Retention Harvest	Sale Boundary Tags	Streams
Variable Density Thinning	Special Mgmt Area	Stream Type
Wetlands - Non-forested	Right of Way Tags	Stream Type Break
Leave Tree Area	Property Line	Survey Monument
Riparian Mgt Zone	Timber Type Change	Rock Pit
Forested Wetland	Existing Roads	
Wetland Mgt Zone	Required Pre-Haul Maintenance	
	Optional Construction	



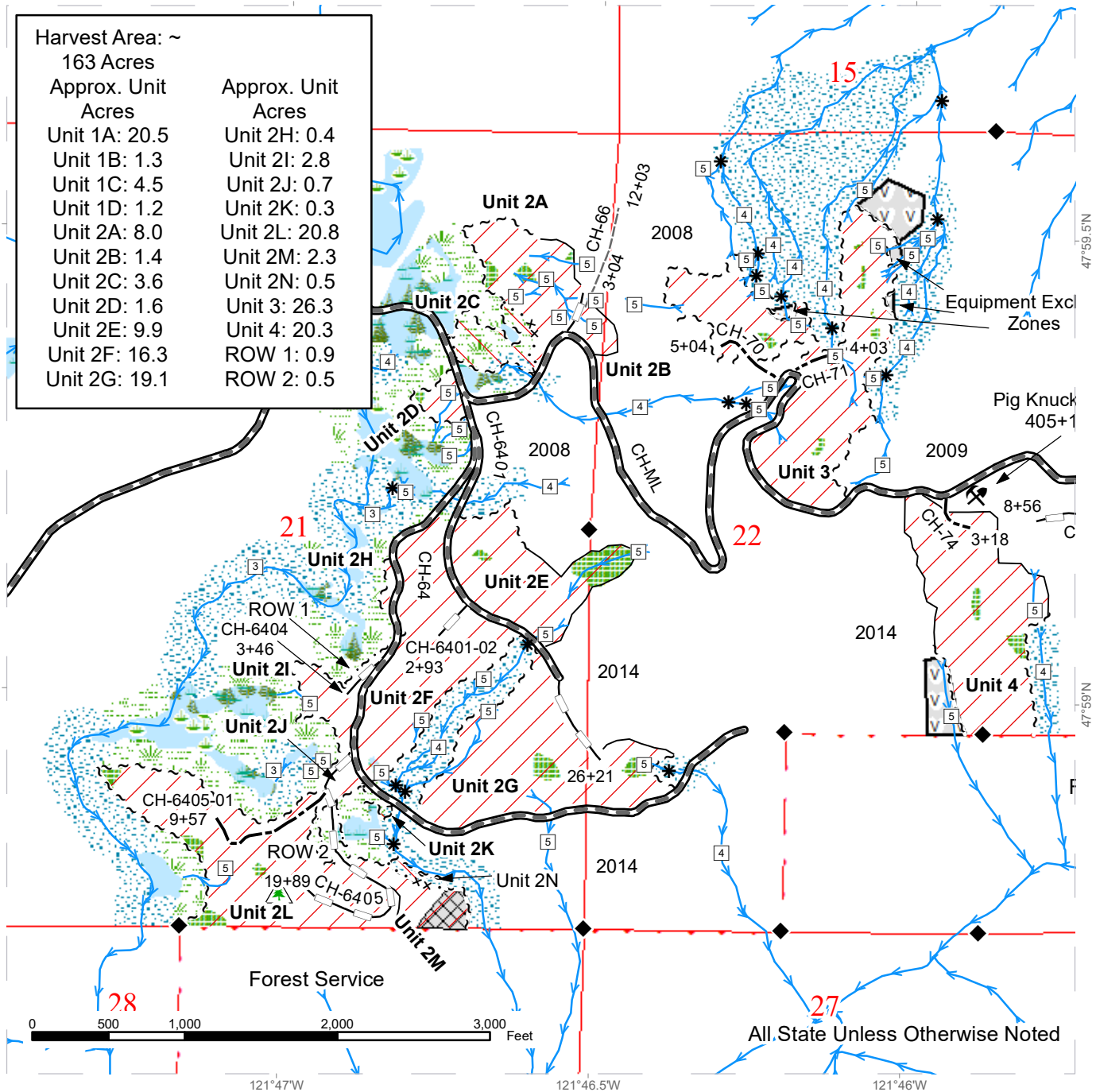
TIMBER SALE MAP

SALE NAME: HOG WILD
AGREEMENT #: 30-104148
TOWNSHIP(S): T29R8E
TRUST(S): Capitol Grant (7), Charitable/Educational/Penal & Reformatory Instit. (6), Common School and Indemnity (3), Scientific School (10), State Forest Transfer (1)

REGION: Northwest Region
COUNTY(S): Snohomish
ELEVATION RGE: 1320-2280

Harvest Area: ~
163 Acres

Approx. Unit Acres	Approx. Unit Acres
Unit 1A: 20.5	Unit 2H: 0.4
Unit 1B: 1.3	Unit 2I: 2.8
Unit 1C: 4.5	Unit 2J: 0.7
Unit 1D: 1.2	Unit 2K: 0.3
Unit 2A: 8.0	Unit 2L: 20.8
Unit 2B: 1.4	Unit 2M: 2.3
Unit 2C: 3.6	Unit 2N: 0.5
Unit 2D: 1.6	Unit 3: 26.3
Unit 2E: 9.9	Unit 4: 20.3
Unit 2F: 16.3	ROW 1: 0.9
Unit 2G: 19.1	ROW 2: 0.5



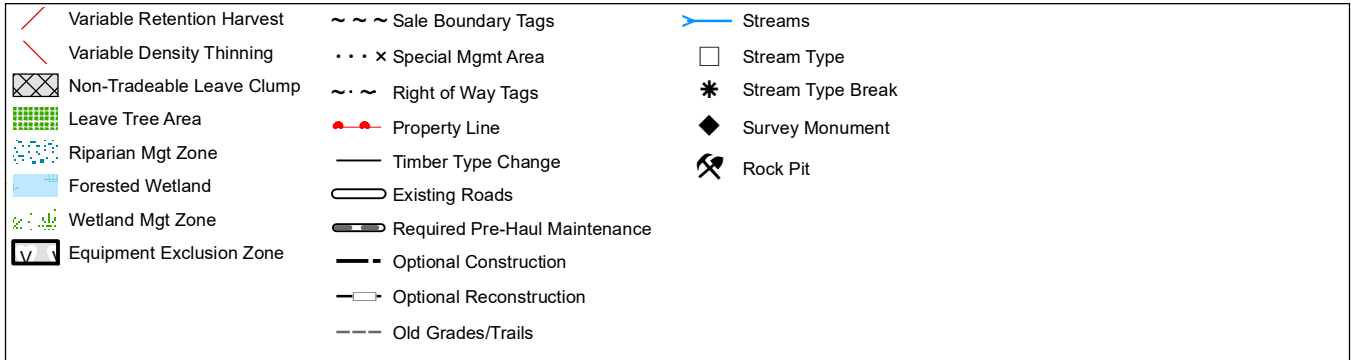
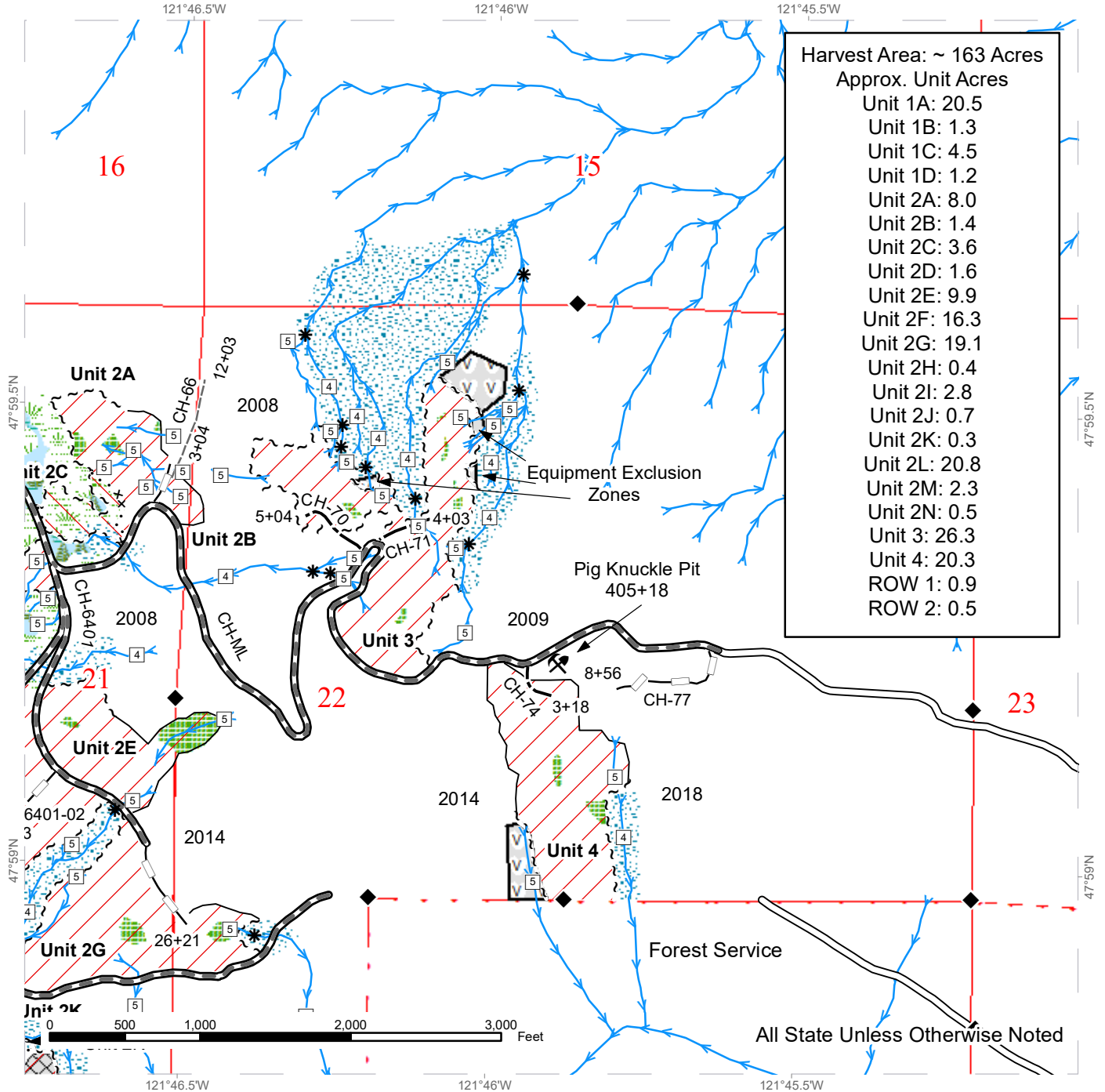
	Variable Retention Harvest		Sale Boundary Tags		Streams
	Variable Density Thinning		Special Mgmt Area		Stream Type
	Wetlands - Non-forested		Right of Way Tags		Stream Type Break
	Non-Tradeable Leave Clump		Property Line		Survey Monument
	Leave Tree Area		Timber Type Change		Non-Tradeable Leave Trees
	Riparian Mgt Zone		Existing Roads		Rock Pit
	Forested Wetland		Required Pre-Haul Maintenance		
	Wetland Mgt Zone		Optional Construction		
	Equipment Exclusion Zone		Optional Reconstruction		
			Old Grades/Trails		



TIMBER SALE MAP

SALE NAME: HOG WILD
AGREEMENT #: 30-104148
TOWNSHIP(S): T29R8E
TRUST(S): Capitol Grant (7), Charitable/Educational/Penal & Reformatory Instit. (6), Common School and Indemnity (3), Scientific School (10), State Forest Transfer (1)

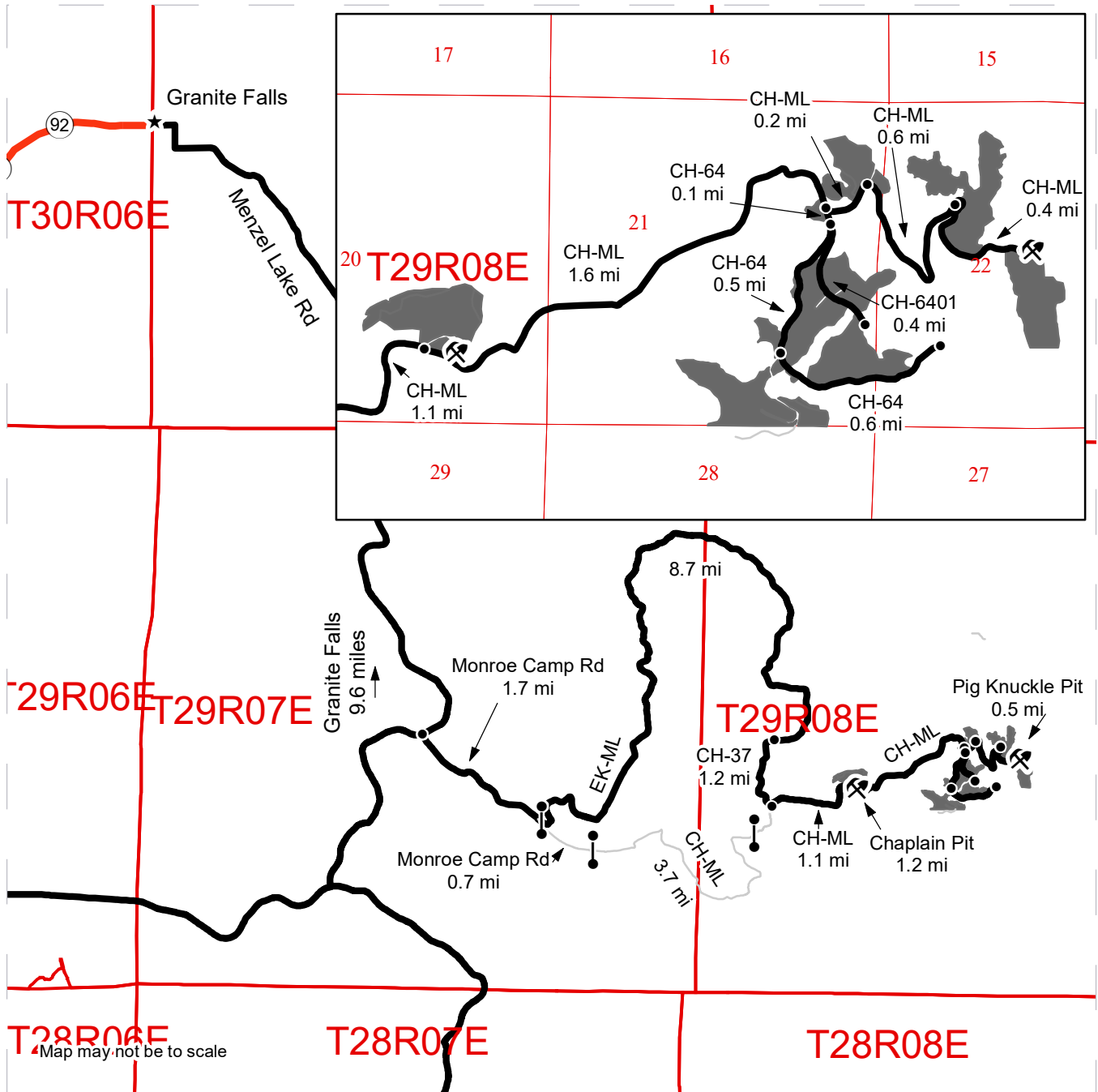
REGION: Northwest Region
COUNTY(S): Snohomish
ELEVATION RGE: 1320-2280



DRIVING MAP

SALE NAME: HOG WILD
 AGREEMENT#: 30-104148
 TOWNSHIP(S): T29R8E
 TRUST(S): Capitol Grant (7), Charitable/Educational/Penal & Reformatory Instit. (6), Common School and Indemnity (3), Scientific School (10), State Forest Transfer (1)

REGION: Northwest Region
 COUNTY(S): Snohomish
 ELEVATION RGE: 1320-2280



Map may not be to scale

- Timber Sale Unit
- Haul Route
- Optional RUP Route
- Distance Indicator
- Gate (F1-3)
- Rock Pit
- Public Land Survey Townships

DRIVING DIRECTIONS:

From Granite Falls follow Menzel Lake Rd 9.6 miles to the intersection with Monroe Camp Rd. Turn left onto Monroe Camp Rd and follow it for 1.7 miles to the EK-ML gate on the left. F1-3 key required. Follow the EK-ML for 8.7 miles, then turn left onto the CH-37. Follow the CH-37 for 1.2 miles then turn left onto the CH-ML. Continue on the CH-ML for 1.1 miles, unit 1 will be on the left at the rock pit. Continue following the CH-ML for 1.6 miles to the junction with the CH-64 and the northern sub-units of unit 2. Stay on the CH-ML for 0.6 mile to reach unit 3 on the left and an additional 0.4 mile to reach unit 4 on the right. From the junction of the CH-ML and CH-64 continue south on the CH-64 for 0.1 mile to reach the junction with the CH-6401. The CH-64 (1.1 miles) and CH-6401 (0.4 mile) can be used to access the southern sub-units of unit 2.





TIMBER NOTICE OF SALE

SALE NAME: ALDERAAN

AGREEMENT NO: 30-104353

AUCTION: August 30, 2023 starting at 10:00 a.m., Olympic Region Office, Forks, WA

COUNTY: Clallam

SALE LOCATION: Sale located approximately 3 miles south of Joyce, WA

PRODUCTS SOLD AND SALE AREA:

All timber, except trees marked with a band of blue paint or bounded by leave tree area, or any downed red cedar, bounded by timber sale boundary tags, the PA-J-1000 Road and property line (take/remove trees) in Unit 1; timber sale boundary tags and the PA-J-1000 Road in Unit 2.

All timber bounded by right of way boundary tags.

All forest products above located on part(s) of Sections 9, 10, 15 and 22 all in Township 30 North, Range 8 West, W.M., containing 56 acres, more or less.

CERTIFICATION: This sale is certified under the Sustainable Forestry Initiative® program Standard (cert no: PwC-SFIFM-513)

ESTIMATED SALE VOLUMES AND QUALITY:

Table with columns: Species, Avg DBH, Ring Count, Total MBF, and MBF by Grade (1P, 2P, 3P, SM, 1S, 2S, 3S, 4S, UT). Rows include Douglas fir, Red alder, Hemlock, Maple, Redcedar, Spruce, Grand fir, and Sale Total.

MINIMUM BID: \$213,000.00

BID METHOD: Sealed Bids

PERFORMANCE SECURITY:

\$42,600.00

SALE TYPE: Lump Sum

EXPIRATION DATE: October 31, 2024

ALLOCATION: Export Restricted

BID DEPOSIT: \$21,300.00 or Bid Bond. Said deposit shall constitute an opening bid at the appraised price.

HARVEST METHOD: 72% - Uphill Cable/28% - Ground. Forest Products shall be harvested and removed using cable, cable-tethered, and ground based equipment. Cable-tethered equipment is limited to sustained slopes of 75% and less. Non-tethered self-leveling tracked equipment is limited to sustained slopes that are 45 percent and less. Rubber tired skidders are restricted unless approved by the Contact Administrator. Authority to use other equipment or to operate outside the equipment specifications detailed above must be approved in writing by the State. Falling and Yarding will not be permitted from



TIMBER NOTICE OF SALE

November 1 to April 30 unless authorized in writing by the Contract Administrator on weekends, State recognized holidays or from 8:00pm to 6:00am.

ROADS:

24.10 stations of required reconstruction. 2.65 stations of optional reconstruction. 420.25 stations of required prehaul maintenance. 2.50 stations of optional prehaul maintenance. Timber haul, rock haul, pre-haul maintenance, reconstruction and road construction will not be permitted from November 1 to April 30 unless authorized in writing by the Contract Administrator on weekends, State recognized holidays, or from 8:00pm to 6:00am

Rock identified to be used out of a State lands rock pit shall meet specifications as identified within the Road Plan, which will be determined by the Contract Administrator. If the rock does not meet the specifications, a commercial source shall be used that does and at the Purchaser's expense. The hauling of forest products will not be permitted from November 1 to April 30 unless authorized in writing by the Contract Administrator.

ACREAGE DETERMINATION

CRUISE METHOD: Sale acreage was 100% GPS'd. Sale units were cruised using a variable plot sample.

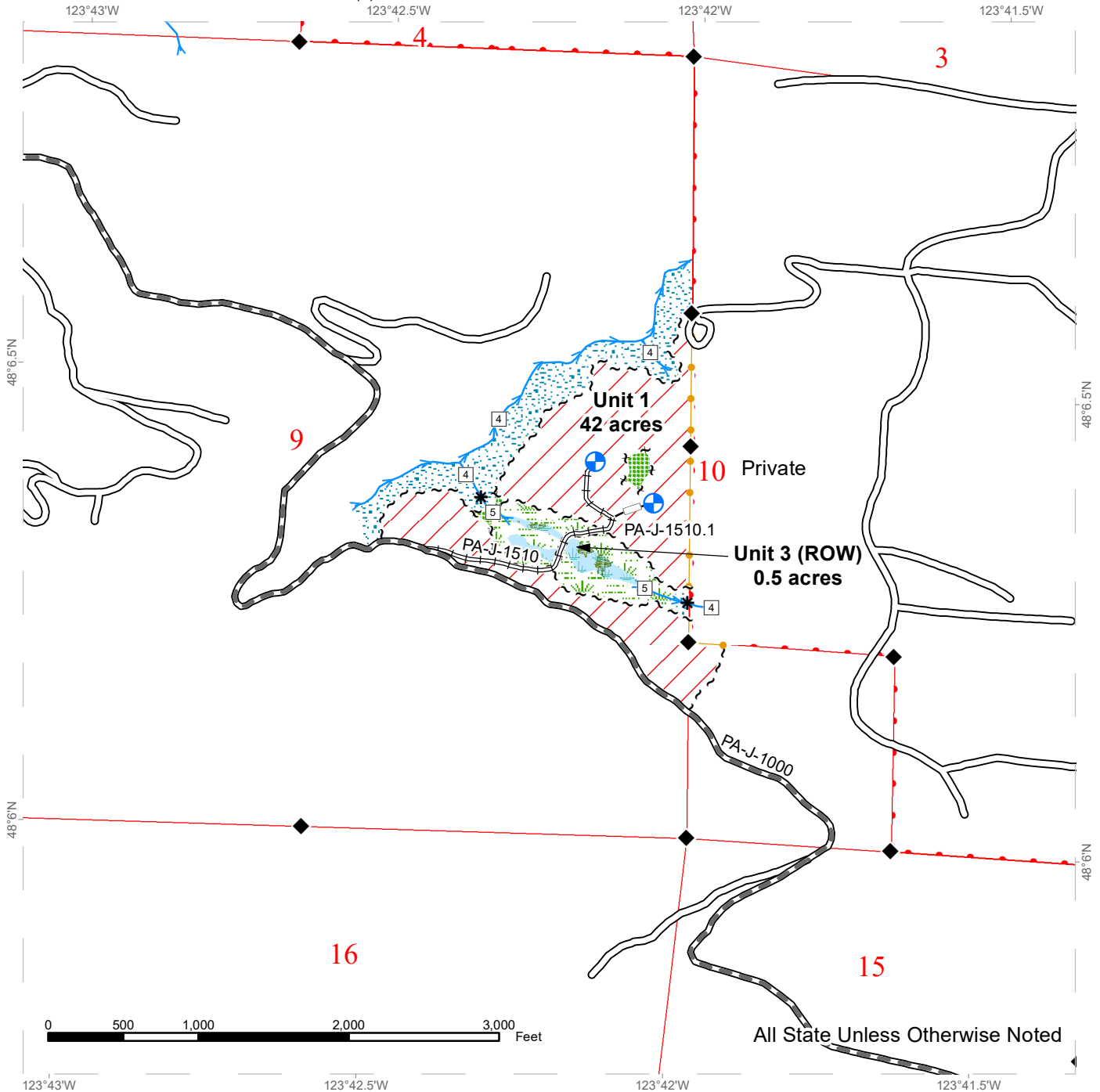
FEES: \$19,210.00 is due on day of sale. \$9.00 per MBF is due upon removal. These are in addition to the bid price.

SPECIAL REMARKS: All trees 60 inches in Diameter at Breast Height (DBH) and greater, shall not be felled unless for safety reasons, which must be approved by the Contract Administrator. If trees 60 inches in DBH or greater need to be felled for safety reasons, trees will be left where felled.

TIMBER SALE MAP

SALE NAME: ALDERAAN
AGREEMENT #: 30-104353
TOWNSHIP(S): T30R8W
TRUST(S): State Forest Transfer (1)

REGION: Olympic Region
COUNTY(S): Clallam
ELEVATION RGE: 840-1280



All State Unless Otherwise Noted

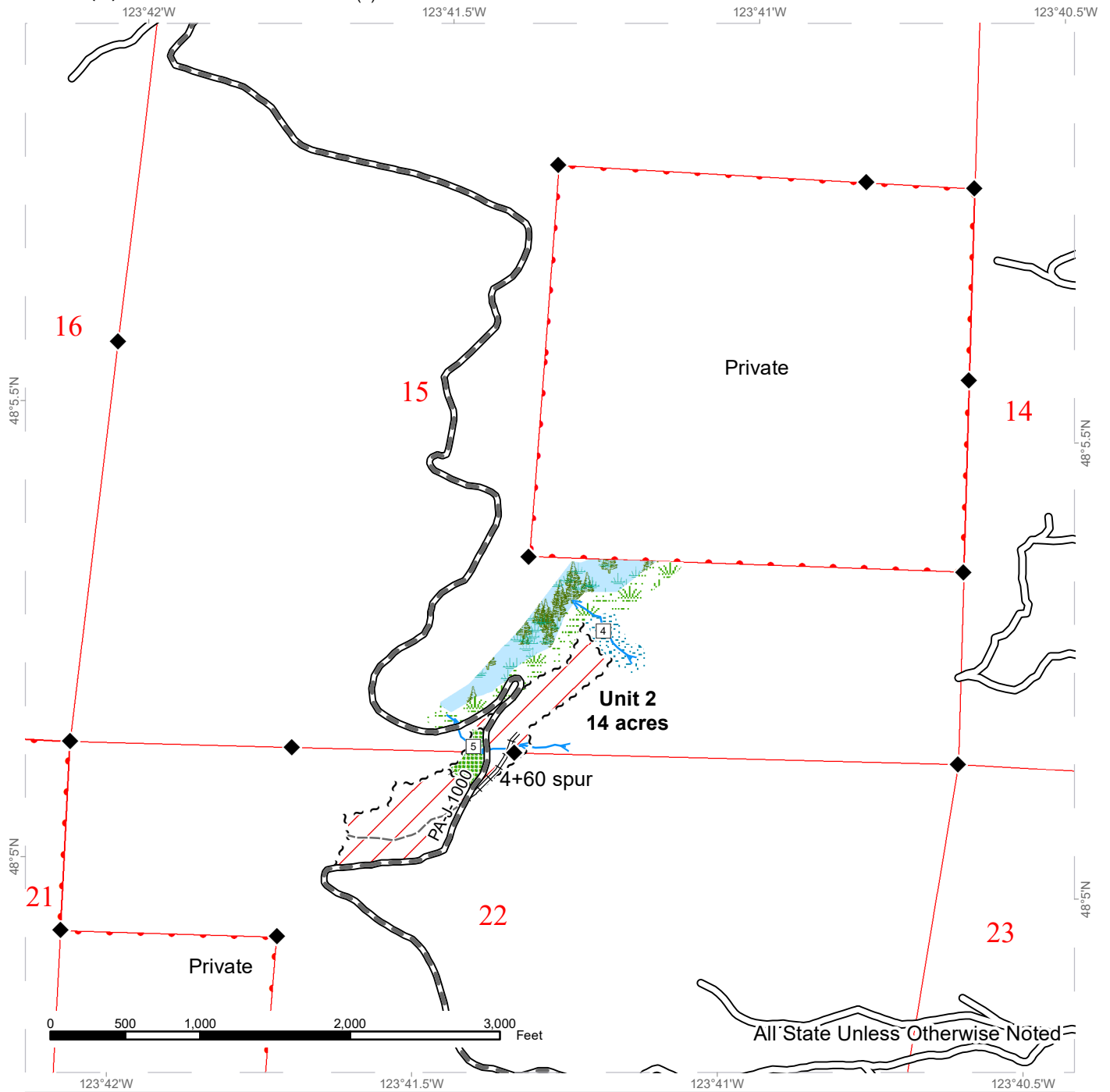
	Variable Retention Harvest		Existing Roads		Streams
	Leave Tree Area		Required Pre-Haul Maintenance		Stream Type
	Forested Wetland		Required Reconstruction		Stream Type Break
	Riparian Management Zone		Optional Reconstruction		Survey Monument
	Wetland Management Zone		Sale Boundary Tags		Landing - Proposed
	DNR Managed Lands		Leave Tree Tags		
			Take / Removal Trees		



TIMBER SALE MAP

SALE NAME: ALDERAAN
AGREEMENT #: 30-104353
TOWNSHIP(S): T30R8W
TRUST(S): State Forest Transfer (1)

REGION: Olympic Region
COUNTY(S): Clallam
ELEVATION RGE: 840-1280



All State Unless Otherwise Noted

	Variable Retention Harvest		Existing Roads		Streams
	Leave Tree Area		Required Pre-Haul Maintenance		Stream Type
	Forested Wetland		Required Reconstruction		Stream Type Break
	Riparian Management Zone		Old Grades		Survey Monument
	Wetland Management Zone		Sale Boundary Tags		Landing - Proposed
	DNR Managed Lands		Leave Tree Tags		
			Take / Removal Trees		

DRIVING MAP

SALE NAME: ALDERAAN
AGREEMENT#: 30-104353
TOWNSHIP(S): T30R8W
TRUST(S): State Forest Transfer (1)

REGION: Olympic Region
COUNTY(S): Clallam
ELEVATION RGE: 840-1280



Map may not be to scale

- Timber Sale Unit
- Waterbodies
- Town
- Highway
- Haul Route
- Other Road
- Milepost Markers
- Distance Indicator
- Rock Pit

DRIVING DIRECTIONS:

Unit 1 & 3: From the town of Joyce, head west on State Hwy-112 for 0.6 miles. Turn left on Joyce-Piedmont Rd and continue for 0.1 miles. Then turn left on PA-J-1000. Proceed for 3.7 miles before arriving at unit 1 & 3.

Unit 2: From unit 1, continue south on the PA-J-1000 for 2.3 miles before arriving at unit 2.



**State of Washington
Department of Natural Resources**

SEALED BID FORM

Sale Name _____ Agreement Number _____

_____ hereby submits the following bid for timber.
(Print full, legal company name)

(Street address, City, State, Zip Code)

(Phone Number)

Lump Sum Bid (Not Including Fees) \$ _____ **For Total Sale**

Weight Scale Sale Bid (Not Including Fees) \$ _____ / **Ton**

Scribner Scale Sale Bid (Not Including Fees) \$ _____ / **MBF For Biddable Species**

BID DEPOSIT

Bid Deposit Amount: \$ _____

Bid Deposit Type:

- Cash, certified check, cashiers check, or money order
 Per Sale Bid Bond
 Statewide Bid Bond, Number _____

Within 30 days of confirmation date the successful bidder agrees to furnish Performance Security acceptable to the State in the amount specified on the Notice of Sale. Performance Security must guarantee performance of all provisions of the contract and payment of any damages caused by operations under the contract or resulting from the successful bidders noncompliance with any rule or law.

Bidder's Warranty and Bid Signature

By signing and submitting this bid as an offer to purchase forest products from the State, the Bidder hereby warrants to the State that they have had an opportunity to fully inspect the sale area and the forest products being sold. Bidder further warrants to the State that they enter this bid based upon their own judgments of the value of the forest products, formed after their own examination and inspection of both the timber sale area and the forest products being sold. Bidder also warrants to the State that they enter this bid without any reliance upon the volume estimates, acreage, appraisals, pre-bid documentation, or any other representation by the Washington State Department of Natural Resources.

_____ Date _____
(Signature of Authorized Representative submitting this bid)

(Print name and title of Authorized Representative submitting this bid)

Note: all sales are subject to confirmation by the Commissioner of Public Lands (Refer 79.15.120)

Instructions For Completing Sealed Bid Form

All bids submitted for the purchase of forest products being sold by the Washington State Department of Natural Resources must have an original signature on behalf of the person or entity submitting the bid, and must be on the form provided in this booklet or a photocopy thereof. The DNR will not accept bids that are not signed, and will not accept bids that are not on the current, approved bid form. All appropriate blanks on bid form must be completed including the bid bond number if the bidder is relying upon a bid bond for bid deposit.

For more specific information, contact the appropriate region office.

In-Person Bids

- A. Sealed bids must be in auction box before 10:00 a.m. on the day of auction at the location specified in the Timber Notice of Sale.
 - B. Sealed bids must be submitted in an envelope with the name of the sale, the bidder's name and the contract number clearly written on the outside of the envelope. The full legal name and business address of the bidder must be inserted where indicated on the form, and must be on the bid bond and timber sale contract. The bid form must be signed by an authorized representative. When a bidder has more than one person authorized to bid, documentation of those persons with signature authority for bidding must accompany the bid or be on file at the region office. Sealed bid envelopes are available at all region offices. One bid per envelope.
 - C. Sealed bid envelopes **must** contain a completed bid form and a bid deposit.
 - D. Sealed bid envelopes **may** contain a check for the Initial Deposit amount and a check for fees.
-

Mailed Bids

- A. Bids that are mailed are required to have printed on the outside: "DO NOT OPEN UNTIL SALE DATE. SEALED BID ENCLOSED". The sealed bid envelope(s) will be enclosed inside the mailed-in envelope. Mailed bids must be submitted in an envelope with the name of the sale, the bidder's name and the agreement number clearly written on the outside of the envelope. The full legal name and business address of the bidder must be inserted where indicated on the form, and must be the same on the bid bond and timber sale contract. The Sealed Bid Form must be signed by an authorized representative. When a bidder has more than one person authorized to bid, documentation of those persons with signature authority for bidding must accompany the bid or be on file at the region office. Mail-in envelopes are available at all region offices. One bid per mailed-in envelope.
 - B. Bids that are mailed will be accepted up to 4:30 p.m. the last business day before the auction by the region office in which the sale is located. Bidders assume the risk for the method of delivery. The DNR assumes no responsibility for any delays caused by any delivery service.
 - C. Sealed bid envelopes **must** contain a completed bid form and a bid deposit.
 - D. Sealed bid envelopes **may** contain a check for the Initial Deposit amount and a check for fees.
-

Initial Deposit:

Lump Sum Sales - Initial Deposit must equal 10% of the total bid submitted.
(25% if the bidder is a defaulter as defined under WAC 332-140-300)

Weight Scale Sales - Initial Deposit must equal 10% of the bid per ton multiplied by the total sale estimated tonnage. (25% if the bidder is a defaulter as defined under WAC 332-140-300)

Scribner MBF Scale Sales - Initial Deposit must equal 10% of the bid per MBF multiplied by the total sale MBF. (25% if the bidder is a defaulter as defined under WAC 332-140-300)

**State of Washington
Department of Natural resources**

STATEWIDE BID BOND

Bond Number _____

_____ of _____,
(Principal's Name) (City, State)

hereinafter called PRINCIPAL, and _____ hereinafter called
SURETY,

a corporation organized under the laws of the State of _____, and authorized to transact surety business in the State of Washington, as SURETY, are held and firmly bound jointly and severally to the State of Washington, Department of Natural Resources, hereinafter called the STATE, in the sum of \$150,000.00 Dollars, lawful money of the United States of America. The PRINCIPAL binds itself, its heirs, executors, administrators, successors, and assigns, and the SURETY binds itself, its successors, and assigns, all jointly and severally.

This bond shall be governed by the laws of the State of Washington. In the event of a lawsuit involving this bond, a venue shall be proper only in Thurston County Superior Court.

Signed, sealed and dated this _____ day of _____, _____ .
(month) (year)

This statewide bid bond may be used for bidding between the following dates:

Starting:

Ending:

It Is Hereby Understood and Agreed:

If PRINCIPAL is an apparent high bidder, PRINCIPAL shall before 4:30 p.m ., on day of sale, pay to the STATE the amount of the initial deposit in the form of a certified check, cashier's check, bank draft, cash or money order, then this agreement shall be void for the sale on which the payment is made; otherwise, it will remain in force.

SURETY will make payment to the STATE within ten days after demand by the STATE if the PRINCIPAL shall fail to make timely payment as described above.

The SURETY may cancel this bond by sending a written notice to the STATE, not less than forty-five days before a cancellation date; liability shall terminate as to acts or omissions of the PRINCIPAL that occur after the cancellation date.

The PRINCIPAL and the SURETY executed this bond on the date first mentioned.

Principal: (Above named)

Signature: _____

Name: _____

Title: _____

Address: _____

City: _____
State & Zip Code

Surety: (Above named)

Signature: _____

Name: _____

Title: _____

Address: _____

City: _____
State & Zip Code

Surety: (Local Office of Authorized agent)

Signature: _____

Name: _____

Title: _____

Address: _____

City: _____
State & Zip Code

Notary or Company Seal in Space Above

Instructions for Completing Timber Sale Statewide Bid Bond

- A. This form is authorized for use as bid guaranty to qualify for bidding on Washington State Department of Natural Resources timber sales.
- B. The Statewide Bid Bond may be used as bid guaranty on more than one timber sale.
- C. The full legal name and business address of the PRINCIPAL must be inserted where indicated and must be the same as will appear on the bidding record and timber sale contract. The bond must be signed by an authorized person. Additionally, the name must be typed or printed below the signature and title must be shown.
- D. The full legal name and business address of the SURETY must be inserted where indicated. The bond must be signed by an authorized person. Additionally, the name must be typed or printed below the signature and the title must be shown.
- E. If the SURETY does not have a Washington State office or resident agent, but is authorized to transact surety business in the State of Washington as SURETY, it may leave this signature block blank.
- F. This form must be received by the Department of Natural Resources, Product Sales & Leasing Division, PO BOX 47016, Olympia, Washington, 98504-7016, ten days in advance of the auction.
- G. **The State reserves the right to reject *incomplete or incorrect* bid bond forms, making such forms unacceptable as bid guaranty.**

**State of Washington
Department of Natural Resources**

Timber Sale Per Sale Bid Bond

Bond Number _____

_____ of _____, hereinafter called PRINCIPAL, and _____, hereinafter called SURETY, a corporation organized under the laws of the State of _____ and authorized to transact surety business in the State of Washington, as SURETY, are held and firmly bound jointly and severally to the State of Washington, Department of Natural Resources, hereinafter called the STATE, in the sum of \$ _____ Dollars, lawful money of the United States of America. The PRINCIPAL binds itself, its heirs, executors, administrators, successors, and assigns, and the SURETY binds itself, its successors, and assigns, all jointly and severally.

This bond shall be governed by the laws of the State of Washington. In the event of a lawsuit involving this bond, venue shall be proper only in Thurston County Superior Court.

Signed, sealed, and dated this _____ day of _____, 20 _____.

BID IDENTIFICATION:

SALES NAME(S)	REQUIRED DEPOSIT	AGREEMENT NUMBER(S)

DATE OF BID: _____

It Is Hereby Understood and Agreed:

If PRINCIPAL is the high bidder on the sale(s) identified above and, within ten (10) days of the day of sale, transmits cash, certified check, cashier's check, bank draft or money order, payable to the STATE, in the amount of the bid guaranty required by the terms of the Notice of Sale, *then* this obligation shall be void; *otherwise*, it shall remain in force.

SURETY will make payment to the STATE within ten (10) days after demand by the STATE whenever the PRINCIPAL shall fail to make timely payment as described above.

IN WITNESS WHEREOF: the PRINCIPAL and the SURETY have caused this bond to be executed on the date first mentioned.

SECOND OFFICER:

Signature: _____

Name: _____

Title: _____

PRINCIPAL: (Above Named)

Signature: _____

Name: _____

Title: _____

SURETY: (Local Office of Authorized Agent)

Signature: _____

Name: _____

Title: _____

Address: _____

City: _____

State & Zip: _____

SURETY: (Above Named)

Signature: _____

Name: _____

Title: _____

Address: _____

City: _____

State & Zip _____

NOTARY OR COMPANY SEAL IN THE SPACE ABOVE

Instructions for Completing Timber Sale Per Sale(s) Bid Bond

- A. This form is authorized for use as bid guaranty to qualify for bidding on Washington State Department of Natural Resources timber sales.
- B. The Timber Sale Per Sale Bid Bond may be used as bid guaranty on more than one timber sale auction held the same date at the same location.
- C. The full legal name and business address of the PRINCIPAL must be the same as will appear on the bidding record and timber sale contract. The bond must be signed by an authorized person, the name typed or printed, and title shown. If PRINCIPAL is a corporation, a second officer must sign in the space to the left of the signature of the officer executing for the PRINCIPAL.
- D. The full legal name and business address of the SURETY must be inserted where indicated. The bond must be signed by an authorized person. Additionally, the name must be typed or printed below the signature and the title must be shown. If this person is not an officer of the corporation, evidence of authority must be submitted.
- E. If the SURETY does not have a Washington State office or resident agent, but is authorized to transact surety business in the State of Washington as Surety, it may leave the local office signature block blank.
- F. The date of the bid bond must not be later than the auction date.
- G. **The State reserves the right to reject incomplete or *incorrect* bid bond forms, making such forms unacceptable as guaranty.**

STATE OF WASHINGTON
DEPARTMENT OF NATURAL RESOURCES

LOG SORT SEALED BID FORM

Sale Name _____ Agreement Number _____ Date _____

_____ hereby submits the following bid for delivered logs.
(Print Company Name)

_____ Telephone Number _____
(Print Name Authorized Company Representative) (Contact for bid result notification)

(Street Address)

(City, State and Zip)

Agreement Number	Sort Number	<u>Delivered Logs Bid Amount</u> (fill in one only)	
		\$ /MBF	\$ /TON

Bid Deposit Amount \$ _____

Bid Deposit Type: Cash, Certified Check, Cashiers Check, or Money Order
 Per Sale Bid Bond
 Statewide Bid Bond, Number _____

The successful bidder agrees to furnish payment security acceptable to the State in the amount as described in clause P-041 of the Purchaser’s contract prior to log delivery and at a date to be determined by the State.

Bidder’s Warranty and Bid Signature

By signing and submitting this bid as offer to purchase forest products from the State, the Bidder hereby warrants to the State that they have had an opportunity to fully inspect the sale area and the forest products being sold. Bidder further warrants to the State that they enter this bid based solely upon their own judgment of the value of the forest products, formed after their own examination and inspection of both the timber sale area and the forest products being sold. Bidder also warrants to the State that they enter this bid without any reliance upon the volume estimates, acreage estimates, appraisals, pre-bid documentation, or any other representation by the State Department of Natural Resources.

(Signature of Authorized Representative submitting this bid)

(Date of Signature)

(Print name and title of Authorized Representative submitting this bid)

NOTES: A separate bid form is required for each log sort bid and must be delivered in a separate envelope. Photocopies of this bid form may be used. Each photocopy must have original signatures. Final contract award is contingent upon the State’s haul cost analysis. Actual haul route may vary and is subject to change at the State’s discretion. All sales are subject to confirmation by the Commissioner of Public Lands as per RCW 79.15.100.

LOG SORT SEALED BID SUPPLEMENTAL INFORMATION FORM

(Print Company Name)

(Sale Name)

(Agreement Number)

(Sort Number)

(email: optional for DNR production report distribution)

Log Manufacturing Specifications:

Sawlog and Peeler sorts: Enter at least one preferred log length including trim for each log length range below.

Pole sorts (Distribution): Enter three or more lengths. Attach preferred manufacturing information.

Pole sorts (Transmission): Enter six or more lengths. Attach preferred manufacturing information.

Tonnage sorts: See bid form instructions for required log lengths. Enter additional custom lengths as desired.

Log Length Ranges	Bidder's Preferred Log Lengths
16 ft. through 20 ft.	
22 ft. through 30 ft.	
32 ft. through 40 ft.	
Distribution Poles – 35 ft. through 55 ft.	
Transmission Poles – 60 ft.+	

Log Delivery Information:

1) Designate the point of delivery and address (must be a street address)

(Location Name)

(Street Address)

(City, State and Zip)

2) Designate the state approved Scaling and Weighing facilities closest to the point of delivery as needed.

Scaling Location Information

(Scaling Location Name)

(Third Party Scaling Organization)

(Scaling Location Street Address)

(Scaling Location City, State and Zip)

Weighing Location Information

(Weighing Location Name)

(Weighing Location Owner)

(Weighing Location Street Address)

(Weighing Location City, State and Zip)

Final contract award is contingent upon the State's haul cost analysis. Actual haul route may vary and is subject to change at the State's discretion. Additional terms or conditions requested by the bidder on or attached to the Log Sort Sealed Bid or Supplemental Information Forms are informational only and non-binding.

Instructions for Completing the Log Sort Sealed Bid and Supplemental Information Forms.

All bids submitted for the purchase of forest products being sold by the Washington State Department of Natural Resources must have an original signature on behalf of the person or entity submitting the bid, and must be on the form(s) provided in this booklet or a photocopy thereof. The DNR will not accept bids that are not signed, and will not accept bids that are not on the current, approved bid form. All appropriate blanks including Agreement Number, Sort Number, Bid amount (per mbf or ton as appropriate for the sort), Bid deposit amount and type. Signatures and date on bid form must be completed including the bid bond number if bidder is relying upon a bid bond for bid deposit.

Bids shall not be accepted if a completed '**Log Sort Sealed Bid Supplemental Information Form**' is not included with the approved '**Log Sort Sealed Bid Form**'.

Required log lengths for tonnage sorts: Preferred log lengths for tonnage sawlog sorts shall include the following plus any additional lengths identified on the Bid Supplemental Information form:

Species Type	Preferred Lengths
Conifer Sorts	16', 20', 24', 26', 32', 40'
Hardwood Sorts	18', 20', 26', 28', 30', 36', 38', 40'

For more specific information, contact the appropriate region office.

In-Person Bids

- A. Sealed bids must be in auction box or auction envelope before 10:00 a.m. on the day of sale at the location specified in the notice of sale.
- B. Sealed bids must be submitted in an envelope with the name of the sale, the bidder's name and the contract agreement number clearly written on the outside of the envelope. The full legal name and business address of the bidder must be inserted where indicated on the form, and must be the same as the name on the bid bond and timber sale contract. The bid form must be signed by an authorized person. When a bidder has more than one person authorized to bid, then documentation of those persons with signature authority for bidding must accompany the bid or be on file at the region office. Sealed bid envelopes are available at all region offices. One bid per envelope.
- C. Sealed bid envelopes must contain the following:
 1. A completed '**Log Sort Sealed Bid Form**';
 2. A completed '**Supplemental Information Form**' and;
 3. A bid deposit

Mailed Bids

- A. Mail-in bid envelopes are required to have printed on the outside: "DO NOT OPEN UNTIL SALE DATE. SEALED BID ENCLOSED." The sealed bid envelope(s) will be enclosed inside the mailed-in envelope. Mailed bids must be submitted in an envelope with the name of the sale, the bidder's name and the agreement number clearly written on the outside of the envelope. The full legal name and business address of the bidder must be inserted where indicated on the form, and must be the same on the bid bond and timber sale contract. The bid form must be signed by an authorized person. When a bidder has more than one person authorized to bid, then documentation of those persons with signature authority for bidding must accompany the bid or be on file at the region office. Mail-in envelopes are available at all region offices. One bid per mailed-in envelope.
- B. Mail-in or otherwise delivered bids will be accepted up to 4:30 p.m. the last business day before the auction by the region office in which the sale is located. Bidders assume the risk for the method of delivery they chose. The DNR assumes no responsibility for any delays caused by any delivery service.
- C. Sealed bid envelopes must contain the following:
 1. A completed '**Log Sort Sealed Bid Form**';
 2. A completed '**Log Sort Sealed Bid Supplemental Information Form**' and;
 3. A bid deposit

Department of Natural Resources Region Offices

Olympia Headquarters
 1111 Washington St SE
 MS 47000
 Olympia, WA 98504-7000
 (360) 902-1000
www.dnr.wa.gov

Product Sales & Leasing Division

1111 Washington St SE
 MS 47014
 Olympia, WA 98504-7014
 (360) 902-1600

South Puget Sound Region
 950 Fairman Ave N
 Enumclaw, WA 98022-9282
 (360) 825-1631

Pacific Cascade Region

601 Bond Road
 PO Box 280
 Castle Rock, WA 98611-0280
 (360) 577-2025

Southeast Region

713 Bowers Road
 Ellensburg, WA 98926-9301
 (509) 925-8510

Northwest Region

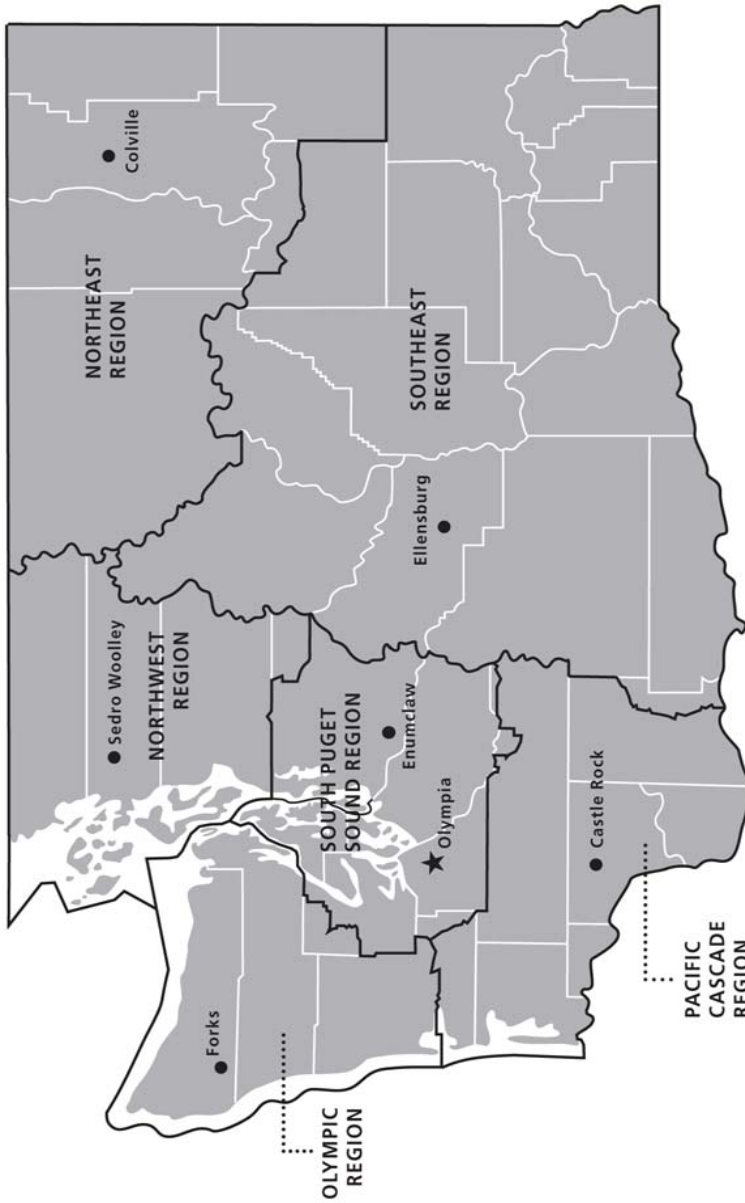
919 N Township St
 Sedro Woolley,
 WA 98284-9384
 (360) 856-3500

Olympic Region

411 Tillicum Lane
 Forks, WA 98331-9271
 (360) 374-2800

Northeast Region

225 S Silke Road
 PO Box 190
 Colville, WA 99114-0190
 (509) 684-7474



DNR REGIONS

- DNR Region Boundaries
- County Boundaries
- DNR Region Office
- Olympia Headquarters



WASHINGTON STATE DEPT OF
NATURAL RESOURCES



For more information about how public lands are managed visit DNR's web page at www.dnr.wa.gov

Fire, Burn Ban Information and Region Offices
 Toll Free: 1-800-527-3305 General TTY: 7-1-1





WASHINGTON STATE DEPT OF
**NATURAL
RESOURCES**

1111 WASHINGTON ST SE
MS 47014
OLYMPIA WA 98504-7014

www.dnr.wa.gov

For alternate formats
of this document,
Call (360) 902-1000
TRS: 7-1-1

PRINTED IN THE USA ON RECYCLED PAPER

