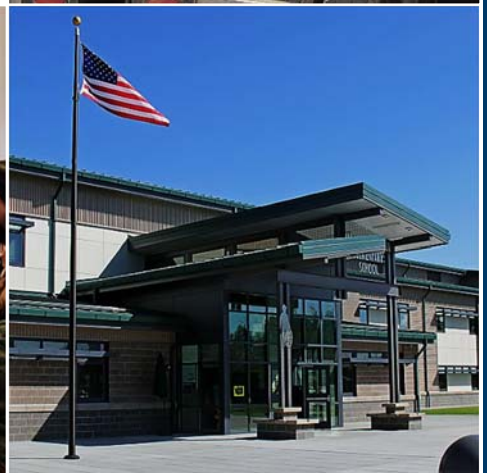




# Public Auction Sale of Timber

## AUGUST 2020

Book 1014



# IMPORTANT NOTICES

## *Natural Resources (DNR)*

### **Governmental Regulatory Actions or Orders**

The purchaser assumes the risk of liabilities related to regulatory actions or orders by any government agency that may affect the operability of these timber sales. Such regulatory actions or orders include, but are not limited to, actions taken pursuant to the State Forest Practices Act, Chapter 76.09 RCW, and the Federal Endangered Species Act, 16 U.S.C. §§ 1531-1544. Please see timber sale contract clauses G-066 and G-220 for further information.

### **Threatened and Endangered Species**

DNR cannot verify the presence or absence of any threatened or endangered species that may affect the operability of the timber sale. Purchasers must rely on their own assessments.

### **Export Restricted**

All timber purchased under these state DNR contracts shall not be exported outside of the United States until the timber has been processed. Purchasers shall not violate any of the prohibitions in WAC 240-15-015 (relating to the prohibitions on export and substitution), WAC 240-15-025 (relating to reporting requirements), and WAC 240-15-030 (relating to enforcement). If purchasers knowingly violate WAC 240-15-015, purchasers shall be barred from bidding on or purchasing export restricted timber as provided.

### **Cover photos**

Timber Sales in this book are from state trust lands, managed to help build K-12 public schools, state universities, colleges, prisons, mental hospitals, the state Capitol; and to support local services in many counties.

**Top right:** Landscape view of DNR-managed trust lands in western Washington. Photo courtesy of DNR staff.

**Second down right:** Timber harvest operations on DNR-managed trust land. Photo courtesy of DNR staff.

**Third down right:** Log truck loaded with timber harvested from DNR-managed trust land. Photo courtesy of DNR staff.

**Bottom right:** Marcus Whitman Elementary School in Richland Washington. Photo courtesy of Richland School District.

**Bottom middle:** Storytime at the Shelton Timberland Library. Photo courtesy of Timberland Regional Library.

**Bottom left:** Douglas-fir seedlings growing at the Webster Nursery. Many of these seedlings will be planted following timber harvest on DNR-managed trust lands. Photo courtesy of DNR staff.

## Table of Contents

Certification Opportunities for DNR Timber Purchasers	Page 3
Bidder/Purchaser Auction and Bidding Information	Page 5
Summary of All Sales Being Offered in August	Page 11
Relleskop	Page 13
Q Gibraltar	Page 19
Bluegrass	Page 31
Big Red	Page 37
Q Grandview	Page 43
Sealed Bid Form and Instructions	Page 47
Statewide Bid Bond and Instructions	Page 49
Timber Sale per Sale Bid Bond and Instructions	Page 53
Log Sort Sealed Bid Form and Instructions	Page 57





## **Certification Opportunities for DNR Timber Purchasers**

Certified forests are grown to an approved set of standards which demonstrate environmentally responsible, socially beneficial, and economically viable management practices that promote responsible forestry. This unique commitment to responsible forestry recognizes that forest landowners play a critical role in ensuring the long-term health and sustainability of our forests.

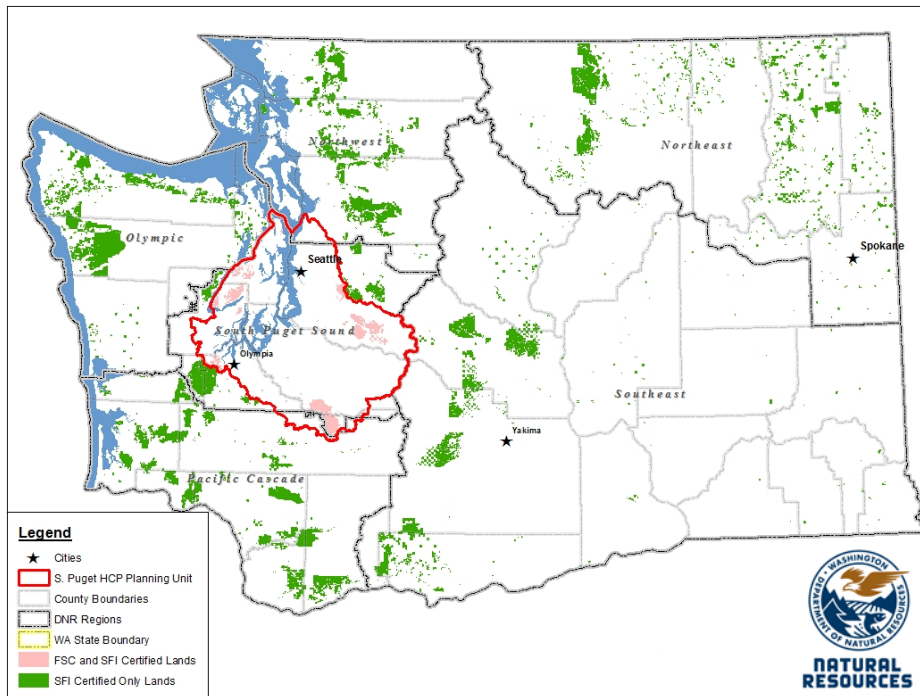
Forest Stewardship Council® (FSC®) is an independent, non-profit organization that promotes responsible management of the world's working forests through the development of forest management standards, a voluntary certification system, and trademarks that provide recognition and value to products bearing the FSC label in the marketplace. FSC standards ensure forestry is practiced in an environmentally responsible, socially beneficial, and economically viable way.

Sustainable Forestry Initiative Inc. is an independent, non-profit organization internationally endorsed and accepted around the world. The Sustainable Forestry Initiative® (SFI) program is based on the premise that responsible environmental behavior and sound business decisions can coexist. Its three-chamber Board of Directors governs all aspects of the SFI® program, with equal representation from the environmental, economic, and social sectors.

Currently, all Department of Natural Resources (DNR)-managed forestlands and conservation areas in Washington State are certified under the SFI program Standard. Forestlands within DNR's South Puget Habitat Conservation Plan Planning Unit, located within parts of King, Pierce, Thurston, Lewis, Kitsap, and Mason counties, are dually certified under both the FSC-US Forest Management Standard and the SFI program Standard.

Certification under each standard involves an inspection audit of the landowner's forest management activities by an independent, accredited third-party to verify that it meets specified forest management principles. If the forest unit complies with the specific standard, the landowner receives a certificate of conformance ensuring that responsible forestry is being practiced. Both standards encourage integration of perpetual growing and harvesting of trees with strong measures to protect wildlife, plants, soil, water, and air quality. Both standards provide a seal of approval that forests certified under these principles are well-managed. The global marketplace recognizes and endorses multiple forest certification standards. Each standard has individual market niches. By being dually certified, DNR can maximize its customer base and provide choices to the consumer.





DNR's FSC certificate number is: BV-FM/COC-080501

DNR's SFI certificate number is: PwC-SFIFM-513

DNR-managed forestlands within the South Puget Habitat Conservation Plan Planning Unit (located within parts of King, Pierce, Thurston, Lewis, Kitsap, and Mason counties) are certified as being in compliance with the Forest Stewardship US Forest Management Standard.

To learn more about chain of custody and demonstrating that your timber is derived from a responsibly managed forest and/or to learn more about becoming a participant in the FSC Program, visit <https://us.fsc.org/>.

To learn more about DNR timber sales certified under the FSC Standard, visit [www.dnr.wa.gov](http://www.dnr.wa.gov).

FSC A.C. owns all right, title, and interest in and to the Forest Stewardship Council trademarks.

All DNR-managed forested state trust lands across the state have been certified as being in compliance with the Sustainable Forestry Initiative Forest Management Standard.

To learn more about chain of custody and demonstrating that your timber is derived from a responsibly managed forest and/or to learn more about becoming a participant in the SFI program, visit [www.sfiprogram.org](http://www.sfiprogram.org).

To learn more about DNR timber sales certified under the SFI program Standard, visit [www.dnr.wa.gov](http://www.dnr.wa.gov).

SFI Marks are registered marks owned by Sustainable Forestry Initiative Inc.

**To learn more about certification on DNR-managed forested state trust lands, visit <https://www.dnr.wa.gov/programs-and-services/product-sales-and-leasing/timber-sales/forest-certification> or contact:**

**Product Sales & Leasing Division, Product Sales Section:**

Koshare Eagle, Assistant Division Manager, 360-902-1561, [koshare.eagle@dnr.wa.gov](mailto:koshare.eagle@dnr.wa.gov)  
 Steve Teitzel, Operations, 360-902-1741, [steve.teitzel@dnr.wa.gov](mailto:steve.teitzel@dnr.wa.gov)

**Forest Resources Division, HCP and Scientific Consultation Section:**

Allen Estep, Assistant Division Manager, 360-902-2898, [allen.estep@dnr.wa.gov](mailto:allen.estep@dnr.wa.gov)  
 Douglas Kennedy, Forest Certification Program Lead, 360-902-1283, [douglas.kennedy@dnr.wa.gov](mailto:douglas.kennedy@dnr.wa.gov)

# Washington State Department of Natural Resources (DNR)

## **Bidder's/Purchaser's Inspection of Sale Area and Forest Products**

Acreage estimates and volume estimates contained within each timber notice of sale and each timber sale contract are made only for administrative and identification purposes. Except as expressly provided by the timber sale contract, the purchaser shall be responsible for paying the entire purchase price, even if the actual acreage or timber volume varies from the estimated quantity or volume shown.

All prospective bidders have the opportunity and are expected to inspect the sale area and the forest products located thereon. Bidders shall not rely on any representations by the State including, but not limited to, acreage estimates, volume estimates, appraisal or pre-bid documentation. The successful bidder/purchaser will further warrant that they have entered the timber sale contract without any reliance upon the DNR's volume estimates, acreage estimates, appraisals, pre-bid documentation, or any other representation by the DNR.

*Any timber sale contract arising out of these public auctions will require the successful purchaser to warrant that they are entering the timber sale contract based solely upon their own judgment of the value of the forest products, formed after their own examination and inspection of both the timber sale area and the forest products being sold.*

## **Exclusion and Disclaimer of Warranties**

The PARTIES AGREE that the IMPLIED WARRANTIES OF MERCHANTABILITY AND FITNESS FOR A PARTICULAR PURPOSE, and ALL OTHER WARRANTIES EXPRESS OR IMPLIED, ARE EXCLUDED from this transaction, and shall not apply to the goods sold. For example, THE FOLLOWING SPECIFIC MATTERS ARE NOT WARRANTED, and are EXCLUDED from this transaction:

- a. ***The merchantability of the forest products.*** The use of the term "merchantable" in any document is not intended to vary the foregoing.
- b. ***The condition of the forest products.*** All forest products will be conveyed "AS IS."
- c. ***The acreage contained within any sale area.*** Any acreage descriptions appearing in the timber notices of sale, timber sale contract, timber sale map or other documents are estimates only, provided solely for administrative and identification purposes.
- d. ***The volume, quality, or grade of the forest products.*** The descriptions of the forest products to be conveyed are estimates only, made solely for administrative and identification purposes.
- e. ***The correctness of any soil or surface conditions, presale construction appraisals, investigations, and all other pre-bid documents prepared by or for the State.*** These documents have been prepared for the State's appraisal purposes only.
- f. ***That the sale area is free from threatened or endangered species, or their habitat.*** The State is not responsible for any interferences with forestry operations that result from the presence of any

threatened or endangered species, or the presence of their habitat, within the sale area.

g. *That the forestry operations to be performed under this contract will be free from regulatory actions by governmental agencies.* The State is not responsible for actions to enforce regulatory laws, such as the Washington Forest Practices Act (Chapter 76.09 RCW), taken by the Department of Natural Resources or any other agency that may affect the operability of these timber sales.

h. Items contained in any other documents prepared for or by the State.

Please also see timber sale contract clause G-060 for further information.

## **BIDDING PROCEDURES FOR TIMBER AUCTIONS**

*The general requirements that follow are a part of all Timber Notices of Sale to be auctioned by the Department of Natural Resources (DNR).*

### **General Information**

*The State reserves the right to waive minor irregularities and the right to reject any or all bids.*

A. This book contains the timber notices of sale and maps for each timber sale scheduled to be auctioned. More specific information can be obtained by contacting the appropriate region office at the number listed on the back cover of this book.

B. The timber notice of sale is a summary of sale information. For more specific information, interested parties are encouraged to view the Appraisal Packets on the DNR Internet Site @ [www.dnr.wa.gov](http://www.dnr.wa.gov), this will take you directly to the Product Sales Section. The Appraisal Packets contain **DRAFT** copies of the timber notice of sale, map, contract, road plan, cruise data, precruise and cruise narrative, Forest Practices Application (FPA).

C. The sale preview packets may be obtained at no charge for individual sales by visiting the appropriate region office.

D. Timber sale contracts contain extensive terms and conditions that will be binding upon successful high bidders. Each bidder should carefully review all terms contained in the appropriate **DRAFT** timber sale contract prior to bidding on a sale, and should review the final contract prior to signing. **DRAFT** timber sale contracts are contained in the preview and presales packets and are available upon request at the respective region office.

E. Sales advertised in this book have not been approved by the Board of Natural Resources and are subject to the Board's approval before they will be sold. The Board meets and approves sales approximately six weeks prior to auction. All sales are subject to confirmation by the DNR under RCW 79.15.120.

F. The State does not guarantee the accuracy of any information contained herein pertaining to particular sales. Therefore, all prospective purchasers are expected to make their own independent inspections and appraisals prior to bidding.

G. If any conflict exists between the information in the Timber Notice of Sale, timber sale map,



sale preview packets and that in the timber sale contract, the **signed contract will prevail**.

H. Purchasers must pay the Forest Excise Tax on the bid price, permanent road construction costs, and other considerations. The tax rate is 5% without the EARR credit and 4.2% with the credit. For more information contact the Department of Revenue, Forest Tax Section at 1-800-548-8829.

I. **Within 30 days of sale confirmation, the apparent high bidder will provide to the State the Performance Security** specified on each Notice of Sale. **The successful bidder also agrees to return a signed contract to the State within 30 days of confirmation.** Failure to provide a signed contract to the state within 30 days of confirmation may result in a loss of bidder's rights to the products sold and forfeiture of initial deposit moneys.

J. Each DNR region office has information about sales offered in that region. For further information, contact the respective DNR region office. Region office addresses and telephone numbers appear on the back cover of this booklet.

K. The purchaser assumes the responsibility for any costs associated with extra maintenance or repair levied by a county for any county road used by the purchaser.

## **Bidding Process**

A. All timber will be auctioned using the sealed bid method.

B. Bids submitted on day of auction must be in the bid box at the specified auction location before 10:00 a.m. The respective DNR region office must receive mailed bids by 4:30 p.m., on the last business day before the auction. Bidders assume all risk for the method of delivery.

C. The DNR has the right to reject bid forms that are completed incorrectly. *All bid forms must have an original signature on behalf of the person or entity submitting the bid, and must be on the form provided in this booklet or a photocopy thereof. Revised documents are not permissible.* Bidding instructions are on the back of the Sealed Bid Form. A bid deposit must be included in the sealed bid envelope unless using a Timber Sale Statewide Bid Bond.

D. All bids must include the completed Sealed Bid Form and bid deposit.

E. Bids will be opened in each respective region in the order in which sales appear in the Public Auction Sale of Timber book (alphabetically by county and by agreement number). Sales added after the book is printed will be inserted to retain this order. Sort sales may be auctioned out of this sequence at the State's convpignce.

F. If a tie bid occurs, the names of the tie bidders will be placed in a hat and the successful bidder will be determined by a drawing.

G. For sales offered on a stumpage basis, the apparent high bidder on a particular sale will have the option of withdrawing additional sealed bids submitted for any remaining sales to be auctioned. The apparent high bidder must exercise this option within two minutes after the apparent high bidder is announced. **This option is not available for sales offered on a delivered basis.**

## **Auction Time and Location**

Auctions will start at 10:00 a.m. and close at 4:00 p.m. on the date and at the location specified in each Timber Notice of Sale.

## **Bid Deposits**

- A. Required bid deposits are listed on each Timber Notice of Sale.
- B. Bid deposits must be in the form of cash, certified check, cashiers' check, money order or bid bond.
- C. Bid bonds may be either a Timber Sale Statewide Bid Bond or a Timber Sale Per Sale Bid Bond.
- D. All bid deposits shall be submitted by the person or entity submitting the bid and made payable to the Department of Natural Resources. **Third party deposits will not be accepted.**

### **Timber Sale Per Sale Bid Bonds**

- A. The Per Sale Bid Bond shall guarantee payment of the bid deposit **within ten days of auction.**
- B. The balance between the bid bond and the Initial Deposit payment is due **by 4:30 p.m., on the day of auction.**
- C. Additional forms and instructions for a Per Sale Bid Bond are available at any DNR region office.

### **Timber Sale Statewide Bid Bond**

- A. Statewide Bid Bonds shall guarantee payment of the Initial Deposit on any statewide timber sale while the bond is in effect.
- B. The Statewide Bid Bond must be received by the Department of Natural Resources, Product Sales and Leasing Division, P.O. Box 47014, Olympia, Washington, 98504-7014, ten days in advance of the auction date. The bond shall be in the amount of \$150,000.00.
- C. Successful bidders using a Statewide Bid Bond must pay the total Initial Deposit payment (10% of the total bid price) **by 4:30 p.m., on the day of the auction.**
- D. A Statewide Bid Bond cannot be used to secure the Initial Deposit payment due the day of auction.
- E. Additional forms and instructions for a statewide bid bond are available at any DNR region office.

### **Payments**

The initial deposit for a sale is 10% of the total bid value as submitted by the apparent high bidder (25% if the bidder is a defaulter as defined under WAC 332-140-300) and never less than \$5,000.00 for lump sum sales. For Lump Sum sales appraised at less than \$5,000.00, the entire bid value is due on day of auction.

- A. Apparent high bidders using cash, certified check, cashiers' check or money order as a bid deposit must pay the total Initial Deposit amount by 4:30 p.m. on auction day.
- B. Apparent high bidders using a Timber Sale Per Sale Bid Bond as a bid deposit must pay the difference between the bid deposit and the total initial deposit by 4:30 p.m., on the day of auction. The bid bond amount must be replaced with a certified check, cashiers' check, bank draft, cash, money order, or wire transfer within ten days of the auction.
- C. Apparent high bidders using a Timber Sale Statewide Bid Bond must pay the entire Initial Deposit amount by 4:30 p.m. on the day of auction.

### **Fees due on the day of sale must be paid by 4:30 p.m.**

All payments must be in the form of a certified check, cashiers' check, bank draft, cash, money order or wire transfer.

## **Eligibility to Bid**

In order to bid on State timber sales you must be:

- 18 years of age (or have a co-signer who meets the eligibility requirements)
- Licensed to do business in the State of Washington
- Eligible to bid on Export Restricted timber
- Authorized to submit bids

## **Authorized Representatives**

Company officers or company authorized representatives may bid on State sales, sign State documents, or sign checks. A list of authorized representatives and their specific authorities must be submitted, in writing, to the Department of Natural Resources, Product Sales and Leasing Division, P.O. Box 47014, Olympia, Washington, 98504-7014, ten days in advance of the auction. A company owner or officer must sign this submittal.



**Summary Report of All Sales for the Month of August 2020**

**Board Sales**

<u>County</u>	<u>Region</u>	<u>Agree #</u>	<u>FSC®</u>	<u>Sale Name</u>	<u>Volume</u>	<u>Value</u>
Clark	Pacific Cascade	99726		RELLESKOP	2,962	\$808,000.00
Ferry	Northeast	100480		Q GIBRALTAR	3,310	\$496,000.00
Snohomish	Northwest	100058		BLUEGRASS	5,684	\$2,068,000.00
Thurston	South Puget	99057	*	BIG RED	6,274	\$1,737,000.00
<b>Total</b>					18,230	\$5,109,000.00

**Region Sales**

<u>County</u>	<u>Region</u>	<u>Agree #</u>	<u>FSC</u>	<u>Sale Name</u>	<u>Volume</u>	<u>Value</u>
Okanogan	Northeast	98554		Q GRANDVIEW	2,166	\$114,000.00
<b>Total</b>					2,166	\$114,000.00



*Scan with your smartphone or tablet to go to the August 2020 timber auction page*







TIMBER NOTICE OF SALE

SALE NAME: RELLESKOP

AGREEMENT NO: 30-99726

AUCTION: August 27, 2020 starting at 10:00 a.m., COUNTY: Clark
Pacific Cascade Region Office, Castle Rock, WA

SALE LOCATION: Sale located approximately 9 miles East of Battle Ground, WA

PRODUCTS SOLD AND SALE AREA:

All timber, except trees marked with blue paint, trees bounded out by yellow "Leave Tree Area" tags, western redcedar, snags, all down timber greater than 24 inches in diameter and all pre-existing stumps, bounded by the following: white "Timber Sale Boundary" tags and private property boundaries marked with pink flagging in Units 1 and 4; white "Timber Sale Boundary" tags, reprod, and the BG-2020 in Unit 2; white "Timber Sale Boundary" tags, and reprod marked with pink flagging in Unit 3,

All forest products above located on part(s) of Sections 30 all in Township 4 North, Range 4 East, Sections 25 and 26 all in Township 4 North, Range 3 East, W.M., containing 114 acres, more or less.

CERTIFICATION: This sale is certified under the Sustainable Forestry Initiative® program Standard (cert no: PwC-SFIFM-513)

ESTIMATED SALE VOLUMES AND QUALITY:

Table with columns: Species, Avg DBH, Ring Count, Total MBF, and MBF by Grade (1P, 2P, 3P, SM, 1S, 2S, 3S, 4S, UT). Rows include Douglas fir, Red alder, and Sale Total.

MINIMUM BID: \$808,000.00 BID METHOD: Sealed Bids

PERFORMANCE SECURITY: \$100,000.00 SALE TYPE: Lump Sum

EXPIRATION DATE: October 31, 2022 ALLOCATION: Export Restricted

BID DEPOSIT: \$80,800.00 or Bid Bond. Said deposit shall constitute an opening bid at the appraised price.

HARVEST METHOD: This sale is estimated to be 100% ground based harvest systems. A detailed felling and yarding plan shall be required prior to any harvest activities. Ground-based yarding is restricted to sustained slopes of 40% or less. For additional harvest requirements, refer to the H-140, H-141 and H-142 clauses in the contract. Falling and Yarding will not be permitted from November 1 to April 30 unless authorized in writing by the Contract Administrator. Bald Eagle Timing Restriction in Unit 3 East of the BG-2020C2A road, no operations will occur January 1 to August 31. See Clause H-142, for additional information

All harvesting, yarding and loading operations are prohibited from 7 pm to 7 am on weekdays and prohibited on weekends and State recognized holidays in Unit 1 and Unit 4.



## TIMBER NOTICE OF SALE

---

**ROADS:** 4.52 stations of required reconstruction. 24.74 stations of optional construction. 2.02 stations of optional reconstruction. 111.25 stations of required prehaul maintenance. 24.76 stations of abandonment, if built. Rock used in accordance with the quantities on the ROCK LIST may be obtained from the BG-2020 Pit (Sec 26 T04N R03E W.M). Rock for construction and pre-haul maintenance used in accordance with the quantities on the ROCK LIST may be obtained from any commercial source at the Purchaser's expense subject to written approval from Contract Administrator. Road construction will not be permitted from October 1 to April 30 unless authorized in writing by the Contract Administrator.

Construction, Reconstruction, Pre-haul Maintenance and Abandonment will be restricted between the hours of 7 PM to 7 AM on BG-2000, BG-2000C, BG-2000D, TJ-1, TJ-2 and Spur-A roads. See Road Plan 1-25 for additional information.

### ACREAGE DETERMINATION

**CRUISE METHOD:** The sale acres were determined by GPS. The sale area was cruised using a variable plot cruise method.

**FEES:** Fees of \$1,000.00 to Thor C. Johnson for the Road Use Permit between Thor C. Johnson and the State, Dated September 15, 2019 due 30 days after the Grantee enters into a timber sale contract. For more information see Road Use Permit. These are in addition to the bid price \$50,354.00 is due on day of sale. \$9.00 per MBF is due upon removal. These are in addition to the bid price.

**SPECIAL REMARKS:** This sale contains an estimated 108 MBF of higher quality DF 2 saw logs and 26 MBF of higher quality DF 3 saw logs, derived from the cruise. See cruise for details.

Bells Mountain Trail, open year-round runs through Unit 3 see Contract Clause H-140 for additional information regarding trail and harvest requirements.

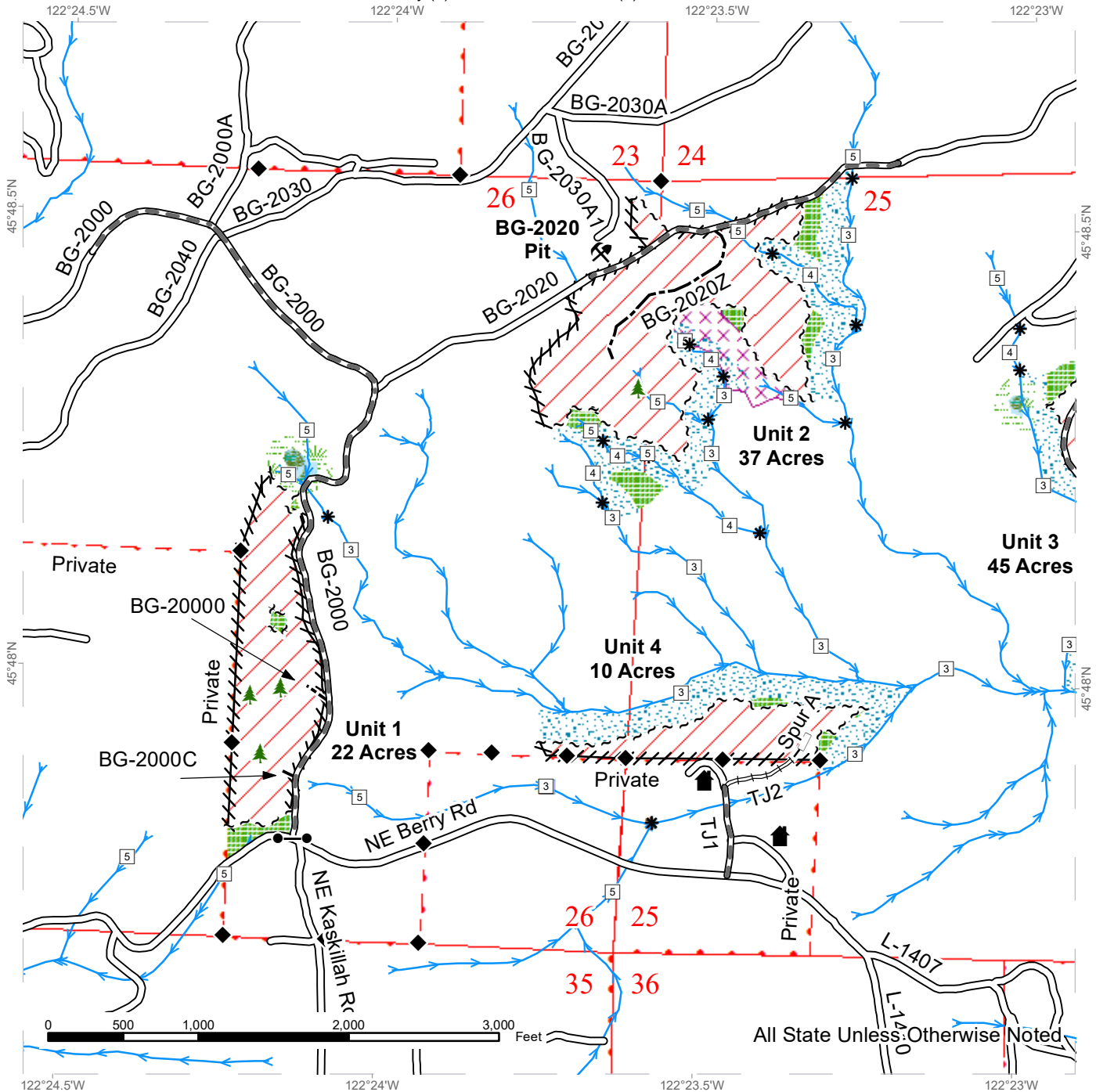
Extreme Hazard Abatement required in Unit 1 and Unit 4. See H-141 and S-020 for additional information.

See driving map for gate locations. PCP 1-1 gate keys may be obtained from the Pacific Cascade Region office.

# TIMBER SALE MAP

**SALE NAME:** RELLESKOP VRH  
**AGREEMENT #:** None  
**TOWNSHIP(S):** T4R3E, T4R4E  
**TRUST(S):** Common School and Indemnity (3), State Forest Transfer (1)

**REGION:** Pacific Cascade Region  
**COUNTY(S):** Clark  
**ELEVATION RGE:** 826-1871



All State Unless Otherwise Noted

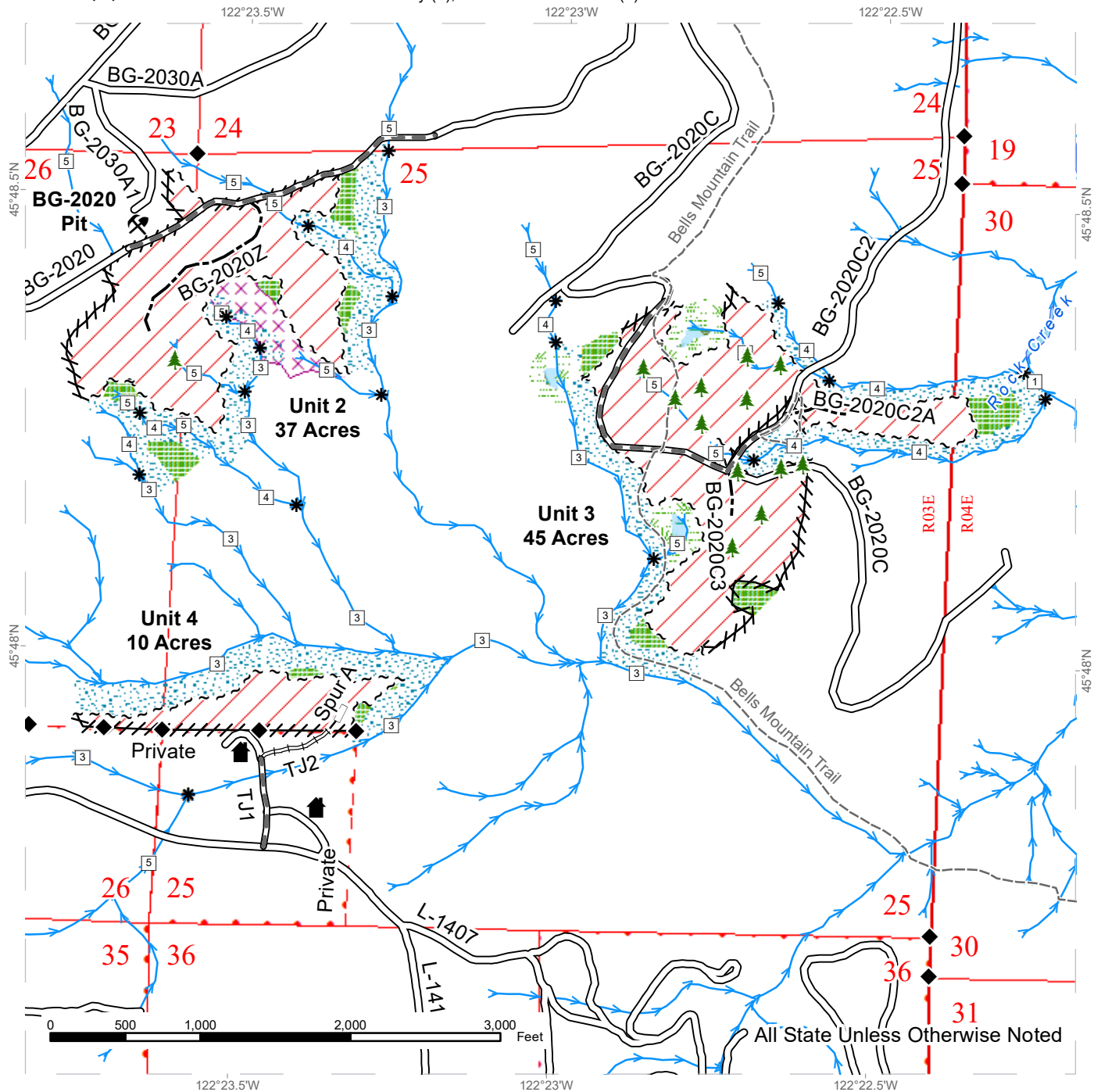
Sale Area	Sale Boundary Tags	Streams
Leave Tree Area	Leave Tree Tags	Stream Type
Riparian Mgt Zone	Flag Line	Stream Type Break
Forested Wetland	Existing Roads	Survey Monument
Wetland Mgt Zone	Required Pre-Haul Maintenance	Gate (PCP 1-1)
Potentially Unstable Slopes	Required Reconstruction	Leave Tree Area <1/4-acre
	Optional Construction	Rock Pit
	Optional Reconstruction	Structure



# TIMBER SALE MAP

**SALE NAME:** RELLESKOP VRH  
**AGREEMENT #:** None  
**TOWNSHIP(S):** T4R3E, T4R4E  
**TRUST(S):** Common School and Indemnity (3), State Forest Transfer (1)

**REGION:** Pacific Cascade Region  
**COUNTY(S):** Clark  
**ELEVATION RGE:** 826-1871



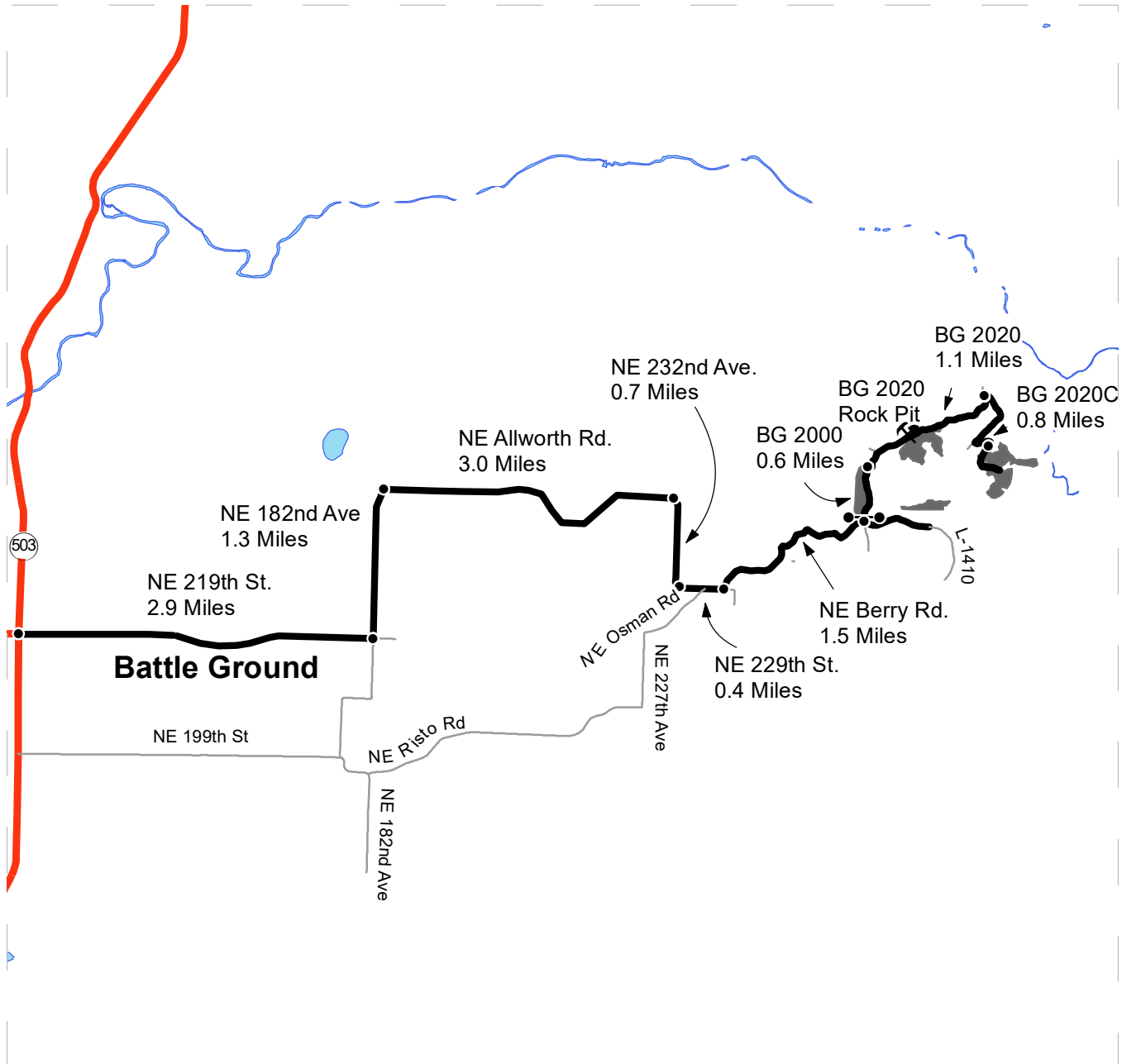
Sale Area	Sale Boundary Tags	Streams
Leave Tree Area	Flag Line	Stream Type
Riparian Mgt Zone	Existing Roads	Stream Type Break
Forested Wetland	Required Pre-Haul Maintenance	Survey Monument
Wetland Mgt Zone	Required Reconstruction	Leave Tree Area <1/4-acre
Potentially Unstable Slopes	Optional Construction	Structure
	Optional Reconstruction	Recreation Trails



# DRIVING MAP

**SALE NAME:** RELLESKOP VRH  
**AGREEMENT#:** None  
**TOWNSHIP(S):** T4R3E, T4R4E  
**TRUST(S):** Common School and Indemnity (3), State Forest Transfer (1)

**REGION:** Pacific Cascade Region  
**COUNTY(S):** Clark  
**ELEVATION RGE:** 826-1871



Map may not be to scale

	Timber Sale Unit
	Haul Route
	Other Road
	Distance Indicator
	Gate (PCP 1-1)
	Rock Pit

**DRIVING DIRECTIONS:**

From State Route 503 at mp 8, turn right (east) on NE 219th. St. (Main St.) for 2.9 miles.  
 Turn north (left) on NE 182nd Ave and follow for 1.3 miles.  
 Turn right (east) on NE Allworth Rd. and follow for 3.0 miles  
 Veer to the right (south) as road becomes NE 232nd St. and follow for 0.7 miles.  
 Turn left (east) on NE 229th St. for 0.4 miles.  
 Turn left (north) on NE Berry Rd. for 1.5 miles.  
 Turn left on BG 2000 (gate).  
 Unit 1 , Located just after the BG 2000 rock pit on the right (south) side of the BG 2020.  
 Unit 2 , Drive 0.6 mile on the BG 2000, veer right on the BG 2020 for 1.1 miles,  
 turn left on the BG 2020C for 0.8 miles.  
 Unit 3, Located on the right (east) side of the BG 2000 just past the gate.  
 Unit 4, Located on the left (west) side of the BG 2000 just past the gate.









TIMBER NOTICE OF SALE

SALE NAME: Q GIBRALTAR

AGREEMENT NO: 30-100480

AUCTION: August 25, 2020 starting at 10:00 a.m., Northeast Region Office, Colville, WA COUNTY: Ferry

SALE LOCATION: Sale located approximately 5 miles east of Republic, WA

PRODUCTS SOLD AND SALE AREA: All conifer species except for ponderosa pine and leave trees banded with purple paint in Units 1, 2, 3, 4, 6, 7, 8, 9, 10, 11, 12, 13, 14, 15, 16, 17, 18 and 19 bounded by white timber sale boundary tags; all right of way timber marked with orange paint

All forest products above located on part(s) of Sections 7, 16 and 17 all in Township 36 North, Range 34 East, Sections 16 all in Township 36 North, Range 33 East, Sections 2, 9, 10, 13, 24 and 26 all in Township 37 North, Range 33 East, W.M., containing 396 acres, more or less.

CERTIFICATION: This sale is certified under the Sustainable Forestry Initiative® program Standard (cert no: PwC-SFIFM-513)

ESTIMATED SALE VOLUMES AND QUALITY:

Table with columns: Species, Avg Ring DBH Count, Total MBF, MBF by Grade (P, SM, 1S, 2S, 3S, 4S, 5S, 6S, UT). Rows include Douglas fir, Larch, Ponderosa pine, and Sale Total.

MINIMUM BID: \$496,000.00 BID METHOD: Sealed Bids

PERFORMANCE SECURITY: \$99,200.00 SALE TYPE: Lump Sum

EXPIRATION DATE: November 15, 2022 ALLOCATION: Export Restricted

BID DEPOSIT: \$49,600.00 or Bid Bond. Said deposit shall constitute an opening bid at the appraised price.

HARVEST METHOD: Rubber tired skidder, Dozer, Track skidder, and Ground based equipment. Falling and Yarding will not be permitted from March 15 to June 1 unless authorized in writing by the Contract Administrator due to spring breakup and from September 1 to November 1 in Units 13 and 14 due to road use permit restrictions.

ROADS: 68.76 stations of required construction. 793.03 stations of required prehaul maintenance. Road construction will not be permitted from March 15 to June 1 unless authorized in writing by the Contract Administrator due to spring breakup and from September 1 to November 1 on E373313E road due to road use permit restrictions. The hauling of forest products will not be permitted from March 15 to June 1 unless authorized in writing by the Contract Administrator due to spring breakup and from September 1 to November 1 on E373313E road due to road use permit restrictions.



## TIMBER NOTICE OF SALE

---

### ACREAGE DETERMINATION

**CRUISE METHOD:** Acreage determined using GPS methods. Acreage shown above is net harvest acres in harvest units. All species: 7.0 - 17.5 inches dbh has minimum top of 4.6 inch dib. All species 17.6 inches and greater dbh have a minimum top dib of 40% of dob at 16 feet or a 6 inch top whichever is greater.

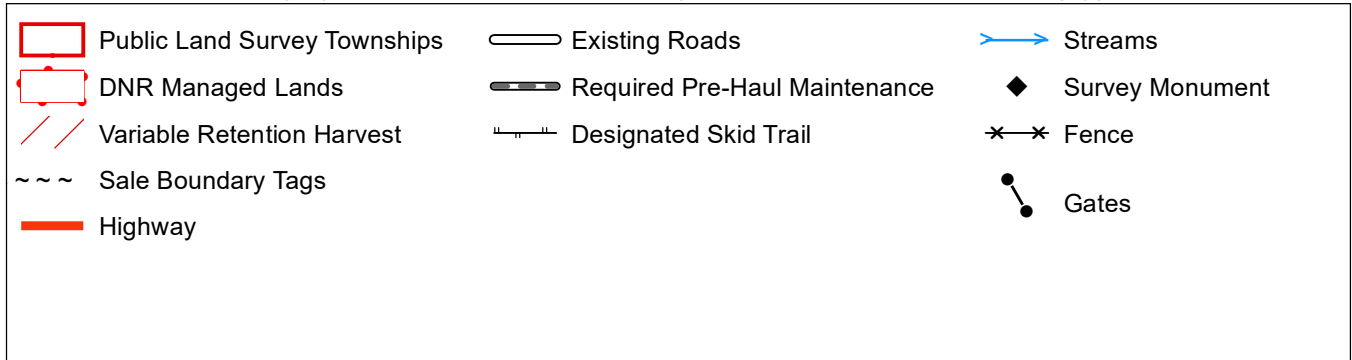
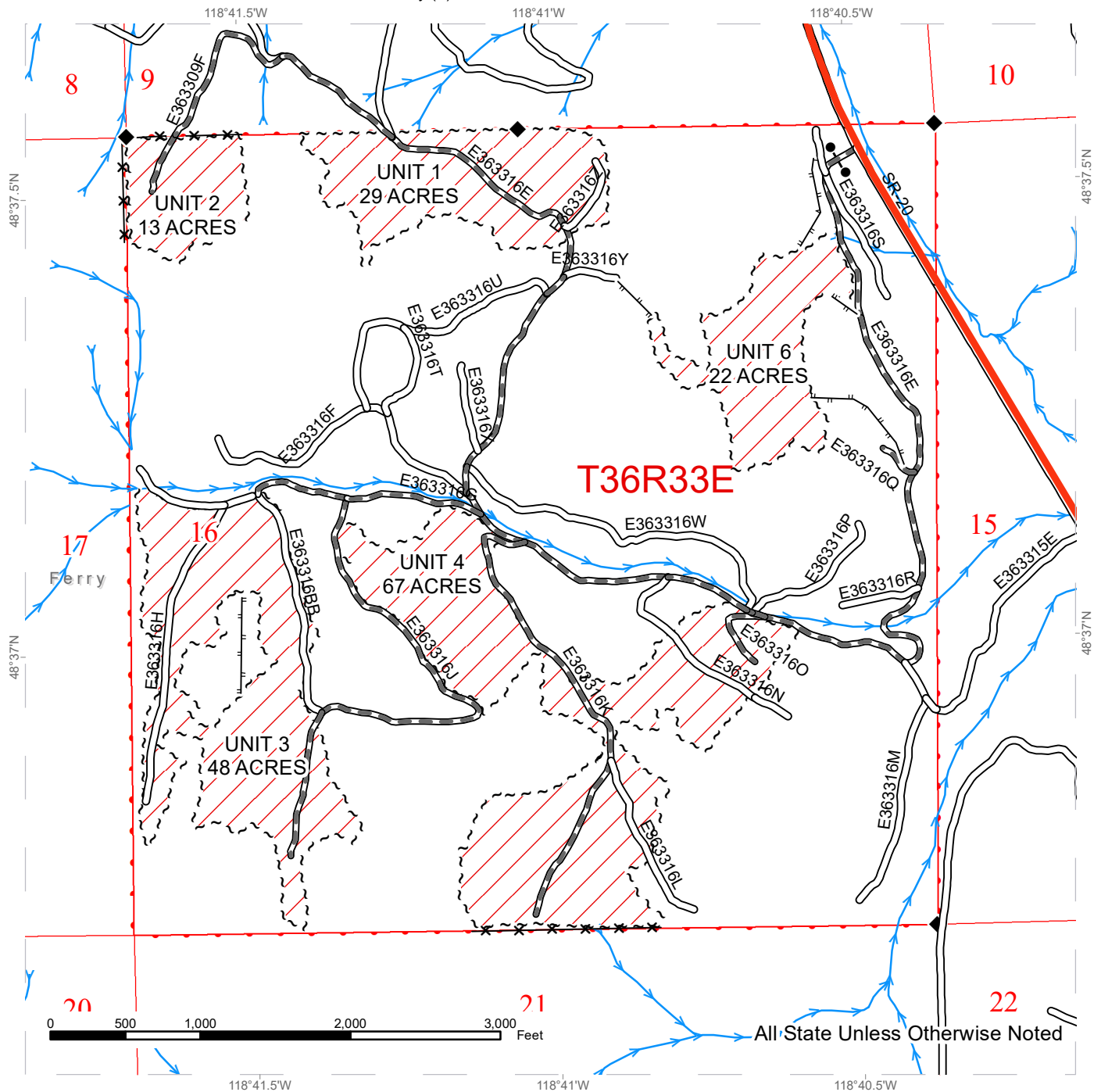
**FEES:** Within 10 days of day of sale, Purchaser shall provide payment for three road use permits in the amount of \$500.00 each and payment for one road use permit in the amount of \$300.00. Purchaser shall provide payment for 1,700 board feet of private right of way timber and for 4,176 board feet of private right of way timber at the purchaser's bid price. \$56,270.00 is due on day of sale. \$9.00 per MBF is due upon removal. These are in addition to the bid price.

**SPECIAL REMARKS:** Locked gate restricts access to Units 1, 2, 3, 4 and 6. Limited access to Units 15, 16, 17, 18 and 19. Contact the Northeast Region Office for access. There is no Unit 5.

# TIMBER SALE MAP

**SALE NAME:** Q GIBRALTAR  
**AGREEMENT #:** 30-100480  
**TOWNSHIP(S):** T36R33E, T36R34E, T37R33E  
**TRUST(S):** Common School and Indemnity (3)

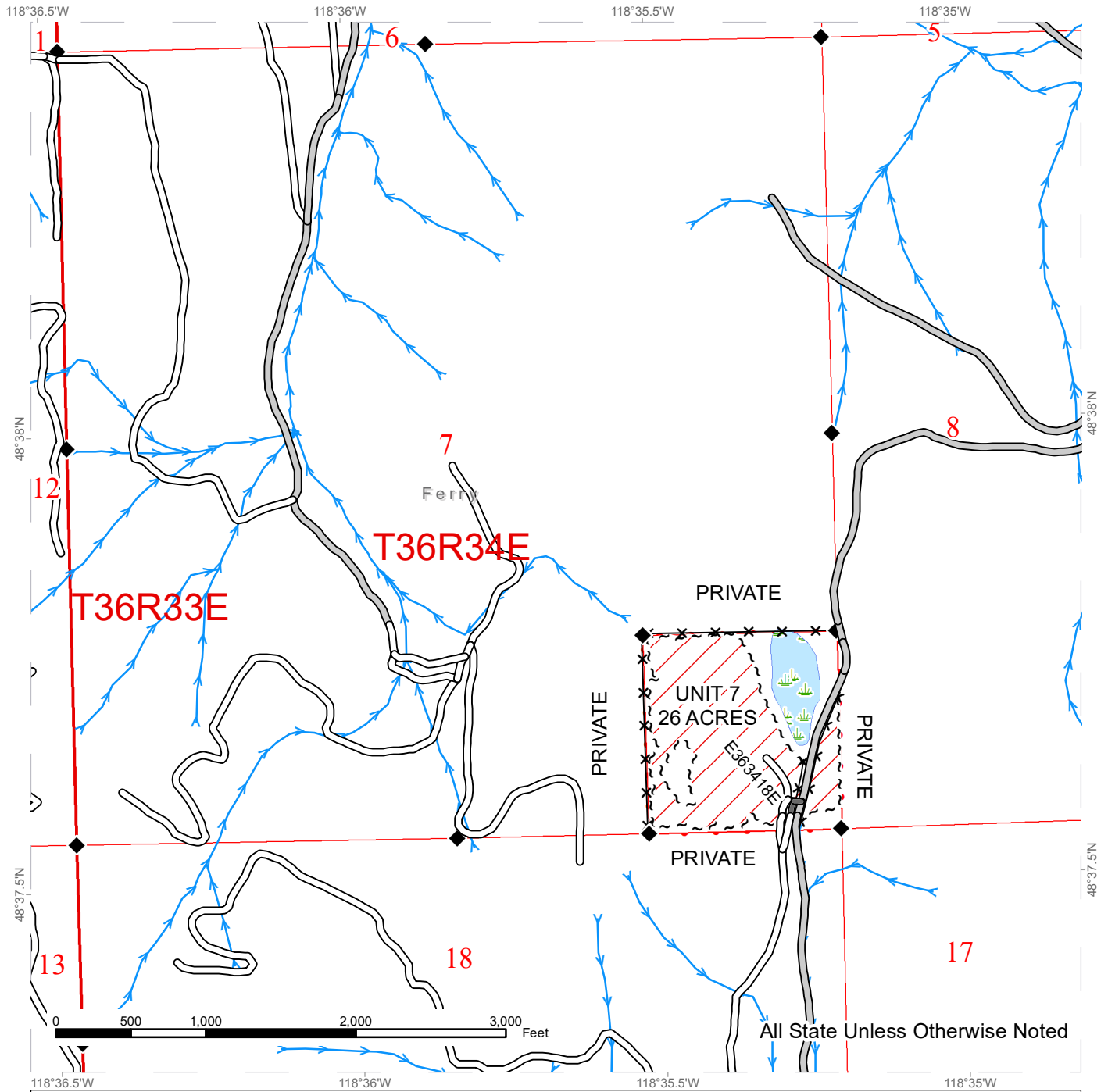
**REGION:** Northeast Region  
**COUNTY(S):** Ferry  
**ELEVATION RGE:** 2800-4520



# TIMBER SALE MAP

**SALE NAME:** Q GIBRALTAR  
**AGREEMENT #:** 30-100480  
**TOWNSHIP(S):** T36R33E, T36R34E, T37R33E  
**TRUST(S):** Common School and Indemnity (3)

**REGION:** Northeast Region  
**COUNTY(S):** Ferry  
**ELEVATION RGE:** 2800-4520

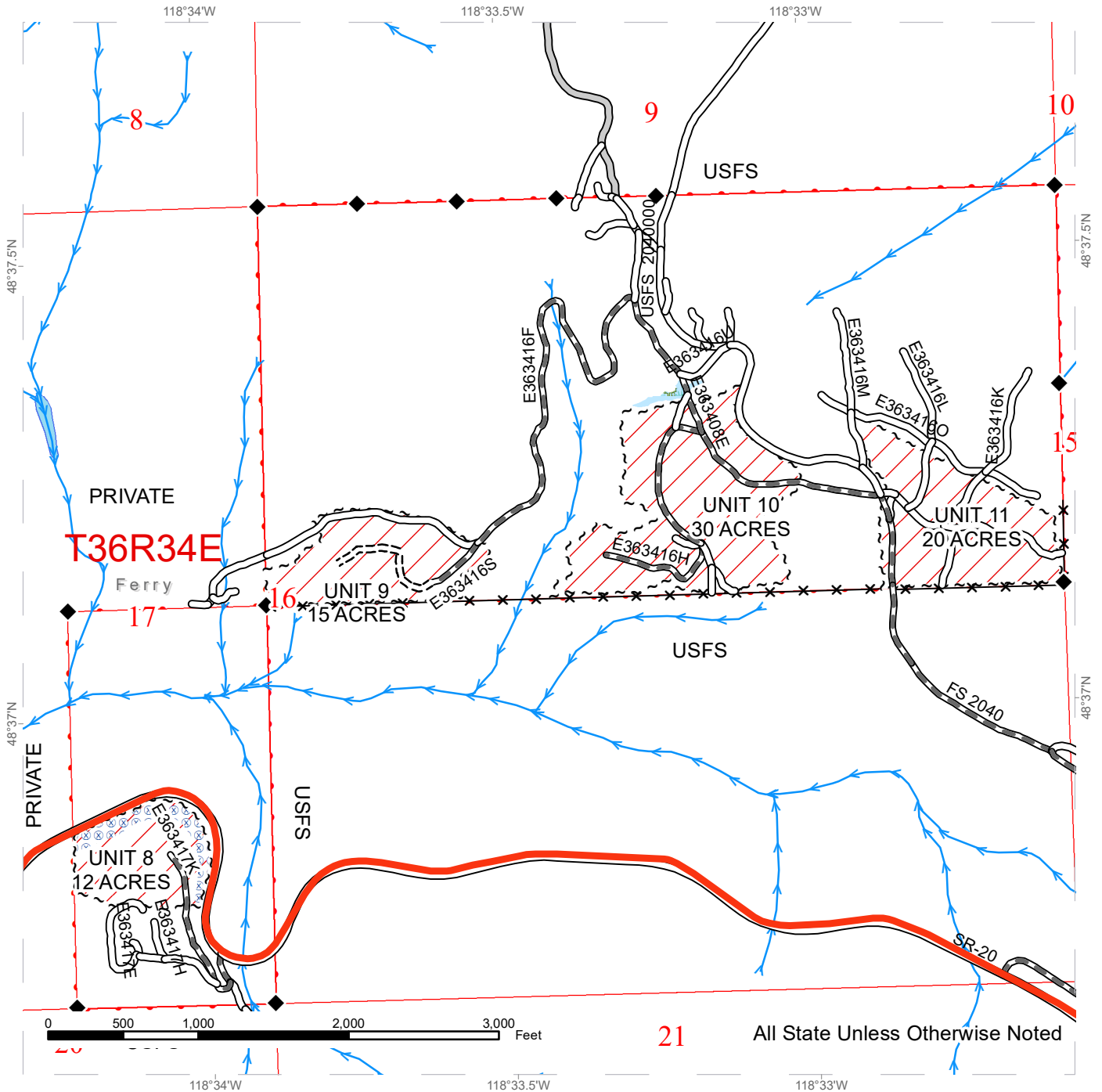


	Public Land Survey Townships		County Road		Streams
	DNR Managed Lands		Existing Roads		Survey Monument
	Variable Retention Harvest		Required Pre-Haul Maintenance		Fence
	Sale Boundary Tags				
	Wetlands - Non-forested				

# TIMBER SALE MAP

**SALE NAME:** Q GIBRALTAR  
**AGREEMENT #:** 30-100480  
**TOWNSHIP(S):** T36R33E, T36R34E, T37R33E  
**TRUST(S):** Common School and Indemnity (3)

**REGION:** Northeast Region  
**COUNTY(S):** Ferry  
**ELEVATION RGE:** 2800-4520



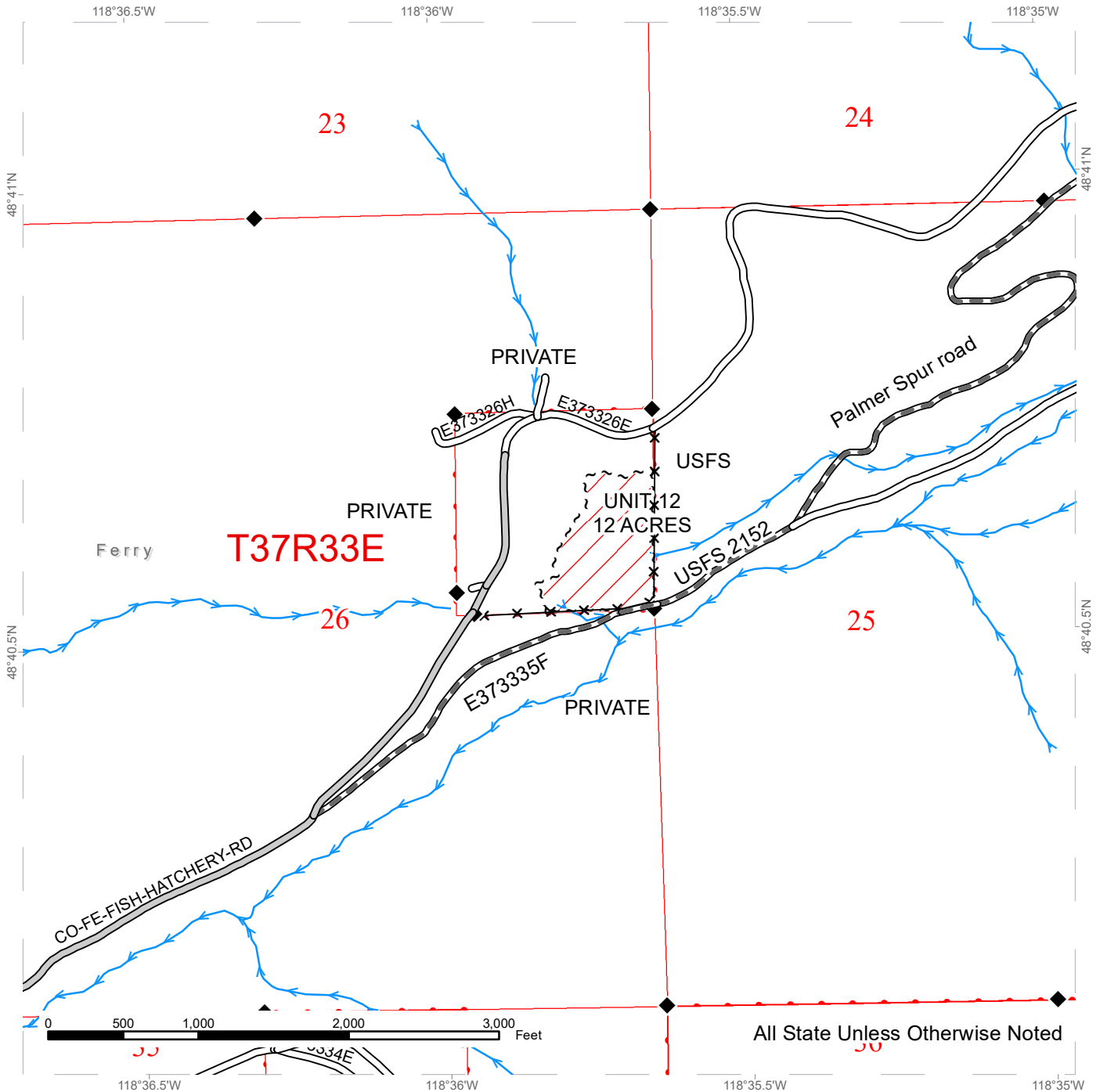
	Public Land Survey Townships		County Road		Streams
	DNR Managed Lands		Existing Roads		Survey Monument
	Variable Retention Harvest		Required Pre-Haul Maintenance		Fence
	Sale Boundary Tags		Required Construction		
	Forested Wetland				
	Hazard Abatement Area				
	Highway				



# TIMBER SALE MAP

**SALE NAME:** Q GIBRALTAR  
**AGREEMENT #:** 30-100480  
**TOWNSHIP(S):** T36R33E, T36R34E, T37R33E  
**TRUST(S):** Common School and Indemnity (3)

**REGION:** Northeast Region  
**COUNTY(S):** Ferry  
**ELEVATION RGE:** 2800-4520



Public Land Survey Townships	County Road	Streams
DNR Managed Lands	Existing Roads	Survey Monument
Variable Retention Harvest	Required Pre-Haul Maintenance	Fence
Sale Boundary Tags		

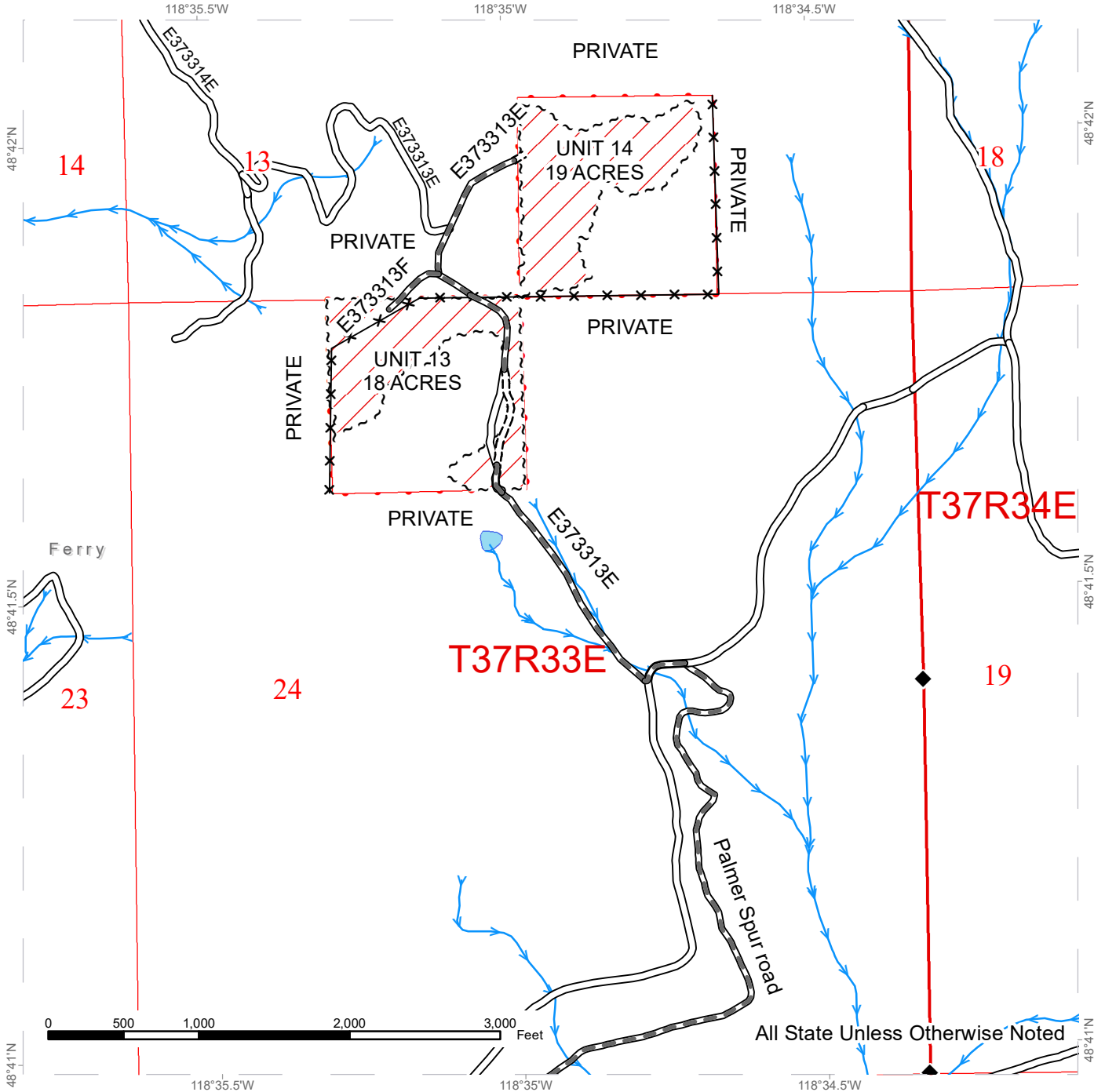




# TIMBER SALE MAP

**SALE NAME:** Q GIBRALTAR  
**AGREEMENT #:** 30-100480  
**TOWNSHIP(S):** T36R33E, T36R34E, T37R33E  
**TRUST(S):** Common School and Indemnity (3)

**REGION:** Northeast Region  
**COUNTY(S):** Ferry  
**ELEVATION RGE:** 2800-4520



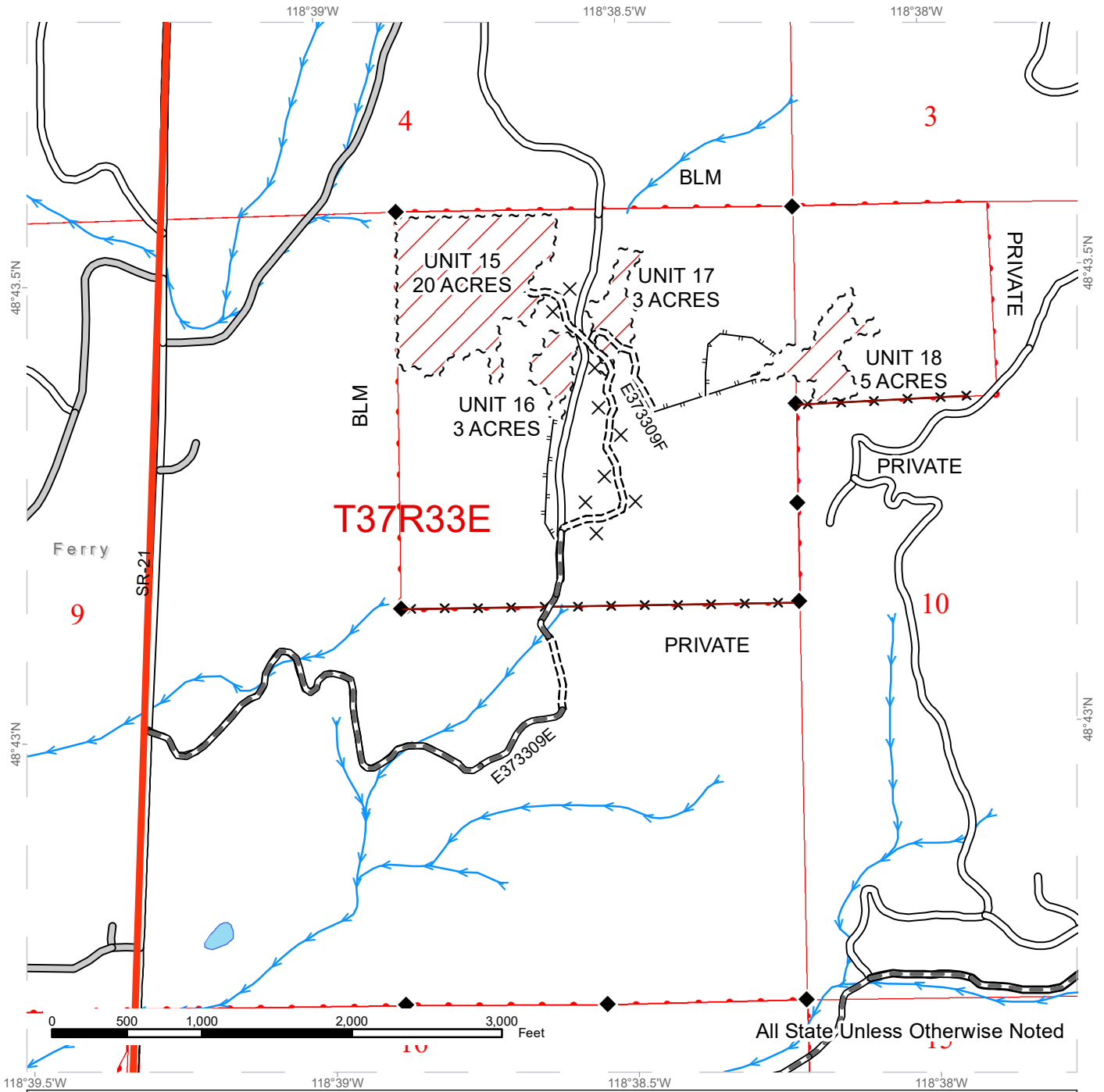
All State Unless Otherwise Noted

Public Land Survey Townships	Existing Roads	Streams
DNR Managed Lands	Required Pre-Haul Maintenance	Survey Monument
Variable Retention Harvest	Required Construction	Fence
Sale Boundary Tags		

# TIMBER SALE MAP

**SALE NAME:** Q GIBRALTAR  
**AGREEMENT #:** 30-100480  
**TOWNSHIP(S):** T36R33E, T36R34E, T37R33E  
**TRUST(S):** Common School and Indemnity (3)

**REGION:** Northeast Region  
**COUNTY(S):** Ferry  
**ELEVATION RGE:** 2800-4520



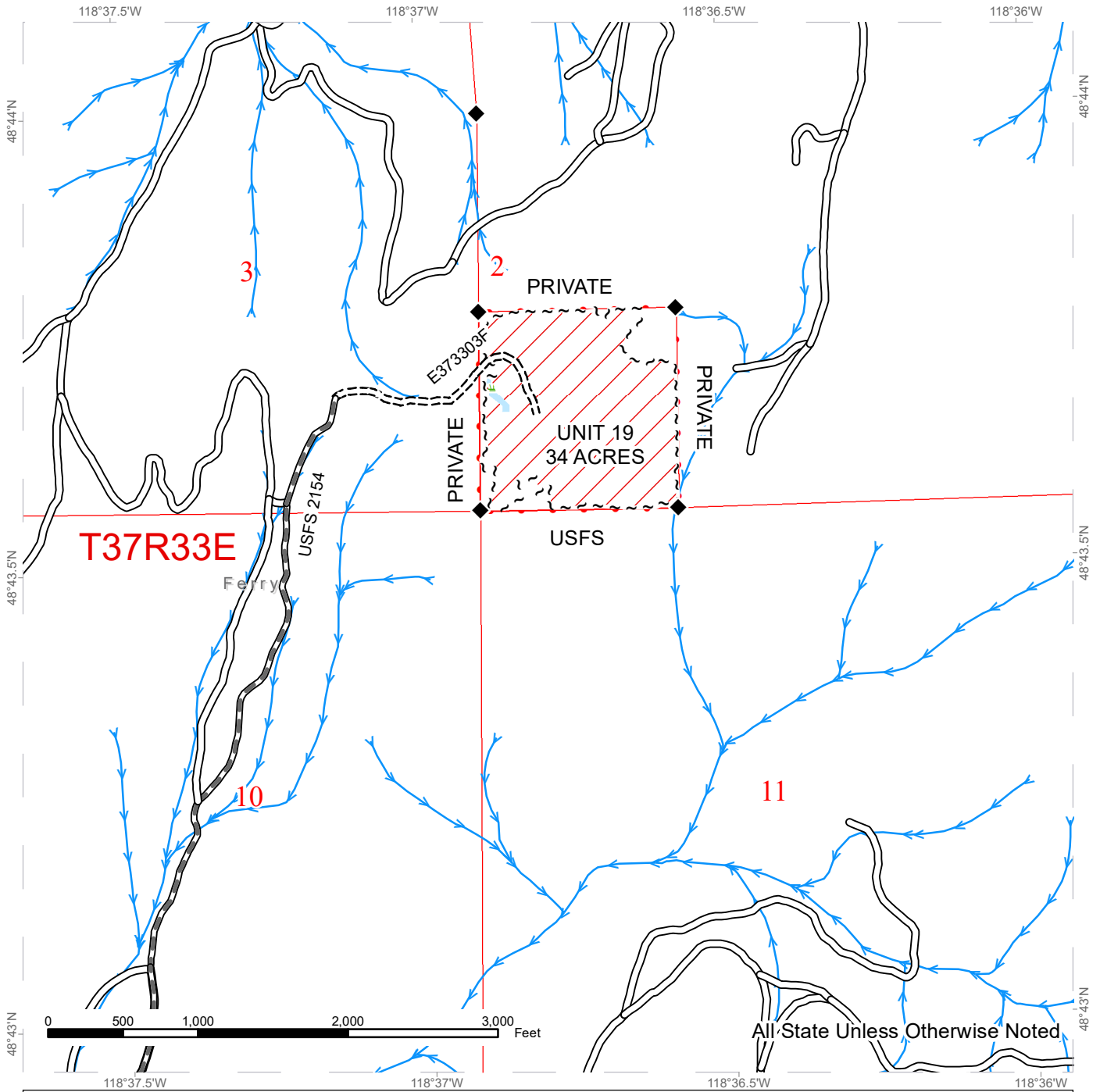
Public Land Survey Townships	County Road	Streams
DNR Managed Lands	Existing Roads	Survey Monument
Variable Retention Harvest	Required Pre-Haul Maintenance	Right of Way Trees = 1 acre
Sale Boundary Tags	Required Construction	Fence
Highway	Designated Skid Trail	

Right of ways trees (orange paint)

# TIMBER SALE MAP

**SALE NAME:** Q GIBRALTAR  
**AGREEMENT #:** 30-100480  
**TOWNSHIP(S):** T36R33E, T36R34E, T37R33E  
**TRUST(S):** Common School and Indemnity (3)

**REGION:** Northeast Region  
**COUNTY(S):** Ferry  
**ELEVATION RGE:** 2800-4520



All State Unless Otherwise Noted

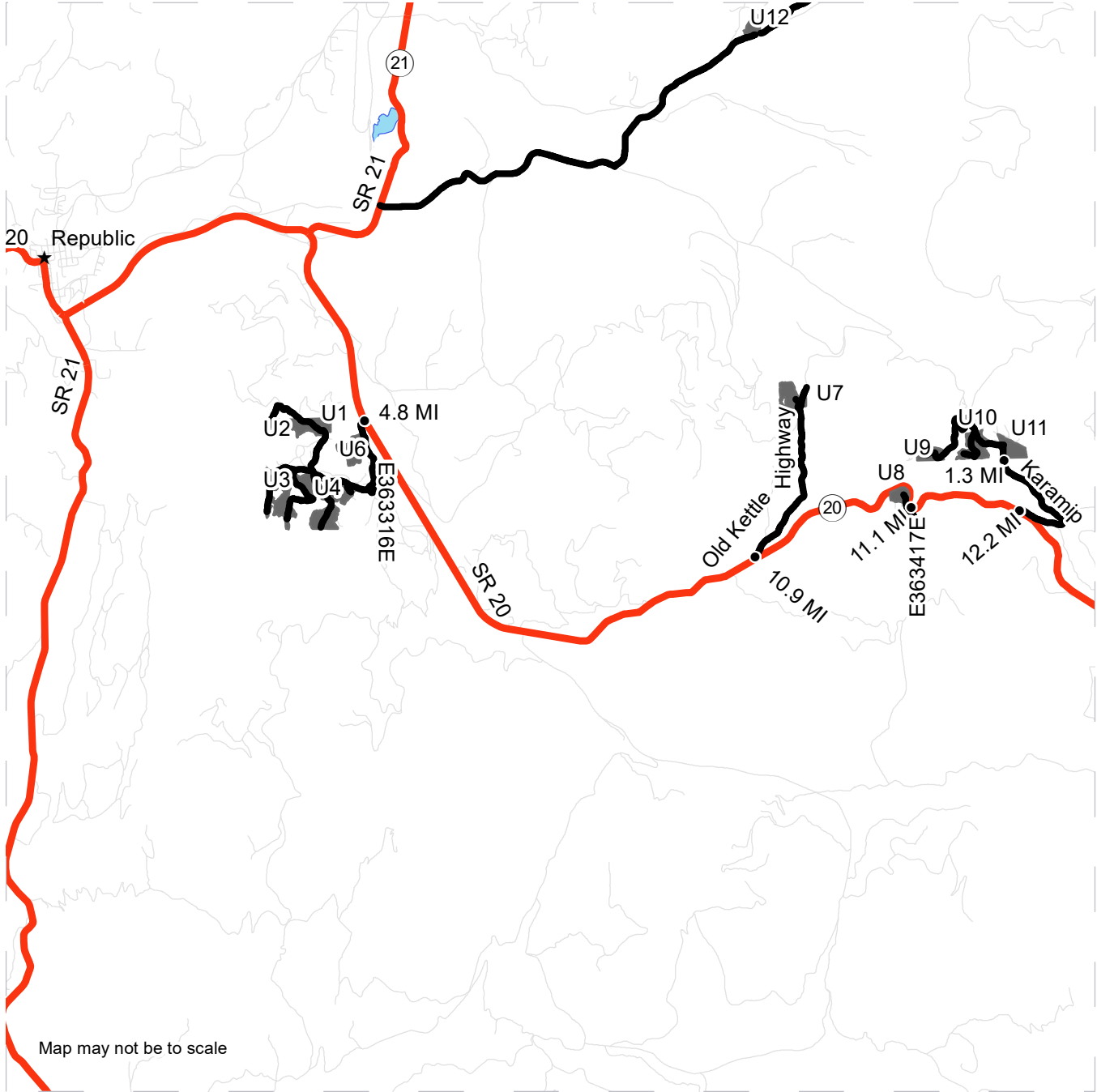
	Public Land Survey Townships		Existing Roads		Streams
	DNR Managed Lands		Required Pre-Haul Maintenance		Survey Monument
	Variable Retention Harvest		Required Construction		
	Sale Boundary Tags				
	Wetlands - Non-forested				



# DRIVING MAP

**SALE NAME:** Q GIBRALTAR  
**AGREEMENT#:** 30-100480  
**TOWNSHIP(S):** T36R33E, T36R34E, T37R33E  
**TRUST(S):** Common School and Indemnity (3)

**REGION:** Northeast Region  
**COUNTY(S):** Ferry  
**ELEVATION RGE:** 2800-4520



Map may not be to scale

- Timber Sale Unit
- Haul Route
- Highway
- Distance Indicator

**DRIVING DIRECTIONS:**

Access units 1, 2, 3, 4, 6, 7, 8, 9, 10, and 11 from Republic, WA via HWY 20. From Republic travel east/south east on HWY 20 for 4.8 miles and turn right onto E363316E to access Units 1, 2, 3, 4, and 6. To access unit 7, travel 10.9 miles on HWY 20 from Republic, turn left onto Old Kettle Falls road, and travel north for 1.5 miles. To access unit 8, travel 11.1 miles from Republic on HWY 20 then turn right onto E363417E road.

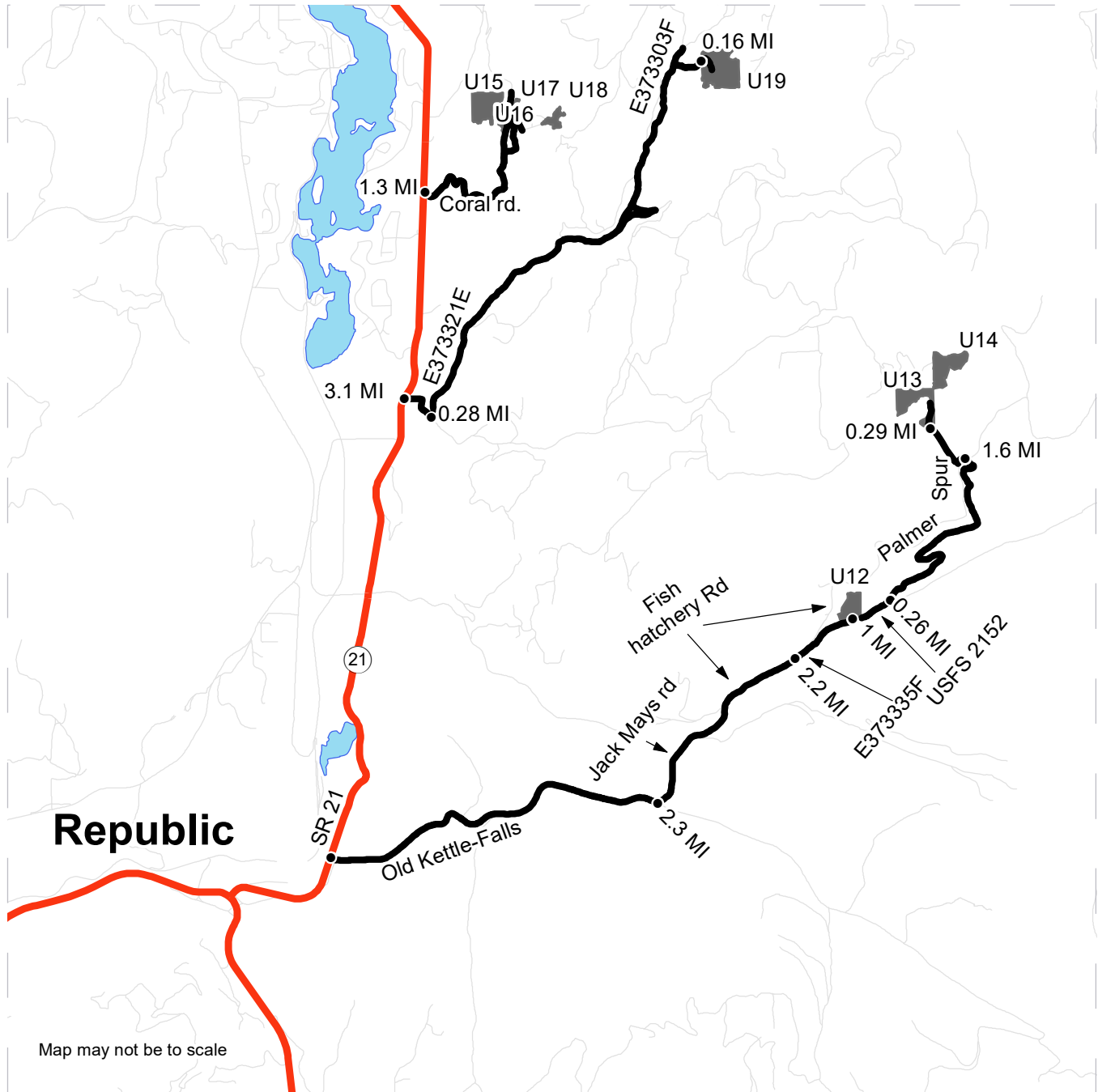
To access units 9, 10, and 11 travel 12.2 miles from Republic on HWY 20, then turn left onto Karamip road. Continue on Karamip road for 1.3 miles



# DRIVING MAP

**SALE NAME:** Q GIBRALTAR  
**AGREEMENT#:** 30-100480  
**TOWNSHIP(S):** T36R33E, T36R34E, T37R33E  
**TRUST(S):** Common School and Indemnity (3)

**REGION:** Northeast Region  
**COUNTY(S):** Ferry  
**ELEVATION RGE:** 2800-4520



Map may not be to scale

<ul style="list-style-type: none"> <li><span style="display: inline-block; width: 15px; height: 10px; background-color: gray; margin-right: 5px;"></span> Timber Sale Unit</li> <li><span style="display: inline-block; width: 20px; border-bottom: 2px solid black; margin-right: 5px;"></span> Haul Route</li> <li><span style="display: inline-block; width: 20px; border-bottom: 2px solid red; margin-right: 5px;"></span> Highway</li> <li><span style="display: inline-block; width: 5px; height: 5px; border-radius: 50%; border: 1px solid black; margin-right: 5px;"></span> Distance Indicator</li> </ul>	<p><b><u>DRIVING DIRECTIONS:</u></b></p> <p>Access units 12, 13, 14, from Republic, WA via HWY 21. To access unit 12 travel east for 2.6 miles from Republic, then turn left onto HWY 21. Travel 0.08 miles then turn right onto Old Kettle Falls road. Continue for 2.3 miles then turn left onto Jack Mays Pride Rd (turn into Fish Hatchery Rd) and continue for 2.2 miles to the E373335F road turn right onto the E373335F continue 1 mile to unit 12 . To access units 13 and 14 from Unit 12, Continue on E373335F road (turns into USFS 2152 rd.) for 0.26 miles then turn left onto Palmer Spur road. Continue on Palmer Spur road for 1.6 miles. Turn left onto E373326E road then turn right onto E373313E rd. Continue for 0.29 miles.</p>
----------------------------------------------------------------------------------------------------------------------------------------------------------------------------------------------------------------------------------------------------------------------------------------------------------------------------------------------------------------------------------------------------------------------------------------------------------------------------------------------------------------------------------------------------------------------------------------------------------------------	--------------------------------------------------------------------------------------------------------------------------------------------------------------------------------------------------------------------------------------------------------------------------------------------------------------------------------------------------------------------------------------------------------------------------------------------------------------------------------------------------------------------------------------------------------------------------------------------------------------------------------------------------------------------------------------------------------------------------------------------------------









TIMBER NOTICE OF SALE

SALE NAME: BLUEGRASS

AGREEMENT NO: 30-100058

AUCTION: August 26, 2020 starting at 10:00 a.m., COUNTY: Snohomish Northwest Region Office, Sedro Woolley, WA

SALE LOCATION: Sale located approximately 1 miles west of Darrington, WA.

PRODUCTS SOLD AND SALE AREA:

All timber bounded by white timber sale boundary tags, property lines, pink flag line and the LF-ML Road, except cedar salvage (cedar snags, preexisting dead and down cedar trees and cedar logs), trees marked with blue paint on the bole and root collar and forest products tagged out by yellow leave tree area tags in Unit #1.

All timber bounded by white timber sale boundary tags and pink flag line, except cedar salvage (cedar snags, preexisting dead and down cedar trees and cedar logs), trees marked with blue paint on the bole and root collar and forest products tagged out by yellow leave tree area tags in Unit #2.

All timber bounded by white timber sale boundary tags, property lines, pink flag line and the SF-ML, SF-03 and SF-0301 roads, except cedar salvage (cedar snags, preexisting dead and down cedar trees and cedar logs), trees marked with blue paint on the bole and root collar and forest products tagged out by yellow leave tree area tags in Unit #3.

The above described products

All forest products above located on part(s) of Sections 15 and 16 all in Township 32 North, Range 9 East, Sections 10 and 11 all in Township 32 North, Range 8 East, W.M., containing 154 acres, more or less.

CERTIFICATION: This sale is certified under the Sustainable Forestry Initiative® program Standard (cert no: PwC-SFIFM-513)

ESTIMATED SALE VOLUMES AND QUALITY:

Table with columns: Species, Avg DBH, Ring Count, Total MBF, and MBF by Grade (1P, 2P, 3P, SM, 1S, 2S, 3S, 4S, UT). Rows include Douglas fir, Hemlock, Red cedar, Maple, Cottonwood, and Sale Total.

MINIMUM BID: \$2,068,000.00 BID METHOD: Sealed Bids

PERFORMANCE SECURITY: \$100,000.00 SALE TYPE: Lump Sum

EXPIRATION DATE: March 31, 2023 ALLOCATION: Export Restricted

BID DEPOSIT: \$206,800.00 or Bid Bond. Said deposit shall constitute an opening bid at the appraised price.



## TIMBER NOTICE OF SALE

---

**HARVEST METHOD:** Cable OR tethered equipment (See H-141 for restrictions); tracked based equipment on sustained slopes 35% or less; self-leveling equipment on sustained slopes 55% or less (See H-141 for restrictions); Falling and Yarding will not be permitted from November 1 to March 31 unless authorized in writing by the Contract Administrator (THIS PERTAINS TO GROUND-BASED EQUIPMENT ONLY) to reduce soil damage and erosion.

**ROADS:** 33.75 stations of required construction. 50.06 stations of optional construction. 158.65 stations of required prehaul maintenance. 4.08 stations of abandonment. 50.06 stations of abandonment, if built.

Rock may be obtained from the following sources on State land at no charge to the Purchaser: 7 Upp Gravel Pit at station 13+45 of the LF-ML Road. Hoglund Gravel Pit at station 12+00 of the SF-ML Road.

Development of existing rock sources will involve clearing, stripping and processing rock to generate pit run rock.

An estimated total quantity of rock needed for this proposal: 4,788 cubic yards of pit run rock.

Road work and the hauling of rock will not be permitted from November 1 to March 31 unless authorized in writing by the Contract Administrator to reduce soil damage and siltation. The hauling of forest products will not be permitted from November 1 to March 31 unless authorized in writing by the Contract Administrator to reduce soil damage and siltation.

### ACREAGE DETERMINATION

**CRUISE METHOD:** Acres determined by GPS traverse. Cruise was conducted via variable plot sample type. See Cruise Narrative for further details. Shapefiles of units are available upon request after the BNR meeting in which the sale is presented.

**FEES:** \$96,628.00 is due on day of sale. \$9.00 per MBF is due upon removal. These are in addition to the bid price.

**SPECIAL REMARKS:**

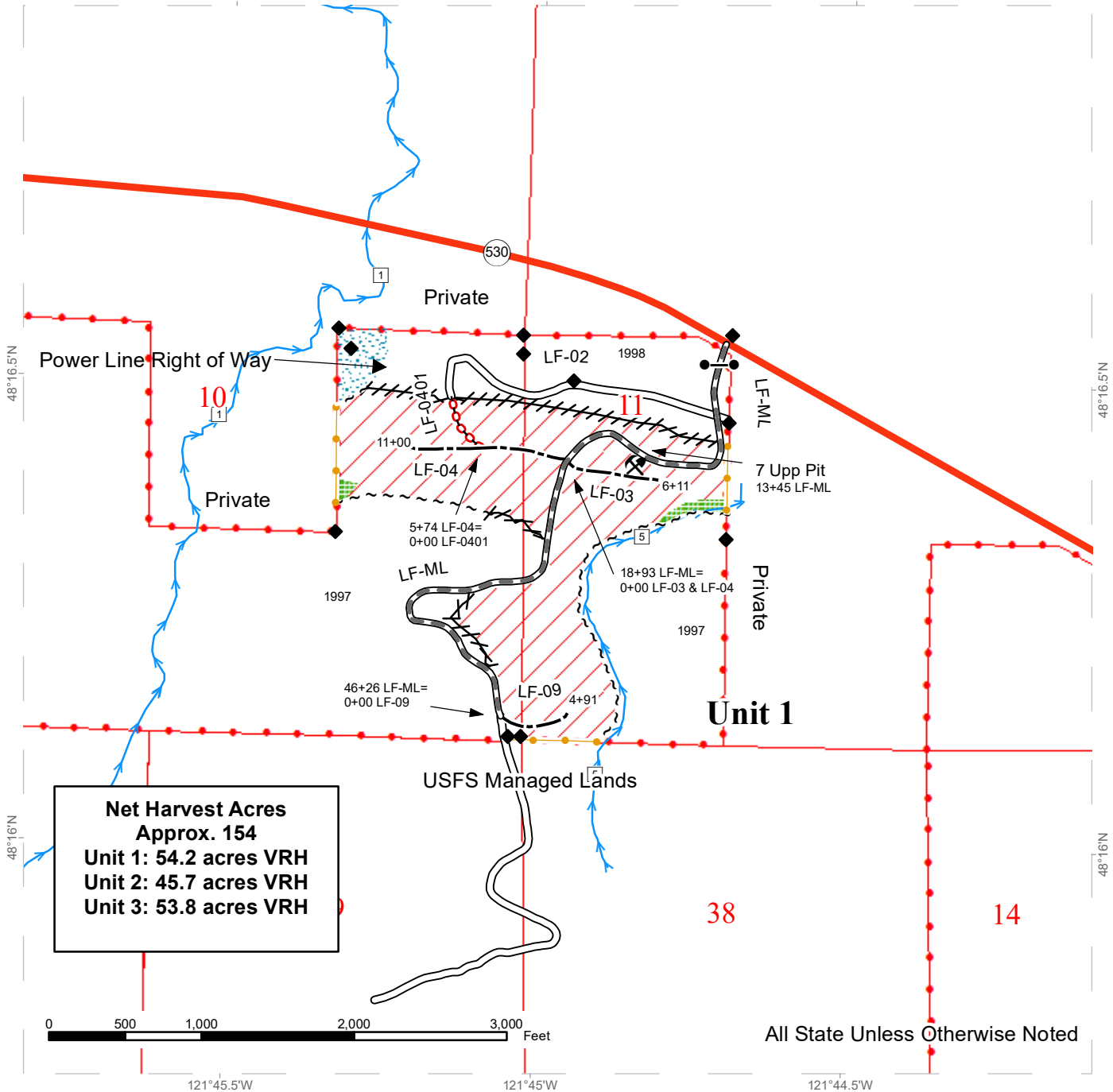
1. Trees marked with red paint and yellow "T" represent the last take tree along property line boundaries.
2. HQ DF noted within the sale area. See cruise for further details (approximately 1,038 mbf of the above listed DF 2S is deemed high quality by the Department).
3. Douglas-fir poles were noted within the sale area. No formal cruise was conducted for cedar poles.
4. The proposal area was made available for bark stripping to local tribes. Western redcedar trees may have been peeled within sale area.
5. The sale area has been previously thinned.

# TIMBER SALE MAP

**SALE NAME:** BLUEGRASS VRH  
**AGREEMENT #:** 30-100058  
**TOWNSHIP(S):** T32R8E & T32R9E  
**TRUST(S):** Common School and Indemnity (3), Scientific School (10), State Forest Transfer (1)

**REGION:** Northwest Region  
**COUNTY(S):** Snohomish  
**ELEVATION RGE:** 430-760

121°45.5'W 121°45'W 121°44.5'W



**Net Harvest Acres  
 Approx. 154**  
**Unit 1: 54.2 acres VRH**  
**Unit 2: 45.7 acres VRH**  
**Unit 3: 53.8 acres VRH**

All State Unless Otherwise Noted

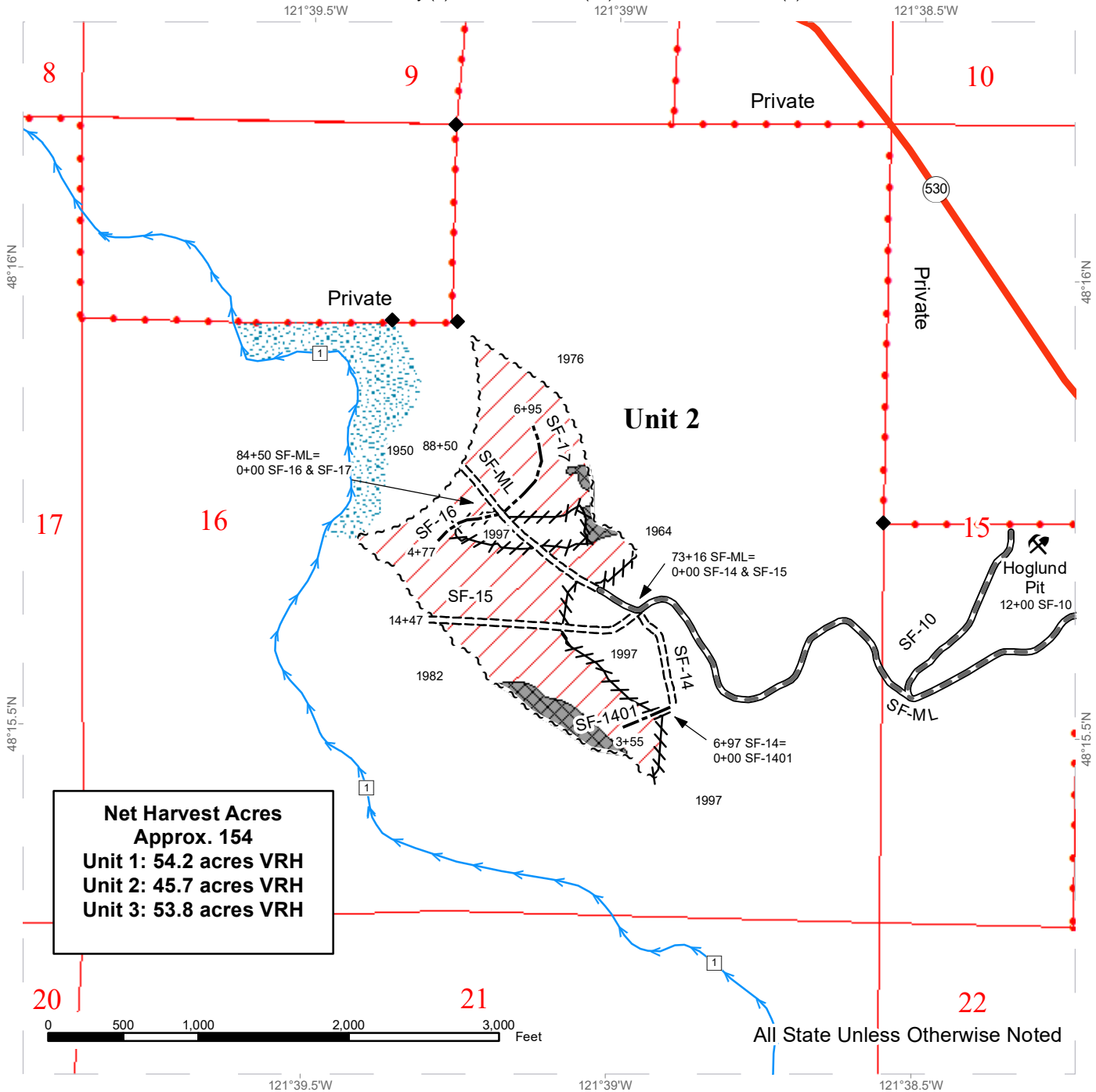
	Variable Retention Harvest		Streams		Found Survey Monuments
	Leave Tree Area		Gate		Rock Pit
	No-cut RMZ		DNR Managed Lands		Sale Boundary Tags
	Existing Roads		Take / Removal Trees		Flag Line
	Required Pre-Haul Maintenance				
	Optional Construction				
	Required Abandonment				



# TIMBER SALE MAP

**SALE NAME:** BLUEGRASS VRH  
**AGREEMENT #:** 30-100058  
**TOWNSHIP(S):** T32R8E & T32R9E  
**TRUST(S):** Common School and Indemnity (3), Scientific School (10), State Forest Transfer (1)

**REGION:** Northwest Region  
**COUNTY(S):** Snohomish  
**ELEVATION RGE:** 430-760



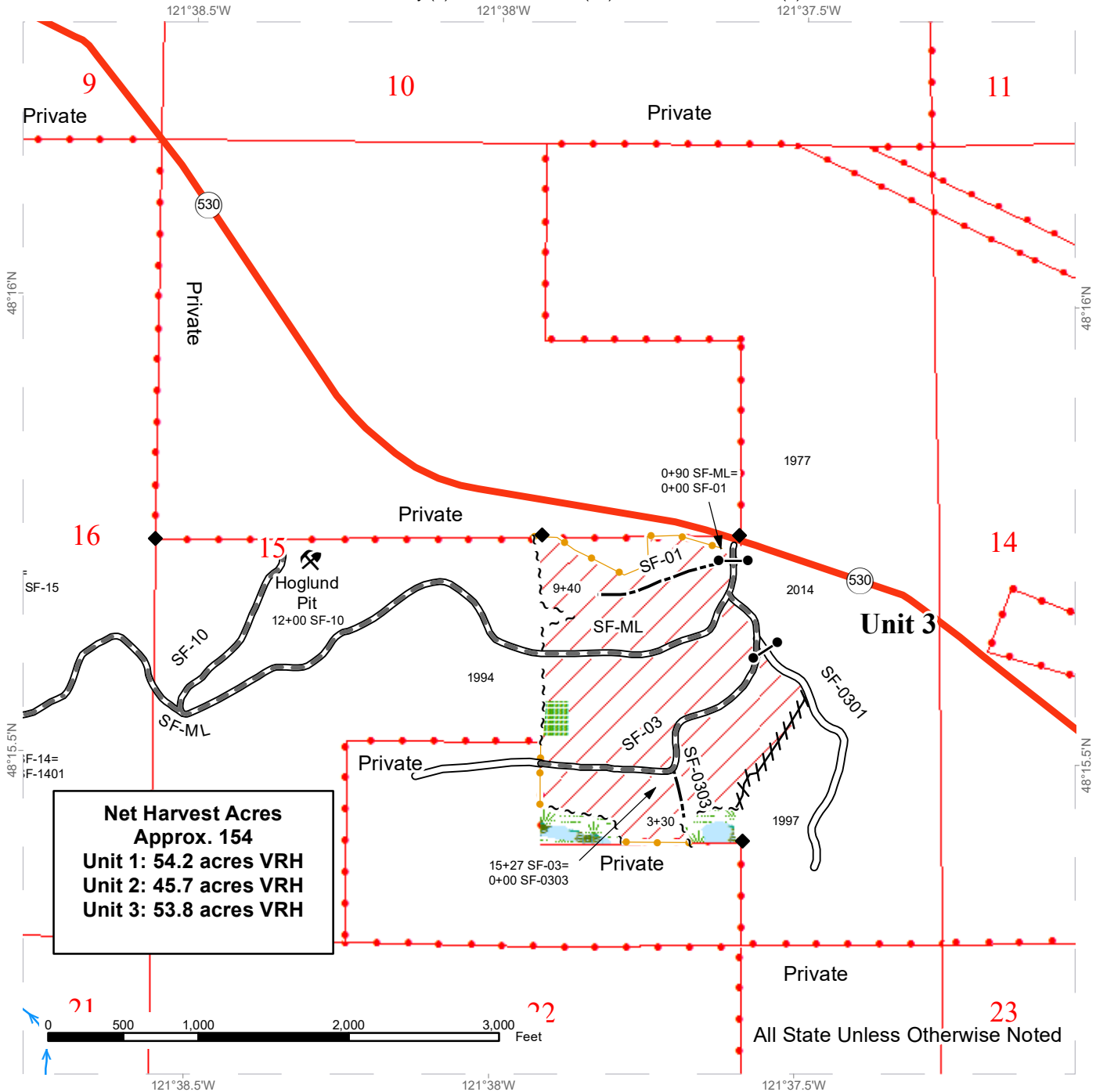
**Net Harvest Acres  
 Approx. 154**  
**Unit 1: 54.2 acres VRH**  
**Unit 2: 45.7 acres VRH**  
**Unit 3: 53.8 acres VRH**

Variable Retention Harvest	Rock Pit
Non-Tradeable Leave Tree Area	DNR Managed Lands
No-cut RMZ	Sale Boundary Tags
Required Pre-Haul Maintenance	Flag Line
Required Construction	Found Survey Monuments
Optional Construction	
Streams	

# TIMBER SALE MAP

**SALE NAME:** BLUEGRASS VRH  
**AGREEMENT #:** 30-100058  
**TOWNSHIP(S):** T32R8E & T32R9E  
**TRUST(S):** Common School and Indemnity (3), Scientific School (10), State Forest Transfer (1)

**REGION:** Northwest Region  
**COUNTY(S):** Snohomish  
**ELEVATION RGE:** 430-760



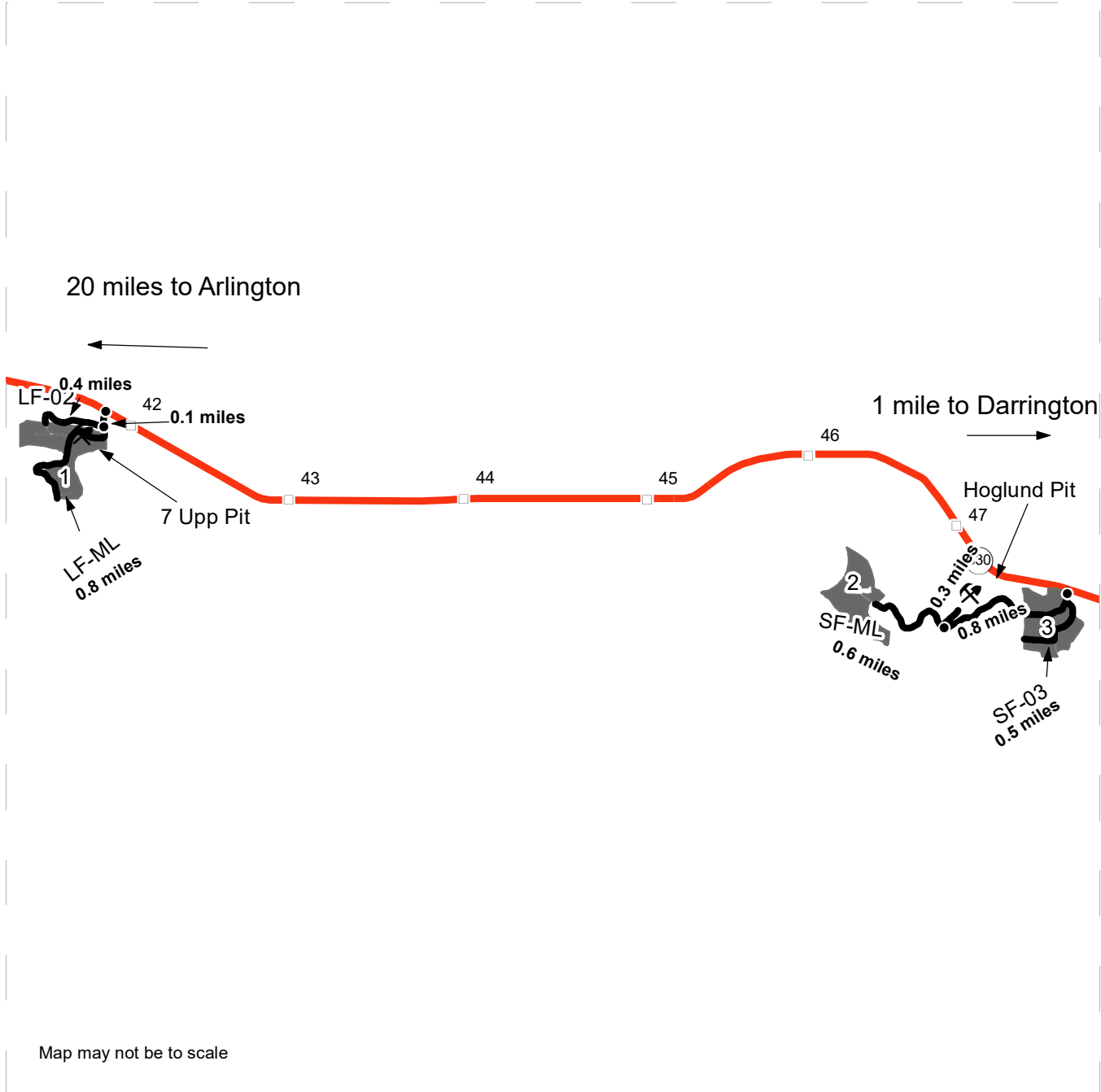
	Variable Retention Harvest		Streams		Found Survey Monuments
	Leave Tree Area		Gate		Rock Pit
	Forested Wetland		DNR Managed Lands		Sale Boundary Tags
	No-cut WMZ		Take / Removal Trees		Flag Line
	Existing Roads		Optional Construction		
	Required Pre-Haul Maintenance				



# DRIVING MAP

**SALE NAME:** BLUEGRASS VRH  
**AGREEMENT#:** 30-100058  
**TOWNSHIP(S):** T32R8E & T32R9E  
**TRUST(S):** Common School and Indemnity (3), Scientific School (10), State Forest Transfer (1)

**REGION:** Northwest Region  
**COUNTY(S):** Snohomish  
**ELEVATION RGE:** 430-760



Map may not be to scale

#	Timber Sale Unit
—	Haul Route
□	Milepost Markers
•	Distance Indicator
⚡	Rock Pit

**DRIVING DIRECTIONS:**

From Arlington, WA travel 20.6 miles east on WA 530 (past mile 41) to the LF-ML (F1-3 lock)  
**UNIT 1**

Turn right onto the LF-ML for 0.1 miles  
 Access Unit 1 via continuing straight on the LF-ML or turning right onto the LF-02.  
 On the LF-ML the sale is along the next 0.8 miles of road (7 Upp Pit on South side of road), while the LF-02 runs parallel to the sale until its end at 0.4 miles.

**UNITS 2 & 3**

Continue east on WA 530, past the LF-ML, for 5.9 miles (past mile 47) to the SF-ML (F1-3 lock).  
 From the start of the SF-ML, Unit 3 is on the west side of the road.  
 Within 0.1 miles of the gate is the intersection with the LF-03, which also goes into Unit 3.  
 From the intersection of the SF-03, travel 0.8 miles to the SF-10.  
 Use the SF-10 to access the Hoglund Pit.  
 Travel 0.6 miles from the intersection of the SF-10 to access Unit 2.





TIMBER NOTICE OF SALE

SALE NAME: BIG RED

AGREEMENT NO: 30-099057

AUCTION: August 25, 2020 starting at 10:00 a.m., COUNTY: Thurston South Puget Sound Region Office, Enumclaw, WA

SALE LOCATION: Sale located approximately 13 miles west of Olympia.

PRODUCTS SOLD AND SALE AREA:

All timber, except leave trees bounded out by yellow leave tree area tags, snags, and down timber existing more than 5 years from the day of sale, bounded by the following: white Timber Sale Boundary tags, and the KC-2000 and KC-2100 roads in Unit #1; white Timber Sale Boundary tags, timber type change marked with pink flagging, and the B-6000 Road in Unit #2; white Timber Sale Boundary tags, underground gas pipeline right-of-way marked with pink flagging, and the KC-Line and KC-2000 Road in Unit #3; white Timber Sale Boundary tags, underground gas pipeline right-of-way marked with pink flagging, and the KC-Line, KC-1000 and KC-1001 roads in Unit #4; white Timber Sale Boundary tags, and the KC-1000 and A-5000 roads in Unit #5; white Timber Sale Boundary tags, and the A-5000 and A-5030 roads in Unit #6;

All forest products above located on part(s) of Sections 16, 21, 22, 23 and 26 all in Township 18 North, Range 4 West, W.M., containing 154 acres, more or less.

CERTIFICATION: This sale is certified under the Sustainable Forestry Initiative® program Standard (cert no: PwC-SFIFM-513) and FSC 100% raw materials under the Forest Stewardship Council® Standard (cert no: BV-FM/COC-080501). \*Only Units #2 and #3 are FSC Certified.

ESTIMATED SALE VOLUMES AND QUALITY:

Table with columns: Species, Avg DBH, Ring Count, Total MBF, and MBF by Grade (1P, 2P, 3P, SM, 1S, 2S, 3S, 4S, UT). Rows include Douglas fir, Hemlock, Red alder, Red cedar, Spruce, and Sale Total.

MINIMUM BID: \$1,737,000.00 BID METHOD: Sealed Bids

PERFORMANCE SECURITY: \$100,000.00 SALE TYPE: Lump Sum

EXPIRATION DATE: October 31, 2022 ALLOCATION: Export Restricted

BID DEPOSIT: \$173,700.00 or Bid Bond. Said deposit shall constitute an opening bid at the appraised price.

HARVEST METHOD: Harvesting activities are estimated to be 48 percent cable and 52 percent ground based harvest. Cable and cable-tethered equipment allowed on all slopes. Ground based equipment is limited to tracked equipment, with non-tethered self-leveling equipment limited to sustained slopes of 55 percent or less, all other tracked equipment limited to sustained slopes that are 45 percent or less. Rubber tired skidders not allowed, except 6-wheeled rubber tired skidders with over-the-tire tracks spanning both sets of rear tires are



## TIMBER NOTICE OF SALE

allowed in all units on sustained slopes that are 45 percent or less. Yarding may be restricted during wet weather if rutting becomes excessive, per clause H-017.

### **ROADS:**

9.15 stations of optional construction. 511.83 stations of required prehaul maintenance. 50.20 stations of required post haul maintenance. 9.15 stations of abandonment, if constructed. Purchaser maintenance on the KC-Line within Unit #4, the KC-1000 Road within Unit #3, Unit #4, and Unit #5, the KC-1001, KC-1002, KC-2000, KC-2010, KC-2100, B-6000A roads, the B-6000 Road within Unit #2, the A-5000 Road within Unit #5 and Unit #6, and the A-5030 Road. Designated maintenance on all other roads used.

Rock for this proposal may be obtained from the State owned Stinkfoot Quarry, as well as from existing stockpiles at the State owned Five Forks Quarry per Road Plan 6-3, at no cost to the Purchaser or any commercial rock source at the Purchaser's expense.

Rock exploration is required in the Stinkfoot Quarry per Road Plan 6-13. Purchaser is required to provide a stockpile of 3,000 cy of 2 1/2 inch minus in the Stinkfoot Quarry per Road Plan 6-65.

The construction and/or reconstruction of any roads will not be permitted from November 1 to April 30, nor on weekends or State recognized holidays, unless authority to do so is granted, in writing, by the Contract Administrator. If permission is granted to operate from November 1 to April 30, a maintenance plan is required per Road Plan clause 1-26.

The hauling of forest products will not be permitted from November 1 to April 30, nor on weekends or State recognized holidays, unless authorized in writing by the Contract Administrator. If permission is granted to operate from November 1 to April 30, preventative measures may be required to protect water, soil, roads and other forest assets.

### **ACREAGE DETERMINATION**

**CRUISE METHOD:** Unit acreage was determined by traversing boundaries by GPS in all units and length times width was used to determine existing road acres in Units #1, #3, and #5. GPS data files are available at DNR's website for timber sale auction packets. See cruise narrative for cruise method.

**FEES:** \$106,658.00 is due on day of sale. \$9.00 per MBF is due upon removal. These are in addition to the bid price.

**SPECIAL REMARKS:** This sale contains high quality Douglas-fir.

Any timber harvest within two tree lengths of the Williams NW Pipeline right-of-way will require at least one week advance notice to the Williams Northwest Pipeline.

Decking timber or parking of equipment is not permitted on gas pipeline right-of-ways. No timber is to be felled into or yarded through the gas pipeline right-of-way. No equipment is to cross the gas pipelines.

There are multiple recreation trails located in Units #2, #4, #5 and #6. These are to be restored to original pre-harvest condition following harvest per Schedule A-Recreation Trail Clean Out and Repair.

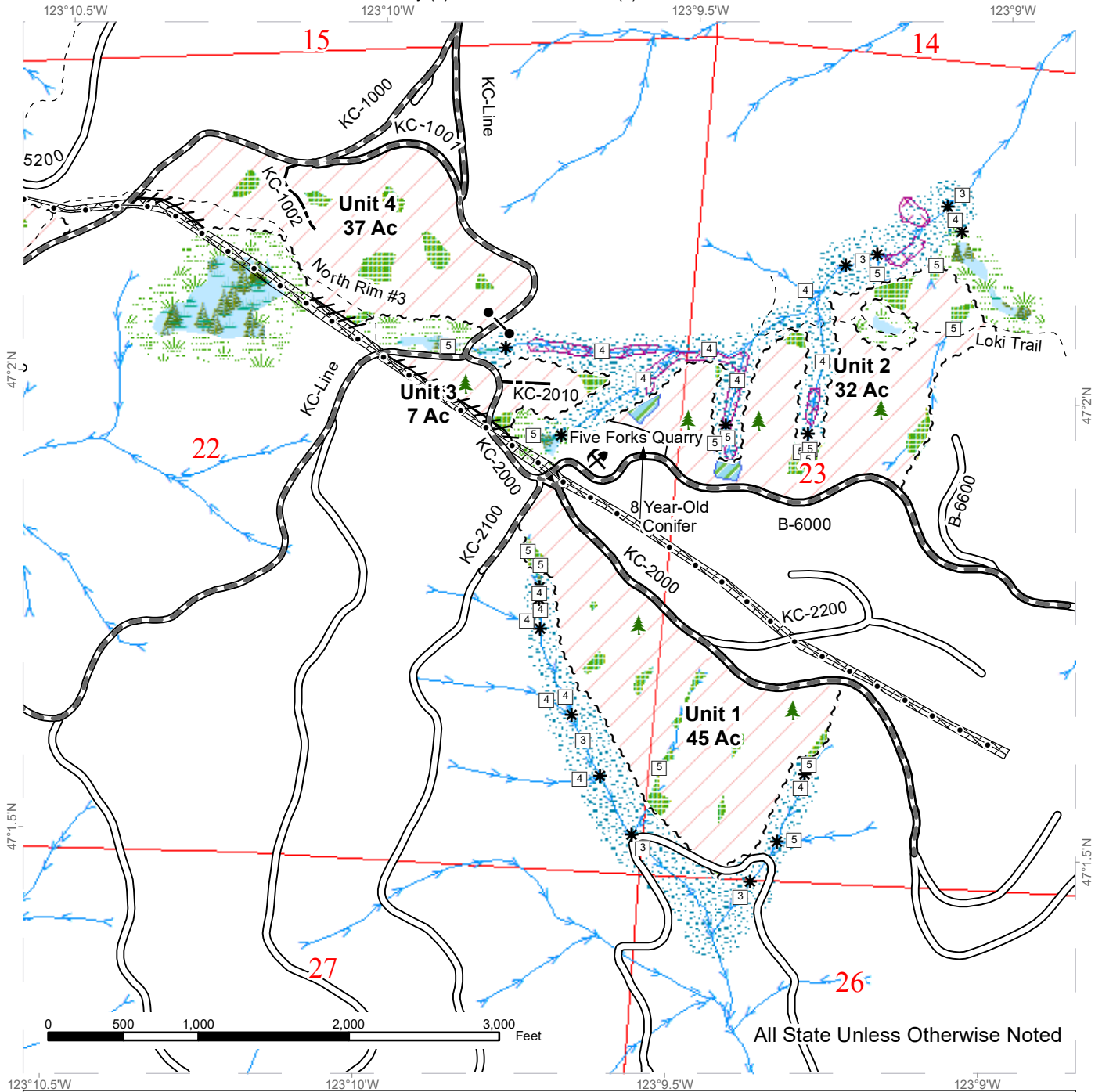
Purchaser shall cut all hardwood stems 2 inches DBH or greater, or 6 feet tall or greater, within the harvest units, leaving a stump no more than 12 inches in height.



# TIMBER SALE MAP

**SALE NAME:** BIG RED  
**AGREEMENT #:** 30-099057  
**TOWNSHIP(S):** T18R4W  
**TRUST(S):** Common School and Indemnity (3), State Forest Transfer (1)

**REGION:** South Puget Sound Region  
**COUNTY(S):** Thurston  
**ELEVATION RGE:** 920-1800



All State Unless Otherwise Noted

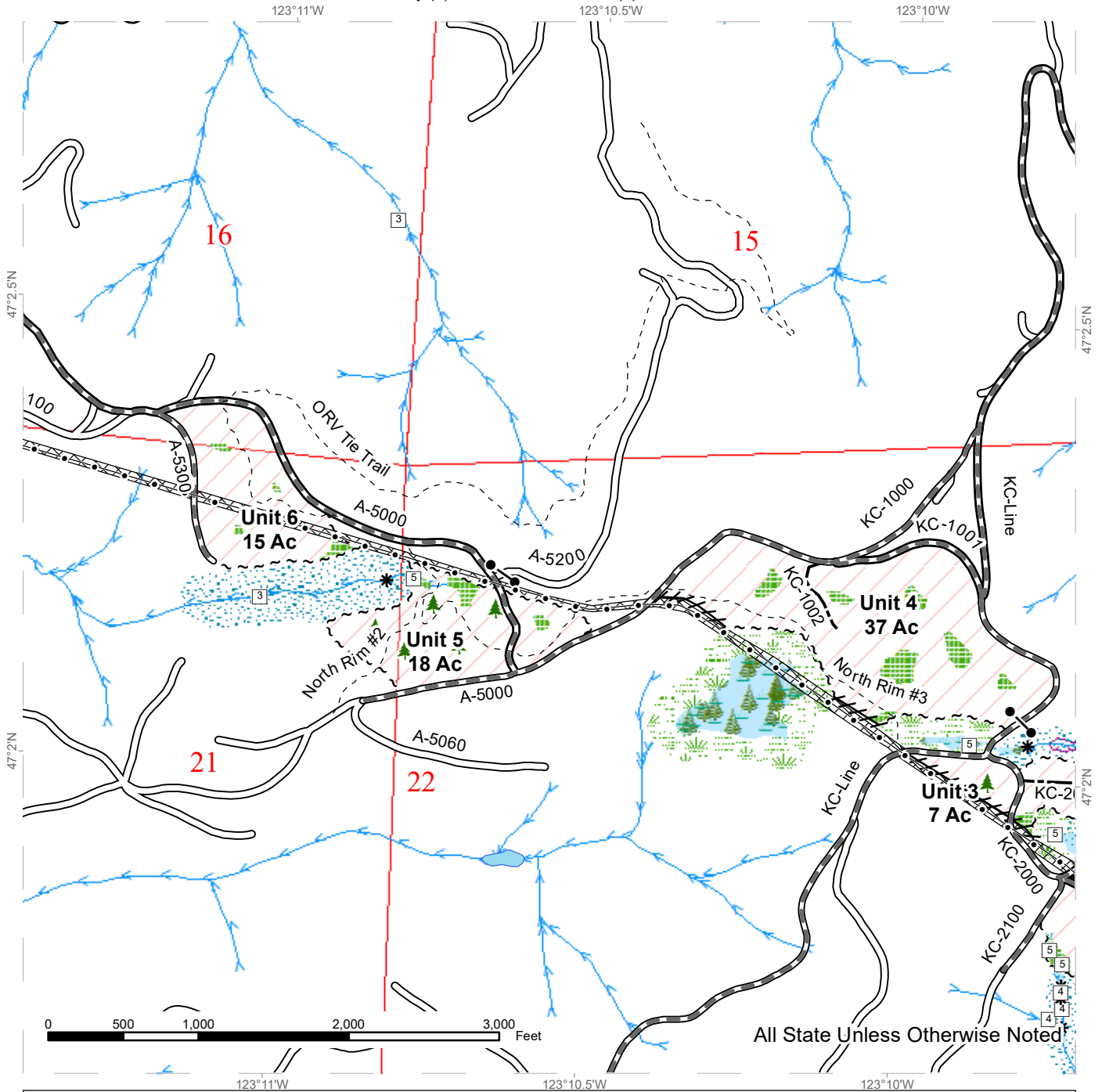
Variable Retention Harvest	Sale Boundary Tags	Streams
Leave Tree Area	Flag Line	Stream Type
Riparian Mgt Zone	Timber Type Change	Stream Type Break
Forested Wetland	Existing Roads	Recreation Trails
Wetland Mgt Zone	Required Pre-Haul Maintenance	Pipeline
Non-Tradeable Leave Tree Area	Optional Construction	Underground Utility ROW
Tailhold Restriction Area	Gate (Master-957)	
Leave Tree Area <1/4-acre	Rock Pit	



# TIMBER SALE MAP

**SALE NAME:** BIG RED  
**AGREEMENT #:** 30-099057  
**TOWNSHIP(S):** T18R4W  
**TRUST(S):** Common School and Indemnity (3), State Forest Transfer (1)

**REGION:** South Puget Sound Region  
**COUNTY(S):** Thurston  
**ELEVATION RGE:** 920-1800



All State Unless Otherwise Noted

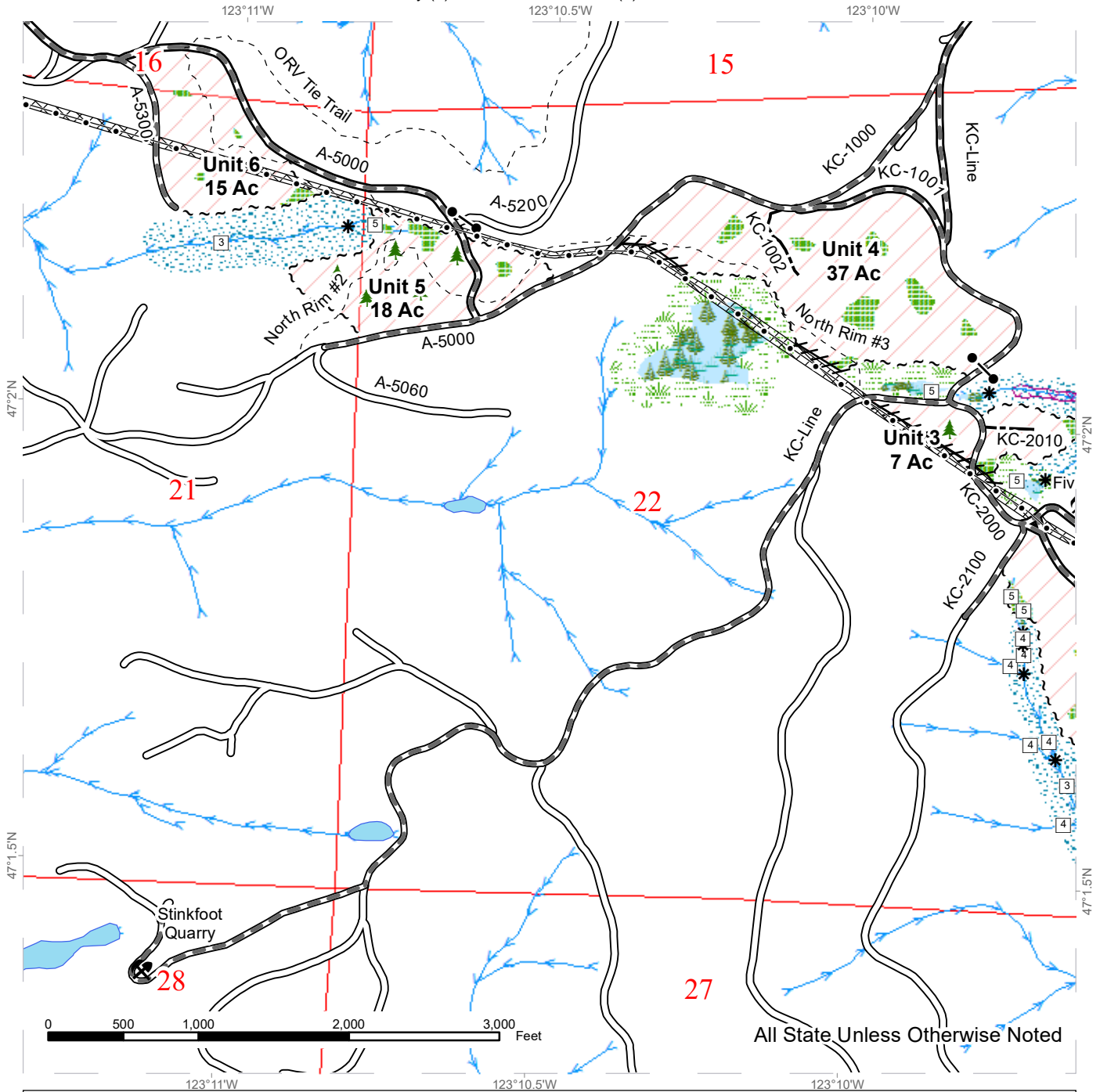
Variable Retention Harvest	Sale Boundary Tags	Streams
Leave Tree Area	Flag Line	Stream Type
Riparian Mgt Zone	Existing Roads	Stream Type Break
Forested Wetland	Required Pre-Haul Maintenance	Recreation Trails
Wetland Mgt Zone	Optional Construction	Pipeline
Tailhold Restriction Area	Gate (Master-957)	Underground Utility ROW
	Leave Tree Area <1/4-acre	



# TIMBER SALE MAP

**SALE NAME:** BIG RED  
**AGREEMENT #:** 30-099057  
**TOWNSHIP(S):** T18R4W  
**TRUST(S):** Common School and Indemnity (3), State Forest Transfer (1)

**REGION:** South Puget Sound Region  
**COUNTY(S):** Thurston  
**ELEVATION RGE:** 920-1800



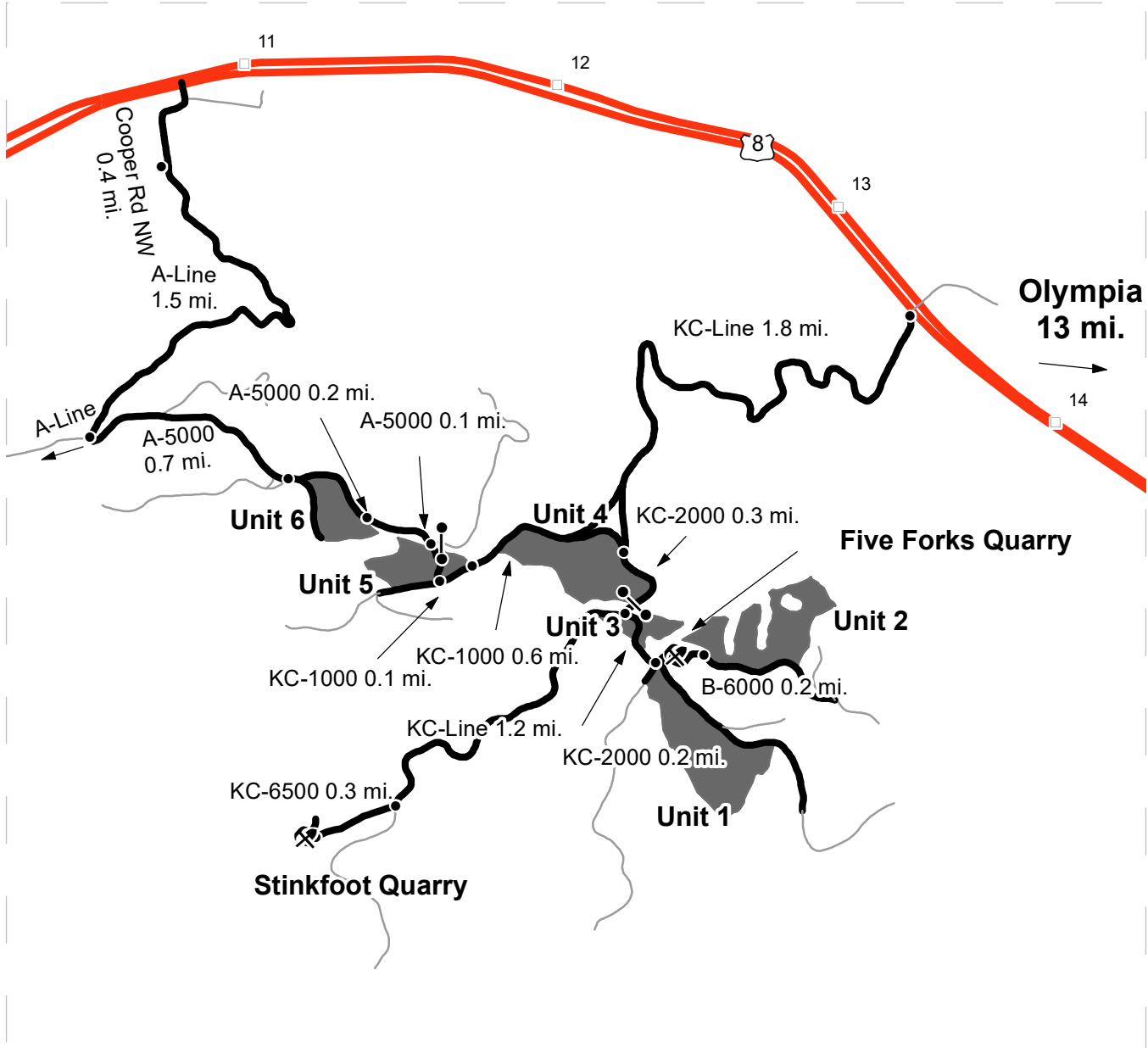
All State Unless Otherwise Noted

	Variable Retention Harvest		Sale Boundary Tags		Streams
	Leave Tree Area		Flag Line		Stream Type
	Riparian Mgt Zone		Existing Roads		Stream Type Break
	Forested Wetland		Required Pre-Haul Maintenance		Recreation Trails
	Wetland Mgt Zone		Optional Construction		Pipeline
	Tailhold Restriction Area		Gate (Master-957)		Underground Utility ROW
			Leave Tree Area <1/4-acre		
			Rock Pit		

# DRIVING MAP

**SALE NAME:** BIG RED  
**AGREEMENT#:** 30-099057  
**TOWNSHIP(S):** T18R4W  
**TRUST(S):** Common School and Indemnity (3), State Forest Transfer (1)

**REGION:** South Puget Sound Region  
**COUNTY(S):** Thurston  
**ELEVATION RGE:** 920-1800



Map may not be to scale

	Timber Sale Unit
	Haul Route
	Other Road
	Milepost Markers
	Distance Indicator
	Gate (Master-957)
	Rock Pit

**DRIVING DIRECTIONS:**

From US Highway 8 (west of milepost 14) turn south onto the KC-Line and follow 1.8 miles to Unit 4. Unit 5: turn west onto KC-1000, follow for 0.6 miles to Unit 5. Unit 6: continue another 0.1 miles and turn north onto the A-5000. Follow for 0.3 miles to Unit 6.

Unit 3: From the KC-Line, KC-1000 junction follow the KC-2000 0.3 miles to Unit 3. Unit 1: continue another 0.2 miles to Unit 1. Unit 2/Five Forks Quarry: turn east onto the B-6000 and follow for 0.2 miles to the Quarry and Unit.

Stinkfoot Quarry: from the KC-Line, KC-2000 junction follow the KC-Line 1.2 miles and turn west onto the KC-6500. Follow for 0.3 miles to Stinkfoot Quarry.





TIMBER NOTICE OF SALE

SALE NAME: Q GRANDVIEW

AGREEMENT NO: 30-98554

AUCTION: August 25, 2020 starting at 10:00 a.m., Northeast Region Office, Colville, WA

COUNTY: Okanogan

SALE LOCATION: Sale located approximately 9 miles north of Loomis, WA

PRODUCTS SOLD AND SALE AREA:

All green conifer species (excluding ponderosa pine) 7 inches and greater in diameter at breast height not banded with blue paint in Units 1, 2, 3, 4, 5, 6 and 7 bounded by white management unit boundary tags; and all right of way timber banded with orange paint

All forest products above located on part(s) of Sections 3, 10 and 11 all in Township 39 North, Range 25 East, W.M., containing 227 acres, more or less.

CERTIFICATION: This sale is certified under the Sustainable Forestry Initiative® program Standard (cert no: PwC-SFIFM-513)

ESTIMATED SALE VOLUMES AND QUALITY:

Table with columns: Species, Avg Ring DBH, Total MBF, MBF by Grade (P, SM, 1S, 2S, 3S, 4S, 5S, 6S, UT). Rows include Douglas fir and Sale Total.

MINIMUM BID: \$114,000.00

BID METHOD: Sealed Bids

PERFORMANCE SECURITY:

\$22,800.00

SALE TYPE: Lump Sum

EXPIRATION DATE: November 11, 2022

ALLOCATION: Export Restricted

BID DEPOSIT: \$11,400.00 or Bid Bond. Said deposit shall constitute an opening bid at the appraised price.

HARVEST METHOD: Ground based equipment, Track skidder, and Rubber tired skidder. Falling and Yarding will not be permitted from March 15 to June 1 unless authorized in writing by the Contract Administrator due to spring breakup.

ROADS: 249.01 stations of required construction. 4.55 stations of required reconstruction. 77.99 stations of required prehaul maintenance. Road construction will not be permitted from March 15 to June 1 unless authorized in writing by the Contract Administrator due to spring breakup and on the E392504G road from station 0+00 to 20+00 from January 1 to September 1 due to wildlife timing restrictions. The hauling of forest products will not be permitted from March 15 to June 1 unless authorized in writing by the Contract Administrator due to spring breakup.

ACREAGE DETERMINATION

CRUISE METHOD: Acreage determined using GPS methods. Acreage shown above is net harvest acres in harvest units. All species: 7.0 - 17.5 inches dbh has minimum top of 4.6 inch dib. All species 17.6 inches and greater dbh have a minimum top dib of 40% of dob at 16 feet or a 6 inch top whichever is greater. Utility wood: comprised of non-board foot volume and



## TIMBER NOTICE OF SALE

---

volume below the minimum top diameter of 5.0 inches or 40% of dob at 16 feet to a minimum of a 2.6 inch top.

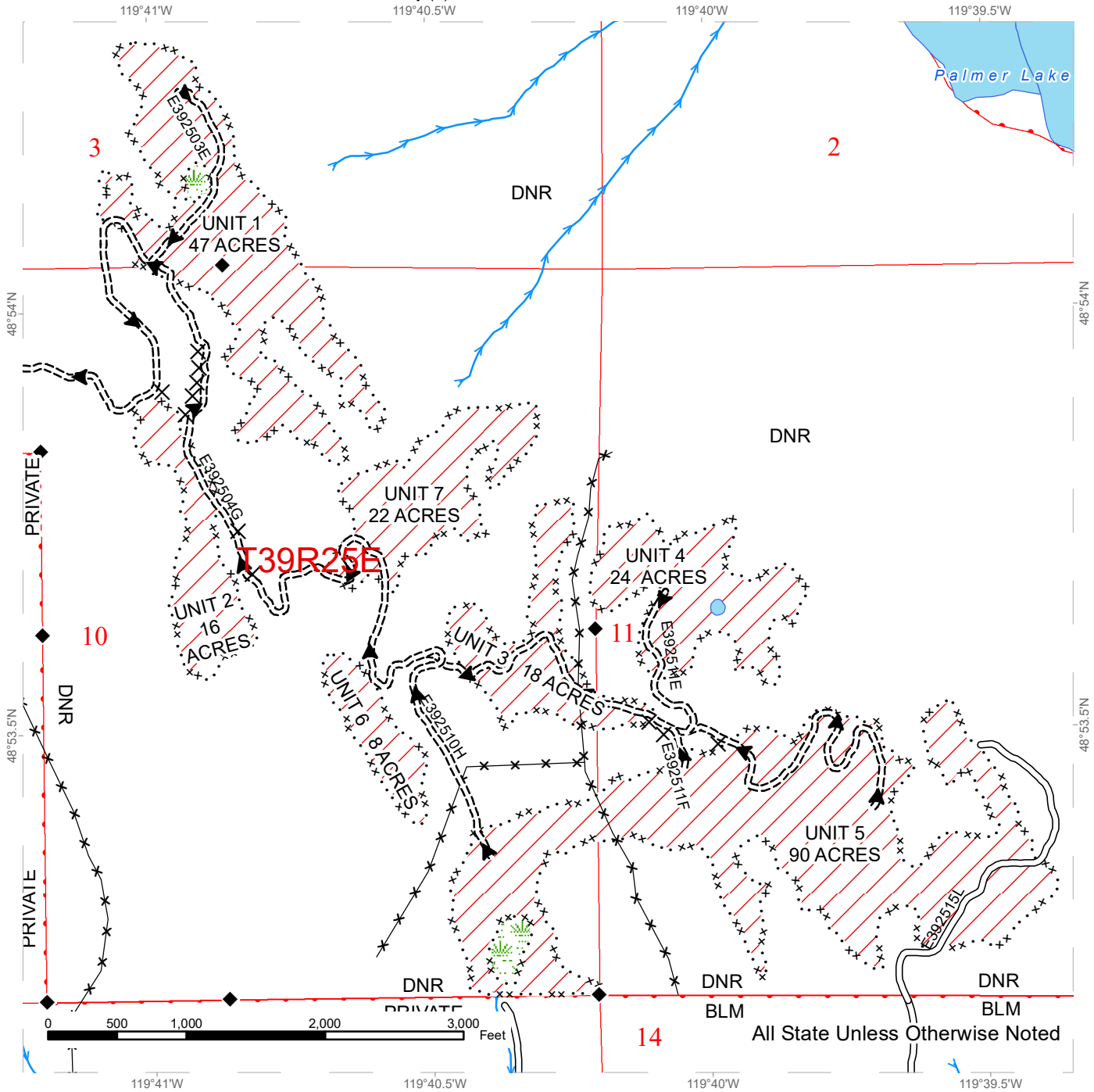
**FEES:** Within 10 days of day of sale, Purchaser shall provide payment for a road use permit in the amount of \$800.00. \$36,822.00 is due on day of sale. \$9.00 per MBF is due upon removal. These are in addition to the bid price.

**SPECIAL REMARKS:** The road plan requires installation of a State owned bridge. See road plan for details. There is limited access to the sale area. Contact the Northeast Region Office at (509) 684-7474 for access.

# TIMBER SALE MAP

**SALE NAME:** Q GRANDVIEW  
**AGREEMENT #:** 30-098554  
**TOWNSHIP(S):** T39R25E  
**TRUST(S):** Common School and Indemnity (3)

**REGION:** Northeast Region  
**COUNTY(S):** Okanogan  
**ELEVATION RGE:** 3040-3920



	Variable Retention Harvest		Streams
	Wetland Mgt Zone		Survey Monument
	Management Unit Boundary tags		(Banded) ROW trees = 2 acres
	Existing Roads		Fence
	Required Construction		
	Haul_Route		

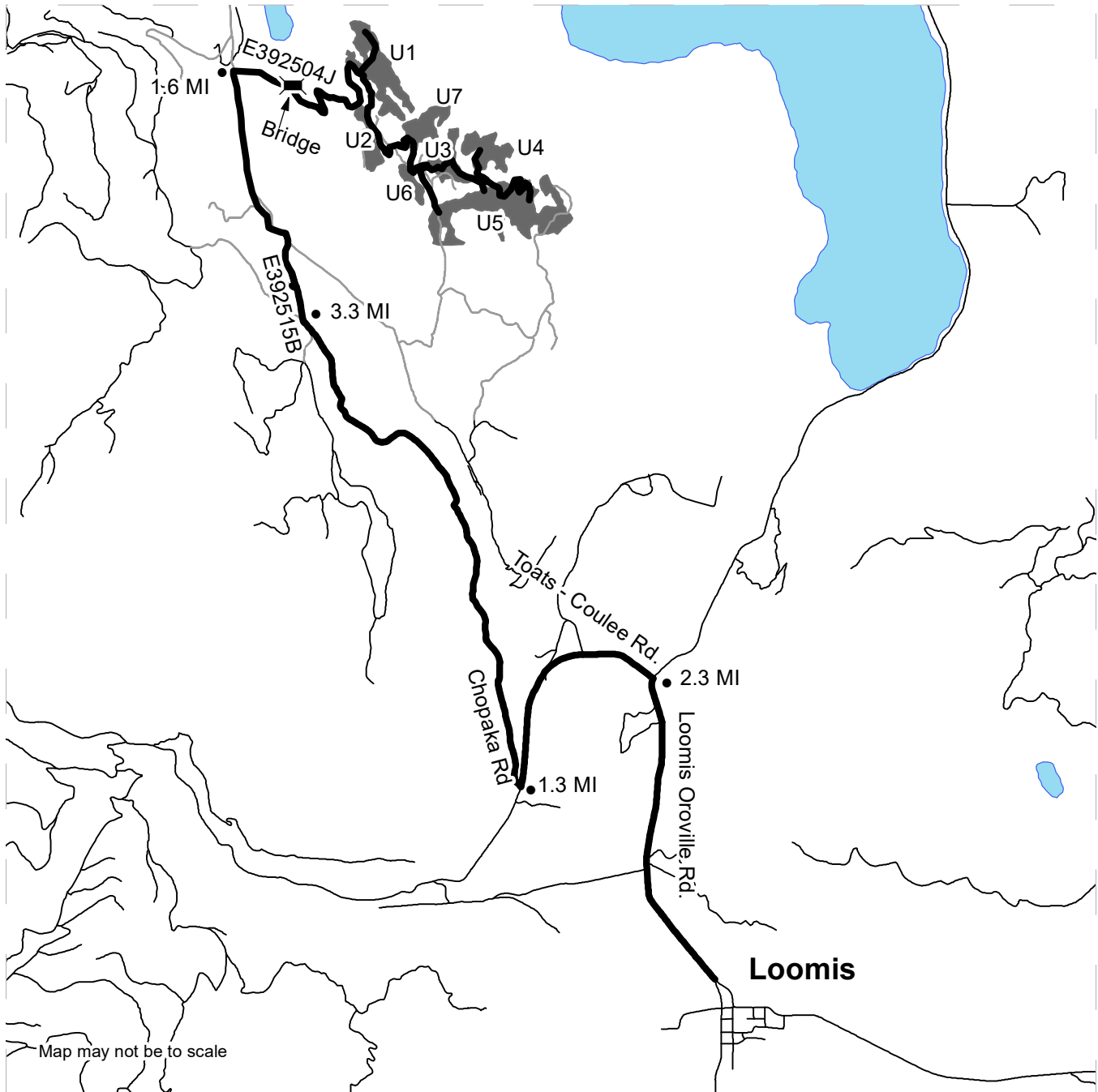







# DRIVING MAP

**SALE NAME:** Q GRANDVIEW  
**AGREEMENT#:** 30-098554  
**TOWNSHIP(S):** T39R25E  
**TRUST(S):** Common School and Indemnity (3)

**REGION:** Northeast Region  
**COUNTY(S):** Okanogan  
**ELEVATION RGE:** 3040-3920



Map may not be to scale

	Timber Sale Unit
	Haul Route
	Other Road

**DRIVING DIRECTIONS:**

Access Units 1, 2, 3, 4, 5, 6, and 7 from Loomis, WA.  
 From Loomis, travel north on the Loomis-Oroville Hwy for 2.3 miles, turn left onto Toats Coulee road and travel west for 1.3 miles to Chopaka road. Travel north on Chopaka road for 3.3 miles and turn right onto E392515B road. Travel north on E392515B road for 1.6 miles and turn right on E392504J road. Travel west to the bridge and E392504J turns into E392504E road. All units will be accessed from this road.





**State of Washington  
Department of Natural Resources**

**SEALED BID FORM**

Sale Name \_\_\_\_\_ Agreement Number \_\_\_\_\_

\_\_\_\_\_ hereby submits the following bid for timber.  
(Print full, legal company name)

\_\_\_\_\_  
(Street address, City, State, Zip Code)

\_\_\_\_\_  
(Phone Number)

---

---

**Lump Sum Bid** (Not Including Fees)      \$ \_\_\_\_\_ **For Total Sale**

**Weight Scale Sale Bid** (Not Including Fees)      \$ \_\_\_\_\_ / **Ton**

**Scribner Scale Sale Bid** (Not Including Fees)      \$ \_\_\_\_\_ / **MBF For Biddable Species**

---

---

**BID DEPOSIT**

**Bid Deposit Amount:** \$ \_\_\_\_\_

**Bid Deposit Type:**

- Cash, certified check, cashiers check, or money order  
 Per Sale Bid Bond  
 Statewide Bid Bond, Number \_\_\_\_\_

---

---

**Within 30 days of confirmation date** the successful bidder agrees to furnish Performance Security acceptable to the State in the amount specified on the Notice of Sale. Performance Security must guarantee performance of all provisions of the contract and payment of any damages caused by operations under the contract or resulting from the successful bidders noncompliance with any rule or law.

Bidder's Warranty and Bid Signature

*By signing and submitting this bid as an offer to purchase forest products from the State, the Bidder hereby warrants to the State that they have had an opportunity to fully inspect the sale area and the forest products being sold. Bidder further warrants to the State that they enter this bid based upon their own judgments of the value of the forest products, formed after their own examination and inspection of both the timber sale area and the forest products being sold. Bidder also warrants to the State that they enter this bid without any reliance upon the volume estimates, acreage, appraisals, pre-bid documentation, or any other representation by the Washington State Department of Natural Resources.*

\_\_\_\_\_ Date \_\_\_\_\_  
(Signature of Authorized Representative submitting this bid)

\_\_\_\_\_  
(Print name and title of Authorized Representative submitting this bid)

**Note: all sales are subject to confirmation by the Commissioner of Public Lands (Refer 79.15.120)**

## Instructions For Completing Sealed Bid Form

---

*All bids submitted for the purchase of forest products being sold by the Washington State Department of Natural Resources must have an original signature on behalf of the person or entity submitting the bid, and must be on the form provided in this booklet or a photocopy thereof. The DNR will not accept bids that are not signed, and will not accept bids that are not on the current, approved bid form. All appropriate blanks on bid form must be completed including the bid bond number if the bidder is relying upon a bid bond for bid deposit.*

*For more specific information, contact the appropriate region office.*

---

### In-Person Bids

- A. Sealed bids must be in auction box before 10:00 a.m. on the day of auction at the location specified in the Timber Notice of Sale.
  - B. Sealed bids must be submitted in an envelope with the name of the sale, the bidder's name and the contract number clearly written on the outside of the envelope. The full legal name and business address of the bidder must be inserted where indicated on the form, and must be on the bid bond and timber sale contract. The bid form must be signed by an authorized representative. When a bidder has more than one person authorized to bid, documentation of those persons with signature authority for bidding must accompany the bid or be on file at the region office. Sealed bid envelopes are available at all region offices. One bid per envelope.
  - C. Sealed bid envelopes **must** contain a completed bid form and a bid deposit.
  - D. Sealed bid envelopes **may** contain a check for the Initial Deposit amount and a check for fees.
- 

### Mailed Bids

- A. Bids that are mailed are required to have printed on the outside: "DO NOT OPEN UNTIL SALE DATE. SEALED BID ENCLOSED". The sealed bid envelope(s) will be enclosed inside the mailed-in envelope. Mailed bids must be submitted in an envelope with the name of the sale, the bidder's name and the agreement number clearly written on the outside of the envelope. The full legal name and business address of the bidder must be inserted where indicated on the form, and must be the same on the bid bond and timber sale contract. The Sealed Bid Form must be signed by an authorized representative. When a bidder has more than one person authorized to bid, documentation of those persons with signature authority for bidding must accompany the bid or be on file at the region office. Mail-in envelopes are available at all region offices. One bid per mailed-in envelope.
  - B. Bids that are mailed will be accepted up to 4:30 p.m. the last business day before the auction by the region office in which the sale is located. Bidders assume the risk for the method of delivery. The DNR assumes no responsibility for any delays caused by any delivery service.
  - C. Sealed bid envelopes **must** contain a completed bid form and a bid deposit.
  - D. Sealed bid envelopes **may** contain a check for the Initial Deposit amount and a check for fees.
- 

### Initial Deposit:

**Lump Sum Sales** - Initial Deposit must equal 10% of the total bid submitted.  
(25% if the bidder is a defaulter as defined under WAC 332-140-300)

**Weight Scale Sales** - Initial Deposit must equal 10% of the bid per ton multiplied by the total sale estimated tonnage. (25% if the bidder is a defaulter as defined under WAC 332-140-300)

**Scribner MBF Scale Sales** - Initial Deposit must equal 10% of the bid per MBF multiplied by the total sale MBF. (25% if the bidder is a defaulter as defined under WAC 332-140-300)

**State of Washington  
Department of Natural resources**

**STATEWIDE BID BOND**

Bond Number \_\_\_\_\_

\_\_\_\_\_ of \_\_\_\_\_,  
(Principal's Name) (City, State)

hereinafter called PRINCIPAL, and \_\_\_\_\_ hereinafter called  
SURETY,

a corporation organized under the laws of the State of \_\_\_\_\_, and authorized to transact surety business in the State of Washington, as SURETY, are held and firmly bound jointly and severally to the State of Washington, Department of Natural Resources, hereinafter called the STATE, in the sum of \$150,000.00 Dollars, lawful money of the United States of America. The PRINCIPAL binds itself, its heirs, executors, administrators, successors, and assigns, and the SURETY binds itself, its successors, and assigns, all jointly and severally.

This bond shall be governed by the laws of the State of Washington. In the event of a lawsuit involving this bond, a venue shall be proper only in Thurston County Superior Court.

Signed, sealed and dated this \_\_\_\_\_ day of \_\_\_\_\_, \_\_\_\_\_ .  
(month) (year)

This statewide bid bond may be used for bidding between the following dates:

Starting:

Ending:

**It Is Hereby Understood and Agreed:**

If PRINCIPAL is an apparent high bidder, PRINCIPAL shall before 4:30 p.m ., on day of sale, pay to the STATE the amount of the initial deposit in the form of a certified check, cashier's check, bank draft, cash or money order, then this agreement shall be void for the sale on which the payment is made; otherwise, it will remain in force.

SURETY will make payment to the STATE within ten days after demand by the STATE if the PRINCIPAL shall fail to make timely payment as described above.

The SURETY may cancel this bond by sending a written notice to the STATE, not less than forty-five days before a cancellation date; liability shall terminate as to acts or omissions of the PRINCIPAL that occur after the cancellation date.

The PRINCIPAL and the SURETY executed this bond on the date first mentioned.

**Principal:** (Above named)

Signature: \_\_\_\_\_

Name: \_\_\_\_\_

Title: \_\_\_\_\_

Address: \_\_\_\_\_

City: \_\_\_\_\_  
State & Zip Code

**Surety:** (Above named)

Signature: \_\_\_\_\_

Name: \_\_\_\_\_

Title: \_\_\_\_\_

Address: \_\_\_\_\_

City: \_\_\_\_\_  
State & Zip Code

**Surety:** (Local Office of Authorized agent)

Signature: \_\_\_\_\_

Name: \_\_\_\_\_

Title: \_\_\_\_\_

Address: \_\_\_\_\_

City: \_\_\_\_\_  
State & Zip Code

Notary or Company Seal in Space Above

## **Instructions for Completing Timber Sale Statewide Bid Bond**

- A. This form is authorized for use as bid guaranty to qualify for bidding on Washington State Department of Natural Resources timber sales.
- B. The Statewide Bid Bond may be used as bid guaranty on more than one timber sale.
- C. The full legal name and business address of the PRINCIPAL must be inserted where indicated and must be the same as will appear on the bidding record and timber sale contract. The bond must be signed by an authorized person. Additionally, the name must be typed or printed below the signature and title must be shown.
- D. The full legal name and business address of the SURETY must be inserted where indicated. The bond must be signed by an authorized person. Additionally, the name must be typed or printed below the signature and the title must be shown.
- E. If the SURETY does not have a Washington State office or resident agent, but is authorized to transact surety business in the State of Washington as SURETY, it may leave this signature block blank.
- F. This form must be received by the Department of Natural Resources, Product Sales & Leasing Division, PO BOX 47016, Olympia, Washington, 98504-7016, ten days in advance of the auction.
- G. **The State reserves the right to reject *incomplete or incorrect* bid bond forms, making such forms unacceptable as bid guaranty.**



**State of Washington  
Department of Natural Resources**

**Timber Sale Per Sale Bid Bond**

Bond Number \_\_\_\_\_

\_\_\_\_\_ of \_\_\_\_\_, hereinafter called PRINCIPAL, and \_\_\_\_\_, hereinafter called SURETY, a corporation organized under the laws of the State of \_\_\_\_\_ and authorized to transact surety business in the State of Washington, as SURETY, are held and firmly bound jointly and severally to the State of Washington, Department of Natural Resources, hereinafter called the STATE, in the sum of \$ \_\_\_\_\_ Dollars, lawful money of the United States of America. The PRINCIPAL binds itself, its heirs, executors, administrators, successors, and assigns, and the SURETY binds itself, its successors, and assigns, all jointly and severally.

This bond shall be governed by the laws of the State of Washington. In the event of a lawsuit involving this bond, venue shall be proper only in Thurston County Superior Court.

Signed, sealed, and dated this \_\_\_\_\_ day of \_\_\_\_\_, 20 \_\_\_\_\_.

**BID IDENTIFICATION:**

SALES NAME(S)	REQUIRED DEPOSIT	AGREEMENT NUMBER(S)

**DATE OF BID:** \_\_\_\_\_

**It Is Hereby Understood and Agreed:**

*If* PRINCIPAL is the high bidder on the sale(s) identified above and, within ten (10) days of the day of sale, transmits cash, certified check, cashier's check, bank draft or money order, payable to the STATE, in the amount of the bid guaranty required by the terms of the Notice of Sale, *then* this obligation shall be void; *otherwise*, it shall remain in force.

SURETY will make payment to the STATE within ten (10) days after demand by the STATE whenever the PRINCIPAL shall fail to make timely payment as described above.

IN WITNESS WHEREOF: the PRINCIPAL and the SURETY have caused this bond to be executed on the date first mentioned.

**SECOND OFFICER:**

Signature: \_\_\_\_\_

Name: \_\_\_\_\_

Title: \_\_\_\_\_

**PRINCIPAL:** (Above Named)

Signature: \_\_\_\_\_

Name: \_\_\_\_\_

Title: \_\_\_\_\_

**SURETY:** (Local Office of Authorized Agent)

Signature: \_\_\_\_\_

Name: \_\_\_\_\_

Title: \_\_\_\_\_

Address: \_\_\_\_\_

City: \_\_\_\_\_

State & Zip: \_\_\_\_\_

**SURETY:** (Above Named)

Signature: \_\_\_\_\_

Name: \_\_\_\_\_

Title: \_\_\_\_\_

Address: \_\_\_\_\_

City: \_\_\_\_\_

State & Zip \_\_\_\_\_

**NOTARY OR COMPANY SEAL IN THE SPACE ABOVE**



## **Instructions for Completing Timber Sale Per Sale(s) Bid Bond**

- A. This form is authorized for use as bid guaranty to qualify for bidding on Washington State Department of Natural Resources timber sales.
- B. The Timber Sale Per Sale Bid Bond may be used as bid guaranty on more than one timber sale auction held the same date at the same location.
- C. The full legal name and business address of the PRINCIPAL must be the same as will appear on the bidding record and timber sale contract. The bond must be signed by an authorized person, the name typed or printed, and title shown. If PRINCIPAL is a corporation, a second officer must sign in the space to the left of the signature of the officer executing for the PRINCIPAL.
- D. The full legal name and business address of the SURETY must be inserted where indicated. The bond must be signed by an authorized person. Additionally, the name must be typed or printed below the signature and the title must be shown. If this person is not an officer of the corporation, evidence of authority must be submitted.
- E. If the SURETY does not have a Washington State office or resident agent, but is authorized to transact surety business in the State of Washington as Surety, it may leave the local office signature block blank.
- F. The date of the bid bond must not be later than the auction date.
- G. **The State reserves the right to reject incomplete or *incorrect* bid bond forms, making such forms unacceptable as guaranty.**



STATE OF WASHINGTON  
DEPARTMENT OF NATURAL RESOURCES

**LOG SORT SEALED BID FORM**

Sale Name \_\_\_\_\_ Agreement Number \_\_\_\_\_ Date \_\_\_\_\_

\_\_\_\_\_ hereby submits the following bid for delivered logs.  
(Print Company Name)

\_\_\_\_\_ Telephone Number \_\_\_\_\_  
(Print Name Authorized Company Representative) (Contact for bid result notification)

\_\_\_\_\_  
(Street Address)

\_\_\_\_\_  
(City, State and Zip)

Agreement Number	Sort Number	<u>Delivered Logs Bid Amount</u> (fill in one only)	
		\$ /MBF	\$ /TON

**Bid Deposit Amount** \$ \_\_\_\_\_

- Bid Deposit Type:**
- Cash, Certified Check, Cashiers Check, or Money Order
  - Per Sale Bid Bond
  - Statewide Bid Bond, Number \_\_\_\_\_

The successful bidder agrees to furnish payment security acceptable to the State in the amount as described in clause P-041 of the Purchaser’s contract prior to log delivery and at a date to be determined by the State.

**Bidder’s Warranty and Bid Signature**

*By signing and submitting this bid as offer to purchase forest products from the State, the Bidder hereby warrants to the State that they have had an opportunity to fully inspect the sale area and the forest products being sold. Bidder further warrants to the State that they enter this bid based solely upon their own judgment of the value of the forest products, formed after their own examination and inspection of both the timber sale area and the forest products being sold. Bidder also warrants to the State that they enter this bid without any reliance upon the volume estimates, acreage estimates, appraisals, pre-bid documentation, or any other representation by the State Department of Natural Resources.*

\_\_\_\_\_  
(Signature of Authorized Representative submitting this bid)

\_\_\_\_\_  
(Date of Signature)

\_\_\_\_\_  
(Print name and title of Authorized Representative submitting this bid)

**NOTES:** A separate bid form is required for each log sort bid and must be delivered in a separate envelope. Photocopies of this bid form may be used. Each photocopy must have original signatures. Final contract award is contingent upon the State’s haul cost analysis. Actual haul route may vary and is subject to change at the State’s discretion. All sales are subject to confirmation by the Commissioner of Public Lands as per RCW 79.15.100.

## LOG SORT SEALED BID SUPPLEMENTAL INFORMATION FORM

\_\_\_\_\_  
(Print Company Name)

\_\_\_\_\_  
(Sale Name)

\_\_\_\_\_  
(Agreement Number)

\_\_\_\_\_  
(Sort Number)

\_\_\_\_\_  
(email: optional for DNR production report distribution)

### **Log Manufacturing Specifications:**

**Sawlog and Peeler sorts:** Enter at least one preferred log length including trim for each log length range below.

**Pole sorts (Distribution):** Enter three or more lengths. Attach preferred manufacturing information.

**Pole sorts (Transmission):** Enter six or more lengths. Attach preferred manufacturing information.

**Tonnage sorts:** See bid form instructions for required log lengths. Enter additional custom lengths as desired.

Log Length Ranges	Bidder's Preferred Log Lengths
16 ft. through 20 ft.	
22 ft. through 30 ft.	
32 ft. through 40 ft.	
Distribution Poles – 35 ft. through 55 ft.	
Transmission Poles – 60 ft.+	

### **Log Delivery Information:**

#### 1) Designate the point of delivery and address (must be a street address)

\_\_\_\_\_  
(Location Name)

\_\_\_\_\_  
(Street Address)

\_\_\_\_\_  
(City, State and Zip)

#### 2) Designate the state approved Scaling and Weighing facilities closest to the point of delivery as needed.

##### **Scaling Location Information**

\_\_\_\_\_  
(Scaling Location Name)

\_\_\_\_\_  
(Third Party Scaling Organization)

\_\_\_\_\_  
(Scaling Location Street Address)

\_\_\_\_\_  
(Scaling Location City, State and Zip)

##### **Weighing Location Information**

\_\_\_\_\_  
(Weighing Location Name)

\_\_\_\_\_  
(Weighing Location Owner)

\_\_\_\_\_  
(Weighing Location Street Address)

\_\_\_\_\_  
(Weighing Location City, State and Zip)

**Final contract award is contingent upon the State's haul cost analysis. Actual haul route may vary and is subject to change at the State's discretion. Additional terms or conditions requested by the bidder on or attached to the Log Sort Sealed Bid or Supplemental Information Forms are informational only and non-binding.**

## **Instructions for Completing the Log Sort Sealed Bid and Supplemental Information Forms.**

All bids submitted for the purchase of forest products being sold by the Washington State Department of Natural Resources must have an original signature on behalf of the person or entity submitting the bid, and must be on the form(s) provided in this booklet or a photocopy thereof. The DNR will not accept bids that are not signed, and will not accept bids that are not on the current, approved bid form. All appropriate blanks including Agreement Number, Sort Number, Bid amount (per mbf or ton as appropriate for the sort), Bid deposit amount and type. Signatures and date on bid form must be completed including the bid bond number if bidder is relying upon a bid bond for bid deposit.

Bids shall not be accepted if a completed '**Log Sort Sealed Bid Supplemental Information Form**' is not included with the approved '**Log Sort Sealed Bid Form**'.

**Required log lengths for tonnage sorts:** Preferred log lengths for tonnage sawlog sorts shall include the following plus any additional lengths identified on the Bid Supplemental Information form:

<b>Species Type</b>	<b>Preferred Lengths</b>
Conifer Sorts	16', 20', 24', 26', 32', 40'
Hardwood Sorts	18', 20', 26', 28', 30', 36', 38', 40'

For more specific information, contact the appropriate region office.

### **In-Person Bids**

- A. Sealed bids must be in auction box or auction envelope before 10:00 a.m. on the day of sale at the location specified in the notice of sale.
- B. Sealed bids must be submitted in an envelope with the name of the sale, the bidder's name and the contract agreement number clearly written on the outside of the envelope. The full legal name and business address of the bidder must be inserted where indicated on the form, and must be the same as the name on the bid bond and timber sale contract. The bid form must be signed by an authorized person. When a bidder has more than one person authorized to bid, then documentation of those persons with signature authority for bidding must accompany the bid or be on file at the region office. Sealed bid envelopes are available at all region offices. One bid per envelope.
- C. Sealed bid envelopes must contain the following:
  1. A completed '**Log Sort Sealed Bid Form**';
  2. A completed '**Supplemental Information Form**' and;
  3. A bid deposit

### **Mailed Bids**

- A. Mail-in bid envelopes are required to have printed on the outside: "DO NOT OPEN UNTIL SALE DATE. SEALED BID ENCLOSED." The sealed bid envelope(s) will be enclosed inside the mailed-in envelope. Mailed bids must be submitted in an envelope with the name of the sale, the bidder's name and the agreement number clearly written on the outside of the envelope. The full legal name and business address of the bidder must be inserted where indicated on the form, and must be the same on the bid bond and timber sale contract. The bid form must be signed by an authorized person. When a bidder has more than one person authorized to bid, then documentation of those persons with signature authority for bidding must accompany the bid or be on file at the region office. Mail-in envelopes are available at all region offices. One bid per mailed-in envelope.
- B. Mail-in or otherwise delivered bids will be accepted up to 4:30 p.m. the last business day before the auction by the region office in which the sale is located. Bidders assume the risk for the method of delivery they chose. The DNR assumes no responsibility for any delays caused by any delivery service.
- C. Sealed bid envelopes must contain the following:
  1. A completed '**Log Sort Sealed Bid Form**';
  2. A completed '**Log Sort Sealed Bid Supplemental Information Form**' and;
  3. A bid deposit



# Department of Natural Resources Region Offices

**Olympia Headquarters**  
 1111 Washington St SE  
 MS 47000  
 Olympia, WA 98504-7000  
 (360) 902-1000  
[www.dnr.wa.gov](http://www.dnr.wa.gov)

**Product Sales & Leasing Division**

1111 Washington St SE  
 MS 47014  
 Olympia, WA 98504-7014  
 (360) 902-1600

**South Puget Sound Region**

950 Fairman Ave N  
 Enumclaw, WA 98022-9282  
 (360) 825-1631

**Pacific Cascade Region**

601 Bond Road  
 PO Box 280  
 Castle Rock, WA 98611-0280  
 (360) 577-2025

**Southeast Region**

713 Bowers Road  
 Ellensburg, WA 98926-9301  
 (509) 925-8510

**Northwest Region**

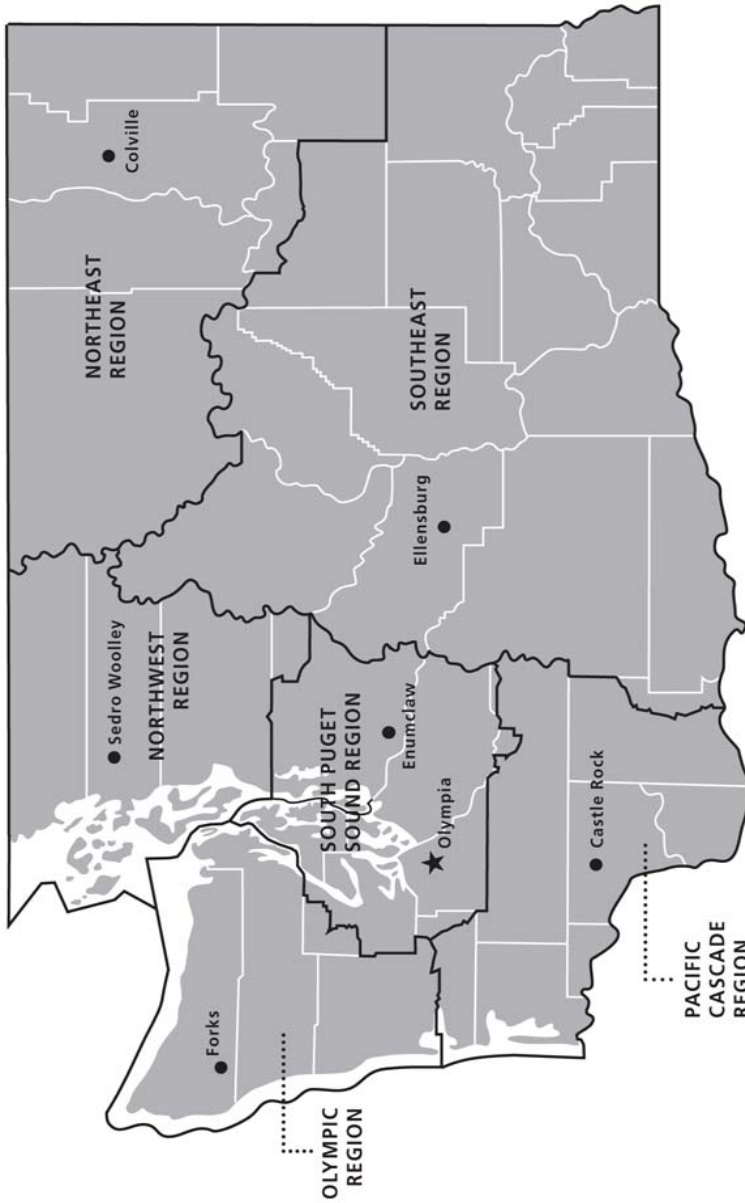
919 N Township St  
 Sedro Woolley,  
 WA 98284-9384  
 (360) 856-3500

**Olympic Region**





411 Tillicum Lane  
 Forks, WA 98331-9271  
 (360) 374-2800

**Northeast Region**

225 S Silke Road  
 PO Box 190  
 Colville, WA 99114-0190  
 (509) 684-7474



**DNR REGIONS**

-  DNR Region Boundaries
-  County Boundaries
-  DNR Region Office
-  Olympia Headquarters



WASHINGTON STATE DEPT OF  
**NATURAL RESOURCES**



For more information about how public lands are managed visit DNR's web page at [www.dnr.wa.gov](http://www.dnr.wa.gov)

Fire, Burn Ban Information and Region Offices  
 Toll Free: 1-800-527-3305 General TTY: 7-1-1





WASHINGTON STATE DEPT OF  
**NATURAL  
RESOURCES**

1111 WASHINGTON ST SE  
MS 47014  
OLYMPIA WA 98504-7014

[www.dnr.wa.gov](http://www.dnr.wa.gov)

For alternate formats  
of this document,  
Call (360) 902-1000  
TRS: 7-1-1

PRINTED IN THE USA ON RECYCLED PAPER

