



# Public Auction Sale of Timber

## August 2019

Book 1002



# IMPORTANT NOTICES

## *Natural Resources (DNR)*

### **Governmental Regulatory Actions or Orders**

The purchaser assumes the risk of liabilities related to regulatory actions or orders by any government agency that may affect the operability of these timber sales. Such regulatory actions or orders include, but are not limited to, actions taken pursuant to the State Forest Practices Act, Chapter 76.09 RCW, and the Federal Endangered Species Act, 16 U.S.C. §§ 1531-1544. Please see timber sale contract clauses G-066 and G-220 for further information.

### **Threatened and Endangered Species**

DNR cannot verify the presence or absence of any threatened or endangered species that may affect the operability of the timber sale. Purchasers must rely on their own assessments.

### **Export Restricted**

All timber purchased under these state DNR contracts shall not be exported outside of the United States until the timber has been processed. Purchasers shall not violate any of the prohibitions in WAC 240-15-015 (relating to the prohibitions on export and substitution), WAC 240-15-025 (relating to reporting requirements), and WAC 240-15-030 (relating to enforcement). If purchasers knowingly violate WAC 240-15-015, purchasers shall be barred from bidding on or purchasing export restricted timber as provided.

### **Cover photos**

Timber Sales in this book are from state trust lands, managed to help build K-12 public schools, state universities, colleges, prisons, mental hospitals, the state Capitol; and to support local services in many counties.

**Top right:** Landscape view of DNR-managed trust lands in western Washington. Photo courtesy of DNR staff.

**Second down right:** Timber harvest operations on DNR-managed trust land. Photo courtesy of DNR staff.

**Third down right:** Log truck loaded with timber harvested from DNR-managed trust land. Photo courtesy of DNR staff.

**Bottom right:** Marcus Whitman Elementary School in Richland Washington. Photo courtesy of Richland School District.

**Bottom middle:** Storytime at the Shelton Timberland Library. Photo courtesy of Timberland Regional Library.

**Bottom left:** Douglas-fir seedlings growing at the Webster Nursery. Many of these seedlings will be planted following timber harvest on DNR-managed trust lands. Photo courtesy of DNR staff.

## Table of Contents

Certification Opportunities for DNR Timber Purchasers	Page 3
Bidder/Purchaser Auction and Bidding Information	Page 5
Summary of All Sales Being Offered in August	Page 11
Taylor Fish	Page 13
Boulderdash	Page 19
Mozzarella VRH Thin	Page 25
Clear Choice	Page 31
Piling	Page 37
Cygnus	Page 43
Q Elk View Sorts	Page 47
Sealed Bid Form and Instructions	Page 53
Statewide Bid Bond and Instructions	Page 55
Timber Sale per Sale Bid Bond and Instructions	Page 59
Log Sort Sealed Bid Form and Instructions	Page 63





## **Certification Opportunities for DNR Timber Purchasers**

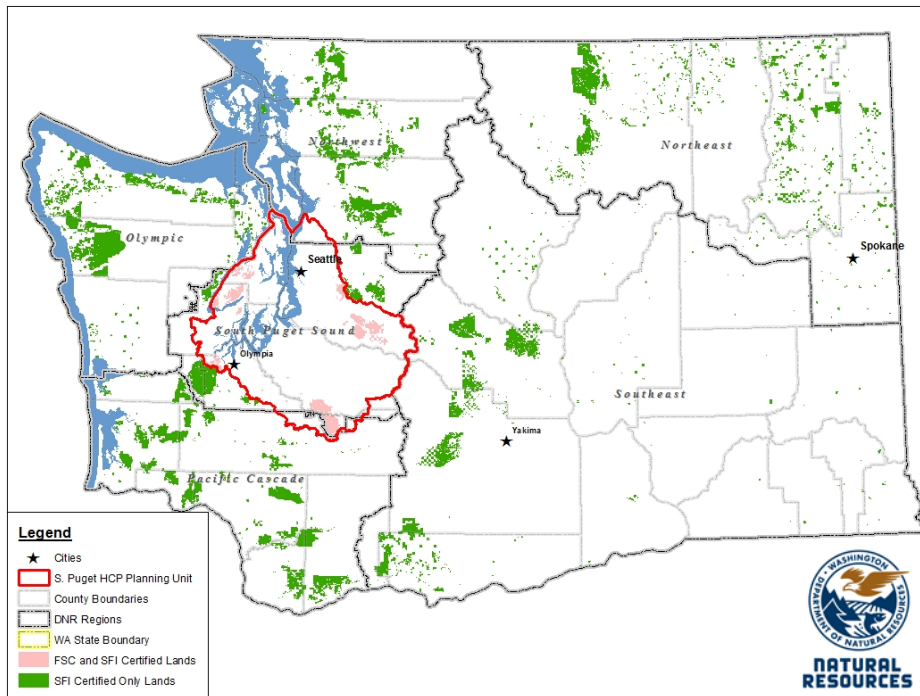
Certified forests are grown to an approved set of standards which demonstrate environmentally responsible, socially beneficial, and economically viable management practices that promote responsible forestry. This unique commitment to responsible forestry recognizes that forest landowners play a critical role in ensuring the long-term health and sustainability of our forests.

Forest Stewardship Council® (FSC®) is an independent, non-profit organization that promotes responsible management of the world's working forests through the development of forest management standards, a voluntary certification system, and trademarks that provide recognition and value to products bearing the FSC label in the marketplace. FSC standards ensure forestry is practiced in an environmentally responsible, socially beneficial, and economically viable way.

Sustainable Forestry Initiative Inc. is an independent, non-profit organization internationally endorsed and accepted around the world. The Sustainable Forestry Initiative® (SFI) program is based on the premise that responsible environmental behavior and sound business decisions can coexist. Its three-chamber Board of Directors governs all aspects of the SFI® program, with equal representation from the environmental, economic, and social sectors.

Currently, all Department of Natural Resources (DNR)-managed forestlands and conservation areas in Washington State are certified under the SFI program Standard. Forestlands within DNR's South Puget Habitat Conservation Plan Planning Unit, located within parts of King, Pierce, Thurston, Lewis, Kitsap, and Mason counties, are dually certified under both the FSC-US Forest Management Standard and the SFI program Standard.

Certification under each standard involves an inspection audit of the landowner's forest management activities by an independent, accredited third-party to verify that it meets specified forest management principles. If the forest unit complies with the specific standard, the landowner receives a certificate of conformance ensuring that responsible forestry is being practiced. Both standards encourage integration of perpetual growing and harvesting of trees with strong measures to protect wildlife, plants, soil, water, and air quality. Both standards provide a seal of approval that forests certified under these principles are well-managed. The global marketplace recognizes and endorses multiple forest certification standards. Each standard has individual market niches. By being dually certified, DNR can maximize its customer base and provide choices to the consumer.



DNR's FSC certificate number is: BV-FM/COC-080501

DNR's SFI certificate number is: PwC-SFIFM-513

DNR-managed forestlands within the South Puget Habitat Conservation Plan Planning Unit (located within parts of King, Pierce, Thurston, Lewis, Kitsap, and Mason counties) are certified as being in compliance with the Forest Stewardship US Forest Management Standard.

To learn more about chain of custody and demonstrating that your timber is derived from a responsibly managed forest and/or to learn more about becoming a participant in the FSC Program, visit <https://us.fsc.org/>.

To learn more about DNR timber sales certified under the FSC Standard, visit [www.dnr.wa.gov](http://www.dnr.wa.gov).

FSC A.C. owns all right, title, and interest in and to the Forest Stewardship Council trademarks.

All DNR-managed forested state trust lands across the state have been certified as being in compliance with the Sustainable Forestry Initiative Forest Management Standard.

To learn more about chain of custody and demonstrating that your timber is derived from a responsibly managed forest and/or to learn more about becoming a participant in the SFI program, visit [www.sfiprogram.org](http://www.sfiprogram.org).

To learn more about DNR timber sales certified under the SFI program Standard, visit [www.dnr.wa.gov](http://www.dnr.wa.gov).

SFI Marks are registered marks owned by Sustainable Forestry Initiative Inc.

**To learn more about certification on DNR-managed forested state trust lands, visit <https://www.dnr.wa.gov/programs-and-services/product-sales-and-leasing/timber-sales/forest-certification> or contact:**

**Product Sales & Leasing Division, Product Sales Section:**

Koshare Eagle, Assistant Division Manager, 360-902-1561, [koshare.eagle@dnr.wa.gov](mailto:koshare.eagle@dnr.wa.gov)  
Steve Teitzel, Operations, 360-902-1741, [steve.teitzel@dnr.wa.gov](mailto:steve.teitzel@dnr.wa.gov)

**Forest Resources Division, HCP and Scientific Consultation Section:**

Allen Estep, Assistant Division Manager, 360-902-2898, [allen.estep@dnr.wa.gov](mailto:allen.estep@dnr.wa.gov)  
Douglas Kennedy, Forest Certification Program Lead, 360-902-1283, [douglas.kennedy@dnr.wa.gov](mailto:douglas.kennedy@dnr.wa.gov)

# Washington State Department of Natural Resources (DNR)

## **Bidder's/Purchaser's Inspection of Sale Area and Forest Products**

Acreage estimates and volume estimates contained within each timber notice of sale and each timber sale contract are made only for administrative and identification purposes. Except as expressly provided by the timber sale contract, the purchaser shall be responsible for paying the entire purchase price, even if the actual acreage or timber volume varies from the estimated quantity or volume shown.

All prospective bidders have the opportunity and are expected to inspect the sale area and the forest products located thereon. Bidders shall not rely on any representations by the State including, but not limited to, acreage estimates, volume estimates, appraisal or pre-bid documentation. The successful bidder/purchaser will further warrant that they have entered the timber sale contract without any reliance upon the DNR's volume estimates, acreage estimates, appraisals, pre-bid documentation, or any other representation by the DNR.

*Any timber sale contract arising out of these public auctions will require the successful purchaser to warrant that they are entering the timber sale contract based solely upon their own judgment of the value of the forest products, formed after their own examination and inspection of both the timber sale area and the forest products being sold.*

## **Exclusion and Disclaimer of Warranties**

The PARTIES AGREE that the IMPLIED WARRANTIES OF MERCHANTABILITY AND FITNESS FOR A PARTICULAR PURPOSE, and ALL OTHER WARRANTIES EXPRESS OR IMPLIED, ARE EXCLUDED from this transaction, and shall not apply to the goods sold. For example, THE FOLLOWING SPECIFIC MATTERS ARE NOT WARRANTED, and are EXCLUDED from this transaction:

- a. ***The merchantability of the forest products.*** The use of the term "merchantable" in any document is not intended to vary the foregoing.
- b. ***The condition of the forest products.*** All forest products will be conveyed "AS IS."
- c. ***The acreage contained within any sale area.*** Any acreage descriptions appearing in the timber notices of sale, timber sale contract, timber sale map or other documents are estimates only, provided solely for administrative and identification purposes.
- d. ***The volume, quality, or grade of the forest products.*** The descriptions of the forest products to be conveyed are estimates only, made solely for administrative and identification purposes.
- e. ***The correctness of any soil or surface conditions, presale construction appraisals, investigations, and all other pre-bid documents prepared by or for the State.*** These documents have been prepared for the State's appraisal purposes only.
- f. ***That the sale area is free from threatened or endangered species, or their habitat.*** The State is not responsible for any interferences with forestry operations that result from the presence of any

threatened or endangered species, or the presence of their habitat, within the sale area.

g. *That the forestry operations to be performed under this contract will be free from regulatory actions by governmental agencies.* The State is not responsible for actions to enforce regulatory laws, such as the Washington Forest Practices Act (Chapter 76.09 RCW), taken by the Department of Natural Resources or any other agency that may affect the operability of these timber sales.

h. Items contained in any other documents prepared for or by the State.

Please also see timber sale contract clause G-060 for further information.

## **BIDDING PROCEDURES FOR TIMBER AUCTIONS**

*The general requirements that follow are a part of all Timber Notices of Sale to be auctioned by the Department of Natural Resources (DNR).*

### **General Information**

*The State reserves the right to waive minor irregularities and the right to reject any or all bids.*

- A. This book contains the timber notices of sale and maps for each timber sale scheduled to be auctioned. More specific information can be obtained by contacting the appropriate region office at the number listed on the back cover of this book.
- B. The timber notice of sale is a summary of sale information. For more specific information, interested parties are encouraged to view the Appraisal Packets on the DNR Internet Site @ [www.dnr.wa.gov](http://www.dnr.wa.gov), this will take you directly to the Product Sales Section. The Appraisal Packets contain **DRAFT** copies of the timber notice of sale, map, contract, road plan, cruise data, precruise and cruise narrative, Forest Practices Application (FPA).
- C. The sale preview packets may be obtained at no charge for individual sales by visiting the appropriate region office.
- D. Timber sale contracts contain extensive terms and conditions that will be binding upon successful high bidders. Each bidder should carefully review all terms contained in the appropriate **DRAFT** timber sale contract prior to bidding on a sale, and should review the final contract prior to signing. **DRAFT** timber sale contracts are contained in the preview and presales packets and are available upon request at the respective region office.
- E. Sales advertised in this book have not been approved by the Board of Natural Resources and are subject to the Board's approval before they will be sold. The Board meets and approves sales approximately six weeks prior to auction. All sales are subject to confirmation by the DNR under RCW 79.15.120.
- F. The State does not guarantee the accuracy of any information contained herein pertaining to particular sales. Therefore, all prospective purchasers are expected to make their own independent inspections and appraisals prior to bidding.
- G. If any conflict exists between the information in the Timber Notice of Sale, timber sale map,



sale preview packets and that in the timber sale contract, the **signed contract will prevail**.

H. Purchasers must pay the Forest Excise Tax on the bid price, permanent road construction costs, and other considerations. The tax rate is 5% without the EARR credit and 4.2% with the credit. For more information contact the Department of Revenue, Forest Tax Section at 1-800-548-8829.

I. **Within 30 days of sale confirmation, the apparent high bidder will provide to the State the Performance Security** specified on each Notice of Sale. **The successful bidder also agrees to return a signed contract to the State within 30 days of confirmation.** Failure to provide a signed contract to the state within 30 days of confirmation may result in a loss of bidder's rights to the products sold and forfeiture of initial deposit moneys.

J. Each DNR region office has information about sales offered in that region. For further information, contact the respective DNR region office. Region office addresses and telephone numbers appear on the back cover of this booklet.

K. The purchaser assumes the responsibility for any costs associated with extra maintenance or repair levied by a county for any county road used by the purchaser.

## **Bidding Process**

A. All timber will be auctioned using the sealed bid method.

B. Bids submitted on day of auction must be in the bid box at the specified auction location before 10:00 a.m. The respective DNR region office must receive mailed bids by 4:30 p.m., on the last business day before the auction. Bidders assume all risk for the method of delivery.

C. The DNR has the right to reject bid forms that are completed incorrectly. *All bid forms must have an original signature on behalf of the person or entity submitting the bid, and must be on the form provided in this booklet or a photocopy thereof. Revised documents are not permissible.* Bidding instructions are on the back of the Sealed Bid Form. A bid deposit must be included in the sealed bid envelope unless using a Timber Sale Statewide Bid Bond.

D. All bids must include the completed Sealed Bid Form and bid deposit.

E. Bids will be opened in each respective region in the order in which sales appear in the Public Auction Sale of Timber book (alphabetically by county and by agreement number). Sales added after the book is printed will be inserted to retain this order. Sort sales may be auctioned out of this sequence at the State's convpignce.

F. If a tie bid occurs, the names of the tie bidders will be placed in a hat and the successful bidder will be determined by a drawing.

G. For sales offered on a stumpage basis, the apparent high bidder on a particular sale will have the option of withdrawing additional sealed bids submitted for any remaining sales to be auctioned. The apparent high bidder must exercise this option within two minutes after the apparent high bidder is announced. **This option is not available for sales offered on a delivered basis.**

## **Auction Time and Location**

Auctions will start at 10:00 a.m. and close at 4:00 p.m. on the date and at the location specified in each Timber Notice of Sale.

## **Bid Deposits**

- A. Required bid deposits are listed on each Timber Notice of Sale.
- B. Bid deposits must be in the form of cash, certified check, cashiers' check, money order or bid bond.
- C. Bid bonds may be either a Timber Sale Statewide Bid Bond or a Timber Sale Per Sale Bid Bond.
- D. All bid deposits shall be submitted by the person or entity submitting the bid and made payable to the Department of Natural Resources. **Third party deposits will not be accepted.**

### **Timber Sale Per Sale Bid Bonds**

- A. The Per Sale Bid Bond shall guarantee payment of the bid deposit **within ten days of auction.**
- B. The balance between the bid bond and the Initial Deposit payment is due **by 4:30 p.m., on the day of auction.**
- C. Additional forms and instructions for a Per Sale Bid Bond are available at any DNR region office.

### **Timber Sale Statewide Bid Bond**

- A. Statewide Bid Bonds shall guarantee payment of the Initial Deposit on any statewide timber sale while the bond is in effect.
- B. The Statewide Bid Bond must be received by the Department of Natural Resources, Product Sales and Leasing Division, P.O. Box 47014, Olympia, Washington, 98504-7014, ten days in advance of the auction date. The bond shall be in the amount of \$150,000.00.
- C. Successful bidders using a Statewide Bid Bond must pay the total Initial Deposit payment (10% of the total bid price) **by 4:30 p.m., on the day of the auction.**
- D. A Statewide Bid Bond cannot be used to secure the Initial Deposit payment due the day of auction.
- E. Additional forms and instructions for a statewide bid bond are available at any DNR region office.

### **Payments**

The initial deposit for a sale is 10% of the total bid value as submitted by the apparent high bidder (25% if the bidder is a defaulter as defined under WAC 332-140-300) and never less than \$5,000.00 for lump sum sales. For Lump Sum sales appraised at less than \$5,000.00, the entire bid value is due on day of auction.

- A. Apparent high bidders using cash, certified check, cashiers' check or money order as a bid deposit must pay the total Initial Deposit amount by 4:30 p.m. on auction day.
- B. Apparent high bidders using a Timber Sale Per Sale Bid Bond as a bid deposit must pay the difference between the bid deposit and the total initial deposit by 4:30 p.m., on the day of auction. The bid bond amount must be replaced with a certified check, cashiers' check, bank draft, cash, money order, or wire transfer within ten days of the auction.
- C. Apparent high bidders using a Timber Sale Statewide Bid Bond must pay the entire Initial Deposit amount by 4:30 p.m. on the day of auction.

### **Fees due on the day of sale must be paid by 4:30 p.m.**

All payments must be in the form of a certified check, cashiers' check, bank draft, cash, money order or wire transfer.

## **Eligibility to Bid**

In order to bid on State timber sales you must be:

- 18 years of age (or have a co-signer who meets the eligibility requirements)
- Licensed to do business in the State of Washington
- Eligible to bid on Export Restricted timber
- Authorized to submit bids

## **Authorized Representatives**

Company officers or company authorized representatives may bid on State sales, sign State documents, or sign checks. A list of authorized representatives and their specific authorities must be submitted, in writing, to the Department of Natural Resources, Product Sales and Leasing Division, P.O. Box 47014, Olympia, Washington, 98504-7014, ten days in advance of the auction. A company owner or officer must sign this submittal.



**Summary Report of All Sales for the Month of August 2019**

---

**Board Sales**

<u>County</u>	<u>Region</u>	<u>Agree #</u>	<u>FSC® Sale Name</u>	<u>Volume</u>	<u>Value</u>
Clallam	Olympic	98721	TAYLOR FISH	1,098	\$320,000.00
Clallam	Olympic	98722	BOULDERDASH	7,201	\$884,000.00
Clark	Pacific Cascade	98126	MOZZARELLA VRH THIN	1,553	\$344,000.00
Jefferson	Olympic	97948	CLEAR CHOICE	9,205	\$1,102,000.00
King	South Puget	97369	* PILING	4,586	\$1,035,000.00
Skagit	Northwest	97856	CYGNUS	1,645	\$648,000.00
Yakima	Southeast	98384	Q ELK VIEW SORTS	2,778	\$1,345,370.00
			<b>Total</b>	===== 28,066	===== \$9,819,246.00



*Scan with your smartphone or tablet to go  
to the August 2019 timber auction page*





TIMBER NOTICE OF SALE

SALE NAME: TAYLOR FISH

AGREEMENT NO: 30-98721

AUCTION: August 28, 2019 starting at 10:00 a.m., Olympic Region Office, Forks, WA

COUNTY: Clallam

SALE LOCATION: Sale located approximately 16 miles southeast of Port Angeles

PRODUCTS SOLD AND SALE AREA:

All timber, except trees marked with a band of blue paint and trees bounded out by Leave Tree Area tags; bounded by Timber Sale Boundary tags in Units 2 and 4; bounded by Timber Sale Boundary tags and a timber type change in Units 1 and 3. Located on part(s) of Sections 2, 11, 12 and 13 all in Township 29 North, Range 4 West, W.M., containing 92 acres, more or less.

CERTIFICATION: This sale is certified under the Sustainable Forestry Initiative® program Standard (cert no: PwC-SFIFM-513)

ESTIMATED SALE VOLUMES AND QUALITY:

Table with columns: Species, Avg DBH, Ring Count, Total MBF, and MBF by Grade (1P, 2P, 3P, SM, 1S, 2S, 3S, 4S, UT). Rows include Douglas fir, Red cedar, Hemlock, Red alder, Maple, and Sale Total.

MINIMUM BID: \$320,000.00

BID METHOD: Sealed Bids

PERFORMANCE SECURITY:

\$64,000.00

SALE TYPE: Lump Sum

EXPIRATION DATE: October 31, 2020

ALLOCATION: Export Restricted

BID DEPOSIT: \$32,000.00 or Bid Bond. Said deposit shall constitute an opening bid at the appraised price.

HARVEST METHOD: 100% ground based. Falling and Yarding will not be permitted from November 1 to April 30 unless authorized in writing by the Contract Administrator.

ROADS: 4.25 stations of required construction. 13.15 stations of required reconstruction. 15.55 stations of required prehaul maintenance. 32.45 stations of decommissioning. Road construction, reconstruction, decommissioning, rock haul and timber haul will not be permitted from November 1 to April 30, or on weekends and State recognized holidays unless authorized in writing by the Contract Administrator

ACREAGE DETERMINATION

CRUISE METHOD: Sale acreage was 100% GPS'd. Sale units were cruised using a variable plot sample.

FEES: Within seven days of sale date, Purchaser must provide Department of Natural Resources with a cashier's check to in the amount of \$500.00 made payable to JLCG LLC for a road



## TIMBER NOTICE OF SALE

use permit. \$18,666.00 is due on day of sale. \$9.00 per MBF is due upon removal. These are in addition to the bid price.

**SPECIAL REMARKS:** Timber harvest and road construction are in close proximity to a public utility line. It is the Purchaser's responsibility to contact the P.U.D. and identify all utilities prior to beginning operations. There is also an irrigation canal in near Unit 1. The Purchaser is responsible for contacting the Agnew Irrigation District a minimum of two days prior to beginning operations. There are locked gates on the PA-L-3510 and Fish Hatchery roads. Contact the Olympic Region Dispatch Center at 360-374-2811 to obtain an AA-1 key.

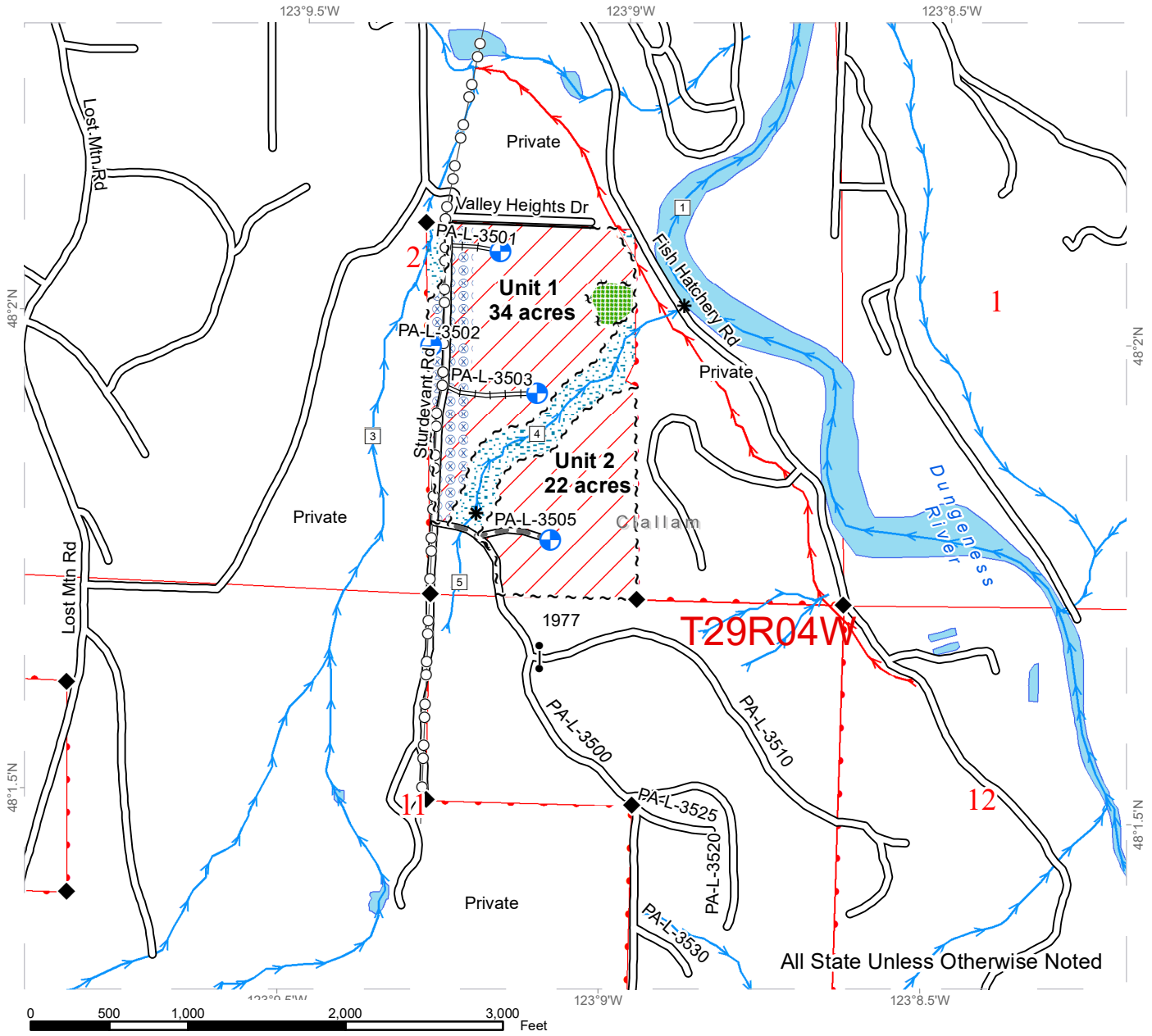
There are five non- tradable leave trees located in Unit 3 that are each bounded with four Leave Tree Area tags and pink flashers.



# TIMBER SALE MAP

**SALE NAME:** TAYLOR FISH  
**AGREEMENT #:** 30-098721  
**TOWNSHIP(S):** T29R4W  
**TRUST(S):** State Forest Purchase (2), State Forest Transfer (1)

**REGION:** Olympic Region  
**COUNTY(S):** Clallam  
**ELEVATION RGE:** 480-1,030'



DNR Managed Lands	Sale Boundary Tags	Irrigation Canal
Variable Retention Harvest	Timber Type Change	Streams
Leave Tree Area	Leave Tree Tags	Stream Type
Riparian Mgt Zone	Existing Roads	Stream Type Break
Hazard Abatement Area	Required Pre-Haul Maintenance	Survey Monument
	Required Construction	Landing - Proposed
	Required Reconstruction	Gates
	Power Lines	

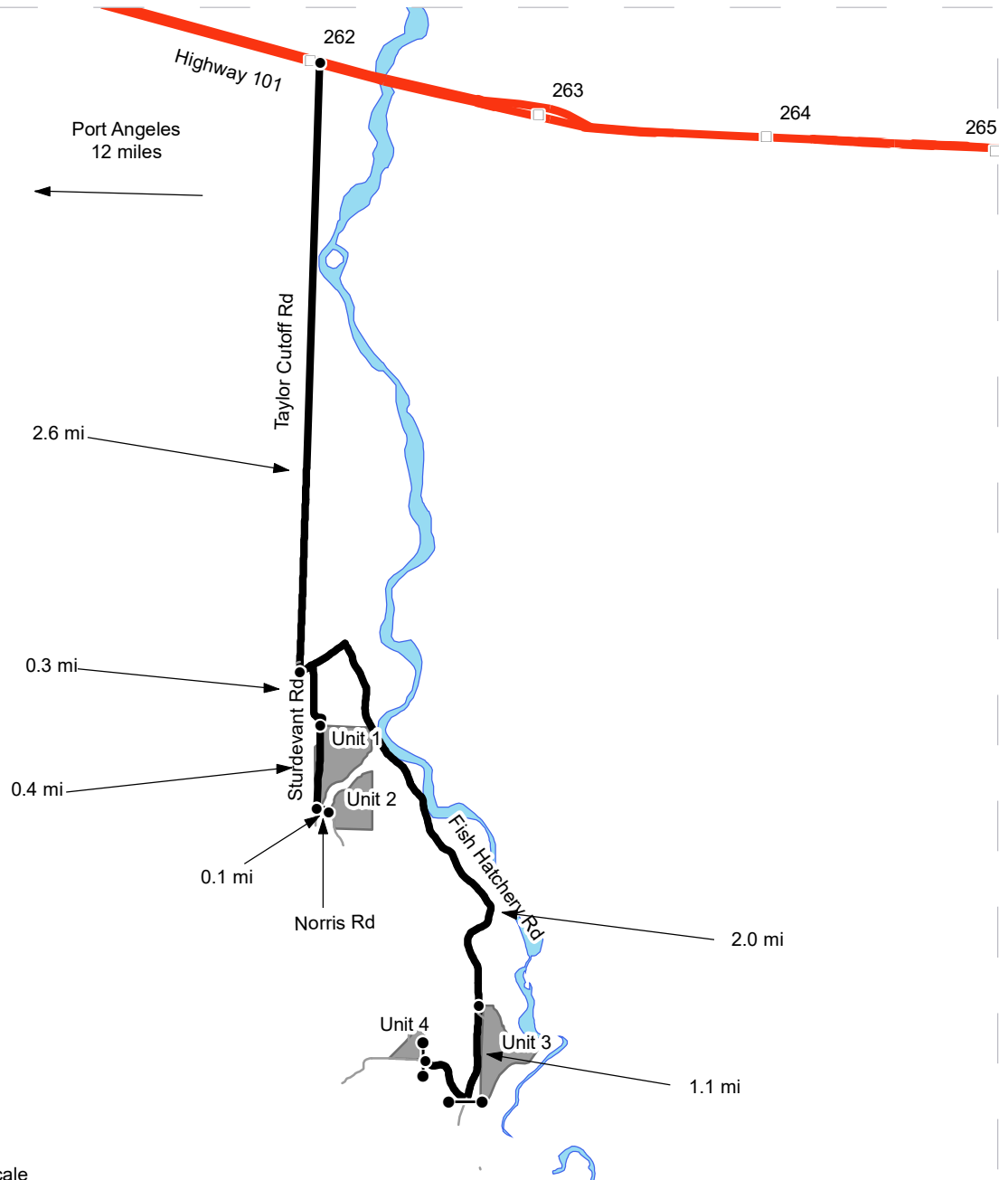




# DRIVING MAP

**SALE NAME:** TAYLOR FISH  
**AGREEMENT#:** 30-098721  
**TOWNSHIP(S):** T29R4W  
**TRUST(S):** State Forest Purchase (2), State Forest Transfer (1)

**REGION:** Olympic Region  
**COUNTY(S):** Clallam  
**ELEVATION RGE:** 480-1,030'



Map may not be to scale

	Timber Sale Unit
	Open Water
	Highway
	Haul Route
	Other Road
	Milepost Markers
	Gate

**DRIVING DIRECTIONS:**

All Units

From Port Angeles, head east on Hwy 101 for approximately 12 miles. Just past MP 262, turn right (south) on Taylor Cutoff Rd. Continue on Taylor Cutoff Rd for approximately 2.6 miles. Turn left (east) on Fish Hatchery Rd and then an immediate right (south) on Sturdevant Rd. Continue on Sturdevant Rd for 0.3 miles to access Unit 1. Continue south for approximately 0.4 miles and turn left (east) on Norris Rd. Continue for 0.1 miles to access Unit 2. From the end of Taylor Cutoff Rd turn left (east) on Fish Hatchery Rd and continue for 2.0 miles to access Unit 3. Continue for 1.1 miles on Fish Hatchery Rd to access Unit 4.







TIMBER NOTICE OF SALE

SALE NAME: BOULDERDASH

AGREEMENT NO: 30-98722

AUCTION: August 28, 2019 starting at 10:00 a.m., Olympic Region Office, Forks, WA

COUNTY: Clallam

SALE LOCATION: Sale located approximately 19 miles northwest of Forks, WA

PRODUCTS SOLD AND SALE AREA:

All timber, except trees marked with a band of blue paint or bounded out by leave tree area tags, bounded by timber sale boundary tags and a property line in Unit 1; timber sale boundary tags and the D-5089 Road in Units 2, 3 and 7; timber sale boundary tags and the D-5090 Road in Unit 4; timber sale boundary tags in Unit 5; timber sale boundary tags, the D-5089 Road, and a timber type change in Unit 6; timber sale boundary tags and a timber type change in Unit 8;

All timber bounded by right of way boundary tags shown as Units 9, 10, 11 and 12 on part(s) of Sections 24 all in Township 28 North, Range 15 West, Sections all in Township 29 North, Range 15 West, Sections 34 and 35 all in Township 30 North, Range 15 West, W.M., containing 238 acres, more or less.

CERTIFICATION: This sale is certified under the Sustainable Forestry Initiative® program Standard (cert no: PwC-SFIFM-513)

ESTIMATED SALE VOLUMES AND QUALITY:

Table with columns: Species, Avg DBH, Ring Count, Total MBF, and MBF by Grade (1P, 2P, 3P, SM, 1S, 2S, 3S, 4S, UT). Rows include Hemlock, Spruce, Douglas fir, Red alder, Red cedar, and Sale Total.

MINIMUM BID: \$884,000.00

BID METHOD: Sealed Bids

PERFORMANCE SECURITY:

\$100,000.00

SALE TYPE: Lump Sum

EXPIRATION DATE: October 30, 2021

ALLOCATION: Export Restricted

BID DEPOSIT: \$88,400.00 or Bid Bond. Said deposit shall constitute an opening bid at the appraised price.

HARVEST METHOD: 40% cable/60% ground - no rubber tired skidders will be allowed if skidding and rutting requirements can be met and a harvest plan is submitted and approved. 30' Equipment limitation zones on all typed waters.

ROADS: 17.00 stations of optional construction. 37.20 stations of required prehaul maintenance. 151.55 stations of optional prehaul maintenance. 8.90 stations of decommissioning. Purchaser must strip one acre in Mora Pit per the pit plan as well as clear and remove vegetation from Ole's Boulder Pit. Road construction will not be permitted from October



## TIMBER NOTICE OF SALE

15 to April 15 unless authorized in writing by the Contract Administrator on portions of the D-5089, D-5090, D-5090.11, D-5090.2, D-5090.3, and D-5090.31 Roads; and from October 1 to June 30 on the D-5089.2 Road. In addition, On the D-5090 (6+65 to 10+60), 46+00 TO 63+50), there will be no activities (other than haul), from one hour before to two hours after official sunrise and from one hour before to one hour after official sunset from April 1 to September 23 for marbled murrelet timing restrictions.

### **ACREAGE DETERMINATION**

**CRUISE METHOD:** Sale acreage was 100% GPS'd. Sale units were cruised using a variable plot sample.

**FEES:** Within seven days of auction, Purchaser shall provide the Department of Natural Resources with a cashiers check in the amount of \$1,284.00, made payable to Rayonier Operating Company LLC, for a Road Use Permit. \$122,417.00 is due on day of sale. \$9.00 per MBF is due upon removal. These are in addition to the bid price.

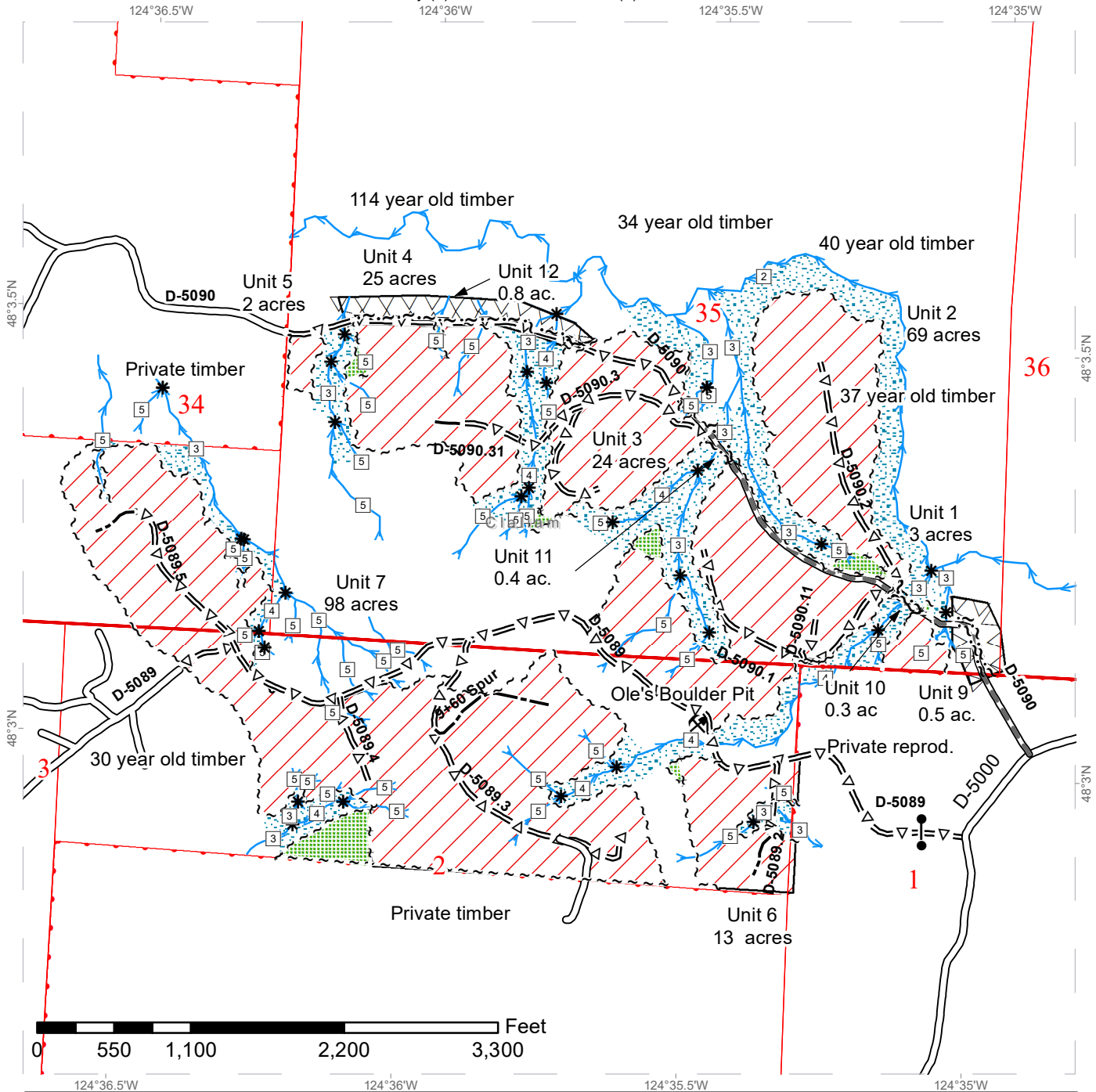
**SPECIAL REMARKS:** There are locked gates on the D-5089, Mora Pit and Loop Pit Roads - contact the Olympic Region Dispatch Center at 360-374-2811 to obtain a AA-1 key.

Culvert and fill replacement work is currently scheduled to take place on the D-5000 Road at MP 5.5 sometime during the hydraulic season of 2019, which will result in the road being closed for up to four weeks at a time. State shall give at least two weeks notice to Purchaser before closure begins.

# TIMBER SALE MAP

**SALE NAME:** BOULDERDASH  
**AGREEMENT #:** 30-098722  
**TOWNSHIP(S):** T28N R15W  
**TRUST(S):** Common School and Indemnity (3), State Forest Transfer (1)

**REGION:** Olympic Region  
**COUNTY(S):** Clallam  
**ELEVATION RGE:** 50' - 815'



**Legend**

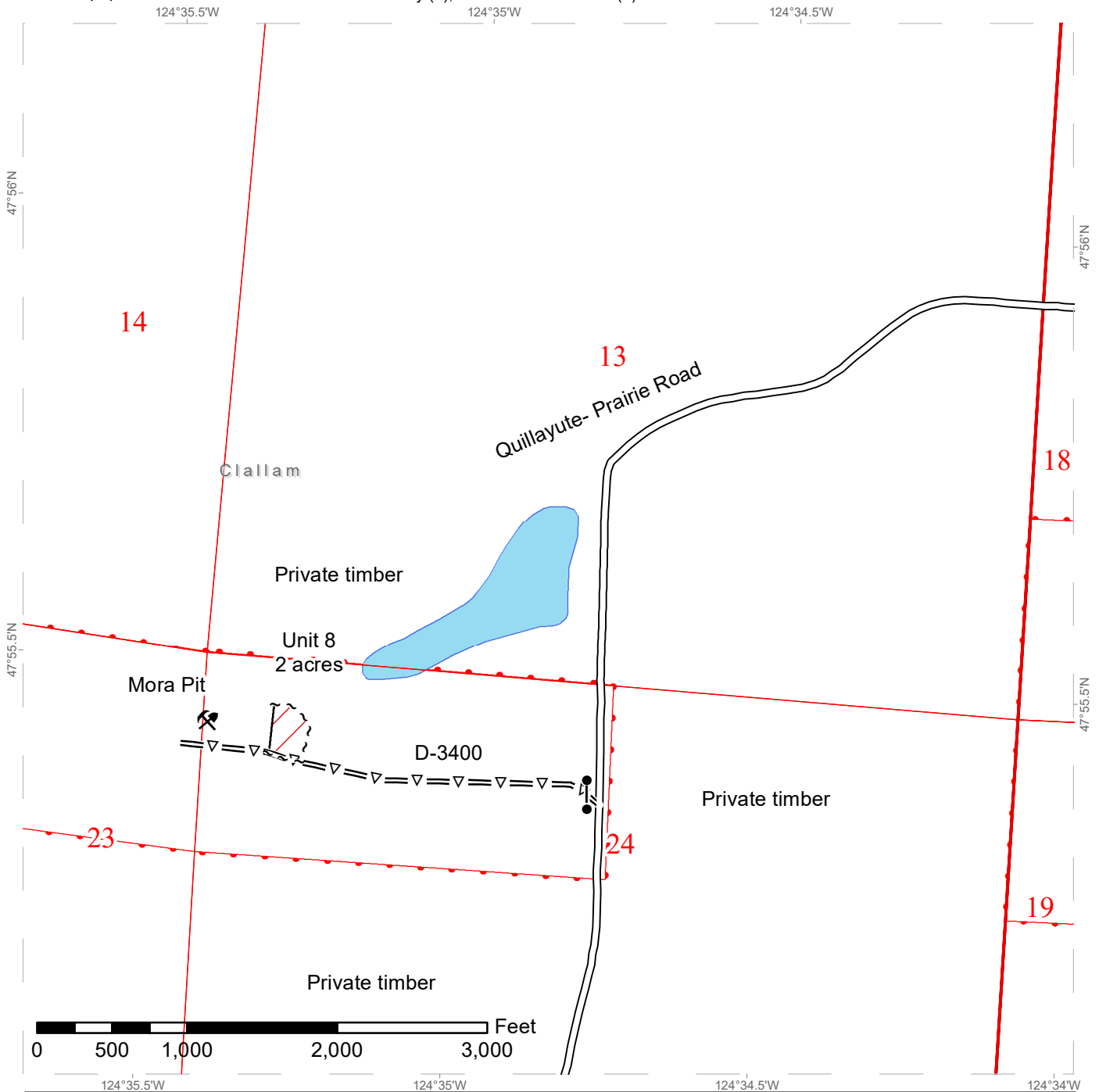
Existing Roads	Gate	Leave Tree Area	County Boundary
Optional Construction	Rock Pit	Riparian Mgt Zone	DNR Managed Lands
Optional Pre-Haul Maintenance	Streams	Timing Restriction	Public Land Survey Townships
Required Pre-Haul Maintenance	Variable Retention Harvest	Public Land Survey Sections	
Sale Boundary Tags			
Leave Tree Tags			
Right of Way Tags			



# TIMBER SALE MAP

**SALE NAME:** BOULDERDASH  
**AGREEMENT #:** 30-098722  
**TOWNSHIP(S):** T28N R15W  
**TRUST(S):** Common School and Indemnity (3), State Forest Transfer (1)

**REGION:** Olympic Region  
**COUNTY(S):** Clallam  
**ELEVATION RGE:** 50' - 815'



Legend			
	Existing Roads		County Boundary
	Optional Pre-Haul Maintenance		Rock Pit
	Sale Boundary Tags		Open Water
	Variable Retention Harvest		DNR Managed Lands
			Public Land Survey Townships
			Public Land Survey Sections

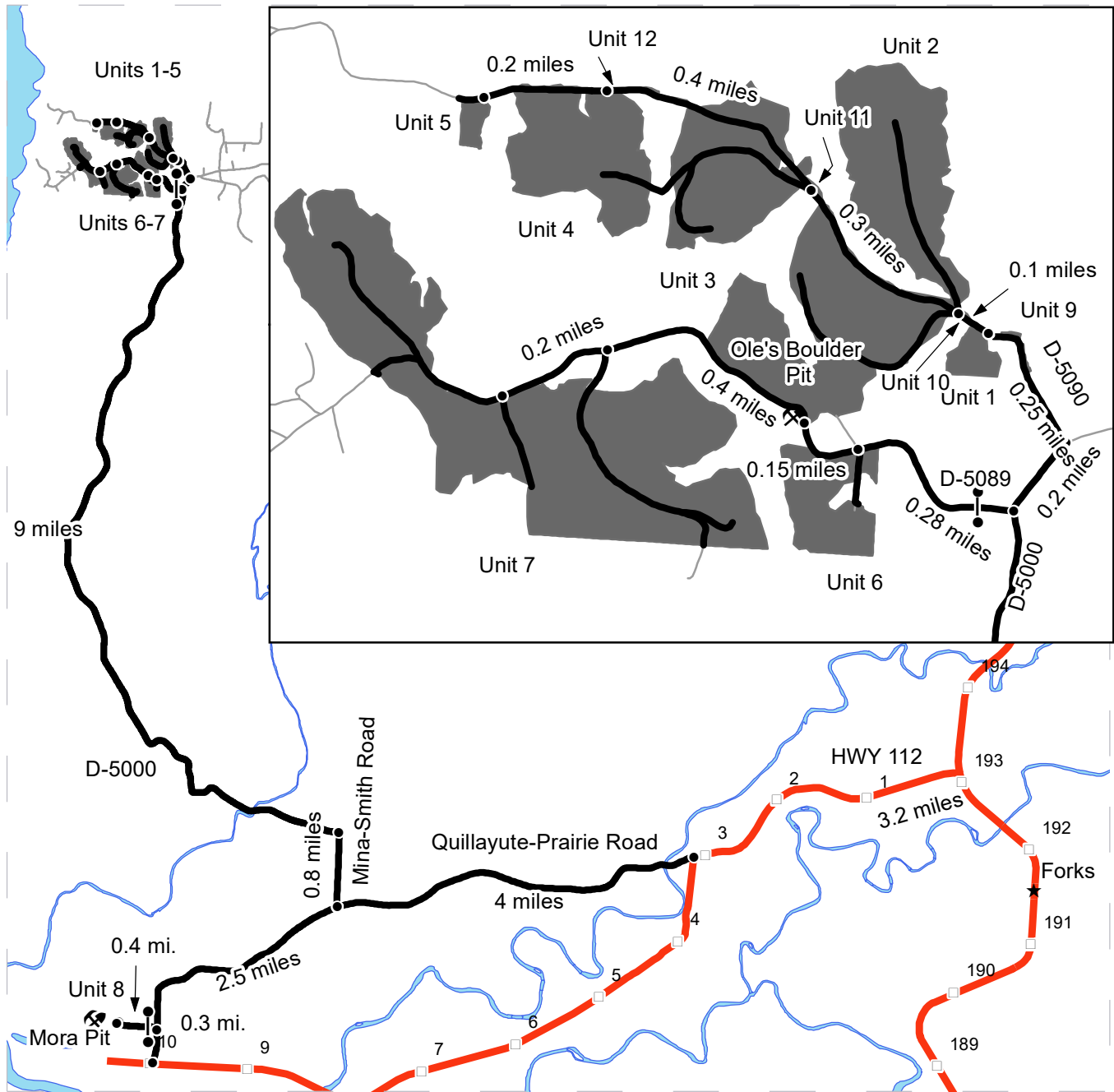




# DRIVING MAP

**SALE NAME:** BOULDERDASH  
**AGREEMENT#:** 30-098722  
**TOWNSHIP(S):** T29R15W, T30R15W, T28R15W  
**TRUST(S):** Common School and Indemnity (3), State Forest Transfer (1)

**REGION:** Olympic Region  
**COUNTY(S):** Clallam  
**ELEVATION RGE:** 50' - 815'



From HWY 101 at MP193 turn West onto HWY 112, continue for 3.2 miles and then turn right for the Quillayute-Prairie Road. Continue for 4 miles, turn right onto Mina-Smith Road. Continue 0.8 miles and turn left onto the D-5000. Continue on the D-5000 for 9 miles and turn left on the D-5089. Continue 0.28 miles to Unit 6. Continue 0.15 miles past Unit 6 to Unit 2 and Ole's Boulder Pit. Continue 0.4 miles past Unit 2 to Unit 7. For Units 1-5 from the D-5000, D-5089 junction continue North on the D-5000 for 0.2 miles to the D-5090. Turn left on the D-5090 and continue 0.25 miles to Unit 1. Continue 0.1 miles past Unit 1 to Unit 2. Continue 0.3 miles past Unit 2 to Unit 3. Continue 0.4 miles past Unit 3 to Unit 4. Continue 0.2 miles past Unit 4 to Unit 5.

Unit 8 & Mora Pit: From HWY 101 at MP193 turn West onto HWY 112, continue for 3.2 miles and then turn right for the Quillayute-Prairie Road. Continue 6.5 miles and turn left onto D-3400, continue 0.4 miles to Mora pit and Unit 8 on the left side of the road.

# DRIVING MAP

**SALE NAME:** BOULDERDASH  
**AGREEMENT#:** 30-098722  
**TOWNSHIP(S):** T29N R13W  
**TRUST(S):** Common School and Indemnity (3), State Forest Transfer (1)

**REGION:** Olympic Region  
**COUNTY(S):** Clallam  
**ELEVATION RGE:** 50' - 815'



	Haul Route
	Milepost Markers
	Highway
	Town
	Distance Indicator
	Gate
	Rock Pit

**Loop Pit:**  
 From Forks drive 8 miles North on HWY 101.  
 The Pit is 0.6 miles past MP199 on the East side of the highway.





TIMBER NOTICE OF SALE

SALE NAME: MOZZARELLA VRH THIN

AGREEMENT NO: 30-98126

AUCTION: August 29, 2019 starting at 10:00 a.m., COUNTY: Clark Pacific Cascade Region Office, Castle Rock, WA

SALE LOCATION: Sale located approximately 21 miles east of Battle Ground

PRODUCTS SOLD AND SALE AREA:

All timber, except leave trees bounded by yellow "Leave Tree Area" tags with pink flagging, leave trees marked with blue paint, snags, and all down timber greater than 36 inches in diameter bounded by the following: white "Timber Sale Boundary" tags with pink flagging, private property, reprod, and the L-1123E road in Unit 1; orange paint marked trees along L-1123E road in Unit 1; white "Timber Sale Boundary" tags with pink flagging and the L-1123 road in Unit 2; white "Timber Sale Boundary" tags with pink flagging, and the L-1121 road in Unit 3; white "Timber Sale Boundary" tags with pink flagging, and property line in Unit 4; All timber bound by the following: Orange "Right of Way" tags and orange flagging in Units 6(ROW), 7(ROW), 8(ROW), and 9(ROW)

All timber as describe in Schedule A bound by: white "Timber Sale Boundary" tags with pink flagging, blue "Special Management Boundary" tags, reprod, and the L-1121 road in Unit 5 on part(s) of Sections 2 and 3 all in Township 3 North, Range 4 East, Sections 33, 34 and 35 all in Township 4 North, Range 4 East, W.M., containing 150 acres, more or less.

CERTIFICATION: This sale is certified under the Sustainable Forestry Initiative® program Standard (cert no: PwC-SFIFM-513)

ESTIMATED SALE VOLUMES AND QUALITY:

Table with columns: Species, Avg DBH, Ring Count, Total MBF, Total Tons, Price \$/Ton, and MBF by Grade (1P, 2P, 3P, SM, 1S, 2S, 3S, 4SUT). Rows include Douglas fir, Red alder, Hemlock, and Sale Total.

MINIMUM BID: \$27.6/ton (est. value \$344,000.00) BID METHOD: Sealed Bids

PERFORMANCE SECURITY: \$68,800.00 SALE TYPE: Tonnage Scale

EXPIRATION DATE: October 31, 2021 ALLOCATION: Export Restricted

BIDDABLE SPECIES: Douglas fir

BID DEPOSIT: \$34,400.00 or Bid Bond. Said deposit shall constitute an opening bid at the appraised price.

HARVEST METHOD: Harvesting activities are estimated to be 100% ground-based harvesting. Ground-based harvesting equipment shall be restricted to sustained slopes of 40% and less. See clause H-140 for further harvest requirements. A detailed felling and yarding plan shall be required prior to any harvest activities and approved in writing by the Contract Administrator. Ground Based Yarding will not be permitted from November 1 to April 30 unless authorized in writing by the Contract Administrator.



## TIMBER NOTICE OF SALE

---

**ROADS:** 12.97 stations of required construction. 19.90 stations of required reconstruction. 11.20 stations of optional reconstruction. 156.80 stations of required pre-haul maintenance. Rock used in accordance with the quantities on the ROCK LIST may be obtained from the L-1121 pit located in Sec 02, T03N, R04E, W.M. Rock used in accordance with the quantities on the ROCK LIST may be obtained from any commercial source at the Purchaser's expense subject to written approval from Contract Administrator. Road construction will not be permitted from October 1 to April 30 unless authorized in writing by the Contract Administrator.

### **ACREAGE DETERMINATION**

**CRUISE METHOD:** The sale acres were determined by GPS. The sale area was cruised using a variable plot cruise method.

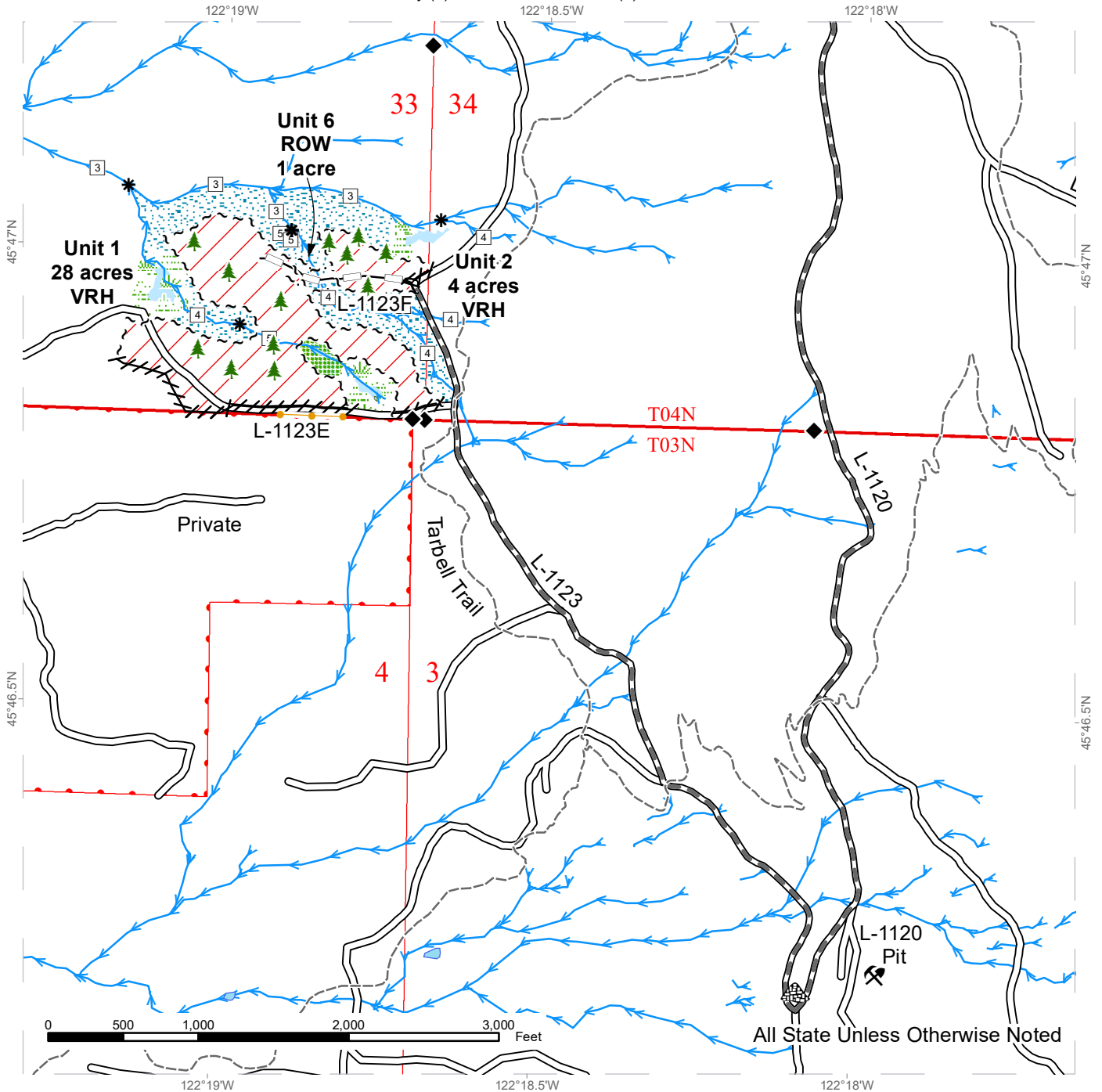
**FEES:** \$26,400.00 is due on day of sale. \$9.00 per ton is due upon removal. These are in addition to the bid price.

**SPECIAL REMARKS:** This sale contains an estimate 187 MBF of higher quality DF 2 saw logs and 205 MBF of higher quality DF 3 saw logs, derived from the cruise. See cruise for details. See driving map for gate locations. PCP 1-1 gate keys may be obtained from the Pacific Cascade Region office.

# TIMBER SALE MAP

**SALE NAME:** MOZZARELLA VRH THIN  
**AGREEMENT #:** 30-098126  
**TOWNSHIP(S):** T3R4E, T4R4E  
**TRUST(S):** Common School and Indemnity (3), State Forest Transfer (1)

**REGION:** Pacific Cascade Region  
**COUNTY(S):** Clark  
**ELEVATION RGE:** 1121-2582



All State Unless Otherwise Noted

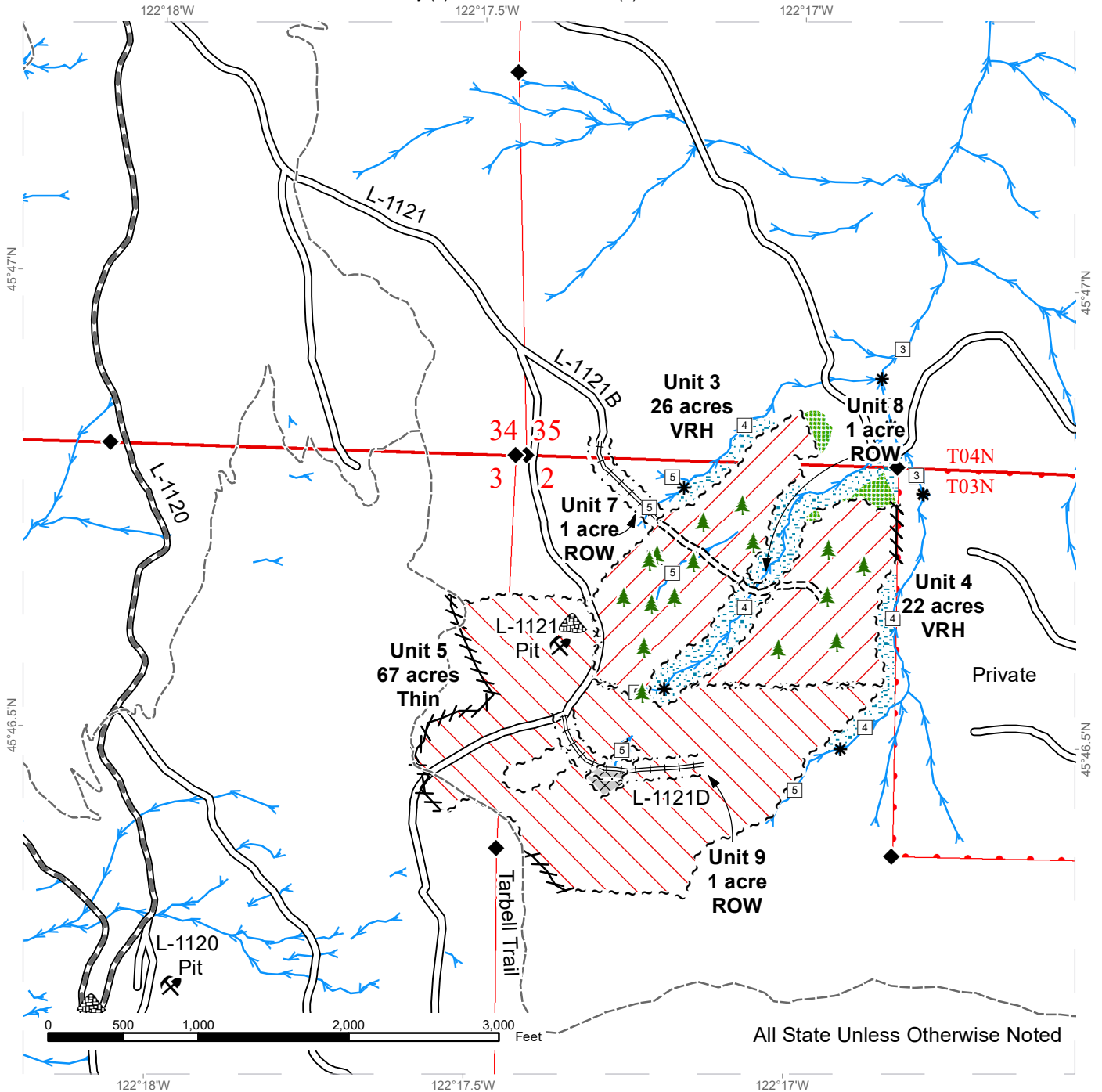
Variable Retention Harvest	Sale Boundary Tags	Streams
Leave Tree Area	Take / Removal Trees	Stream Type
Riparian Mgt Zone	Flag Line	Stream Type Break
Wetland Mgt Zone	Existing Roads	Survey Monument
Forested Wetland	Required Pre-Haul Maintenance	Leave Tree Area <1/4-acre
Wetlands - Non-forested	Optional Reconstruction	Rock Pit
	Existing Designated Trails	Stockpile



# TIMBER SALE MAP

**SALE NAME:** MOZZARELLA VRH THIN  
**AGREEMENT #:** 30-098126  
**TOWNSHIP(S):** T3R4E, T4R4E  
**TRUST(S):** Common School and Indemnity (3), State Forest Transfer (1)

**REGION:** Pacific Cascade Region  
**COUNTY(S):** Clark  
**ELEVATION RGE:** 1121-2582



All State Unless Otherwise Noted

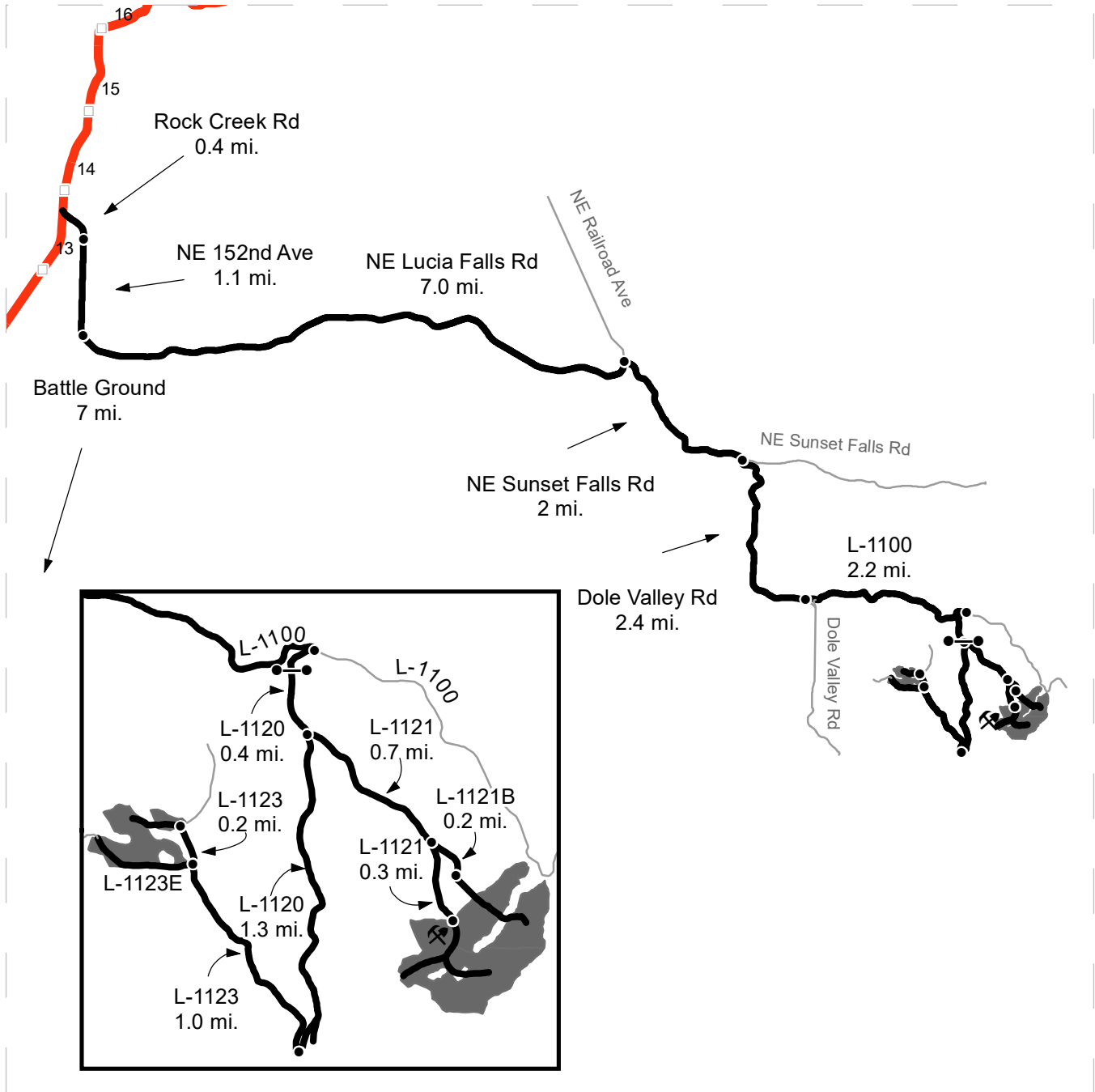
	Variable Retention Harvest		Sale Boundary Tags		Streams
	Commercial Thinning		Special Mgmt Area		Stream Type
	Leave Tree Area		Flag Line		Stream Type Break
	Riparian Mgt Zone		Existing Roads		Survey Monument
	Wetlands - Non-forested		Required Pre-Haul Maintenance		Leave Tree Area <1/4-acre
	Forested Talus		Required Construction		Rock Pit
			Required Reconstruction		Stockpile
			Existing Designated Trails		









# DRIVING MAP

**SALE NAME:** MOZZARELLA VRH THIN  
**AGREEMENT#:** 30-098126  
**TOWNSHIP(S):** T3R4E, T4R4E  
**TRUST(S):** Common School and Indemnity(3), State Forest Transfer(1)

**REGION:** Pacific Cascade Region  
**COUNTY(S):** CLARK  
**ELEVATION RGE:** 1121-2582



-  Timber Sale Unit
-  Highways
-  Milepost Markers
-  Distance Indicator
-  Gate (PCP 1-1)
-  Existing Rock Pit

**DRIVING DIRECTIONS:**

From State Route 503 (M.P. 13.5) turn east onto Rock Creek Road for 0.4 miles. Continue southeast on NE 152nd Ave for 1.1 miles to NE Lucia Falls Road. Travel east on NE Lucia Falls Road for approximately 7.0 miles. Turn east onto NE Sunset Falls Road and travel 2 miles. Turn south onto Dole Valley Road and travel 2.4 miles. Turn east on the L-1100 Road and travel 2.2 miles to the L-1120. Turn right on the L-1120 and travel 1.7 miles. Turn right on the L-1123 and travel 1.0 miles to Unit 1 on the left. Continue on the L-1123 for 0.2 miles to Unit 2 on the left. From the L-1120/L-1121 junction continue on the L-1121 for 0.7 miles then turn left on the L-1121B and travel 0.2 miles to end of road. Walk in along road grade to access Unit 3 and continue along orange-flagged L-line to access Unit 4. From the L-1121/L1121B junction continue for 0.3 miles to reach Unit 5 on the right and the top of Unit 3 on the left.









**TIMBER NOTICE OF SALE**

**SALE NAME:** CLEAR CHOICE

**AGREEMENT NO:** 30-97948

**AUCTION:** August 28, 2019 starting at 10:00 a.m.,  
Olympic Region Office, Forks, WA

**COUNTY:** Jefferson

**SALE LOCATION:** Sale located approximately 42 miles south of Forks, WA

**PRODUCTS SOLD  
AND SALE AREA:**

All timber except trees marked with a band of blue paint or bounded out by leave tree area tags, bounded by timber sale boundary tags, the C-1000 and the C-1300 in Unit 1; by timber sale boundary tags, the C-1000 and the C-1000.33 in Unit 2; by timber sale boundary tags, C-1400 and the C-1000 in Unit 3; by timber sale boundary tags, the C-1000 in Unit 4; all timber bounded by right of way tags in Unit 5 on part(s) of Sections 11, 14, 19, 20 and 21 all in Township 25 North, Range 11 West, W.M., containing 265 acres, more or less.

**CERTIFICATION:** This sale is certified under the Sustainable Forestry Initiative® program Standard (cert no: PwC-SFIFM-513)

**ESTIMATED SALE VOLUMES AND QUALITY:**

Species	Avg DBH	Ring Count	Total MBF	MBF by Grade								
				1P	2P	3P	SM	1S	2S	3S	4S	UT
Hemlock	14.2	5	6,175						1,847	3,275	930	123
Douglas fir	15.4	5	2,737						829	1,440	410	57
Silver fir	17.8		115						37	67	12	
Red alder	9.1		109						32		31	46
Spruce	16.5	3	69						28	31	3	6
Sale Total			9,205									

**MINIMUM BID:** \$1,102,000.00

**BID METHOD:** Sealed Bids

**PERFORMANCE**

**SECURITY:** \$100,000.00

**SALE TYPE:** Lump Sum

**EXPIRATION DATE:** October 15, 2021

**ALLOCATION:** Export Restricted

**BID DEPOSIT:** \$110,200.00 or Bid Bond. Said deposit shall constitute an opening bid at the appraised price.

**HARVEST METHOD:** Cable-54%/Ground 46%. Rubber tire skidders allowed only if skidding and rutting requirements can be met and a harvest plan is submitted and approved. 30' Equipment Limitations Zones on all typed waters. As indicated on the timber sale map, there will no falling and yarding from October 1 to April 15.

In Unit 5, Right of Way, falling and yarding is not permitted from one hour before official sunrise to two hours after official sunrise, and from one hour before official sunset to one hour after official sunset from April 1 through September 23. Falling and Yarding will not be permitted from October 1 to April 15 unless authorized in writing by the Contract Administrator.

**ROADS:** 657.35 stations of required prehaul maintenance. 318.30 stations of optional prehaul maintenance. Road work, right of way timber falling and yarding, rock pit operations or operation of heavy equipment is not permitted from one hour before official sunrise to



## TIMBER NOTICE OF SALE

two hours after official sunrise, and from one hour before official sunset to one to one hour after sunset from April 1 through September 23. Road construction will not be permitted from April 1 to September 15 unless authorized in writing by the Contract Administrator on the 34+75 Spur (stations 0+00 to 6+75).

C-1000 at stations 185.50 and 318+50, work below ordinary high water line is not permitted from October 1 through June 30.

### **ACREAGE DETERMINATION**

**CRUISE METHOD:** Sale area was 100% GPS'd. Sale units were cruised using a variable plot sample.

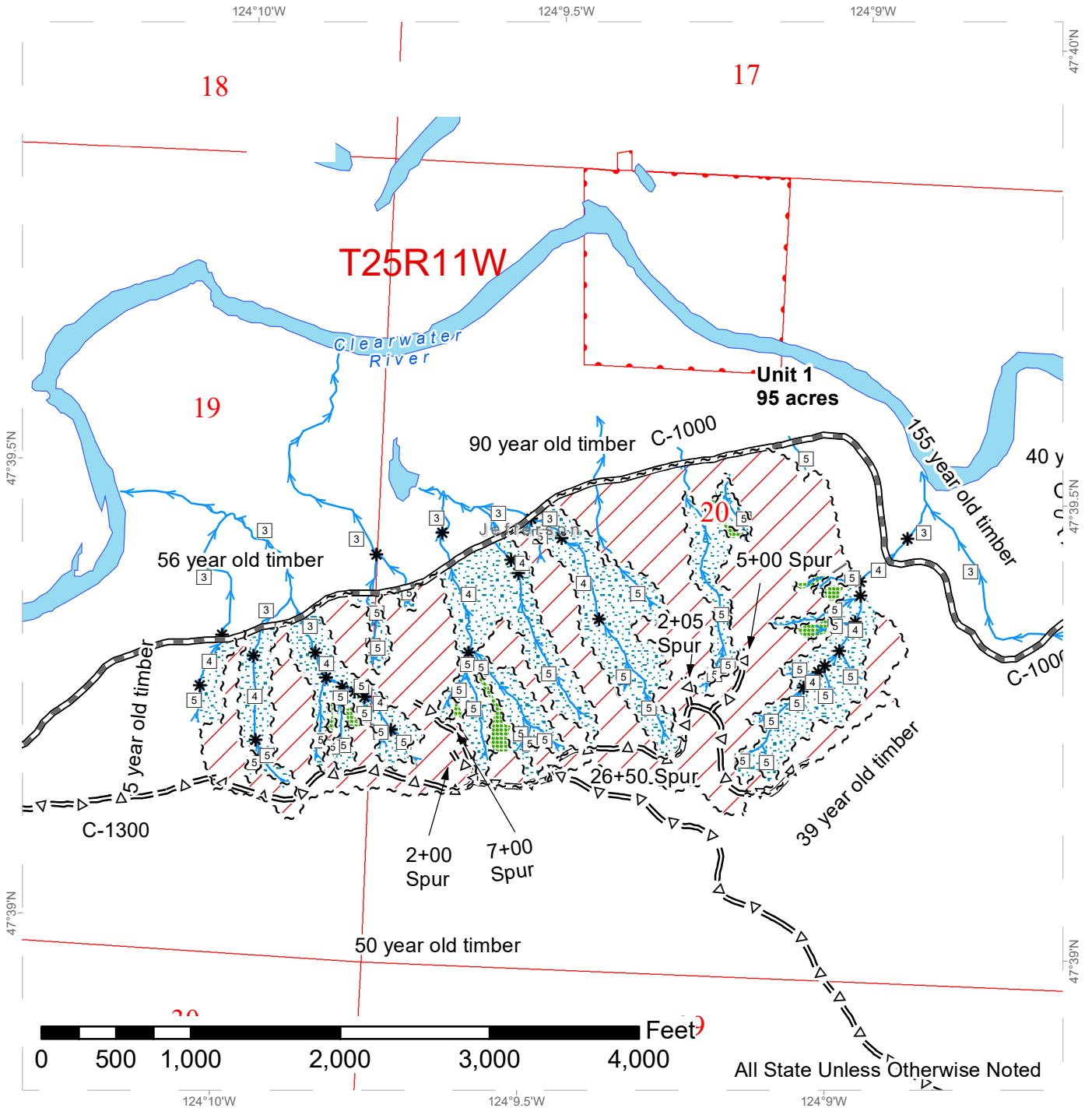
**FEES:** \$156,485.00 is due on day of sale. \$9.00 per MBF is due upon removal. These are in addition to the bid price.

**SPECIAL REMARKS:** Purchaser shall provide and construct bridge. See road plan for details.

# TIMBER SALE MAP

**SALE NAME:** CLEAR CHOICE  
**AGREEMENT #:** 30-097948  
**TOWNSHIP(S):** T25R11W  
**TRUST(S):** Common School and Indemnity (3)

**REGION:** Olympic Region  
**COUNTY(S):** Jefferson  
**ELEVATION RGE:** 387' - 1720'



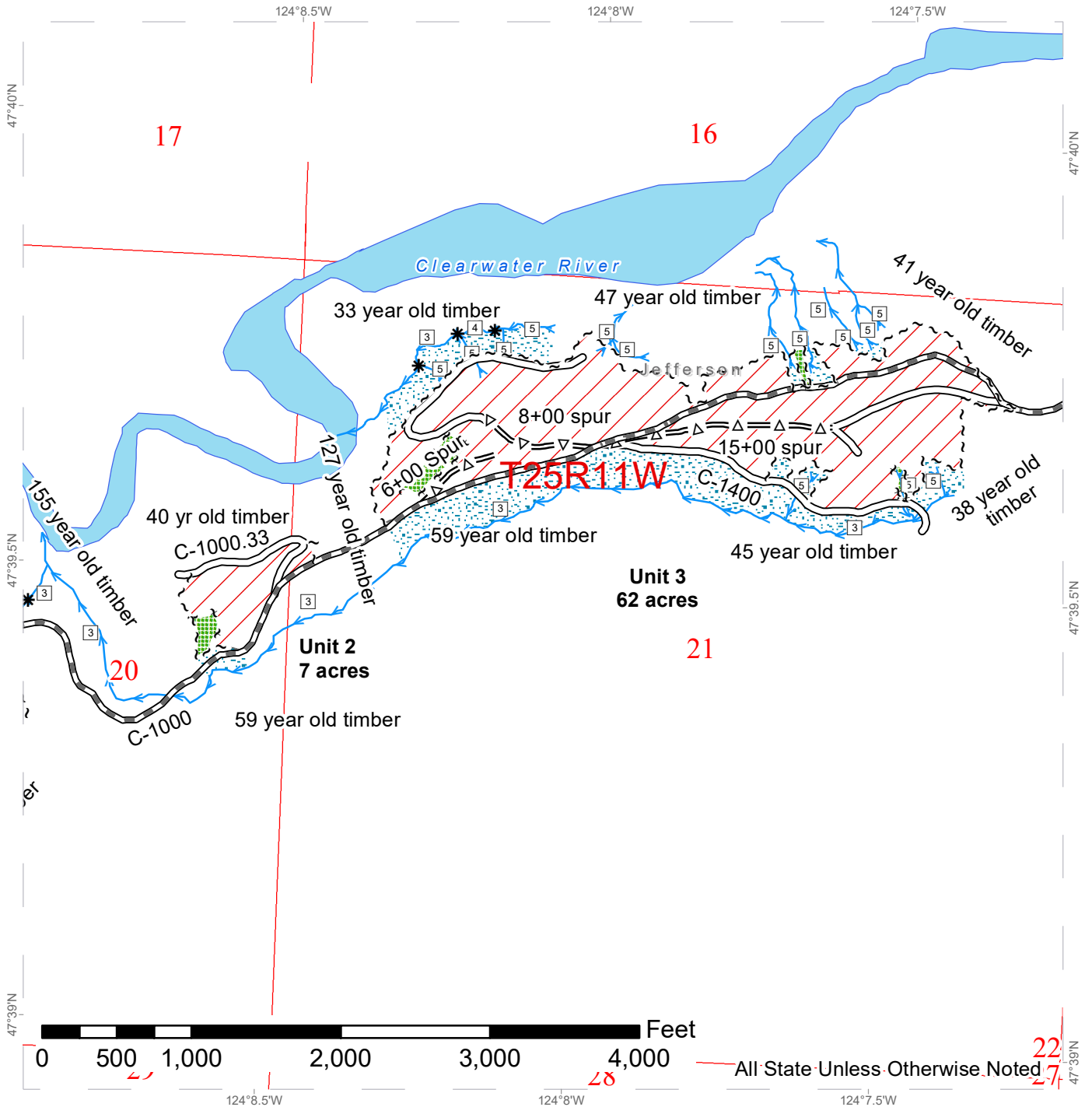
Legend			
	Streams		Sale Boundary Tags
	Stream Type		Leave Tree Tags
	Stream Type Break		Right of Way Tags
	Open Water		Marbled Murrelet Timing Restriction
	Existing Roads		Leave Tree Area
	Required Pre-Haul Maintenance		Riparian Mgt Zone
	Optional Pre-Haul Maintenance		Variable Retention Harvest
	Rockpit		County Boundary
	Public Land Survey Townships		Public Land Survey Sections
	DNR Managed Lands		



# TIMBER SALE MAP

**SALE NAME:** CLEAR CHOICE  
**AGREEMENT #:** 30-097948  
**TOWNSHIP(S):** T25R11W  
**TRUST(S):** Common School and Indemnity (3)

**REGION:** Olympic Region  
**COUNTY(S):** Jefferson  
**ELEVATION RGE:** 387' - 1720'



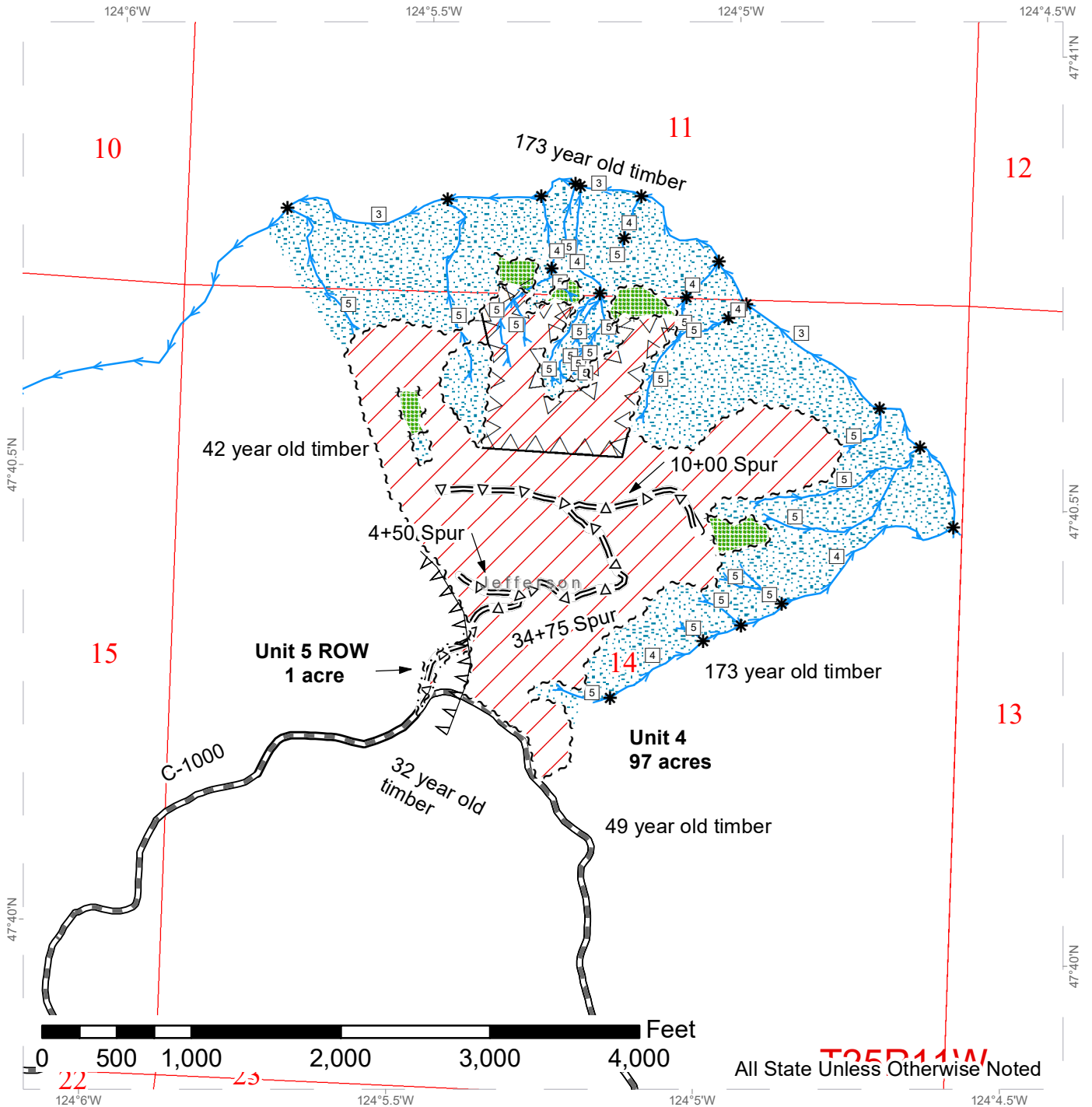
**Legend**

Streams	Sale Boundary Tags	Leave Tree Area	County Boundary
Stream Type	Leave Tree Tags	Riparian Mgt Zone	Public Land Survey Townships
Stream Type Break	Right of Way Tags	Variable Retention Harvest	Public Land Survey Sections
Open Water	Marbled Murrelet Timing Restriction		DNR Managed Lands
Existing Roads	Timber Type Change		
Required Pre-Haul Maintenance			
Optional Pre-Haul Maintenance			
Rockpit			

# TIMBER SALE MAP

**SALE NAME:** CLEAR CHOICE  
**AGREEMENT #:** 30-097948  
**TOWNSHIP(S):** T25R11W  
**TRUST(S):** Common School and Indemnity (3)

**REGION:** Olympic Region  
**COUNTY(S):** Jefferson  
**ELEVATION RGE:** 387' - 1720'



T25R11W  
All State Unless Otherwise Noted

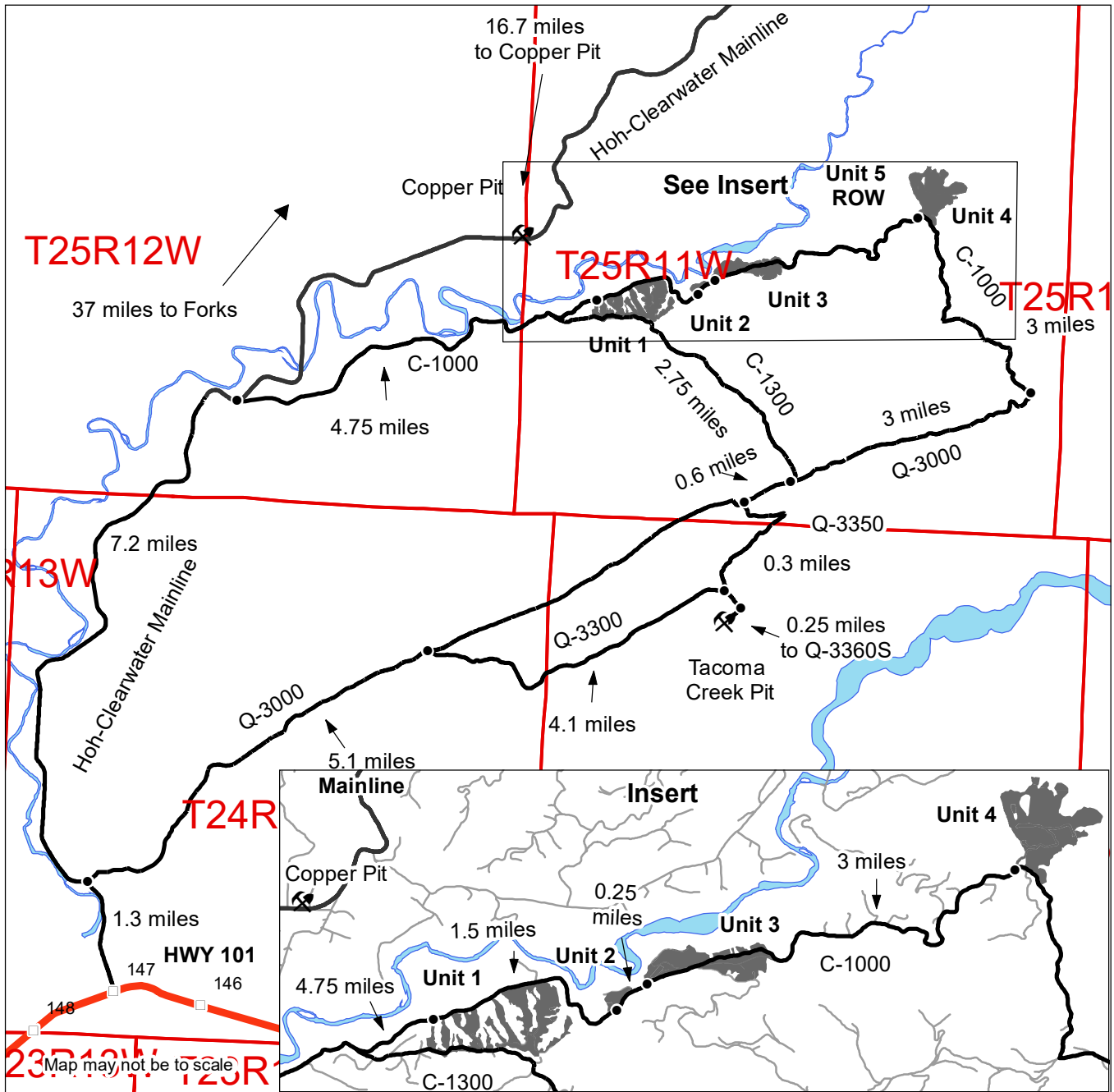
Legend			
	Streams		Sale Boundary Tags
	Stream Type		Leave Tree Area
	Stream Type Break		Riparian Mgt Zone
	Open Water		Variable Retention Harvest
	Existing Roads		Marbled Murrelet Timing Restriction
	Required Pre-Haul Maintenance		Leave Tree Tags
	Optional Pre-Haul Maintenance		Right of Way Tags
	Rockpit		County Boundary
	Timber Type Change		Public Land Survey Townships
			Public Land Survey Sections
			DNR Managed Lands



# DRIVING MAP

**SALE NAME:** CLEAR CHOICE  
**AGREEMENT#:** 30-097948  
**TOWNSHIP(S):** T25R11W  
**TRUST(S):** Common School and Indemnity (3)

**REGION:** Olympic Region  
**COUNTY(S):** Jefferson  
**ELEVATION RGE:** 387' -1720'



- Timber Sale Unit
- Haul Route
- Hoh-Clearwater Mainline
- Highway
- Milepost Markers
- Timber Sale Units
- Public Land Survey Townships
- Open Water
- Distance Indicator
- Rock Pit

### DRIVING DIRECTIONS:

From Forks travel 15 miles South to the Hoh-Clearwater mainline. Continue 22 miles South on the Hoh-Clearwater mainline and turn left onto the C-1000. Continue West on the C-1000 for 4.75 miles to Unit 1.  
 To access Unit 2 continue 1.5 miles past the beginning of Unit 1. Unit 2 begins on the North side of the C-1000. To access Unit 3 continue 0.25 miles past Unit 2. Unit 3 begins on the North side of the C-1000.  
 To access Unit 4 continue 3 miles past the beginning point of Unit 3. Unit 4 begins on the North side of the C-1000.  
 Copper Pit: From the North Entrance of the Hoh-Clearwater Mainline travel 16.7 miles to to the entrance of Copper Pit on the North side of the road.  
 Tacoma Creek Pit: From the South Entrance of the Hoh-Clearwater Mainline travel 1.3 miles North and turn right onto the Q-3000. Travel 5.1 miles and turn right on the Q-3300. Drive 4.1 miles and turn right on the Q-3360S. Drive 0.25 miles to pit.





TIMBER NOTICE OF SALE

SALE NAME: PILING

AGREEMENT NO: 30-097369

AUCTION: August 27, 2019 starting at 10:00 a.m., COUNTY: King South Puget Sound Region Office, Enumclaw, WA

SALE LOCATION: Sale located approximately 17 miles east of the town of Cumberland.

PRODUCTS SOLD AND SALE AREA:

All timber, except trees marked with a single band of blue paint or bounded out by yellow leave tree area tags, snags, and down timber existing more than 5 years from the day of sale, bounded by the following: white timber sale boundary tags, BPA powerline right of way marked with pink flagging, the 5470 and 5470-1 roads in Unit #1;

All timber bounded by orange right of way tags, except that title to timber within the right of way tags is not conveyed to the Purchaser unless the road segment is actually constructed in Unit #2;

All timber bounded by white timber sale boundary tags, timber type change marked with pink flagging, Load N Go Spur and the 5477 Road in Unit #3;

All forest products above located on part(s) of Sections 20 all in Township 21 North, Range 9 East, Sections 25 and 26 all in Township 21 North, Range 8 East, W.M., containing 95 acres, more or less.

CERTIFICATION: This sale is certified under the Sustainable Forestry Initiative® program Standard (cert no: PwC-SFIFM-513) and FSC 100% raw materials under the Forest Stewardship Council® Standard (cert no: BV-FM/COC-080501).

ESTIMATED SALE VOLUMES AND QUALITY:

Table with columns: Species, Avg DBH, Ring Count, Total MBF, and MBF by Grade (1P, 2P, 3P, SM, 1S, 2S, 3S, 4S, UT). Rows include Douglas fir, Red alder, Cottonwood, Silver fir, Hemlock, Maple, Red cedar, and Sale Total.

MINIMUM BID: \$1,035,000.00 BID METHOD: Sealed Bids

PERFORMANCE SECURITY: \$100,000.00 SALE TYPE: Lump Sum

EXPIRATION DATE: October 31, 2021 ALLOCATION: Export Restricted

BID DEPOSIT: \$103,500.00 or Bid Bond. Said deposit shall constitute an opening bid at the appraised price.



## TIMBER NOTICE OF SALE

**HARVEST METHOD:** Harvest activities are estimated to be 80 percent uphill cable, and 20 percent ground based harvest. Cable or ground based equipment, with cable-tethered equipment limited to sustained slopes 75 percent or less, self-leveling equipment limited to sustained slopes 65 percent and less, and all other ground based equipment limited to sustained slopes 45 percent or less. Yarding may be restricted during wet weather if rutting becomes excessive, per clause H-017.

**ROADS:** 15.60 stations of required construction. 20.50 stations of required reconstruction. 29.18 stations of optional construction. 14.37 stations of optional reconstruction. 670.70 stations of required prehaul maintenance. 29.18 stations of abandonment, if constructed with less rock than shown on the Rock List per Road Plan clause 11-1. Purchaser maintenance on the 54, 5470, 5470A, 5470-1, 5470-11, 5470-12, 5470-121, and 5477 roads and Load N Go Pit Spur. Designated maintenance on all other roads used.

Rock for this proposal can be obtained from the State owned Sta. 4+60 Pit, Sta. 15+60 Pit, Sta. 26+00 Pit, and/or Load N Go Pit at no cost to the Purchaser or any commercial rock source at the Purchaser's expense. If Purchaser elects to use the Load N Go Pit, rock pit development work is required per Road Plan clause 6-10. If Purchaser elects to use new rock sources at Sta. 4+60 Pit, Sta. 15+60 Pit and/or Sta. 26+00 Pit, rock pit development work is required per Road Plan clause 6-11.

Operation of road construction equipment and rock haul will not be permitted from November 1 to April 30, nor on weekends, or State recognized holidays, unless authority to do so is granted, in writing, by the Contract Administrator. If permission is granted to operate from November 1 to April 30, the Purchaser may be required to provide a maintenance plan per Road Plan clause 1-26.

### ACREAGE DETERMINATION

**CRUISE METHOD:** Acreage was determined by traversing boundaries by GPS. Traverse GPS data files are available upon request by emailing [audrey.mainwaring@dnr.wa.gov](mailto:audrey.mainwaring@dnr.wa.gov). See cruise narrative for cruise method.

**FEES:** \$77,962.00 is due on day of sale. \$9.00 per MBF is due upon removal. These are in addition to the bid price.

**SPECIAL REMARKS:** Purchaser shall cut all vine maple within the harvest unit(s), leaving a stump no more than 12 inches in height.

To access this timber sale you must go through the City of Tacoma's gate on the Headworks Road. All entrants must check in and out with the gate attendant at the Headworks Gate, show a copy of the timber sale prospectus, show valid driver's license and proof of vehicle insurance. The use of a CB is required while on the watershed mainline. A CB will be available for checkout at the gate house. A copy of the MOU between the State and City of Tacoma referenced in clause G-400 is available upon request from the South Puget Sound Region office.

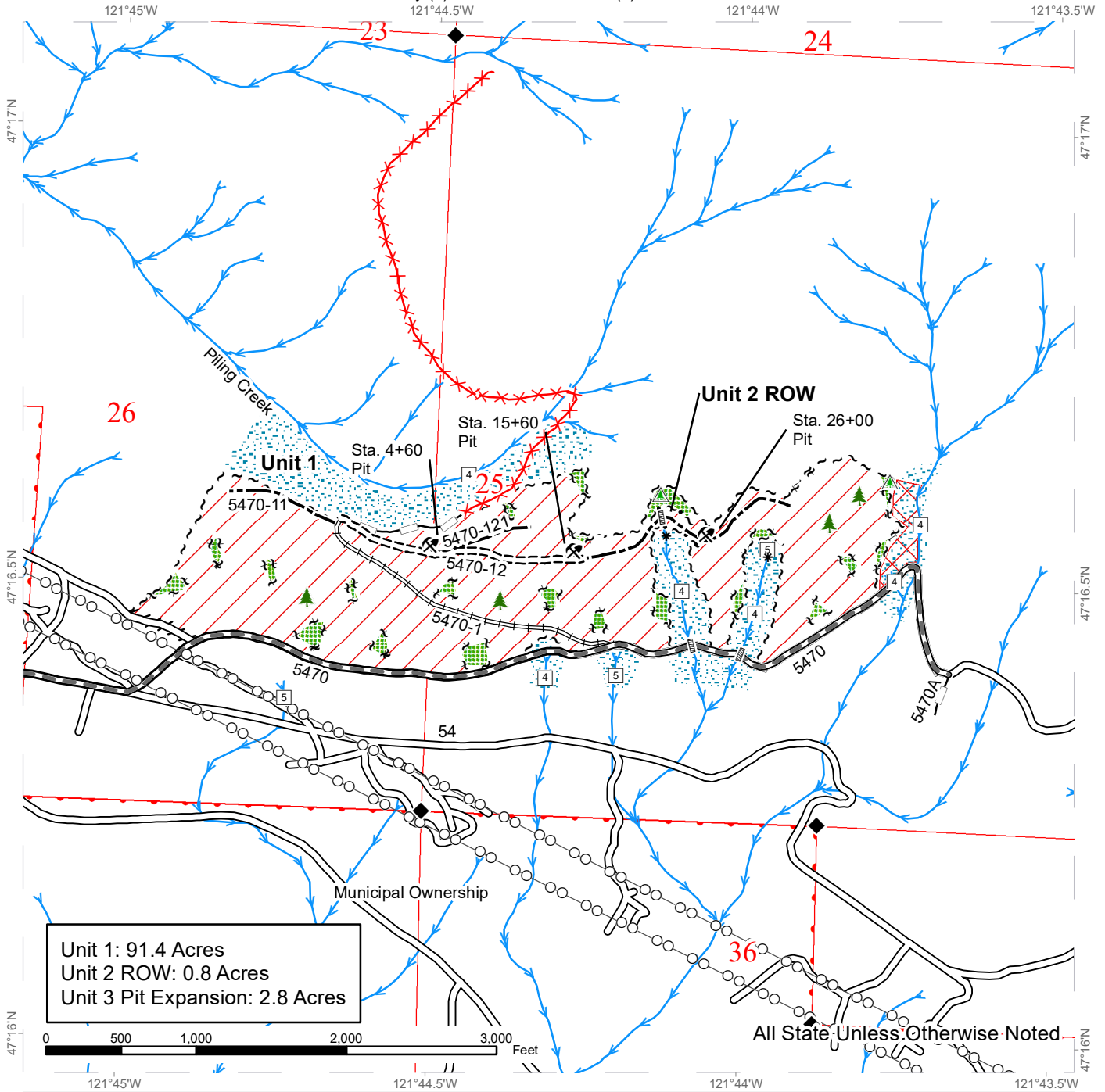
Heavy equipment is required to be cleaned prior to watershed entry to prevent the spread of noxious weeds. Contact City of Tacoma to be inspected upon entry at 253-502-8860 or 360-886-1601.



# TIMBER SALE MAP

**SALE NAME:** PILING  
**AGREEMENT #:** 30-097369  
**TOWNSHIP(S):** T21R8E  
**TRUST(S):** Common School and Indemnity (3), State Forest Transfer (1)

**REGION:** South Puget Sound Region  
**COUNTY(S):** King  
**ELEVATION RGE:** 1480-2240

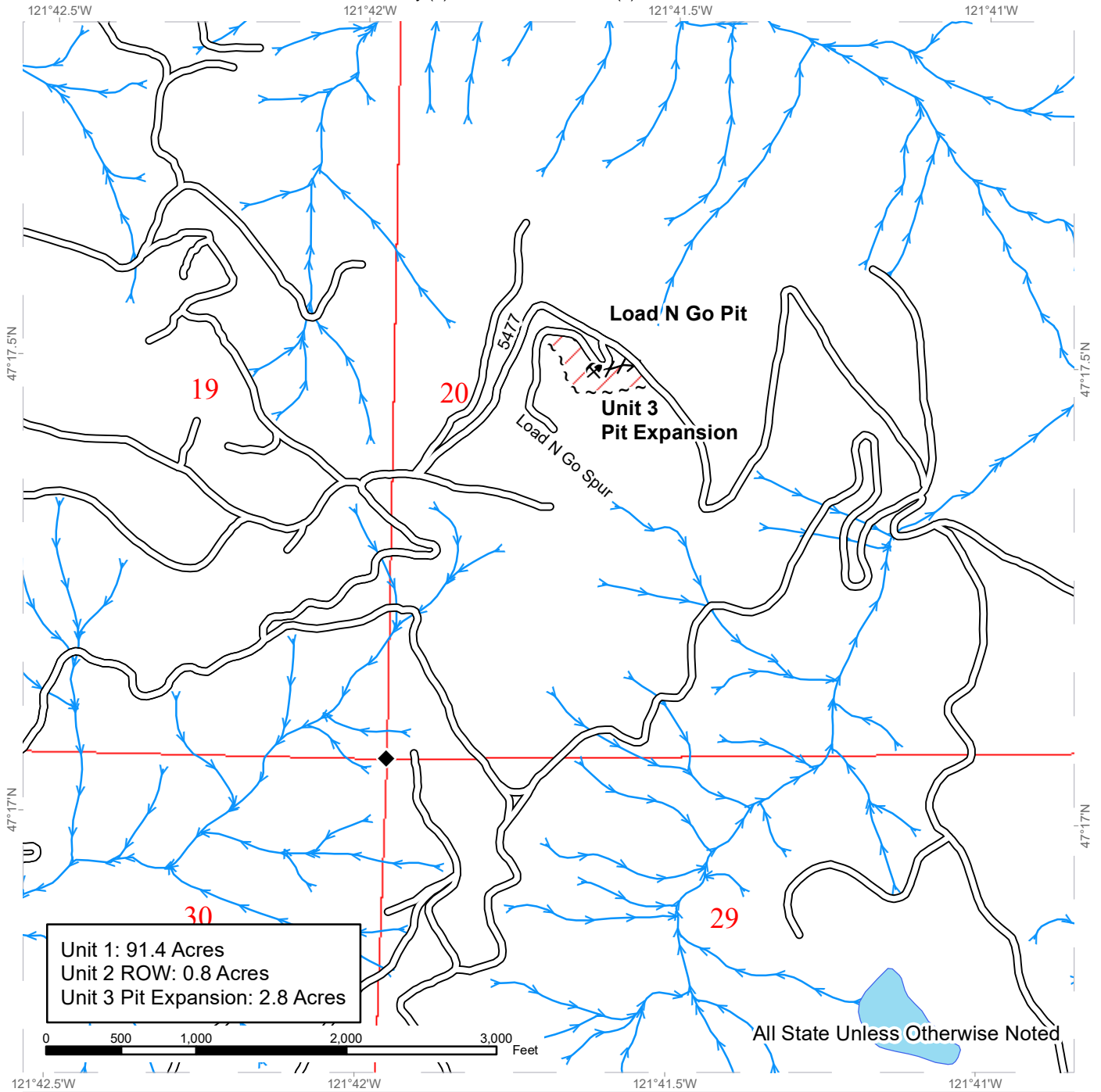


Culvert	Existing Roads	Sale Boundary Tags	Variable Retention Harvest
Leave Tree Area <1/4-acre	Required Pre-Haul Maintenance	Leave Tree Tags	DNR Managed Lands
Non-Tradeable Leave Trees	Required Construction	Right of Way Tags	Stream Type
Rock Pit	Required Reconstruction	Flag Line	Stream Type Break
Survey Monument	Optional Construction	Streams	Orphaned
Power Lines	Optional Reconstruction	Tailhold Restriction Area	Leave Tree Area
		Riparian Mgt Zone	

# TIMBER SALE MAP

**SALE NAME:** PILING  
**AGREEMENT #:** 30-097369  
**TOWNSHIP(S):** T21R9E  
**TRUST(S):** Common School and Indemnity (3), State Forest Transfer (1)

**REGION:** South Puget Sound Region  
**COUNTY(S):** King  
**ELEVATION RGE:** 1480-2240



Unit 1: 91.4 Acres  
 Unit 2 ROW: 0.8 Acres  
 Unit 3 Pit Expansion: 2.8 Acres

All State Unless Otherwise Noted

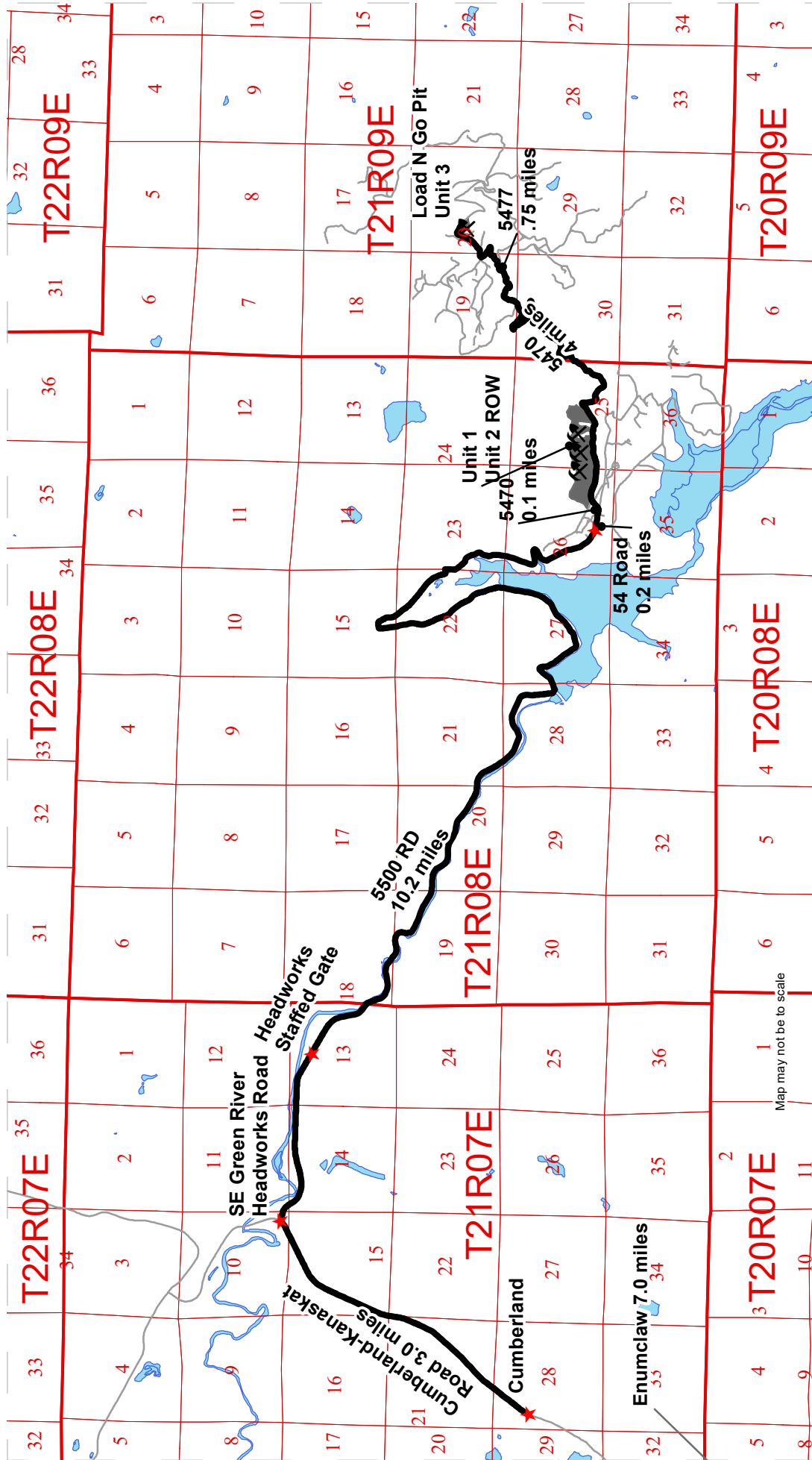
Rock Pit	Existing Roads	Sale Boundary Tags	Variable Retention Harvest
Survey Monument	Flag Line	Open Water	DNR Managed Lands
	Streams	Stream Type	Stream Type Break



**DRIVING MAP**

SALE NAME: PILING  
 AGREEMENT#: 30-097369  
 TOWNSHIP(S): T21R8E  
 TRUST(S): Common School and Indemnity (3), State Forest Transfer (1)

REGION: South Puget Sound Region  
 COUNTY(S): King  
 ELEVATION RGE: 1480-2240



**Rock Pit**

**Mile Delineator**

**Haul Route**

**Other Road**

**Timber Sale Unit**

**Public Land Survey Townships**

**Public Land Survey Sections**

**Open Water**

**DRIVING DIRECTIONS:**

From Cumberland go north approximately 3 miles then turn right on the South East Green River Head Works Road. After passing through the staffed Headworks gate continue on the 5500 road for 10.2 miles. Continue straight onto the 54 road and go approximately 1000 feet and turn left on the 5470 road. Continuing for 500 feet and crossing underneath the power lines the sale will be on the left side of the 5470 road. Continue past the sale for 4 miles and turn left on the 5477 road. Follow the 5477 for .75 miles and follow the middle fork of the 5477 to the Load N Go pit expansion unit, Unit 3.

Map may not be to scale





TIMBER NOTICE OF SALE

SALE NAME: CYGNUS

AGREEMENT NO: 30-97856

AUCTION: August 28, 2019 starting at 10:00 a.m., COUNTY: Skagit Northwest Region Office, Sedro Woolley, WA

SALE LOCATION: Sale located approximately 11 miles east of Sedro-Woolley, WA.

PRODUCTS SOLD AND SALE AREA: All timber bounded by white timber sale boundary tags, except cedar salvage (cedar snags, preexisting dead and down cedar trees and cedar logs), trees marked with blue paint on the bole and root collar and forest products tagged out by yellow leave tree area tags in Unit #1.

The above described products on part(s) of Sections 1 all in Township 36 North, Range 5 East, W.M., containing 24 acres, more or less.

CERTIFICATION: This sale is certified under the Sustainable Forestry Initiative® program Standard (cert no: PwC-SFIFM-513)

ESTIMATED SALE VOLUMES AND QUALITY:

Table with columns: Species, Avg DBH, Ring Count, Total MBF, and MBF by Grade (1P, 2P, 3P, SM, 1S, 2S, 3S, 4S, UT). Rows include Douglas fir, Red cedar, Hemlock, Maple, Cottonwood, Red alder, and Sale Total.

MINIMUM BID: \$648,000.00 BID METHOD: Sealed Bids

PERFORMANCE SECURITY: \$100,000.00 SALE TYPE: Lump Sum

EXPIRATION DATE: March 31, 2021 ALLOCATION: Export Restricted

BID DEPOSIT: \$64,800.00 or Bid Bond. Said deposit shall constitute an opening bid at the appraised price.

HARVEST METHOD: Cable or tethered equipment; cable, shovel, forwarder, tracked skidder or rubber-tired skidder (See H-141 for restrictions) on sustained slopes 45% or less. A self-leveling shovel and/or self-leveling harvester/feller-buncher (see H-141 for restrictions) may operate on sustained slopes up to 55%. Falling and Yarding will not be permitted from November 1 to March 31 unless authorized in writing by the Contract Administrator (THIS PERTAINS TO GROUND-BASED EQUIPMENT ONLY) to reduce soil damage and erosion.

ROADS: 120.01 stations of required prehaul maintenance. Rock may be obtained from the following source(s) on State land at no charge to the Purchaser: Virgo Pit at station 713+30 of the SK-ML Road. Quark Pit at station 61+77 of the SK-121 Road.



## TIMBER NOTICE OF SALE

---

Development of existing rock sources will involve processing rock to generate riprap and gravel pit run rock.

An estimated total quantity of rock needed for this proposal: 35 cubic yards of riprap and 3,930 cubic yards of gravel pit run rock.

Road work and the hauling of rock will not be permitted from November 1 to March 31 unless authorized in writing by the Contract Administrator to reduce soil damage and siltation. The hauling of forest products will not be permitted from November 1 to March 31 unless authorized in writing by the Contract Administrator to reduce soil damage and siltation.

### **ACREAGE DETERMINATION**

**CRUISE METHOD:** Acres determined by GPS traverse. Cruise was conducted via variable plot sample type. See Cruise Narrative for further details. Shapefiles of units are available upon request.

**FEES:** \$27,965.00 is due on day of sale. \$9.00 per MBF is due upon removal. These are in addition to the bid price.

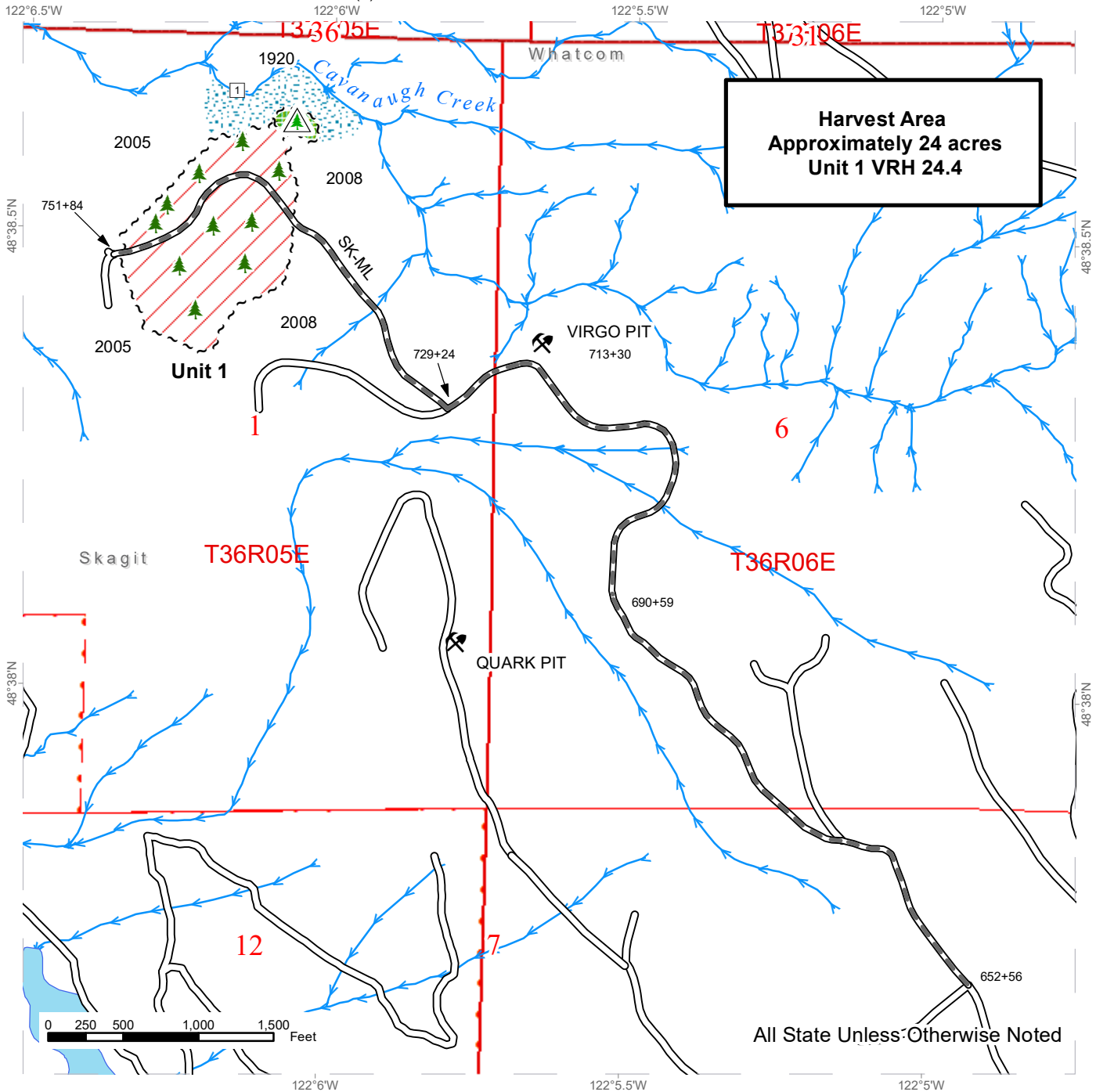
**SPECIAL REMARKS:**

1. HQ DF noted within the sale area. See cruise for further details (approximately 59 mbf of the above listed DF 2S is deemed high quality by the Department).
2. Douglas-fir and redcedar poles were noted within the sale area.

# TIMBER SALE MAP

**SALE NAME:** CYGNUS  
**AGREEMENT #:** 30-097856  
**TOWNSHIP(S):** T36R5E  
**TRUST(S):** State Forest Transfer (1)

**REGION:** Northwest Region  
**COUNTY(S):** Skagit  
**ELEVATION RGE:** 1000-1500



**Harvest Area**  
**Approximately 24 acres**  
**Unit 1 VRH 24.4**

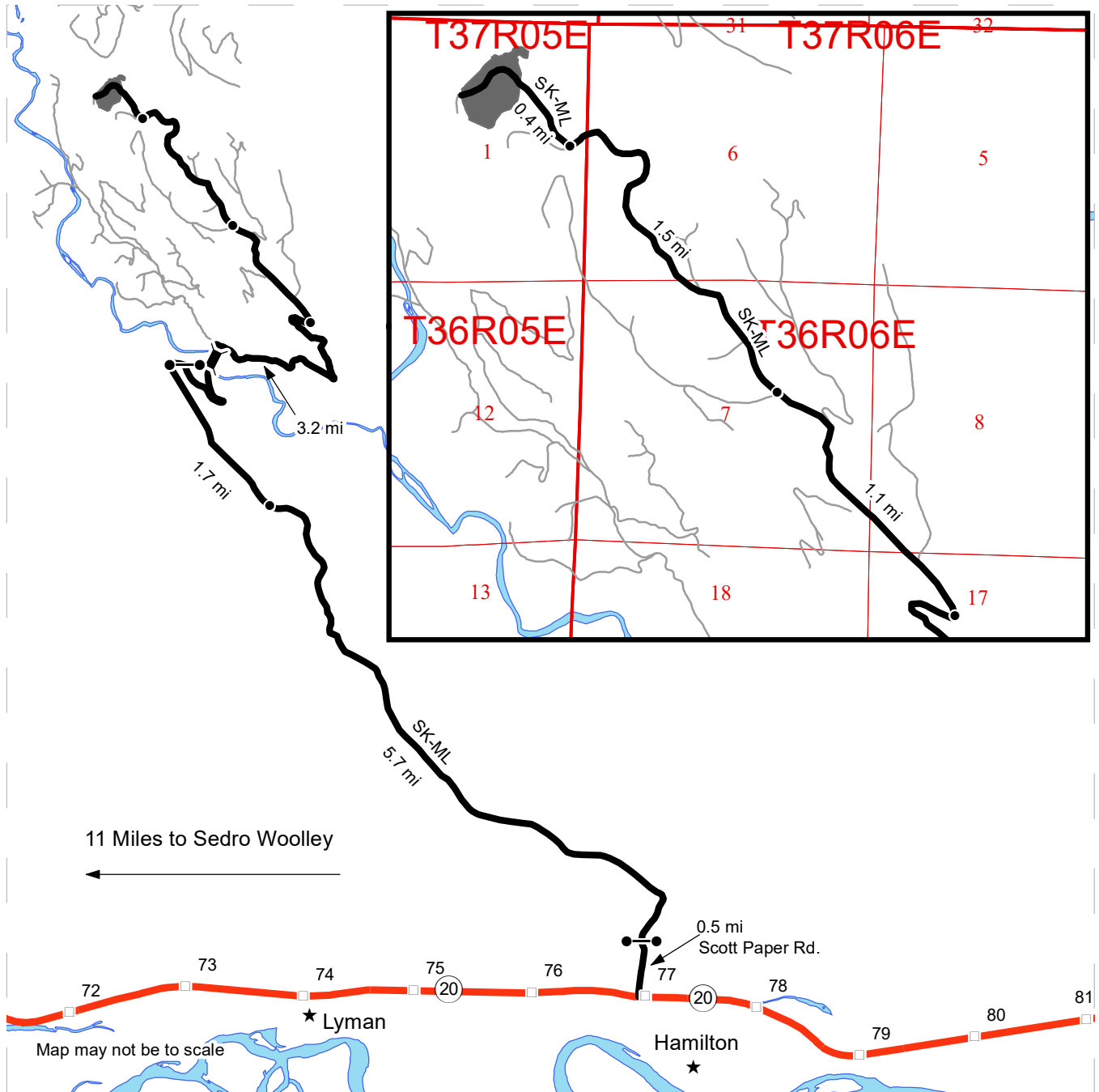
All State Unless Otherwise Noted

Variable Retention Harvest	Existing Roads	Stream Type
Leave Tree Area	Required Pre-Haul Maintenance	Stream Type Break
Riparian Mgt Zone	Streams	Leave Tree Area <1/4-acre
Sale Boundary Tags		Non-Tradeable Leave Trees
Leave Tree Tags		Rock Pit

# DRIVING MAP

**SALE NAME:** CYGNUS  
**AGREEMENT#:** 30-097856  
**TOWNSHIP(S):** T36R5E  
**TRUST(S):** State Forest Transfer (1)

**REGION:** Northwest Region  
**COUNTY(S):** Skagit  
**ELEVATION RGE:** 1000-1500



11 Miles to Sedro Woolley  
←

- Timber Sale Unit
- Milepost Markers
- Haul Route
- Other Road
- Bridge
- Distance Indicator
- Gate (<<Lock Type>>)
- Town

From the junction of Highway 20 and Highway 9, travel east on Highway 20 for 10.8 miles. At mile marker 77, turn left onto the Scott Paper road and travel 0.5 miles. There is a red gate with an F1-3 lock at the start of the SK-ML. Travel 5.7 miles along the SK-ML. Go left on the SK-ML (signed as 160) and continue for 1.7 miles to another red gate (F1-3 lock). Take the first right after the bridge to stay on the SK-ML for 3.2 miles. Stay left at the fork at the 5 mile marker and travel 1.1 miles to the SK-121 SK-ML junction. Stay straight at the junction and travel 1.5 miles on the SK-ML. Turn right to stay on the SK-ML and then travel 0.4 miles to unit 1.







TIMBER NOTICE OF SALE

SALE NAME: Q ELK VIEW SORTS

AGREEMENT NO: 30-98385 - 30-98388

AUCTION: August 29, 2019 starting at 10:00 a.m.

COUNTY: Yakima

Pacific Cascade Region Office, Castle Rock, WA

SALE LOCATION: Sale located approximately 12 miles northwest of Naches, WA

PRODUCTS SOLD AND SALE AREA:

all timber except leave trees as described in the Schedule A, bounded by white "Timber Sale Boundary" tags, pink flagging, and orange flashers, meeting the specifications described below; on parts of Sections 3, 10, 14, 15, 22, 23, 24, 26, and 27 all in Township 15 North, Range 15 East W.M., containing 740 acres, more or less.

MINIMUM BID AND ESTIMATED LOG VOLUMES:

Table with 10 columns: Agreement #, Sort #, Species and Sort Specifications, Average Log Length, Estimated Volume (Mbf, Tons), Tons Per MBF, Minimum Bid Delivered Prices (\$/mbf, \$/Ton), Total Appraised Value, Bid Deposit. Rows include agreements 98385 through 98388.

Totals: 2778 20486 \$1,345,370.00

CERTIFICATION: This sale is certified under the Sustainable Forestry Initiative® program Standard (cert no: PwC-SFIFM-513)

BID METHOD: Sealed Bids UNIT OF MEASURE: Tonnage Scale

EXPIRATION DATE: July 17, 2020 ALLOCATION: Export Restricted

PAYMENT SECURITY: To be determined by the State as described in Clause P-045.2 of the Purchaser's Contract.

BIDDING PROCEDURES: A separate sealed bid and envelope must be submitted for each log sort. Prospective Purchasers may bid on any or all log sorts. On the day of sale the Purchaser must bring their bid deposit up to 10% of their total bid price. Complete bidding procedures and auction information may be obtained from the Southeast Region Office in Ellensburg WA. Phone number (509)925-8510.

TIMBER EXCISE



## TIMBER NOTICE OF SALE

---

**TAX:** Purchaser must pay the forest excise taxes associated with the log sorts delivered to them. The tax rate for this sale is 4.2 %. Taxable Stumpage = Total Delivered Value – (Harvest Cost + Estimated Haul Cost + ARRF). For more information contact the Department of Revenue, Forest Tax Section at 1-800-548-8829.

Use the following rates for estimating taxable stumpage:

Harvest Cost = \$0.00 per Ton for sorts 1, 2 and 3 and \$25.00 per Ton for sort 4.

Hauling Services Payment Rate per Ton  
= (Base Rate + Mileage Rate) x (Contractor's hauling bid factor)

Base Rate = \$2.35 per ton

Mileage Rate =  $((\$0.16 \times C \text{ miles}) + (\$0.11 \times A \text{ miles})) \times \text{Fuel Index Factor}$

ARRF does not apply.

Note: To calculate ARRF rates per ton use the tons\mbf conversion factor in the table above.

**CONFIRMATION:** Each sort is subject to confirmation following auction. Sorts will not be confirmed until at least 10 days after auction. Final contract award is contingent upon the State's haul cost analysis. Actual haul route may vary and is subject to change at the State's discretion.

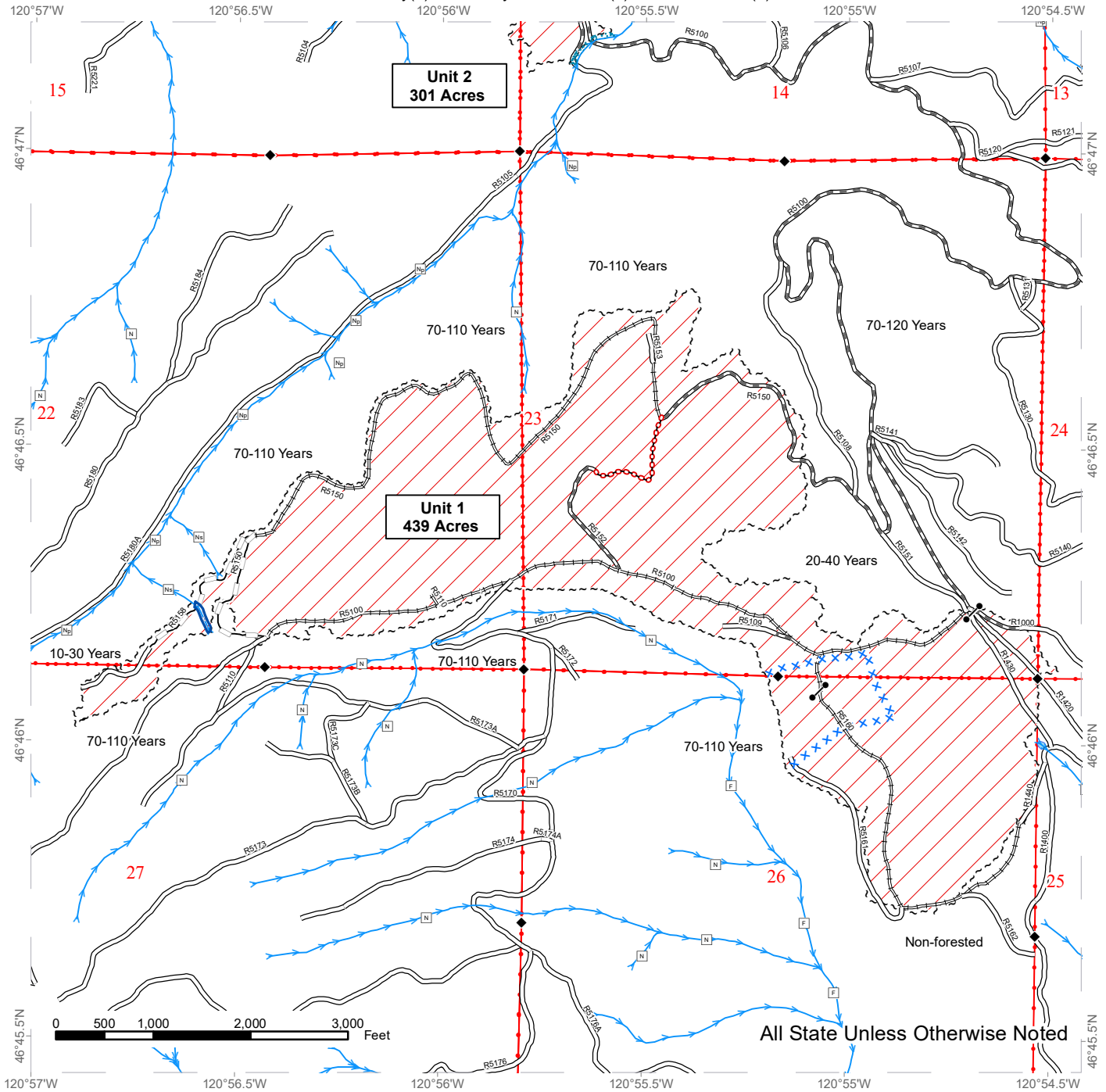
**SPECIAL REMARKS:** The successful Purchaser(s) will be required to purchase logs from the sale area upon delivery to their location specified in the bid submitted. Logs will be delivered to the Purchaser's delivery location by the State's contract harvester. Purchaser is responsible for weighing and scaling costs. All tonnage loads will be weighed and all mbf loads will be scaled at State approved locations. The State reserves the right to determine where logs are authorized to be scaled and weighed.

For more information regarding this log sort sale visit our web site: <http://www.dnr.wa.gov/programs-and-services/product-sales-and-leasing/timber-sales/timber-auction-packets>. If you have questions call Chris Brandon at the Southeast Region Office at (509)899-4825 or at the Product Sales and Leasing Division Office in Olympia at .

# TIMBER SALE MAP

**SALE NAME:** Q ELK VIEW SORTS  
**AGREEMENT #:** 30-098384  
**TOWNSHIP(S):** T15R15E  
**TRUST(S):** Common School and Indemnity(3), University - Transferred(5), Normal School (8)

**REGION:** Southeast Region  
**COUNTY(S):** YAKIMA  
**ELEVATION RGE:** 3840-4442

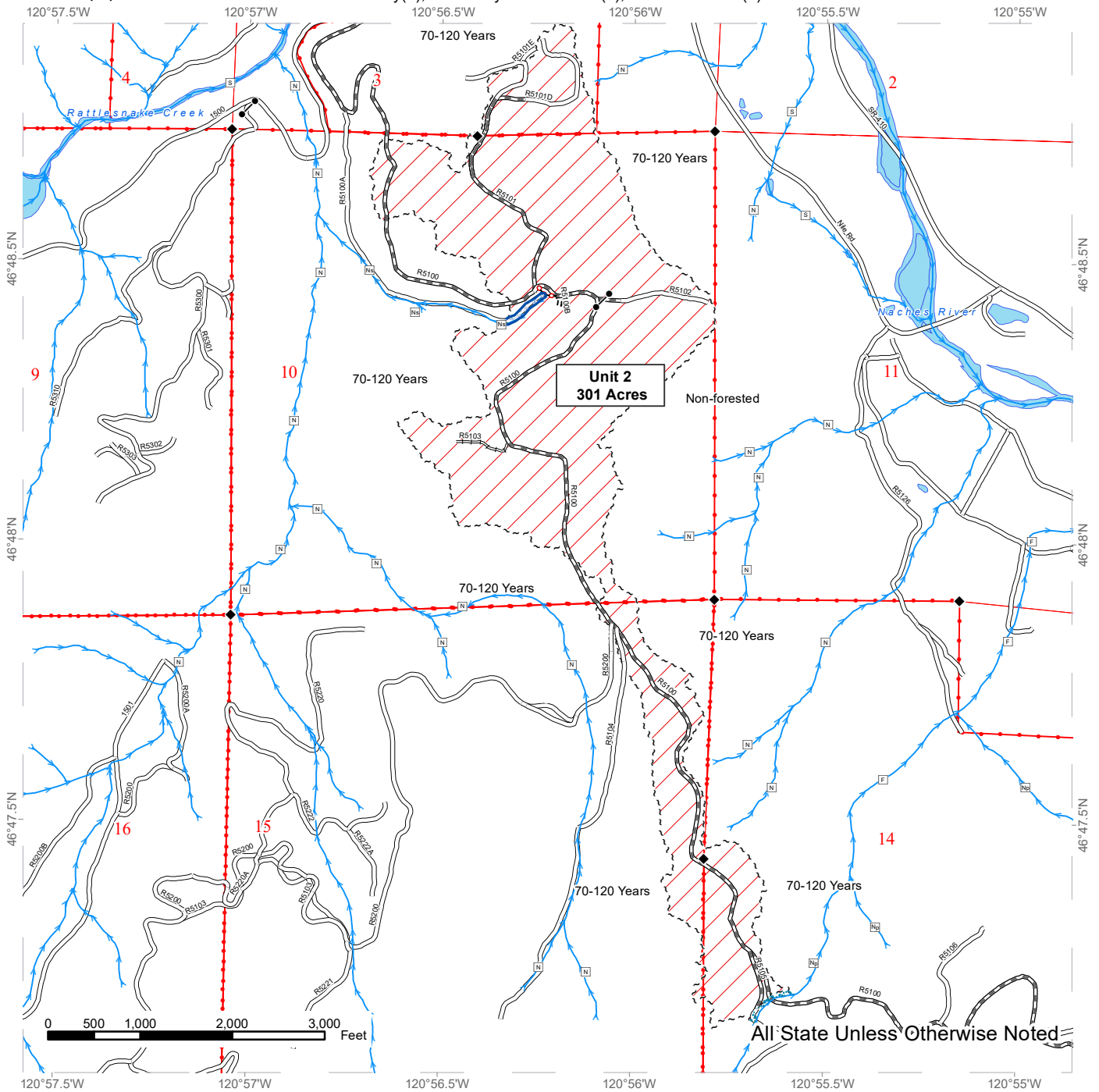


Sale Boundary Tags	Public Land Survey Section	Stream
Sale Area	New Construction	Open Water
Special Management Unit Tags	Pre-Haul Maintenance	Stream Type
Equipment Limitation Zone	Reconstruction	Survey Monument
RMZ	Optional Reconstruction	Gate
DNR Managed Lands	Required Abandonment	
Public Land Survey Township	Existing Roads	

# TIMBER SALE MAP

**SALE NAME:** Q ELK VIEW SORTS  
**AGREEMENT #:** 30-098384  
**TOWNSHIP(S):** T15R15E  
**TRUST(S):** Common School and Indemnity(3), University - Transferred(5), Normal School (8)

**REGION:** Southeast Region  
**COUNTY(S):** YAKIMA  
**ELEVATION RGE:** 3840-4442



All State Unless Otherwise Noted

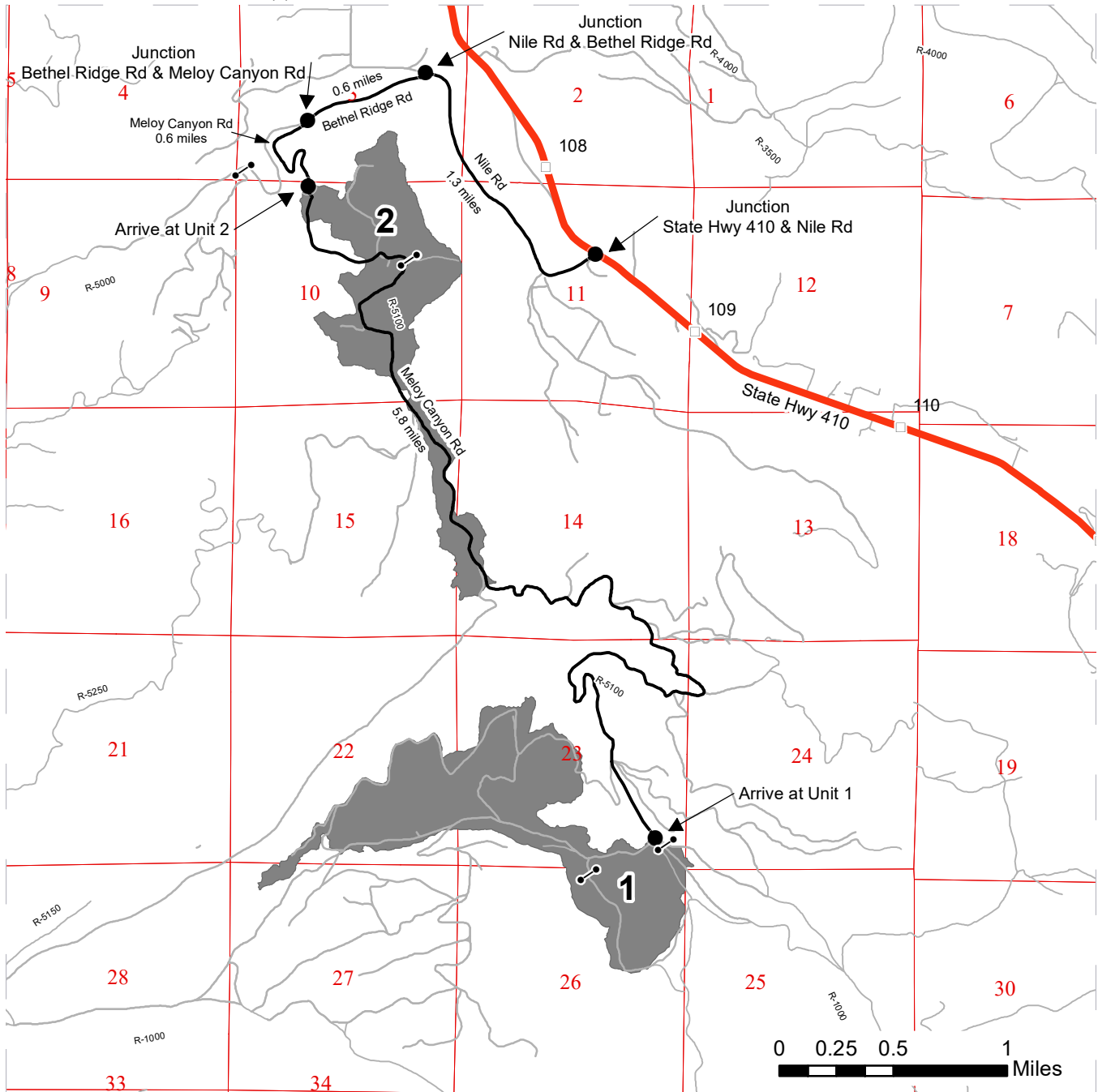
Sale Boundary Tags	Public Land Survey Section	Stream
Sale Area	New Construction	Open Water
Special Management Unit Tags	Pre-Haul Maintenance	Stream Type
Equipment Limitation Zone	Reconstruction	Survey Monument
RMZ	Optional Reconstruction	Gate
DNR Managed Lands	Required Abandonment	
Public Land Survey Township	Existing Roads	



# DRIVING MAP

**SALE NAME:** Q ELK VIEW SORTS  
**AGREEMENT#:** 30-098384  
**TOWNSHIP(S):** T15R15E  
**TRUST(S):** Common School and Indemnity(3), University - Transferred(5), Normal School(8)

**REGION:** Southeast Region  
**COUNTY(S):** YAKIMA  
**ELEVATION RGE:** 2280-4442



**Legend**

- Timber Sale Unit
- Access Route
- Other Road
- Highway
- Distance Indicator
- Milepost Markers
- Gate
- 1** Unit Number

**DRIVING DIRECTIONS:**  
 The sale area is approximately 12 miles northwest of Naches, WA.

Unit 2 - From the junction of State Hwy 410 and Nile Rd travel 1.3 miles on Nile Rd. Turn left onto Bethel Ridge Rd and continue 0.6 miles. Turn left onto Meloy Canyon Rd and travel 0.6 miles to arrive at Unit 2.

Unit 1 - From arrival point into Unit 2, continue on Meloy Canyon Rd 5.8 miles to arrive at Unit 1.





**State of Washington  
Department of Natural Resources**

**SEALED BID FORM**

Sale Name \_\_\_\_\_ Agreement Number \_\_\_\_\_

\_\_\_\_\_ hereby submits the following bid for timber.  
(Print full, legal company name)

\_\_\_\_\_  
(Street address, City, State, Zip Code)

\_\_\_\_\_  
(Phone Number)

---

---

**Lump Sum Bid** (Not Including Fees)      \$ \_\_\_\_\_ **For Total Sale**

**Weight Scale Sale Bid** (Not Including Fees)      \$ \_\_\_\_\_ / **Ton**

**Scribner Scale Sale Bid** (Not Including Fees)      \$ \_\_\_\_\_ / **MBF For Biddable Species**

---

---

**BID DEPOSIT**

**Bid Deposit Amount:** \$ \_\_\_\_\_

**Bid Deposit Type:**

- Cash, certified check, cashiers check, or money order  
 Per Sale Bid Bond  
 Statewide Bid Bond, Number \_\_\_\_\_

---

---

**Within 30 days of confirmation date** the successful bidder agrees to furnish Performance Security acceptable to the State in the amount specified on the Notice of Sale. Performance Security must guarantee performance of all provisions of the contract and payment of any damages caused by operations under the contract or resulting from the successful bidders noncompliance with any rule or law.

Bidder's Warranty and Bid Signature

*By signing and submitting this bid as an offer to purchase forest products from the State, the Bidder hereby warrants to the State that they have had an opportunity to fully inspect the sale area and the forest products being sold. Bidder further warrants to the State that they enter this bid based upon their own judgments of the value of the forest products, formed after their own examination and inspection of both the timber sale area and the forest products being sold. Bidder also warrants to the State that they enter this bid without any reliance upon the volume estimates, acreage, appraisals, pre-bid documentation, or any other representation by the Washington State Department of Natural Resources.*

\_\_\_\_\_ Date \_\_\_\_\_  
(Signature of Authorized Representative submitting this bid)

\_\_\_\_\_  
(Print name and title of Authorized Representative submitting this bid)

**Note: all sales are subject to confirmation by the Commissioner of Public Lands (Refer 79.15.120)**

## Instructions For Completing Sealed Bid Form

---

*All bids submitted for the purchase of forest products being sold by the Washington State Department of Natural Resources must have an original signature on behalf of the person or entity submitting the bid, and must be on the form provided in this booklet or a photocopy thereof. The DNR will not accept bids that are not signed, and will not accept bids that are not on the current, approved bid form. All appropriate blanks on bid form must be completed including the bid bond number if the bidder is relying upon a bid bond for bid deposit.*

*For more specific information, contact the appropriate region office.*

---

### In-Person Bids

- A. Sealed bids must be in auction box before 10:00 a.m. on the day of auction at the location specified in the Timber Notice of Sale.
  - B. Sealed bids must be submitted in an envelope with the name of the sale, the bidder's name and the contract number clearly written on the outside of the envelope. The full legal name and business address of the bidder must be inserted where indicated on the form, and must be on the bid bond and timber sale contract. The bid form must be signed by an authorized representative. When a bidder has more than one person authorized to bid, documentation of those persons with signature authority for bidding must accompany the bid or be on file at the region office. Sealed bid envelopes are available at all region offices. One bid per envelope.
  - C. Sealed bid envelopes **must** contain a completed bid form and a bid deposit.
  - D. Sealed bid envelopes **may** contain a check for the Initial Deposit amount and a check for fees.
- 

### Mailed Bids

- A. Bids that are mailed are required to have printed on the outside: "DO NOT OPEN UNTIL SALE DATE. SEALED BID ENCLOSED". The sealed bid envelope(s) will be enclosed inside the mailed-in envelope. Mailed bids must be submitted in an envelope with the name of the sale, the bidder's name and the agreement number clearly written on the outside of the envelope. The full legal name and business address of the bidder must be inserted where indicated on the form, and must be the same on the bid bond and timber sale contract. The Sealed Bid Form must be signed by an authorized representative. When a bidder has more than one person authorized to bid, documentation of those persons with signature authority for bidding must accompany the bid or be on file at the region office. Mail-in envelopes are available at all region offices. One bid per mailed-in envelope.
  - B. Bids that are mailed will be accepted up to 4:30 p.m. the last business day before the auction by the region office in which the sale is located. Bidders assume the risk for the method of delivery. The DNR assumes no responsibility for any delays caused by any delivery service.
  - C. Sealed bid envelopes **must** contain a completed bid form and a bid deposit.
  - D. Sealed bid envelopes **may** contain a check for the Initial Deposit amount and a check for fees.
- 

### Initial Deposit:

**Lump Sum Sales** - Initial Deposit must equal 10% of the total bid submitted.  
(25% if the bidder is a defaulter as defined under WAC 332-140-300)

**Weight Scale Sales** - Initial Deposit must equal 10% of the bid per ton multiplied by the total sale estimated tonnage. (25% if the bidder is a defaulter as defined under WAC 332-140-300)

**Scribner MBF Scale Sales** - Initial Deposit must equal 10% of the bid per MBF multiplied by the total sale MBF. (25% if the bidder is a defaulter as defined under WAC 332-140-300)



**State of Washington**  
**Department of Natural resources**

**STATEWIDE BID BOND**

Bond Number \_\_\_\_\_

\_\_\_\_\_ of \_\_\_\_\_,  
(Principal's Name) (City, State)

hereinafter called PRINCIPAL, and \_\_\_\_\_ hereinafter called  
SURETY,

a corporation organized under the laws of the State of \_\_\_\_\_, and authorized to transact surety business in the State of Washington, as SURETY, are held and firmly bound jointly and severally to the State of Washington, Department of Natural Resources, hereinafter called the STATE, in the sum of \$150,000.00 Dollars, lawful money of the United States of America. The PRINCIPAL binds itself, its heirs, executors, administrators, successors, and assigns, and the SURETY binds itself, its successors, and assigns, all jointly and severally.

This bond shall be governed by the laws of the State of Washington. In the event of a lawsuit involving this bond, a venue shall be proper only in Thurston County Superior Court.

Signed, sealed and dated this \_\_\_\_\_ day of \_\_\_\_\_, \_\_\_\_\_ .  
(month) (year)

This statewide bid bond may be used for bidding between the following dates:

Starting:

Ending:

**It Is Hereby Understood and Agreed:**

If PRINCIPAL is an apparent high bidder, PRINCIPAL shall before 4:30 p.m ., on day of sale, pay to the STATE the amount of the initial deposit in the form of a certified check, cashier's check, bank draft, cash or money order, then this agreement shall be void for the sale on which the payment is made; otherwise, it will remain in force.

SURETY will make payment to the STATE within ten days after demand by the STATE if the PRINCIPAL shall fail to make timely payment as described above.

The SURETY may cancel this bond by sending a written notice to the STATE, not less than forty-five days before a cancellation date; liability shall terminate as to acts or omissions of the PRINCIPAL that occur after the cancellation date.

The PRINCIPAL and the SURETY executed this bond on the date first mentioned.

**Principal:** (Above named)

Signature: \_\_\_\_\_

Name: \_\_\_\_\_

Title: \_\_\_\_\_

Address: \_\_\_\_\_

City: \_\_\_\_\_  
State & Zip Code

**Surety:** (Above named)

Signature: \_\_\_\_\_

Name: \_\_\_\_\_

Title: \_\_\_\_\_

Address: \_\_\_\_\_

City: \_\_\_\_\_  
State & Zip Code

**Surety:** (Local Office of Authorized agent)

Signature: \_\_\_\_\_

Name: \_\_\_\_\_

Title: \_\_\_\_\_

Address: \_\_\_\_\_

City: \_\_\_\_\_  
State & Zip Code

Notary or Company Seal in Space Above

## Instructions for Completing Timber Sale Statewide Bid Bond

- A. This form is authorized for use as bid guaranty to qualify for bidding on Washington State Department of Natural Resources timber sales.
- B. The Statewide Bid Bond may be used as bid guaranty on more than one timber sale.
- C. The full legal name and business address of the PRINCIPAL must be inserted where indicated and must be the same as will appear on the bidding record and timber sale contract. The bond must be signed by an authorized person. Additionally, the name must be typed or printed below the signature and title must be shown.
- D. The full legal name and business address of the SURETY must be inserted where indicated. The bond must be signed by an authorized person. Additionally, the name must be typed or printed below the signature and the title must be shown.
- E. If the SURETY does not have a Washington State office or resident agent, but is authorized to transact surety business in the State of Washington as SURETY, it may leave this signature block blank.
- F. This form must be received by the Department of Natural Resources, Product Sales & Leasing Division, PO BOX 47016, Olympia, Washington, 98504-7016, ten days in advance of the auction.
- G. **The State reserves the right to reject *incomplete or incorrect* bid bond forms, making such forms unacceptable as bid guaranty.**



**State of Washington  
Department of Natural Resources**

**Timber Sale Per Sale Bid Bond**

Bond Number \_\_\_\_\_

\_\_\_\_\_ of \_\_\_\_\_, hereinafter called PRINCIPAL, and \_\_\_\_\_, hereinafter called SURETY, a corporation organized under the laws of the State of \_\_\_\_\_ and authorized to transact surety business in the State of Washington, as SURETY, are held and firmly bound jointly and severally to the State of Washington, Department of Natural Resources, hereinafter called the STATE, in the sum of \$ \_\_\_\_\_ Dollars, lawful money of the United States of America. The PRINCIPAL binds itself, its heirs, executors, administrators, successors, and assigns, and the SURETY binds itself, its successors, and assigns, all jointly and severally.

This bond shall be governed by the laws of the State of Washington. In the event of a lawsuit involving this bond, venue shall be proper only in Thurston County Superior Court.

Signed, sealed, and dated this \_\_\_\_\_ day of \_\_\_\_\_, 20 \_\_\_\_\_.

**BID IDENTIFICATION:**

SALES NAME(S)	REQUIRED DEPOSIT	AGREEMENT NUMBER(S)

**DATE OF BID:** \_\_\_\_\_

**It Is Hereby Understood and Agreed:**

*If* PRINCIPAL is the high bidder on the sale(s) identified above and, within ten (10) days of the day of sale, transmits cash, certified check, cashier's check, bank draft or money order, payable to the STATE, in the amount of the bid guaranty required by the terms of the Notice of Sale, *then* this obligation shall be void; *otherwise*, it shall remain in force.

SURETY will make payment to the STATE within ten (10) days after demand by the STATE whenever the PRINCIPAL shall fail to make timely payment as described above.

IN WITNESS WHEREOF: the PRINCIPAL and the SURETY have caused this bond to be executed on the date first mentioned.

**SECOND OFFICER:**

Signature: \_\_\_\_\_

Name: \_\_\_\_\_

Title: \_\_\_\_\_

**PRINCIPAL:** (Above Named)

Signature: \_\_\_\_\_

Name: \_\_\_\_\_

Title: \_\_\_\_\_

**SURETY:** (Local Office of Authorized Agent)

Signature: \_\_\_\_\_

Name: \_\_\_\_\_

Title: \_\_\_\_\_

Address: \_\_\_\_\_

City: \_\_\_\_\_

State & Zip: \_\_\_\_\_

**SURETY:** (Above Named)

Signature: \_\_\_\_\_

Name: \_\_\_\_\_

Title: \_\_\_\_\_

Address: \_\_\_\_\_

City: \_\_\_\_\_

State & Zip \_\_\_\_\_

**NOTARY OR COMPANY SEAL IN THE SPACE ABOVE**

## **Instructions for Completing Timber Sale Per Sale(s) Bid Bond**

- A. This form is authorized for use as bid guaranty to qualify for bidding on Washington State Department of Natural Resources timber sales.
- B. The Timber Sale Per Sale Bid Bond may be used as bid guaranty on more than one timber sale auction held the same date at the same location.
- C. The full legal name and business address of the PRINCIPAL must be the same as will appear on the bidding record and timber sale contract. The bond must be signed by an authorized person, the name typed or printed, and title shown. If PRINCIPAL is a corporation, a second officer must sign in the space to the left of the signature of the officer executing for the PRINCIPAL.
- D. The full legal name and business address of the SURETY must be inserted where indicated. The bond must be signed by an authorized person. Additionally, the name must be typed or printed below the signature and the title must be shown. If this person is not an officer of the corporation, evidence of authority must be submitted.
- E. If the SURETY does not have a Washington State office or resident agent, but is authorized to transact surety business in the State of Washington as Surety, it may leave the local office signature block blank.
- F. The date of the bid bond must not be later than the auction date.
- G. **The State reserves the right to reject incomplete or *incorrect* bid bond forms, making such forms unacceptable as guaranty.**





STATE OF WASHINGTON  
DEPARTMENT OF NATURAL RESOURCES  
**LOG SORT SEALED BID FORM**

Sale Name \_\_\_\_\_ Agreement Number \_\_\_\_\_ Date \_\_\_\_\_

\_\_\_\_\_ hereby submits the following bid for delivered logs.  
(Print Company Name)

\_\_\_\_\_ Telephone Number \_\_\_\_\_  
(Print Name Authorized Company Representative) (Contact for bid result notification)

\_\_\_\_\_  
(Street Address)

\_\_\_\_\_  
(City, State and Zip)

Agreement Number	Sort Number	<b><u>Delivered</u> Logs Bid Amount</b> (fill in one only)	
		\$ /MBF	\$ /TON

**Bid Deposit Amount** \$ \_\_\_\_\_

- Bid Deposit Type:**
- Cash, Certified Check, Cashiers Check, or Money Order
  - Per Sale Bid Bond
  - Statewide Bid Bond, Number \_\_\_\_\_

The successful bidder agrees to furnish payment security acceptable to the State in the amount as described in clause P-041 of the Purchaser’s contract prior to log delivery and at a date to be determined by the State.

**Bidder’s Warranty and Bid Signature**

*By signing and submitting this bid as offer to purchase forest products from the State, the Bidder hereby warrants to the State that they have had an opportunity to fully inspect the sale area and the forest products being sold. Bidder further warrants to the State that they enter this bid based solely upon their own judgment of the value of the forest products, formed after their own examination and inspection of both the timber sale area and the forest products being sold. Bidder also warrants to the State that they enter this bid without any reliance upon the volume estimates, acreage estimates, appraisals, pre-bid documentation, or any other representation by the State Department of Natural Resources.*

\_\_\_\_\_  
(Signature of Authorized Representative submitting this bid)

\_\_\_\_\_  
(Date of Signature)

\_\_\_\_\_  
(Print name and title of Authorized Representative submitting this bid)

**NOTES:** A separate bid form is required for each log sort bid and must be delivered in a separate envelope. Photocopies of this bid form may be used. Each photocopy must have original signatures. Final contract award is contingent upon the State’s haul cost analysis. Actual haul route may vary and is subject to change at the State’s discretion. All sales are subject to confirmation by the Commissioner of Public Lands as per RCW 79.15.100.

**LOG SORT SEALED BID SUPPLEMENTAL INFORMATION FORM**\_\_\_\_\_  
(Print Company Name)\_\_\_\_\_  
(Sale Name)\_\_\_\_\_  
(Agreement Number)\_\_\_\_\_  
(Sort Number)\_\_\_\_\_  
(email: optional for DNR production report distribution)**Log Manufacturing Specifications:****Sawlog and Peeler sorts:** Enter at least one preferred log length including trim for each log length range below.**Pole sorts (Distribution):** Enter three or more lengths. Attach preferred manufacturing information.**Pole sorts (Transmission):** Enter six or more lengths. Attach preferred manufacturing information.**Tonnage sorts:** See bid form instructions for required log lengths. Enter additional custom lengths as desired.

<b>Log Length Ranges</b>	<b>Bidder's Preferred Log Lengths</b>
<b>16 ft. through 20 ft.</b>	
<b>22 ft. through 30 ft.</b>	
<b>32 ft. through 40 ft.</b>	
<b>Distribution Poles – 35 ft. through 55 ft.</b>	
<b>Transmission Poles – 60 ft.+</b>	

**Log Delivery Information:****1) Designate the point of delivery and address (must be a street address)**\_\_\_\_\_  
(Location Name)\_\_\_\_\_  
(Street Address)\_\_\_\_\_  
(City, State and Zip)**2) Designate the state approved Scaling and Weighing facilities closest to the point of delivery as needed.****Scaling Location Information****Weighing Location Information**\_\_\_\_\_  
(Scaling Location Name)\_\_\_\_\_  
(Weighing Location Name)\_\_\_\_\_  
(Third Party Scaling Organization)\_\_\_\_\_  
(Weighing Location Owner)\_\_\_\_\_  
(Scaling Location Street Address)\_\_\_\_\_  
(Weighing Location Street Address)\_\_\_\_\_  
(Scaling Location City, State and Zip)\_\_\_\_\_  
(Weighing Location City, State and Zip)

**Final contract award is contingent upon the State's haul cost analysis. Actual haul route may vary and is subject to change at the State's discretion. Additional terms or conditions requested by the bidder on or attached to the Log Sort Sealed Bid or Supplemental Information Forms are informational only and non-binding.**

## **Instructions for Completing the Log Sort Sealed Bid and Supplemental Information Forms.**

All bids submitted for the purchase of forest products being sold by the Washington State Department of Natural Resources must have an original signature on behalf of the person or entity submitting the bid, and must be on the form(s) provided in this booklet or a photocopy thereof. The DNR will not accept bids that are not signed, and will not accept bids that are not on the current, approved bid form. All appropriate blanks including Agreement Number, Sort Number, Bid amount (per mbf or ton as appropriate for the sort), Bid deposit amount and type. Signatures and date on bid form must be completed including the bid bond number if bidder is relying upon a bid bond for bid deposit.

Bids shall not be accepted if a completed '**Log Sort Sealed Bid Supplemental Information Form**' is not included with the approved '**Log Sort Sealed Bid Form**'.

**Required log lengths for tonnage sorts:** Preferred log lengths for tonnage sawlog sorts shall include the following plus any additional lengths identified on the Bid Supplemental Information form:

<b>Species Type</b>	<b>Preferred Lengths</b>
Conifer Sorts	16', 20', 24', 26', 32', 40'
Hardwood Sorts	18', 20', 26', 28', 30', 36', 38', 40'

For more specific information, contact the appropriate region office.

### **In-Person Bids**

- A. Sealed bids must be in auction box or auction envelope before 10:00 a.m. on the day of sale at the location specified in the notice of sale.
- B. Sealed bids must be submitted in an envelope with the name of the sale, the bidder's name and the contract agreement number clearly written on the outside of the envelope. The full legal name and business address of the bidder must be inserted where indicated on the form, and must be the same as the name on the bid bond and timber sale contract. The bid form must be signed by an authorized person. When a bidder has more than one person authorized to bid, then documentation of those persons with signature authority for bidding must accompany the bid or be on file at the region office. Sealed bid envelopes are available at all region offices. One bid per envelope.
- C. Sealed bid envelopes must contain the following:
  1. A completed '**Log Sort Sealed Bid Form**';
  2. A completed '**Supplemental Information Form**' and;
  3. A bid deposit

### **Mailed Bids**

- A. Mail-in bid envelopes are required to have printed on the outside: "DO NOT OPEN UNTIL SALE DATE. SEALED BID ENCLOSED." The sealed bid envelope(s) will be enclosed inside the mailed-in envelope. Mailed bids must be submitted in an envelope with the name of the sale, the bidder's name and the agreement number clearly written on the outside of the envelope. The full legal name and business address of the bidder must be inserted where indicated on the form, and must be the same on the bid bond and timber sale contract. The bid form must be signed by an authorized person. When a bidder has more than one person authorized to bid, then documentation of those persons with signature authority for bidding must accompany the bid or be on file at the region office. Mail-in envelopes are available at all region offices. One bid per mailed-in envelope.
- B. Mail-in or otherwise delivered bids will be accepted up to 4:30 p.m. the last business day before the auction by the region office in which the sale is located. Bidders assume the risk for the method of delivery they chose. The DNR assumes no responsibility for any delays caused by any delivery service.
- C. Sealed bid envelopes must contain the following:
  1. A completed '**Log Sort Sealed Bid Form**';
  2. A completed '**Log Sort Sealed Bid Supplemental Information Form**' and;
  3. A bid deposit



# Department of Natural Resources Region Offices

## Olympia Headquarters

1111 Washington St SE  
MS 47000  
Olympia, WA 98504-7000  
(360) 902-1000  
[www.dnr.wa.gov](http://www.dnr.wa.gov)

## Product Sales &

### Leasing Division

1111 Washington St SE  
MS 47014  
Olympia, WA 98504-7014  
(360) 902-1600

## South Puget Sound Region

950 Fairman Ave N  
Enumclaw, WA 98022-9282  
(360) 825-1631

## Pacific Cascade Region

601 Bond Road  
PO Box 280  
Castle Rock, WA 98611-0280  
(360) 577-2025

## Southeast Region

713 Bowers Road  
Ellensburg, WA 98926-9301  
(509) 925-8510

## Northwest Region

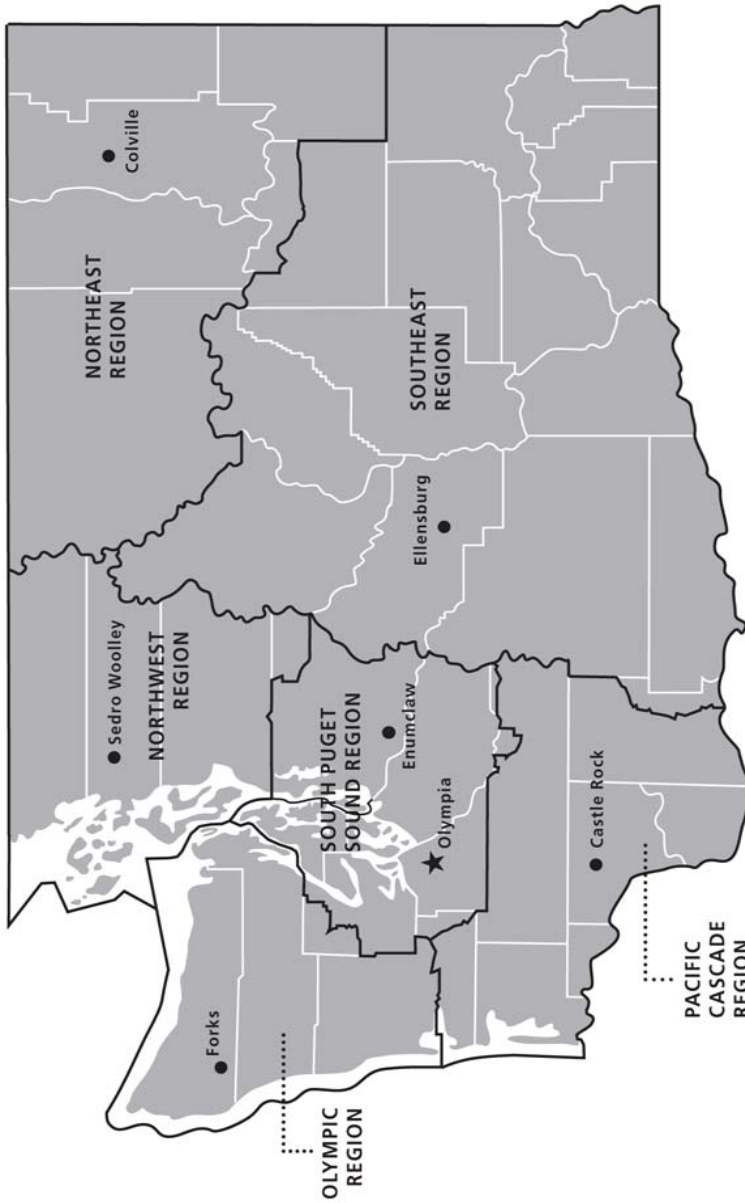
919 N Township St  
Sedro Woolley,  
WA 98284-9384  
(360) 856-3500

## Olympic Region





411 Tillicum Lane  
Forks, WA 98331-9271  
(360) 374-2800

## Northeast Region

225 S Silke Road  
PO Box 190  
Colville, WA 99114-0190  
(509) 684-7474



## DNR REGIONS

-  DNR Region Boundaries
-  County Boundaries
-  DNR Region Office
-  Olympia Headquarters



WASHINGTON STATE DEPT OF  
**NATURAL  
RESOURCES**



For more information about how public lands are managed visit DNR's web page at [www.dnr.wa.gov](http://www.dnr.wa.gov)

Fire, Burn Ban Information and Region Offices  
Toll Free: 1-800-527-3305 General TTY: 7-1-1





WASHINGTON STATE DEPT OF  
**NATURAL  
RESOURCES**

1111 WASHINGTON ST SE  
MS 47014  
OLYMPIA WA 98504-7014

[www.dnr.wa.gov](http://www.dnr.wa.gov)

For alternate formats  
of this document,  
Call (360) 902-1000  
TRS: 7-1-1

PRINTED IN THE USA ON RECYCLED PAPER

