

Summary Report on the  
*Draft* Modeling Results  
for the  
Preferred Alternative

**Amended March 3, 2004**

Prepared by  
Washington State  
Department of Natural Resources

March 2, 2004

**Report Purpose:**

Provide the Board of Natural Resources, the Department and the public with modeling information regarding the Preferred Alternative for the Final Environmental Impact Statement on Alternatives for Sustainable Forest Management on State Trust Lands in Western Washington and for determining the Sustainable Harvest level.

**Caveats:**

Data and results presented in this report will undergo further review and analysis for the Final Environmental Impact Statement (FEIS). Refinements and changes to the data and modeling outputs may occur during this analysis. A final report will be presented to the Board of Natural Resources along with the publication of the FEIS.

**Table of Contents**

List of Tables ..... 3

Key Policy and Procedural differences between Preferred Alternatives and Alternative 1 4

Changes in Forest Structure ..... 5

Changes in Inventory ..... 6

Land Class distribution and Harvest Deferrals ..... 7

    Total ..... 7

Financial Summary ..... 8

Summary Information Trust-by-Trust Performance under Preferred Alternative and Alternative 1 ..... 9

    Net Present Value (\$ millions) at year ..... 11

State Trusts Forest Board Transfer and Forest Board Purchase County-by-County under Preferred Alternative and Alternative 1 ..... 12

Sustainable Harvest Calculation Group Information ..... 15

Additional summary information about the Preferred Alternative ..... 16

Region-level Information from the Preferred Alternative

**List of Tables**

Table 1 Land class and harvest deferrals for the Preferred Alternative.....	7
Table 2 On and Off-base acres for the Preferred Alternative .....	7
Table 3 Land class and harvest deferrals for Alternative 1 .....	7
Table 4 On and Off-base acres for Alternative 1 .....	7
Table 5 Average annual revenue and cost (\$ millions) for Preferred Alternative .....	8
Table 6 Estimated annual average net revenue (\$ millions/year) to the Trust for decade 19	
Table 7 Trust annual average net revenue (\$ millions/year) over 7 decades for the Preferred Alternative.....	9
Table 8 Trust annual average harvest volume (MMBF/year) over 7 decades for the Preferred Alternative.....	10
Table 9 Trust annual average harvest volume (MMBF/year) over 7 decades for Alternative 1.....	10
Table 10 Trust Performance over life of HCP under Preferred Alternative .....	11
Table 11 Trust Performance over life of HCP under Alternative 1 .....	11
Table 12: Average annual volume and gross revenues over 7 decades .....	12
Table 13: Forest Board Transfer and Forest Board Purchase estimated average annual gross revenues (\$millions/year) from timber harvests over 7 decades for the Preferred Alternative .....	13
Table 14: Forest Board Transfer and Forest Board Purchase estimated average annual gross revenues (\$millions/year) from timber harvests over 7 decades for Alternative 1.....	13
Table 15 Forest Board Transfer and Forest Board Purchase harvest volumes (MMBF/year) over 7 decades for the Preferred Alternative .....	14
Table 16 Forest Board Transfer and Forest Board Purchase harvest volumes (MMBF/year) over 7 decades for Alternative 1.....	14
Table 17 Western Washington Harvest Flow (MMBF/year) over 7 decades by Sustainable Harvest Group .....	15
Table 18 Average annual silvicultural harvest treatments (acres/year) for Preferred Alternative in decade 1 .....	16
Table 19 Annual average silvicultural harvest treatments (acres/year) for Alternative 1 in decade 1 .....	16
Table 20 Average Annual Area (as percent of on-base land class category) receiving a silviculture harvest treatment in the Preferred Alternative .....	17
Table 21 Average Annual Area (as percent of on-base land class category) receiving a silviculture harvest treatment in Alternative 1 .....	17

**Key Policy and Procedural differences between Preferred Alternatives and Alternative 1**

Preferred Alternative	Alternative 1
Sustainable Timber harvest flow –timber harvest flow (volume) not to vary more than a +/- 25% from one decade to the next.	Sustainable Timber harvest flow –timber harvest flow (volume) not to vary more than a +/- 25% from the long-term average.
<b>Timber harvest levels – a policy objective of maximizing the value of the harvest from the on-base forest acres subject to other policy objectives and constraints.</b>	Timber harvest levels – a policy objective of maximizing the volume of the harvest from the on-base forest acres subject to other policy objectives and constraints.
<b>Westside Ownership Groups (or Sustainable Harvest units) 20 units</b>	Westside Ownership Groups (or Sustainable Harvest units) 24 units
Biodiversity pathways – employing silviculture to create, develop, enhance and/or maintain forest biodiversity and health in specified locations.	
Older Forest –a policy objective that targets the development of 10 to 15 percent of each Westside HCP Planning Unit as older forests based on structural characteristics.	Older Forest –a continuation of current policy and procedures
Maintaining mature forest components – procedure revised to remove 50/25 WAU strategy replaced by extended SEPA analysis now in place for every timber sale.	Maintaining mature forest components –50/25 WAU strategy maintained
Northern Spotted Owl management – procedure revised to reflect release of Administrative Owl circles (Status-1-Reproductive and Southwest Washington circles) in 2007, use of HCP owl management strategies and the priority of biodiversity management in northern spotted owl management areas (OESF, NRF and dispersal management areas).	Northern Spotted Owl management – harvest deferred in Administrative Owl circles (Status-1-Reproductive and Southwest Washington circles) in perpetuity and HCP owl management areas managed under procedural constraints limiting silvicultural investments (OESF, NRF and dispersal management areas).
Riparian management – procedure to be finalized with consultation with the Federal Services. Board policy is that riparian management zone will be actively managed with innovative silviculture at appropriate moderate levels (similar in area under treatment to Alternative 2 outcomes) for conservation benefits and revenue generation.	Riparian management and harvest deferred in perpetuity
Legacy and reserve tree procedure will be updated to reflect HCP strategy of retaining a least 8 trees per acre or more when stands are regeneration harvest stands.	Legacy and reserve tree procedure maintained at retaining 7% of existing stocking.
<p>Silviculture: <i>Uplands area with General Objectives:</i> focus on maximizing the economic value of the stand subject to objectives of sustainability. Commercial cohorts (these are age or structural groups or sub-groups that exist in a stand or landscape) are typically managed with even-age silvicultural regimes, typical planting densities of 350 trees per acre, vegetation management, precommercial thinning as necessary. For instance, regeneration harvests might occur at approximately 55 years for a site III Douglas-fir, with different ages for other species and sites.</p> <p><i>Uplands area with Specific Objectives:</i> focus on improving forest health, developing habitat and protecting sensitive resources. Commercial cohorts typically managed managed with even-age silvicultural regimes, typical planting densities of 350-500 trees per acre, vegetation management, precommercial thinning as necessary, intermediate thinnings to reduce tree densities and promote diameter growth, recruitment treatments for snags, down woody debris and under-planting as necessary, and regeneration harvests occurring between 70 and 140 years for a site III Douglas-fir, with different ages for other species and sites.</p> <p><i>Riparian and wetland areas:</i> focus on improving forest health, developing older forest conditions and protecting sensitive resources. Commercial cohorts managed with uneven-age silvicultural regimes, hand vegetation management and precommercial thinning as necessary, intermediate thinnings to reduce tree densities and promote diameter growth with recruitment treatments for snags and down woody debris and under-planting as necessary.</p> <p>Preferred Alternative</p>	<p>Silviculture: <i>Uplands area with General Objectives and Specific Objectives:</i> focus on maximizing the volume production of the stand subject to objectives of sustainability. Commercial cohorts managed with even-age silvicultural regimes, typical planting densities of 400 plus trees per acre, vegetation management, precommercial thinning as necessary, intermediate thinnings and/or late rotational thinnings (partial harvests) as necessary to meet objectives and regeneration harvests typically at 60 years or later for a site III Douglas-fir.</p> <p><i>Riparian</i> – no management, except road access</p>
On-base acres by 2014 = 1,177,600 acres	On-base acres by 2014 = 654,100 acres

### Changes in Forest Structure

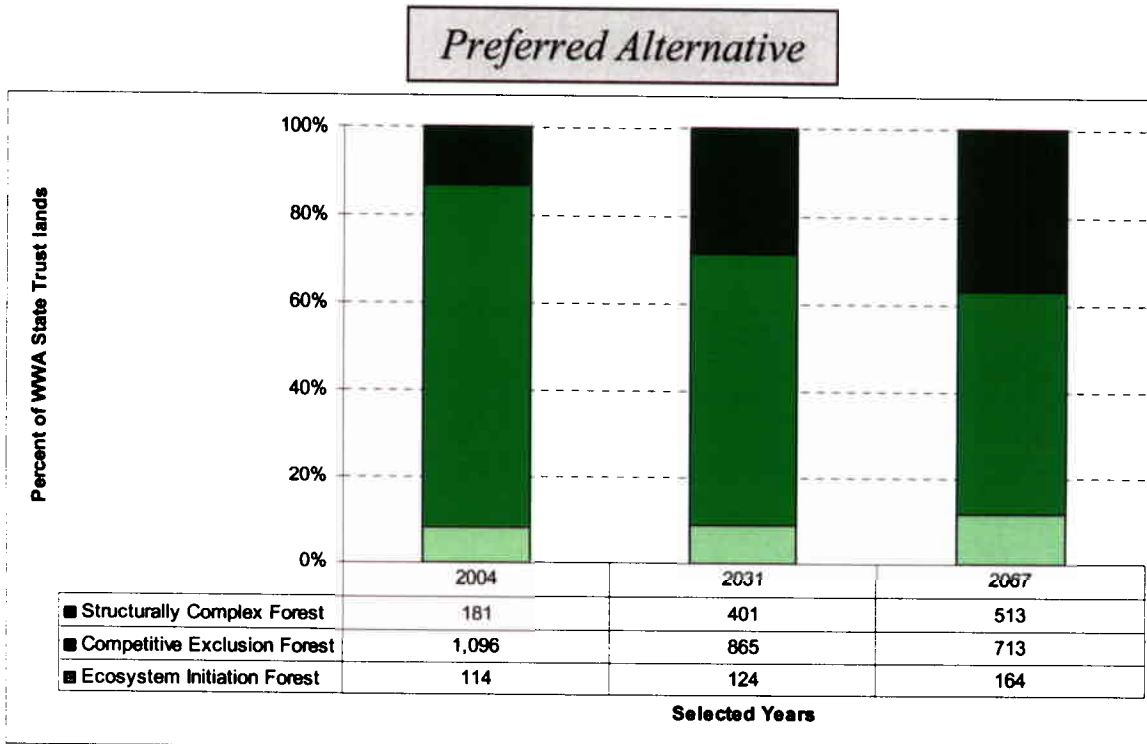


Figure 1 Stand Development Stage area (thousands of acres) for the Preferred Alternative

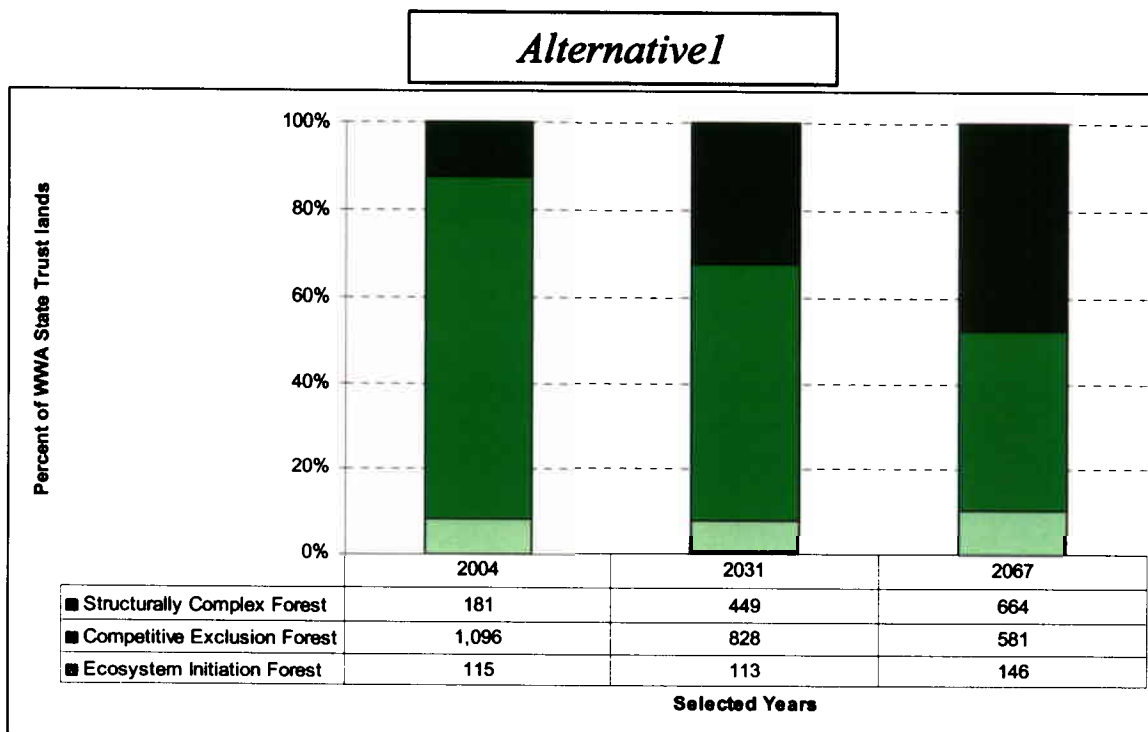
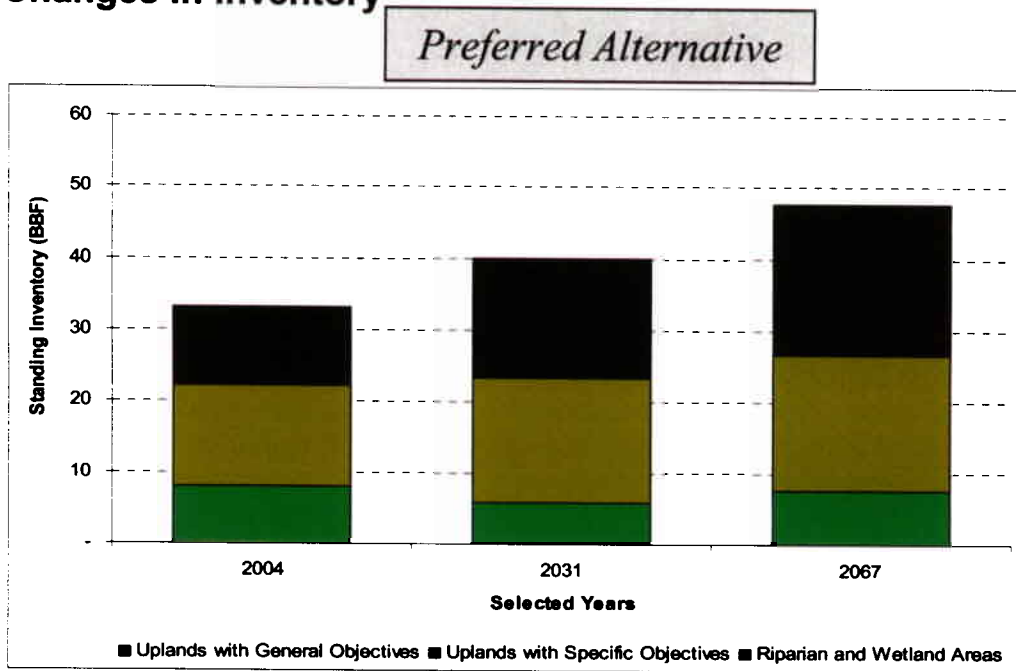
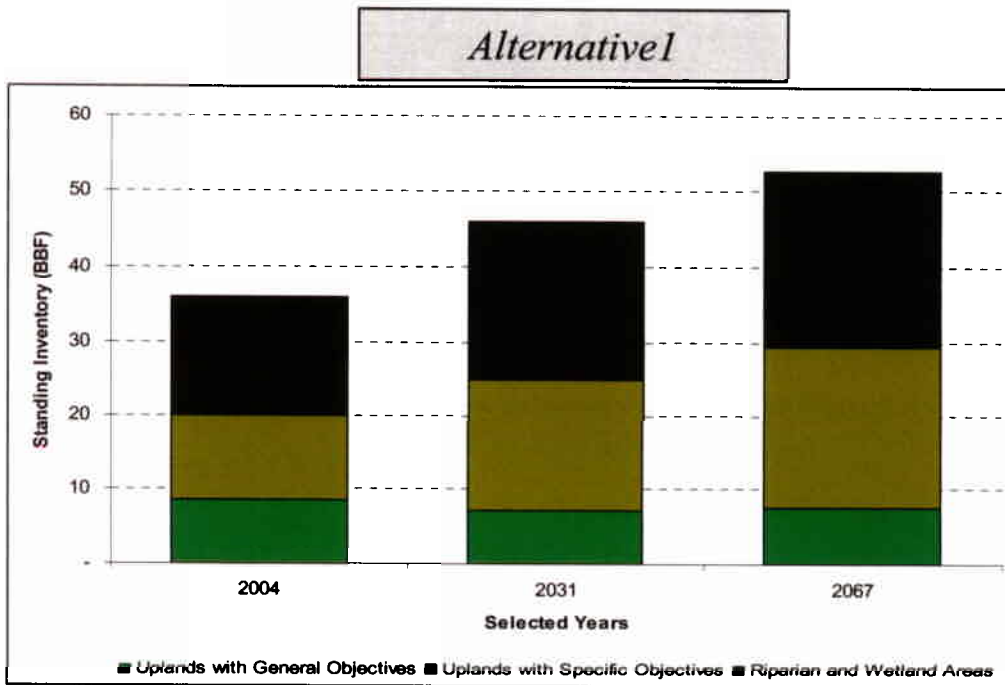


Figure 2 Stand Development stage areas (thousands of acres) for Alternative 1

### Changes in Inventory



**Figure 3 Standing inventory effects with the Preferred Alternative**



**Figure 4 Standing inventory effects with Alternative 1**

**Land Class distribution and Harvest Deferrals***Preferred Alternative***Table 1 Land class and harvest deferrals for the Preferred Alternative**

	Harvest deferrals			Total
	Long-term	Short-term	Not deferred	
Uplands with General Objectives	8,500	44,900	309,300	362,700
Uplands with Specific Objectives	124,100	149,200	328,000	601,300
Riparian and Wetland Areas	80,500	108,400	237,800	426,700
<b>WWA total</b>	<b>213,100</b>	<b>302,500</b>	<b>875,100</b>	<b>1,390,700</b>

**Table 2 On and Off-base acres for the Preferred Alternative**

Year	Off-base	On-base	Total
2004	515,600	875,100	1,390,700
	37%	63%	100%
2014	213,100	1,177,600	1,390,700
	15%	85%	100%

Table notes:

The off-base acreage includes long and short-term harvest deferrals.

*Alternative 1***Table 3 Land class and harvest deferrals for Alternative 1**

	Harvest deferrals			Total
	Long-term	Short-term	Not deferred	
Uplands with General Objectives	57,000	200	305,600	362,800
Uplands with Specific Objectives	252,900	25,800	322,500	601,200
Riparian and Wetland Areas	176,200	13,700	236,800	426,700
<b>WWA total</b>	<b>486,100</b>	<b>39,700</b>	<b>864,900</b>	<b>1,390,700</b>

**Table 4 On and Off-base acres for Alternative 1**

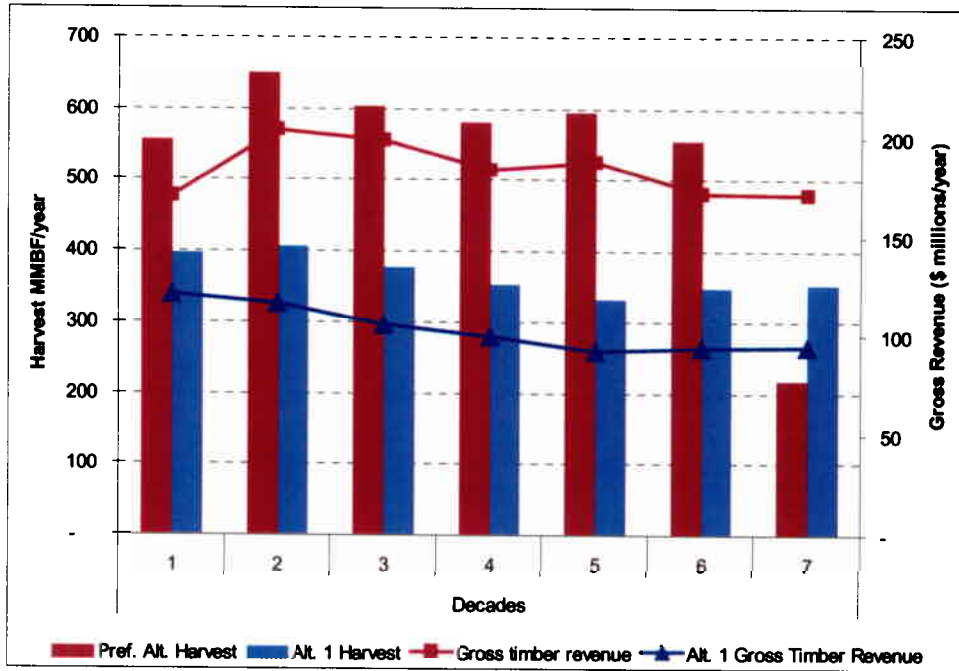
Year	Off-base	On-base	Total
2004	762,600	628,100	1,390,700
	55%	45%	100%
2014	736,600	654,100*	1,390,700
	53%	47%	100%

Note:

\*The off-base acreage includes long, short-term harvest deferrals and the riparian management area.

**Financial Summary**

**Figure 5 Western Washington State Trust lands annual average Gross Revenue and Harvest volume**



**Table 5 Average annual revenue and cost (\$ millions) for Preferred Alternative**

Revenue	Decades						
	1	2	3	4	5	6	7
Westside timber	170	203	198	183	188	172	171
Eastside timber	20	20	20	20	20	20	20
Non-timber	19	19	19	19	19	19	19
<b>Total</b>	<b>208</b>	<b>242</b>	<b>237</b>	<b>222</b>	<b>226</b>	<b>210</b>	<b>210</b>
<b>Total Costs</b>	<b>57</b>	<b>61</b>	<b>59</b>	<b>58</b>	<b>59</b>	<b>58</b>	<b>56</b>
<b>Net Revenue</b>	<b>152</b>	<b>181</b>	<b>178</b>	<b>164</b>	<b>167</b>	<b>153</b>	<b>154</b>
Costs as percentage of gross revenue	27%	25%	25%	26%	26%	27%	27%
Westside Harvest (MMBF)	554	650	602	580	594	555	544
Westside Area ('000 acres)	17	18	16	18	18	18	20

Table Notes:  
Revenues and Costs are based on 2003-04 values



**Summary Information Trust-by-Trust Performance under Preferred Alternative and Alternative 1****Table 6 Estimated annual average net revenue (\$ millions/year) to the Trust for decade 1**

Trust	Alternative 1	Preferred Alternative	Difference
Agricultural School	2.5	3.8	1.3
Capitol Grant	7.6	10.8	3.2
CEP&RI	4.7	6.0	1.3
Community College Forest Reserve	0.2	0.1	-0.1
Common School and Indemnity	45.4	62.4	17.0
Escheat	0.4	0.3	-0.1
State Forest Board Purchase	5.4	6.9	1.5
State Forest Board Transfer	33.0	53.4	20.4
Normal School	1.6	2.4	0.8
Scientific School	5.9	7.0	1.1
University - Original	0.3	0.2	-0.1
University - Transferred	0.4	2.1	1.7
Overall	107.2	155.2	48.0

Table Notes:

CEP&amp;RI = Charitable/Educational/Penal &amp; Reformatory Institution.

**Table 7 Trust annual average net revenue (\$ millions/year) over 7 decades for the Preferred Alternative**

Trust	Decades							Average
	1	2	3	4	5	6	7	
Agricultural School	4	4	5	3	4	3	4	4
Capitol Grant	11	12	11	9	8	12	9	10
CEP&RI	6	5	5	5	4	5	5	5
Community College Forest Reserve	0	1	1	1	0	0	1	1
Common School and Indemnity	62	76	77	74	76	71	75	73
Escheat	0	0	0	1	0	0	0	0
State Forest Board Purchase	7	7	7	6	6	6	4	6
State Forest Board Transfer	53	62	60	55	56	44	45	54
Normal School	2	3	4	3	4	4	4	3
Scientific School	7	11	8	6	9	8	8	8
University - Original	0	0	1	0	0	0	1	0
University - Transferred	2	4	4	5	3	3	3	3
WWA (total)	155	185	182	168	171	157	158	168

## Trust annual average harvest volume (MMBF/year) over 7 decades

*Preferred Alternative***Table 8 Trust annual average harvest volume (MMBF/year) over 7 decades for the Preferred Alternative**

	Decades						
	1	2	3	4	5	6	7
Agricultural School	16	15	18	11	13	12	16
Capitol Grant	46	49	40	33	32	46	35
CEP&RI	18	14	13	14	9	16	13
Community College Forest Reserve	0	3	4	2	1	1	3
Common School and Indemnity	166	217	205	209	223	209	215
Escheat	1	2	1	2	2	1	1
State Forest Board Purchase	39	43	38	36	30	31	20
State Forest Board Transfer	220	241	227	212	222	177	181
Normal School	9	10	12	12	17	14	17
Scientific School	26	38	26	20	30	30	27
University - Original	0	1	1	1	1	1	1
University - Transferred	11	18	16	29	16	16	13
Overall	554	650	602	580	594	555	544

Table Notes:

CEP&amp;RI = Charitable/Educational/Penal &amp; Reformatory Institution.

*Alternative 1***Table 9 Trust annual average harvest volume (MMBF/year) over 7 decades for Alternative 1**

	Decades						
	1	2	3	4	5	6	7
Agricultural School	9	10	6	6	5	8	6
Capitol Grant	34	29	22	20	17	19	19
CEP&RI	15	11	9	10	6	8	6
Community College Forest Reserve	2	2	1	2	2	1	3
Common School and Indemnity	114	127	121	111	110	109	120
Escheat	2	1	1	0	2	1	2
State Forest Board Purchase	32	29	28	24	19	29	31
State Forest Board Transfer	157	155	144	145	135	139	136
Normal School	6	5	9	7	6	8	6
Scientific School	23	25	18	17	14	14	12
University - Original	1	0	1	1	0	1	1
University - Transferred	1	10	16	7	15	13	12
WWA (total)	396	404	377	352	332	348	353

Table Notes:

CEP&amp;RI = Charitable/Educational/Penal &amp; Reformatory Institution.

## Trust Performance over life of HCP

*Preferred Alternative*

Table 10 Trust Performance over life of HCP under Preferred Alternative

Trust	Net Present Value (\$ millions) at year			
	10	20	40	64
Agricultural School	30.5	50.4	71.7	78.9
Capitol Grant	85.5	144.7	193.8	213.0
CEP&RI	47.9	73.9	99.1	108.8
Community College Forest Reserve	0.6	4.7	9.0	9.6
Common School and Indemnity	492.3	862.9	1,229.3	1,379.7
Escheat	2.3	4.0	6.1	6.9
State Forest Board Purchase	51.3	84.5	112.8	122.7
State Forest Board Transfer	421.7	729.0	1,008.9	1,112.7
Normal School	18.7	31.6	48.1	56.2
Scientific School	54.8	109.7	144.9	162.2
University - Original	1.2	2.4	4.5	5.3
University - Transferred	16.3	34.6	54.8	60.9
<b>Overall</b>	<b>1,223.2</b>	<b>2,132.4</b>	<b>2,983.2</b>	<b>3,317.0</b>

Table Notes:

CEP&amp;RI = Charitable/Educational/Penal &amp; Reformatory Institution.

All trust revenues listed and departmental costs (excluding capital costs) included in the net present value calculation

Real Interest rate: 5%

*Alternative 1*

Table 11 Trust Performance over life of HCP under Alternative 1

Trust	Net Present Value (\$ millions) at year			
	10	20	40	64
Agricultural School	17.8	27.5	34.6	37.3
Capitol Grant	56.8	84.4	104.4	111.1
CEP&RI	36.3	53.2	67.6	72.6
Community College Forest Reserve	1.6	4.0	5.0	5.5
Common School and Indemnity	345.0	553.1	742.2	815.0
Escheat	2.9	3.5	4.4	5.0
State Forest Board Purchase	39.2	59.6	77.6	84.2
State Forest Board Transfer	247.7	395.8	523.7	569.7
Normal School	12.0	17.7	25.6	28.2
Scientific School	43.7	72.8	92.3	98.7
University - Original	1.9	2.5	3.3	3.6
University - Transferred	2.6	10.7	19.6	23.7
<b>Overall</b>	<b>807.6</b>	<b>1,284.8</b>	<b>1,700.2</b>	<b>1,854.4</b>

Table Notes:

CEP&amp;RI = Charitable/Educational/Penal &amp; Reformatory Institution.

All trust revenues listed and departmental costs (excluding capital costs) included in the net present value calculation

Real Interest rate: 5%

## State Trusts Forest Board Transfer and Forest Board Purchase County-by-County

**Table 12: Average annual volume and gross revenues over 7 decades**

County	Alternative 1	Preferred Alternative	Alternative 1	Preferred Alternative
	Volume (MMBF/year)		(\$ million /year)	
Clallam	10	39	2.5	12.1
Clark	11	13	3.0	4.3
Cowlitz	4	5	1.2	1.7
Grays Harbor	12	14	3.4	4.6
Jefferson	4	5	1.1	1.8
King	8	8	2.0	2.5
Kitsap	2	2	0.5	0.8
Lewis	15	19	4.1	6.3
Mason	6	8	1.6	2.8
Pacific	5	12	1.4	3.8
Pierce	5	5	1.4	1.8
Skagit	28	36	7.2	11.8
Skamania	7	14	1.9	4.8
Snohomish	23	29	5.7	9.1
Thurston	18	19	4.9	6.4
Wahkiakum	4	7	1.0	2.1
Whatcom	10	15	2.6	5.2
<b>WWA total</b>	<b>172</b>	<b>250</b>	<b>45</b>	<b>82</b>

Table 13: Forest Board Transfer and Forest Board Purchase estimated average annual gross revenues (\$millions/year) from timber harvests over 7 decades for the Preferred Alternative

County	<i>Preferred Alternative</i>						
	Decades						
	1	2	3	4	5	6	7
Clallam	12.4	14.2	13.0	10.0	11.9	9.5	13.3
Clark	3.3	4.5	4.4	5.0	5.6	3.6	3.7
Cowlitz	1.8	1.9	2.0	1.9	1.7	1.3	1.1
Grays Harbor	5.7	5.8	5.7	5.3	3.0	4.6	2.4
Jefferson	1.8	2.5	2.1	2.3	1.6	1.3	1.2
King	2.5	2.9	1.6	2.4	2.7	2.0	3.1
Kitsap	0.8	0.8	0.5	0.9	0.9	0.9	0.8
Lewis	5.8	7.1	7.8	7.8	6.5	4.6	4.4
Mason	1.5	2.6	3.0	3.6	3.4	3.0	2.6
Pacific	4.7	3.9	3.1	3.9	3.4	3.8	3.5
Pierce	2.6	1.9	1.8	1.9	1.5	1.6	1.5
Skagit	12.1	13.3	10.7	11.4	13.1	9.8	12.4
Skamania	5.5	5.2	4.9	4.0	4.3	4.4	5.5
Snohomish	8.9	10.2	11.7	8.5	9.3	7.5	7.4
Thurston	6.2	8.0	7.7	7.4	6.5	4.4	4.7
Wahkiakum	1.9	2.4	2.5	2.3	2.1	1.5	2.1
Whatcom	5.3	5.9	5.9	4.2	6.0	4.3	4.9
WWA total	82.9	93.1	88.6	82.9	83.5	68.4	74.7

Table 14: Forest Board Transfer and Forest Board Purchase estimated average annual gross revenues (\$millions/year) from timber harvests over 7 decades for Alternative 1

County	<i>Alternative 1</i>						
	Decades						
	1	2	3	4	5	6	7
Clallam	3.1	2.7	2.6	2.1	2.3	2.8	2.1
Clark	3.0	3.3	3.2	3.1	2.7	2.9	2.5
Cowlitz	1.3	1.3	1.3	1.2	1.2	1.2	1.1
Grays Harbor	3.2	3.4	4.0	3.4	2.3	3.8	3.4
Jefferson	1.4	1.4	1.2	1.1	0.8	0.8	1.0
King	2.6	2.3	2.3	2.0	2.2	1.2	1.2
Kitsap	0.8	0.6	0.6	0.4	0.4	0.4	0.4
Lewis	4.5	4.3	3.9	4.4	3.7	3.9	3.9
Mason	2.3	2.3	2.0	1.9	1.2	0.9	1.0
Pacific	1.3	1.5	1.5	1.3	1.3	1.4	1.2
Pierce	1.6	1.2	1.5	1.4	1.3	1.5	1.4
Skagit	8.3	6.9	5.2	7.0	7.3	7.9	7.8
Skamania	1.4	1.8	1.8	1.9	1.9	2.2	2.4
Snohomish	5.9	5.8	5.7	5.6	4.9	5.6	6.1
Thurston	6.3	5.3	4.6	4.5	4.2	4.7	4.9
Wahkiakum	1.0	1.0	0.9	0.9	0.9	1.0	1.0
Whatcom	2.7	2.8	2.8	2.3	2.6	2.4	2.6
WWA total	50.8	48.1	45.0	44.4	41.3	44.5	44.1

**Table 15 Forest Board Transfer and Forest Board Purchase harvest volumes (MMBF/year) over 7 decades for the Preferred Alternative**

County	<i>Preferred Alternative</i>						
	Decades						
	1	2	3	4	5	6	7
Clallam	41	47	38	32	41	31	44
Clark	10	14	13	15	17	11	11
Cowlitz	6	6	6	5	5	4	3
Grays Harbor	17	18	18	16	9	14	7
Jefferson	5	8	7	6	5	4	4
King	8	10	5	7	9	7	11
Kitsap	2	2	1	2	3	3	2
Lewis	18	22	24	23	18	13	13
Mason	5	8	9	10	9	8	7
Pacific	15	13	10	12	11	12	11
Pierce	7	6	5	5	4	4	5
Skagit	40	35	34	34	39	30	38
Skamania	16	16	15	11	12	12	15
Snohomish	29	33	34	27	28	25	25
Thurston	18	25	23	22	18	13	14
Wahkiakum	6	8	7	7	6	5	7
Whatcom	16	16	16	13	18	13	15
<b>WWA (total)</b>	<b>259</b>	<b>284</b>	<b>265</b>	<b>248</b>	<b>252</b>	<b>208</b>	<b>232</b>

**Table 16 Forest Board Transfer and Forest Board Purchase harvest volumes (MMBF/year) over 7 decades for Alternative 1**

County	<i>Alternative 1</i>						
	Decades						
	1	2	3	4	5	6	7
Clallam	12	10	10	8	9	11	9
Clark	11	12	11	11	10	11	9
Cowlitz	4	5	5	4	4	4	4
Grays Harbor	11	12	16	13	9	14	12
Jefferson	5	5	4	4	3	3	4
King	10	10	10	8	9	5	4
Kitsap	3	2	2	2	2	1	1
Lewis	16	16	15	16	13	14	14
Mason	9	8	7	7	4	3	4
Pacific	5	6	6	5	5	5	5
Pierce	6	5	6	5	5	6	5
Skagit	32	29	20	27	27	30	32
Skamania	5	7	7	7	7	8	8
Snohomish	24	24	23	23	19	22	24
Thurston	22	19	17	16	15	17	17
Wahkiakum	4	4	3	3	3	4	4
Whatcom	10	11	11	9	10	10	10
<b>WWA total</b>	<b>189</b>	<b>183</b>	<b>172</b>	<b>169</b>	<b>154</b>	<b>167</b>	<b>167</b>

## Sustainable Harvest Calculation Group Information

**Table 17 Western Washington Harvest Flow (MMBF/year) over 7 decades by Sustainable Harvest Group**

Harvest flow (MMBF/year)		Decades						
		1	2	3	4	5	6	7
Federal Grant Trust and Forest Board Purchase		256	284	263	234	259	260	254
OESF		66	107	91	106	114	109	102
Capital Forest		38	47	46	52		29	24
Forest Board Transfer	Clallam	23	23	21	17	16	15	18
	Clark	8	13	13	14	12	10	10
	Cowlitz	5	5	6	5	4	4	3
	Grays Harbor	0.3	0.3	0.3	0.5	0.2	0.2	
	Jefferson	5	8	7	6	5	4	4
	King	8	10		7	9	7	11
	Kitsap	2	2		2	3	2	2
	Lewis	16	20	22	20	17	11	12
	Mason	5	8	9	10	9	8	7
	Pacific	9	9	7	7	8	7	8
	Pierce	5	4	4	4	3	2	3
	Skagit	40	35	34	34	39	30	38
	Skamania	12	13	14	10	10	11	12
	Snohomish	29	33	34	27	28	25	25
	Thurston	5	4	4	5	3	3	3
Wahkiakum	6	8	7	7	6	5	7	
Whatcom	16	15	15	12	17	13	14	
All Trusts in Western Washington (total)		554	650	602	580	594	555	557

Table Notes:

Shaded cells: not all sustainable harvest groups comply with the policy expectation of +/- 25% inter-decadal variation in this model run.

**Additional summary information about the Preferred Alternative***Preferred Alternative***Table 18 Average annual silvicultural harvest treatments (acres/year) for Preferred Alternative in decade 1**

Silvicultural Harvest Treatment	Uplands with General Objectives	Uplands with Specific Objectives	Riparian and Wetlands	Total	% of total
Regeneration	7,500	3,900		11,400	66%
Variable Density thinning		3,700	1500	5,200	30%
Traditional Thinning	700			700	4%
Total	8,200	7,600	1,500	17,300	100%

*Alternative 1***Table 19 Annual average silvicultural harvest treatments (acres/year) for Alternative 1 in decade 1**

Silvicultural Harvest Treatment	Uplands with General Objectives	Uplands with Specific Objectives	Riparian and Wetlands	Total	% of total
Regeneration	7,900	2,300		10,200	70%
Partial harvest	300	1,600		1,900	13%
Traditional Thinning	1,400	1,000		2,400	17%
Total	9,600	4,900	900*	14,500	100%

Table Notes:

Modeled riparian activities in Alternative 1 are not expected to remove volume from the riparian area. Total does not include riparian area activity



*Preferred Alternative***Table 20 Average Annual Area (as percent of on-base land class category) receiving a silviculture harvest treatment in the Preferred Alternative**

Decade	Uplands with General Objectives	Uplands with Specific Objectives	Riparian and Wetlands	Total
1	2.3%	1.6%	0.4%	1.5%
2	2.2%	1.2%	1.3%	1.5%
3	1.8%	1.4%	0.9%	1.4%
4	2.4%	1.5%	0.7%	1.6%
5	1.5%	1.8%	1.1%	1.5%
6	2.1%	1.5%	1.0%	1.6%
7	1.5%	2.1%	1.2%	1.5%
<b>Overall</b>	<b>2.0%</b>	<b>1.6%</b>	<b>1.0%</b>	<b>1.5%</b>

Table Notes:

All harvest activities are included. On-base acres in 2014

*Alternative 1***Table 21 Average Annual Area (as percent of on-base land class category) receiving a silviculture harvest treatment in Alternative 1**

Decade	Uplands with General Objectives	Uplands with Specific Objectives	Riparian and Wetlands	Total
1	3.1%	1.4%		2.2%
2	3.1%	1.7%		2.3%
3	2.7%	1.9%		2.3%
4	2.7%	1.6%		2.2%
5	3.0%	1.8%		2.4%
6	2.7%	1.9%		2.3%
7	3.1%	0.7%		2.4%
<b>Overall</b>	<b>2.9%</b>	<b>1.6%</b>		<b>2.3%</b>

Table Notes:

All harvest activities are included. On-base acres in 2014