

130th Anniversary of the Washington Geological Survey



1918: Placer miners on Skookum Creek, Whatcom County

February 25, 1890:
Washington
Geological Survey Act
establishes Office of
the State Geologist

1893 – 1901: Survey
inactive due to lack of
appropriations

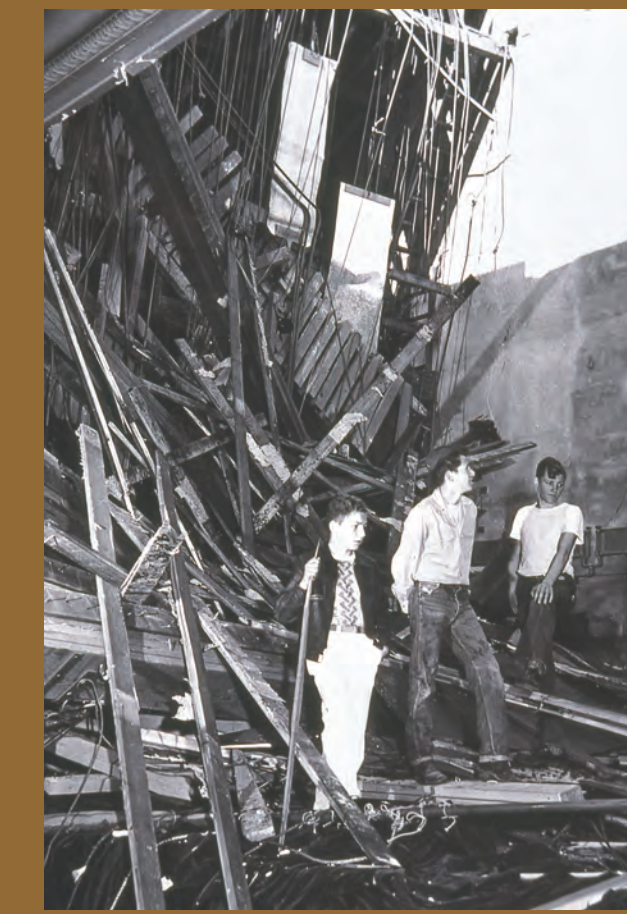
1910: Survey
published
first geologic
map,
*Geologic Map
of the
Republic
District*

1913: Survey
published
*Glaciation of the
Puget Sound
Region* by J Harlan
Bretz

1923: Much of our early work was performing topographic surveys in cooperation with the U.S. Geological Survey



1935: Survey was
separated into two:
Division of Geology,
Pullman and the
Division of Mines and
Mining, Olympia



School in Puyallup destroyed by 1949 earthquake

1945: Consolidation of
Division of Geology and
Division of Mines and
Mining into Division of
Mines and Geology,
Olympia

1936: First
statewide
geologic map
published

1949: Largest earthquake in western
Washington history near Olympia



1957: Miners working in the Roslyn coal fields

1951: Oil and Gas
Conservation Act
passed

1962: Pump on Sunshine Mining Co. Medina no. 1 oil production well, Grays Harbor County



1964:
Tsunami on
outer coast
from
Alaskan
earthquake

1968: Survey transferred
from the Department of
Conservation to the
Department of Natural
Resources, Olympia

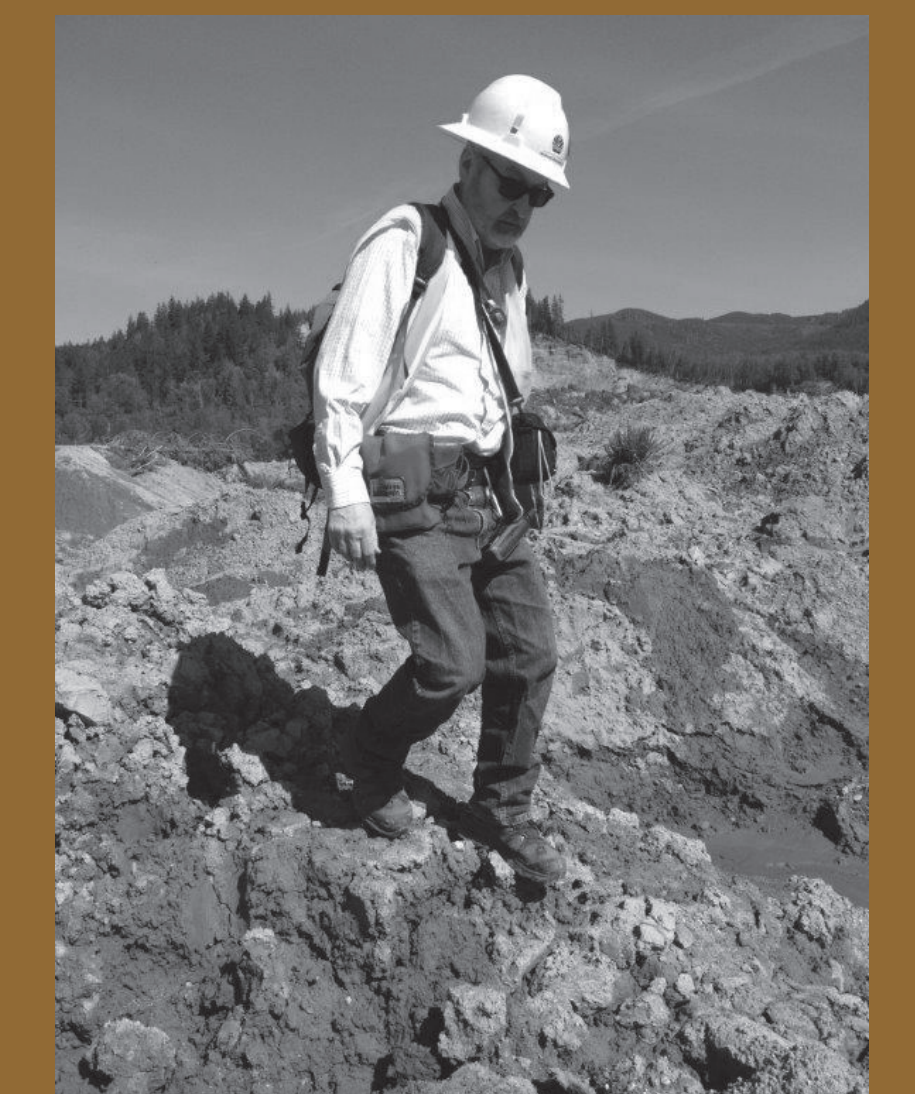
1973: Survey
becomes the
Division of
Geology and
Earth
Resources



1980: Eruption of
Mount St. Helens

1974:
First active
fault in
Washington
mapped

1994: Metals
Mining and Milling
Operations Act
passed



2014: Survey geologist investigating SR 530 landslide deposits

2004 – 2008: Eruption
of Mount St. Helens

1998:
Columbian
mammoth
became state
fossil

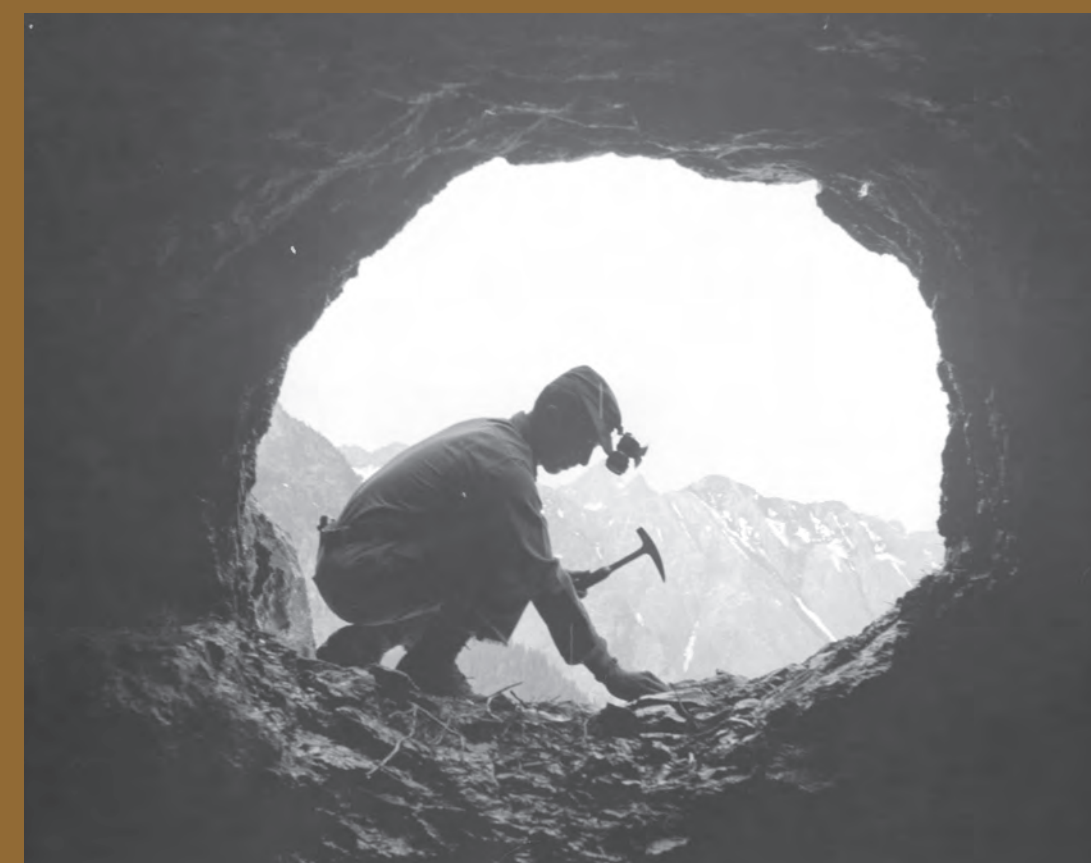
2005: Survey
released statewide
1:100,000-scale
digital geologic
map

2017:
Washington
Lidar Portal
released

1890 1900 1910 1920 1930 1940 1950 1960 1970 1980 1990 2000 2010 2020

1890: George A.
Bethune
appointed as the
first State
Geologist

1901: Washington
Geological Survey
established at the University
of Washington, Seattle



~1910: Miner working the Boundary Red Mountain gold mine, Whatcom County

1920: Department
of Conservation
and Development
formed and
Division of Geology
put under its
jurisdiction at
Washington State
College, Pullman

1935:
Washington
Geology
Library created

1946:
Earthquake in
the south Puget
Sound region
prompted
placement of
state's first
strong motion
instrument in
Olympia

1960: Survey published
*Inventory of Washington
Minerals*

1965: Union Pacific branch rail line collapse during Puget Sound earthquake near Tumwater, Washington



1965: Puget
Sound
earthquake
near Seatac

1971:
Passage of
the Surface
Mining Act

1974:
Passage of
the
Geothermal
Resources
Act

1978: Petrified
wood became
state gem

2001: Nisqually
earthquake

2001: Collapse of parapet of Washington Federal Savings building during Nisqually earthquake, downtown Olympia



2002: Survey
published statewide
1:250,000-scale
geologic maps

2009: Nile
landslide
2014: SR 530
landslide

2006: Survey
released Washington
Geologic Information
Portal interactive
map site

2017: Division
renamed the
Washington
Geological
Survey



1890
George A.
Bethune



1896
Henry
Landes



1921
Solon
Shedd



1925
Dr. Harold E.
Culver



1945
Sheldon L.
Glover



1957
Marshall T.
Huntting



1971
Vaughn E.
Livingston



1982
Raymond
Lasmanis



2001
Ron
Teissere



2008
David K.
Norman



2019
Casey
Hanell