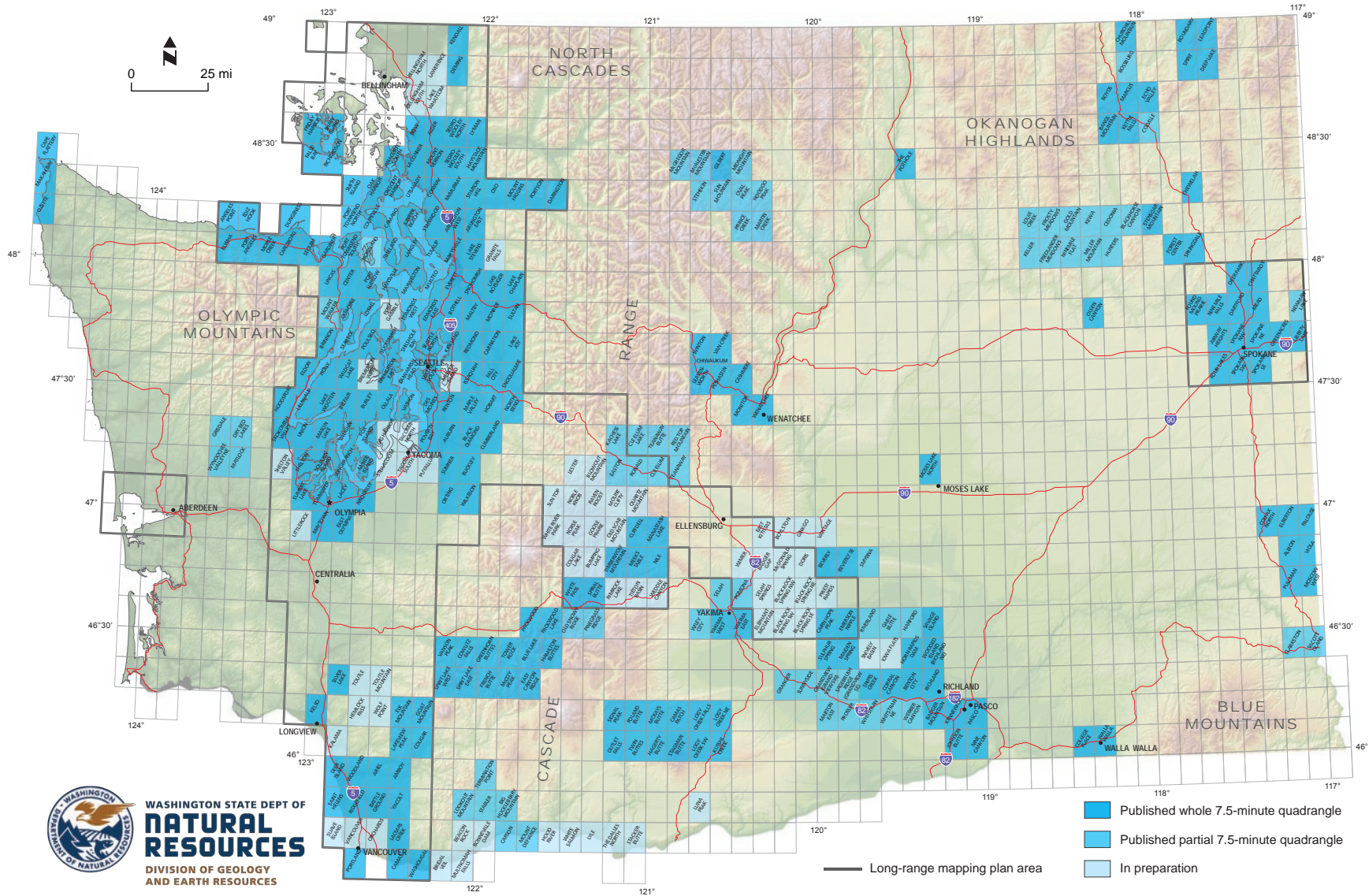


Published and in preparation geologic mapping of 7.5-minute (1:24,000-scale) quadrangles

December, 2014



PUBLISHED AND IN-PROGRESS 7.5-MINUTE QUADRANGLES IN WASHINGTON BY

NAME

The list below is in alphabetical order by quadrangle name and gives abbreviated versions of author(s), year published, publisher, series, and series number. See references by author below for a complete citation. Quadrangle names in blue have links to the online maps. All other published maps may be consulted at the [Washington Geology Library](#).

* * * * *

GLOSSARY

[brackets] – indicate alternate quad name, explanatory material, or URL

(parentheses) – indicate partial quadrangle or expected year of publication

B – DGER or USGS Bulletin

DGER – Washington Division of Geology and Earth Resources

DOGAMI – Oregon Department of Geology and Mineral Industries

GM – DGER or IGS Geologic Map

GMS – Geological Map Series

GQ – USGS Geologic Quadrangle Map

I – USGS Miscellaneous Geologic Investigations Map

IGS – Idaho Geological Survey

GSA – Geological Society of America

in prep. – in preparation; field work and map construction in progress; expected year of publication given where known

in press – accepted for publication; editing and cartography in progress; expected year of publication given where known

mapped – draft map finished, but not in preparation for publication

SP – Special Paper

MF – USGS Miscellaneous Field Studies Map

MS – DGER Map Series

OFR – DGER or USGS Open File Report

PP – USGS Professional Paper

RHO – Rockwell Hanford Operations

SIM – USGS Scientific Investigations Map

TR – IGS Technical Report

UI – University of Idaho

unpub. – unpublished

USGS – U.S. Geological Survey

UW – University of Washington

* * * * *

Adams Mountain (partial): Smith, 1991, DGER OFR 91-4 [Ninemile Creek–Wilmont Creek–Hunters Creek]

Airway Heights: Derkey and others, 2004, DGER OFR 2004-1

Albion: Bush and others, 2005, University of Idaho?

Alger: Dragovich and others, 1998, DGER OFR 98-5

Amboy: Evarts, 2005, USGS SIM 2885

Anacortes South: Dragovich and others, 2000, DGER OFR 2000-6

Angeles Point: Polenz and others, 2004, DGER OFR 2004-14

Ariel: Evarts, 2004, USGS SIM-2826

Arlington East: Minard, 1980, USGS OFR 80-460

Arlington East: Minard, 1985, USGS MF-1739

Arlington West: Minard, 1980, USGS OFR 80-461

Arlington West: Minard, 1985, USGS MF-1740

Auburn: Mullineaux, 1961, USGS OFR-61-110

Auburn: Mullineaux, 1965, USGS GQ-406 Badger

Gap: Powell, *in prep.*, DGER [mapping nearly completed]

Badger Mountain: Geoscience Research Consultants, 1978, RHO-BWI-C-25 [SW Pasco Basin]

Bainbridge Island: Haugerud, 2005, USGS OFR 2005-1387

Bangs Mountain: Wilson, 1981, USGS OFR 81-581

Bangs Mountain: Kiver and Stradling, 1987, U.S. Bureau of Reclamation

Battle Ground: Howard, 2002, USGS MF-2395

Beacon Rock: *in prep.*, USGS

Belfair: Polenz and others, 2009, DGER OFR 2009-7

Bellevue South 7.5' x 15' quadrangle, east half of the [Issaquah]: Booth and others, 2012, USGS SIM 3211

Bellingham North: Haugerud, *in prep.*, USGS

Bellingham South: Haugerud, *in prep.*, USGS

Benton City: Geoscience Research Consultants, 1978, RHO-BWI-C-25 [SW Pasco Basin]

Beverly: Reidel, 1978, RHO-BWI-LD-4 [Saddle Mountains]

Beverly: Powell, *in prep.*, DGER [mapping of west half of quad nearly completed]

Beverly SE: Reidel, 1978, RHO-BWI-LD-4 [Saddle Mountains]

Big Huckleberry Mountain (partial): Czajkowski and others, 2014, DGER OFR 2014-01

Biggs Junction: Anderson?, *in prep.*, USGS

Black Diamond: Mullineaux, 1961, USGS OFR-61110

Black Diamond: Mullineaux, 1965, USGS GQ-407

Black Rock Spring: Powell, *in prep.*, DGER [mapping partially completed]

Black Rock Spring NE: Powell, *in prep.*, DGER [mapping partially completed]

Black Rock Spring NW: Powell, *in prep.*, DGER [mapping partially completed]

Black Rock Spring SW: Powell, *in prep.*, DGER [mapping partially completed]

Blackhorse Canyon (partial): Smith, 1991, DGER OFR 91-4 [Ninemile Creek–Wilmont Creek–Hunters Creek]

Blowout Mountain: Hammond, *mapped*, DGER

Blue Lake: Swanson, 1993, USGS OFR 93-297

Bonneville Dam: *in prep.*, USGS

Bossburg: Kiver and Stradling, 1987, U.S. Bureau of Reclamation.

Bothell (partial): Capps and others, 1973, DGER OFR 73-1 [southern Snohomish County]

Bothell: Minard, 1981, USGS OFR 81-106

Bothell: Minard, 1985, USGS MF-1747

Bothell: Troost and Booth, *in prep.*, USGS MFS

Boundary (partial): Yates, 1961, USGS OFR 61-175 [Map I-412]

Bow: Dragovich and others, 1998, DGER OFR 98-5

Boys: Wilson, 1980, USGS OFR 80-983

Boys: Kiver and Stradling, 1987, U.S. Bureau of Reclamation

Boylston: Powell, *in prep.*, DGER [mapping nearly completed]

Bremerton East (partial): Haugerud, 2005, USGS OFR 2005-1387 [Bainbridge Island]

Bremerton East: Haeussler, *in prep.*, USGS

Bremerton West: Haeussler, *in prep.*, USGS

Bridal Veil: *in prep.*, USGS

Brinnon: Carson, 1976, DGER OFR 76-3

Brinnon: Polenz and others, 2012, DGER MS 2012-02

Buckley: Crandell and Gard, 1959, USGS GQ-125

Buckley: Crandell, 1963, USGS PP 388-A [Lake Tapps 15' quadrangle]

Buckley (partial): Gard, 1968, USGS PP 388-B [Lake Tapps 15' quadrangle]

Bumping Lake: Hammond, *mapped*, DGER

Burley: Polenz and others, 2009, DGER OFR 2009-8

Caim Hope Peak: Goff, 1981, RHO-BWI C-21 [eastern Umtanum Ridge]

Caim Hope Peak: Powell, *in prep.*, DGER

Camano: Polenz and others, 2009, DGER GM-68

Camas: Evarts and O'Connor, 2008, USGS SIM 3017

Camas Patch: Hildreth and Fierstein, 2015, USGS SIM 3315

Cape Flattery: Snavelly and others, 1989, USGS OFR OF-89-141 [Cape Flattery and Cape Alava]

Carlsborg: Othberg and Palmer, 1979, DGER OFR 79-20

Carlsborg: Schasse and Wegmann, 2000, DGER OFR 2000-7

Carnation: Dragovich and others, 2010, DGER OFR 2010-1

Carson (partial): Czajkowski and others, 2014, DGER OFR 2014-01

Cashmere: Whetten and Waitt, 1978, USGS MF-908

Cedonia (partial): Smith, 1991, DGER OFR 91-4 [Ninemile Creek–Wilmont Creek–Hunters Creek]

Chattaroy: Hamilton and Derkey, 2005, DGER GM55

Chewelah (partial): Clark and Miller, 1965, USGS OFR OF-65-32

Chewelah: Carrara, 1990, USGS MF-2141

Churchill Mountain: Fox, 1981, USGS OFR 81-169

Clarkston (partial): Alloway and others, 2013, GSA SP 497

Cle Elum (partial): Walker, 1980, DGER OFR 80-1 [Roslyn–Cle Elum]

Cle Elum Lake (partial): Walker, 1980, DGER OFR 80-1 [Roslyn–Cle Elum]

Cliffdell: Hammond, 2010, DGER GM-76

Colfax North: Bush and others, 2005, UI OFR?

College Place: Derkey and others, 2006, DGER GM-62

Colville: Mills and others, 1985, DGER OFR 85-7

Conway: Dragovich and others, 2002, DGER OFR 2002-5

Corral Canyon: Geoscience Research Consultants, 1978, RHO-BWI-C-25 [SW Pasco Basin]

Corral Canyon (partial): Hagood, 1986, RHO-BW-SA-344 P [Horse Heaven Hills]

Cougar: Evarts and Ashley, 1990, USGS OFR 90-631

Cougar Lake: Hammond, *mapped*, DGER

Coupeville: Polenz and others, 2005, DGER GM-58

Cowlitz Falls: Evarts and Ashley, 1993, USGS GQ-1682

Crescent Harbor: Dragovich and others, 2005, DGER GM-59

Cumberland: Gower and Wanek, 1963, DGER GM-2

Cumberland: Vine, 1969, USGS PP 624

The Dalles North: *in prep.*, USGS

Darrington: Dragovich and others, 2002, DGER OFR 2002-7

Dartford: Derkey and others, 1998, DGER OFR 98-6

Deep Lake: Yates and Ford, 1960, USGS MF-237

Deer Island: Evarts, 2002, USGS MF-2392

Deer Park: Derkey and others, 2005, DGER GM-54

Deming: Dragovich and others, 1997, DGER OFR 97-2

Des Moines: Waldron, 1962, USGS GQ-159

Des Moines: Booth and Waldron, 2004, USGS SIM-2855

Doris: Powell, *in prep.*, DGER [mapping nearly completed]

Dry Bed Lakes (partial): Rau, 1966, DGER B53 [Satsop River]

Dungeness: Othberg and Palmer, 1979, DGER OFR 79-17

Duwamish Head: Waldron, 1967, USGS GQ-706

Duwamish Head (partial): Booth, 1991, USGS MF2161 [Vashon and Maury Islands]

Duwamish Head (partial): Haugerud, 2005, USGS OFR 2005-1387 [Bainbridge Island]

Duwamish Head: Troost and others, 2005, USGS OFR 2005-1252 [Seattle]

East Canyon Ridge: Swanson, 1994, USGS OFR 94-591

East Kittitas: Powell, *in prep.*, DGER [mapping nearly completed]

East Olympia: Walsh and Logan, 2005, DGER GM-56

Easton (partial): Walker, 1980, DGER OFR 80-1 [Roslyn-Cle Elum]

Easton: Hammond, *mapped*, DGER

Echo Valley: Mills and others, 1985, DGER OFR 85-7

Ediz Hook: Schasse and others, 2004, DGER OFR 2004-13

Edmonds East: Minard, 1983, USGS MF-1541

Edmonds East: Smith, 1975, DGER GM-14

Edmonds East: Cox, *in prep.*, USGS

Edmonds West: Smith, 1975, DGER GM-14

Edmonds West (part): Minard, 1983, USGS MF-1541

Edmonds West: Cox, *in prep.*, USGS

Elberton: Bush and others, 2005, UI OFR?

Eldon: Contreras and others, 2012, DGER MS 2012-03

Elephant Mountain: Powell, *proposed*, DGER [update of 1:48,000-scale mapping]

Elk Mountain: Evarts and Ashley, 1992, USGS OFR 92-362

Elwha: Polenz and others, 2004, DGER OFR 2004-14

Emerson Nipple: Goff, 1981, RHO-BWI C-21 [eastern Umtanum Ridge]

Everett: Smith, 1976, DGER GM-20

Everett: Minard, 1981, USGS OFR 81-248

Everett: Minard, 1985, USGS MF-1748

Fall City: Dragovich and others, 2007, DGER GM-67

False Bay: Dethier and others, 1996, DGER OFR 96-7

Forest Center: McLucas, 1980, DGER OFR 80-3

Fortson: Dragovich and others, 2002, DGER OFR 2002-6

Four Lakes: Hamilton and others, 2004, DGER OFR 2004-2

Four Mound Prairie: Derkey and Hamilton, 2007, DGER GM-66

Fox Island: Logan and others, 2006, DGER GM-63

Freeland: Polenz and others, 2006, DGER GM-64

Fiedlander Meadows (partial): Smith, 1991, DGER OFR 91-4 [Ninemile Creek-Wilmont Creek-Hunters Creek]

French Butte: Swanson, 1989, USGS OFR 89-309

Friday Harbor: Dethier and others, 1996, DGER OFR 96-7

Frosty Meadows (partial): Smith, 1991, DGER OFR 91-4 [Ninemile Creek-Wilmont Creek-Hunters Creek]

Gable Butte (partial): Fecht, 1978, RHO-BWI-LD-5 [Gable Mountain-Gable Butte area]

Gardiner (partial): Gayer, 1976, DGER OFR 76-21 [northeastern Jefferson County]

Gardiner (partial): Othberg and Palmer, 1979, DGER OFR 79-19

Gig Harbor (partial): Smith, 1977, DGER OFR 77-9 [Tacoma]

Gig Harbor (partial): Booth, 1991, USGS MF-2161 [Vashon and Maury Islands]

Gig Harbor (partial): Haugerud, 2005, USGS OFR 2005-1387 [Vashon and Maury Islands]

Gig Harbor: Booth and others, *in prep.*, USGS MF

Gilbert: Miller, 1987, DGER OFR 87-17

Gilbert: Dragovich and others, 1997, DGER GM-66

Ginkgo: Powell, *in prep.*, DGER [mapping nearly completed]

Goat Mountain: Evarts and Ashley, 1990, USGS OFR 90-632

Gold Mountain (partial): Smith, 1991, DGER OFR 91-4 [Ninemile Creek-Wilmont Creek-Hunters Creek]

Goose Prairie: Hammond, *mapped*, DGER

Grandview (partial): Campbell, 1977, DGER OFR 77-8 [Snipes Mountain]

Grandview [Grandview SW]: Geoscience Research Consultants, 1978, RHO-BWI-C-25 [SW Pasco Basin]

Grandview SE [Sagebrush Ridge]: Geoscience Research Consultants, 1978, RHO-BWI-C-25 [SW Pasco Basin]

Grandview SW [Grandview]: Geoscience Research Consultants, 1978, RHO-BWI-C-25 [SW Pasco Basin]

Granger (partial): Campbell, 1977, DGER OFR 77-8 [Snipes Mountain]

Granite Falls: Dragovich and others, *in press*, DGER

Greenacres: Derkey and others, 2004, DGER OFR 2004-11

Greenhorn Buttes: Swanson, 1989, USGS OFR 89309

Grisdale (partial): Rau, 1966, DGER B53 [Satsop River]

Haggerty Butte: Hildreth and Fierstein, 2015, USGS SIM 3315

Hamilton Buttes: Swanson, 1996, USGS OFR 96-16

Hanford (partial): Fecht, 1978, RHO-BWI-LD-5 [Gable Mountain-Gable Butte area]

Hansville (northern part): Polenz and others, 2006, DGER GM-64

Hansville (partial): Polenz and others, 2015 DGER MS 2015-02

Haystack Mountain [Clear Lake NE quadrangle]: Whetten and others, 1979, USGS OFR 79-1468

Hemlock Pass: *mapped*, USGS

Hobart: Vine, 1962, DGER GM-1

Hobart: Rosengreen, 1965, UW M.S. thesis

Hobart: Vine, 1969, USGS PP 624

Holly: Contreras and others, 2012, DGER OFR 2011-5

Hood River: *in prep.*, USGS

Hoodoo Peak: Miller, 1987, DGER OFR 87-17

Hoodsport: Polenz and others, 2012, DGER OFR 2011-3

Horn Rapids Dam: Geoscience Research Consultants, 1978, RHO-BWI-C-25 [SW Pasco Basin]

Hunters (partial): Smith, 1991, DGER OFR 91-4 [Ninemile Creek-Wilmont Creek-Hunters Creek]

Iowa Flats: Geoscience Research Consultants, 1978, RHO-BWI-C-25 [SW Pasco Basin]

Iowa Flats: Reidel, *in prep.*, Pacific Northwest National Laboratory

Issaquah: Booth and Minard, 1992, USGS MF-2206

Issaquah [east half of the Bellevue South 7.5' x 15' quadrangle]: Booth and others, 2012, USGS SIM 3211

Johnson Butte: Jones and Landon, 1978, RHO-BWI-LD-6

Juniper Beach: Schasse and others, 2009, DGER GM-70

Kachess Lake (partial): Walker, 1980, DGER OFR 80-1 [Roslyn-Cle Elum]

Kalama: *in prep.*, USGS

Keller (partial): Smith, 1991, DGER OFR 91-4 [Ninemile Creek-Wilmont Creek-Hunters Creek]

Kelso: Livingston, 1966, DGER Bulletin 54

Kendall: Dragovich and others, 1997, DGER OFR 97-2

Kennewick: Jones and Landon, 1978, RHO-BWI-LD-6

Kettle Falls: Mills, 1985, DGER GM-32

Kewa (partial): Smith, 1991, DGER OFR 91-4 [Ninemile Creek-Wilmont Creek-Hunters Creek]

Kirkland: Minard, 1983, USGS MF-1543

Kirkland: Booth and Troost, *in prep.*, USGS SIM

*Kittitas: Powell, *in prep.*, DGER [mapping of southwest portion of quad nearly completed]

Kusshi Creek: Hildreth and Fierstein, 2015, USGS SIM 3315

La Conner: Artim and Wunder, DGER OFR 76-1

La Conner: Dragovich and others, 2000, DGER OFR 2000-6

Lacamas Creek: Evarts, 2006, USGS SIM 2924

Lacey: Logan and others, 2003, DGER OFR 2003-9

Lake Chaplain: Dragovich and others, 2014, DGER MS 2014-01

Lake Joy: Dragovich and others, 2012, DGER MS 2012-01

Lake Roesiger: Dragovich and others, 2015, DGER MS 2015-01

Lake Stevens: Minard, 1980, USGS OFR 80-463

Lake Stevens: Minard, 1985, USGS MF-1742 Lake Whatcom: Haugerud, *in prep.*, USGS

Lake Wooten: O'Neal, 2004, UW unpub. map

Lake Wooten: Derkey and others, 2009, DGER OFR 2009-5

Lakeview Peak: Evarts and Ashley, 1991, USGS OFR 91-289

Langley: Schasse and others, 2009, DGER GM-69

Lawrence: Haugerud, *in prep.*, USGS

Leadpoint: Yates and Robertson, 1958, USGS MF-137

Leavenworth [Chiwaukum 4 SW]: Whetten, 1980, USGS OFR 80-616

Lester: Hammond, *mapped*, DGER

Liberty Lake: Derkey and others, 2004, DGER OFR 2004-12

Lilliwaup: O'Neal, 2004, UW unpub. map

Lilliwaup: Contreras and others, 2010, DGER OFR 2010-4

Littlerock: Polenz and others, *in prep.*, DGER

Lofall (partial): Hanson, 1976, DGER OFR 76-20

Lofall: Contreras and others, 2013, DGER MS 201303

Logy Creek Falls: Hildreth and Fierstein, 2015, USGS SIM 3315

Logy Creek NE: Hildreth and Fierstein, 2015, USGS SIM 3315

Logy Creek SW: Hildreth and Fierstein, 2015, USGS SIM 3315

Longbranch: Logan and others, 2003, DGER OFR 2003-21

Lookout Mountain (partial): Czajkowski and others, 2014, DGER OFR 2014-01

Louie Creek (partial): Smith, 1991, DGER OFR 91-4 [Ninemile Creek–Wilmont Creek–Hunters Creek]

Luna Butte: *in prep.*, USGS

Lyle: *in prep.*, USGS

Lyman: Dragovich and others, 1999, DGER OFR 99-3

Mabton East (partial): Hagood, 1986, RHO-BW-SA-344 P [Horse Heaven Hills]

Maiden Spring: Geoscience Research Consultants, 1978, RHO-BWI-C-25 [SW Pasco Basin]

Makah Bay: Snavelly and others, 1989, USGS OFR OF-89-141 [Cape Flattery and Cape Alava]

Maltby (partial): Capps and others, 1973, DGER OFR 73-1 [southern Snohomish County]

Maltby: Minard, 1981, USGS OFR 81-100

Maltby: Minard, 1985, USGS MF-1746

Maltby: Allen and others, *in prep.*, DGER

Manastash Lake: Hammond, 2010, DGER GM-76

Maple Valley: Vine, 1962, DGER GM-1

Maple Valley: Rosengreen, 1965, UW M.S. thesis

Maple Valley: Vine, 1969, USGS PP 624

Maple Valley: Booth, 1995, USGS MF-2297

Marcus: Mills, 1985, DGER GM-32

Marcus: Kiver and Stradling, 1987, U.S. Bureau of Reclamation

Martin Peak: Miller, 1987, DGER OFR 87-17

Marysville: Minard, 1980, USGS OFR 80-464

Marysville: Minard, 1985, USGS MF-1743

Mason Lake: Derkey and others, 2009, DGER OFR 2009-6

Matlock (partial): Rau, 1966, DGER B53 [Satsop River]

Maxwelton: Dethier and others, 1982, USGS OFR 82-192

Maxwelton: Cox, *in prep.*, USGS

Maytown: Logan and others, 2009, DGER GM-72

McAlester Mountain: Miller, 1987, DGER OFR 87-17

McCoy Peak: Swanson, 1992, USGS OFR 92-336

McDonald Spring: Powell, *in prep.*, DGER [mapping nearly completed]

McGregor Mountain: Miller, 1987, DGER OFR 87-17

McKays Butte: Hildreth and Fierstein, 2015, USGS SIM 3315

McMurray [Clear Lake SW]: Dethier and Whetten, 1980, USGS OFR 80-825

McMurray: Dragovich and DeOme, 2006, DGER GM-61

McNeil Island: Walsh and others, 2003, DGER OFR 2003-22

Mead: Derkey, 1997, DGER OFR 97-3

Meeks Table: Hammond, 2009, DGER GM-74

Mercer Island: Booth and Troost, *in prep.*, USGS SIM

Midnight Mountain: Miller, 1987, DGER OFR 87-17

Miller Mountain (partial): Smith, 1991, DGER OFR 91-4 [Ninemile Creek–Wilmont Creek–Hunters Creek]

Monitor: Gresens, 1983, DGER Bulletin 75

Monroe (partial): Capps and others, 1973, DGER OFR 73-1 [southern Snohomish County]

Monroe: Dragovich and others, 2011, DGER OFR 2011-1

Morse Creek: Schasse and Polenz, 2002, DGER OFR 2002-8

Moscow West: Bush and others, 1998, IGS GM-23

Moses Lake North: Grolier and Foxworthy, 1961, USGS I-330

Mount Clifty: Hammond, *mapped*, DGER

Mount Defiance: *in prep.*, USGS

Mount Defiance (partial): Czajkowski and others, 2014, DGER OFR 2014-01

Mount Higgins: Dragovich and others, 2003, DGER OFR 2003-12

Mount Vernon: Dethier and Whetten, USGS OFR 81105

Mount Walker (partial): Hanson, 1976, DGER OFR 76-20 [Uncas–Port Ludlow]

Mukilteo: Smith, 1976, DGER GM-20

Mukilteo: Minard, 1982, USGS MF-1438

Mukilteo: Cox and Molinari, *in prep.*, USGS

Multnomah Falls: USGS, *mapped*, USGS

Newman Lake: Derkey and others, 2004, DGER OFR 2004-12

Nile (western two-thirds): Hammond, 2009, DGER GM-74

Nine Canyon: Jones and Landon, 1978, RHO-BWI-LD-6

Nine Mile Falls: Derkey and others, 2003, DGER OFR 2003-8

Ninemile Flat (partial): Smith, 1991, DGER OFR 91-4 [Ninemile Creek–Wilmont Creek–Hunters Creek]

Nisqually: Walsh and others, 2003, DGER OFR 2003-10

Noble Knob: Hammond, *mapped*, DGER

Nordland (partial): Gayer, 1976, DGER OFR 76-21 [northeastern Jefferson County]

Norse Peak: Hammond, *mapped*, DGER

North Bend: Dragovich and others, 2009, DGER GM-73

Oak Harbor: Dragovich and others, 2005, DGER GM-59

Ollala (partial): Booth, 1991, USGS MF-2161 [Vashon and Maury Islands]

Olalla: Booth and Troost, 2005, USGS SIM-2902

Old Scab Mountain: Hammond, *mapped*, DGER

Olsen Canyon: Derkey and Hamilton, 2009, DGER GM-71

Orchards: Evarts and O'Connor, *in prep.*, USGS

Orting: Crandell, 1961, USGS OFR 61-35

Orting: Crandell, 1963, USGS PP 388-A [Lake Tapps 15' quadrangle]

Orting (partial): Gard, 1968, USGS PP 388-B [Lake Tapps 15' quadrangle]

Oso: Dragovich and others, 2003, DGER OFR 2003-11

Outlet Falls: Hildreth and Fierstein, 2015, USGS SIM 3315

Oval Peak: Miller, 1987, DGER OFR 87-17

Ozette: Snavelly and others, 1989, USGS OFR OF-89-141 [Cape Flattery and Cape Alava]

Packwood: Swanson and others, 1997, USGS OFR 97-157

Packwood Lake: Swanson, 1996, USGS OFR 96-704

Palouse: Duncan and Bush, 1999, IGS TR 99-7

Palouse: Bush and others, 2005, University of Idaho?

Pasco: Jones and Landon, 1978, RHO-BWI-LD-6

Peshastin [Chiwaukum 4 SE]: Whetten, 1980, USGS OFR 80-723

Poland Butte: Hildreth and Fierstein, 2015, USGS SIM 3315

Pomona (partial): Campbell, 1976, DGER OFR 76-11 [Yakima]

Pomona (partial): Campbell, 1977, DGER OFR 77-7 [Selah]

Pomona: Powell, *proposed*, DGER [update of 1:48,000-scale mapping]

Port Angeles: Schasse and others, 2004, DGER OFR 2004-13

Port Gamble: Cox, *in prep.*, USGS

Port Ludlow (partial): Hanson, 1976, DGER OFR 76-20 [Uncas–Port Ludlow]

Port Ludlow (partial): Gayer, 1976, DGER OFR 76-21 [northeastern Jefferson County]

Port Ludlow: Polenz and others, 2015, DGER MS 2015-02

Port Townsend North (partial): Gayer, 1976, DGER OFR 76-21 [northeastern Jefferson County]

Port Townsend North (partial): Polenz and others, 2005, DGER GM-58

Port Townsend North (partial): Schasse and Slaughter, 2005, DGER GM-57

Port Townsend South (partial): Gayer, 1976, DGER OFR 76-21 [northeastern Jefferson County]

Port Townsend South: Schasse and Slaughter, 2005, DGER GM-57

Portland: Beeson and others, 1991, GMS-75 **Pothole:** Minard, 1985, USGS MF-1680.

Poulsbo: Polenz and others, 2013, DGER MS 2013-02

Poverty Bay: Waldron, 1961, USGS GQ-158

Poverty Bay (Pierce Co. portion): Smith, 1976, DGER OFR 76-9 [northeast Tacoma]

Poverty Bay (partial): Smith, 1977, DGER OFR 77-9 [Tacoma]

Poverty Bay: Booth and others, 2004, USGS SIM 2854

Priest Rapids: Goff, 1981, RHO-BWI C-21 [eastern Umtanum Ridge]

Priest Rapids: Powell, *in prep.*, DGER [mapping partially completed]

Prince Creek: Miller, 1987, DGER OFR 87-17

Prosser (partial): Hagood, 1986, RHO-BW-SA-344 P [Horse Heaven Hills]

Pullman: Bush and Garwood, 2005, UI?

Puyallup: Troost, *in press*, USGS OFR

Quartz Mountain: Hammond, *mapped*, DGER

Quilcene (partial): Hanson, 1976, DGER OFR 76-20 [Uncas–Port Ludlow]

Quilcene: Contreras and others, 2014, DGER MS 2014-03

Raven Roost: Hammond, *mapped*, DGER

Redmond: Minard and Booth, 1988, USGS MF-2016

Redmond: Booth and Troost, *in prep.*, USGS SIM

Red Top Mountain (partial): Walker, 1980, DGER OFR 80-1 [Roslyn–Cle Elum]

Renton: Mullineaux, 1961, USGS OFR-61-110

Renton: Mullineaux, 1965, USGS GQ-405

Richardson: Dethier and others, 1996, DGER OFR 96-7

Richland: Geoscience Research Consultants, 1978, RHO-BWI-C-25 [SW Pasco Basin]

Richland NE: Geoscience Research Consultants, 1978, RHO-BWI-C-25 [SW Pasco Basin]

Ridgefield: Evarts, 2004, USGS SIM 2844

Rimrock Lake (northern portion): Hammond, *in prep.*, DGER GM?

Riverland (partial): Fecht, 1978, RHO-BWI-LD-5 [Gable Mountain–Gable Butte area]

Riverland (partial): Goff, 1981, RHO-BWI C-21 [eastern Umtanum Ridge]

Ronald (partial): Walker, 1980, DGER OFR 80-1 [Roslyn–Cle Elum]

Sagebrush Ridge [Grandview SE]: Geoscience Research Consultants, 1978, RHO-BWI-C-25 [SW Pasco Basin]

Saint Helens: Evarts, 2004, USGS SIM-2834 Satus Pass: Anderson?, *in prep.*, USGS Sauvie Island: *in prep.*, USGS

Savage Island: Fecht, 1978, RHO-BWI-LD-5 [Gable Mountain–Gable Butte area]

Seabeck: Polenz and others, 2013, DGER MS 2012-02

Seattle NE [Seattle North]: Troost and others, 2009, USGS SIM 3065 [northeastern Seattle]

Seattle NW [Shilshole Bay]: Booth and others, 2005, USGS SIM-2903 [northwestern Seattle]

Seattle North: Troost and others, 2005, USGS OFR 2005-1252 [Seattle]

Seattle North: Booth and others, 2009, USGS SIM 3065 [northeastern Seattle]

Seattle South: Troost and others, 2005, USGS OFR 2005-1252 [Seattle]

Sedro-Woolley North: Dragovich and others, 1999, DGER OFR 99-3

Sedro-Woolley South [Clear Lake NW]: Whetten and others, 1980, USGS OFR 80-247

Selah (partial): Campbell, 1976, DGER OFR 76-11 [Yakima]

Selah (partial): Campbell, 1977, DGER OFR 77-7 [Selah]

Selah Springs: Powell, *proposed*, DG ER [update of 1:48,000-scale mapping]

Sequim: Othberg and Palmer, 1979, DGER OFR 79-18

Sequim: Schasse and Logan, 1998, DGER OFR 98-7

Shaw Island: Dethier and others, 1996, DGER OFR 96-7

Shelton: Schasse and others, 2003, DGER OFR 2003-24

Shelton Valley: Polenz and others, *in press*, DGER

Shilshole Bay (partial): Haugerud, 2005, USGS OFR 2005-1387 [Bainbridge Island]

Shilshole Bay: Troost and others, 2005, USGS OFR 2005-1252 [Seattle]

Shilshole Bay: Booth and others, 2005, USGS SIM-2903 [northwestern Seattle]

Signal Peak: Hildreth and Fierstein, 2015, USGS SIM 3315

Silcott Island (partial): Alloway and others, 2013, GSA SP 497

Silver Lake: Evarts, 2001, USGS MF-2371

Skokomish Valley: Polenz and others, 2010, DGER OFR 2010-3

Smith Island: Dragovich and others, 2005, DGER GM-59

Smyrna (south half): Reidel, 1978, RHO-BWI-LD-4

Snipes Creek: Geoscience Research Consultants, 1978, RHO-BWI-C-25 [SW Pasco Basin]

Snively Basin: Geoscience Research Consultants, 1978, RHO-BWI-C-25 [SW Pasco Basin]

Snohomish (partial): Capps and others, 1973, DGER OFR 73-1 [southern Snohomish County]

Snohomish: Minard, 1980, USGS OFR 80-2013

Snohomish: Minard, 1985, USGS MF-1745

Snoqualmie: Dragovich and others, 2009, DGER GM-75

Spiral Butte: Clayton, 1980, DGER OFR 80-8

Spiral Butte: Clayton, 1980, DGER OFR 81-3

Spiral Butte: Hammond, *mapped*, DGER

Spirit (partial): Yates, 1961, USGS OFR 61-175 [Map I-412]

Spirit Lake East: Evarts and Ashley, 1993, USGS GQ-1679

Spirit Lake West: Evarts and Ashley, 1993, USGS GQ-1681

Spokane Northeast: Derkey and others, 1999, DGER OFR 99-6

Spokane Northwest: Derkey and others, 2004, DGER OFR 2004-3

Spokane Southeast: Derkey and others, 1999, DGER OFR 99-6

Spokane Southwest: Hamilton and others, 2004, DGER OFR 2004-4

Springdale: McLucas, 1980, DGER OFR 80-3

Squaxin Island: Logan and others, 2003, DGER OFR 2003-23

Stabler (partial): Czajkowski and others, 2014, DGER OFR 2014-01

Stacker Butte: Anderson, *in prep.*, USGS

Stagman Butte: Hildreth and Fierstein, 2015, USGS SIM 3315

Stanwood: Minard, 1980, USGS OFR 80-462

Stanwood: Minard, 1985, USGS MF-1741

Stehekin: Miller, 1987, DGER OFR 87-17

Steilacoom (partial): Smith, 1977, DGER OFR 77-9 [Tacoma]

Steilacoom: Troost and others, *in prep.*, USGS OFR

Stensgar Mountain: Evans, 1982, USGS OFR 82-492

Stensgar Mountain: Evans, 1987, USGS B 1679

Stimson Hill [Clear Lake SE]: Dethier and others, 1980, USGS OFR 80-303

Stimson Hill: Dragovich and others, 2004, DGER OFR 2004-9

Sulphur Spring: Geoscience Research Consultants, 1978, RHO-BWI-C-25 [SW Pasco Basin]

Sultan: Dragovich and others, 2013, DGER MS 201301

Summit Lake: Logan and Walsh, 2004, DGER OFR 2004-10

Summer: Crandell, 1961, USGS OFR 61-36

Summer: Crandell, 1963, USGS PP 388-A [Lake Tapps 15' quadrangle]

Sun Mountain: Miller, 1987, DGER OFR 87-17

Sunnyside (partial): Campbell, 1977, DGER OFR 77-8 [Snipes Mountain]

Sun Top: Hammond, *mapped*, DGER

Suquamish (partial): Haugerud, 2005, USGS OFR 2005-1387 [Bainbridge Island]

Suquamish: Haugerud and Troost, 2011, USGS SIM 3181

Tacoma: Smith, 1977, DGER OFR 77-9 (parts of Poverty Bay, Tacoma North, Tacoma South, Gig Harbor, and Steilacoom 7.5' quadrangles)

Tacoma North: Smith, 1976, DGER OFR 76-9 (northeast Tacoma)

Tacoma North (partial): Booth, 1991, USGS MF-2161 [Vashon and Maury Islands]

Tacoma North: Troost and Booth, *in press*, USGS OFR

Tacoma South: Troost, *in prep.*, USGS

Teanaway (partial): Walker, 1980, DGER OFR 80-1 [Roslyn–Cle Elum]

Termination Point (partial): Czajkowski and others, 2014, DGER OFR 2014-01

Tieton Basin (northern portion): Hammond, *in prep.*, DGER GM?

Timberwolf Mountain: Hammond, 2005, DGER GM-60

Toutle: *mapped*, USGS

Toutle Mountain: *mapped*, USGS

Tower Rock: Swanson, 1991, USGS OFR 91-314

Tulalip: Minard, 1980, USGS OFR 80-465

Tulalip: Minard, 1985, USGS MF-1744

Tulalip (western part): Schasse and others, 2009,

DGER GM-69

Tumwater: Walsh and others, 2003, DGER OFR 2003-25

Twin Buttes: Hildreth and Fierstein, 2015, USGS SIM 3315

Uncas (partial): Hanson, 1976, DGER OFR 76-20 [Uncas–Port Ludlow]

Uncas (partial): Gayer, 1976, DGER OFR 76-21 [northeastern Jefferson County]

Uncas: Haeussler and others, 1999, USGS OFR 99-421

Uncas: Tabor and others, 2011, USGS SIM 3160

Union: Polenz and others, 2010, DGER OFR 2010-3

Utsalady: Wunder, 1976, DGER OFR 76-10

Utsalady: Dragovich and others, 2002, DGER OFR 2002-5

Van Creek [Chiwaukum 4 NW]: Whetten and Laravie, 1976, USGS MF-794

Vancouver: Evarts and O'Connor, *in prep.*, USGS

Vanson Peak: Evarts and Ashley, 1993, USGS GQ1680

Vantage: Powell, *in prep.*, DGER [mapping of west half of quad nearly completed]

Vashon: Booth, 1995, USGS MF-2161

Vashon: Troost, *in press*, USGS

Vaughn: Logan and Walsh, 2007, DGER GM-65

Viola: Bush and Provant, 1998, IGS GM-25

Walla Walla: Derkey and others, 2006, DGER GM-62

Washougal: *in press*, USGS

Webber Canyon: Geoscience Research Consultants, 1978, RHO-BWI-C-25 [SW Pasco Basin]

Webber Canyon (partial): Hagood, 1986, RHO-BW-SA-344 P [Horse Heaven Hills]

Weddle Canyon (northern portion): Hammond, *in prep.*, DGER GM?

Wenatchee: Gresens, 1983, DGER Bulletin 75

Wiley City (partial): Campbell, 1976, DGER OFR 76-11 [Yakima]

White Pass: Clayton, 1980, DGER OFR 80-8

White Pass: Clayton, 1980, DGER OFR 81-3
White Pass: Hammond, *mapped*, DGER

White Pine Buttes [Goldendale 15' quadrangle]: Anderson, 1987, rev. 1988, DGER OFR 87-15

White River Park: Hammond, *mapped*, DGER

White Salmon: *in prep.*, USGS

Whitstran: Geoscience Research Consultants, 1978, RHO-BWI-C-25 [SW Pasco Basin]

Whitstran (partial): Hagood, 1986, RHO-BW-SA344 P [Horse Heaven Hills]

Whitstran NE: Geoscience Research Consultants, 1978, RHO-BWI-C-25 [SW Pasco Basin]

Whitstran NE (partial): Hagood, 1986, RHO-BW-SA-344 P [Horse Heaven Hills]

Wildcat Lake: Haeussler and Clark, 2000, USGS OFR 00-356

Wildcat Lake: Tabor and others, 2011, USGS SIM 3187

Wilkeson: Crandell, 1961, USGS OFR 61-37

Wilkeson: Crandell, 1963, USGS PP 388-A [Lake Tapps 15' quadrangle]

Wilkeson: Gard, 1968, USGS PP 388-B [Lake Tapps 15' quadrangle]

Winton [Chiwaukum 4 NW]: Whetten, 1980, USGS OFR 80-456,

Wolf Point: *mapped*, USGS

Wooded Island [Richland NE]: Geoscience Research Consultants, 1978, RHO-BWI-C-25 [SW Pasco Basin]

Woodland: Evarts, 2004, USGS SIM-2827

Wymer: Powell, *in prep.*, DGER [mapping nearly completed]

Wynoochee Valley NE (partial): Rau, 1966, DGER B53 [Satsop River]

Yacolt: Evarts, 2006, USGS SIM 2901

Yakima East (partial): Campbell, 1976, DGER OFR 76-11 [Yakima]

Yakima West (partial): Campbell, 1976, DGER OFR 76-11 [Yakima]

PUBLISHED AND IN-PROGRESS 7.5-MINUTE QUADRANGLES IN WASHINGTON BY

AUTHOR

The list below is in alphabetical order by author name and gives the author(s), year published, title, publisher, series, series number, number of sheets/pagination, scale, and URL.

- Alloway, M. R.; Watkinson, A. J.; Reidel, S. P., 2013, A serial cross-section analysis of the Lewiston Structure, Clarkston, Washington, and implications for the evolution of the Lewiston Basin, *IN*, Reidel, S. P.; Camp, V. E.; Ross, M. E.; Wolff, J. A.; Martin, B.S.; Tolan, T. L.; Wells, R. E., 2013, The Columbia River flood basalt province: Geological Society of America Special Paper 497, 440 p.
- Artim, E. R.; Wunder, J. M., 1976, Preliminary geologic map of the La Conner quadrangle in Skagit County, Washington: Washington Division of Geology and Earth Resources Open File Report 76-1, 1 sheet, scale 1:24,000. [http://ngmdb.usgs.gov/Prodesc/proddesc_30670.htm]
- Beeson, M. H.; Tolan, T. L.; Madin, I. P., 1991, Geologic map of the Portland quadrangle, Multnomah and Washington Counties, Oregon, and Clark County, Washington: Oregon Department of Geology and Mineral Industries Geological Map Series GMS-75, 1 sheet, scale 1:24,000. [<http://www.oregongeology.org/pubs/GMS/gms075.pdf>]
- Booth, D. B., 1991, Geologic map of Vashon and Maury Islands [Vashon and part of Duwamish Head, Gig Harbor, Ollala, and Tacoma North 7½' quadrangles], King County, Washington: U.S. Geological Survey Miscellaneous Field Studies Map MF-2161, 1 sheet, scale 1:24,000. [http://ngmdb.usgs.gov/Prodesc/proddesc_5790.htm]
- Booth, D. B., 1995, Surficial geologic map of the Maple Valley quadrangle, King County, Washington: U.S. Geological Survey Miscellaneous Field Studies Map MF-2297, 1 sheet, scale 1:24,000. [http://ngmdb.usgs.gov/Prodesc/proddesc_5917.htm]
- Booth, D. B.; Minard, J. P., 1992, Geologic map of the Issaquah 7.5' quadrangle, King County, Washington: U.S. Geological Survey Miscellaneous Field Studies Map MF-2206, 1 sheet, scale 1:24,000. [http://ngmdb.usgs.gov/Prodesc/proddesc_5838.htm]
- Booth, D. B.; Troost, K. G., 2005, Geologic map of the Olalla 7.5' quadrangle, King, Kitsap, and Pierce Counties, Washington: U.S. Geological Survey Scientific Investigations Map SIM 2902, 1 sheet, scale 1:24,000. [http://ngmdb.usgs.gov/Prodesc/proddesc_73970.htm]
- Booth, D. B.; Troost, K. G.; Schimel, S. A., 2009, Geologic map of northeastern Seattle (part of the Seattle North 7½' x 15' quadrangle) [Seattle North 7½' quadrangle], King County: U.S. Geological Survey Scientific Investigations Map 3065, 1 sheet, scale 1:12,000. [<http://pubs.usgs.gov/sim/065/>]
- Booth, D. B.; Troost, K. G.; Schimel, S. A., 2005, Geologic map of northwestern Seattle (part of the Seattle North 7½' x 15' quadrangle) [Shilshole Bay 7½' quadrangle], King County, Washington: U.S. Geological Survey Scientific Investigations Map SIM-2903, 1 sheet, scale 1:12,000. [<http://pubs.usgs.gov/sim/2005/2903/>]
- Booth, D. B.; Waldron, H. H., 2004, Geologic map of the Des Moines 7.5' quadrangle, King County, Washington: U.S. Geological Survey Scientific Investigations Map SIM 2855, 1 sheet, scale 1:24,000. [http://ngmdb.usgs.gov/Prodesc/proddesc_70026.htm]
- Booth, D. B.; Waldron, H. H.; Troost, K. G., 2004, Geologic map of the Poverty Bay 7.5' quadrangle, King and Pierce Counties, Washington: U.S. Geological Survey Scientific Investigations Map 2854, 1 sheet, scale 1:24,000. [http://ngmdb.usgs.gov/Prodesc/proddesc_70024.htm]
- Booth, D. B.; Walsh, T. J.; Troost, K. G.; Shimmel, S. A., 2012, Geologic map of the east half of the Bellevue South 7½' x 15' quadrangle, Issaquah area, King County, Washington [Issaquah 7½' quadrangle]: U.S. Geological Survey Scientific Investigations Map 3211, 1 sheet, scale 1:24,000. [http://ngmdb.usgs.gov/Prodesc/proddesc_97427.htm]
- Bush, J. H.; Duncan, C. H.; Garwood, D. L., compilers, 2005, Bedrock geologic map of the Palouse 7.5 minute quadrangle, Washington–Idaho: University of Idaho?, 1 sheet, scale 1:24,000. [<http://www.webs.uidaho.edu/pbac/GeologicMaps/palouse.pdf>]
- Bush, J. H.; Garwood, D. L., compilers, 2005, Bedrock geologic map of the Albion 7.5 minute quadrangle, Washington: University of Idaho?, 1 sheet, scale 1:24,000. [<http://www.webs.uidaho.edu/pbac/GeologicMaps/albion.pdf>]
- Bush, J. H.; Garwood, D. L., compilers, 2005, Bedrock geologic map of the Pullman 7.5 minute quadrangle, Washington: University of Idaho?, 1 sheet, scale 1:24,000. [<http://www.webs.uidaho.edu/pbac/GeologicMaps/pullman.pdf>]
- Bush, J. H.; Garwood, D. L.; Halver, B. A., compilers, 2005, Bedrock geologic map of the Elberton 7.5 minute quadrangle, Washington: University of Idaho?, 1 sheet, scale 1:24,000. [<http://www.webs.uidaho.edu/pbac/GeologicMaps/elberton.pdf>]
- Bush, J. H.; Garwood, D. L.; Oakley, W. L., III, compilers, 2005, Bedrock geologic map of the Colfax North 7.5 minute quadrangle, Washington: University of Idaho?, 1 sheet, scale 1:24,000. [http://www.webs.uidaho.edu/pbac/GeologicMaps/colfax_north.pdf]
- Bush, J. H.; Provant, A. P., 1998, Bedrock geologic map of the Viola quadrangle, Latah County, Idaho and Whitman County, Washington: Idaho Geological Survey Geologic Map 25, 1 sheet, scale 1:24,000. [<http://www.webs.uidaho.edu/pbac/GeologicMaps/Viola.pdf>]
- Bush, J. H.; Provant, A. P.; Gill, S. W., 1998, Bedrock geologic map of the Moscow West quadrangle, Latah County, Idaho and Whitman County, Washington: Idaho Geological Survey Geologic Map 23, 1 sheet, scale 1:24,000. [http://www.webs.uidaho.edu/pbac/GeologicMaps/Moscow_West.pdf]
- Campbell, N. P., 1976, Geologic map of the Yakima area [part of Pomona, Selah, Wiley City, Yakima East, and Yakima West 7.5-minute quadrangles]: Washington Division of Geology and Earth Resources Open File Report 76-11, scale 1:24,000, 1 sheet, scale 1:24,000. [http://www.dnr.wa.gov/Publications/ger_ofr76-11_geologic_map_yakima_24k.pdf]
- Campbell, N. P., 1977, Geology of the Selah area [part of Pomona and Selah 7½' quadrangles], Yakima County, Washington: Washington Division of Geology and Earth Resources Open File Report 77-7, 3 sheets, scale 1:24,000. [http://www.dnr.wa.gov/Publications/ger_ofr77-7_geology_hazards_selah_24k.pdf]
- Campbell, N. P., 1977, Geology of the Snipes Mountain area [part of Grandview, Granger, and Sunnyside 7½' quadrangles], Yakima County, Washington: Washington Division of Geology and Earth Resources Open File Report 77-8, 3 sheets, scale 1:24,000. [http://www.dnr.wa.gov/Publications/ger_ofr77-8_geology_hazards_snipes_mtn_24k.pdf]
- Capps, Gerald; Simmons, J. D.; Videgar, F. D., 1973, Preliminary report on the geology of southern Snohomish County [part of Bothell, Maltby, Monroe, and Snohomish 7½' quadrangles], Washington: Washington Division of Geology and Earth Resources Open File Report 73-1, 11 p., 8 plates [pl. 2], scale 1:24,000. [http://www.dnr.wa.gov/Publications/ger_ofr73-1_geology_south_snohomish_co_pt2.pdf]
- Carrara, P. E., 1990, Preliminary surficial geologic map of the Chewelah quadrangle, Stevens County, Washington: U.S. Geological Survey Miscellaneous Field Studies Map MF-2141, 1 sheet, scale 1:24,000. [http://ngmdb.usgs.gov/Prodesc/proddesc_5758.htm]
- Carson, R. J., 1976, Preliminary geologic map of the Brinnon area, Jefferson County, Washington: Washington Division of Geology and Earth Resources Open File Report 76-3, 1 sheet, scale 1:24,000. [http://www.dnr.wa.gov/Publications/ger_ofr76-3_geol_map_brinnon_24k.pdf]
- Clark, L. D.; Miller, F. K., 1965, Preliminary geologic map of the Chewelah district [part of Chewelah 7½' quadrangle], Stevens County, Washington: U.S. Geological Survey, Open-File Report OF-6532, 3 sheets, scale 1:24,000. [http://ngmdb.usgs.gov/Prodesc/proddesc_8101.htm]
- Clayton, G. A., 1980, Geology of the White Pass-Tumac Mountain area, Washington [White Pass and Spiral Butte 7½' quadrangles]. *In* Korosec, M. A.; Schuster, J. E.; and others, The 1979-1980 geothermal resource assessment program in Washington: Washington Division of Geology and Earth Resources Open File Report 81-3, p. 100116, 1 plate, scale 1:24,000. [http://www.dnr.wa.gov/publications/ger_ofr81-3_geothermal_resources_24k.pdf]
- Clayton, G. A., 1980, Geology of White Pass–Tumac Mountain area, Washington [White Pass and Spiral Butte 7½' quadrangles]: Washington Division of Geology and Earth Resources Open File Report 80-8, 1 sheet, scale 1:24,000. [http://www.dnr.wa.gov/Publications/ger_ofr80-8_white_pass_tumac_mtn_24k.pdf]
- Contreras, T. A.; Legorreta Paulin, Gabriel; Czajkowski, J. L.; Polenz, Michael; Logan, R. L.; Carson, R. J.; Mahan, S. A.; Walsh, T. J.; Johnson, C. N.; Skov, R. H., 2010, Geologic map of the Lilliwaup 7.5-minute quadrangle, Mason County, Washington: Washington Division of Geology and Earth Resources Open File Report 2010-4, 1 sheet, scale 1:24,000, with 13 p. text. [http://www.dnr.wa.gov/Publications/ger_ofr2010-4_geol_map_lilliwaup_24k.zip]
- Contreras, T. A.; Patton, A. I.; Legorreta Paulín, Gabriel; Hubert, I. J.; Cakir, Recep; Carson, R. J., 2014, Geologic map of the Quilcene 7.5-minute quadrangle, Jefferson County, Washington: Washington Division of Geology and Earth Resources Map Series 2014-03, 1 sheet, scale 1:24,000, 27 p. text. [<http://www.dnr.wa.gov/>]

- [publications/ger_ms2014-03_geol_map_quilcene_24k.zip\]](#)
- Contreras, T. A.; Spangler, Eleanor; Fusso, L. A.; Reioux, D. A.; Legorreta Paulin, Gabriel; Pringle, P. T.; Carson, R. J.; Lindstrum, E. F.; Clark, K. P.; Tepper, J. H.; Pileggi, Domenico; Mahan, S. A., 2012, Geologic map of the Eldon 7.5-minute quadrangle, Jefferson, Kitsap, and Mason Counties, Washington: Washington Division of Geology and Earth Resources Map Series 201203, 1 sheet, scale 1:24,000, 60 p. text. [http://www.dnr.wa.gov/Publications/ger_ms2012-03_geol_map_eldon_24k.zip]
- Contreras, T. A.; Stone, K. A.; Legorreta Paulin, Gabriel, 2013, Geologic map of the Lofall 7.5-minute quadrangle, Jefferson and Kitsap Counties, Washington: Washington Division of Geology and Earth Resources Map Series 2013-03, 1 sheet, scale 1:24,000, 19 p. text. [http://www.dnr.wa.gov/Publications/ger_ms2013-03_geol_map_lofall_24k.zip]
- Contreras, T. A.; Weeks, S. A.; Stanton, K. M. D.; Stanton, B. W.; Perry, B. B.; Walsh, T. J.; Carson, R. J.; Clark, K. P.; Mahan, S. A., 2012, Geologic map of the Holly 7.5-minute quadrangle, Jefferson, Kitsap, and Mason Counties, Washington: Washington Division of Geology and Earth Resources Open File Report 2011-5, 1 sheet, scale 1:24,000, 13 p. text. [http://www.dnr.wa.gov/Publications/ger_ofr2011-5_geol_map_holly_24k.zip]
- Crandell, D. R., 1961, Surficial geology of the Orting quadrangle, Washington: U.S. Geological Survey Open-File Report 61-35, 1 sheet, scale 1:24,000. (Superseded by USGS Professional Paper 388-A) [http://ngmdb.usgs.gov/Prodesc/proddesc_8002.htm]
- Crandell, D. R., 1961, Surficial geology of the Sumner quadrangle, Washington: U.S. Geological Survey Open-File Report 61-36, 1 sheet, scale 1:24,000. (Superseded by USGS Professional Paper 388-A) [http://ngmdb.usgs.gov/Prodesc/proddesc_8003.htm]
- Crandell, D. R., 1961, Surficial geology of the Wilkeson quadrangle, Washington: U.S. Geological Survey Open-File Report 61-37, 1 sheet, scale 1:24,000. (Superseded by USGS Professional Paper 388-A) [http://ngmdb.usgs.gov/Prodesc/proddesc_8004.htm]
- Crandell, D. R., 1963, Surficial geology and geomorphology of the Lake Tapps quadrangle [Buckley, Orting, Sumner, and Wilkeson 7½' quadrangles] Washington: U.S. Geological Survey Professional Paper 388-A, 84 p., 2 plates, scale 1:24,000. [http://ngmdb.usgs.gov/Prodesc/proddesc_4386.htm]
- Crandell, D. R.; Gard, L. M., Jr., 1959, Geology of the Buckley quadrangle, Washington: U.S. Geological Survey Geologic Quadrangle Map GQ-125, 1 sheet, scale 1:24,000. [superseded by Professional Paper 388-A] [http://ngmdb.usgs.gov/Prodesc/proddesc_571.htm]
- Czajkowski, J. L.; Bowman, J. D.; Fusso, L. A.; Boschmann, D. E., 2014 Geologic mapping and geothermal assessment of the Wind River Valley, Skamania County, Washington: Washington Division of Geology and Earth Resources Open File Report 2014-01, 30 p., 1 plate, scale 1:24,000. [http://www.dnr.wa.gov/publicaitons/ger_ofr2014-1_wind_river_geothermal.pdf]
- Derkey, R. E., 1997, Geologic map of the Mead 7.5-minute quadrangle, Spokane County, Washington: Washington Division of Geology and Earth Resources Open File Report 97-3, 9 p., 2 plates, scale 1:24,000. [http://www.dnr.wa.gov/Publications/ger_ofr97-3_geol_map_mead_24k.zip]
- Derkey, R. E.; Gerstel, W. J.; Logan, R. L., 1998, Geologic map of the Dartford 7.5-minute quadrangle, Spokane County, Washington: Washington Division of Geology and Earth Resources Open File Report 98-6, 9 p., 1 plate, scale 1:24,000. [http://www.dnr.wa.gov/Publications/ger_ofr98-6_geol_map_dartford_24k.zip]
- Derkey, R. E.; Hamilton, M. M., 2007, Geologic map of the Four Mound Prairie 7.5-minute quadrangle, Spokane and Stevens Counties, Washington: Washington Division of Geology and Earth Resources Geologic Map GM-66, 1 plate, scale 1:24,000. [http://www.dnr.wa.gov/Publications/ger_gm66_geol_map_fourmoundprairie_24k.pdf]
- Derkey, R. E.; Hamilton, M. M., 2009, Geologic map of the Olsen Canyon 7.5-minute quadrangle, Lincoln and Stevens Counties, Washington: Washington Division of Geology and Earth Resources Geologic Map GM-71, 1 sheet, scale 1:24,000. [http://www.dnr.wa.gov/Publications/ger_gm71_geol_map_olsencanyon_24k.pdf]
- Derkey, R. E.; Hamilton, M. M.; Stradling, D. F., 2003, Geologic map of the Nine Mile Falls 7.5-minute quadrangle, Spokane and Stevens Counties, Washington: Washington Division of Geology and Earth Resources Open File Report 2003-8, 1 sheet, scale 1:24,000. [http://www.dnr.wa.gov/Publications/ger_ofr2003-8_geol_map_ninemilefalls_24k.pdf]
- Derkey, R. E.; Hamilton, M. M.; Stradling, D. F., 2004, Geologic map of the Airway Heights 7.5-minute quadrangle, Spokane County, Washington: Washington Division of Geology and Earth Resources Open File Report 2004-1, 1 sheet, scale 1:24,000. [http://www.dnr.wa.gov/Publications/ger_ofr2004-1_geol_map_airwayheights_24k.pdf]
- Derkey, R. E.; Hamilton, M. M.; Stradling, D. F., 2004, Geologic map of the Greenacres 7.5-minute quadrangle, Spokane County, Washington: Washington Division of Geology and Earth Resources Open File Report 2004-11, 1 sheet, scale 1:24,000. [http://www.dnr.wa.gov/Publications/ger_ofr2004-11_geol_map_greenacres_24k.pdf]
- Derkey, R. E.; Hamilton, M. M.; Stradling, D. F., 2004, Geologic map of the Spokane Northwest 7.5-minute quadrangle, Spokane County, Washington: Washington Division of Geology and Earth Resources Open File Report 2004-3, 1 sheet, scale 1:24,000. [http://www.dnr.wa.gov/Publications/ger_ofr2004-3_geol_map_spokanenw_24k.pdf]
- Derkey, R. E.; Hamilton, M. M.; Stradling, D. F., 2004, Geologic map of the Washington portions of the Liberty Lake 7.5-minute quadrangle and the south half of the Newman Lake 7.5-minute quadrangle, Spokane County: Washington Division of Geology and Earth Resources Open File Report 2004-12, 1 sheet, scale 1:24,000. [http://www.dnr.wa.gov/Publications/ger_ofr2004-12_geol_map_libertylk_newmanlk_24k.pdf]
- Derkey, R. E.; Hamilton, M. M.; Stradling, D. F., 2005, Geologic map of the Deer Park 7.5-minute quadrangle, Spokane County, Washington: Washington Division of Geology and Earth Resources Geologic Map GM-54, 1 sheet, scale 1:24,000. [http://www.dnr.wa.gov/Publications/ger_gm54_geol_map_deerpark_24k.pdf]
- Derkey, R. E.; Hamilton, M. M.; Stradling, D. F.; Kiver, E. P., 1999, Preliminary geologic maps of the Spokane NE and SE 7.5-minute quadrangles, Spokane County, Washington: Washington Division of Geology and Earth Resources Open File Report 99-6, 3 sheets, scale 1:24,000. [http://www.dnr.wa.gov/Publications/ger_ofr99-6_geol_map_spokanene_spokanese_24k.zip]
- Derkey, R. E.; Hehemann, N. J.; Alldritt, Katelin, 2009, Geologic map of the Lake Wooten 7.5-minute quadrangle, Mason County, Washington: Washington Division of Geology and Earth Resources Open File Report 2009-5, 1 sheet, scale 1:24,000. [http://www.dnr.wa.gov/Publications/ger_ofr2009-5_geol_map_lakewooten_24k.pdf]
- Derkey, R. E.; Hehemann, N. J.; Alldritt, Katelin, 2009, Geologic map of the Mason Lake 7.5-minute quadrangle, Mason County, Washington: Washington Division of Geology and Earth Resources Open File Report 2009-6, 1 sheet, scale 1:24,000. [http://www.dnr.wa.gov/Publications/ger_ofr2009-6_geol_map_masonlake_24k.pdf]
- Derkey, R. E.; Stradling, D. F.; Lindsey, K. A.; Tolan, T. L., 2006, Geologic map of the College Place and Walla Walla 7.5-minute quadrangles, Walla Walla County, Washington, and Umatilla County, Oregon: Washington Division of Geology and Earth Resources Geologic Map GM-62, 1 sheet, scale 1:24,000. [http://www.dnr.wa.gov/Publications/ger_gm62_geol_map_collegeplace_wallawalla_24k.pdf]
- Dethier, D. P.; Safioles, S. A.; Minard, J. P., 1982, Preliminary geologic map of the Maxwellton quadrangle, Island County, Washington: U.S. Geological Survey Open-File Report 82-192, 13 p., 1 plate, scale 1:24,000. [http://ngmdb.usgs.gov/Prodesc/proddesc_13677.htm]
- Dethier, D. P.; Whetten, J. T., 1980, Preliminary geologic map of the Clear Lake SW quadrangle [McMurray 7½' quadrangle], Skagit and Snohomish Counties, Washington: U.S. Geological Survey Open-File Report 80-825, 11 p., 2 plates, scale 1:24,000. [http://ngmdb.usgs.gov/Prodesc/proddesc_11787.htm]
- Dethier, D. P.; Whetten, J. T.; Carroll, P. R., 1980, Preliminary geologic map of the Clear Lake SE quadrangle [Stimson Hill 7½' quadrangle], Skagit County, Washington: U.S. Geological Survey Open-File Report 80-303, 11 p., 2 plates, scale 1:24,000. [http://ngmdb.usgs.gov/Prodesc/proddesc_11601.htm]
- Dethier, D. P.; White, D. P.; Brookfield, C. M., 1996, Maps of the surficial geology and depth to bedrock of False Bay, Friday Harbor, Richardson, and Shaw Island 7.5-minute quadrangles, San Juan County, Washington: Washington Division of Geology and Earth Resources Open File Report 96-7, 7 p., 2 plates, scale 1:24,000. [http://www.dnr.wa.gov/Publications/ger_ofr96-7_sw_san_juan_co_24k.pdf]
- Dragovich, J. D.; Anderson, M. L.; Mahan, S. A.; Koger, C. J.; Saltonstall, J. H.; MacDonald, J. H., Jr.; Wessel, G. R.; Stoker, B. A.; Bethel, J. P.;

- Labadie, J. E.; Cakir, Recep; Bowman, J. D.; DuFrane, S. A., 2011, Geologic map of the Monroe 7.5-minute quadrangle, King County, Washington: Washington Division of Geology and Earth Resources Open File Report 2011-1, 1 sheet, scale 1:24,000, with 24 p. text. [http://www.dnr.wa.gov/publications/ger_ofr2011-1_geol_map_monroe_24k.zip]
- Dragovich, J. D.; Anderson, M. L.; Mahan, S. A.; MacDonald, J. H., Jr.; McCabe, C. P.; Cakir, Recep; Stoker, B. A.; Villeneuve, N. M.; Smith, D. T.; Bethel, J. P., 2012, Geologic map of the Lake Joy 7.5-minute quadrangle, King County, Washington: Washington Division of Geology and Earth Resources Map Series 2012-01, 2 sheets, scale 1:24,000, 79 p. text, 1 Microsoft Excel file. [http://www.dnr.wa.gov/Publications/ger_ms2012-01_geol_map_lake_joy_24k.zip]
- Dragovich, J. D.; Anderson, M. L.; Walsh, T. J.; Johnson, B. L.; Adams, T. L., 2007, Geologic map of the Fall City 7.5-minute quadrangle, King County, Washington: Washington Division of Geology and Earth Resources Geologic Map GM67, 1 sheet, scale 1:24,000. [http://www.dnr.wa.gov/Publications/ger_gm67_geol_map_fallcity_24k.zip]
- Dragovich, J. D.; DeOme, A. J., 2006, Geologic map of the McMurray 7.5-minute quadrangle, Skagit and Snohomish Counties, Washington, with a discussion of the evidence for Holocene activity on the Darrington–Devils Mountain fault zone: Washington Division of Geology and Earth Resources Geologic Map GM-61, 1 sheet, scale 1:24,000, with 18 p. text. [http://www.dnr.wa.gov/Publications/ger_gm61_geol_map_mcmurray_24k.zip]
- Dragovich, J. D.; Frattali, C. L.; Anderson, M. L.; Mahan, S. A.; MacDonald, Jr., J. H.; Stoker, B. A.; Smith, D. T.; Koger, C. J.; Cakir, Recep; DuFrane, S. A.; Sauer, K. B., 2014, Geologic map of the Lake Chaplain 7.5-minute quadrangle, Snohomish County, Washington: Washington Division of Geology and Earth Resources Map Series 201401, 1 sheet, scale 1:24,000, 51 p. text. [http://www.dnr.wa.gov/Publications/ger_ms2014-01_geol_map_lake_chaplain_24k.zip]
- Dragovich, J. D.; Gilbertson, L. A.; Lingley, W. S., Jr.; Polenz, Michael; Glenn, Jennifer, 2002, Geologic map of the Darrington 7.5-minute quadrangle, Skagit and Snohomish Counties, Washington: Washington Division of Geology and Earth Resources Open File Report 2002-7, 1 sheet, scale 1:24,000. [http://www.dnr.wa.gov/Publications/ger_ofr2002-7_geol_map_darrington_24k.pdf]
- Dragovich, J. D.; Gilbertson, L. A.; Lingley, W. S., Jr.; Polenz, Michael; Glenn, Jennifer, 2002, Geologic map of the Fortson 7.5-minute quadrangle, Skagit and Snohomish Counties, Washington: Washington Division of Geology and Earth Resources Open File Report 2002-6, 1 sheet, scale 1:24,000. [http://www.dnr.wa.gov/Publications/ger_ofr2002-6_geol_map_fortson_24k.pdf]
- Dragovich, J. D.; Littke, H. A.; Anderson, M. L.; Hartog, Renate; Wessel, G. R.; DuFrane, S. A.; Walsh, T. J.; MacDonald, J. H., Jr.; Mangano, J. F.; Cakir, Recep, 2009, Geologic map of the Snoqualmie 7.5-minute quadrangle, King County, Washington: Washington Division of Geology and Earth Resources Geologic Map GM-75, 2 sheets, scale 1:24,000. [http://www.dnr.wa.gov/publications/ger_gm75_geol_map_snoqualmie_24k.zip]
- Dragovich, J. D.; Gilbertson, L. A.; Norman, D. K.; Anderson, Garth; Petro, G. T., 2002, Geologic map of the Utsalady and Conway 7.5-minute quadrangles, Skagit, Snohomish, and Island Counties, Washington: Washington Division of Geology and Earth Resources Open File Report 2002-5, 34 p., 2 plates, scale 1:24,000. [http://www.dnr.wa.gov/Publications/ger_ofr2002-5_geol_map_utsalady_conway_24k.zip]
- Dragovich, J. D.; Littke, H. A.; Anderson, M. L.; Wessel, G. R.; Koger, C. J.; Saltonstall, J. H.; MacDonald, J. H., Jr.; Mahan, S. A.; DuFrane, S. A., 2010, Geologic map of the Carnation 7.5-minute quadrangle, King County, Washington: Washington Division of Geology and Earth Resources Open File Report 2010-1, 1 sheet, scale 1:24,000, with 21 p. text. [http://www.dnr.wa.gov/Publications/ger_ofr2010-1_geol_map_carnation_24k.zip]
- Dragovich, J. D.; Littke, H. A.; Mahan, S. A.; Anderson, M. L.; MacDonald, J. H., Jr.; Cakir, Recep; Stoker, B. A.; Koger, C. J.; DuFrane, S. A.; Bethel, J. P.; Smith, D. T.; Villeneuve, N. M., 2013, Geologic map of the Sultan 7.5-minute quadrangle, Snohomish and King Counties, Washington: Washington Division of Geology and Earth Resources Map Series 2013-01, 1 sheet, scale 1:24,000, plus 52 p. text. [http://www.dnr.wa.gov/Publications/ger_ms2013-01_geol_map_sultan_24k.zip]
- Dragovich, J.D.; Mahan, S. A.; Anderson, M. L.; MacDonald, J. H., Jr.; Schilter, J. F.; Frattali, C. L.; Koger, C. J.; Smith, D. T.; Stoker, B. A.; DuFrane, Andrew; Eddy, M. P.; Cakir, Recep; Sauer, K. B., 2015, Geologic map of the Lake Roesiger 7.5-minute quadrangle, Snohomish County, Washington: Washington Division of Geology and Earth Resources Map Series 2015-01, 1 sheet, scale 1:24,000, 47 p. text. [http://www.dnr.wa.gov/publications/ger_ms2015-01_geol_map_lake_roesiger_24k.zip]
- Dragovich, J. D.; Norman, D. K.; Grisamer, C. L.; Logan, R. L.; Anderson, Garth, 1998, Geologic map and interpreted geologic history of the Bow and Alger 7.5-minute quadrangles, western Skagit County, Washington: Washington Division of Geology and Earth Resources Open File Report 98-5, 80 p., 3 plates, scale 1:24,000. [http://www.dnr.wa.gov/Publications/ger_ofr98-5_geol_map_bow_alger_24k.zip]
- Dragovich, J. D.; Norman, D. K.; Haugerud, R. A.; Miller, R. B., 1997, Geologic map and bedrock history of the Gilbert 7.5-minute quadrangle, Chelan and Okanogan Counties, Washington; Geochronology, by W. C. McClelland and P. Renne: Washington Division of Geology and Earth Resources Geologic Map GM-46, 1 sheet, scale 1:24,000, with 67 p. text. [http://www.dnr.wa.gov/Publications/ger_gm46_geol_map_bedrock_hist_gilbert_24k.pdf]
- Dragovich, J. D.; Norman, D. K.; Haugerud, R. A.; Pringle, P. T., 1997, Geologic map and interpreted geologic history of the Kendall and Deming 7.5-minute quadrangles, western Whatcom County, Washington: Washington Division of Geology and Earth Resources Open File Report 97-2, 39 p., 3 plates, scale 1:24,000. [http://www.dnr.wa.gov/Publications/ger_ofr97-2_geol_map_kendall_deming_24k.zip]
- Dragovich, J. D.; Norman, D. K.; Lapen, T. J.; Anderson, Garth, 1999, Geologic map of the Sedro-Woolley North and Lyman 7.5-minute quadrangles, western Skagit County, Washington: Washington Division of Geology and Earth Resources Open File Report 99-3, 37 p., 4 plates, scale 1:24,000. [http://www.dnr.wa.gov/Publications/ger_ofr99-3_geol_map_sedrowoolley_lyman_24k.zip]
- Dragovich, J. D.; Petro, G. T.; Thorsen, G. W.; Larson, S. L.; Foster, G. R.; Norman, D. K., 2005, Geologic map of the Oak Harbor, Crescent Harbor, and part of the Smith Island 7.5-minute quadrangles, Island County, Washington: Washington Division of Geology and Earth Resources Geologic Map GM-59, 2 sheets, scale 1:24,000. [http://www.dnr.wa.gov/Publications/ger_gm59_geol_map_oakharbor_crescentharbor_24k.zip]
- Dragovich, J. D.; Stanton, B. W.; Lingley, W. S., Jr.; Griesel, G. A.; Polenz, Michael, 2003, Geologic map of the Mount Higgins 7.5-minute quadrangle, Skagit and Snohomish Counties, Washington: Washington Division of Geology and Earth Resources Open File Report 2003-12, 1 sheet, scale 1:24,000. [http://www.dnr.wa.gov/Publications/ger_ofr2003-12_geol_map_mounthiggins_24k.pdf]
- Dragovich, J. D.; Stanton, B. W.; Lingley, W. S., Jr.; Griesel, G. A.; Polenz, Michael, 2003, Geologic map of the Oso 7.5-minute quadrangle, Skagit and Snohomish Counties, Washington: Washington Division of Geology and Earth Resources Open File Report 2003-11, 1 sheet, scale 1:24,000. [http://www.dnr.wa.gov/Publications/ger_ofr2003-11_geol_map_oso_24k.pdf]
- Dragovich, J. D.; Troost, M. L.; Norman, D. K.; Anderson, Garth; Cass, Jason; Gilbertson, L. A.; McKay, D. T., Jr., 2000, Geologic map of the Anacortes South and La Conner 7.5-minute quadrangles, Skagit and Island Counties, Washington: Washington Division of Geology and Earth Resources Open File Report 2000-6, 4 sheets, scale 1:24,000. [http://www.dnr.wa.gov/Publications/ger_ofr2000-6_geol_map_anacortes_laconner_24k.zip]
- Dragovich, J. D.; Walsh, T. J.; Anderson, M. L.; Hartog, Renate; DuFrane, S. A.; Vervoot, Jeff; Williams, S. A.; Cakir, Recep; Stanton, K. D.; Wolff, F. E.; Norman, D. K.; Czajkowski, J. L., 2009, Geologic map of the North Bend 7.5-minute quadrangle, King County, Washington, with a discussion of major faults, folds, and basins in the map area: Washington Division of Geology and Earth Resources Geologic Map GM-73, 1 sheet, scale 1:24,000. [http://www.dnr.wa.gov/Publications/ger_gm73_geol_map_northbend_24k.zip]
- Dragovich, J. D.; Wolfe, M. W.; Stanton, B. W.; Norman, D. K., 2004, Geologic map of the Stimson Hill 7.5-minute quadrangle, Skagit and Snohomish Counties, Washington: Washington Division of Geology and Earth Resources Open File Report 2004-9, 1 sheet, scale 1:24,000. [http://www.dnr.wa.gov/Publications/ger_ofr2004-9_geol_map_stimsonhill_24k.pdf]
- Duncan, C. H.; Bush, J. H., 1999, Bedrock geologic map of the Palouse quadrangle, Whitman County, Washington, and Latah County, Idaho: Idaho

- Geological Survey Technical Report 99-7, 1 sheet, scale 1:24,000. [http://www.dnr.wa.gov/Publications/ger_igs_tr99-7_palouse_24k.pdf]
- Evans, J. G., 1982, Preliminary geologic map of the Stensgar Mountain quadrangle, Stevens County, Washington: U.S. Geological Survey Open-File Report 82-492, 1 sheet, scale 1:24,000. [http://ngmdb.usgs.gov/Prodesc/proddesc_13741.htm]
- Evans, J. G., 1987, Geology of the Stensgar Mountain quadrangle, Stevens County, Washington: U.S. Geological Survey Bulletin 1679, 23 p., 1 plate, scale 1:24,000. [http://ngmdb.usgs.gov/Prodesc/proddesc_21836.htm]
- Evarts, R. C., 2001, Geologic map of the Silver Lake quadrangle, Cowlitz County, Washington: U.S. Geological Survey Miscellaneous Field Studies Map MF-2371, 1 sheet, scale 1:24,000, with 37 p. text. [http://ngmdb.usgs.gov/Prodesc/proddesc_42703.htm]
- Evarts, R. C., 2002, Geologic map of the Deer Island quadrangle, Columbia County, Oregon and Cowlitz County, Washington: U.S. Geological Survey Miscellaneous Field Studies Map MF2392, 45 p., 1 plate, scale 1:24,000. [http://ngmdb.usgs.gov/Prodesc/proddesc_52279.htm]
- Evarts, R. C., 2004, Geologic map of the Ariel quadrangle, Clark and Cowlitz Counties, Washington: U.S. Geological Survey Scientific Investigations Map SIM-2826, 1 sheet, scale 1:24,000, with 35 p. text. [http://ngmdb.usgs.gov/Prodesc/proddesc_67706.htm]
- Evarts, R. C., 2004, Geologic map of the Ridgefield quadrangle, Clark and Cowlitz Counties, Washington: U.S. Geological Survey Scientific Investigations Map SIM-2844, 1 sheet, scale 1:24,000, with 21 p. text. [http://ngmdb.usgs.gov/Prodesc/proddesc_69996.htm]
- Evarts, R. C., 2004, Geologic map of the Saint Helens quadrangle, Columbia County, Oregon, and Clark and Cowlitz Counties, Washington: U.S. Geological Survey Scientific Investigations Map SIM-2834, 1 sheet, scale 1:24,000, with 23 p. text. [http://ngmdb.usgs.gov/Prodesc/proddesc_67707.htm]
- Evarts, R. C., 2004, Geologic map of the Woodland quadrangle, Clark and Cowlitz Counties, Washington: U.S. Geological Survey Scientific Investigations Map SIM-2827, 1 sheet, scale 1:24,000, with 38 p. text. [http://ngmdb.usgs.gov/Prodesc/proddesc_67708.htm]
- Evarts, R. C., 2005, Geologic map of the Amboy quadrangle, Clark and Cowlitz Counties, Washington: U.S. Geological Survey Scientific Investigations Map 2885, 1 sheet, scale 1:24,000, with 25 p. text. [http://ngmdb.usgs.gov/Prodesc/proddesc_72187.htm]
- Evarts, R. C., 2006, Geologic map of the Lacamas Creek quadrangle, Clark County, Washington: U.S. Geological Survey Scientific Investigations Map SIM-2924, 1 sheet, scale 1:24,000, with 22 p. text. [http://ngmdb.usgs.gov/Prodesc/proddesc_76689.htm]
- Evarts, R. C., 2006, Geologic map of the Yacolt quadrangle, Clark County, Washington: U.S. Geological Survey Scientific Investigations Map 2901, 1 sheet, scale 1:24,000, with 31 p. text. [http://ngmdb.usgs.gov/Prodesc/proddesc_76688.htm]
- Evarts, R. C.; Ashley, R. P., 1990, Preliminary geologic map of the Cougar quadrangle, Cowlitz and Clark Counties, Washington: U.S. Geological Survey Open-File Report 90-631, 40 p., 1 plate, scale 1:24,000. [http://ngmdb.usgs.gov/Prodesc/proddesc_18000.htm]
- Evarts, R. C.; Ashley, R. P., 1990, Preliminary geologic map of the Goat Mountain quadrangle, Cowlitz County, Washington: U.S. Geological Survey Open-File Report 90-632, 47 p., 1 plate, scale 1:24,000. [<http://pubs.er.usgs.gov/usgspubs/ofr/ofr90632>]
- Evarts, R. C.; Ashley, R. P., 1991, Preliminary geologic map of the Lakeview Peak quadrangle, Cowlitz County, Washington: U.S. Geological Survey Open-File Report 91-289, 35 p., 1 plate, scale 1:24,000. [http://ngmdb.usgs.gov/Prodesc/proddesc_18112.htm]
- Evarts, R. C.; Ashley, R. P., 1992, Preliminary geologic map of the Elk Mountain quadrangle, Cowlitz County, Washington: U.S. Geological Survey Open-File Report 92-362, 44 p., 1 plate, scale 1:24,000. [http://ngmdb.usgs.gov/Prodesc/proddesc_18295.htm]
- Evarts, R. C.; Ashley, R. P., 1993, Geologic map of the Cowlitz Falls quadrangle, Lewis and Skamania Counties, Washington: U.S. Geological Survey Geologic Quadrangle Map GQ-1682, 1 sheet, scale 1:24,000, with 10 p. text. [http://ngmdb.usgs.gov/Prodesc/proddesc_273.htm]
- Evarts, R. C.; Ashley, R. P., 1993, Geologic map of the Spirit Lake East quadrangle, Skamania County, Washington: U.S. Geological Survey Geologic Quadrangle Map GQ-1679, 1 sheet, scale 1:24,000, with 12 p. text. [http://ngmdb.usgs.gov/Prodesc/proddesc_1191.htm]
- Evarts, R. C.; Ashley, R. P., 1993, Geologic map of the Spirit Lake West quadrangle, Skamania and Cowlitz Counties, Washington: U.S. Geological Survey Geologic Quadrangle Map GQ-1681, 1 sheet, scale 1:24,000, with 11 p. text. [http://ngmdb.usgs.gov/Prodesc/proddesc_1193.htm]
- Evarts, R. C.; Ashley, R. P., 1993, Geologic map of the Vanson Peak quadrangle, Lewis, Cowlitz, and Skamania Counties, Washington: U.S. Geological Survey Geologic Quadrangle Map GQ-1680, 1 sheet, scale 1:24,000, with 12 p. text. [http://ngmdb.usgs.gov/Prodesc/proddesc_1192.htm]
- Evarts, R. C.; O'Connor, J. E., 2008, Geologic map of the Camas quadrangle, Clark County, Washington, and Multnomah County, Oregon: U.S. Geological Survey Scientific Investigations Map SIM-3017, 1 sheet, scale 1:24,000, with 31 p. text. [http://ngmdb.usgs.gov/Prodesc/proddesc_83734.htm]
- Evarts, R. C.; O'Connor, J. E.; Tolan, T. L., 2013, Geologic map of the Washougal quadrangle, Clark County, Washington, and Multnomah County, Oregon: U.S. Geological Survey Scientific Investigations Map SIM-3257, 1 sheet, scale 1:24,000, with 46 p. text. [http://ngmdb.usgs.gov/Prodesc/proddesc_99068.htm]
- Fecht, K. R., 1978, Geology of Gable Mountain-Gable Butte area [part of Gable Butte, Hanford, Riverland, and Savage Island 7½' quadrangles]: Rockwell Hanford Operations RHO-BWI-LD-5, 57 p., 4 plates, scale 1:24,000. [http://www.dnr.wa.gov/Publications/ger_rho-bwi-ld-5_gable_mt_24k.pdf]
- Fox, K. F., Jr., 1981, Reconnaissance geologic map of the Churchill Mtn. quadrangle, Stevens County, Washington: U.S. Geological Survey Open-File Report 81-169, 3 sheets, scale 1:24,000. [http://ngmdb.usgs.gov/Prodesc/proddesc_11954.htm]
- Gard, L. M., Jr., 1968, Bedrock geology of the Lake Tapps quadrangle [Wilkeson and part of the Buckley and Orting 7½' quadrangles], Pierce County, Washington: U.S. Geological Survey Professional Paper 388-B, 33 p., 2 plates, scale 1:24,000. [http://ngmdb.usgs.gov/Prodesc/proddesc_4387.htm]
- Gayer, M. J., 1976, Geologic map of northeastern Jefferson County [Port Townsend South and part of Center, Gardiner, Nordland, Port Ludlow, Port Townsend North, and Uncas 7½' quadrangles], Washington: Washington Division of Geology and Earth Resources Open File Report 76-21, 1 sheet, scale 1:24,000. [http://www.dnr.wa.gov/Publications/ger_ofr76-21_geol_map_jefferson_co_24k.pdf]
- Geoscience Research Consultants (Bond, J. G.; Kauffman, J. D.; Miller, D. A.; Barrash, Warren; Brown, J. C.; Bush, J. H., Jr.; Hall, W. B.; and others), 1978, Geology of the southwestern Pasco Basin: Rockwell Hanford Operations RHO-BWIC-25, 217 p., in folder with 43 plates, scale 1:24,000 [Badger Mountain, Benton City, Corral Canyon, Grandview SE (Sagebrush Ridge), Grandview SW (Grandview), Horn Rapids Dam, Iowa Flats, Maiden Spring, Richland, Richland NE (Wooded Island), Snipes Creek, Snively Basin, Sulphur Spring, Webber Canyon, Whitstran, and Whitstran NE 7½' quadrangles].
- Goff, F. E., 1981, Preliminary geology of eastern Umtanum Ridge [part of Cairn Hope Peak, Emerson Nipple, Priest Rapids, and part of Riverland 7½' quadrangles], south-central Washington: Rockwell International, Rockwell Hanford Operations, Energy System Group, RHO-BWI C-21, 100 p., 2 plates, scale 1:24,000. [http://www.dnr.wa.gov/Publications/ger_rho-bwic-21_umtanum_ridge_24k.pdf]
- Gower, H. D.; Wanek, A. A., 1963, Preliminary geologic map of the Cumberland quadrangle, King County, Washington: Washington Division of Mines and Geology Geologic Map GM-2, 1 sheet, scale 1:24,000. [http://www.dnr.wa.gov/Publications/ger_rho-bwic-21_umtanum_ridge_24k.pdf]
- Gresens, R. L., 1983, Geology of the Wenatchee and Monitor quadrangles, Chelan and Douglas Counties, Washington: Washington Division of Geology and Earth Resources Bulletin 75, 75 p., 3 plates, scale 1:24,000. [http://www.dnr.wa.gov/publications/ger_b75_geol_wenatchee_monitor.pdf]
- Grolier, M. J.; Foxworthy, B. L., 1961, Geology of the Moses Lake North quadrangle, Washington: U.S. Geological Survey Miscellaneous Geologic Investigations Map I-330, 1 sheet, scale 1:24,000. [http://ngmdb.usgs.gov/Prodesc/proddesc_1379.htm]
- Haeussler, P. J.; Clark, K. P., 2000, Preliminary geologic map of the Wildcat Lake 7.5' quadrangle, Kitsap and Mason Counties, Washington: U.S. Geological Survey Open-File Report 00-356, 1 sheet, scale 1:24,000. [http://ngmdb.usgs.gov/Prodesc/proddesc_34290.htm]
- Haeussler, P. J.; Yount, J. C.; Wells, R. E., 1999, Preliminary geologic map of the Uncas 7.5' quadrangle, Clallam and Jefferson Counties, Washington: U.S. Geological Survey Open-File Report 99-421, 1 sheet, scale 1:24,000. [http://ngmdb.usgs.gov/Prodesc/proddesc_22626.htm]
- Hagood, M. C., 1986, Structure and evolution of the Horse Heaven Hills [part of Corral Canyon,

- Mabton East, Prosser, Webber Canyon, Whitstran, and Whitstran NE 7½' quadrangles] in southcentral Washington: Rockwell Hanford Operations RHO-BW-SA-344 P, 190 p., 1 plate, scale 1:24,000. [http://www.dnr.wa.gov/Publications/ger_rho-bw-sa-344-p_horse_heaven_hills_24k.pdf]
- Hamilton, M. M.; Derkey, R. E., 2005, Geologic map of the Chattaroy 7.5-minute quadrangle, Spokane County, Washington: Washington Division of Geology and Earth Resources Geologic Map GM55, 1 sheet, scale 1:24,000. [http://www.dnr.wa.gov/Publications/ger_gm55_geol_map_chattaroy_24k.pdf]
- Hamilton, M. M.; Derkey, R. E.; Stradling, D. F., 2004, Geologic map of the Four Lakes 7.5-minute quadrangle, Spokane County, Washington: Washington Division of Geology and Earth Resources Open File Report 2004-2, 1 sheet, scale 1:24,000. [http://www.dnr.wa.gov/Publications/ger_ofr2004-2_geol_map_fourlakes_24k.pdf]
- Hamilton, M. M.; Derkey, R. E.; Stradling, D. F., 2004, Geologic map of the Spokane Southwest 7.5-minute quadrangle, Spokane County, Washington: Washington Division of Geology and Earth Resources Open File Report 2004-4, 1 sheet, scale 1:24,000. [http://www.dnr.wa.gov/Publications/ger_ofr2004-4_geol_map_spokanesw_24k.pdf]
- Hammond, P. E., 2005, Geologic map of the Timberwolf Mountain 7.5-minute quadrangle, Yakima County, Washington: Washington Division of Geology and Earth Resources Geologic Map GM-60, 1 sheet, scale 1:24,000. [http://www.dnr.wa.gov/Publications/ger_gm60_geol_map_timberwolfmountain_24k.pdf]
- Hammond, P. E., 2009, Geologic map of the Meeks Table and western two-thirds of the Nile 7.5-minute quadrangles, Yakima County, Washington: Washington Division of Geology and Earth Resources Geologic Map GM-74, 1 plate, scale 1:24,000, with 12 p. text. [http://www.dnr.wa.gov/Publications/ger_gm74_meekstable_nile_24k.zip]
- Hammond, P. E., 2010, Geologic map of the Cliffdell and western two-thirds of the Manastash Lake 7.5-minute quadrangles, Yakima and Kittitas Counties, Washington: Washington Division of Geology and Earth Resources Geologic Map GM-76, 1 sheet, scale 1:24,000, with 11 p. text. [http://www.dnr.wa.gov/Publications/ger_gm76_cliffdell_manastash_lake_24k.zip]
- Hanson, K. L., 1976, Geologic map of the Uncas-Port Ludlow area [part of Lofall, Mount Walker, Quilcene, and Uncas; full Center and Port Ludlow 7½' quadrangles], Jefferson County, Washington: Washington Division of Geology and Earth Resources Open File Report 76-20, 1 sheet, scale 1:24,000. [http://www.dnr.wa.gov/Publications/ger_ofr76-20_geol_map_uncas_port_ludlow_24k.pdf]
- Haugerud, R. A., 2005, Preliminary geologic map of Bainbridge Island [part of Bremerton East, Duwamish Head, Shilshole Bay, Suquamish 7½' quadrangles], Washington: U.S. Geological Survey Open-File Report 2005-1387, version 1.0, 1 sheet, scale 1:24,000. [http://ngmdb.usgs.gov/Prodesc/proddesc_74085.htm]
- Haugerud, R. A.; Troost, K. G., 2011, Geologic map of the Suquamish 7.5' quadrangle and part of the Seattle North 7.5' x 15' quadrangle, Kitsap County, Washington: U.S. Geological Survey Scientific Investigations Map 3181, 1 plate, scale 1:24,000, with 9 p. text. [http://ngmdb.usgs.gov/Prodesc/proddesc_96385.htm]
- Hildreth, Wes; Fierstein, Judy, 2015, Geologic map of the Simcoe Mountains Volcanic Field, Main Central Segment, Yakama Nation, Washington: U.S. Geological Survey Scientific Investigations Map 3315, 3 sheets, scale 1:24,000, 76 p. text. [<http://pubs.usgs.gov/sim/3315/>]
- Howard, K. A., 2002, Geologic map of the Battle Ground 7.5-minute quadrangle, Clark County, Washington: U.S. Geological Survey Miscellaneous Field Studies Map MF-2395, 18 p., 1 plate, scale 1:24,000. [http://ngmdb.usgs.gov/Prodesc/proddesc_52491.htm]
- Jones, M. G.; Landon, R. D., 1978, Geology of the Nine Canyon map area [Johnson Butte, Kennewick, Nine Canyon, and Pasco 7½' quadrangles]: Rockwell Hanford Operations RHOBI-LD-6, 54 p., 5 plates, scale 1:24,000.
- Kiver, E.; Stradling, D., 1987, Geologic map—Bangs Mountain, Washington: U.S. Bureau of Reclamation, Grand Coulee Project Office, 1 sheet, scale 1:24,000.
- Kiver, E.; Stradling, D., 1987, Geologic map—Bossburg, Washington: U.S. Bureau of Reclamation, Grand Coulee Project Office, 1 sheet, scale 1:24,000.
- Kiver, E.; Stradling, D., 1987, Geologic map—Boysds, Washington: U.S. Bureau of Reclamation, Grand Coulee Project Office, 1 sheet, scale 1:24,000.
- Kiver, E.; Stradling, D., 1987, Geologic map—Marcus, Washington: U.S. Bureau of Reclamation, Grand Coulee Project Office, 1 sheet, scale 1:24,000.
- Livingston, V. E., Jr., 1966, Geology and mineral resources of the Kelso-Cathlamet area [Kelso 7½' quadrangle], Cowlitz and Wahkiakum Counties, Washington: Washington Division of Mines and Geology Bulletin 54, 110 p., 2 plates, scale 1:24,000. [http://www.dnr.wa.gov/publications/ger_b54_geol_min_res_kelso_cathlamet.pdf]
- Logan, R. L.; Polenz, Michael; Walsh, T. J.; Schasse, H. W., 2003, Geologic map of the Squaxin Island 7.5-minute quadrangle, Mason and Thurston Counties, Washington: Washington Division of Geology and Earth Resources Open File Report 2003-23, 1 sheet, scale 1:24,000. [http://www.dnr.wa.gov/Publications/ger_ofr2003-23_geol_map_squaxin_island_24k.pdf]
- Logan, R. L.; Walsh, T. J., 2004, Geologic map of the Summit Lake 7.5-minute quadrangle, Thurston and Mason Counties, Washington: Washington Division of Geology and Earth Resources Open File Report 2004-10, 1 sheet, scale 1:24,000. [http://www.dnr.wa.gov/Publications/ger_ofr200410_geol_map_summitlake_24k.pdf]
- Logan, R. L.; Walsh, T. J., 2007, Geologic map of the Vaughn 7.5-minute quadrangle, Pierce and Mason Counties, Washington: Washington Division of Geology and Earth Resources Geologic Map GM65, 1 sheet, scale 1:24,000. [http://www.dnr.wa.gov/Publications/ger_gm65_geol_map_vaughn_24k.pdf]
- Logan, R. L.; Walsh, T. J.; Polenz, Michael, 2003, Geologic map of the Longbranch 7.5-minute quadrangle, Thurston, Pierce, and Mason Counties, Washington: Washington Division of Geology and Earth Resources Open File Report 2003-21, 1 sheet, scale 1:24,000. [http://www.dnr.wa.gov/Publications/ger_ofr2003-21_geol_map_longbranch_24k.pdf]
- Logan, R. L.; Walsh, T. J.; Schasse, H. W.; Polenz, Michael, 2003, Geologic map of the Lacey 7.5-minute quadrangle, Thurston County, Washington: Washington Division of Geology and Earth Resources Open File Report 2003-9, 1 sheet, scale 1:24,000. [http://www.dnr.wa.gov/Publications/ger_ofr2003-9_geol_map_lacey_24k.pdf]
- Logan, R. L.; Walsh, T. J.; Stanton, B. W.; Sarikhan, I. Y., 2009, Geologic map of the Maytown 7.5-minute quadrangle, Thurston County, Washington: Washington Division of Geology and Earth Resources Geologic Map GM-72, 1 sheet, scale 1:24,000. [http://www.dnr.wa.gov/Publications/ger_gm72_geol_map_maytown_24k.pdf]
- Logan, R. L.; Walsh, T. J.; Troost, K. G., 2006, Geologic map of the Fox Island 7.5-minute quadrangle, Pierce County, Washington: Washington Division of Geology and Earth Resources Geologic Map GM-63, 1 sheet, scale 1:24,000. [http://www.dnr.wa.gov/Publications/ger_gm63_geol_map_foxisland_24k.pdf]
- McLucas, G. B., 1980, Surficial geology of the Springdale and Forest Center quadrangles, Stevens County, Washington: Washington Division of Geology and Earth Resources Open File Report 80-3, 29 p., 2 plates, scale 1:24,000. [http://www.dnr.wa.gov/Publications/ger_ofr80-3_springdale_forest_center_24k.pdf]
- Miller, R. B., 1987, Geology of the Twisp River-Chelan Divide region [Hoodoo Peak, Martin Peak, McAlester Mountain, McGregor Mountain, Midnight Mountain, Oval Peak, Prince Creek, Stehekin, Sun Mountain 7½' quadrangles], North Cascades, Washington: Washington Division of Geology and Earth Resources Open File Report 87-17, 12 p., 12 plates [pl. 1, 1:100,000; pl. 2-12, 1:24,000].
- Mills, J. W., 1985, Geologic maps of the Marcus and Kettle Falls quadrangles, Stevens and Ferry Counties, Washington: Washington Division of Geology and Earth Resources Geologic Map GM32, 2 sheets, scale 1:24,000, with 18 p. text. [http://www.dnr.wa.gov/Publications/ger_gm32_geol_map_marcus_kettlefalls_24k.pdf]
- Mills, J. W.; Duncan, G. W.; Brainard, R. C.; Hogge, C. E.; Laskowski, E. R., 1985, Geologic maps of the Echo Valley and the north part of the Colville 7½' quadrangles, Washington: Washington Division of Geology and Earth Resources Open File Report 85-7, 2 sheets, scale 1:24,000. [http://www.dnr.wa.gov/Publications/ger_ofr85-7_echo_valley_colville_24k.pdf]
- Minard, J. P., 1980, Distribution and description of the geologic units in the Arlington East quadrangle, Washington: U.S. Geological Survey Open-File Report 80-460, 7 p., 1 plate, scale 1:24,000. [http://ngmdb.usgs.gov/Prodesc/proddesc_11642.htm]
- Minard, J. P., 1980, Distribution and description of the geologic units in the Arlington West quadrangle, Washington: U.S. Geological Survey Open-File Report 80-461, 7 p., 1 plate, scale 1:24,000. [http://ngmdb.usgs.gov/Prodesc/proddesc_11643.htm]
- Minard, J. P., 1980, Distribution and description of the geologic units in the Lake Stevens quadrangle, Washington: U.S. Geological Survey Open-File

- Report 80-463, 6 p., 1 sheet, scale 1:24,000. [http://ngmdb.usgs.gov/Prodesc/proddesc_11645.htm]
- Minard, J. P., 1980, Distribution and description of the geologic units in the Marysville quadrangle, Washington: U.S. Geological Survey Open-File Report 80-464, 5 p., 1 plate, scale 1:24,000. [http://ngmdb.usgs.gov/Prodesc/proddesc_11646.htm]
- Minard, J. P., 1980, Distribution and description of the geologic units in the Snohomish quadrangle, Washington: U.S. Geological Survey Open-File Report 80-2013, 7 p., 1 plate, scale 1:24,000. [http://ngmdb.usgs.gov/Prodesc/proddesc_11544.htm]
- Minard, J. P., 1980, Distribution and description of the geologic units in the Stanwood quadrangle, Washington: U.S. Geological Survey Open-File Report 80-462, 6 p., 1 plate, scale 1:24,000. [http://ngmdb.usgs.gov/Prodesc/proddesc_11644.htm]
- Minard, J. P., 1980, Distribution and description of the geologic units in the Tulalip quadrangle, Washington: U.S. Geological Survey Open-File Report 80-465, 6 p., 1 sheet, scale 1:24,000. [http://ngmdb.usgs.gov/Prodesc/proddesc_11647.htm]
- Minard, J. P., 1981, Distribution and description of the geologic units in the Bothell quadrangle, Washington: U.S. Geological Survey Open-File Report 81-106, 4 p., 1 sheet, scale 1:24,000. [http://ngmdb.usgs.gov/Prodesc/proddesc_11877.htm]
- Minard, J. P., 1981, Distribution and description of the geologic units in the Everett quadrangle, Washington: U.S. Geological Survey Open-File Report 81-248, 5 p., 1 sheet, scale 1:24,000. [http://ngmdb.usgs.gov/Prodesc/proddesc_11972.htm]
- Minard, J. P., 1981, Distribution and description of the geologic units in the Maltby quadrangle, Washington: U.S. Geological Survey Open-File Report 81-100, 4 p., 1 plate, scale 1:24,000. [http://ngmdb.usgs.gov/Prodesc/proddesc_11856.htm]
- Minard, J. P., 1982, Distribution and description of geologic units in the Mukilteo quadrangle, Washington: U.S. Geological Survey Miscellaneous Field Studies Map MF-1438, 1 sheet, scale 1:24,000. [http://ngmdb.usgs.gov/Prodesc/proddesc_7184.htm]
- Minard, J. P., 1983, Geologic map of the Edmonds East and part of the Edmonds West quadrangles, Washington: U.S. Geological Survey Miscellaneous Field Studies Map MF-1541, 1 sheet, scale 1:24,000. [http://ngmdb.usgs.gov/Prodesc/proddesc_7448.htm]
- Minard, J. P., 1983, Geologic map of the Kirkland quadrangle, Washington: U.S. Geological Survey Miscellaneous Field Studies Map MF-1543, 1 sheet, scale 1:24,000. [http://ngmdb.usgs.gov/Prodesc/proddesc_7467.htm]
- Minard, J. P., 1985, Geologic map of the Arlington East quadrangle, Snohomish County, Washington: U.S. Geological Survey Miscellaneous Field Studies Map MF-1739, 1 sheet, scale 1:24,000. [http://ngmdb.usgs.gov/Prodesc/proddesc_7431.htm]
- Minard, J. P., 1985, Geologic map of the Arlington West quadrangle, Snohomish County, Washington: U.S. Geological Survey Miscellaneous Field Studies Map MF-1740, 1 sheet, scale 1:24,000. [http://ngmdb.usgs.gov/Prodesc/proddesc_7432.htm]
- Minard, J. P., 1985, Geologic map of the Bothell quadrangle, Snohomish and King Counties, Washington: U.S. Geological Survey Miscellaneous Field Studies Map MF-1747, 1 sheet, scale 1:24,000. [http://ngmdb.usgs.gov/Prodesc/proddesc_7439.htm]
- Minard, J. P., 1985, Geologic map of the Everett 7.5-minute quadrangle, Snohomish County, Washington: U.S. Geological Survey Miscellaneous Field Studies Map MF-1748, 1 sheet, scale 1:24,000. [http://ngmdb.usgs.gov/Prodesc/proddesc_7449.htm]
- Minard, J. P., 1985, Geologic map of the Lake Stevens quadrangle, Snohomish County, Washington: U.S. Geological Survey Miscellaneous Field Studies Map MF-1742, 1 sheet, scale 1:24,000. [http://ngmdb.usgs.gov/Prodesc/proddesc_7468.htm]
- Minard, J. P., 1985, Geologic map of the Maltby quadrangle, Snohomish and King Counties, Washington: U.S. Geological Survey Miscellaneous Field Studies Map MF-1746, 1 sheet, scale 1:24,000. [http://ngmdb.usgs.gov/Prodesc/proddesc_7475.htm]
- Minard, J. P., 1985, Geologic map of the Marysville quadrangle, Snohomish County, Washington: U.S. Geological Survey Miscellaneous Field Studies Map MF-1743, 1 sheet, scale 1:24,000. [http://ngmdb.usgs.gov/Prodesc/proddesc_7476.htm]
- Minard, J. P., 1985, Geologic map of Quaternary deposits of the Pothole quadrangle, Okanogan County, Washington: U.S. Geological Survey Miscellaneous Field Studies Map MF-1680, 1 sheet, scale 1:24,000. [http://ngmdb.usgs.gov/Prodesc/proddesc_7425.htm]
- Minard, J. P., 1985, Geologic map of the Snohomish quadrangle, Snohomish County, Washington: U.S. Geological Survey Miscellaneous Field Studies Map MF-1745, 1 sheet, scale 1:24,000. [http://ngmdb.usgs.gov/Prodesc/proddesc_7499.htm]
- Minard, J. P., 1985, Geologic map of the Stanwood quadrangle, Snohomish County, Washington: U.S. Geological Survey Miscellaneous Field Studies Map MF-1741, 1 sheet, scale 1:24,000. [http://ngmdb.usgs.gov/Prodesc/proddesc_7504.htm]
- Minard, J. P., 1985, Geologic map of the Tulalip quadrangle, Snohomish County, Washington: U.S. Geological Survey Miscellaneous Field Studies Map MF-1744, 1 sheet, scale 1:24,000. [http://ngmdb.usgs.gov/Prodesc/proddesc_7510.htm]
- Minard, J. P.; Booth, D. B., 1988, Geologic map of the Redmond quadrangle, King County, Washington: U.S. Geological Survey Miscellaneous Field Studies Map MF-2016, 1 sheet, scale 1:24,000. [http://ngmdb.usgs.gov/Prodesc/proddesc_5609.htm]
- Mullineaux, D. R., 1961, Geology of the Renton, Auburn, and Black Diamond quadrangles, Washington: U.S. Geological Survey Open-File Report 61-110, 202 p., 3 plates, scale 1:24,000. [http://ngmdb.usgs.gov/Prodesc/proddesc_7990.htm]
- Mullineaux, D. R., 1965, Geologic map of the Auburn quadrangle, King and Pierce Counties, Washington: U.S. Geological Survey Geologic Quadrangle Map GQ-406, 1 sheet, scale 1:24,000. [http://ngmdb.usgs.gov/Prodesc/proddesc_873.htm]
- Mullineaux, D. R., 1965, Geologic map of the Black Diamond quadrangle, King County, Washington: U.S. Geological Survey Geologic Quadrangle Map GQ-407, 1 sheet, scale 1:24,000. [http://ngmdb.usgs.gov/Prodesc/proddesc_874.htm]
- Mullineaux, D. R., 1965, Geologic map of the Renton quadrangle, King County, Washington: U.S. Geological Survey Geologic Quadrangle Map GQ405, 1 sheet, scale 1:24,000. [http://ngmdb.usgs.gov/Prodesc/proddesc_872.htm]
- O'Neal, M. A., 2004, Geologic map of the Lilliwaup and Lake Wooten 7.5-minute quadrangles, Kitsap and Mason Counties, Washington: University of Washington?, 1 sheet, scale 1:24,000. [<http://www.hoodcanal.washington.edu/documents/document.jsp?id=1523>]
- Othberg, K. L.; Palmer, Pamela, 1979, Preliminary surficial geologic map of the Carlsborg quadrangle, Clallam County, Washington: Washington Division of Geology and Earth Resources Open File Report 79-20, 1 sheet, scale 1:24,000. [http://www.dnr.wa.gov/Publications/ger_ofr79-20_carlsborg_24k.pdf]
- Othberg, K. L.; Palmer, Pamela, 1979, Preliminary surficial geologic map of the Dungeness quadrangle, Clallam County, Washington: Washington Division of Geology and Earth Resources Open File Report 79-17, 3 p., 1 plate, scale 1:24,000. [http://www.dnr.wa.gov/Publications/ger_ofr79-17_dungeness_24k.pdf]
- Othberg, K. L.; Palmer, Pamela, 1979, Preliminary surficial geologic map of part of the Gardiner quadrangle, Clallam County, Washington: Washington Division of Geology and Earth Resources Open File Report 79-19, 3 p., 1 plate, scale 1:24,000. [http://www.dnr.wa.gov/Publications/ger_ofr79-19_gardiner_24k.pdf]
- Othberg, K. L.; Palmer, Pamela, 1979, Preliminary surficial geologic map of the Sequim quadrangle, Clallam County, Washington: Washington Division of Geology and Earth Resources Open File Report 79-18, 4 p., 1 plate, scale 1:24,000. [http://www.dnr.wa.gov/Publications/ger_ofr79-18_sequim_24k.pdf]
- Polenz, Michael; Alldritt, Katelin; Hehemann, N. J.; Logan, R. L., 2009, Geologic map of the Burley 7.5-minute quadrangle, Kitsap and Pierce Counties, Washington: Washington Division of Geology and Earth Resources Open File Report 2009-8, 1 sheet, scale 1:24,000. [http://www.dnr.wa.gov/Publications/ger_ofr2009-8_geol_map_burley_24k.pdf]
- Polenz, Michael; Alldritt, Katelin; Hehemann, N. J.; Sarikhan, I. Y.; Logan, R. L., 2009, Geologic map of the Belfair 7.5-minute quadrangle, Mason, Kitsap, and Pierce Counties, Washington: Washington Division of Geology and Earth Resources Open File Report 2009-7, 1 sheet, scale 1:24,000. [http://www.dnr.wa.gov/Publications/ger_ofr2009-7_geol_map_belfair_24k.pdf]
- Polenz, Michael; Czajkowski, J. L.; Legorreta Paulin, Gabriel; Contreras, T. A.; Miller, B. A.; Martin, M. E.; Walsh, T. J.; Logan, R. L.; Carson, R. J.; Johnson, C. N.; Skov, R. H.; Mahan, S. A.; Cohan, C. R., 2010, Geologic map of the Skokomish Valley and Union 7.5-minute quadrangles, Mason County, Washington: Washington Division of Geology and Earth Resources Open File Report 2010-3, 1 sheet, scale 1:24,000, with 21 p. text. [http://www.dnr.wa.gov/Publications/ger_ofr2010-3_geol_map_skokomish_valley_union_24k.zip]

- Polenz, Michael; Favia, J. G.; Huber, I. J.; Legorreta Paulin, Gabriel; Cakir, Recep, 2015, Geologic map of the Port Ludlow and southern half of the Hansville 7.5-minute quadrangles, Kitsap and Jefferson Counties, Washington: Washington Division of Geology and Earth Resources Map Series 2015-02, 1 sheet, scale 1:24,000, 40 p. text. [http://www.dnr.wa.gov/publications/ger_ms2015-02_geol_map_port_ludlow_hansville_24k.zip]
- Polenz, Michael; Gordon, H. O.; Hubert, I. J.; Contreras, T. A.; Patton, A. I.; Legorreta Paulin, Gabriel; Recep Cakir, 2014, Geologic map of the Center 7.5-minute quadrangle, Jefferson County, Washington: Washington Division of Geology and Earth Resources Map Series 2014-02, 1 sheet, scale 1:24,000, 35 p. text. [http://www.dnr.wa.gov/Publications/ger_ms2014-02_geol_map_center_24k.zip]
- Polenz, Michael; Miller, B. A.; Davies, Nigel; Perry, B. B.; Clark, K. P.; Walsh, T. J.; Carson, R. J.; Hughes, J. F., 2012, Geologic map of the Hoodport 7.5-minute quadrangle, Mason County, Washington: Washington Division of Geology and Earth Resources Open File Report 2011-3, 1 sheet, scale 1:24,000, 19 p. text. [http://www.dnr.wa.gov/Publications/ger_ofr2011-3_geol_map_hoodport_24k.zip]
- Polenz, Michael; Petro, G. T.; Contreras, T. A.; Stone, K. A.; Legorreta Paulin, Gabriel; Cakir, Recep, 2013, Geologic map of the Seabeck and Poulsbo 7.5-minute quadrangles, Kitsap and Jefferson Counties, Washington: Washington Division of Geology and Earth Resources Map Series 201302, 1 sheet, scale 1:24,000, with 39 p. text. [http://www.dnr.wa.gov/Publications/ger_ms201302_geol_map_seabeck-poulsbo_24k.zip]
- Polenz, Michael; Schasse, H. W.; Kalk, M. L.; Petersen, B. B., 2009, Geologic map of the Camano 7.5-minute quadrangle, Island County, Washington: Washington Division of Geology and Earth Resources Geologic Map GM-68, 1 sheet, scale 1:24,000. [http://www.dnr.wa.gov/Publications/ger_gm68_geol_map_camano_24k.pdf]
- Polenz, Michael; Schasse, H. W.; Petersen, B. B., 2006, Geologic map of the Freeland and northern part of the Hansville 7.5-minute quadrangles, Island County, Washington: Washington Division of Geology and Earth Resources Geologic Map GM-64, 1 sheet, scale 1:24,000. [http://www.dnr.wa.gov/Publications/ger_gm64_geol_map_freeland_hansville_24k.pdf]
- Polenz, Michael; Slaughter, S. L.; Thorsen, G. W., 2005, Geologic map of the Coupeville and part of the Port Townsend North 7.5-minute quadrangles, Island County, Washington: Washington Division of Geology and Earth Resources Geologic Map GM-58, 1 sheet, scale 1:24,000. [http://www.dnr.wa.gov/Publications/ger_gm58_geol_map_coupeville_24k.pdf]
- Polenz, Michael; Spangler, Eleanor; Fusso, L. A.; Reixoux, D. A.; Cole, R. A.; Walsh, T. J.; Cakir, Recep; Clark, K. P.; Tepper, J. H.; Carson, R. J.; Pileggi, Domenico; Mahan, S. A., 2012, Geologic map of the Brinnon 7.5-minute quadrangle, Jefferson and Kitsap Counties, Washington: Washington Division of Geology and Earth Resources Map Series 2012-02, 1 sheet, scale 1:24,000, with 47 p. text. [http://www.dnr.wa.gov/Publications/ger_ms2012-02_geol_map_brinnon_24k.zip]
- Polenz, Michael; Wegmann, K. W.; Schasse, H. W., 2004, Geologic map of the Elwha and Angeles Point 7.5-minute quadrangles, Clallam County, Washington: Washington Division of Geology and Earth Resources Open File Report 2004-14, 1 sheet, scale 1:24,000. [http://www.dnr.wa.gov/Publications/ger_ofr2004-14_geol_map_elwha_angelespoint_24k.pdf]
- Rau, W. W., 1966, Stratigraphy and Foraminifera of the Satsop River area [part of Dry Bed Lakes, Gridale, Matlock, and Wynoochee Valley NE 7½' quadrangles], southern Olympic Peninsula, Washington: Washington Division of Mines and Geology, Bulletin 53, 66 p., 8 pl. [Fig. 2, scale 1:24,000?]. [http://www.dnr.wa.gov/publications/ger_b53_stratig_forman_satsoprivier.pdf]
- Reidel, S. P., 1978, Geology of the Saddle Mountains between Sentinel Gap and 119 degrees 30 minutes longitude: Rockwell Hanford Operations RHOBI-LD-4, 75 p., 4 plates, scale 1:24,000. [Beverly, Beverly SE, and south half of the Smyrna 7½' quadrangles]
- Rosengreen, T. E., 1965, Surficial geology of the Maple Valley and Hobart quadrangles, Washington: University of Washington Master of Science thesis, 71 p., 1 plate, scale 1:24,000. [http://www.dnr.wa.gov/Publications/ger_misc_geology_maple_valley_hobart_24k.pdf]
- Schasse, H. W.; Kalk, M. L.; Petersen, B. B.; Polenz, Michael, 2009, Geologic map of the Langley and western part of the Tulalip 7.5-minute quadrangles, Island County, Washington: Washington Division of Geology and Earth Resources Geologic Map GM-69, 1 sheet, scale 1:24,000. [http://www.dnr.wa.gov/Publications/ger_gm69_geol_map_langley_24k.pdf]
- Schasse, H. W.; Kalk, M. L.; Polenz, Michael, 2009, Geologic map of the Juniper Beach 7.5-minute quadrangle, Island and Snohomish Counties, Washington: Washington Division of Geology and Earth Resources Geologic Map GM-70, 1 sheet, scale 1:24,000. [http://www.dnr.wa.gov/publications/ger_gm70_geol_map_juniperbeach_24k.pdf]
- Schasse, H. W.; Logan, R. L., 1998, Geologic map of the Sequim 7.5-minute quadrangle, Clallam County, Washington: Washington Division of Geology and Earth Resources Open File Report 98-7, 22 p., 2 plates, scale 1:24,000. [http://www.dnr.wa.gov/publications/ger_ofr98-7_geol_map_sequim_24k.zip]
- Schasse, H. W.; Logan, R. L.; Polenz, Michael; Walsh, T. J., 2003, Geologic map of the Shelton 7.5-minute quadrangle, Mason and Thurston Counties, Washington: Washington Division of Geology and Earth Resources Open File Report 2003-24, 1 sheet, scale 1:24,000. [http://www.dnr.wa.gov/Publications/ger_ofr2003-24_geol_map_shelton_24k.pdf]
- Schasse, H. W.; Polenz, Michael, 2002, Geologic map of the Morse Creek 7.5-minute quadrangle, Clallam County, Washington: Washington Division of Geology and Earth Resources Open File Report 2002-8, 18 p., 2 plates, scale 1:24,000. [http://www.dnr.wa.gov/Publications/ger_ofr2002-8_geol_map_morsecreek_24k.zip]
- Schasse, H. W.; Slaughter, S. L., 2005, Geologic map of the Port Townsend South and part of the Port Townsend North 7.5-minute quadrangles, Jefferson County, Washington: Washington Division of Geology and Earth Resources Geologic Map GM-57, 1 sheet, scale 1:24,000. [http://www.dnr.wa.gov/Publications/ger_gm57_geol_map_porttownsends_24k.pdf]
- Schasse, H. W.; Wegmann, K. W., 2000, Geologic map of the Carlsborg 7.5-minute quadrangle, Clallam County, Washington: Washington Division of Geology and Earth Resources Open File Report 2000-7, 27 p., 2 plates, scale 1:24,000. [http://www.dnr.wa.gov/Publications/ger_ofr2000-7_geol_map_carlsborg_24k.zip]
- Schasse, H. W.; Wegmann, K. W.; Polenz, Michael, 2004, Geologic map of the Port Angeles and Ediz Hook 7.5-minute quadrangles, Clallam County, Washington: Washington Division of Geology and Earth Resources Open File Report 2004-13, 1 sheet, scale 1:24,000. [http://www.dnr.wa.gov/Publications/ger_ofr2004-13_geol_map_portangeles_edizhook_24k.pdf]
- Smith, Mackey, 1975, Preliminary surficial geologic map of the Edmonds East and Edmonds West quadrangles, Snohomish and King Counties, Washington: Washington Division of Geology and Earth Resources Geologic Map GM-14, 1 sheet, scale 1:24,000. [http://www.dnr.wa.gov/Publications/ger_gm14_geol_map_edmondseastwest_24k.pdf]
- Smith, Mackey, 1976, Preliminary surficial geologic map of the Mukilteo and Everett quadrangles, Snohomish County, Washington: Washington Division of Geology and Earth Resources Geologic Map GM-20, 1 sheet, scale 1:24,000. [http://www.dnr.wa.gov/Publications/ger_gm20_geol_map_mukiteoevertt_24k.pdf]
- Smith, Mackey, 1976, Surficial geology of northeast Tacoma, Pierce County, Washington: Washington Division of Geology and Earth Resources Open File Report 76-9, 1 sheet, scale 1:24,000. [Pierce County portions of the Tacoma North and Poverty Bay 7½' quadrangles] [http://www.dnr.wa.gov/Publications/ger_ofr76-9_geol_map_ne_tacoma_24k.pdf]
- Smith, Mackey, 1977, Geologic map of the city of Tacoma, Pierce County, Washington: Washington Division of Geology and Earth Resources Open File Report 77-9, 1 sheet, scale 1:24,000. [http://www.dnr.wa.gov/publications/ger_ofr77-9_geologic_map_tacoma_24k.pdf]
- Smith, M. T., 1991, Geologic strip map of the Ninemile Creek–Wilmont Creek–Hunters Creek area [part of Adams Mountain, Blackhorse Canyon, Cedonia, Friedlander Meadows, Frosty Meadows, Gold Mountain, Hunters, Keller, Kewa, Louie Creek, Miller Mountain, and Ninemile Flat 7½' quadrangles], Ferry and Stevens Counties, Washington: Washington Division of Geology and Earth Resources Open File Report 91-4, 9 p., 1 plate. [http://www.dnr.wa.gov/publications/ger_ofr91-4_ninemile_wilmont_hunters_creek_24k.pdf]
- Snavelly, P. D.; Niem, A. R.; MacLeod, N. S., 1989, Geology of the coastal area between Cape Flattery and Cape Alava [Cape Flattery, Makah Bay, and Ozette 7½' quadrangles], northwest Washington: U.S. Geological Survey Open-File Report OF-89141, 1 sheet, scale 1:24,000. [http://ngmdb.usgs.gov/Prodesc/proddesc_17582.htm]
- Swanson, D. A., 1989, Geologic maps of the French Butte and Greenhorn Buttes quadrangles, Washington: U.S. Geological Survey Open File Report 89-309, 25 p., 3 plates, scale 1:24,000.

- [http://ngmdb.usgs.gov/Prodesc/proddesc_17630.htm]
- Swanson, D. A., 1991, Geologic map of the Tower Rock quadrangle, southern Cascade Range, Washington: U.S. Geological Survey Open-File Report 91-314, 26 p., 2 plates, scale 1:24,000. [http://ngmdb.usgs.gov/Prodesc/proddesc_18117.htm]
- Swanson, D. A., 1992, Geologic map of the McCoy Peak quadrangle, southern Cascade Range, Washington: U.S. Geological Survey Open-File Report 92-336, 36 p., 2 plates, scale 1:24,000. [http://ngmdb.usgs.gov/Prodesc/proddesc_18287.htm]
- Swanson, D. A., 1993, Geologic map of the Blue Lake quadrangle, southern Cascade Range, Washington: U.S. Geological Survey Open-File Report 93-297, 34 p., 2 plates, scale 1:24,000. [<http://pubs.er.usgs.gov/usgspubs/ofr/ofr93297>]
- Swanson, D. A., 1994, Geologic map of the East Canyon Ridge quadrangle, southern Cascade Range, Washington: U.S. Geological Survey Open-File Report 94-591, 31 p., 2 plates, scale 1:24,000. [http://ngmdb.usgs.gov/Prodesc/proddesc_12558.htm]
- Swanson, D. A., 1996, Geologic map of the Packwood Lake quadrangle, southern Cascade Range, Washington: U.S. Geological Survey Open-File Report 96-704, 25 p., 2 plates, scale 1:24,000. [http://ngmdb.usgs.gov/Prodesc/proddesc_18682.htm]
- Swanson, D. A., 1996, Geologic map of the Hamilton Buttes quadrangle, southern Cascade Range, Washington: U.S. Geological Survey Open-File Report 96-16, 29 p., 2 plates, scale 1:24,000. [http://ngmdb.usgs.gov/Prodesc/proddesc_18565.htm]
- Swanson, D. A.; Moore, R. B.; Banks, N. G., 1997, Geologic map of the Packwood quadrangle, southern Cascade Range, Washington: U.S. Geological Survey Open-File Report 97-157, 18 p., 2 plates, scale 1:24,000. [http://ngmdb.usgs.gov/Prodesc/proddesc_18740.htm]
- Tabor, R. W.; Haeussler, P. J.; Haugerud, R. A.; Wells, R. E., 2011, Lidar-revised geologic map of the Uncas 7.5' quadrangle, Clallam and Jefferson Counties, Washington: U.S. Geological Survey Scientific Investigations Map 3160, 2 sheets, scale 1:24,000, with 9 p. text. [http://ngmdb.usgs.gov/Prodesc/proddesc_95299.htm]
- Tabor, R. W.; Haugerud, R. A.; Haeussler, P. J.; Clark, K. P., 2011, Lidar-revised geologic map of the Wildcat Lake 7.5' quadrangle, Kitsap and Mason Counties, Washington: U.S. Geological Survey Scientific Investigations Map 3187, 2 sheets, scale 1:24,000, with 12 p. text. [http://ngmdb.usgs.gov/Prodesc/proddesc_96384.htm]
- Troost, K. G.; Booth, D. B.; Wisler, A. P.; Shimel, S. A., 2005, The geologic map of Seattle [Duwamish Head, Seattle North and South, and Shilshole Bay 7½' quadrangles]—A progress report: U.S. Geological Survey Open-File Report 2005-1252, version 1.0, 1 sheet, scale 1:24,000. [http://ngmdb.usgs.gov/Prodesc/proddesc_72190.htm]
- Vine, J. D., 1962, Preliminary geologic map of the Hobart and Maple Valley quadrangles, King County, Washington: Washington Division of Mines and Geology Geologic Map GM-1, 1 sheet, scale 1:24,000. [http://www.dnr.wa.gov/Publications/ger_gm1_geol_map_hobartmaple_valley_24k.pdf]
- Vine, J. D., 1969, Geology and coal resources of the Cumberland, Hobart, and Maple Valley quadrangles, King County, Washington: U.S. Geological Survey Professional Paper 624, 67 p., 4 plates, scale 1:24,000. [http://ngmdb.usgs.gov/Prodesc/proddesc_4949.htm]
- Waldron, H. H., 1961, Geology of the Poverty Bay quadrangle, Washington: U.S. Geological Survey Geologic Quadrangle Map GQ-158, 1 sheet, scale 1:24,000. [http://ngmdb.usgs.gov/Prodesc/proddesc_607.htm]
- Waldron, H. H., 1962, Geology of the Des Moines quadrangle, Washington: U.S. Geological Survey Geologic Quadrangle Map GQ-159, 1 sheet, scale 1:24,000. [http://ngmdb.usgs.gov/Prodesc/proddesc_608.htm]
- Waldron, H. H., 1967, Geologic map of the Duwamish Head quadrangle, King and Kitsap Counties, Washington: U.S. Geological Survey Geologic Quadrangle Map GQ-706, 1 sheet, scale 1:24,000. [http://ngmdb.usgs.gov/Prodesc/proddesc_2014.htm]
- Walker, C. W., 1980, Geology and energy resources of the Roslyn–Cle Elum area [part of Cle Elum, Cle Elum Lake, Easton, Kachess Lake, Red Top Mountain, Ronald, and Teanaway 7½' quadrangles], Washington: Washington Division of Geology and Earth Resources Open File Report 80-1, 59 p., 25 plates [map no. 1A, scale 1:24,000]. [http://www.dnr.wa.gov/Publications/ger_ofr80-1_roslyn_cle_elum_coal_24k_pt1.pdf]
- Walsh, T. J.; Logan, R. L., 2005, Geologic map of the East Olympia 7.5-minute quadrangle, Thurston County, Washington: Washington Division of Geology and Earth Resources Geologic Map GM56, 1 sheet, scale 1:24,000. [http://www.dnr.wa.gov/Publications/ger_gm56_geol_map_eastolympia_24k.pdf]
- Walsh, T. J.; Logan, R. L.; Polenz, Michael, 2003, Geologic map of the McNeil Island 7.5-minute quadrangle, Pierce and Thurston Counties, Washington: Washington Division of Geology and Earth Resources Open File Report 2003-22, 1 sheet, scale 1:24,000. [http://www.dnr.wa.gov/Publications/ger_ofr2003-22_geol_map_mcneil_island_24k.pdf]
- Walsh, T. J.; Logan, R. L.; Polenz, Michael; Schasse, Henry W., 2003, Geologic map of the Nisqually 7.5-minute quadrangle, Thurston and Pierce Counties, Washington: Washington Division of Geology and Earth Resources Open File Report 2003-10, 1 sheet, scale 1:24,000. [http://www.dnr.wa.gov/Publications/ger_ofr2003-10_geol_map_nisqually_24k.pdf]
- Walsh, T. J.; Logan, R. L.; Schasse, H. W.; Polenz, Michael, 2003, Geologic map of the Tumwater 7.5-minute quadrangle, Thurston County, Washington: Washington Division of Geology and Earth Resources Open File Report 2003-25, 1 sheet, scale 1:24,000. [http://www.dnr.wa.gov/Publications/ger_ofr2003-25_geol_map_tumwater_24k.pdf]
- Whetten, J. T., 1980, Preliminary bedrock geologic map of the Chiwaukum 4 NW [Winton 7½'] quadrangle, Chiwaukum graben, Washington: U.S. Geological Survey Open-File Report 80-456, 7 p., 1 plate, scale 1:24,000. [http://ngmdb.usgs.gov/Prodesc/proddesc_11640.htm]
- Whetten, J. T., 1980, Preliminary bedrock geologic map of the Chiwaukum 4 SE [Peshastin 7½'] quadrangle, Chiwaukum graben, Washington: U.S. Geological Survey Open-File Report 80-723, 5 p., 1 plate, scale 1:24,000. [http://ngmdb.usgs.gov/Prodesc/proddesc_11748.htm]
- Whetten, J. T., 1980, Preliminary bedrock geologic map of the east half of the Chiwaukum 4 SW [Leavenworth 7½'] quadrangle, Chiwaukum graben, Washington: U.S. Geological Survey Open-File Report 80-616, 6 p., 1 plate, scale 1:24,000. [http://ngmdb.usgs.gov/Prodesc/proddesc_11714.htm]
- Whetten, J. T.; Dethier, D. P.; Carroll, P. R., 1979, Preliminary geologic map of the Clear Lake NE [Haystack Mountain 7½'] quadrangle, Skagit County, Washington: U.S. Geological Survey Open-File Report 79-1468, 10 p., 2 plates, scale 1:24,000. [<http://pubs.er.usgs.gov/usgspubs/ofr/ofr791468>]
- Whetten, J. T.; Dethier, D. P.; Carroll, P. R., 1980, Preliminary geologic map of the Clear Lake NW [Sedro-Woolley South 7½'] quadrangle, Skagit County, Washington: U.S. Geological Survey Open-File Report 80-247, 13 p., 2 plates, scale 1:24,000. [http://ngmdb.usgs.gov/Prodesc/proddesc_11569.htm]
- Whetten, J. T.; Dethier, D. P.; Carroll, P. R., 1979, Preliminary geologic map of the Clear Lake NE quadrangle [Haystack Mountain 7½' quadrangle], Skagit County, Washington: U.S. Geological Survey Open-File Report 79-1468, 10 p., 2 plates, scale 1:24,000. [http://ngmdb.usgs.gov/Prodesc/proddesc_11156.htm]
- Whetten, J. T.; Laravie, J. A., 1976, Preliminary geologic map of the Chiwaukum 4 NE [Van Creek 7½'] quadrangle, Chiwaukum graben, Washington: U.S. Geological Survey Miscellaneous Field Studies Map MF-794, 1 sheet, scale 1:24,000. [http://ngmdb.usgs.gov/Prodesc/proddesc_3965.htm]
- Whetten, J. T.; Waitt, R. B., Jr., 1978, Preliminary geologic map of the Cashmere quadrangle, Chiwaukum lowland, Washington: U.S. Geological Survey Miscellaneous Field Studies Map MF-908, 1 sheet, scale 1:24,000. [http://ngmdb.usgs.gov/Prodesc/proddesc_6726.htm]
- Wilson, J. R., 1980, Preliminary geologic map of the Boyds quadrangle, Ferry and Stevens Counties, Washington: U.S. Geological Survey Open-File Report 80-983, 2 sheets, scale 1:24,000. [http://ngmdb.usgs.gov/Prodesc/proddesc_11847.htm]
- Wilson, J. R., 1981, Geologic map of the Bangs Mountain quadrangle, Ferry and Stevens Counties, Washington: U.S. Geological Survey Open-File Report 81-581, 2 sheets, scale 1:24,000. [http://ngmdb.usgs.gov/Prodesc/proddesc_12087.htm]
- Wunder, J. M., 1976, Preliminary geologic map of the Utsalady quadrangle, Skagit and Snohomish Counties, Washington: Washington Division of Geology and Earth Resources Open File Report 76-10, 1 sheet, scale 1:24,000. [http://www.dnr.wa.gov/Publications/ger_ofr76-10_geol_map_utsalady_24k.pdf]
- Yates, R. G., 1961, Geology of part of the Boundary and Spirit quadrangles, Stevens County, Washington: U.S. Geological Survey Open-File Report 61-175, 1 plate. (Also published as USGS map I-412.) [http://ngmdb.usgs.gov/Prodesc/proddesc_53895.htm]