

## Naneum Ridge to Columbia River recreation plan

The Washington State Departments of Natural Resources (DNR) and Fish and Wildlife (WDFW) are working together to create a joint recreation plan for a state forest and 3 state wildlife areas that cover more than 230,000 acres in Kittitas and Chelan counties. When completed, the plan will guide recreation management for the next 10 to 15 years in the DNR-managed Naneum Ridge State Forest and the WDFW-managed Colockum, Quilomene, and Whiskey Dick wildlife areas. The two agencies are developing the plan with help from recreation groups, local officials, and other interested residents and organizations. A citizen advisory planning committee has been established to work with the agencies and give draft recommendations for the recreation plan.

In April 2012, DNR kicked off a comprehensive planning process for the sustainable management of recreation in the Naneum Ridge State Forest, a block of state trust lands located between Ellensburg and Wenatchee on the eastern slopes of the Cascade Mountains. In June 2012, DNR and WDFW agreed to create a joint recreation management plan that would include WDFW's Colockum, Quilomene, and Whiskey Dick wildlife areas.

Recreation use is expected to increase in the Naneum Ridge to Columbia River planning area. DNR and WDFW are proactively planning for the future of the area with a long-range vision.

### Why are DNR and WDFW developing recreation plans for the Naneum Ridge to Columbia River area?

The Naneum Ridge to Columbia River planning area offers tremendous opportunities for outdoor recreation in central Washington. These lands have a pressing need for well-planned recreation facilities that can be sustainably managed and maintained.

The Naneum Ridge to Columbia River area is distinct with a ridge, meadows, rivers, and a shrub-steppe landscape, making the area a haven for outdoor recreation enthusiasts—in all seasons. The planning area currently has no developed facilities such as campgrounds, but it does attract diverse recreation interests such as hunting, fishing, horseback riding, hiking, snowmobiling, sight-seeing, picnicking, and driving on the 'green dot' road system.



Comprehensive recreation planning in the area will improve public access and safety; expand recreation opportunities; better protect natural resources, water quality, and habitats; ensure timber revenue for schools; and maintain healthy ecosystems.

### Balancing wildlife protection and recreation in WDFW-managed wildlife areas

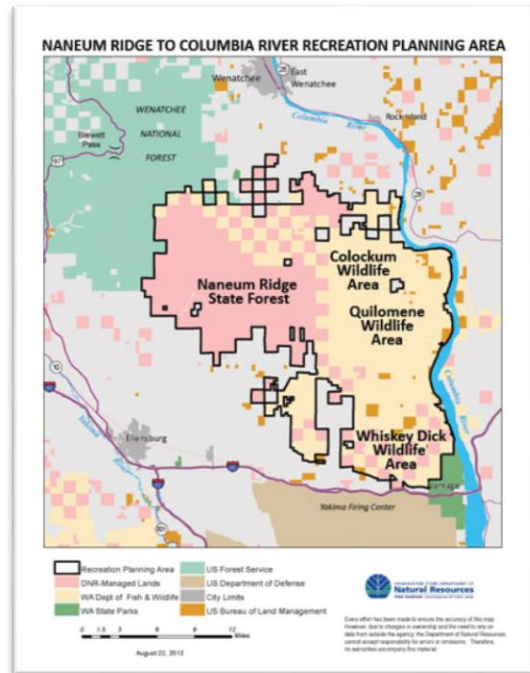
WDFW owns and manages more than 900,000 acres for conservation and recreation access. WDFW's mission is to preserve, protect and perpetuate fish, wildlife and ecosystems while providing sustainable fish and wildlife recreational and commercial opportunities.

## Recreation in DNR-managed Naneum Ridge State Forest

As a recreation provider, DNR's goal is to offer enjoyable, safe, and sustainable recreation opportunities that are compatible with their primary obligation as manager of nearly 3 million acres of state trust lands and more than 145,000 acres of natural areas throughout Washington. The new Naneum Ridge to Columbia River Recreation Plan will need to be compatible with DNR's trust obligations.

### Public involvement is key to planning effort

DNR and WDFW will use science and public input to make recreation management decisions. During the planning process, citizens will help identify recreational issues and needs. In addition, the citizen-based advisory planning committee will work to develop draft recommendations for the sustainable management of recreation in the state forest and wildlife areas. The public will be able to comment on the draft plan throughout the planning process and during the State Environmental Policy Act (SEPA) review process.



### About the planning area

The Naneum Ridge to Columbia River planning area encompasses 131,000 acres of DNR-managed state trust lands and 100,000 acres of WDFW-managed wildlife areas. Wenatchee National Forest, located to the north and west of Naneum State Forest, is owned and managed by the US Forest Service. Ellensburg is located approximately 8 miles to the south of the forest, with Wenatchee being 10 miles to the north of the forest.

The Naneum Ridge to Columbia River recreation planning effort will focus primarily on recreation development opportunities in the state forest and wildlife areas. However, DNR and WDFW also plan to explore opportunities for improved recreation access connections with landscapes managed by other state and federal agencies.

### Estimated planning timeline

- Open houses held April 25 & 26, 2012
- First meeting of the recreation planning committee – June 2012
- Draft plan available and SEPA review – Summer 2013
- Final plan available – Summer 2013
- Implementation – Fall 2013

### How to get involved and stay informed

The recreating public and other stakeholders will have a number of opportunities to participate in the Naneum Ridge to Columbia River recreation planning process, such as attending public meetings, completing an online survey, and serving on the recreation planning committee, or keeping in touch with DNR staff by sending an email to [naneumridgerecplan@dnr.wa.gov](mailto:naneumridgerecplan@dnr.wa.gov).

Look for updates about the planning process online at:

[www.dnr.wa.gov/RecreationEducation/Topics/RecreationPlanning/Pages/amp\\_rec\\_naneum\\_rec\\_planning.aspx](http://www.dnr.wa.gov/RecreationEducation/Topics/RecreationPlanning/Pages/amp_rec_naneum_rec_planning.aspx)