

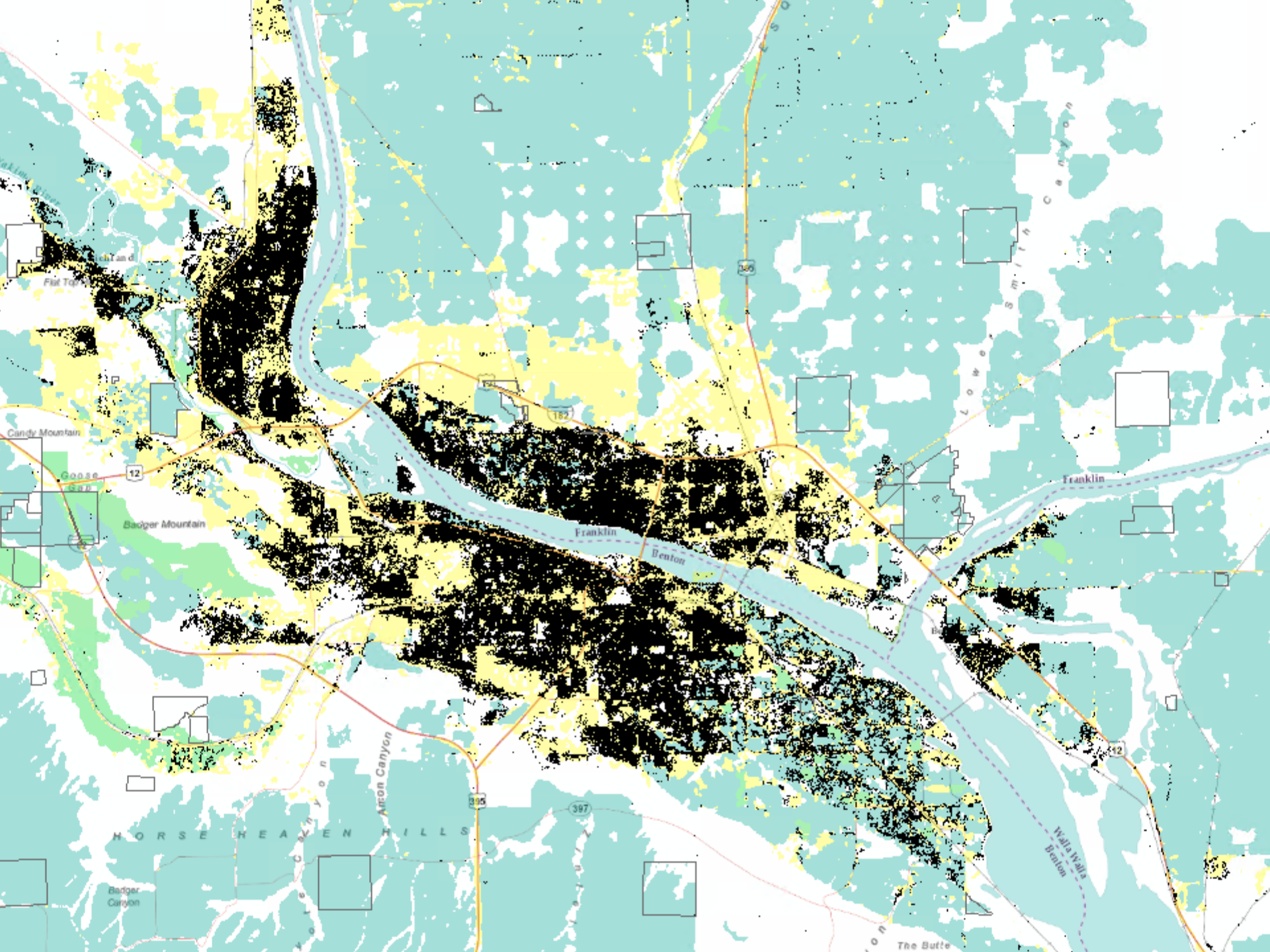


Board of Natural Resources Tour Recap



The Basin





Phil Town
Candy Mountain

Goose Lake
Badger Mountain

HORSE HEAVEN HILLS

Badger Canyon

Arcan Canyon

397

150

395

12

Franklin

Benton

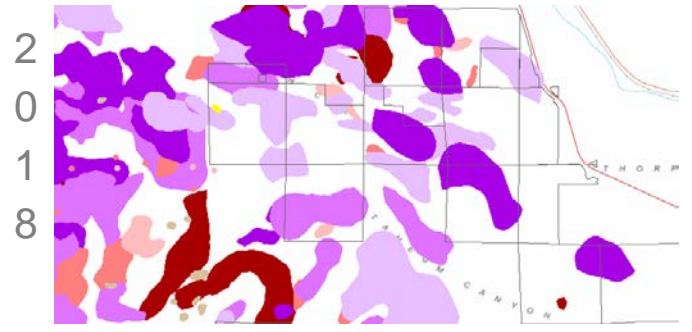
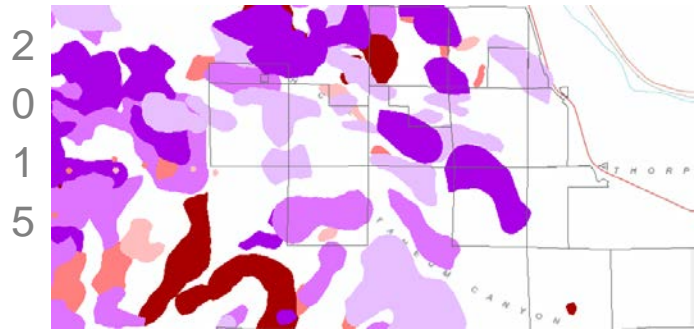
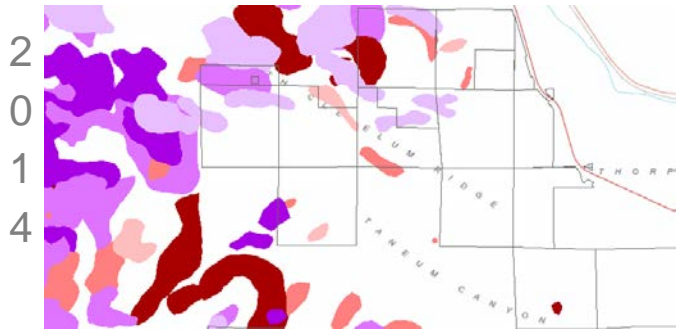
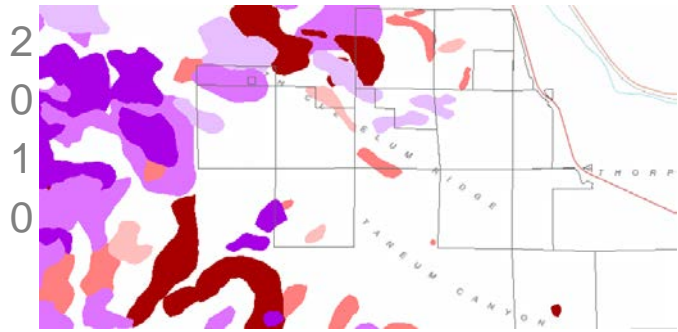
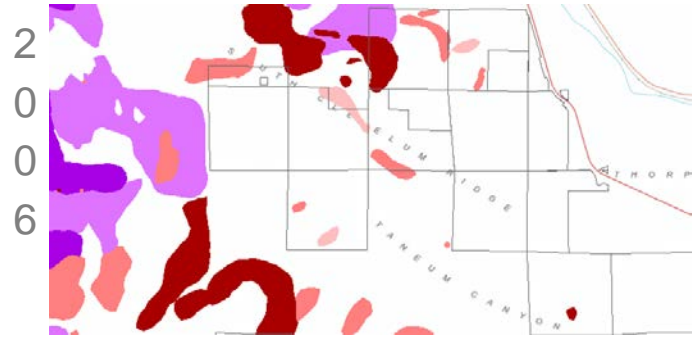
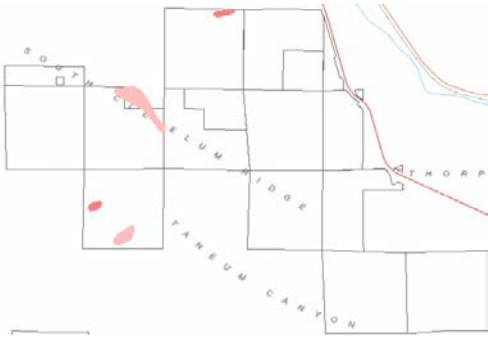
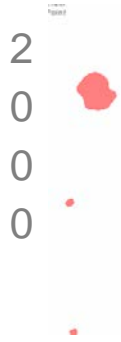
Franklin

Walla Walla
Benton

The Butte

The Forest





Ask

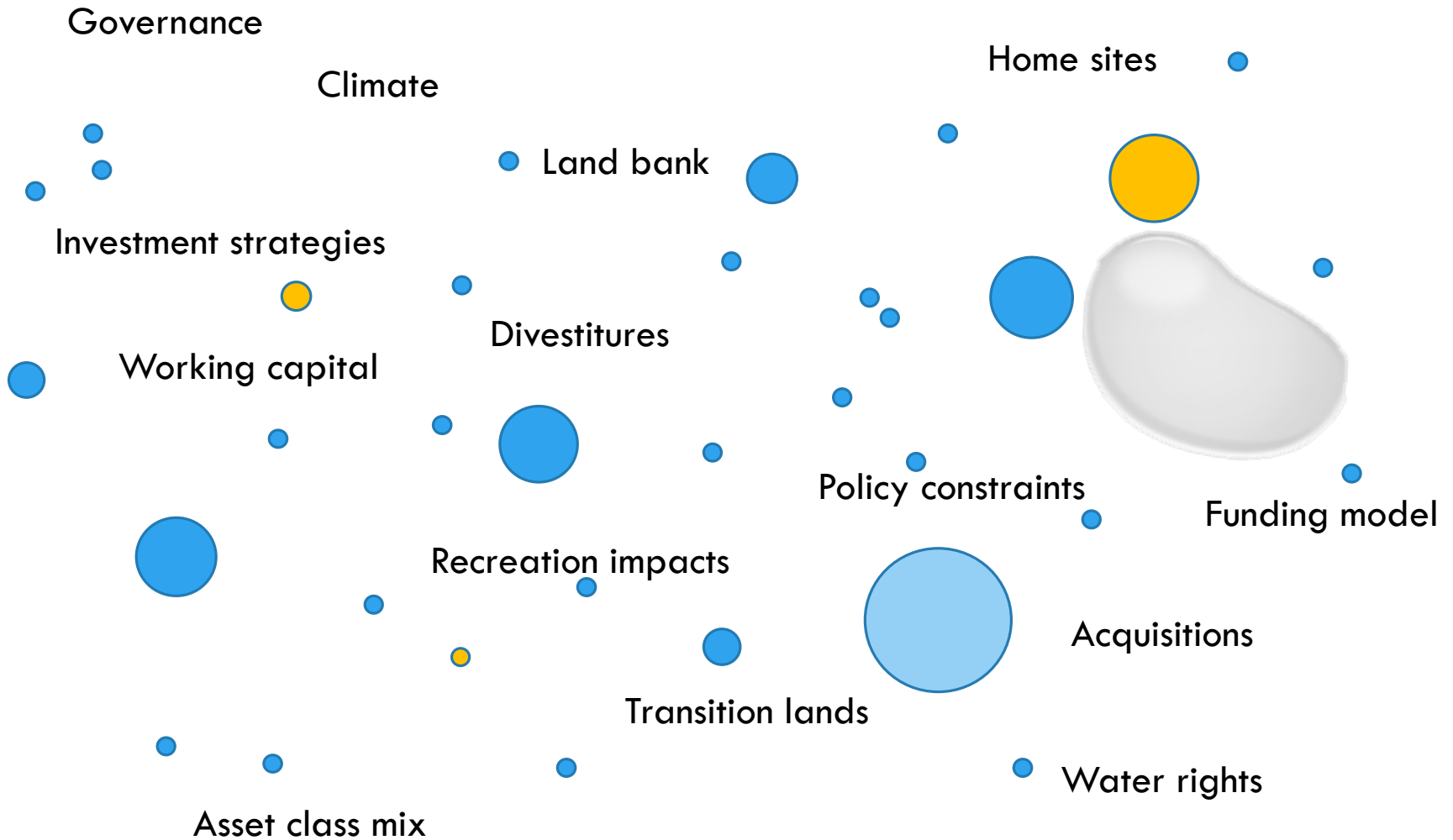
- What can the Board do to help
- What resources are needed

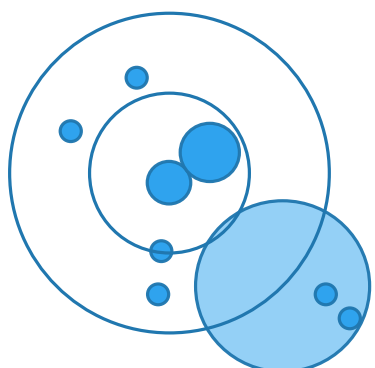
Contemplate

- Our policy framework
- Our funding model
- Our duty to the trusts
- Our asset portfolio

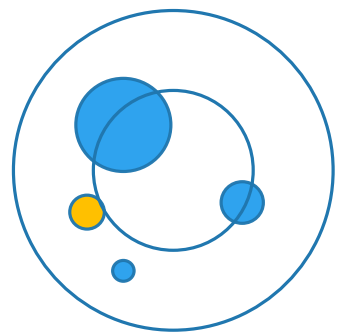


Buy first

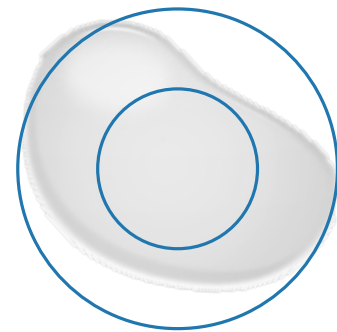




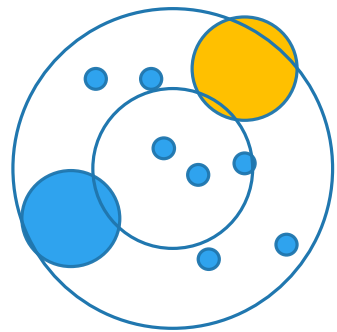
Policy statements



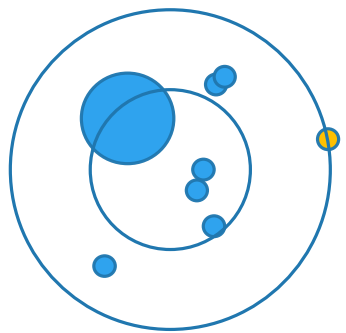
Portfolio management



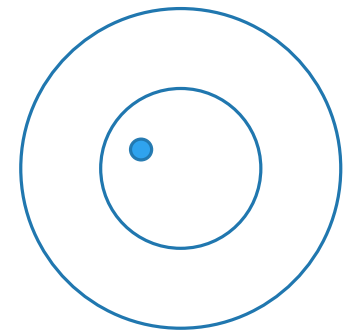
Funding



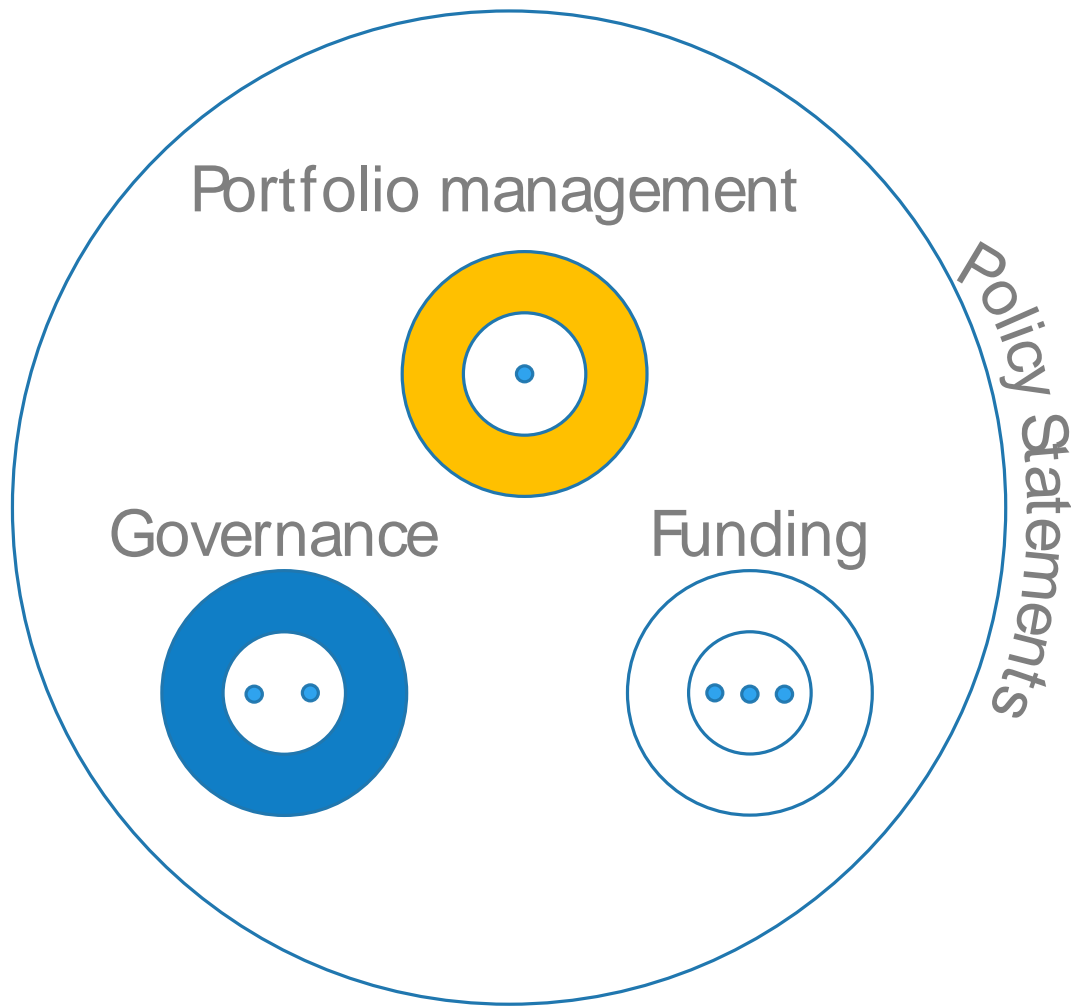
Governance



Sales of valuable materials



Leasing process



- . Balance of the asset classes
- . Acquisition/divestiture reform and strategies



- ... Investment prudence, protocol and strategies



- ... Modernization of funding for direct and indirect costs
- ... Access to working capital for investments



FALL BNR SCHEDULE

MARBLED MURRELET LTCS AND SUSTAINABLE HARVEST CALCULATION

August	(No meeting)
September	What is DNR's HCP? Why are we amending the HCP now? Overview of the development of the HCP amendment/ LTCS
October	Development of the EIS Alternatives and Amendment Overview of marbled murrelet Final EIS (released in September)
November	Why do we calculate a sustainable harvest level? Arrearage and Riparian – What are these decisions and how are they related to the sustainable harvest calculation? Overview of USFWS take permit decision and SHC Final EIS (both released in October)
December	Decision on HCP Amendment and Sustainable Harvest Calculation

FALL BNR SCHEDULE

FULL PLANNED AGENDA

September	Review of marbled murrelet decision (part 1)	<u>TLPA</u> : Introduction of funding model options; Introduction to commercial/transition lands properties <u>Other</u> : Budget and leg 2020 update
October	Review of marbled murrelet decision (part 2) Overview of Final EIS (released in September)	<u>TLPA</u> : Introductions of portfolio management options; Board preference for funding model <u>Other</u> : Policy discussion on when to change land use from timber to conservation?
November	Review of SHC decision Overview of USFWS take permit decision and SHC Final EIS (both released in October)	<u>TLPA</u> : Board preference for balanced portfolio management – what is the right mix of assets? <u>Other</u> : TBD
December	Decision on HCP Amendment and Sustainable Harvest Calculation	TLPA: Preferred funding model analysis; Reporting benchmarks by asset class <u>Other</u> : TBD

