

**Elk River**

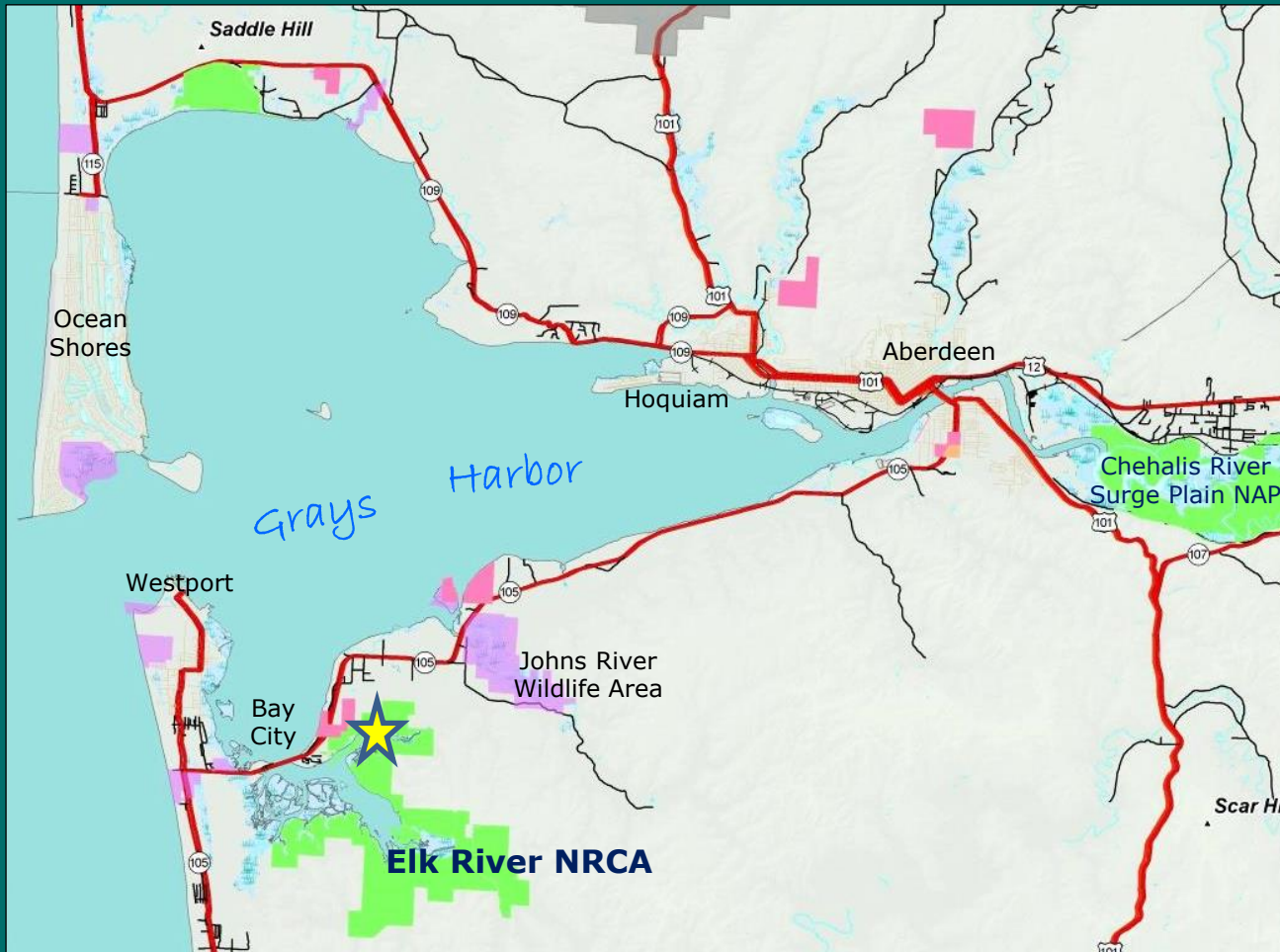
**Trust Land Transfer**

**02-090359**

**Grays Harbor County**



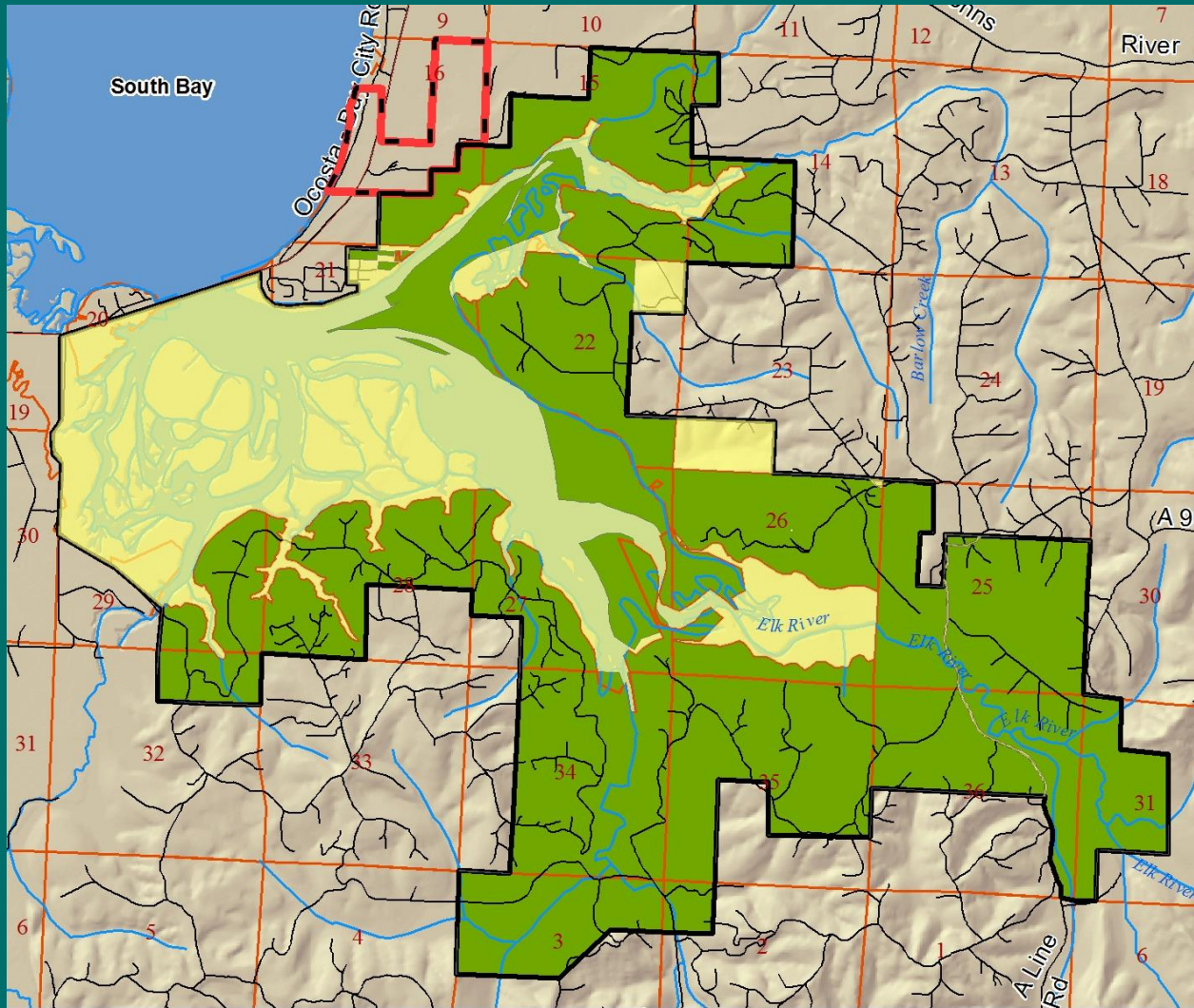
# Elk River Trust Land Transfer



Located near  
Westport in  
Grays Harbor  
County

South Bay of  
Grays Harbor

# Elk River Trust Land Transfer



**Western edge of  
the 5,413 acre Elk  
River NRCA**

**Elk River NRCA  
boundary recently  
expanded**

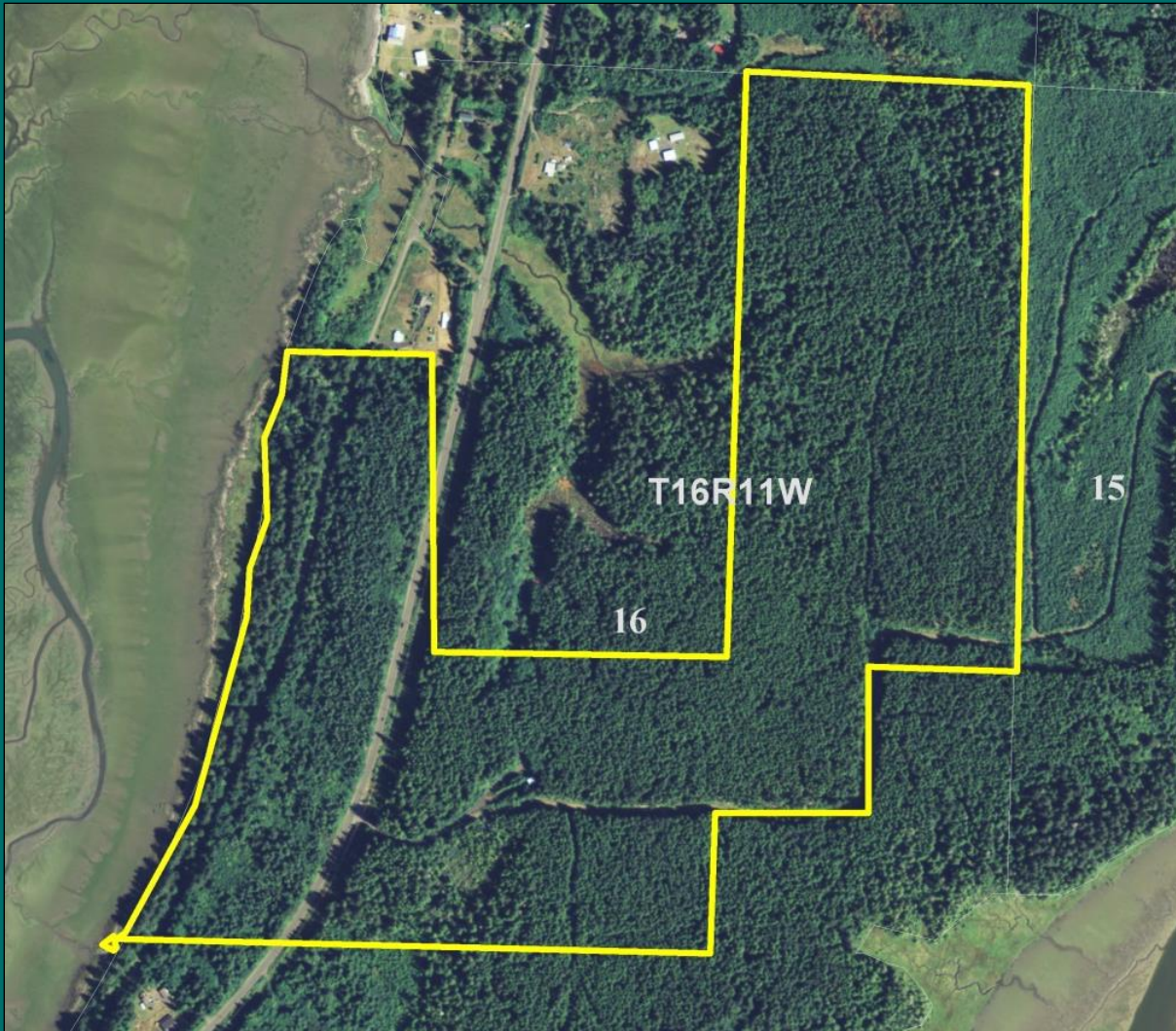
# Elk River Trust Land Transfer



**Elk River NRCA is  
the largest and  
highest quality  
intact estuarine  
system in WA and  
OR**

**Western  
Hemisphere  
Shorebird Reserve  
Network site**

# Elk River Trust Land Transfer



**Common  
School Trust**

**194.18 acres**

**Second growth  
WH, SS**

# Elk River Trust Land Transfer

## Appraised Value of Transfer Property

<b>Timber</b>	<b>(4,218 MBF)</b>	<b>\$ 1,631,000</b>	<b>\$ 387 /MBF</b>
<b>Land &amp; Reprod</b>	<b>(194.18 acres)</b>	<b>\$ 349,000</b>	<b>\$ 1,797/acre</b>
<b>TOTAL</b>		<b>\$ 1,980,000</b>	<b>\$ 10,197/acre</b>

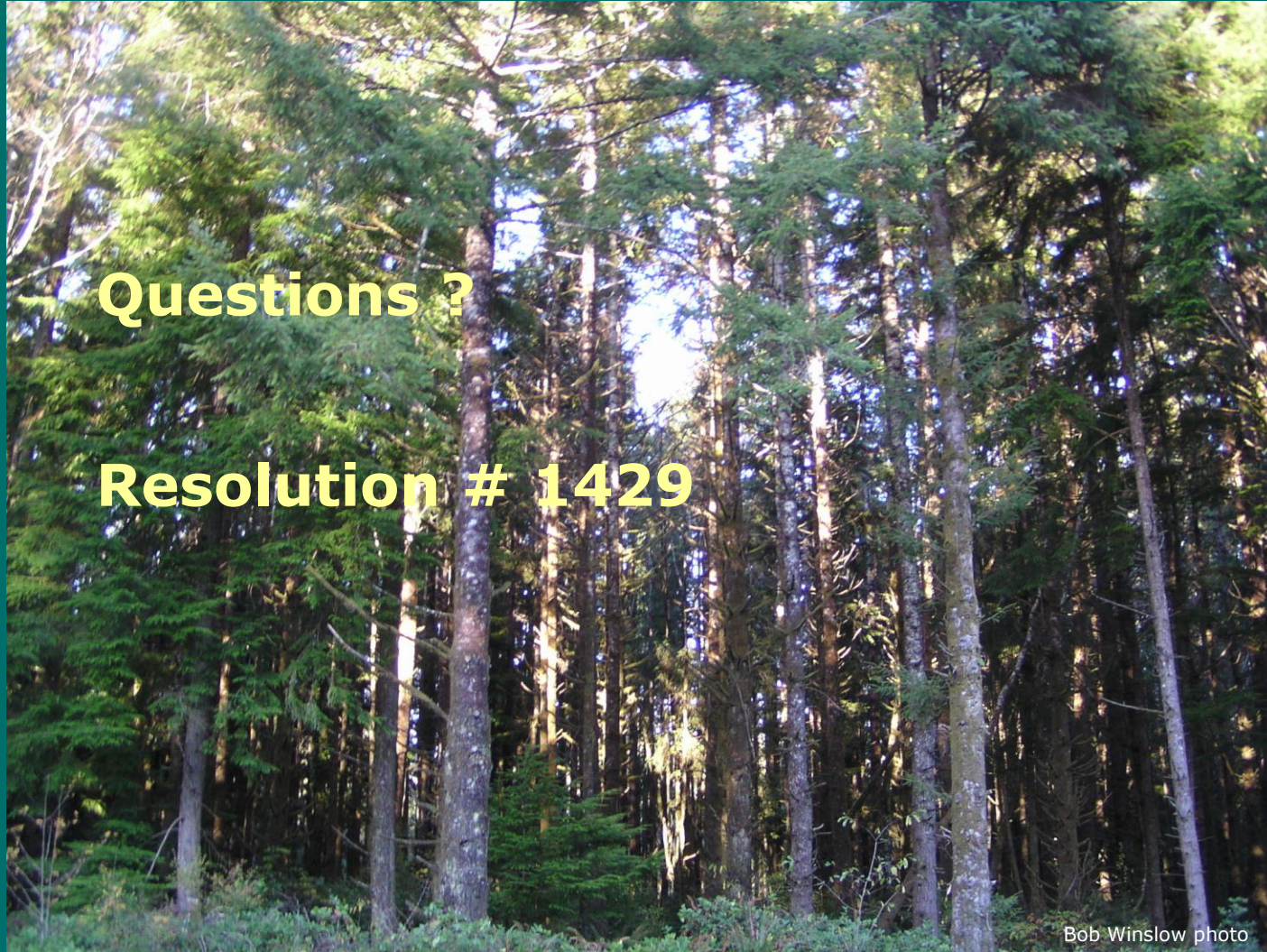
## Distribution of Funds

**Timber Value - Common School Construction Account**

**Land Value - Real Property Replacement Account**



# Elk River Trust Land Transfer



Questions ?

Resolution # 1429

Bob Winslow photo



WASHINGTON STATE DEPARTMENT OF  
**Natural Resources**

---

**Peter Goldmark** - Commissioner of Public Lands