



Cherry Gardens

Acquisition

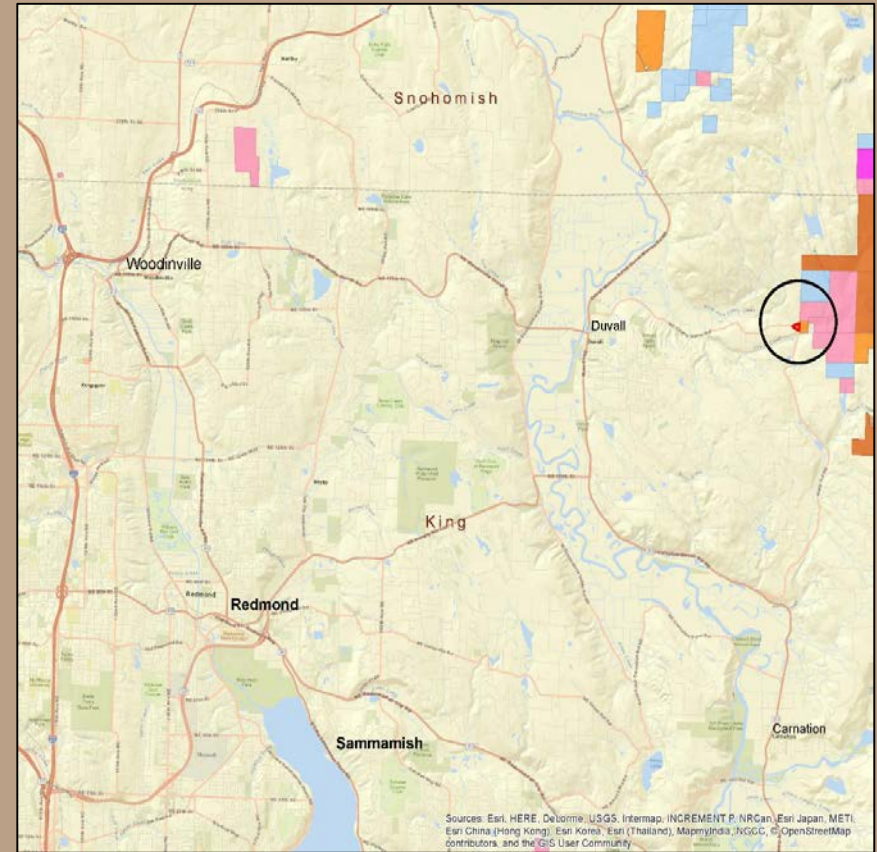
King County



Cherry Gardens

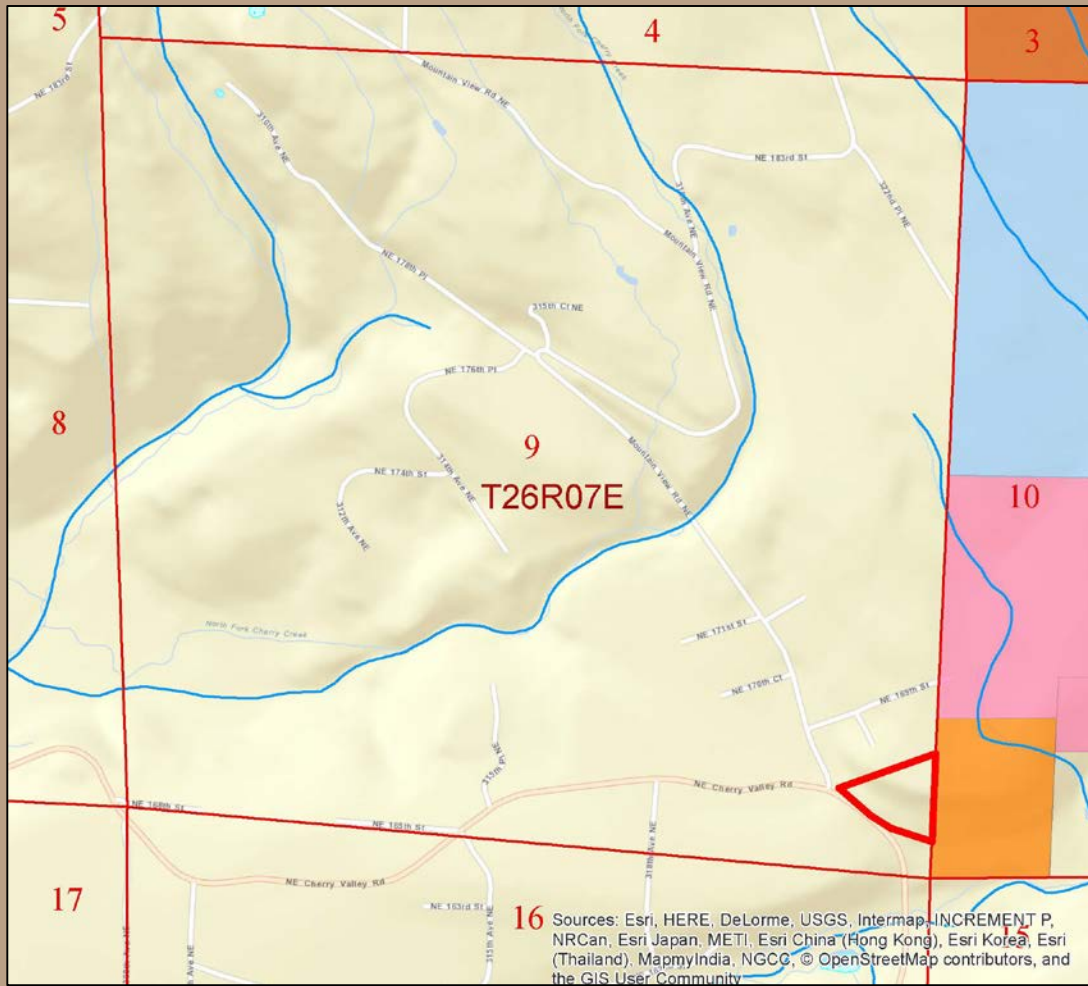
5.5 Acres

King County






Cherry Gardens

History



- Was Common School Trust
- Sold in 2007 to King County Fire District
- DNR held first right of refusal

-  Common School Trust
-  Community College Trust
-  Subject Parcel (Will return to Common School Trust)

Cherry Gardens

Purpose

This acquisition will maintain a major haul route out of the Marckworth Forest and prevent residential development.



Cherry Gardens

Appraised Value

- Appraised Market Value = at least \$190,000
- DNR will purchase for \$190,000
- Funds will come from Real Property Replacement Account
- Property will return to Common School Trust

Cherry Gardens

The Department requests approval of
Resolution# 1500



