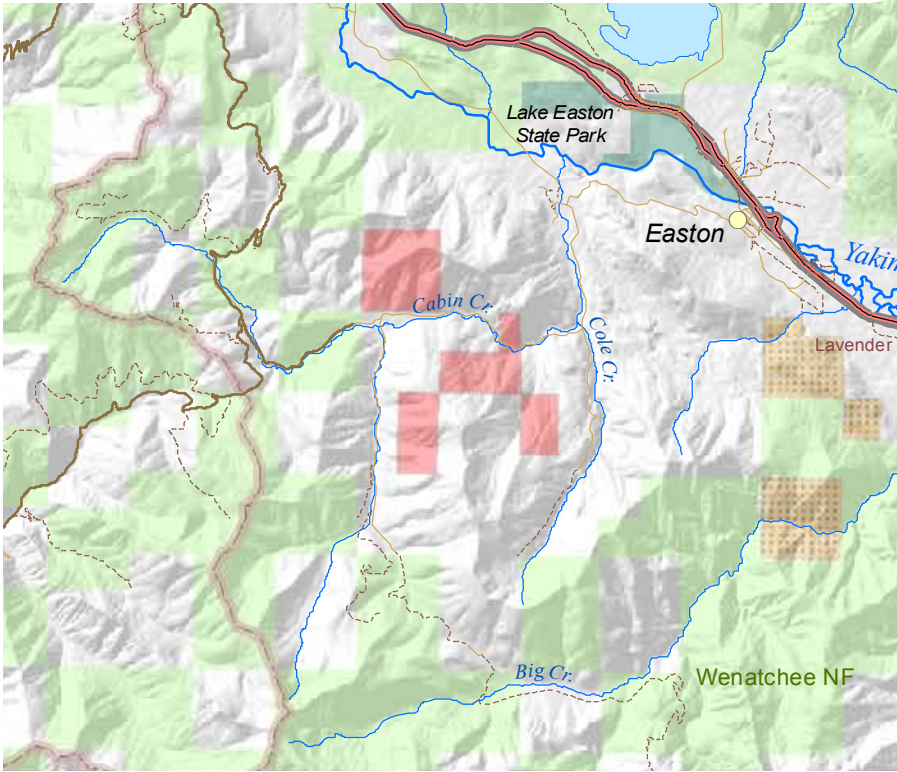
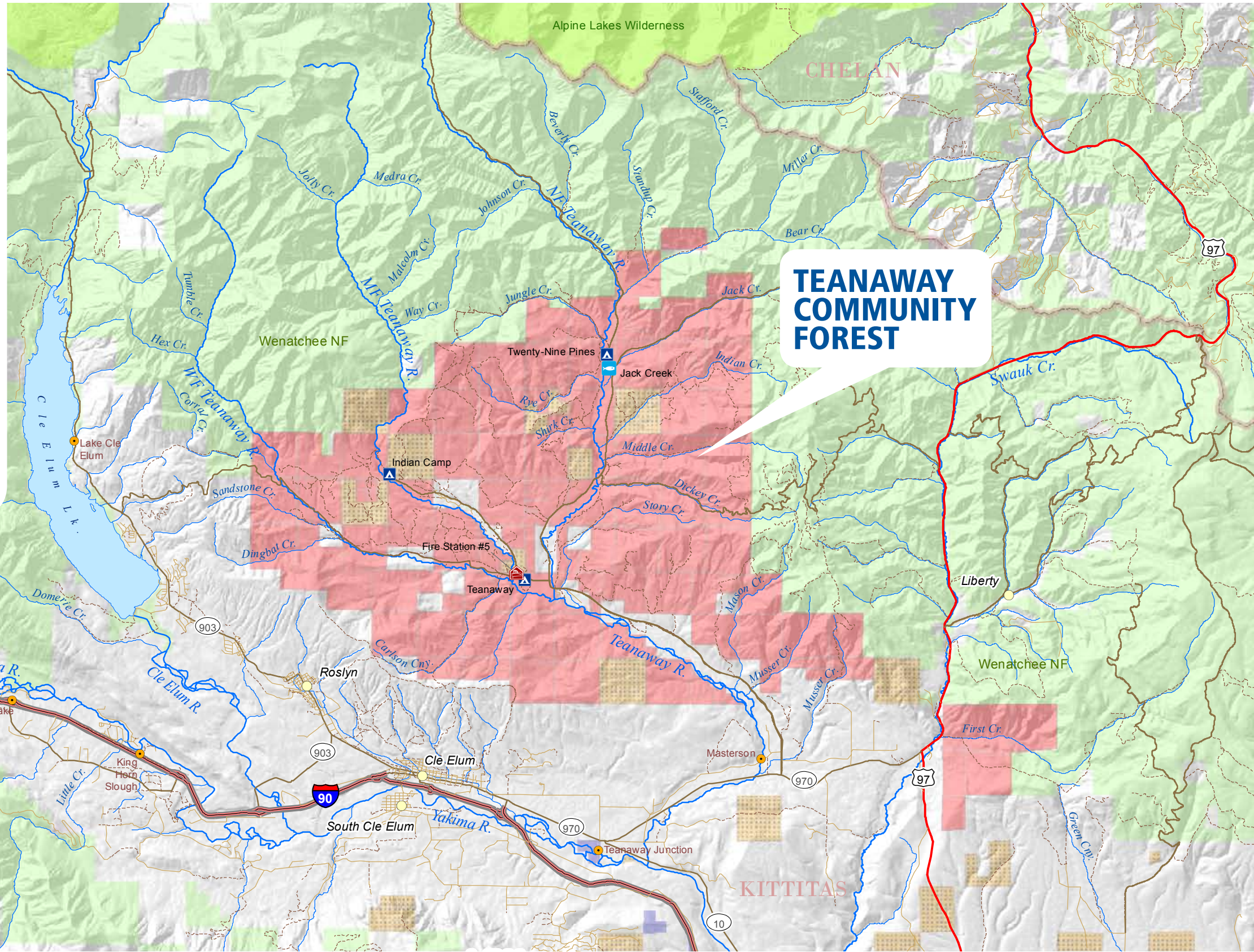


# TEANAWAY COMMUNITY FOREST

The Teanaway Community Forest is a 50,272-acre forest situated at the headwaters of the Yakima Basin watershed. The forest will be managed through a partnership between the Washington state departments of Natural Resources (DNR) and Fish & Wildlife, with input from the local community and interested stakeholders.

DNR designed the community forest model, which was approved by state lawmakers in 2011. The model is a tool to involve local citizens in protecting working forests that support healthy communities through grazing, forestry, recreation, and conservation.

The Teanaway property was identified as part of the Yakima Basin Integrated Plan as an area of importance to safeguard the Yakima Basin water supply and associated habitat, and to support the economy by preserving working lands and enhancing recreation opportunities. The Basin Plan was developed by a coalition of public and private organizations committed to increasing the quantity and quality of water in the Yakima River Basin.



## FACILITIES

- Building
- Campground
- Acclimation Pond
- WDFW Water Access Sites

## ROADS

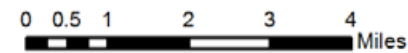
- Interstate
- Major Highway
- Road
- Local Road
- Unimproved Road

## HYDROGRAPHY

- Rivers
- Streams

## LAND MANAGEMENT

- Teanaway Community Forest
- Washington Dept. of Natural Resources
- USFS Wilderness Areas
- US Forest Service
- Washington State Parks
- Washington Dept. of Fish & Wildlife



## LEARN MORE

<http://bit.ly/teanaway>

