



MMLTCS

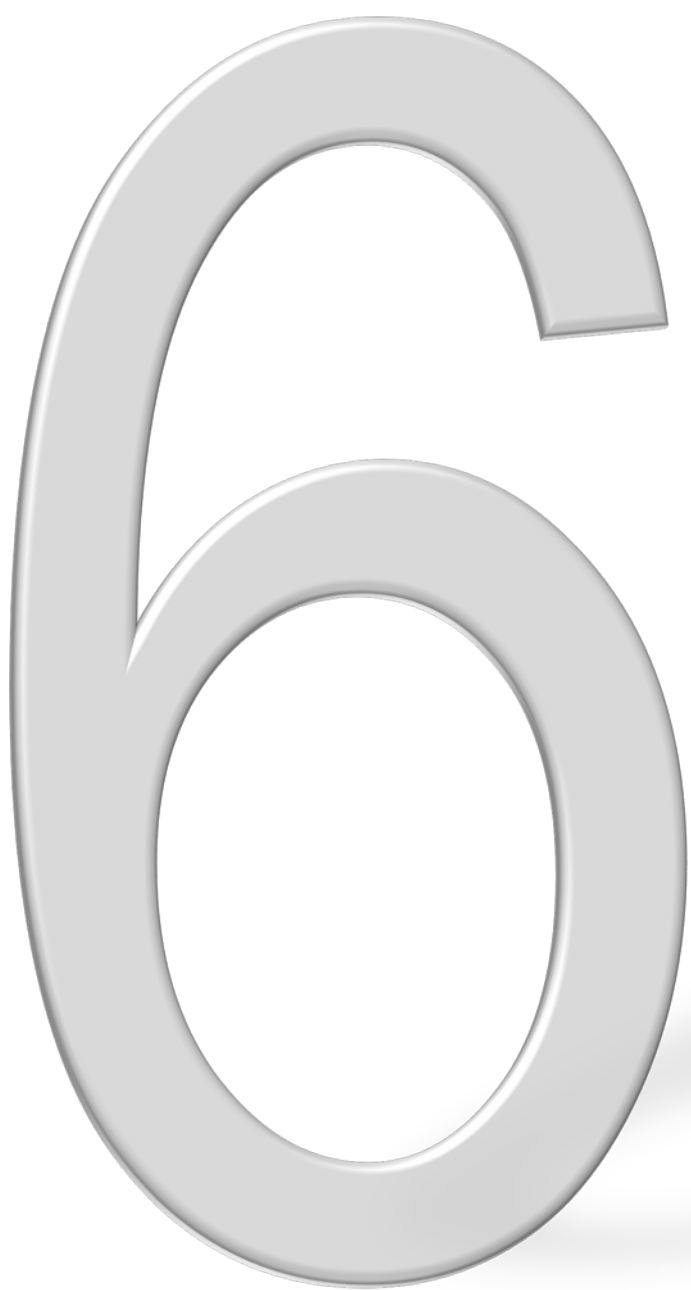
Marbled Murrelet Long Term Conservation Strategy

Presented by:

Peter Harrison

Washington Department of Natural Resources

January 10, 2017



alternatives

Major differences:

Overall acres of conservation

Location and configuration of conservation areas

Conservation Measures



Conservation Measures

New measures proposed to protect murrelets from
harm and harassment



Harm and Harassment

Susceptible to Auditory and Visual Disturbance

- Delays or prevents nest establishment
- Flushes birds from active nest sites
- Causes adults to abort a feeding attempts
- Increases risk of predation

Resulting in reduced hatching success, individual fitness, or survival of chicks, juveniles, and adults.

Nesting Season: April 1 to Sept 23

Daily timing restrictions: 1 hour before sunrise and 2 hours after sunset



Conservation Measures

Applied to a variety of land uses:

- Timber management and timber harvest
- Road-building and maintenance
- Wildfire control
- Research
- Recreation
- Utility transportation corridors
- Tribal and Cultural Uses
- Forest health treatments and salvage



Conservation Measures

Recreation:

A

No Action Alternative

C, D

No development of any new or expanded recreation facilities, trails, and recreation leases in special habitat areas, occupied sites, and their buffers, including the 0.5-mile occupied site buffer within emphasis areas.

B, E, F

Require consultation with USFWS for any new or expanded development inside certain sensitive areas.

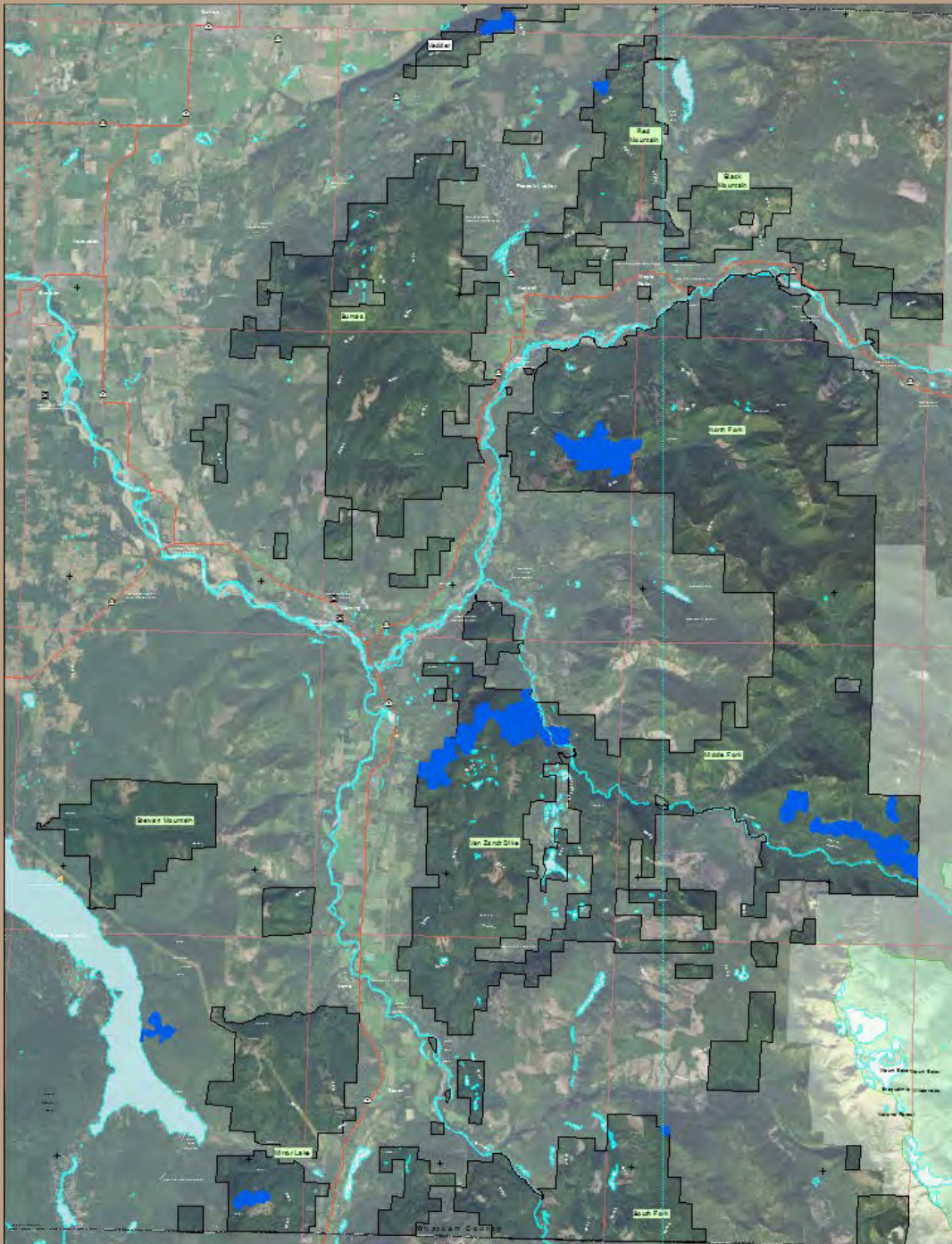
Alternatives



Alternative A

No Action Alternative

**No new
Conservation
Measures**

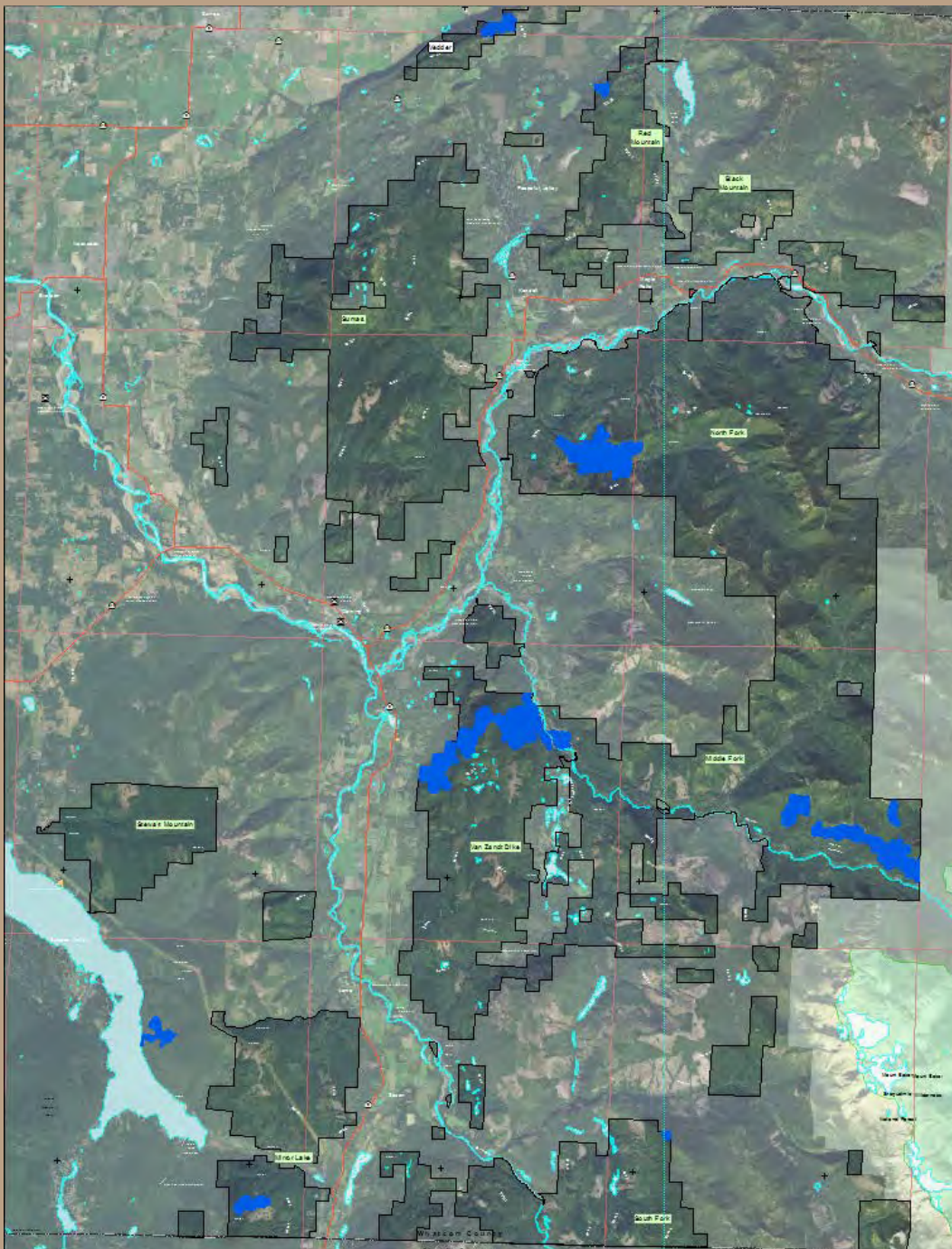


Alternative B

Requires Consultation

Occupied Sites

- All new or expanded recreation facilities, trails and recreation leases in occupied sites and buffers will be evaluated by DNR for impacts.
- If impacts are identified, and DNR pursues these activities, DNR will consult with USFWS.
- Design may be restricted or conditioned to avoid, minimize and mitigate murrelet impacts.
- All activities in occupied sites and their buffers will follow daily timing restrictions during the nesting season, or take place outside the nesting season when feasible.



Alternative C

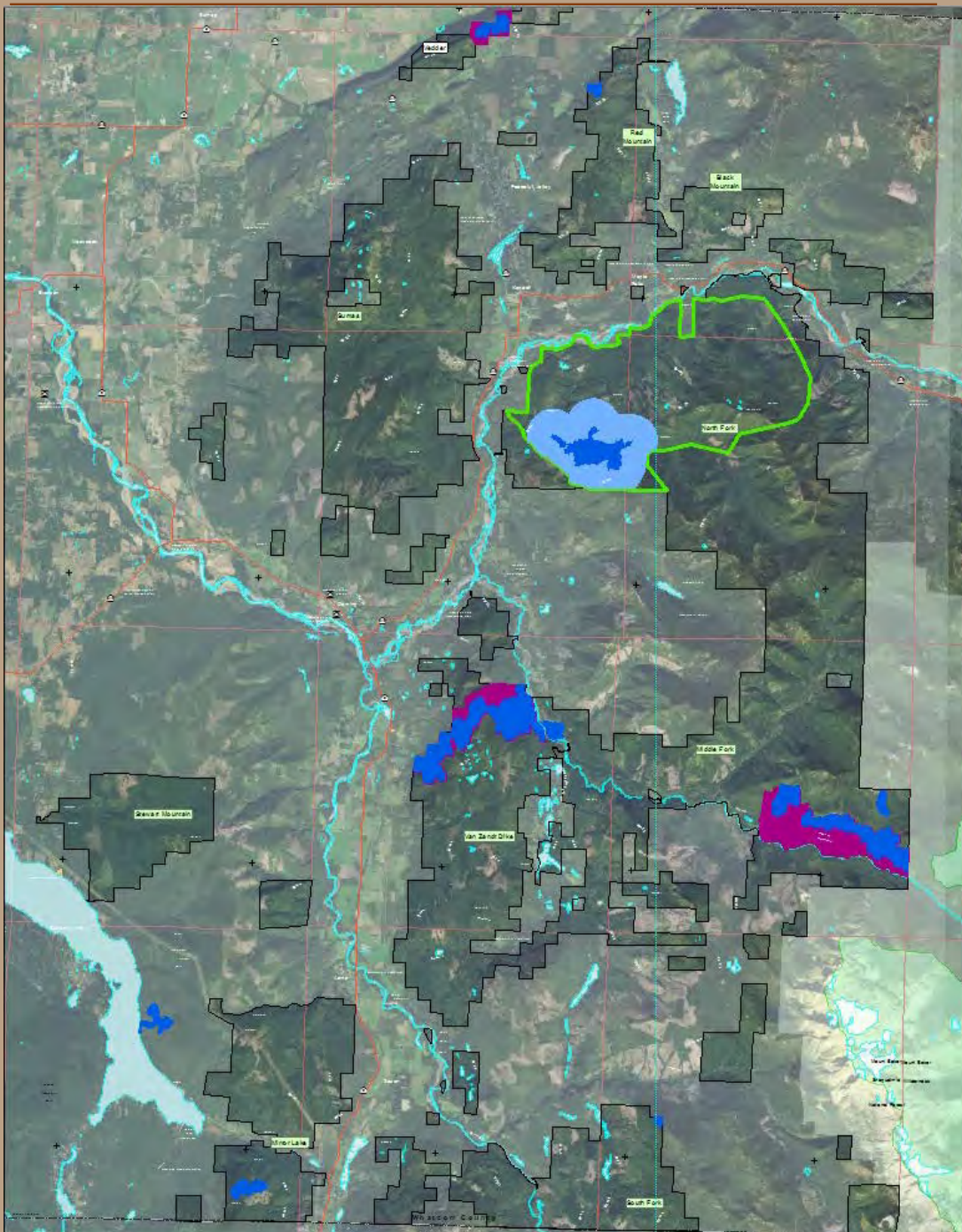
No Development

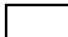


Occupied Sites & Buffers

Emphasis Areas

Special Habitat Areas

- No development of any new or expanded recreation facilities, trails and recreation leases in Special Habitat Areas, occupied sites and their buffers, including the 0.5 mile occupied site buffer within Emphasis Areas
- No conversion of any existing non-motorized trails to motorized use within those areas.
- Maintenance or improvements within the footprint of existing facilities, trails and recreation leases would be allowed. These activities would take place outside of the nesting season, or follow daily timing restrictions during the nesting season.



-  Baker to Bellingham Planning Area
-  Occupied Site and Buffer
-  0.5 Mile Occupied Buffer in Emphasis Area
-  Special Management Area
-  Emphasis Areas

Alternative D

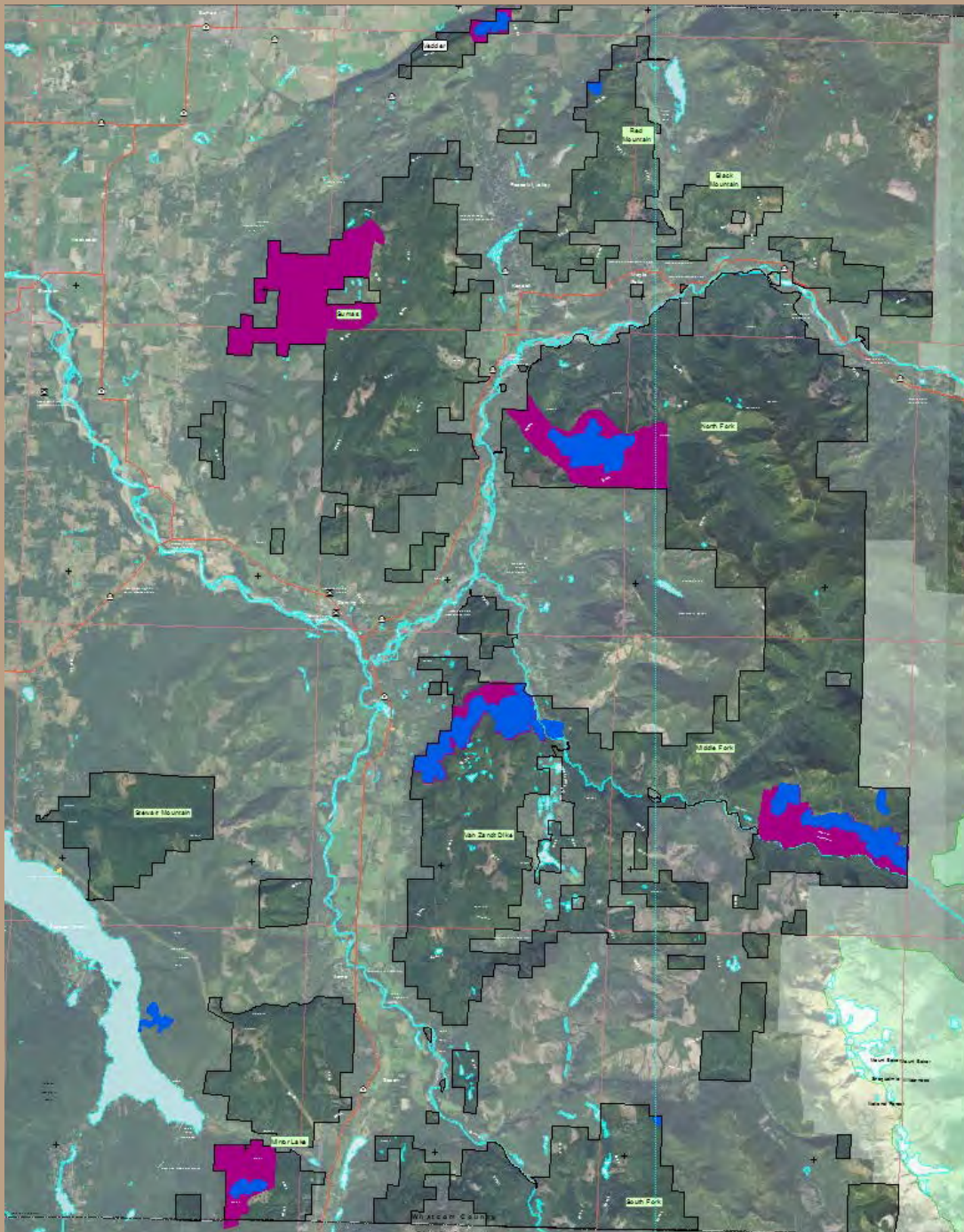
No Development

Occupied Sites & Buffers

Special Habitat Areas

- No development of any new or expanded recreation facilities, trails and recreation leases in occupied sites and their buffers, or in Special Habitat Areas
- No conversion of any existing non-motorized trails to motorized use within those areas.
- Maintenance or improvements within the footprint of existing facilities, trails and recreation leases would be allowed. These activities would take place outside of the nesting season, or follow daily timing restrictions during the nesting season.

-  Baker to Bellingham Planning Area
-  Occupied Site and Buffer
-  Special Management Area



Alternative F

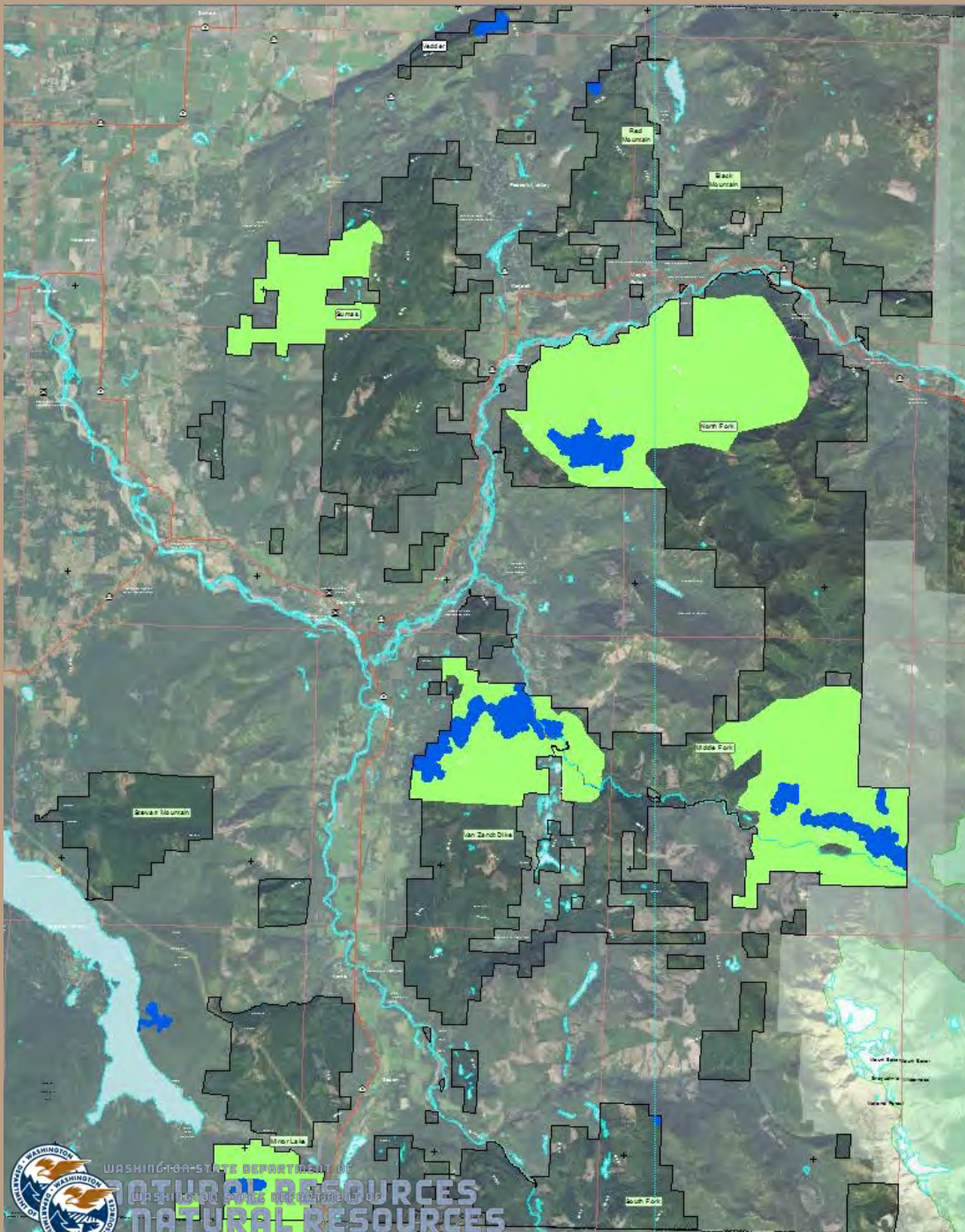
Requires Consultation

Occupied Sites and Buffers

Marbled Murrelet Management Areas

- All new or expanded recreation facilities, trails and recreation leases in occupied sites and buffers, and marbled murrelet management areas will be evaluated by DNR for impacts.
- If impacts are identified, and DNR pursues these activities, DNR will consult with USFWS.
- Design may be restricted or conditioned to avoid, minimize and mitigate murrelet impacts.
- All activities in occupied sites and their buffers will follow daily timing restrictions during the nesting season, or take place outside the nesting season when feasible.

-  Baker to Bellingham Planning Area
-  Occupied Site and Buffers
-  Marbled Murrelet Management Area



Detailed Information – DEIS page 2-20

RECREATION

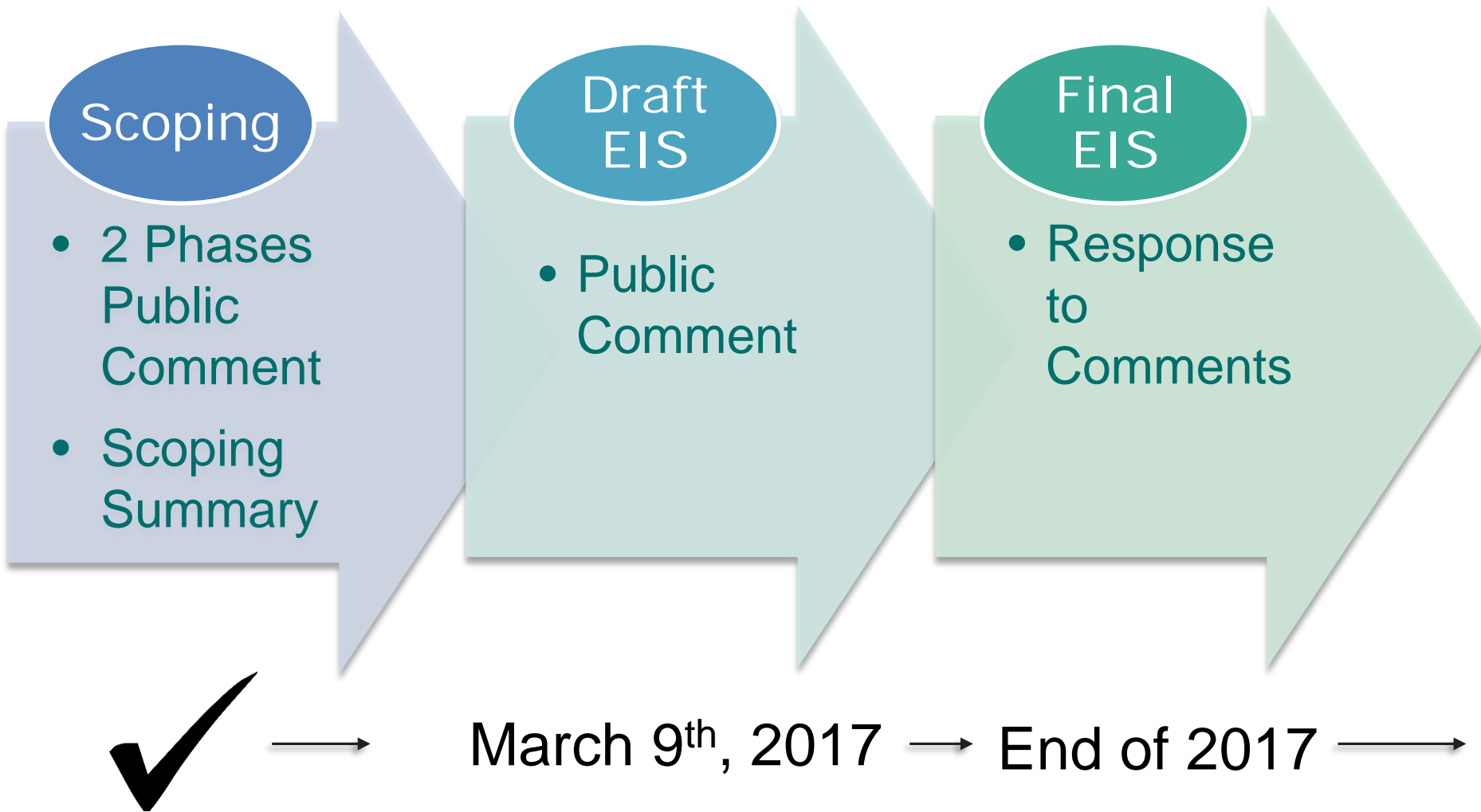
A wide variety of recreational activities occur on DNR-managed lands. Existing recreation is covered under the HCP as a *de minimis* use, and DNR regularly consults with USFWS for new activities that could potentially impact murrelet habitat. The action alternatives propose two approaches to avoiding and minimizing the impacts from *new or expanded* recreation activities for the murrelet as follows:

Table 2.2.7. Conservation Measures to Address Recreation Impacts

Activity/Use	Alternatives B, E, and F	Alternatives C and D
<p>Recreation facilities, trails and leases. Includes new or expanded facilities, such as campgrounds, day use areas, sno-park sites, and trailheads; new or expanded motorized trails; and new or expanded non-motorized trails.</p>	<p>All proposed new or expanded recreation facilities, trails, and recreational leases in special habitat areas and MMMAs occupied sites and their buffers, including the 0.5-mile occupied site buffer within emphasis areas will be evaluated by DNR for potential murrelet habitat impacts, including potential removal of nesting habitat and disturbance to nesting birds from facility or trail development or use in these areas. If impacts are identified, and DNR decides to pursue these activities, DNR will consult with USFWS. Facility or trail siting and design may be restricted or conditioned by the agencies to avoid, minimize, and mitigate murrelet impacts.</p> <p>Routine maintenance, as well as maintenance and improvements to facilities and trails located in these areas is allowed to deal with health, safety, or environmental issues. Illegal facilities and trails may be decommissioned or abandoned within murrelet habitat. All construction, decommissioning, and maintenance activities within occupied sites, buffers, special habitat areas, or MMMAs shall follow daily timing restrictions during the nesting season, or take place outside the nesting season when feasible.</p>	<p>No development of any new or expanded recreation facilities, trails, and recreational leases in special habitat areas, occupied sites, and their buffers, including the 0.5-mile occupied site buffer within emphasis areas.</p> <p>Prohibit conversion of any existing non-motorized trails to motorized use within those areas.</p> <p>DNR, in consultation with USFWS, may decommission or abandon illegal trails in these areas.</p> <p>Maintenance or improvements within the footprint of existing facilities, trails, and recreational leases within special habitat areas, emphasis areas, and occupied sites and buffers (including upgrades to deal with health and safety or environmental damage) would be allowed. These activities should take place outside the nesting season, or following daily timing restrictions during the nesting season.</p>

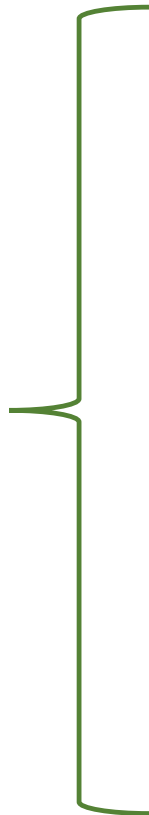


Project Timeline





12+
months



Board of Natural Resources

- Approves conservation strategy



US Fish and Wildlife Service

- Completes Biological Opinion, Findings, Record of Decision



Board of Natural Resources

- Adopts conservation strategy



How to Comment

Public Comment Periods

Public comments on this proposed DEIS are being accepted between **December 2, 2016, and 5:00 p.m. on March 9, 2017**. Comments should be submitted to the SEPA Center at sepacenter@dnr.wa.gov or SEPA Center, PO Box 47015, Olympia, WA 98504-7015. Please include the file number "12-042001" on all comments. **The subject line of comments send by email should include "SEPA File No. 12-042001."**

Board of Natural Resources (BNR)

Attend BNR meetings, first Tuesday of each month. You can give verbal comments to the BNR at the public meetings.

<http://www.dnr.wa.gov/about/boards-and-councils/board-natural-resources>



Additional Information

DNR Web Site

Marbled Murrelet Long-Term Conservation Strategy

<http://www.dnr.wa.gov/mmltcs>

Contains

DEIS Story Book – detailed interactive maps for all alternatives

Draft Environmental Impact Statement

Public Meeting Schedule

Marbled Murrelet Webinar

January 24, 2017, 2:00 - 3:00 p.m.

Join the free webinar at joinwebinar.com

Sign-in opens at 1:45 p.m.

Enter your email address and this 9-digit webinar ID: 566-953-475



