

Teanaway Community Forest Winter Recreation











CERTIFIED WOOD
STRAW & FEED RESIDUES
ON NATIONAL FORESTS



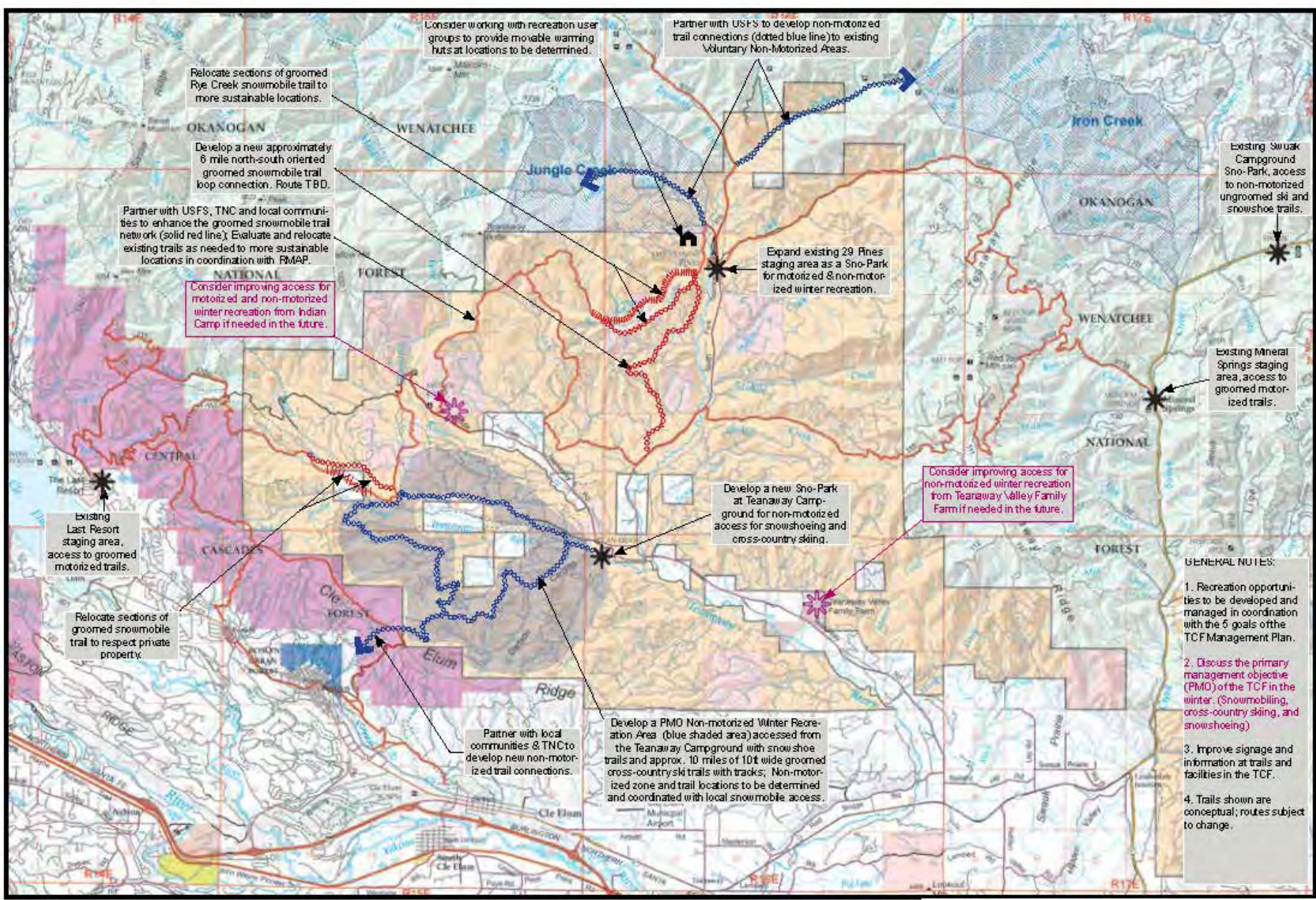
660

4Stroke

AWA

Winter Recreation Concept Mapping

- 10-15 year vision
- Community Forest
- Dual use with summer recreation
- Balance goals of Teanaway Community Forest
- Map, list and describe concepts
- **Be Creative**



Teanaway Community Forest Winter Recreation Concepts

12/13/2017 DRAFT-TRAILS AND FACILITIES SHOWN
ARE CONCEPTS FOR DISCUSSION PURPOSES ONLY

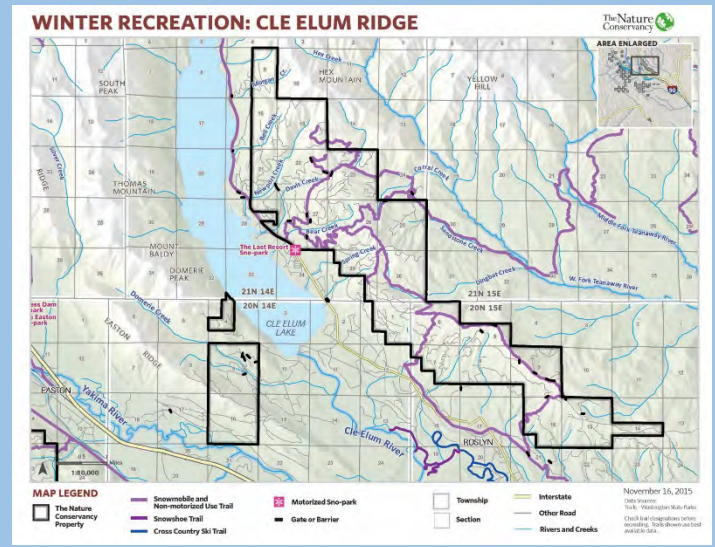
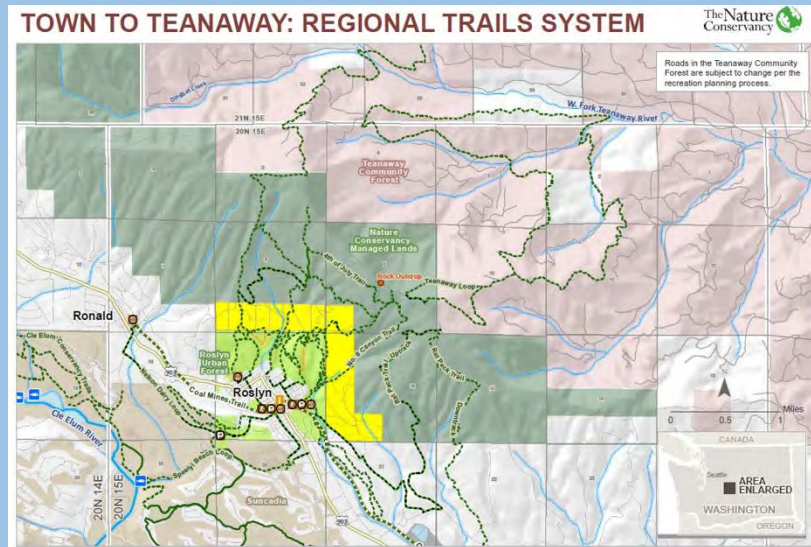
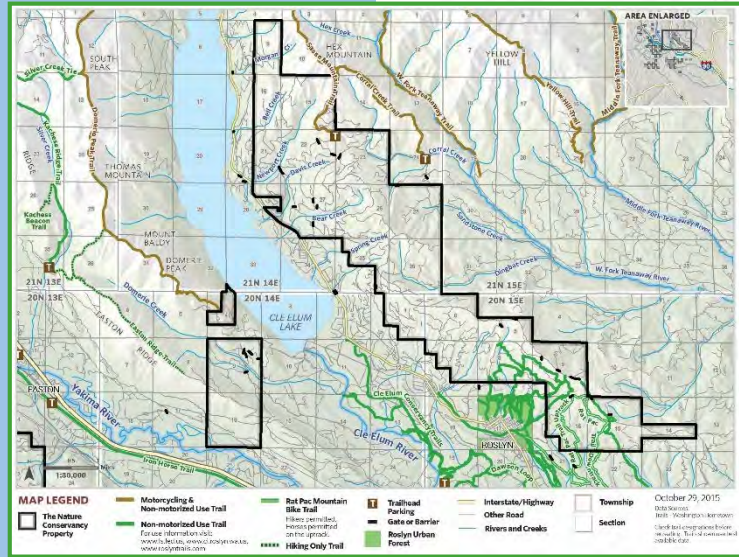
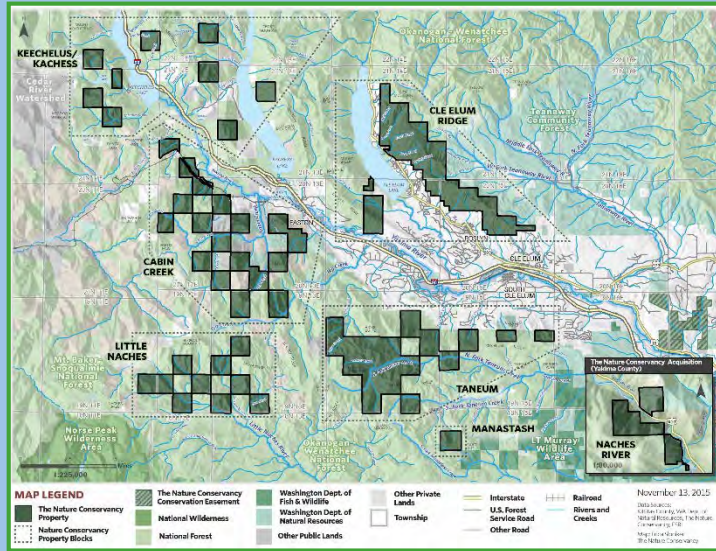
This map summarizes ideas for summer recreation that were proposed by TCF Advisory Committee members during a 11/09/17 meeting brainstorming exercise; these ideas were mapped for discussion purposes only and are subject to change.



Teanaway Community Forest Summer Recreation



TNC Central Cascades



Equestrian



Trout

Dale Bambrick – Trout in the Context of a Recreation Plan

I regret that my day job again interferes with my ability to attend this month's. In lieu of boring you all with a face-to-face presentation at a future meeting, I thought I'd go ahead and bore you all now with this missive.

My presentation is labeled "trout" on the agenda, but in the context of a recreational plan, it should really be about the acts of pondering, chasing, and being perplexed by trout.

Some of you know my day job is with the National Marine Fisheries Service, an organization that is very interested in ensuring the ecological health of the Teanaway as it is an important place for salmon and steelhead. Some of you may not know either that I participate in the TCFAC on my own time or my reasons for doing so.

The latter is about the extent to which my personal feelings about the Teanaway, including pondering and chasing its trout, stray from my professional, clinical concern for its ecological condition. This despite the fact that all of the things that concern me as a professional (at least those related to watersheds) concern me personally. But as an Endangered Species Act clinician, aesthetics don't matter unless the fish care. Smells, sounds, solitude? So what?

The TCFAC represents many interests. Organized interests for the most part. Some of us aren't joiners and thus don't belong to a club with which to club folks into meeting our needs. I've heard several folks on the group mention their expectation of getting "A piece. Our piece." Some of us just want peace - and some quiet.

I first fished the Teanaway as a kid in the 60's and fished it frequently over the years although I spent more time on the Yakima in my drift boat as the Yakima River's larger trout were a lure. Then Brad Pitt happened. When *A River Runs Through It* came out, fad-chasers from across the land became wannabe fly fishermen, and hundreds of carries bought guide licenses to show them the way. A thick cloud of pretense settled in the valley and some of us scrambled uphill to the small creeks for cleaner air.

In a typical summer week in the mid 1980s, I'd fish the Yakima 4 times. In 2015 I fished it once, and last year, for the first time since Paper Lace unleashed that awful *Billy Don't Be a Hero*, I did not fish it. I instead spent parts of 6 or 7 days fishing the Teanaway and had a blissful time catching some small trout on a small fly rod. Well, I had a blissful time until the USFS made the Middle Fork Trail passable to dirt bikes. I've shared photos of the damage done to the creek and a wetland with some of you and can resend if there is interest.

On my office wall is one of my oldest daughter's first grade art projects. She's 25 now, but at 6, she got the essence of what the act of pondering trout is about for some of us. The picture depicts her, fly rod in hand (no waders by the way, just a stunning pink gown), watching a fly float on blue water between evergreens. Below reads "I like fish. It was fun. The river is peaceful." I should have known that she grew to teach English and poetry to college students.

way?

tape that are
re poets. The
nit their
ck. Let's tell



Sponsor and lead field trips
for the
Kittitas Environmental
Education Network

Hunting



Birding





Teaway Community Forest Evergreen MTBA Survey Results

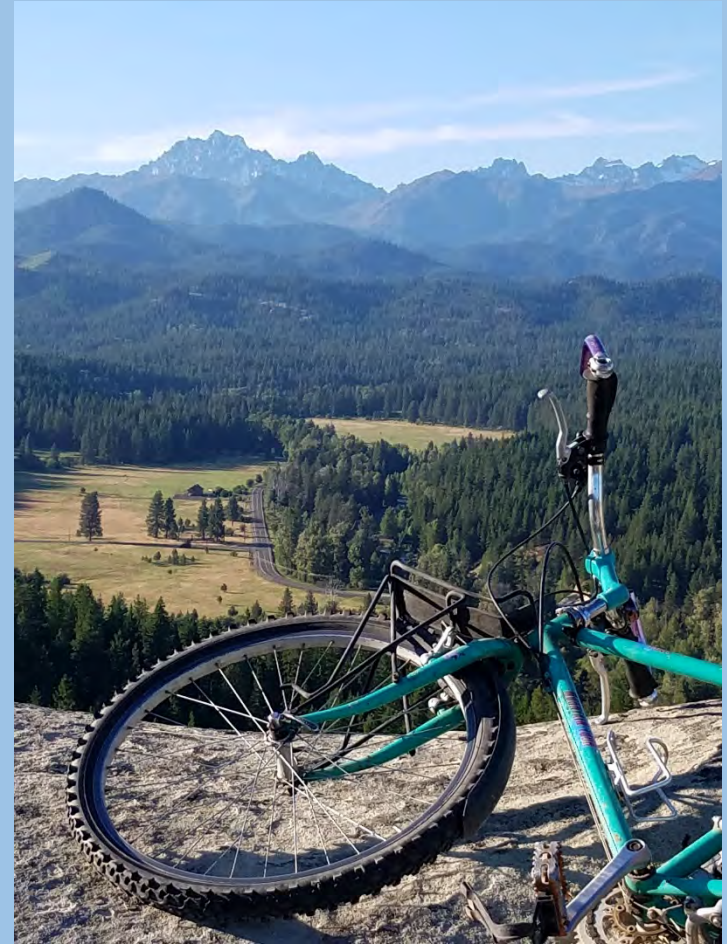
Total Responses: 244

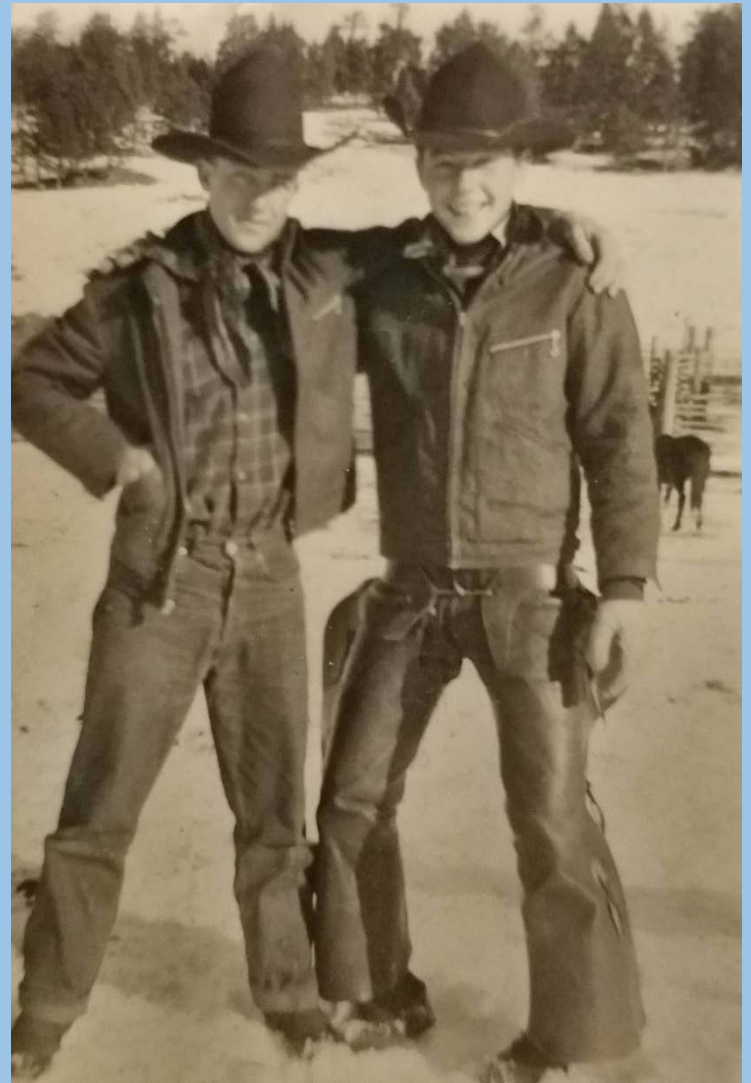
- Date Created: Friday, May 12, 2017
- Date Closed: Tuesday, June 6, 2017



Recreation Planning Concerns:

- 59% FOREST FIRE
- 31% ORV,
- 27% Disbursed Camping
- 13% TRESSPASS
- 9% Large Groups
- 4% Open Range, Wolves, Crime, H2O Rights







BACKCOUNTRY WILDERNESS AREA TRAILHEAD

Welcome to the Backcountry Wilderness Area and the Douglas County Regional East/West Trail

This trail leads to your starting point, on foot, bike, or horse - for destinations near and far.

This section of the Douglas County East-West Trail leads you to Crater Ridge Park, in the future this trail will connect with the East-West Trailhead at Crater Ridge and to the Bull's Head Trail Park.

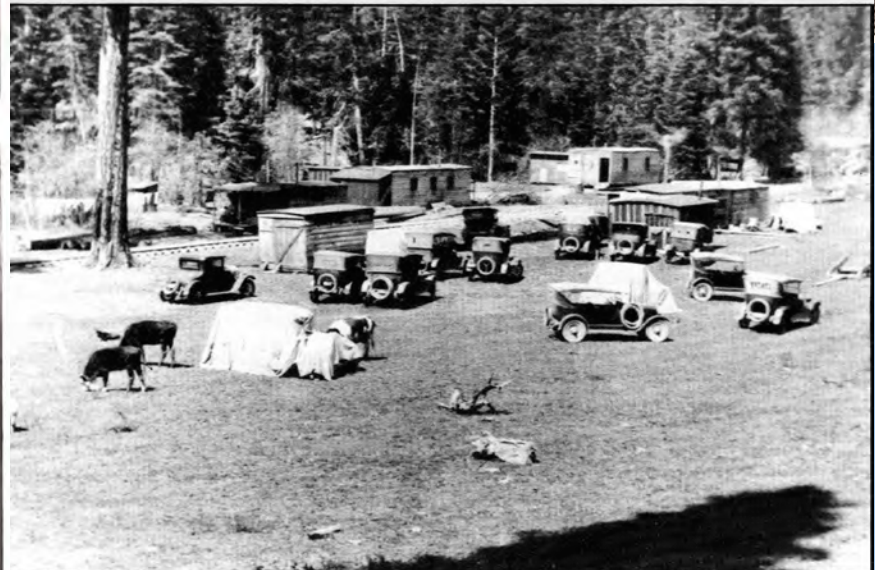
Once on the trail you will find the Wildcat Mountain Trail System where you can explore 31 miles of the Backcountry Wilderness Area. The Backcountry is an unspoiled, wild, and beautiful place for horses, hikers, and animals. Native grasslands and shrubs make up the majority of the ecosystem which contains oak, aspen, birch, and many other species of wildlife.

The Wildcat Mountain Trail System has unique regulations in order to protect the abundant wild land resources reserved to the property. Dogs will not be permitted on the trails and they will be seasonal closures. For more information please go to www.backcountry.org

TRAILMAPS BY COMPUTER TERRAIN MAPPING

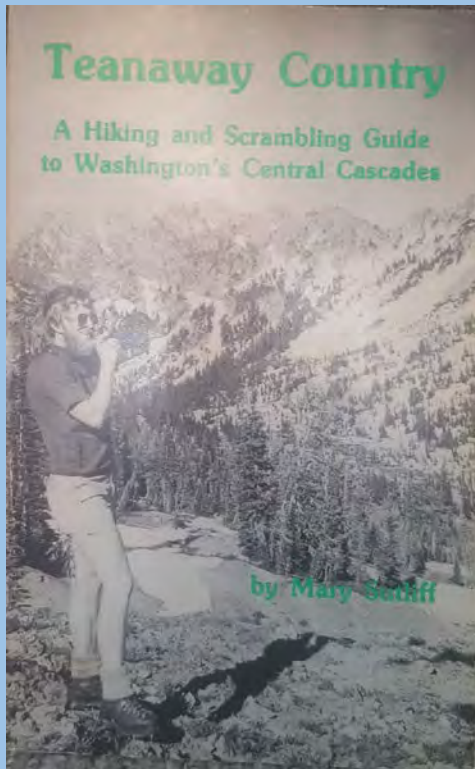


HIGHLANDS RANCH COMMUNITY ASSOCIATION/ COLORADO LOGO, COLOR PALETTE, INTERPRETIVE AND TRAIL SIGNAGE PROGRAM



ll Taylor's camp on Lick Creek. 1927. (Photograph courtesy of the Ellensburg Public Library.)

History of Hiking in Teanaway



- Long history of people hiking in the Teanaway Basin
- *Teanaway Country* was published in 1980 by *Signpost Books*
- Trails highlighted in the book include:
 - Yellow Hill
 - Middle Fork Teanaway
 - West Fork Teanaway
- “Those living in western Washington have easy access to the Cascades, but often mountains on the western slopes are damp and wet and people then yearn for sun and dryness. I found myself frequently traveling over Snoqualmie Pass to the mountains east of the Cascade crest.”
- “While the hiker is seldom more than a day’s hike from the road, the sense of being in wilderness is strong.”

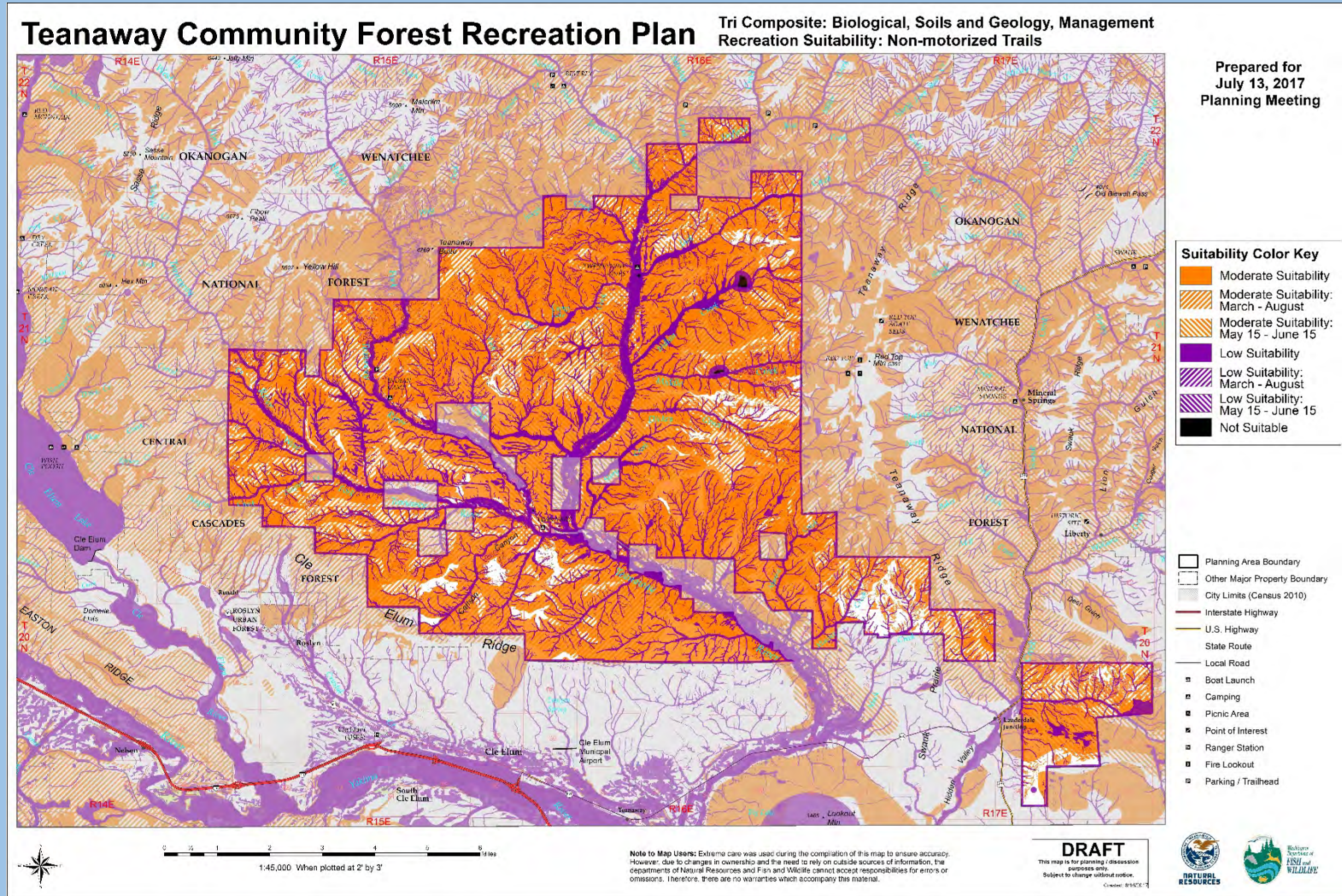
TEANAWAY COMMUNITY FOREST RECREATION PLAN

Tri-Composite Criteria

Biological	Soils and Geology	Management
Wetlands & Wetlands Buffers 120'	Soils Risk for Recreation (Erosion)	Communication and Management Sites
Riparian: streams, open water, buffers Fish 120', Non-fish 50', Unknown 25'	Areas with High Potential for Landslides/Unstable Slopes	Rock Sources (existing and future)
Salmonids and Fish Habitat Informational Only **	Slope Percentage	Utility Easements
Deer & Elk Winter Range	100 - Year Flood Plains	Land Adjacent to Other Properties
Deer & Elk Calving/fawning range May 15 - June 15 Buffer 300 meters	Poorly Drained Soils	Wells and Water Sources
Sensitive, Threatened & Endangered Species (plants & animals)**	Areas with High Potential for Avalanche (Cabin Creek)	Riparian Restoration Areas
High Quality or Rare Plant Communities	Areas that have Moved in Previous Landslides	Cultural and Archeological Resources
Northern Spotted Owl / Northern Goshawk (March - August)		
Large Carnivores - Gray Wolf ** March 15 - June 15		** Items Not Shown on Map

TEANAWAY COMMUNITY FOREST RECREATION PLAN

Non motorized Trails



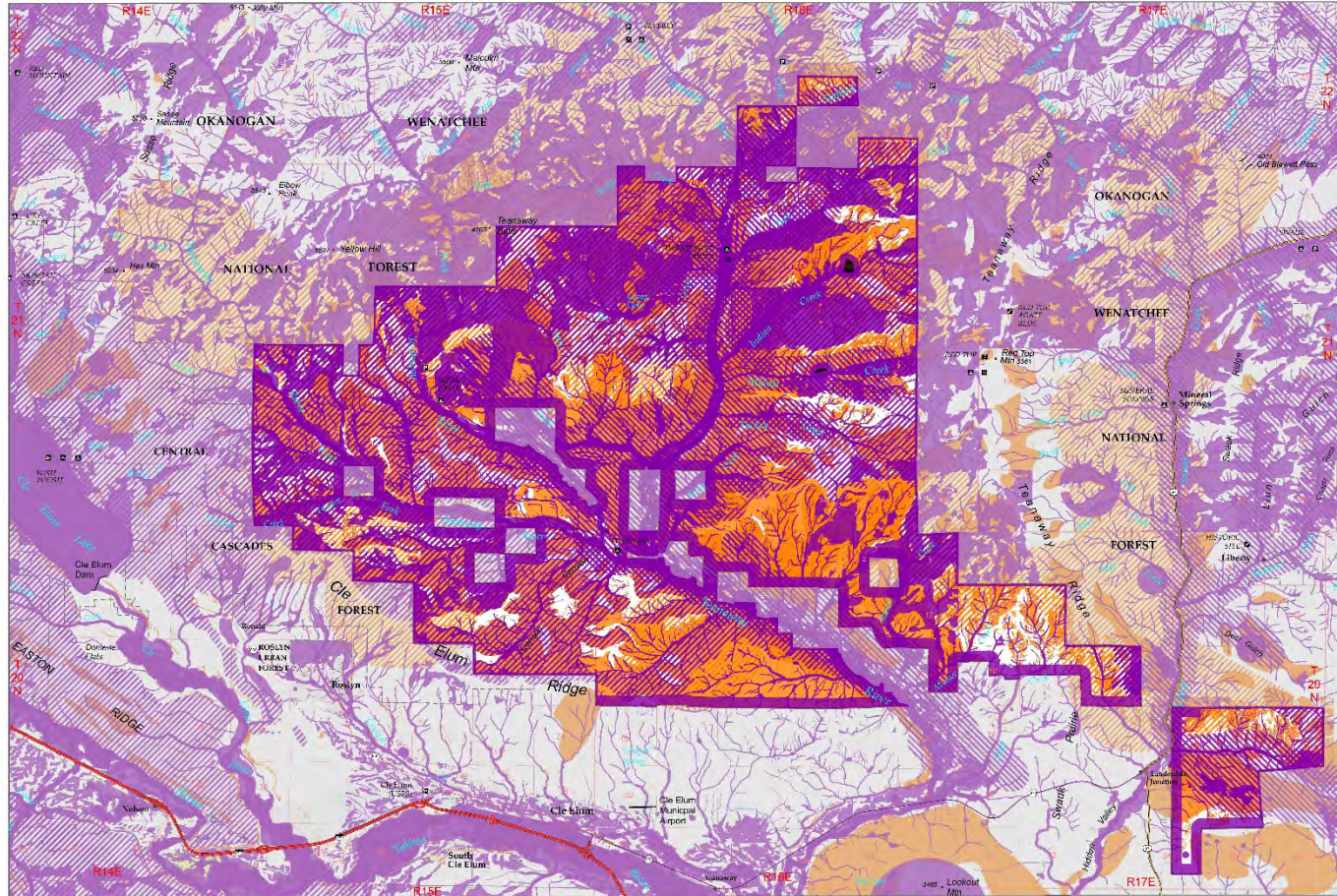
TEANAWAY COMMUNITY FOREST RECREATION PLAN

Motorized Trails

Teanaway Community Forest Recreation Plan

Tri Composite: Biological, Soils and Geology, Management
Recreation Suitability: Motorized Trails

Prepared for
July 13, 2017
Planning Meeting



Suitability Color Key

	Moderate Suitability
	Moderate Suitability: March - August
	Moderate Suitability: May 15 - June 15
	Low Suitability
	Low Suitability: March - August
	Low Suitability: May 15 - June 15
	Not Suitable

- Planning Area Boundary
- Other Major Property Boundary
- City Limits (Census 2010)
- Interstate Highway
- U.S. Highway
- State Route
- Local Road
- Boat Launch
- Camping
- Picnic Area
- Point of Interest
- Ranger Station
- Fire Lookout
- Parking / Trailhead



0 1 2 3 4 5 6 Miles
1:45,000 When plotted at 2' by 3'

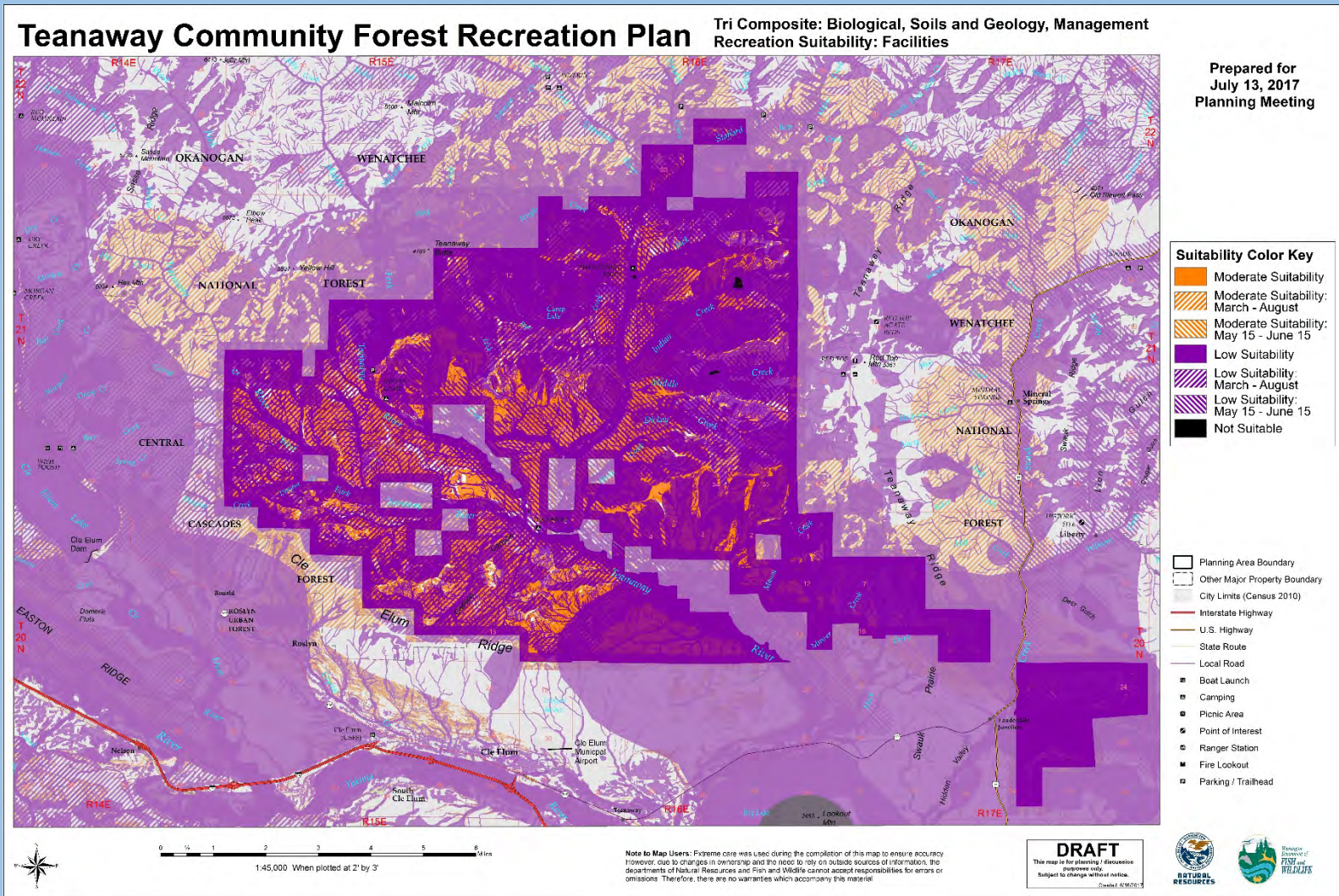
Note to Map Users: Extreme care was used during the completion of this map to ensure accuracy. However, due to changes in ownership and the need to rely on outside sources of information, the departments of Natural Resources and Fish and Wildlife cannot accept responsibility for errors or omissions. Therefore, there are no warranties which accompany this material.

DRAFT
This map is for planning discussion purposes only. Subject to change without notice.
© 2017 WSR



TEANAWAY COMMUNITY FOREST RECREATION PLAN

Facilities



Teanaway Community Forest Recreation Survey

July 24 – August 24, 2017

2682 Total Responses

Powered by  SurveyMonkey



Field Trips

- Winter recreation
- Unique rock formations
- What does the purple stuff look like?
- USFS multi-use trails
- Camping areas and river access
- User interaction and enforcement



Motorcycle Use Discussion

#1 ALLOW MOTORCYCLES IN THE TCF?

YES ●●●●●

NO ●●●●●

CONDITIONAL ●●●●●

#2 ALLOW MOTORCYCLES ON EXISTING U.S.F.S. MULTI-USE TRAILS?

a. West Fork

YES ●●●●●●●●●●

NO ●●●●●

CONDITIONAL ●●●●●●●●●●

b. Yellow Hill

YES ●●●●●●●●●●●●●●●●

NO ●●●●●

CONDITIONAL ●●●●●

c. Middle Fork ~~NO FISH MOTORY~~

YES ●●●●●●●●●●

NO ●●●●●●●●●●

CONDITIONAL ●●●●●

#3 ADD ADDITIONAL MOTORCYCLE TRAIL CONNECTIONS AS AN OPTION? (this could be used to mitigate for possible changes somewhere else)

YES ●●●●●

NO ●●●●●

CONDITIONAL ●●●●●●●●●●

#4 DEVELOP A P.M.O. CROSS-COUNTY MOTORCYCLE AREA SEPARATED FROM OTHER NON-MOTORIZED USERS?

YES ●●●●●

NO ●●●●●●●●●●

CONDITIONAL ●●●●●

#5 ALLOW MOTORCYCLE USE ON P.M.O. (P.M.O. CROSS-COUNTY MOTORCYCLE AREA) NON-MOTORIZED TRAILS AS A SHARED USE?

YES ●●●●●

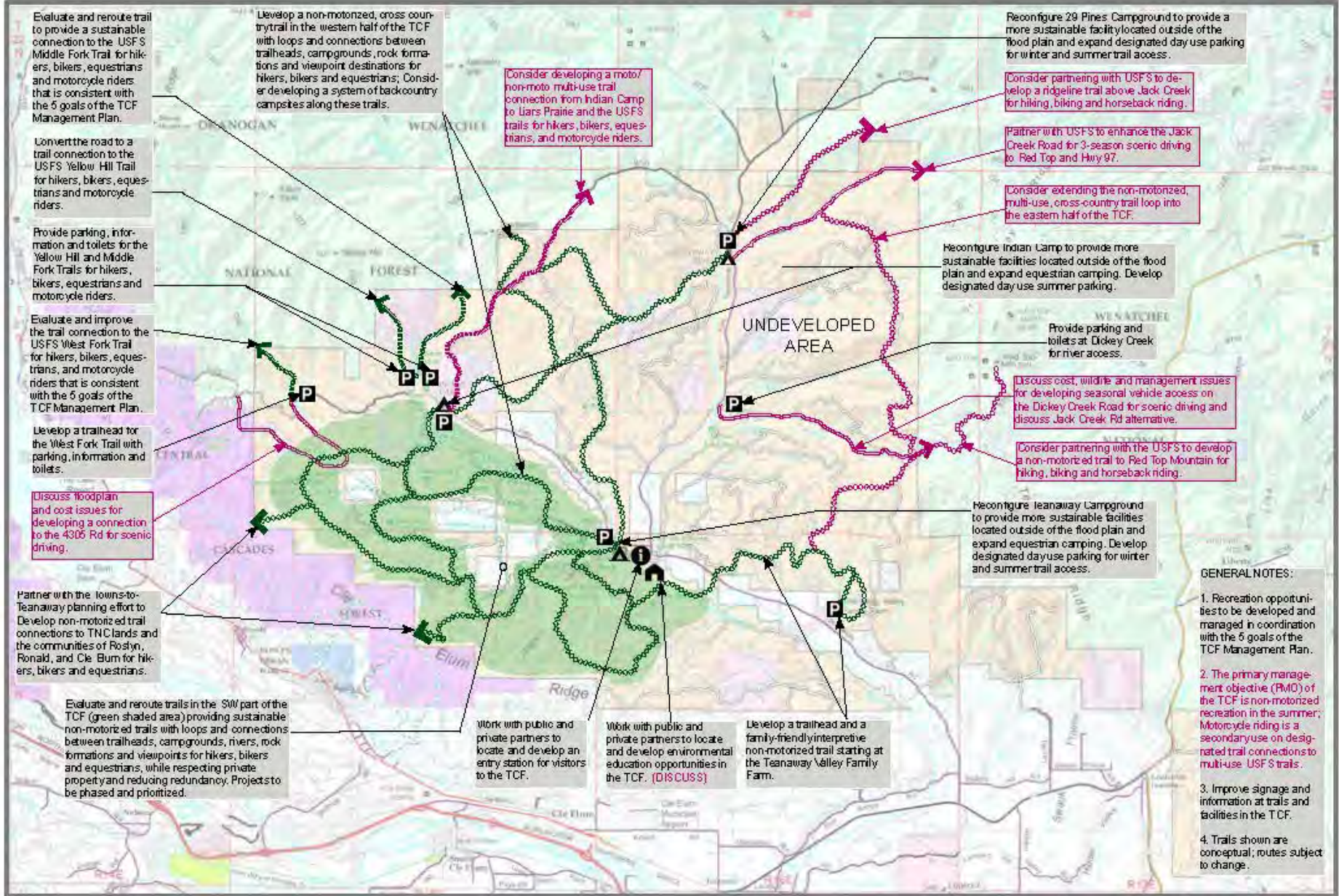
NO ●●●●●●●●●●●●●●●●

CONDITIONAL ●●●●●

Conditional use
- Connect to use
- Connect to use
- Connect to use

Summer Recreation Concept Mapping

- 10-15 year vision
- Community Forest
- Dual use with winter recreation
- Balance goals of Teanaway Community Forest
- Map, list and describe concepts
- **Be Creative**



Teanaway Community Forest Summer Recreation Concepts

12/13/2017 DRAFT-TRAILS AND FACILITIES SHOWN
ARE CONCEPTS FOR DISCUSSION PURPOSES ONLY

- KEY**
- Consensus ideas
 - Additional ideas for discussion

This map summarizes ideas for summer recreation that were proposed by TCF Advisory Committee members during a 1/10/17 meeting brainstorming exercise. These ideas were mapped for discussion purposes only and are subject to change.



- GENERAL NOTES:**
1. Recreation opportunities to be developed and managed in coordination with the 5 goals of the TCF Management Plan.
 2. The primary management objective (PMO) of the TCF is non-motorized recreation in the summer; Motorcycle riding is a secondary use on designated trail connections to multi-use USFS trails.
 3. Improve signage and information at trails and facilities in the TCF.
 4. Trails shown are conceptual; routes subject to change.