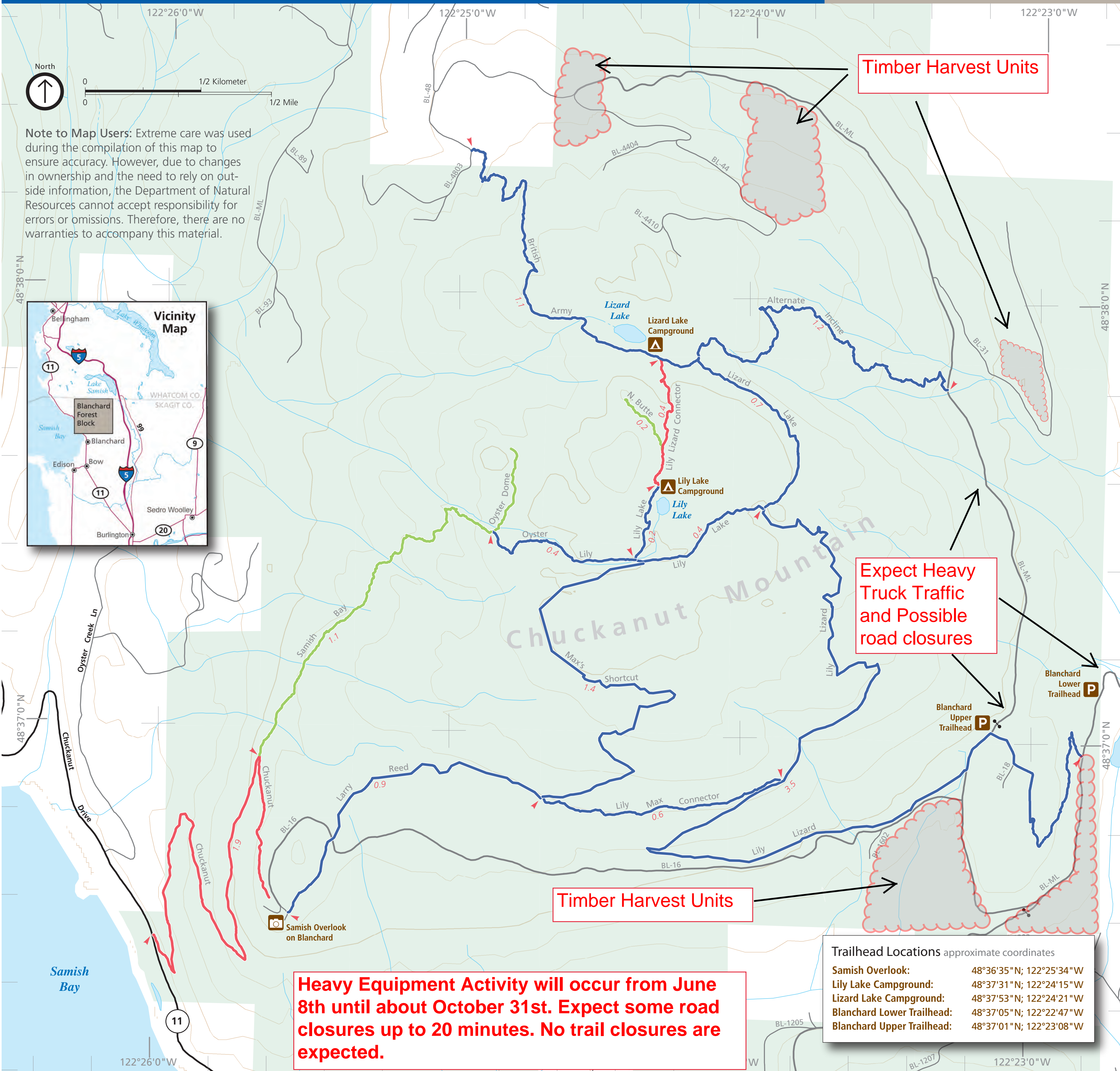


# Recreation and Trails Map

## Blanchard Forest Block



**Note to Map Users:** Extreme care was used during the compilation of this map to ensure accuracy. However, due to changes in ownership and the need to rely on outside information, the Department of Natural Resources cannot accept responsibility for errors or omissions. Therefore, there are no warranties to accompany this material.



**Timber Harvest Units**

**Expect Heavy Truck Traffic and Possible road closures**

**Timber Harvest Units**

**Heavy Equipment Activity will occur from June 8th until about October 31st. Expect some road closures up to 20 minutes. No trail closures are expected.**

Trailhead Locations	approximate coordinates
Samish Overlook:	48°36'35" N; 122°25'34" W
Lily Lake Campground:	48°37'31" N; 122°24'15" W
Lizard Lake Campground:	48°37'53" N; 122°24'21" W
Blanchard Lower Trailhead:	48°37'05" N; 122°22'47" W
Blanchard Upper Trailhead:	48°37'01" N; 122°23'08" W

**Please stay on designated trails. If a trail is not posted with DNR signs, and does not appear on DNR maps, it is not approved for public use.**

Current trail conditions and/or closures are posted at trailheads.

- Campground
- Viewpoint
- Trailhead Parking
- DNR Trust Lands
- Non-Motorized Trail: Hiker only
- Non-Motorized Trail: Hiker, Bike, Horse
- Non-Motorized Trail: Hiker, Bike
- State or County Road
- Primary Forest Road
- Secondary Forest Road
- Gate
- Trail Mileage between ticks



Scan and learn more



WASHINGTON STATE  
**Natural Resources**

[www.dnr.wa.gov/recreation](http://www.dnr.wa.gov/recreation)