



WASHINGTON STATE DEPARTMENT OF
Natural Resources

Peter Goldmark - Commissioner of Public Lands

Baker to Bellingham Recreation Plan

Land Suitability Overview



Planning Goals

- ❖ **Compatible with management obligations**
- ❖ **Resource protection**
- ❖ **Safety**
- ❖ **Quality experience for recreation visitor**

RECREATION LAND SUITABILITY



Recreation Land Suitability

Purpose: To create tools (maps) that guide recreation planning

Process: Identify and map areas with long- term limiting factors that affect recreation planning

Biological

Geologic & Soils

Management

Biological Criteria

Wetlands & Wetland Buffers

Fish Habitat

Riparian Areas

Elk Habitat

Mule Deer

Cliffs & Bluffs

High Quality & Rare Plant Communities

Peregrine Falcons

Sensitive, Threatened & Endangered Species

**These project-scale considerations are not intended to replace site specific project analysis. This list is based on information available to date.*

Geological/Soils

Soils with High Erosion Potential

Poorly Drained Soils

Slope Percentage

100-Year Flood Plains

Areas That Have Moved in Previous Landslides

Areas With High Potential for Landslides

Special Geologic Features

Management Criteria

Communication Sites/Weather Stations

Rock Sources

Utility Easements

Land Adjacent to Other Properties

Water Sources

Cultural / Archaeological Resources

**These project-scale considerations are not intended to replace site specific project analysis. This list is based on information available to date.*

Terms for Land Suitability

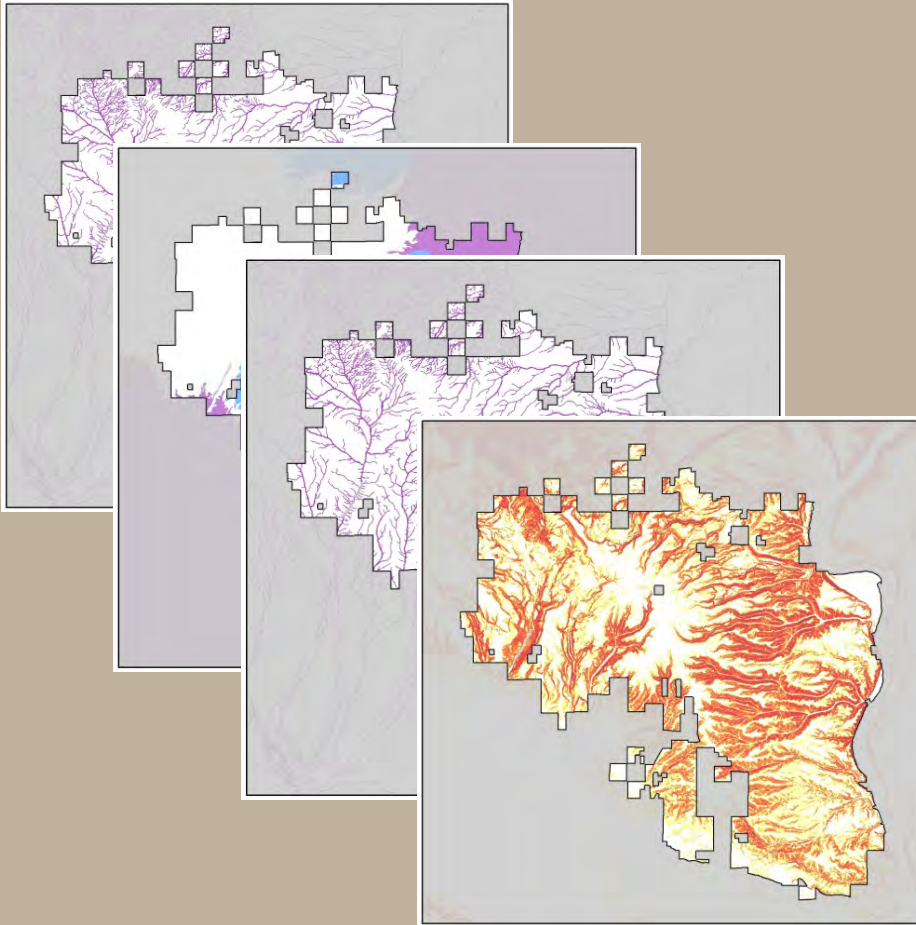
Low Suitability= Areas with long-term limiting factors. These include areas with potential for landslides, Habitat Conservation Plan protected habitats and cultural resources

Moderate Suitability= Areas where less mitigation and potential for impact exists compared to low suitability

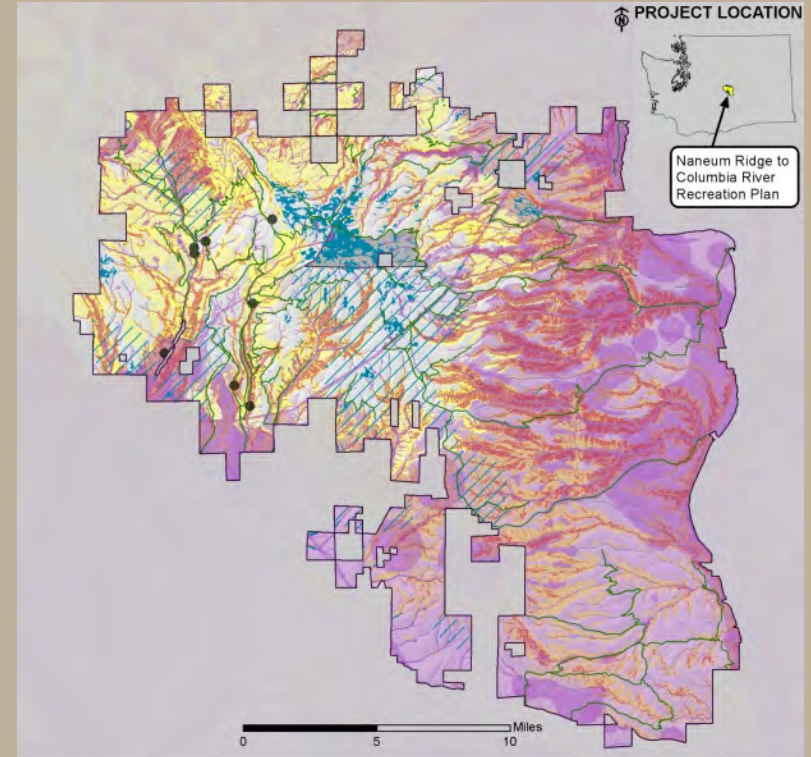
Land Suitability Ratings

Naneum Ridge to Columbia River Recreation Plan		Suitability Matrix	
BIOLOGICAL CRITERIA	Recreation Trails	Recreation Facilities	
Wetlands	Low Suitability	Low Suitability	
Wetland Buffers	Low Suitability for Motorized and Non Motorized Trails; Moderate Suitability for Hiker Trails	Low Suitability	
Fish Habitat	Low Suitability	Low Suitability	
Riparian Areas	Low Suitability for Motorized and Non Motorized Trails; Moderate Suitability for Hiker Trails	Low Suitability	
Elk Habitat *	Low Suitability – potential wet meadow areas & winter range (shown in hatch)	Low Suitability – potential wet meadow areas & winter range (shown in hatch)	
Big Horn Sheep	Low Suitability for Motorized and Non Motorized Trails; Moderate Suitability for Hiker Trails	Low Suitability	
Mule Deer (winter range)	Low Suitability (shown in hatch)	Low Suitability (shown in hatch)	
Cliffs & Bluffs	Low Suitability	Low Suitability	
High Quality or Rare Plant Communities	Low Suitability-would require additional assessment	Low Suitability-would require additional assessment	
Shrub Steppe Habitat	Low Suitability for Motorized and Non Motorized Trails; Moderate Suitability for Hiker Trails	Low Suitability	
Peregrine Falcons & Goshawks	Low Suitability – Peregrine; Moderate Suitability - Goshawk	Low Suitability – Peregrine; Moderate Suitability - Goshawk	
Sensitive, Threatened, & Endangered species (plants & animals)**	Low Suitability	Low Suitability	

Land Suitability - Mapping

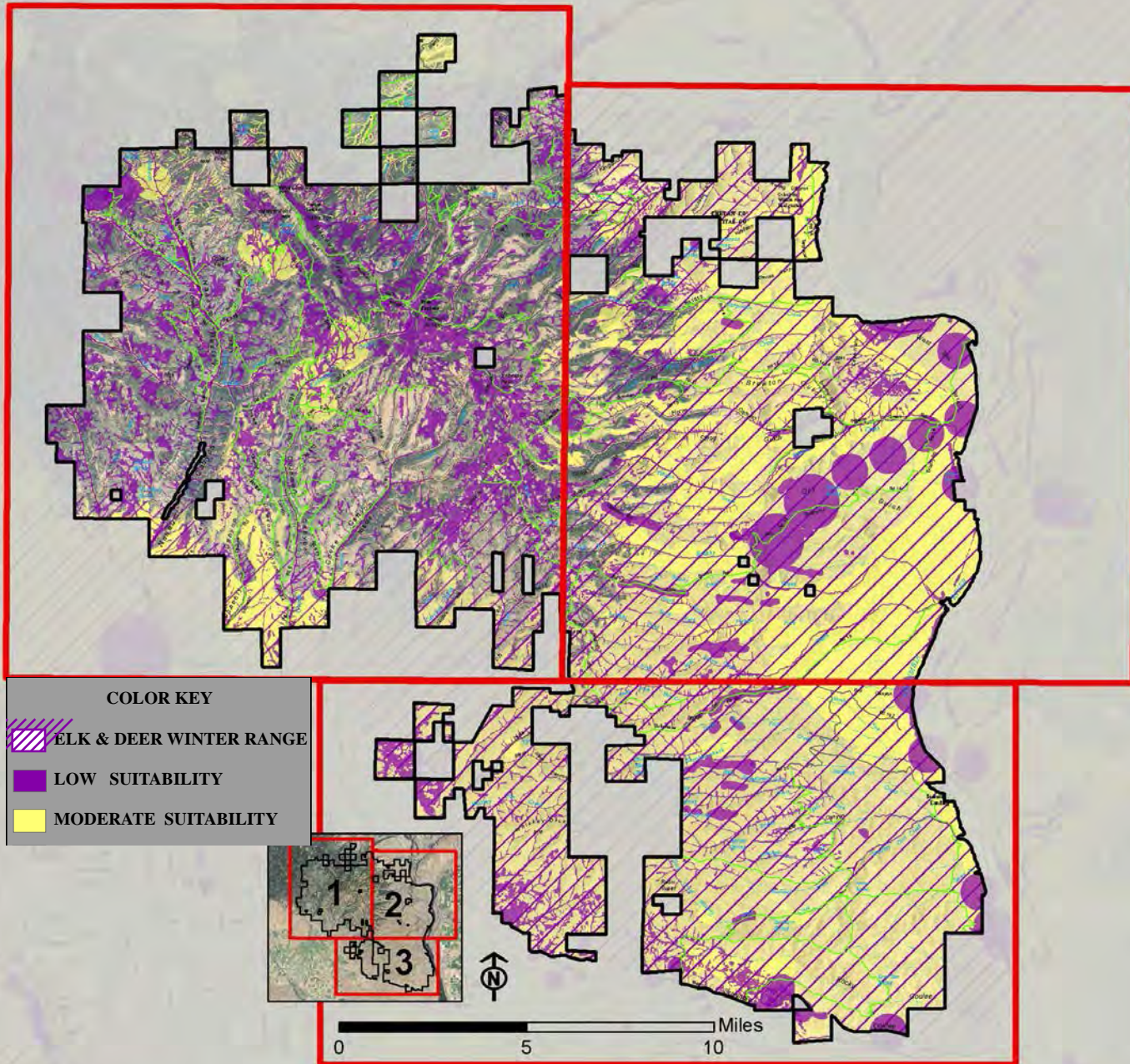


Data Layers Added Together



Composite Maps

Hiker Only Trails: Biological Composite



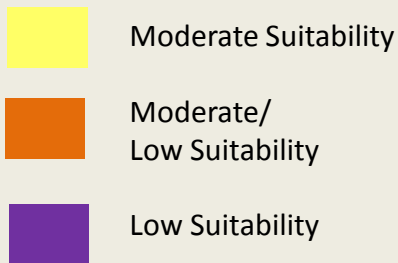
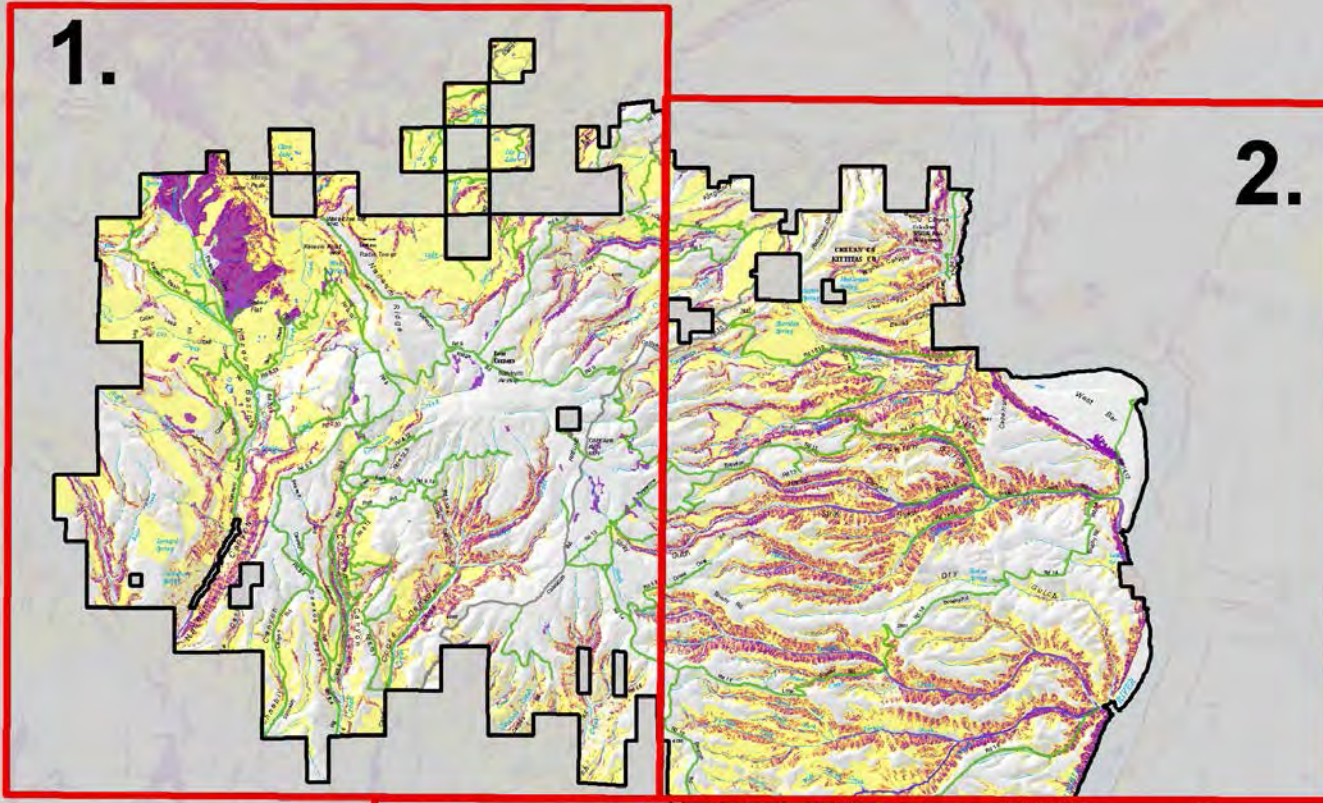
Maps are tools
they are not
decisions

Low Suitability
does not mean no
access or no
recreation

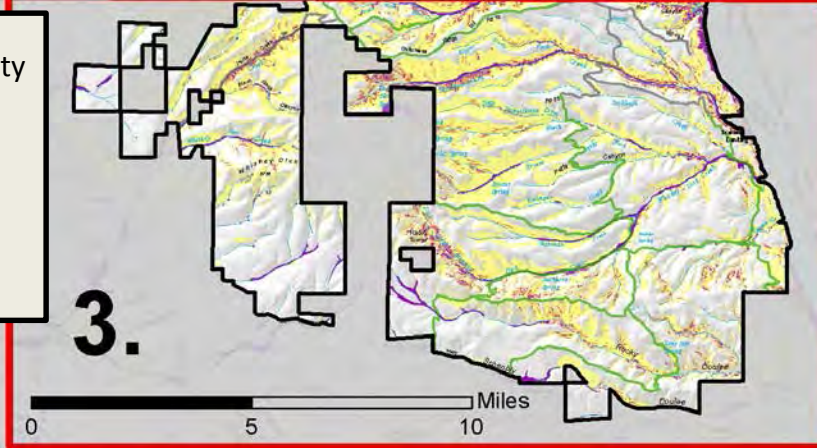
Recreation Trails: Geology/Soils Composite

1.

2.



3.



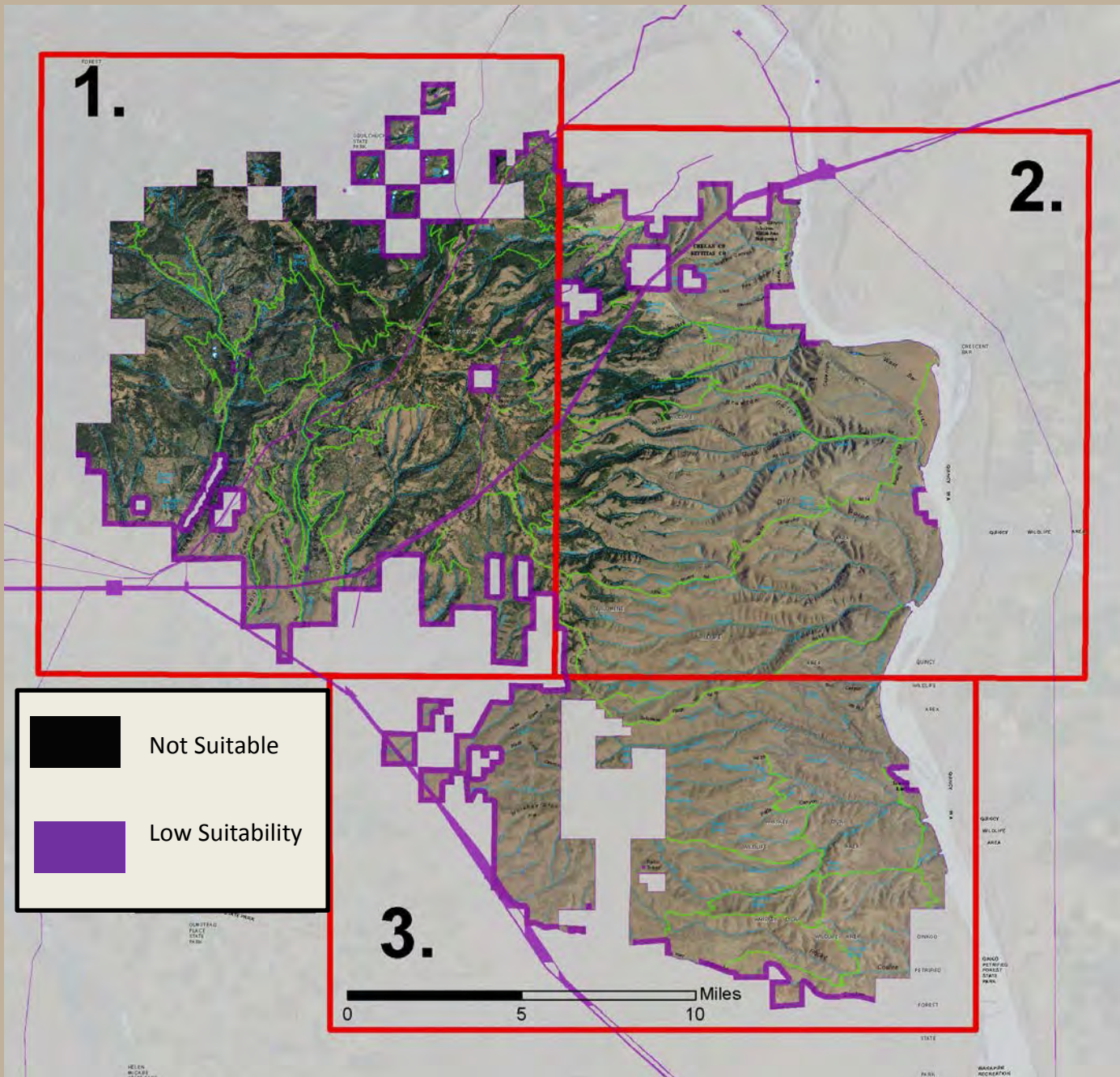
Maps are tools
they are not
decisions

Low Suitability
does not mean no
access or no
recreation

Recreation Trails: Management Composite

Maps are tools
they are not
decisions

Low Suitability
does not mean no
access or no
recreation



Tri-Composite Maps

Hiking Trails

Non-Motorized Trails

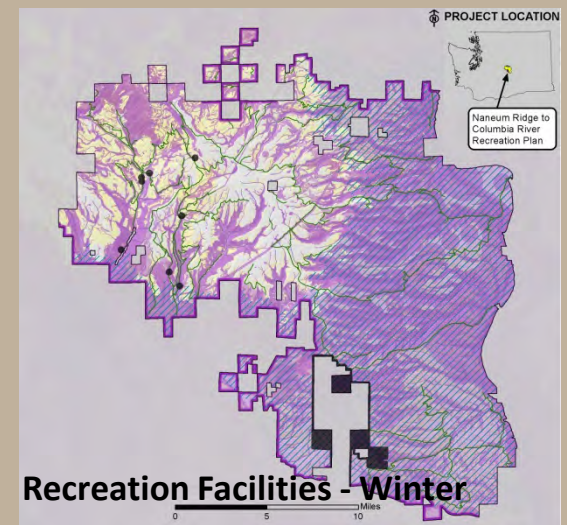
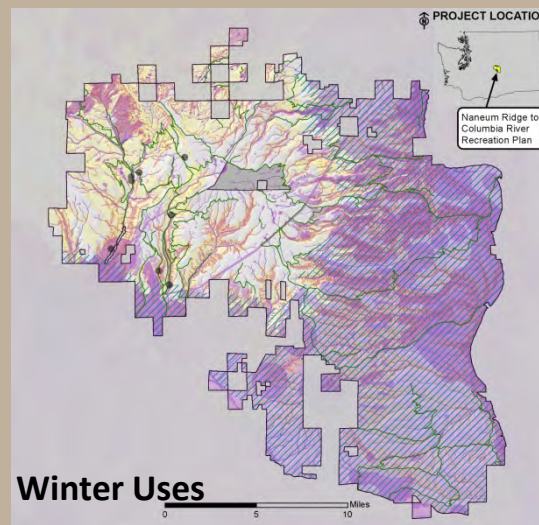
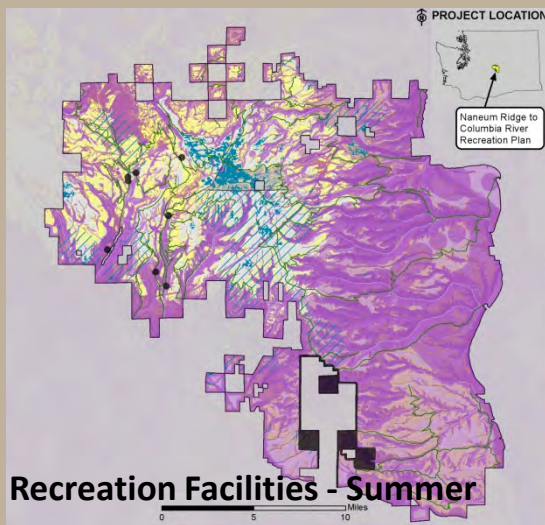
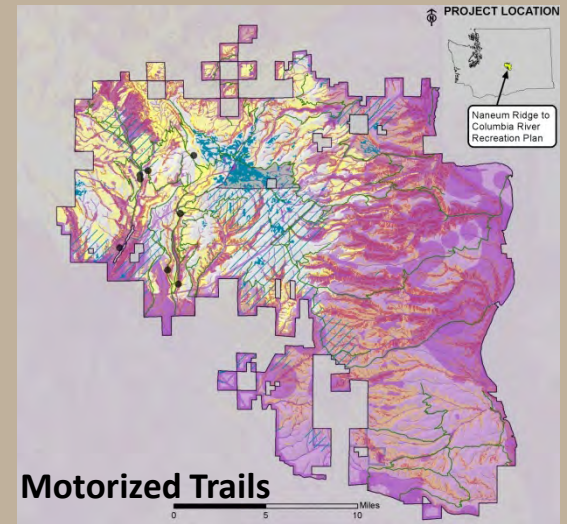
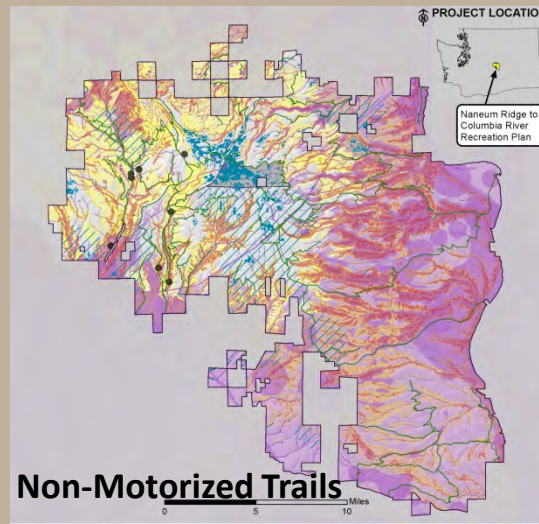
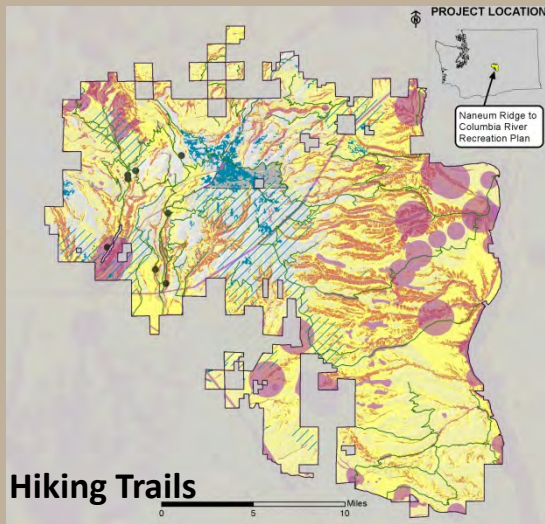
Motorized Trails

Recreation Facilities – Summer

Winter Uses

Recreation Facilities - Winter

Tri-Composite Maps



QUESTIONS



WASHINGTON STATE DEPARTMENT OF
Natural Resources

Peter Goldmark - Commissioner of Public Lands