

Baker to Bellingham Recreation Plan



April 12, 2016 Recreation Planning Committee Meeting



WASHINGTON STATE DEPARTMENT OF
Natural Resources

www.dnr.wa.gov

Questions & Discussion From March Meeting

- ▶ Maps Showing Private Lands
- ▶ Mapping of Middle Fork of the Nooksack River
- ▶ User Group Generated Recreation Maps
- ▶ Sumas Mountain ORV Plan & SEPA
- ▶ Crowd Source Mapping
- ▶ Other Questions from March



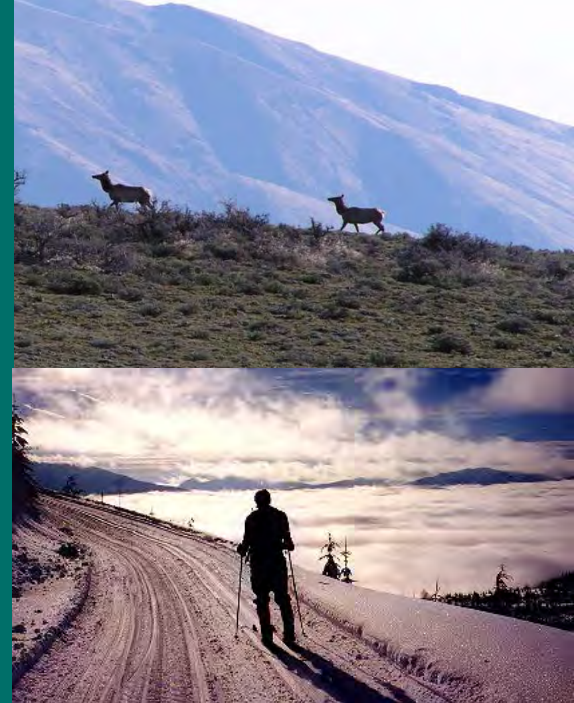


WASHINGTON STATE DEPARTMENT OF
Natural Resources

www.dnr.wa.gov

Recreation Plan: Major Components

- ▶ Inventory & Analysis
- ▶ Concept Development
- ▶ Preferred Alternative
- ▶ Objectives & Strategies
- ▶ Implementation



Land Suitability Assessment

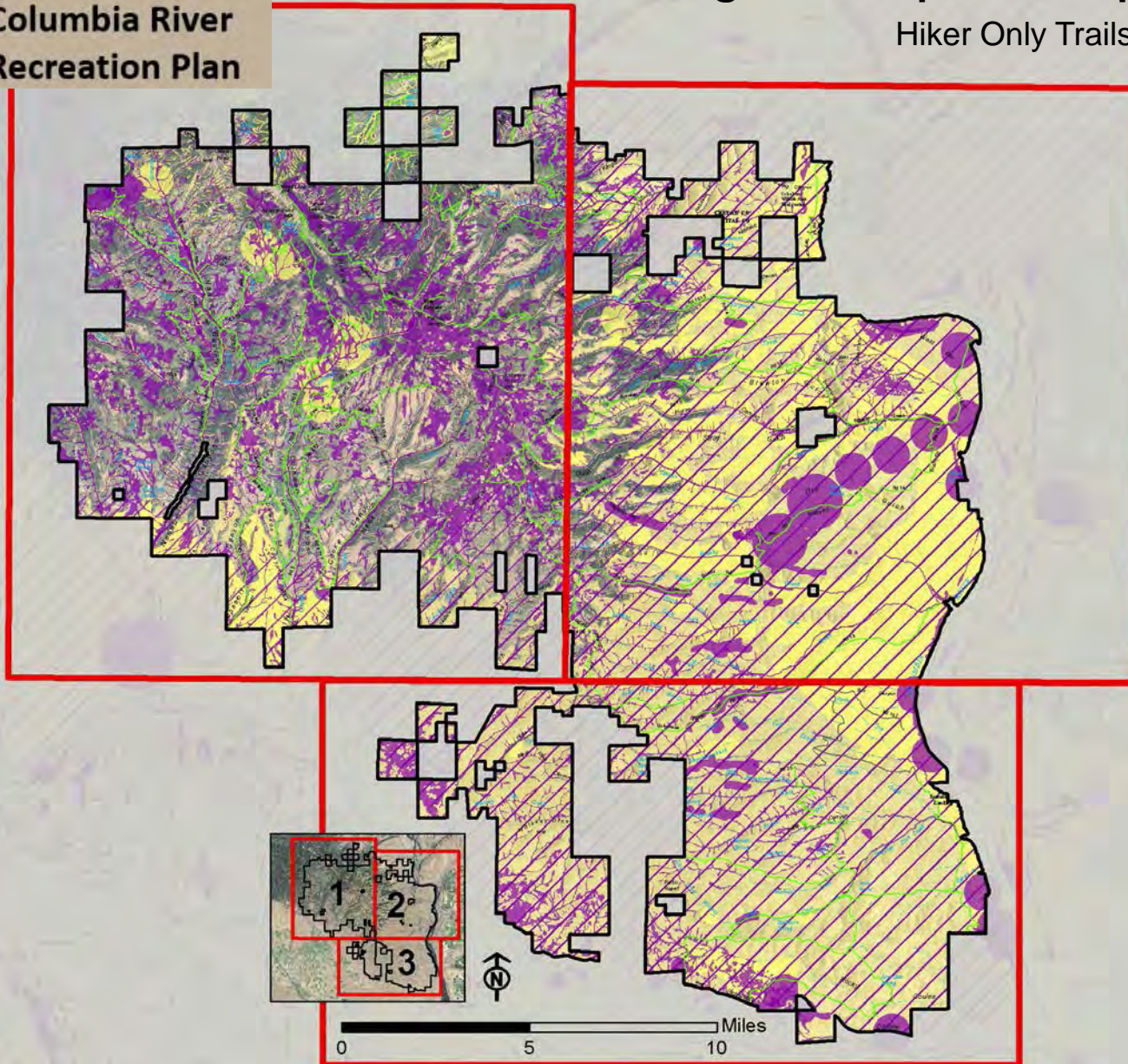
- ▶ Biological Module
- ▶ Geologic/Soils Module
- ▶ Management Module



**Naneum Ridge to
Columbia River
Recreation Plan**

Biological Composite Map

Hiker Only Trails



User Survey

14. If you stay overnight, where do most often stay? (Please choose only one)

Camp in the area

Off-site camping

Off-site lodging

Other (please specify)

15. If camping, what equipment do you use most often? (Please choose only one)

Tent (car camping)

Fifth wheel/Trailer

Truck Camper

Motorhome/RV

5. Who comes with you when you recreate?

16. When you visit the planning area, who do you typically come with? Please specify.

Myself

Family

Friend(s)

Recreation user group/club/organization

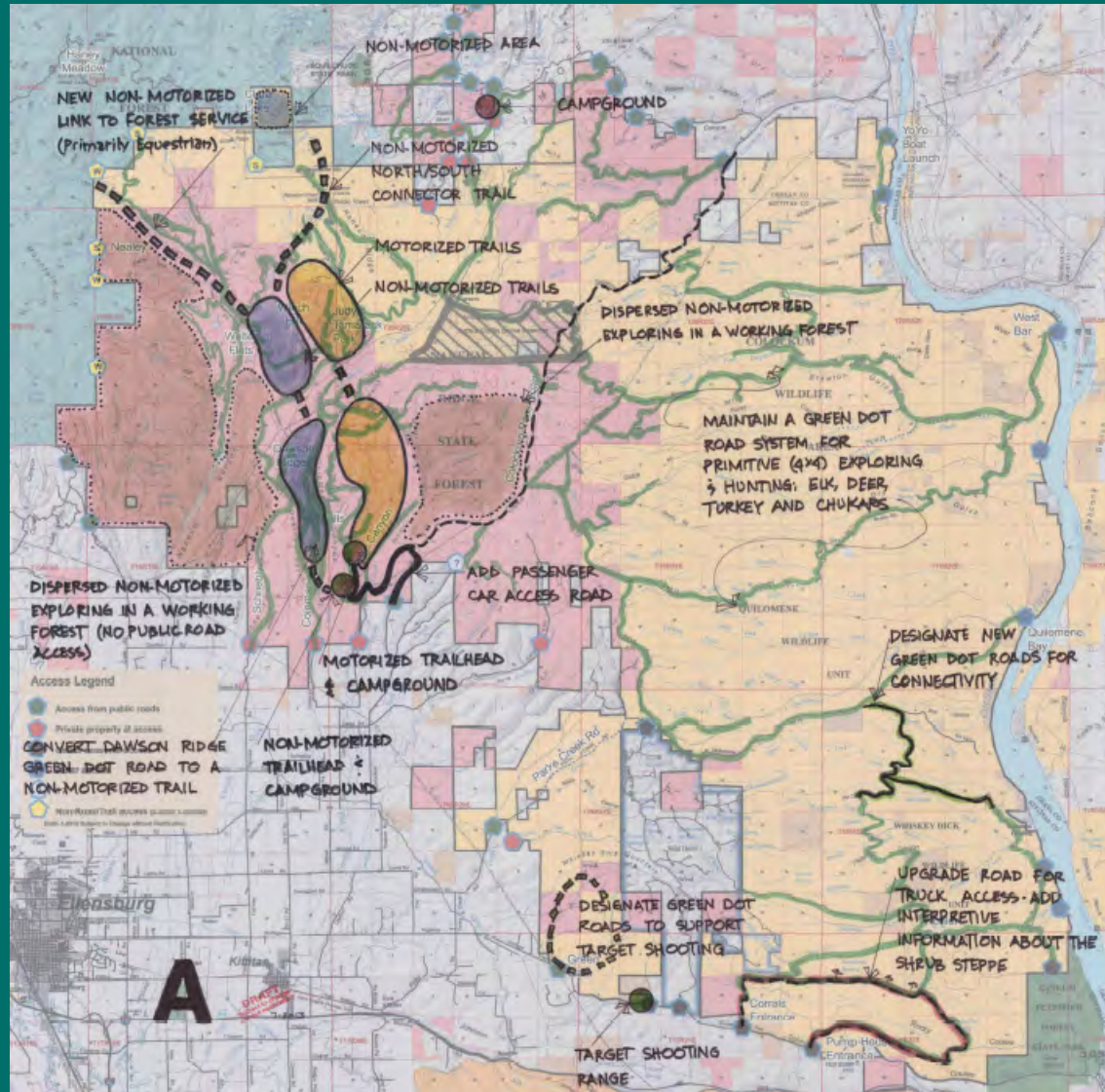


Public Comments

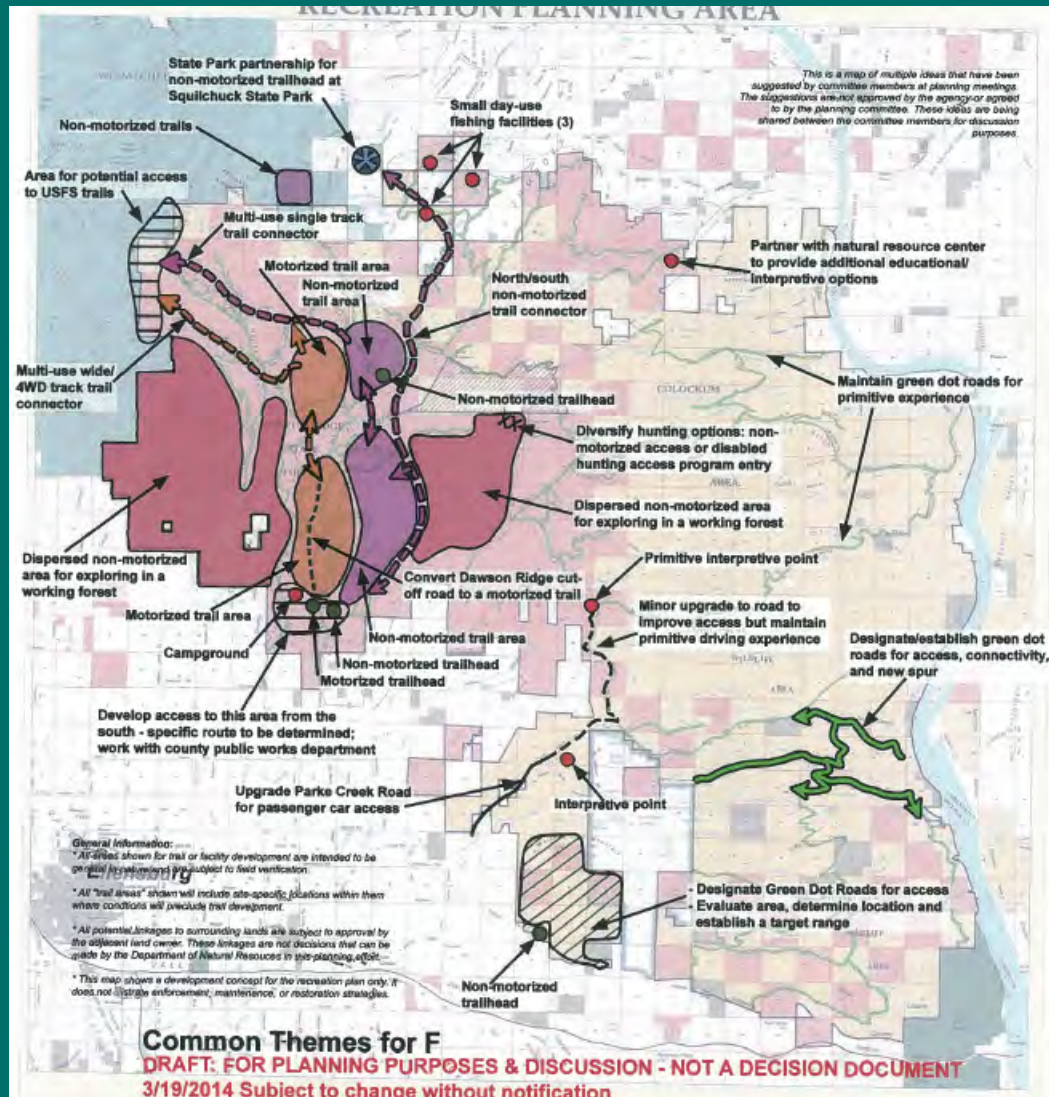
- ▶ Hunting
- ▶ Road Access
- ▶ Developed Recreation
- ▶ Conservation Concerns



Concept Development



Preferred Alternative



Objectives & Strategies

Objective J: Improve Parke Creek Road for public access to interpretive points as shown on the Concept Map.

Strategies

1. Upgrade Parke Creek Road to the lower interpretive point to allow passenger vehicles and school buses access for educational programs.
2. Provide for primitive road access between the lower interpretive point on Parke Creek Road and the upper interpretive point on Beacon Hill Road/18 Road.

Western Forest Sub-Area

Objective K: Evaluate and develop public road access to the Naneum Ridge State Forest area from the south.

Strategies

1. Consult with the Kittitas County Public Works staff when evaluating public road access options south of the Naneum Ridge State Forest and/or from Colockum Road.
2. Project proposals will include public road options, cost benefit analysis, and mitigation strategies.

Objective L: Improve public road/trail linkage to adjacent public lands to the west.

Strategies

1. Coordinate with United State Forest Service (USFS) to connect trails onto USFS lands.
2. Evaluate and develop a new green dot road or motorized trail connecting the motorized trail system in the Naneum Ridge State Forest to the motorized trail system on USFS lands in the Dot Creek area.

Green Gate Sub-Area

Objective M: Provide long-term green dot road access in the Green Gate Sub-Area in locations that are more suitable for motorized uses. This area is currently crisscrossed with user-built trails and old tank routes that were used for military training.



Implementation

Table 2. Implementation Priorities and Phases

Project Implementation Priorities and Phasing	
Phase I	Evaluate and plan road access to Naneum Ridge State Forest from the south
	Establish a winter non-motorized trail system
	Locate and develop a target shooting range
	Integrate the disabled hunter road access entry program into the planning area
	Plan for the long term sustainability of the road system and begin implementation of RMAP criteria in the shrub-steppe
	Develop a non-motorized trail system and trailhead in the Naneum Ridge State Forest
	Provide seasonal support facilities at high use dispersed use areas
	Restore areas damaged by recreational use
Phase II	Identify and restore camping-related damage along stream banks
	Create a north/south regional connector trail
	Develop a motorized trailhead and trails in the Naneum Ridge State Forest
	Develop a multi-use (motorized and non-motorized) single-track trail connector to USFS land
	Develop a multi-use (motorized and non-motorized) 4WD trail/road connector to USFS land
	Design and construct small day-use facilities at three lakes in the Stemilt Sub-Area
	Locate, design, and construct a campground in the Naneum Ridge State Forest
	Convert Dawson Ridge Road to a motorized trail; convert Pettit Road, south of the Arthur Coffin Game Reserve, to non-motorized public access only

<http://www.dnr.wa.gov/programs-and-services/recreation/recreation-planning>





WASHINGTON STATE DEPARTMENT OF
Natural Resources

www.dnr.wa.gov