



WASHINGTON STATE DEPARTMENT OF
Natural Resources

Peter Goldmark - Commissioner of Public Lands

Baker to Bellingham Recreation Plan

For
State Trust Lands



Managed by the Washington State Department of Natural Resources

March 2016

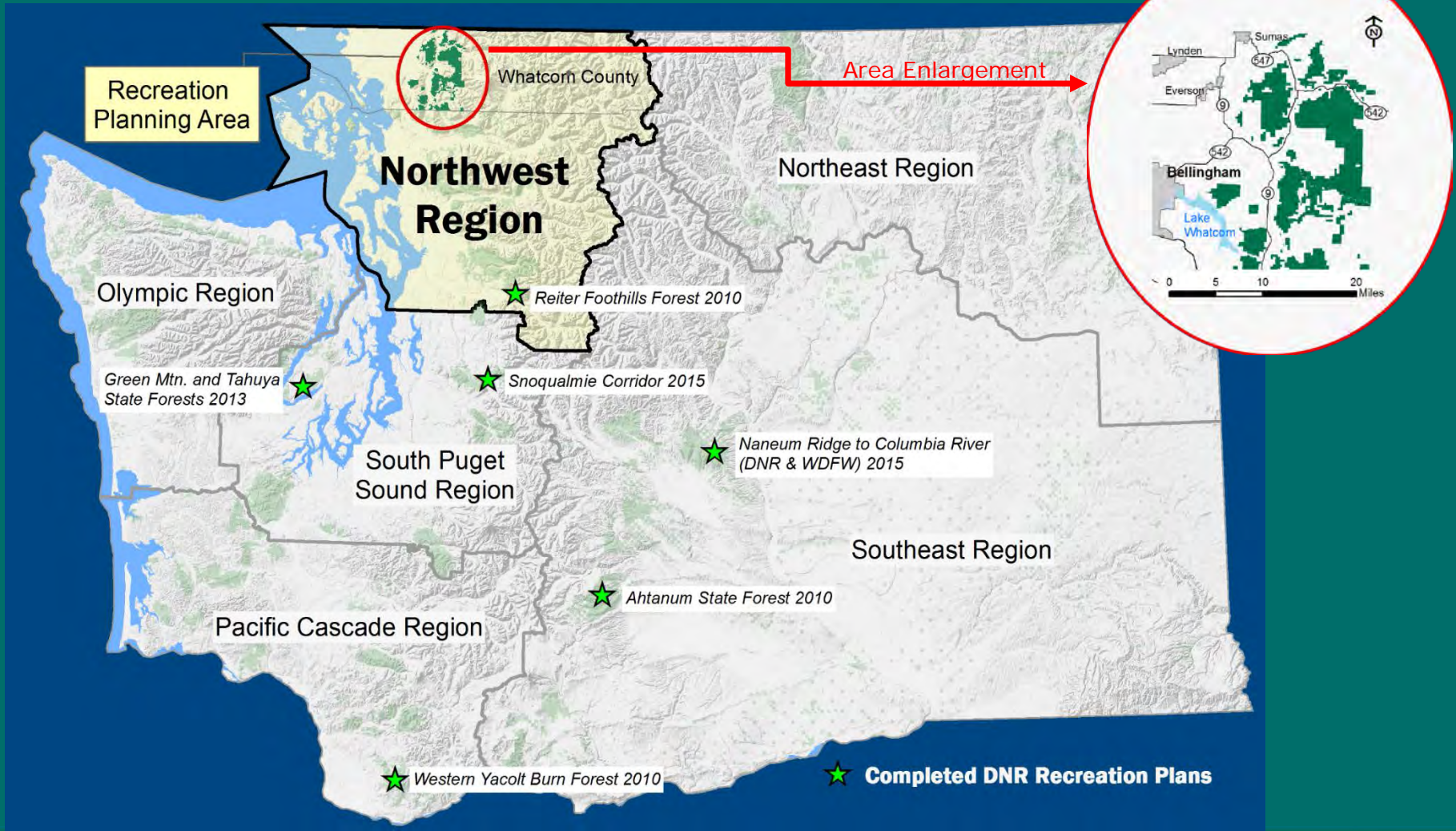


WASHINGTON STATE DEPARTMENT OF
Natural Resources
www.dnr.wa.gov

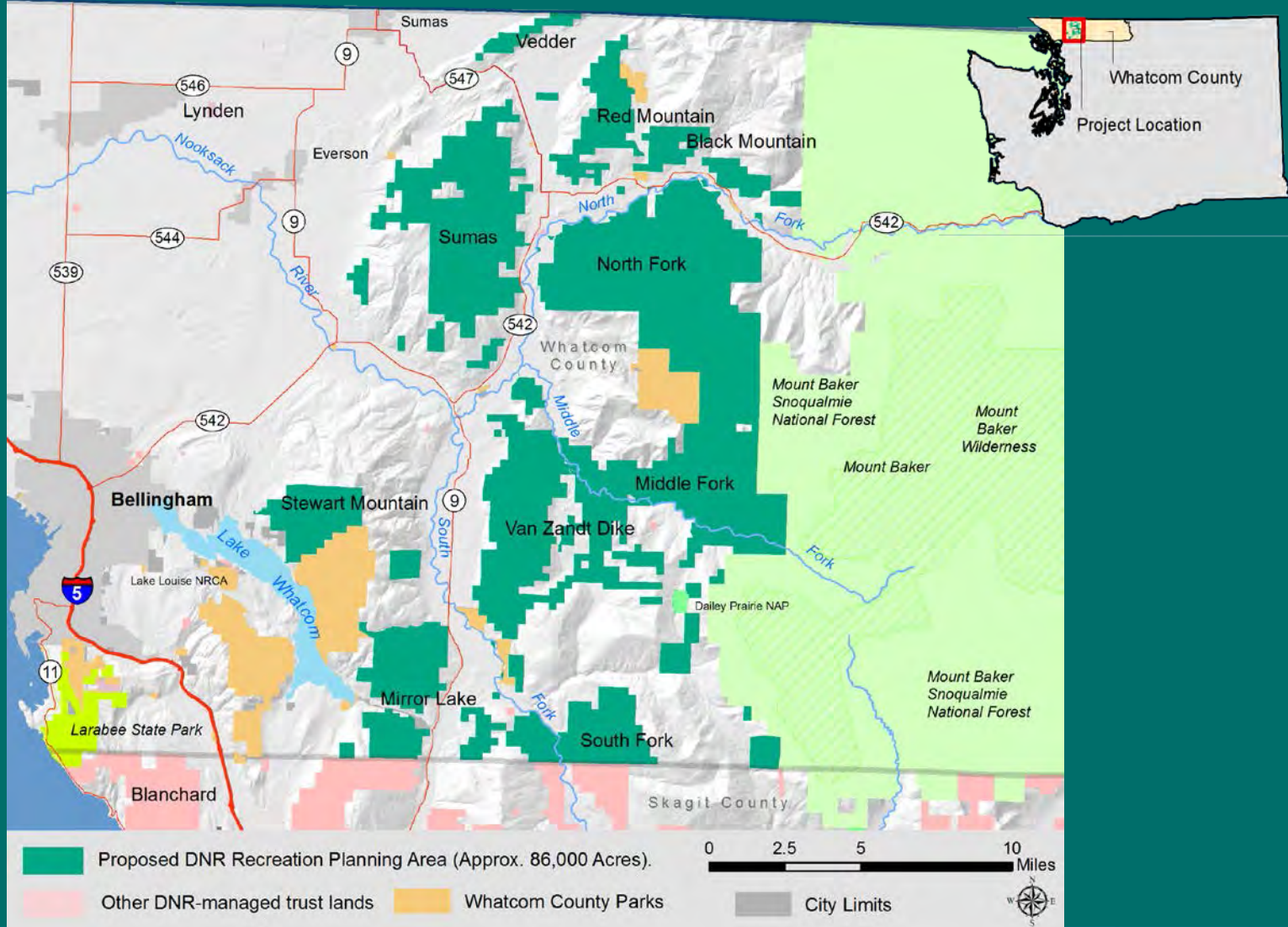
Context of the Baker to Bellingham Recreation Planning Area



Department of Natural Resources Northwest Region



Planning Area Map



Overview of the Recreation Planning Process for DNR State Forests



Planning Purposes

- ▶ Determine types of recreation to be provided in the forests, and where
- ▶ Develop objectives for managing recreation over 10-15 years
- ▶ Identify partnerships and volunteer opportunities
- ▶ Establish priorities for implementation



Planning Process

- Seven Phases
- Planning Committee
- Land Suitability
- Typical process = ~ 24 months

Phase 1	PRE-PLANNING Determine the need and scope, project team, stakeholder involvement plan, and data collection needs
Phase 2	INVENTORY/ LAND SUITABILITY Determine the land suitability and planning context for the project
Phase 3	RECREATION INVENTORY/ PUBLIC INVOLVEMENT Determine public issues and concerns, hold public meetings, collect recreation field data, user surveys
Phase 4	ASSESSMENT Determine the 'BIG IDEA', or management concept for the planning area (what are we going to do where?)
Phase 5	ALTERNATIVE(S) Determine and describe the preferred alternative for the project (how and to what degree we provide recreation?)
Phase 6	SEPA & COMMUNICATIONS SEPA is conducted, plan is edited and formatted for publication
Phase 7	ADOPTION Plan is adopted by the agency



Planning Goals

- ▶ Safety
- ▶ Compatible with trust management obligations
- ▶ Resource protection
- ▶ Quality experience for recreation visitor



Typical Planning Process

Recreation Planning Process		Year 1 Months 1-6	Year 1 Months 7-12	Year 2 Months 13-18	Year 2 Months 19-24
Phase 1	PRE-PLANNING Determine the need and scope, project team, stakeholder involvement plan, establish project website and determine data collection needs	[Yellow bar]			
Phase 2	LAND SUITABILITY ANALYSIS Determine the land suitability and planning context for the project: Biological, Soils/Geology, Management Modules	[Light Green bar]			
Phase 3	PUBLIC INVOLVEMENT/ INVENTORY Determine public issues and concerns, hold public meetings, collect recreation field data, user surveys, recreation planning committee (rpc), rpc field visits	[Purple bar]			
Phase 4	ASSESSMENT & CONCEPTS Synthesize issues and land suitability data. Determine preliminary management concepts for recreation	[Light Blue bar]			
Phase 5	CONCEPT & PLAN WRITING Finalize and describe a recommended recreation management concept, develop strategies and objectives, prioritize implementation and phasing of projects	[Light Orange bar]			
Phase 6	SEPA & COMMUNICATIONS Non-Project SEPA is conducted, plan is edited and formatted for publication	[Light Green bar]			
Phase 7	ADOPTION Plan is adopted by the agency	[Light Grey bar]			

Activity	Start	End
RECREATION PLAN FORMULATION	Year 1, Month 7	Year 2, Month 18
SEPA DOCUMENT FORMULATION	Year 1, Month 7	Year 2, Month 24



Recreation Planning Committee

Data Gathering

Biological Data
Soils/ Geology Data
Management Data

Field Visits
Field Inventory of
Current Use

Public Input
Recreation Trends
User Survey
Adjacent Land Uses

Assessment

Land Suitability
Analysis

Field Visits

Issue Sorting
from:

Survey Results
Public Meeting
Committee Input
On-Going Public Input

Evaluate Costs of Capital
Development & Maintenance

Recommendations

Committee Brainstorming

Preliminary Recommendations

Develop/Review Draft
Recreation Concept Plans

Prioritize Implementation Timeline

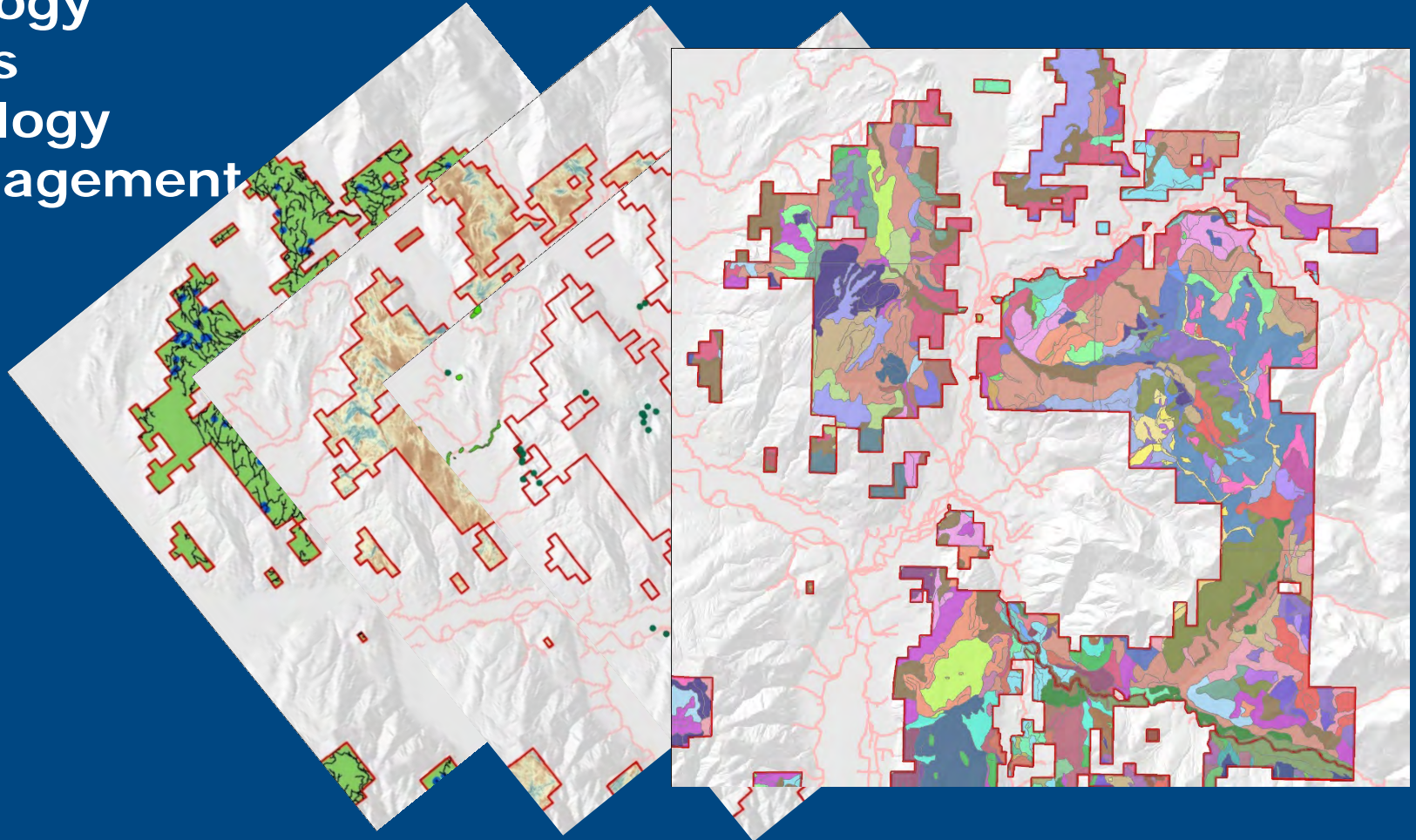
Final Concept Plan
Committee Recommendation



Recreation Land Suitability

Maps guide recreation planning efforts

Biology
Soils
Geology
Management





WASHINGTON STATE DEPARTMENT OF
Natural Resources

Peter Goldmark - Commissioner of Public Lands