



Draft 6/14/16 - subject to change without notification

A Brief Geologic Summary of Whatcom County



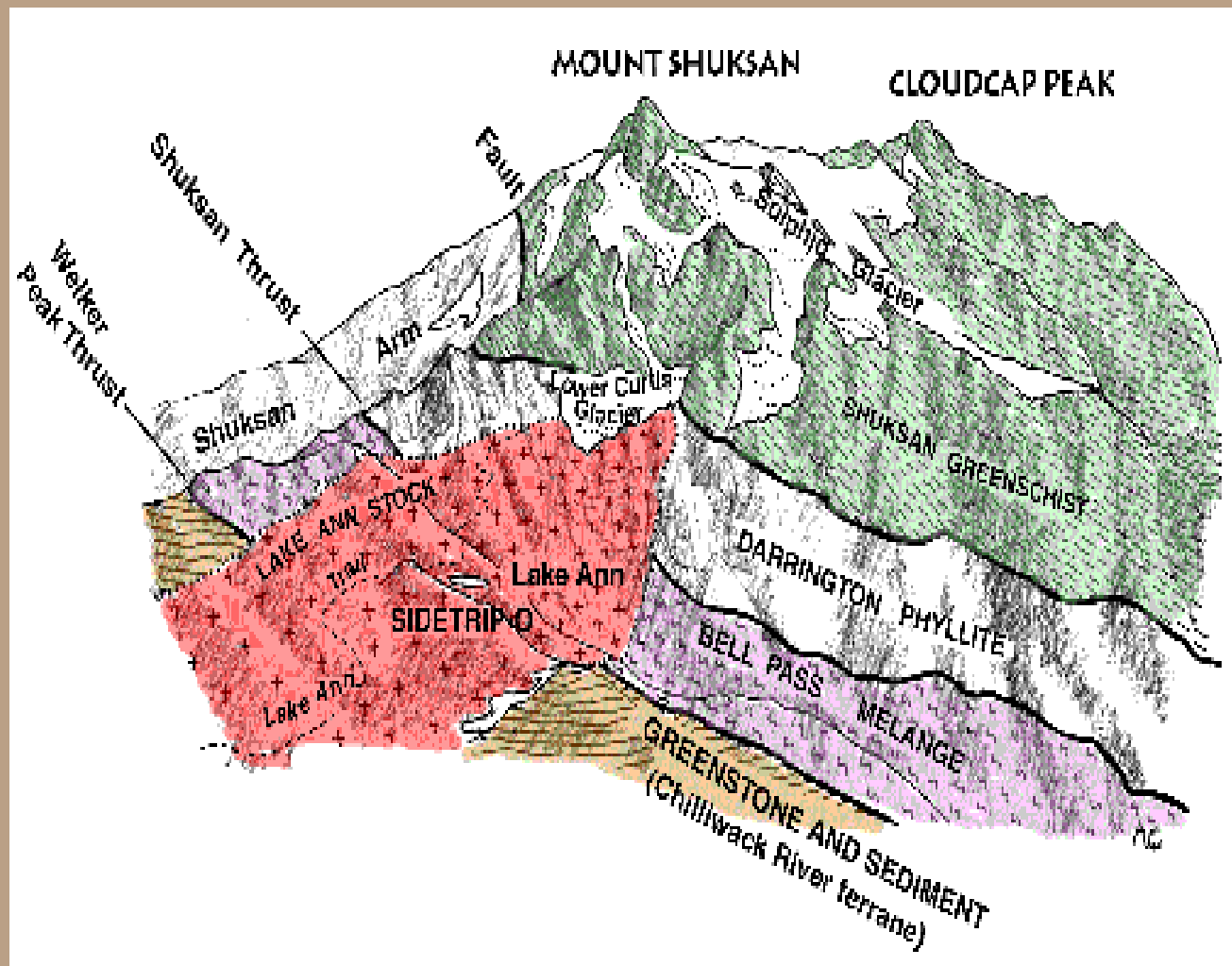
“The Present is the Key to the Past”

Darrington Phyllite



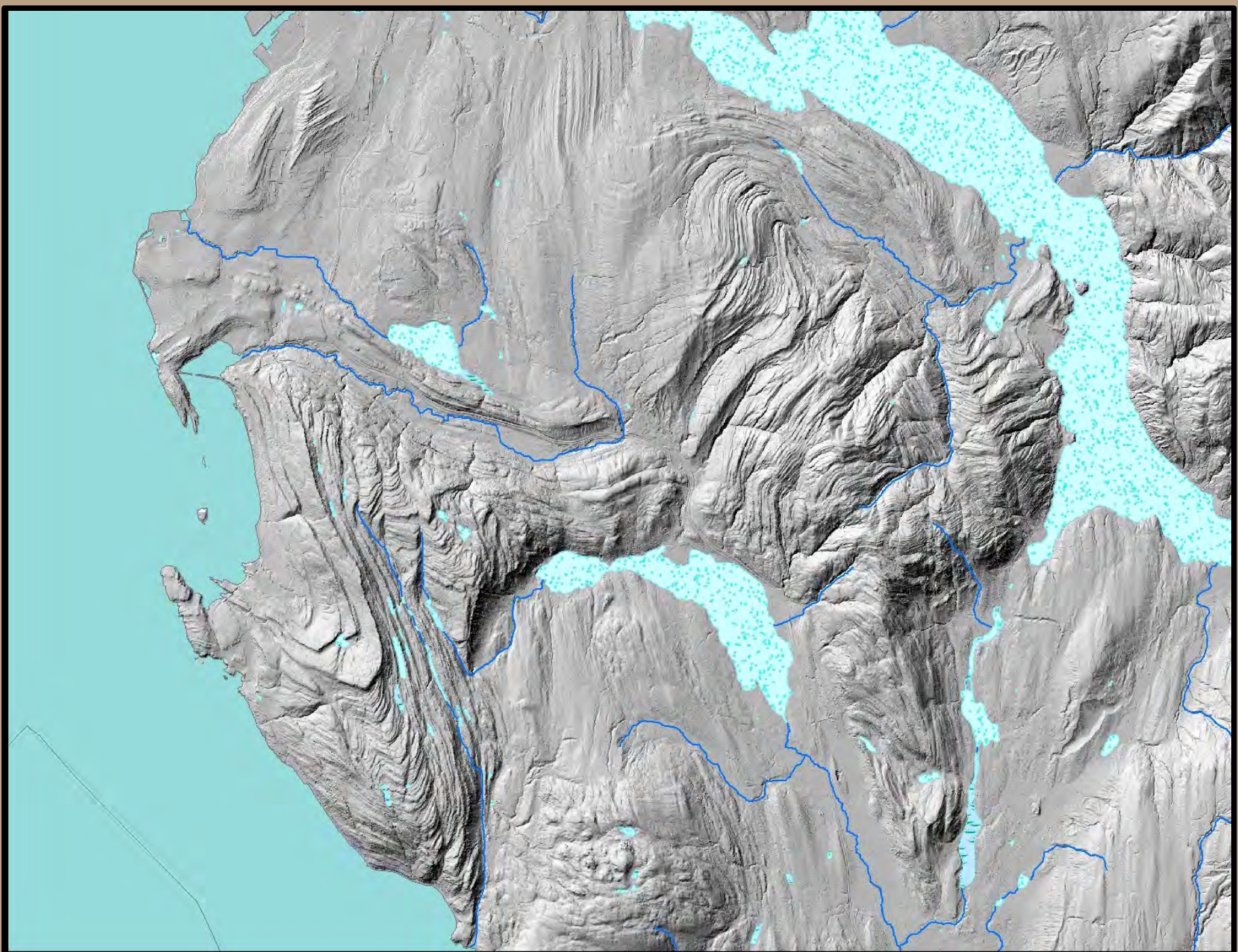
Draft 6/14/16 - subject to change without notification





Chuckanut Sandstone





Glacial History



The Puget Lobe



Glacial Outwash

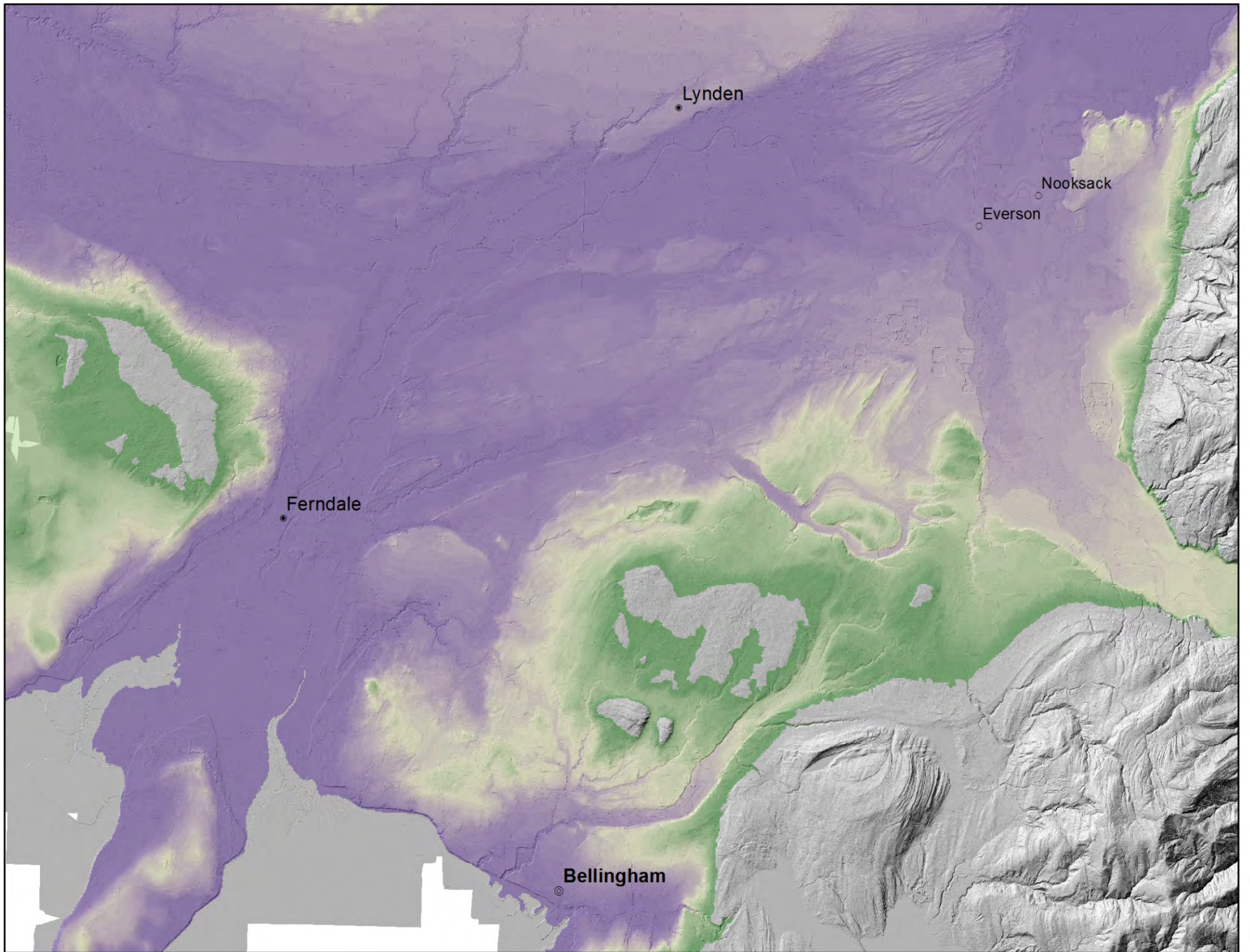


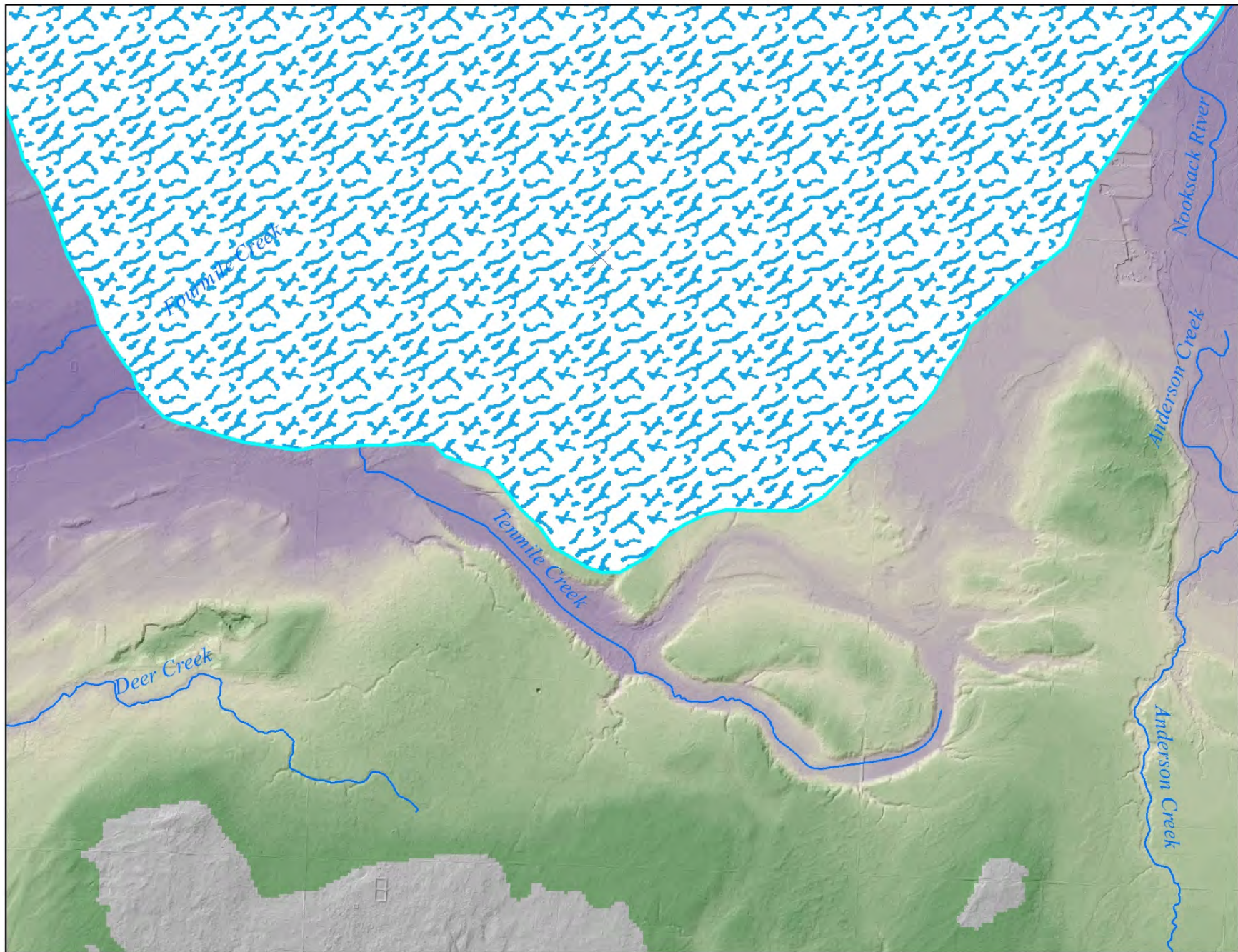
Glacial Drift



Glacial Erratics







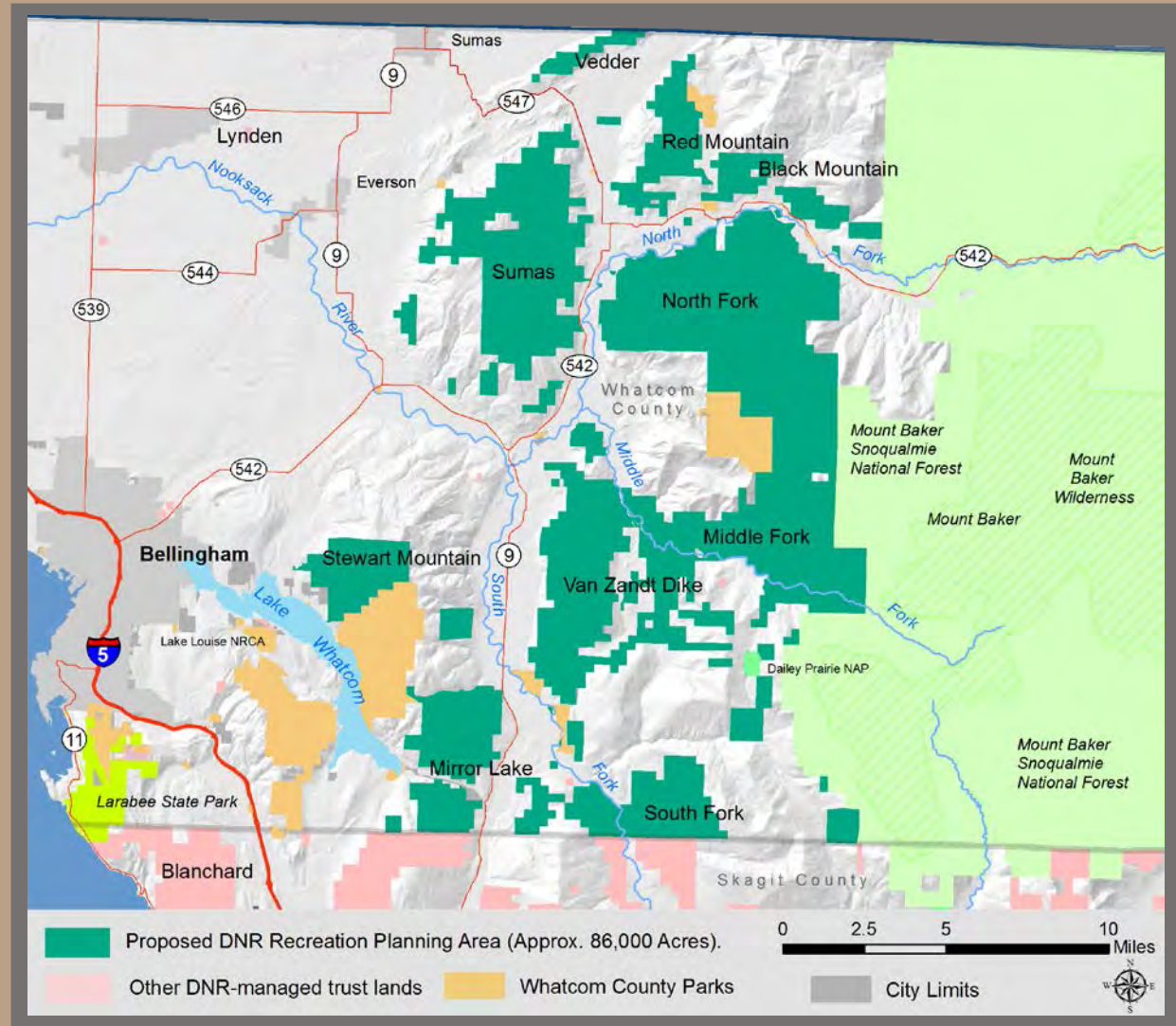
BAKER TO BELLINGHAM RECREATION PLAN

RECREATION LAND SUITABILITY



BAKER TO BELLINGHAM RECREATION PLAN

Planning Area Map



Draft 6/14/16 - subject to change without notification



Recreation Land Suitability

Identify and map areas with long- term limiting factors that affect recreation planning

Geologic & Soils Criteria

Management Criteria

Biological Criteria



BAKER TO BELLINGHAM RECREATION PLAN

Overview

- 1) Review geologic & soils criteria individually
- 2) Suitability matrix
- 3) Composites of information by type



BAKER TO BELLINGHAM RECREATION PLAN

Terms for Geologic & Soil Suitability

Low Suitability= Areas with long-term limiting factors. These primarily include areas with potential for landslides, erosion and slope instability

Moderate Suitability= Areas where less mitigation and potential for impact exists compared to low suitability



BAKER TO BELLINGHAM RECREATION PLAN

Geologic & Soil Criteria*

Soil Risks for Recreation

Poorly Drained Soils

Slope Percentage

100-Year Flood Plains

Alluvial Fans

Areas That Have Moved in Previous Landslides

Areas With High Potential for Landslides

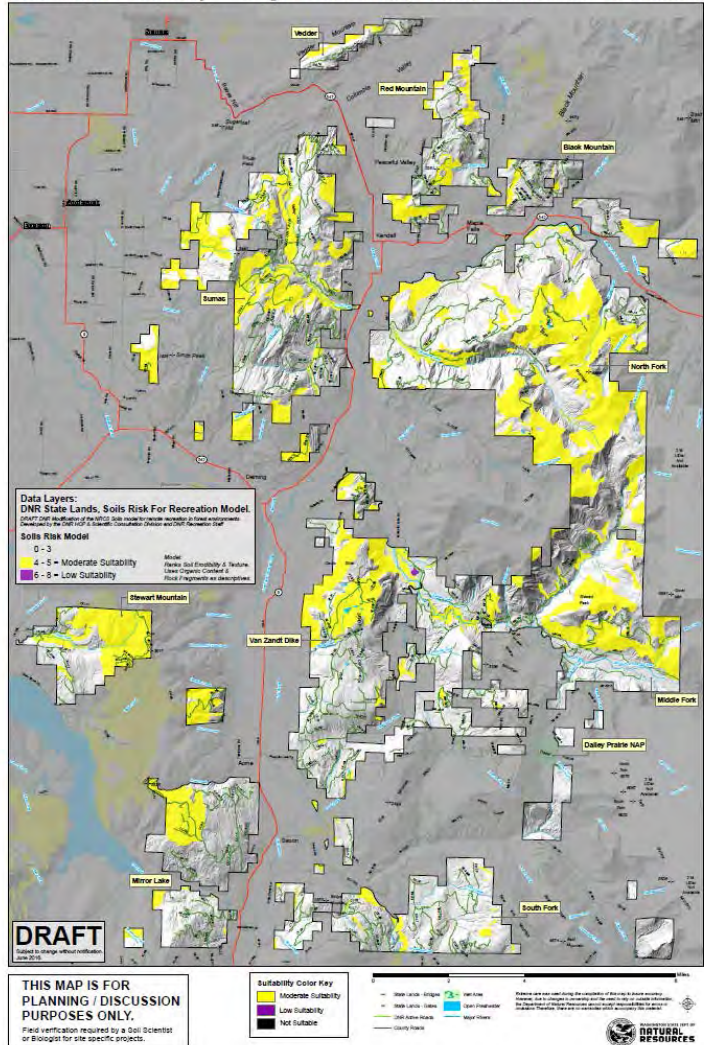
**These project-scale considerations are not intended to replace site specific project analysis. This list is based on information available to date.*



BAKER TO BELLINGHAM RECREATION PLAN

Soil Risks for Recreation:
Single Track & Double Track Trails, Facilities

Geology & Soils: Soils Risk for Recreation
Recreation Suitability - Single Track Trails, Double Track Trails & Facilities



Notes

Draft 6/14/16 - subject to change without notification

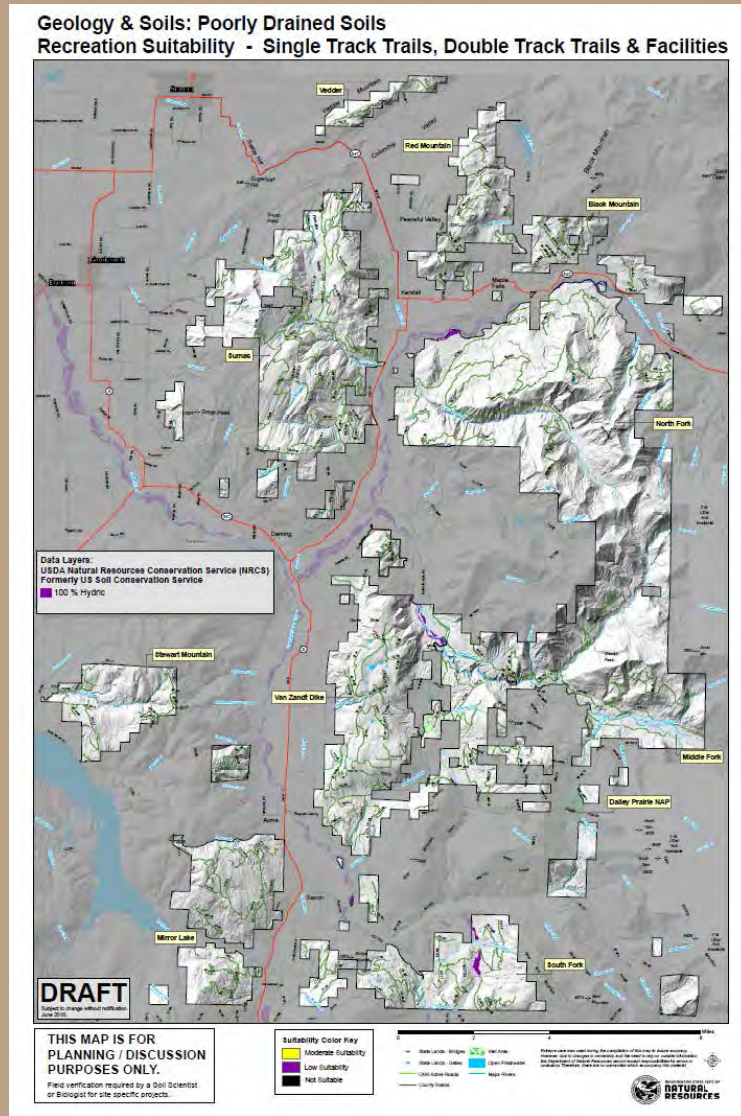


WASHINGTON STATE DEPARTMENT OF
NATURAL RESOURCES

dnr.wa.gov

BAKER TO BELLINGHAM RECREATION PLAN

Poorly
Drained Soils:
Single Track &
Double Track
Trails,
Facilities



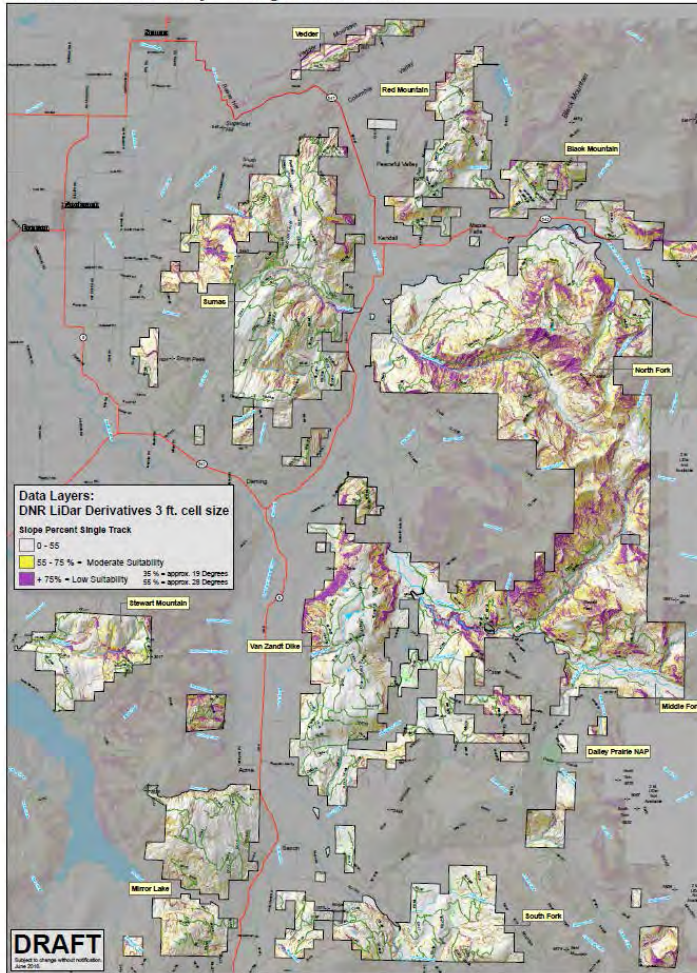
Notes



BAKER TO BELLINGHAM RECREATION PLAN

Steep Slopes:
Single Track
Trails

Geology & Soils: Slope Percentage
Recreation Suitability - Single Track Trails



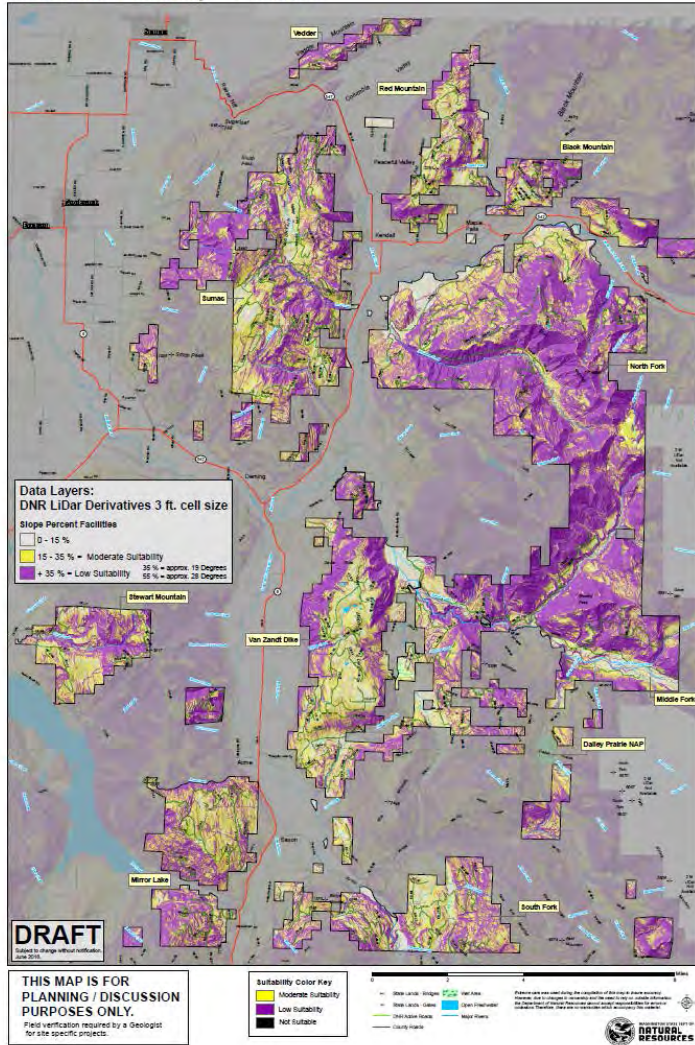
Notes



BAKER TO BELLINGHAM RECREATION PLAN

Steep Slopes:
Facilities

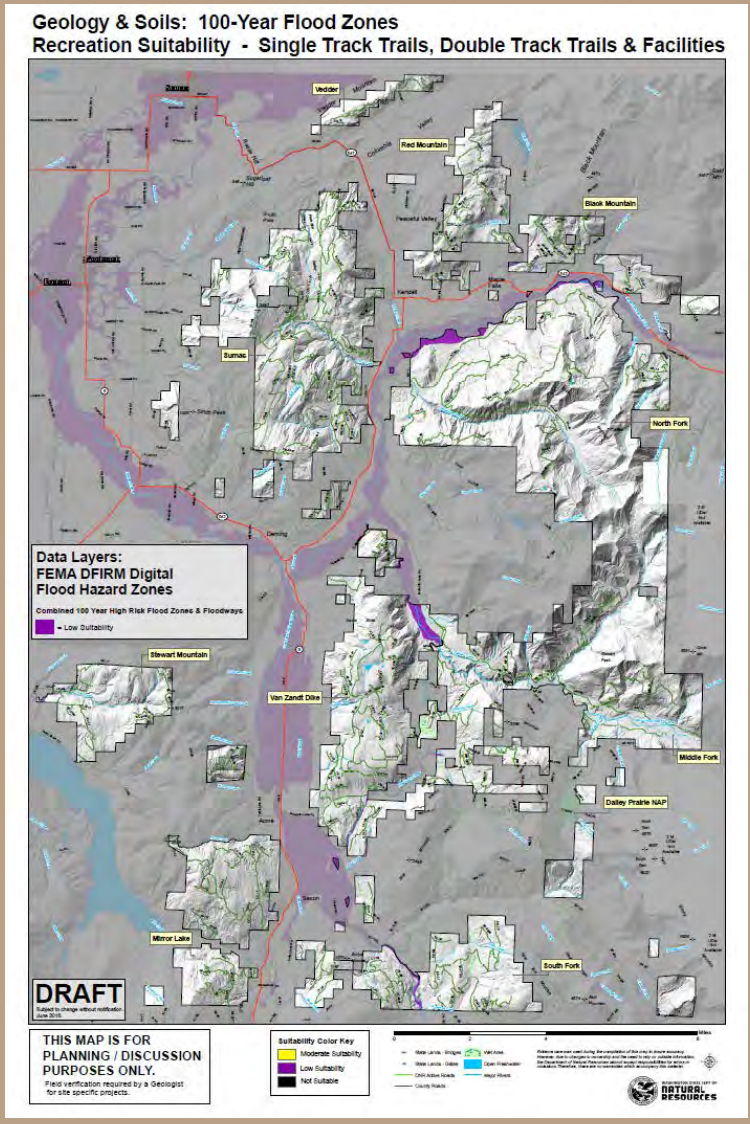
Geology & Soils: Slope Percentage
Recreation Suitability - Facilities



Notes

BAKER TO BELLINGHAM RECREATION PLAN

100-Year
Flood Plains:
Single Track &
Double Track
Trails,
Facilities

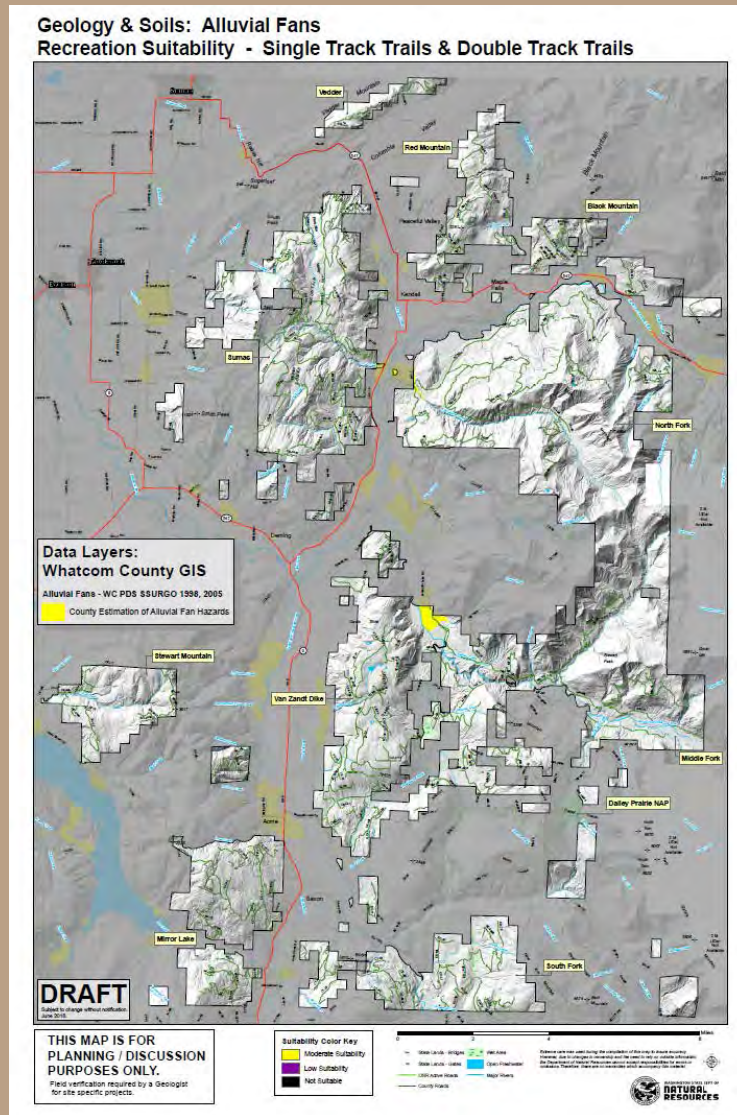


Notes



BAKER TO BELLINGHAM RECREATION PLAN

Alluvial Fans:
Single Track &
Double Track
Trails



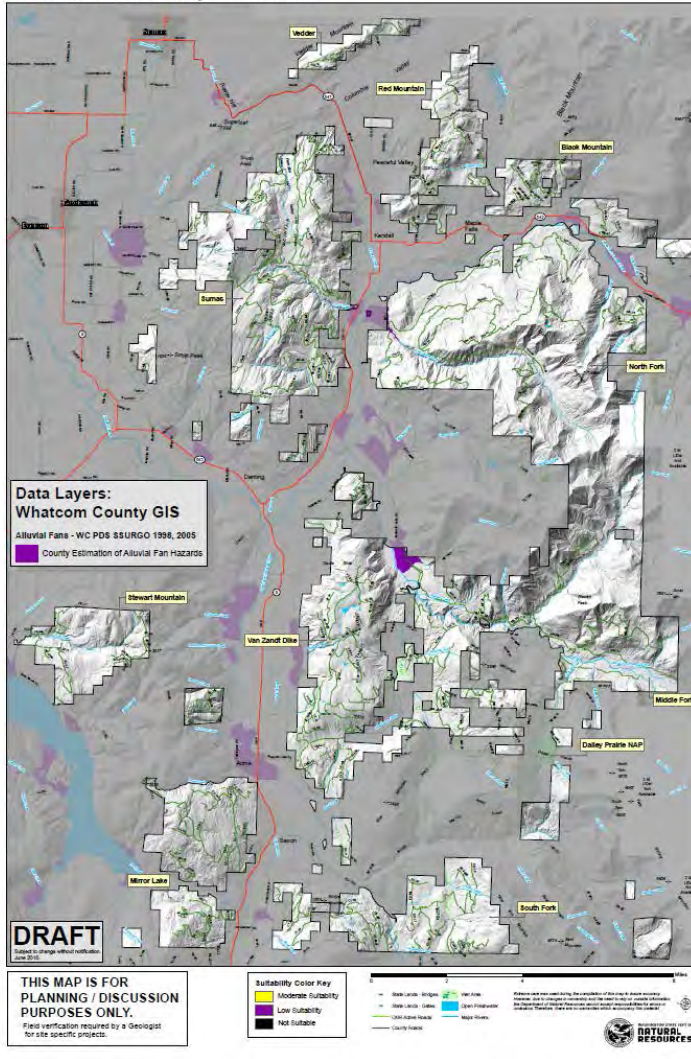
Notes



BAKER TO BELLINGHAM RECREATION PLAN

Alluvial Fans: Facilities

Geology & Soils: Alluvial Fans Recreation Suitability - Facilities



Notes

Draft 6/14/16 - subject to change without notification



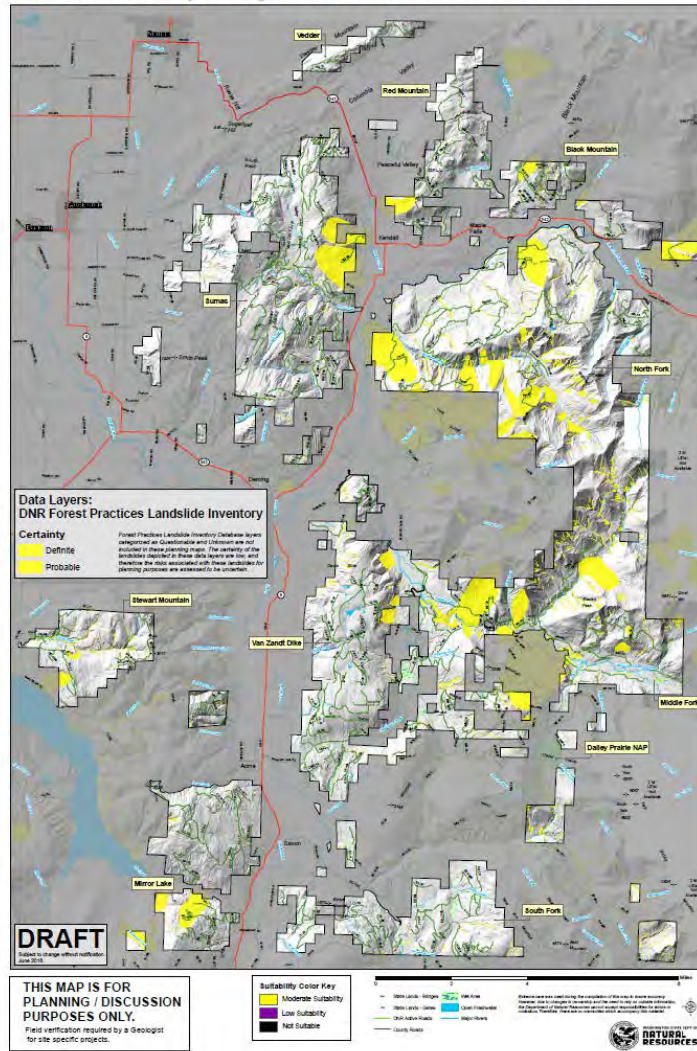
WASHINGTON STATE DEPARTMENT OF
NATURAL RESOURCES

dnr.wa.gov

BAKER TO BELLINGHAM RECREATION PLAN

Areas That Have Moved in Previous Landslides: Single Track & Double Track Trails

Geology & Soils: Areas That Have Moved in Previous Landslides
Recreation Suitability - Single Track Trails & Double Track Trails



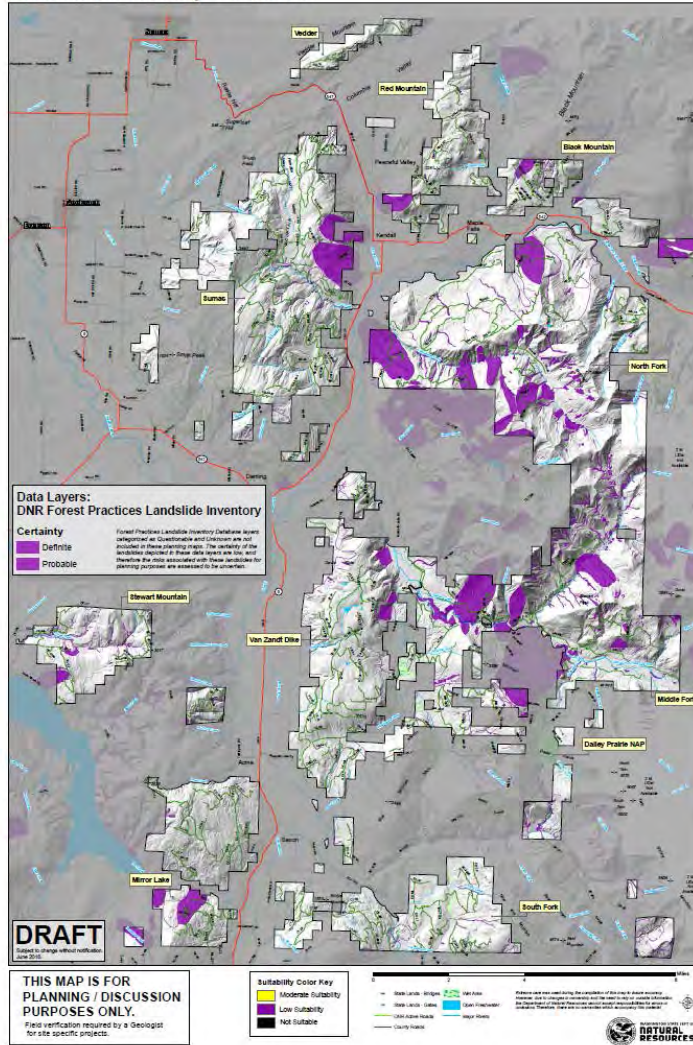
Notes



BAKER TO BELLINGHAM RECREATION PLAN

Areas That Have Moved in Previous Landslides: Facilities

Geology & Soils: Areas That Have Moved in Previous Landslides
Recreation Suitability - Facilities



Notes

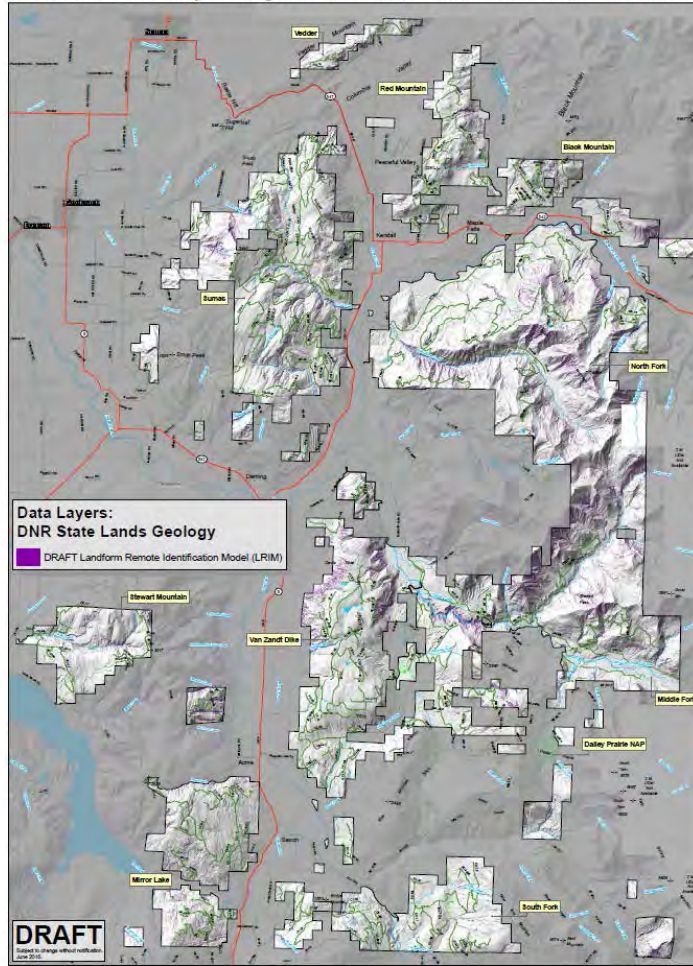
Draft 6/14/16 - subject to change without notification



BAKER TO BELLINGHAM RECREATION PLAN

Areas With High Potential for Landslides: Single Track & Double Track Trails, Facilities

Geology & Soils: Areas With High Potential for Landslides
Recreation Suitability - Single Track Trails, Double Track Trails & Facilities



DRAFT
Subject to change without notification
Date: 06/14/16

Suitability Color Key
Moderate Suitability
Low Suitability
Not Suitable

State Lands (Orange) State Parks (Green)
State Parks (Green) State Parks (Green)
State Parks (Green) State Parks (Green)
State Parks (Green) State Parks (Green)

Recreation Suitability Legend:
Single Track Trails (Blue)
Double Track Trails (Green)
Facilities (Red)
County Roads (Black)
DNR Admin Roads (Red)
Major Roads (Blue)
County Roads (Black)

Notes



BAKER TO BELLINGHAM RECREATION PLAN

Suitability Matrix

GEOLOGIC/SOILS CRITERIA	Recreation Trails: Single Track	Recreation Trails: Double Track	Recreation Facilities
Soil Risks for Recreation	Moderate Suitability	Moderate Suitability	Moderate Suitability
Poorly Drained Soils	Low Suitability	Low Suitability	Low Suitability
Slope Percentage	Low Suitability in areas >75% Moderate Suitability in areas 55 – 75%	Low Suitability in areas >55% Moderate Suitability in areas 35 – 55%	Low Suitability in areas >30% Moderate Suitability in areas 15 – 30%
100-Year Flood Plains	Low Suitability	Low Suitability	Low Suitability
Alluvial Fans	Moderate Suitability	Moderate Suitability	Low Suitability
Areas that have Moved in Previous Landslides	Moderate Suitability	Moderate Suitability	Low Suitability
Areas with High Potential for Landslides	Low Suitability	Low Suitability	Low Suitability

Draft 6/14/16 - subject to change without notification



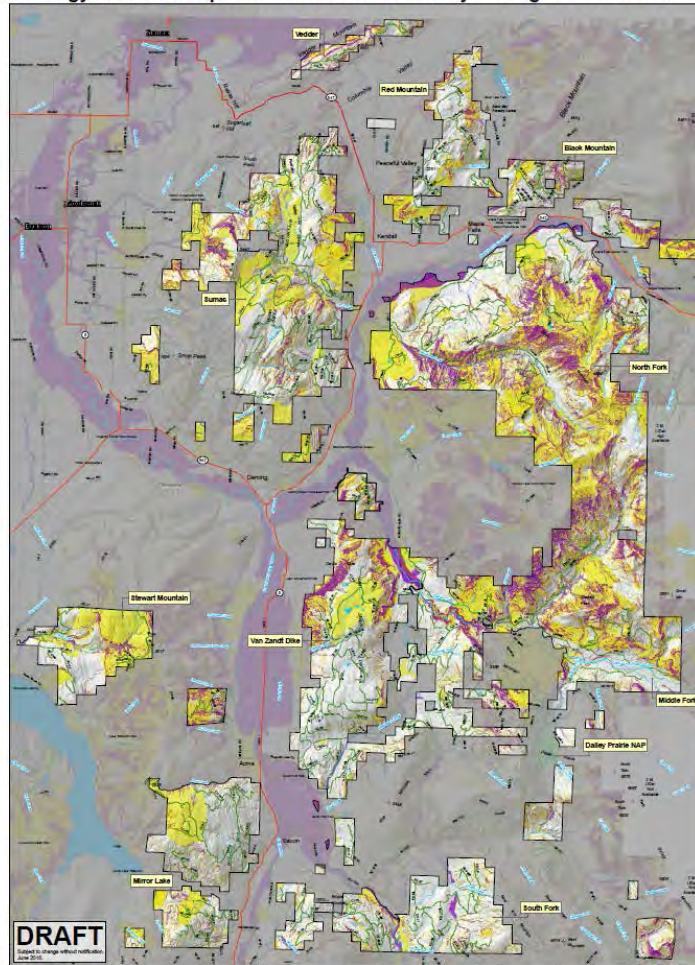
Questions



BAKER TO BELLINGHAM RECREATION PLAN

Geology/Soils Composite: Recreation Land Suitability – Recreation Trails Single Track

BAKER TO BELLINGHAM RECREATION PLAN
Geology & Soils Composite: Recreation Suitability - Single Track Trails



DRAFT
Subject to change without notification

Suitability Color Key
Moderate Suitability
Low Suitability
Not Suitable

State Lands - Designated
State Lands - Other
County Lands
County Roads
State Lands - Designated
State Lands - Other
County Lands
County Roads
State Lands - Designated
State Lands - Other
County Lands
County Roads



Every effort has been made to ensure the accuracy of this map. However, due to changes in ownership and the need to rely on data from outside the agency, the Department of Natural Resources cannot accept responsibility for errors or omissions. Therefore, no warranties accompany this material.

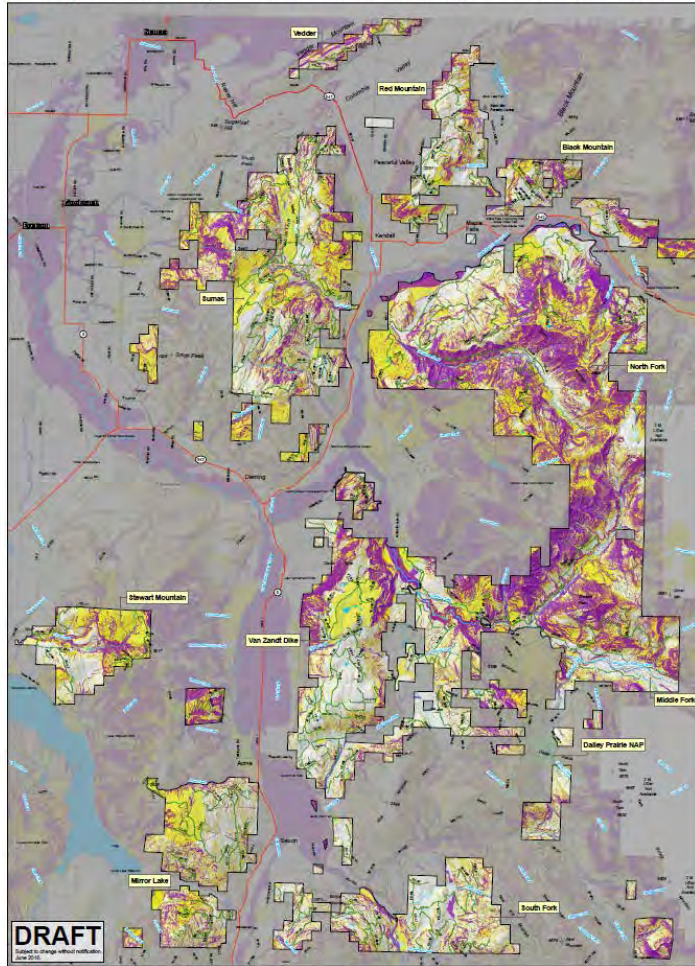
Notes



BAKER TO BELLINGHAM RECREATION PLAN

Geology/Soils Composite: Recreation Land Suitability – Recreation Trails Double-Track

BAKER TO BELLINGHAM RECREATION PLAN
Geology & Soils Composite: Recreation Suitability - Double Track Trails



DRAFT
Subject to change without notification.
Final verification required for site specific projects.

Suitability Color Key
 Moderate Suitability (Yellow)
 Low Suitability (Orange)
 Not Suitable (Purple)

State Lands - Bridge
 State Lands - Other
 State Lands - Road
 County Road
 State Lands - County Parks
 National County Parks
 State Lands - Other
 State Lands - County Center
 National County Parks
 State Lands - Other
 State Lands - County Center



Notes

Every effort has been made to ensure the accuracy of this map. However, due to changes in ownership and the need to rely on data from outside the agency, the Department of Natural Resources cannot accept responsibility for errors or omissions. Therefore, no warranties accompany this material.

Draft 6/14/16 - subject to change without notification



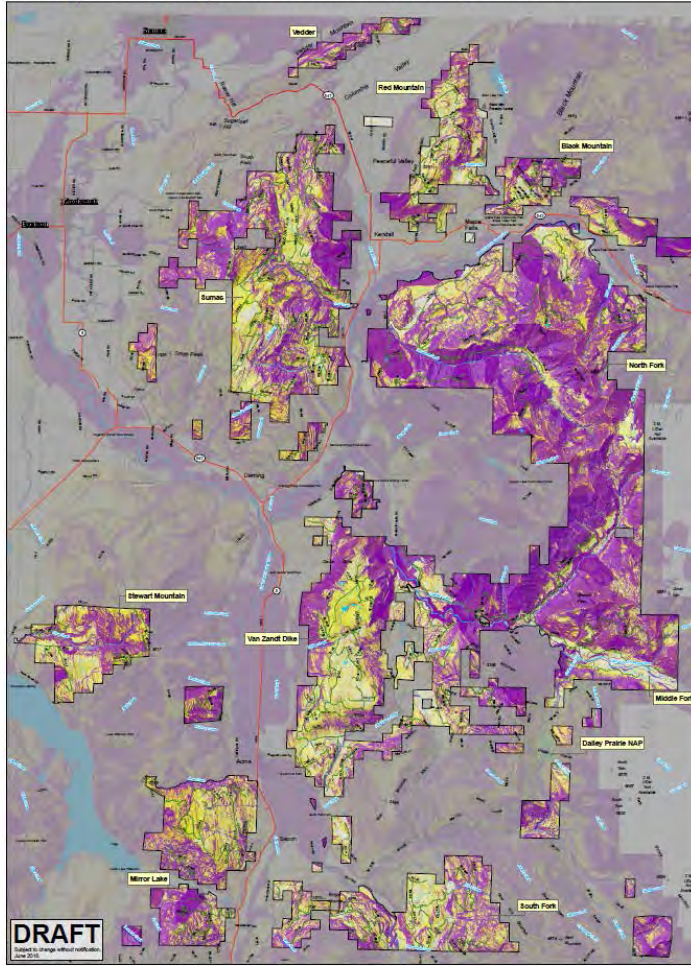
WASHINGTON STATE DEPARTMENT OF
NATURAL RESOURCES

dnr.wa.gov

BAKER TO BELLINGHAM RECREATION PLAN

Geology/Soils Composite: Recreation Land Suitability – Recreation Facilities

BAKER TO BELLINGHAM RECREATION PLAN
Geology & Soils Composite: Recreation Suitability - Facilities



THIS MAP IS FOR PLANNING / DISSEMINATION PURPOSES ONLY. Field verification required for final use.

Suitability Color Key

27%

WASHINGTON STATE DEPARTMENT OF NATURAL RESOURCES

Notes

Every effort has been made to ensure the accuracy of this map. However, due to changes in ownership and the need to rely on data from outside the agency, the Department of Natural Resources cannot accept responsibility for errors or omissions. Therefore, no warranties accompany this material.

Draft 6/14/16 - subject to change without notification



Questions





Draft 6/14/16 - subject to change without notification